

7 July 2010

# Sheer Lunacy staring at the Heavens

This material should be regarded as a marketing communication and may have been produced in conjunction with the RBS trading desks that trade as principal in the instruments mentioned herein.

- This paper presents a study of correlations between the moon phases and behaviour of financial markets, and suggests a medium-to-long term trading strategy, which can significantly increase profits. It also takes a quick look at planetary alignments and what could be significant in terms of timing for the coming weeks (really bad for stocks).
- For many years, people have been monitoring relations between natural phenomena and industrial performances or markets behaviour in order to be able to estimate future performance and adapt to changes to either maximise the profits or minimise losses. In many cultures, it is well accepted that moon phases could influence peoples' behaviour, (90 countries in the world today use the Lunar calendar as the basis for time measurement), whereas scientists established its relation to rising and low tides. New moon traditionally symbolise the period of low energy, or energy accumulation period, whereas the time of full moon is the period of high energy or spending period. The question arises of whether this observation could be extended to markets behaviour.
- In this paper, we study the performance of 6 indices FTSE 100, S&P 500, DAX, EUROXX 50, Hang Seng, CAC 40 for a period of several decades.
- The **first observation** is that the **daily change in an index is significantly higher on the new moon days than on average**. Thus, for FTSE 100 the average daily change since 1986 was 0.5522 points, which corresponds to 0.02%, whereas the average change on the new moon day was 6.42 or 0.13%, which is 12 times higher than the average change in absolute values. On the full moon the figure was also high, 5.17 points or 0.11%, meaning 9-times higher than average. However, there was no observation of a particular direction of the markets movement on the new or full moon.
- **A more interesting picture is observed if trading indices on a particular day.** We considered trading twice per month, once on the new moon day, or on the next trading day if new moon falls into a non-trading day, and the other is on the full moon.
- Three scenarios are studied: investing £1000 in an index and holding it for the considered period, and two types of trading strategies, which are described below. The first strategy is buying an index worth of £1000 on the new moon, selling it on the next full moon (usually it is in 14-16 days) and then repeating the process: buying the index worth of the money left after the previous transaction on new moon and selling it gain on the full moon. The second strategy is opposite to the first one, implying buying an index worth of £1000 on the full moon, selling it on the next new moon, and repeating these steps further.

## Tom Pelc

Research

+44 207 085 1420

tom.pelc@rbs.com

## Dmytro Bondar

Research

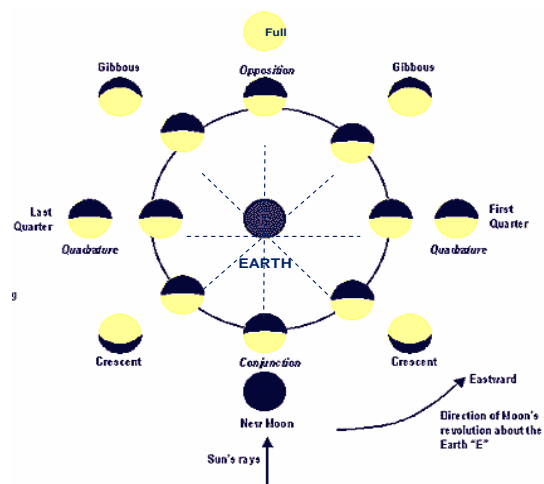
+44 20 3361 4160

dmytro.bondar@rbs.com

[www.rbsm.com/strategy](http://www.rbsm.com/strategy)

- If an investor had invested £1000 in FTSE in 1984, by now he would have approximately £5,130 by holding the index, which represents index performance. Whereas trading FTSE according to moon phases would make a big difference. First, consider buying FTSE on the new moon and selling on the full moon, this would result in £12,116 overall figure for the same period (Figure 1). It means more than double the profits: £11,116 versus £4,130. Contrary, buying on full moon and selling on the new moon would result in only £2,036 overall, as shown in the same Figure. This analysis supports the theory of a correlation between index prices and moon phases.
- The similar behaviour is observed in other markets. Figure 2 presents the study of S&P 500 index versus moon phases for the period since 1928 till 2010. Having invested £1,000 in S&P in 1928, by now would outcome in holding £63,864 worth portfolio, while by implementing the proposed moon trading strategy, the value of portfolio would have been £1,502,689.
- The summary of moon trading of indices for different periods is presented in the table below and in the figures 1-6.
- ***As can be observed from the figures, the outperformance of the moon-investing over the ordinary investing is raised on an increasing rate in rising markets, however, it also falls sharply in falling markets. If the overall performance of the market is positive, the strategy significantly outperforms the index. The question arises how this strategy would behave in pure falling markets?***
- Figures 1a, 2a, 4a, 4b, 5a, 5b show the strategy behaviour in falling markets. As can be seen from the figures, the proposed strategy generally enhances the scale of market moves, as movements on the new/full moon tend to be much higher than on average. The effect of applying the strategy in falling markets is generally similar to holding the index, as observed in Fig. 1a, 4a however, could have some positive (Fig. 2a, 5a) or negative (Fig. 4b, 5b) effect depending on the time period and previous performance.
- Consequently, the proposed strategy allows to significantly outperforming an index in the rising market, while having limited effect in the falling market. The latter observation could be implemented as shorting the index on the new moon and going long on the full moon in order to make profits in the falling markets.
- The proposed trading strategy can be summarised as follows: buy an index on the new moon (if this is a non-trading day, buy on the next trading day), hold till the full moon (usually 14-15 days), sell the index on the full moon (similarly, if non-trading day, sell on the next trading day), repeat the investment of the overall amount on the next moon cycle (usually in 14-16 days), enjoy your profits!

The Lunar Cycle – The Moon’s phases. Phases seen from Earth (E)



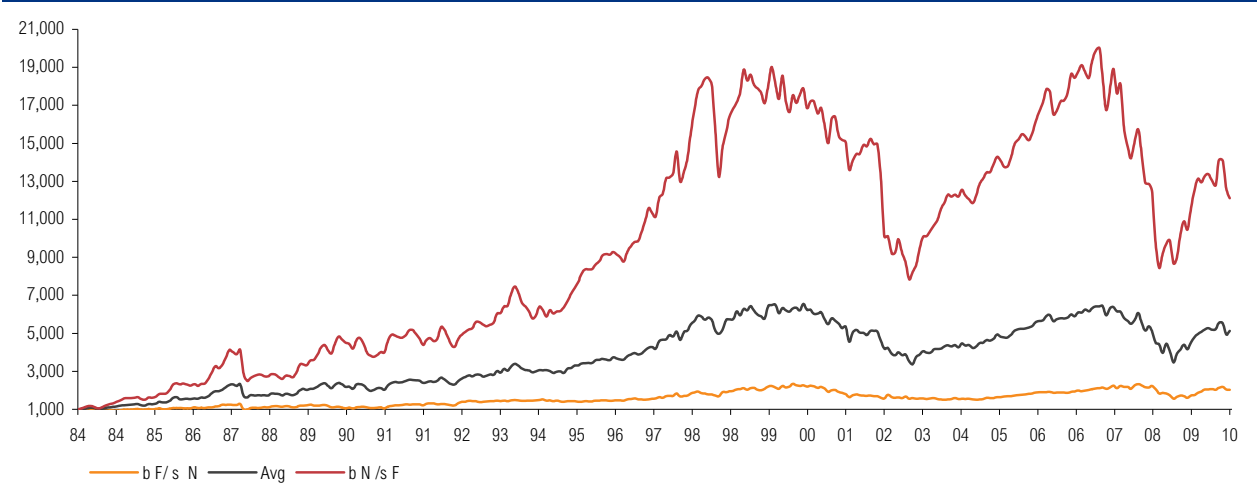
Source: Encyclopedia Americana International

Relative performance of the various stock indices and using moon trading dates

	Period	Amount invested	Index Performance	Moon trading (buy new/sell full)	Compare with index %	Moon trading (buy full/sell new)	Compare with index %
FTSE 100	1984 - 2010	£1,000	£5,130	£12,116	269	£2,036	25
S&P 500	1928 - 2010	£1,000	£63,894	£1,502,689	2388	£2,571	2
DAX	1959 - 2010	£1,000	£17,361	£75,689	457	£3,971	18
EUROXX 50	1986 - 2010	£1,000	£3,084	£4,918	188	£1,770	37
Hang Seng	1964 - 2010	£1,000	£202,867	£778,722	385	£52,801	26
CAC 40	1987 - 2010	£1,000	£2,477	£3,698	183	£1,554	38
Average				645%		24%	
				>100%		<100%	
Conclusion		Over perform the index		Underperform compared to the index			

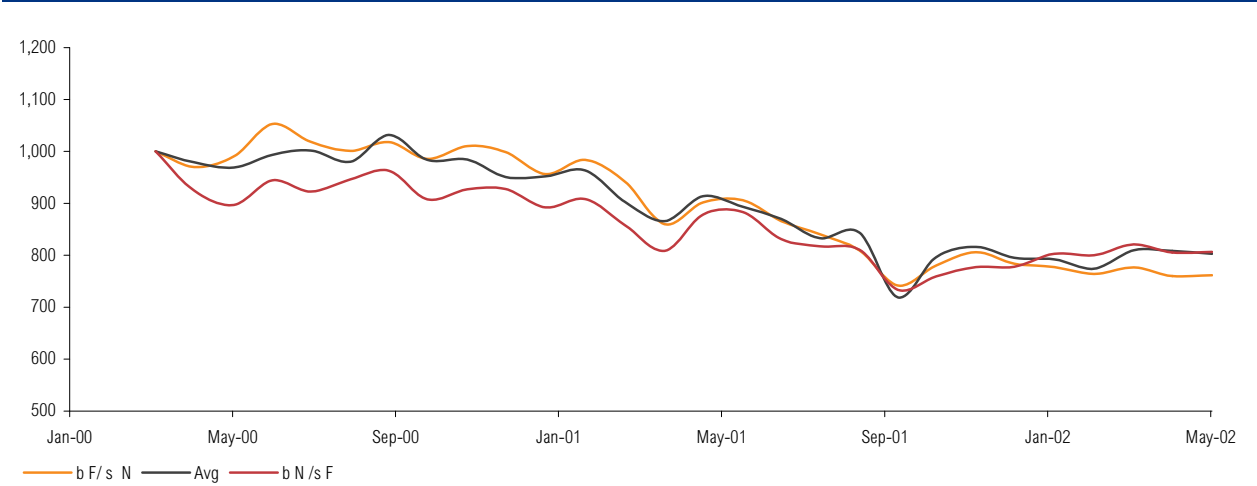
Source: RBS

**Fig. 1. FTSE 100. Data since 1984. If invested £1000 in 1984, by now would have £5130. If carry moon trading buying on the new moon, selling of the full moon, would have £12116**



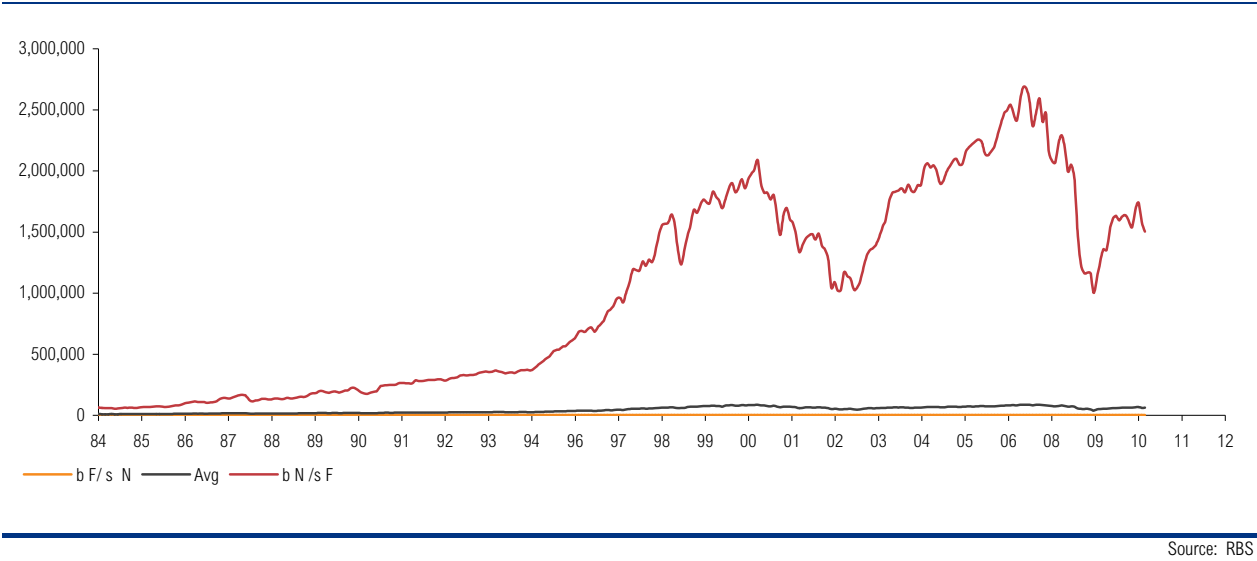
Source: RBS

**Figure 1a. FTSE 100 Falling Markets 2000-02. If £1,000 was invented in 06/03/2000, by 12/05/2002 it would be worth £802. Buying on a New Moon, selling on a Full Moon it would be £806.**

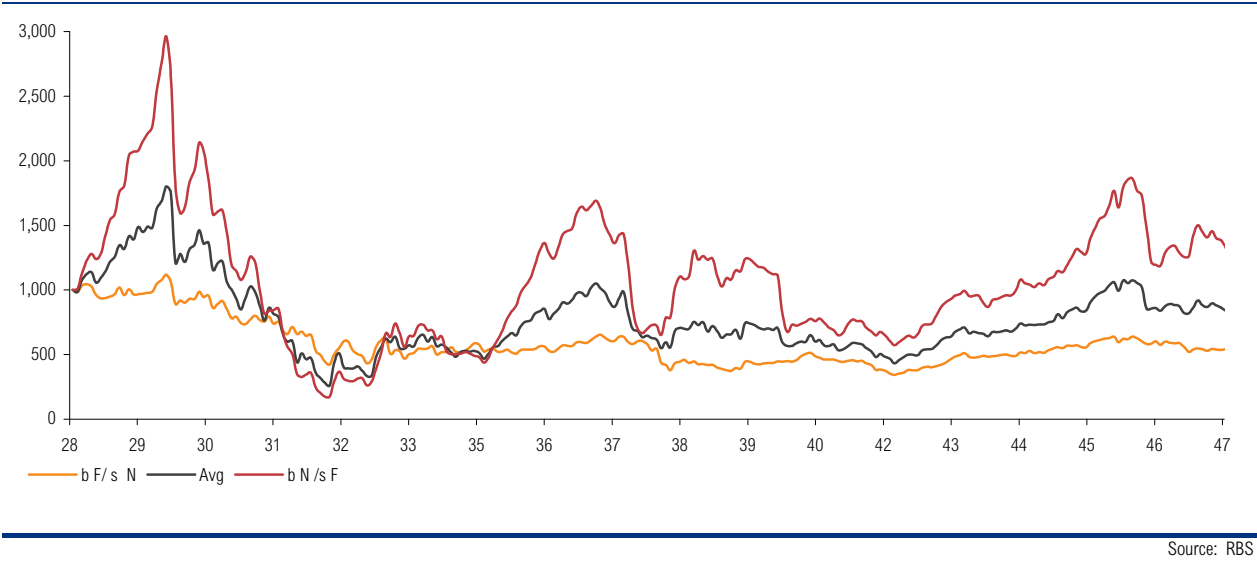


Source: RBS

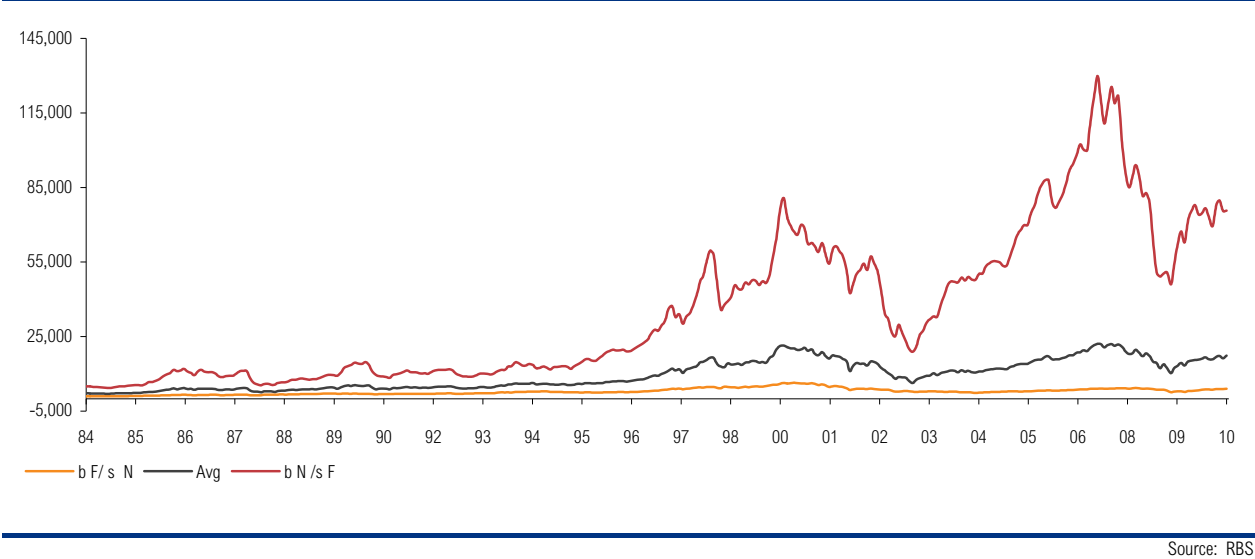
**Figure 2. S&P500 Data since 1928. £1,000 invested in 1928 would be £63,894 today but by buying on the New Moon and selling on the Full Moon it would return £1,502,689**



**Fig. 2a. S&P 500 (Falling markets). Data since 1928. If invested £1000 in 1928, by 1947 would have £867 If carry moon trading buying on the new moon, selling of the full moon, would have £1407**



**Fig. 3. DAX. Data since 1959. If invested £1000 in 1959, by now would have £17361. If carry moon trading buying on the new moon, selling of the full moon, would have £75689**



**Fig. 4. EUROXX50. Data since 1987. If invested £1000 in 1987, by now would have £3084. If carry moon trading buying on the new moon, selling of the full moon, would have £4918**

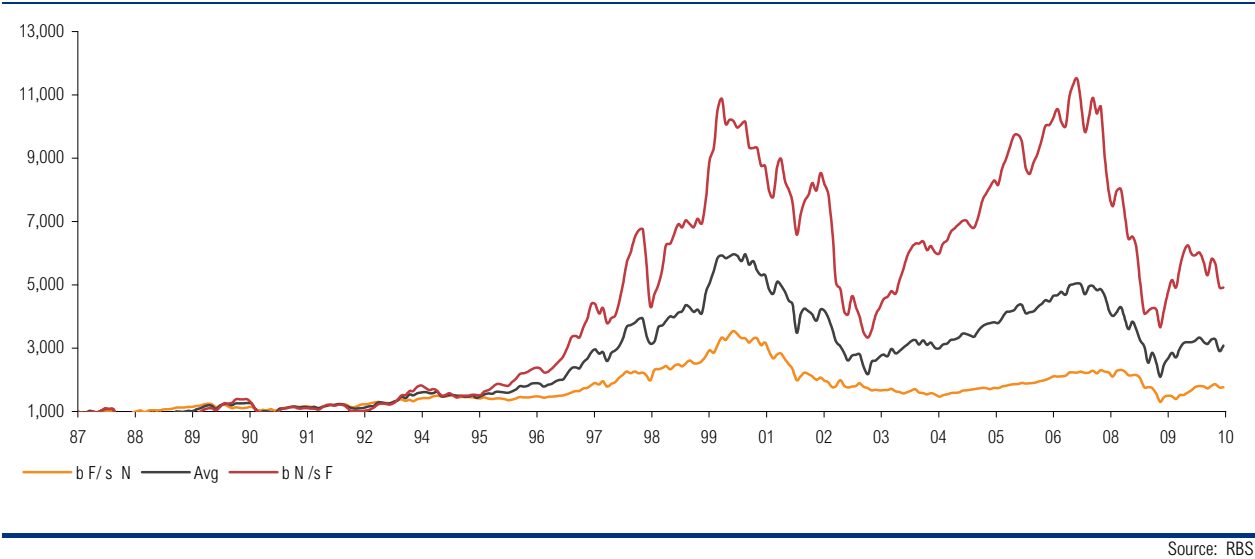


Fig. 4a. EUROXX50 (Zoomed, falling markets)

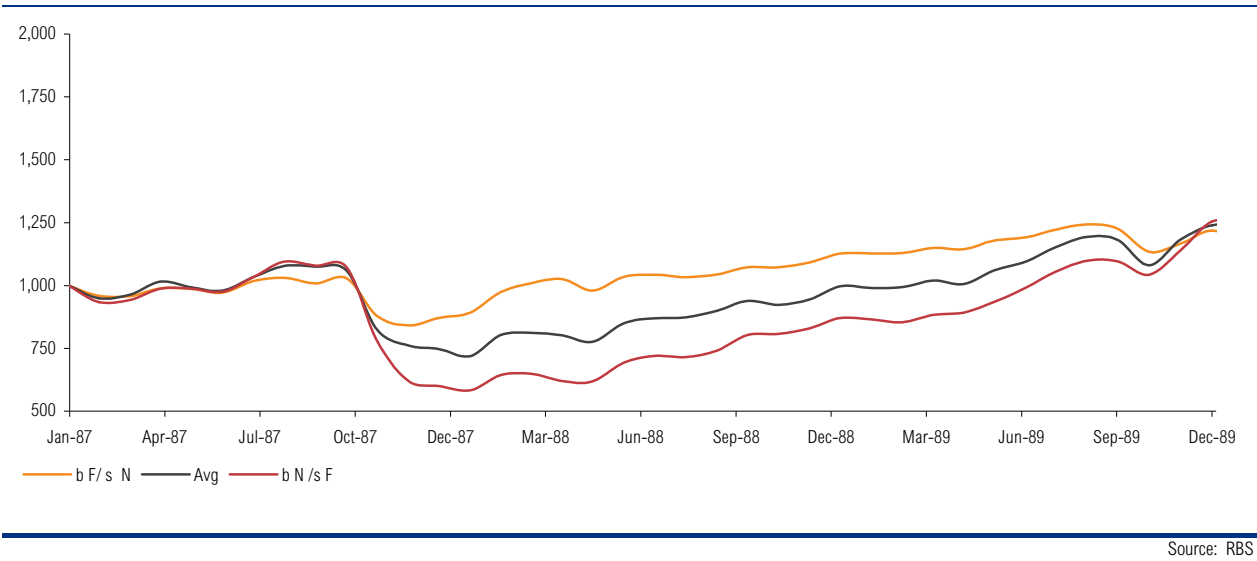
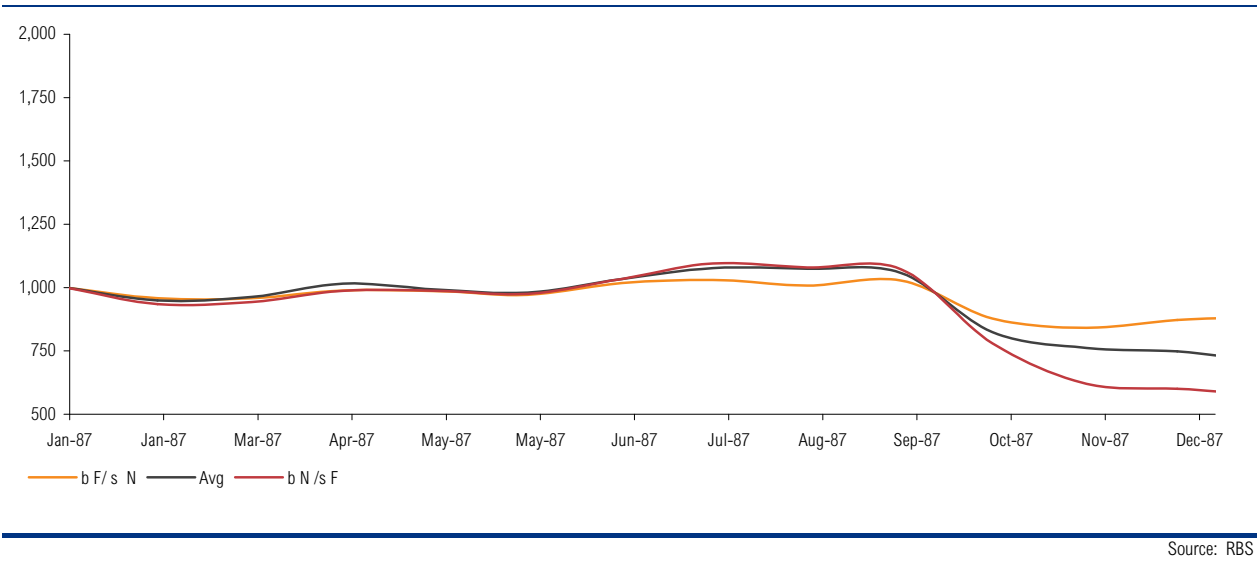
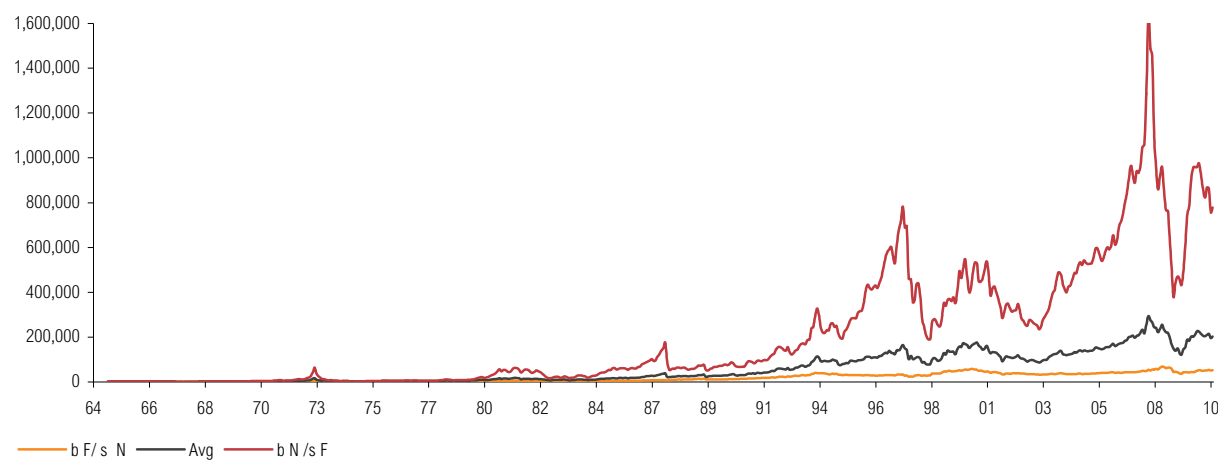


Fig. 4b. EUROXX50 (Zoomed, falling markets)

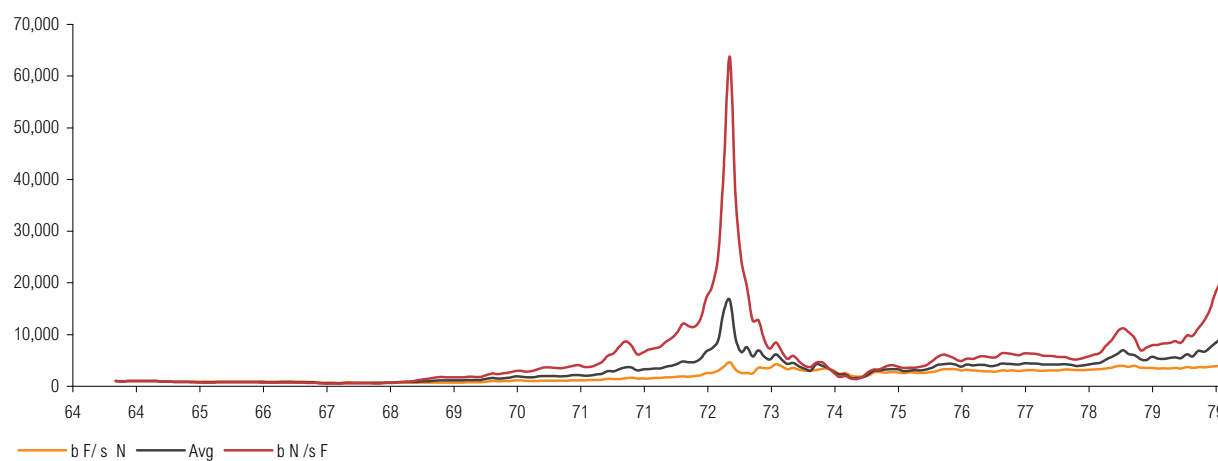


**Fig. 5. Hang Seng. Data since 1964. If invested £1000 in 1964, by now would have £202 867. If carry moon trading buying on the new moon, selling of the full moon, would have £778 722**



Source: RBS

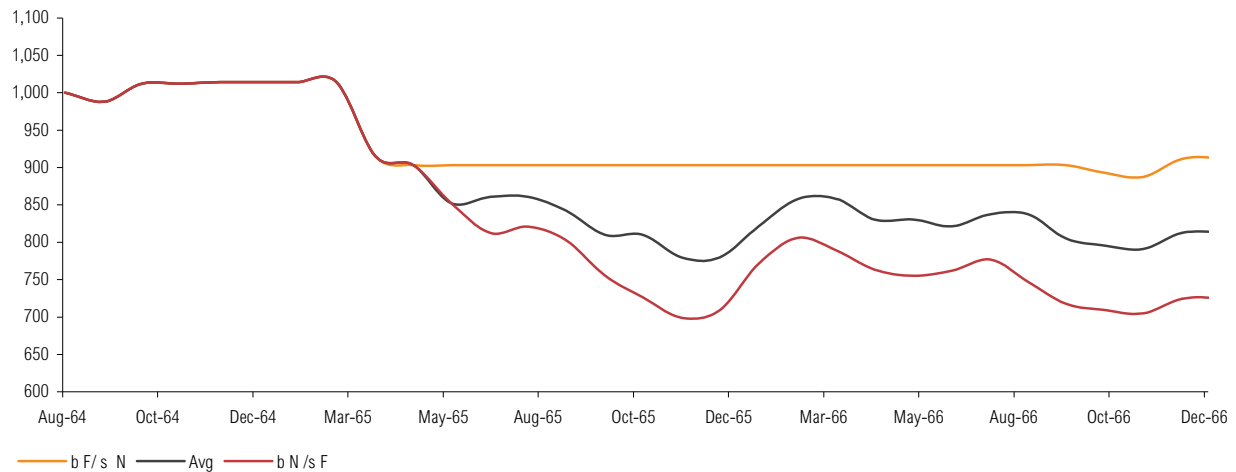
**Fig. 5a. Hang Seng (ZOOM, falling markets)**



Source: RBS

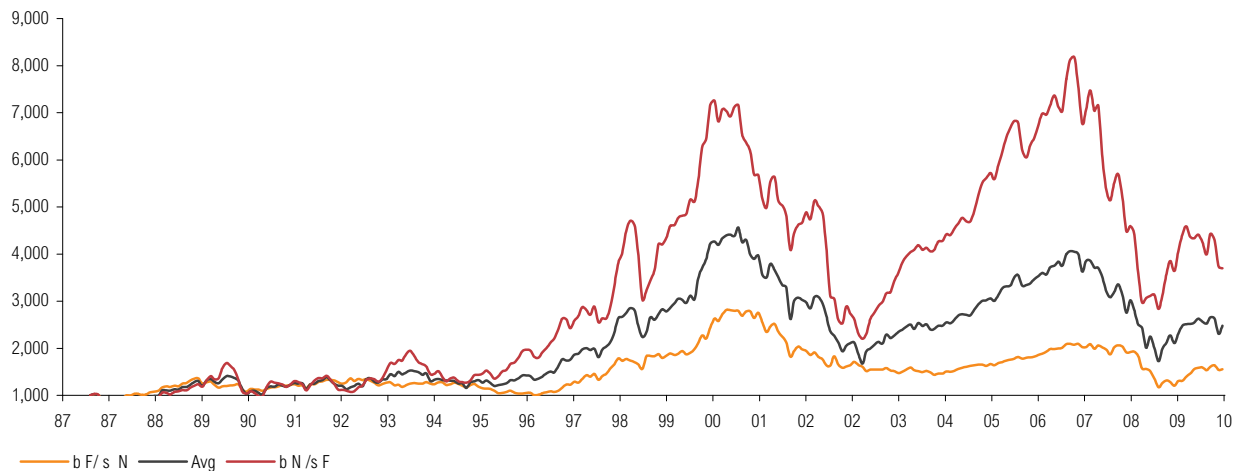


**Fig. 5b. Hang Seng (ZOOM, falling markets)**



Source: RBS

**Fig. 6. CAC 40. Data since 1987. If invested £1000 in 1987, by now would have £2477. If carry moon trading buying on the new moon, selling of the full moon, would have £3697**



Source: RBS

## WHAT ABOUT THE PLANETS?

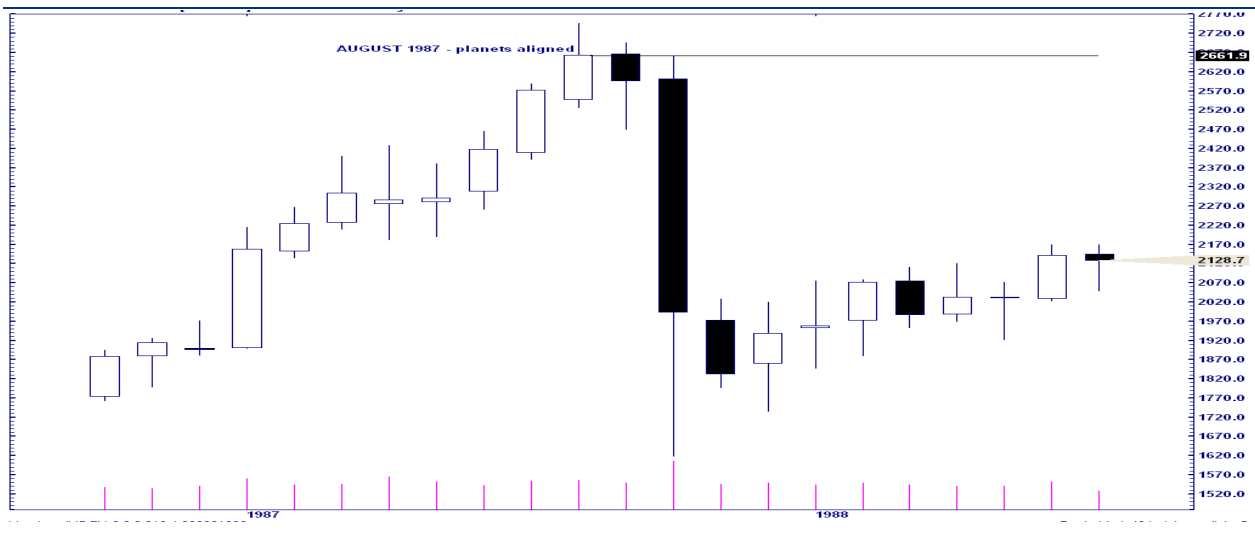
So that's looking as the moon, but what about something even more distant for a bit of fun, but also some consideration is looking at the movement of our heavenly bodies ie, planetary alignments for clues. When the Earth is at the mid-point between 2 planets of 45 90 135 and 180 degrees these are considered as difficult angles and tends to be tough times for stocks.

**On August 24th 1987** - 5 planets were on the same elliptical longitude this last happened 800 years ago. This move preceded the 1987 crash.

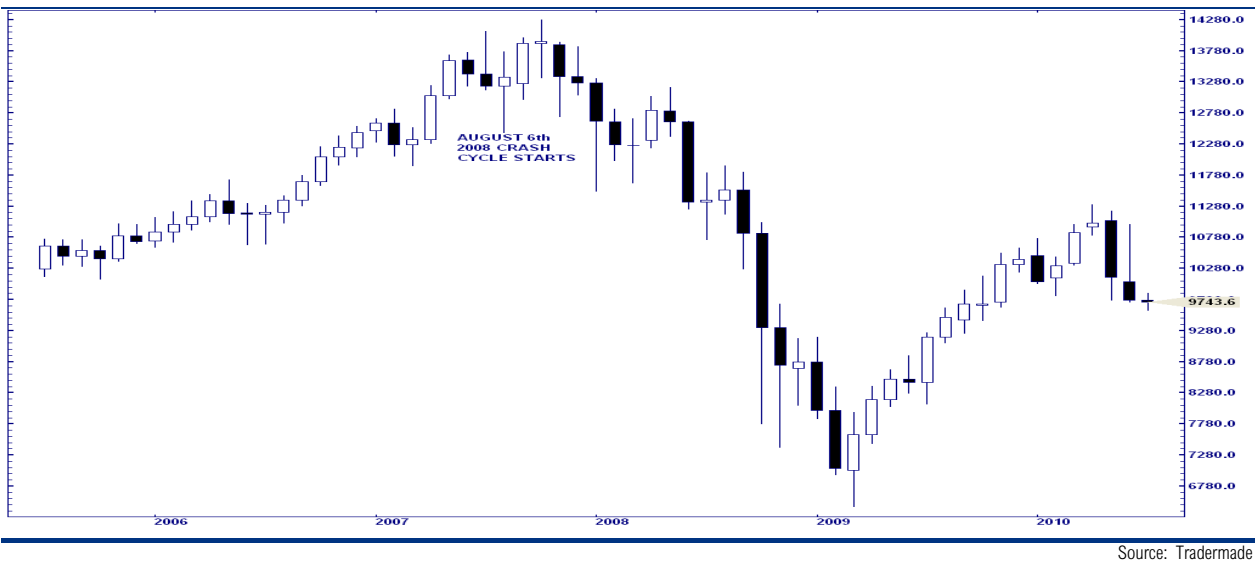
**On August 6<sup>th</sup> 2008** - Mars-Uranus had a crash cycle preceding the 2008 collapse.

**This August 1<sup>st</sup> +/- 1 week 5 planets will be aligned** this will equal a cardinal climax and has not happened in 1,000 years ,so watch out stocks markets. The S&P500 index having formed a Head and Shoulders pattern suggests a breakdown target of 880 in the cash market the 61.8% retracement of the move since the 2008 lows, and for the Dow to 8,300. This is my call to happen by early October so a short sharp decline in stocks is potentially brewing and in turn August should be very positive for Fixed Income products and decent flattening of the curve to continue (favourite fly is 2s10s30s) in the US for Swaps 22bp flatter.

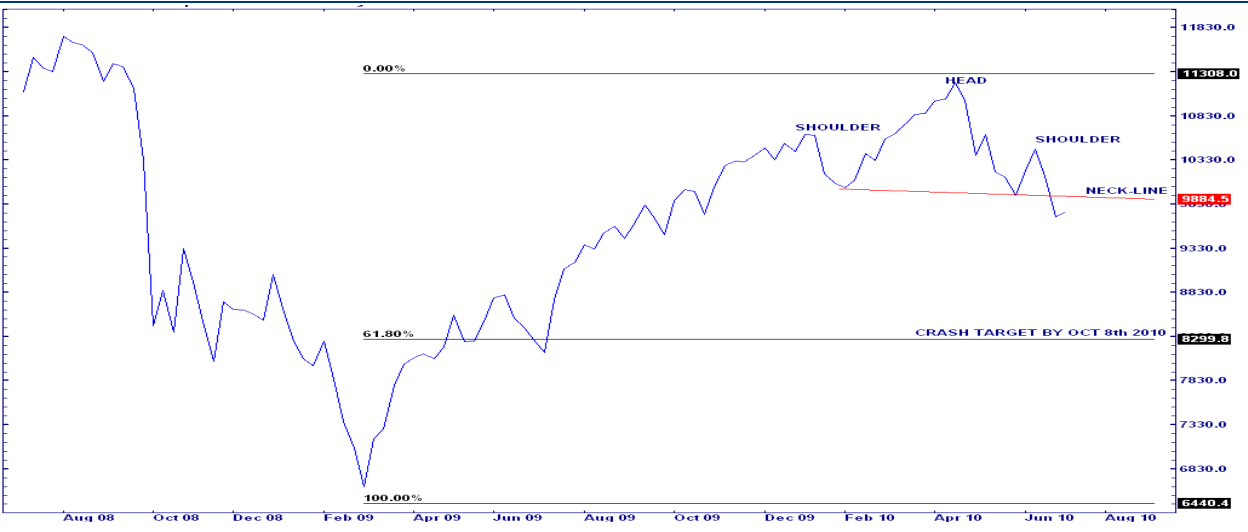
Monthly Dow Jones (Aug 24 1987 5 planets were aligned)



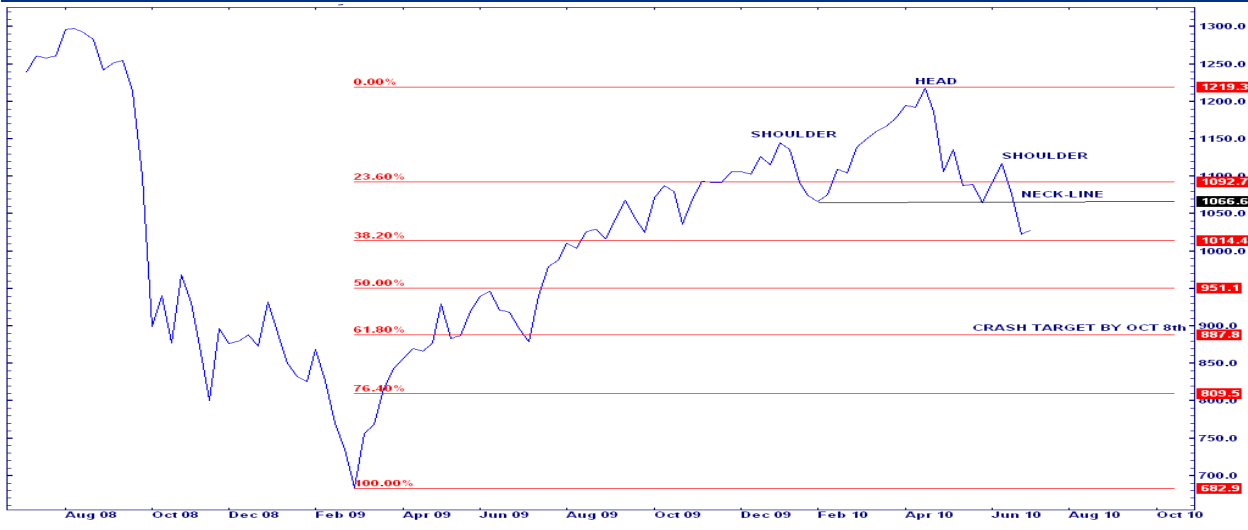
Monthly Dow Jones (Aug 6<sup>th</sup> 2008 Mars – Uranus crash cycle)



Current weekly Dow Jones (line chart) with 8,300 by Oct 8<sup>th</sup> as a crash cycle target depicting a H+S pattern.



Current weekly S&P500 cash (line chart) with 887.00 by Oct 8<sup>th</sup> as a crash cycle target depicting a H+S pattern.



<http://strategy.rbsm.com/disclosures> - View this page for additional Important Disclosure Information for Research Recommendations including Recommendation history.

This material has been prepared by The Royal Bank of Scotland plc ("RBS") for information purposes only and is not an offer to buy or sell or a solicitation of an offer to buy or sell any security or instrument or to participate in any particular trading strategy. This material should be regarded as a marketing communication and may have been produced in conjunction with the RBS trading desks that trade as principal in the instruments mentioned herein. This commentary is therefore not independent from the proprietary interests of RBS, which may conflict with your interests. Opinions expressed may differ from the opinions expressed by other divisions of RBS including our investment research department. This material includes analyses of securities and related derivatives that the firm's trading desk may make a market in, and in which it is likely as principal to have a long or short position at any time, including possibly a position that was accumulated on the basis of this analysis prior to its dissemination. Trading desks may also have or take positions inconsistent with this material. This material may have been made available to other clients of RBS before being made available to you. Issuers mentioned in this material may be investment banking clients of RBS. Pursuant to this relationship, RBS may have provided in the past, and may provide in the future, financing, advice, and securitization and underwriting services to these clients in connection with which it has received or will receive compensation. The author does not undertake any obligation to update this material. This material is current as of the indicated date. This material is prepared from publicly available information believed to be reliable, but RBS makes no representations as to its accuracy or completeness. Additional information is available upon request. You should make your own independent evaluation of the relevance and adequacy of the information contained in this material and make such other investigations as you deem necessary, including obtaining independent financial advice, before participating in any transaction in respect of the securities referred to in this material. Past performance is not necessarily indicative of future results. Certain transactions, including those involving futures, options and products utilising futures and options give rise to substantial risk and are not suitable for all investors.

**THIS MATERIAL IS NOT INVESTMENT RESEARCH AS DEFINED BY THE FINANCIAL SERVICES AUTHORITY.**

**United Kingdom.** Unless otherwise stated herein, this material is distributed by The Royal Bank of Scotland plc ("RBS") Registered Office: 36 St Andrew Square, Edinburgh EH2 2YB. Company No. 90312. RBS is authorised and regulated as a bank and for the conduct of investment business in the United Kingdom by the Financial Services Authority. **Australia.** This material is distributed in Australia to wholesale investors only by The Royal Bank of Scotland plc (Australia branch), (ABN 30 101 464 528), Level 22, 88 Phillip Street, Sydney NSW 2000, Australia which is authorised and regulated by the Australian Securities and Investments Commission, (AFS License No 241114), and the Australian Prudential Regulation Authority. **France.** This material is distributed in the Republic of France by The Royal Bank of Scotland plc (Paris branch), 94 boulevard Haussmann, 75008 Paris, France. **Hong Kong.** This material is being distributed in Hong Kong by The Royal Bank of Scotland plc (Hong Kong branch), 30/F AIA Central, 1 Connaught Road Central, Hong Kong, which is regulated by the Hong Kong Monetary Authority. **Italy.** Persons receiving this material in Italy requiring additional information or wishing to effect transactions in any relevant Investments should contact The Royal Bank of Scotland plc (Milan branch), Via Turati 18, 20121, Milan, Italy. **Japan.** This material is distributed in Japan by The Royal Bank of Scotland plc (Tokyo branch), Shin-Marunouchi Center Building 19F - 21F, 6-2 Marunouchi 1-chome, Chiyoda-ku, Tokyo 100-0005, Japan, which is regulated by the Financial Services Agency of Japan. **Singapore.** This material is distributed in Singapore by The Royal Bank of Scotland plc (Singapore branch), Level 26, One Raffles Quay, South Tower, Singapore 048583, which is regulated by the Monetary Authority of Singapore. RBS is exempt from licensing in respect of all financial advisory services under the (Singapore) Financial Advisers Act, Chapter 110 ("FAA"). In Singapore, this material is intended solely for distribution to institutional investors, accredited investors, and expert investors as defined under the FAA.

**United States of America.** RBS is regulated in the US by the New York State Banking Department and the Federal Reserve Board. The financial instruments described in the document comply with an applicable exemption from the registration requirements of the US Securities Act 1933. This material is only being made available to U.S. persons that are also Major U.S. institutional investors as defined in Rule 15a-6 of the Securities Exchange Act 1934 and the interpretative guidance promulgated there under. Major U.S. institutional investors should contact RBS Securities Inc., a member of FINRA (Financial Industry Regulatory Authority), if they wish to effect a transaction in any Securities mentioned herein.

The Royal Bank of Scotland plc. Registered in Scotland No. 90312. Registered Office: 36 St Andrew Square, Edinburgh EH2 2YB.