

# Profit All Day Dash Board

Profit All Day Alert Dash Board

Pair		ma	cci	frc	brk	I-s	SP	Bid	Ask	RNG20	RNGtd	H-TP	H-SL
EURJPY	+	H1	M15			+	4.5	113.036	113.081	114	67	0	0
GBPJPY	+	H1	M15			+	6.9	133.517	133.586	140	96	0	0
USDCHE	+	H1	M15			+	4.6	0.97297	0.97343	106	97	0	0
USDJPY	+	H1	M15			+	3.4	83.438	83.472	72	46	0	0
EURGBP	+	H1	M15			+	4.8	0.8463	0.84678	76	53	0	0
EURCHF	+	H1	M15			+	5	1.31817	1.31867	131	77	0	0
GBPUSD	+	H1	M15			+	4.6	1.59998	1.60044	139	149	0	0
EURUSD	+	H1	M15			+	2.3	1.35461	1.35484	144	123	0	0
GBPCHF	+	H1	M15			+	8.6	1.55705	1.55791	176	96	0	0

Exit Stop Contig Ctr All

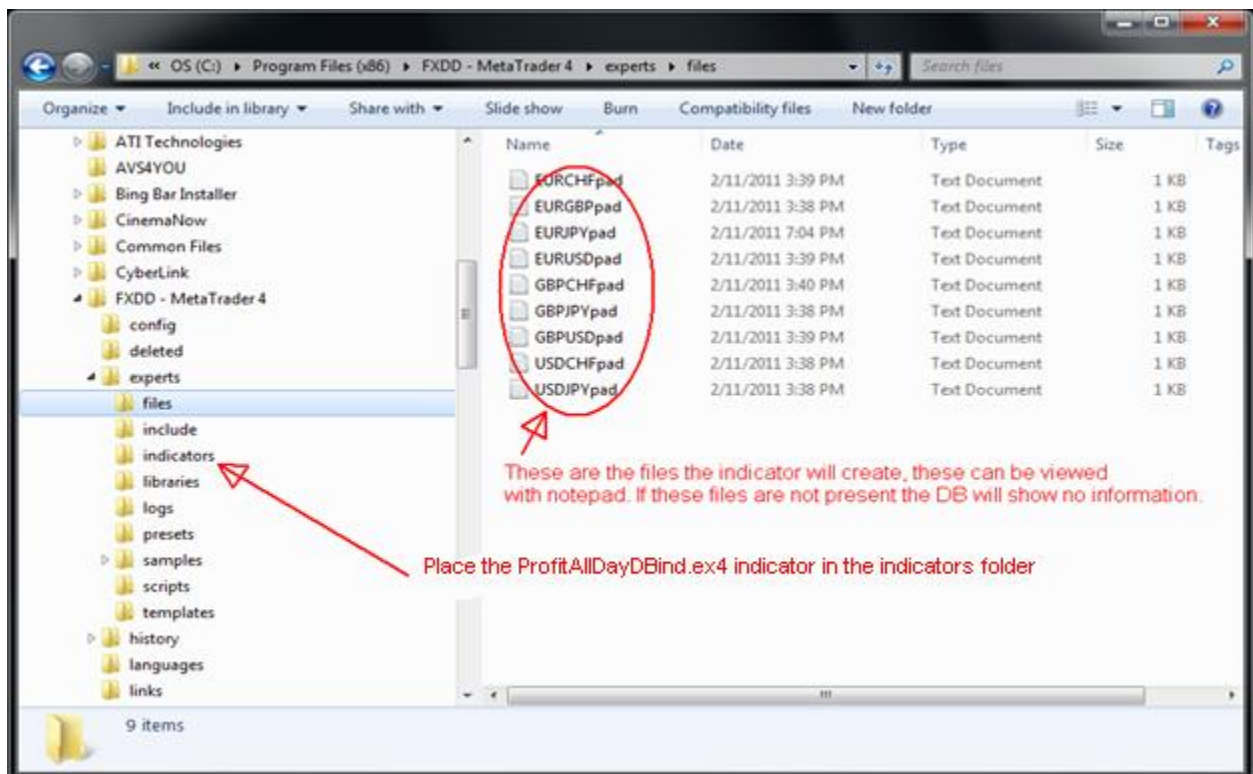
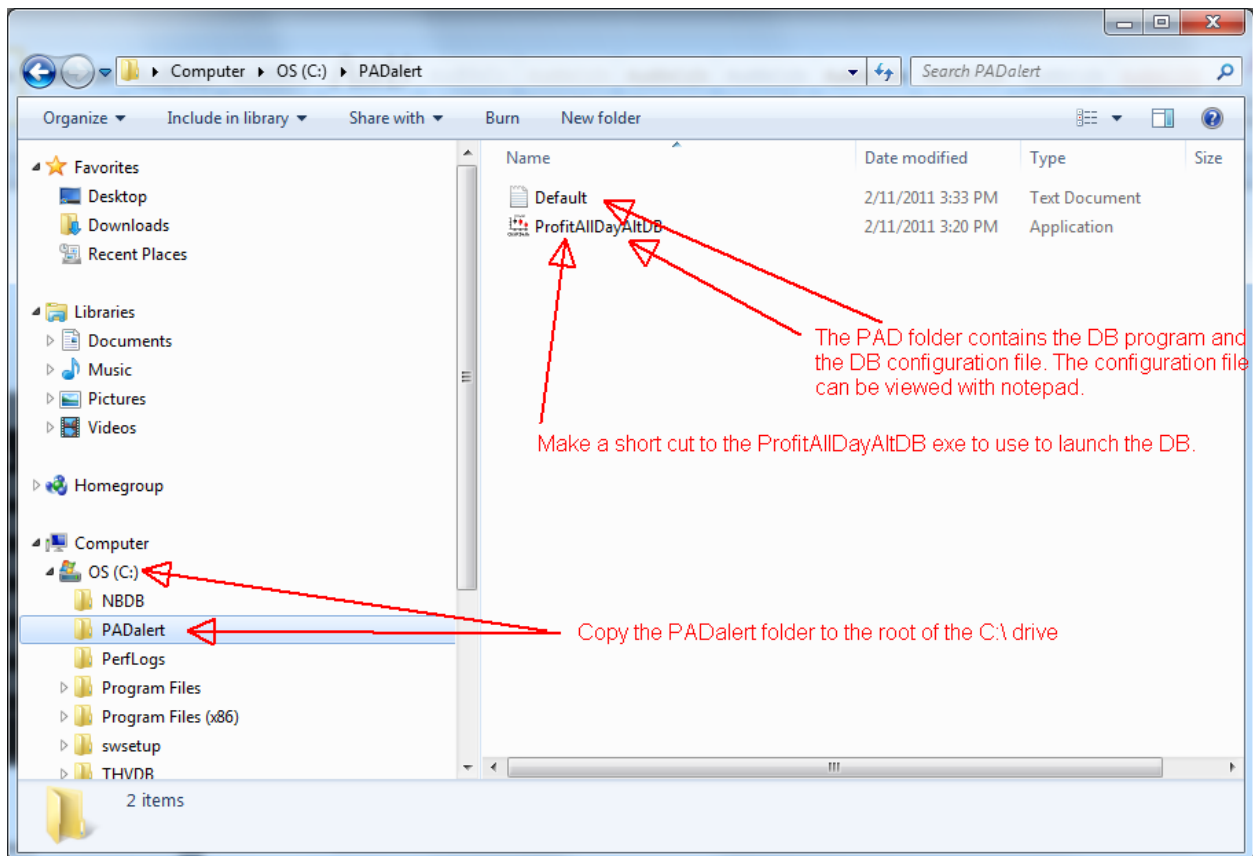
All example screen shots were taken with the Dash Board running under Windows 7, so yours may look different under XP.

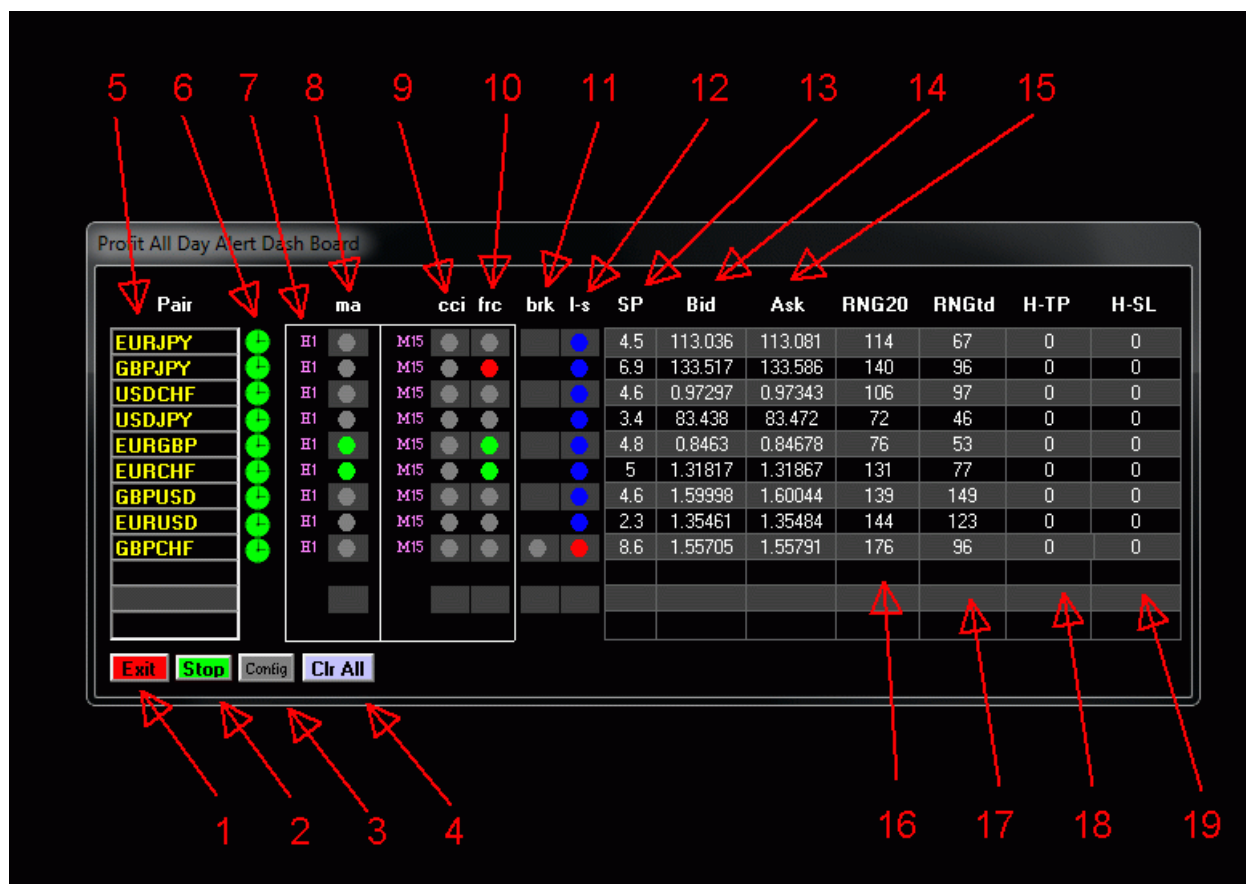
The PAD DB is a standalone piece of software that reads data from a file that was created by an MT4 indicator that was placed on 1 to 12 charts. If you have more than 12 charts you can run more than one copy of the Dash Board. The DB follows along with the rules set forth in the PAD Forum. The following are what can be monitored for each pair: Cross of the 3 different MAs, CCI greater or less than a set value, last H/L fractal, break of trend line, long or short trade, and pip 20 day and daily range..

The indicator that is attached to each chart creates a file of all this information and places it in the MT4 files folder under the experts folder. The DB then reads this file every 30 seconds and places the information on the DB.

## Installation

Copy the PADalert folder to the root of the "C" drive. ProfitAllDayAlertDB.exe (located in the PADalert folder) will launch the Dash Board so make a short cut to it if you like on your desk top or program files folder. I have not created an installation program for this program, I have found it to run on all the different PCs I have tried it on, if you have problems you are on your own. The configuration files are also located here in the PADalert folder and can be viewed with Note Pad. Place the ProfitAllDayDBind.ex4 file in the indicators folder of your MT platform, this is the indicator that gets placed on each chart.



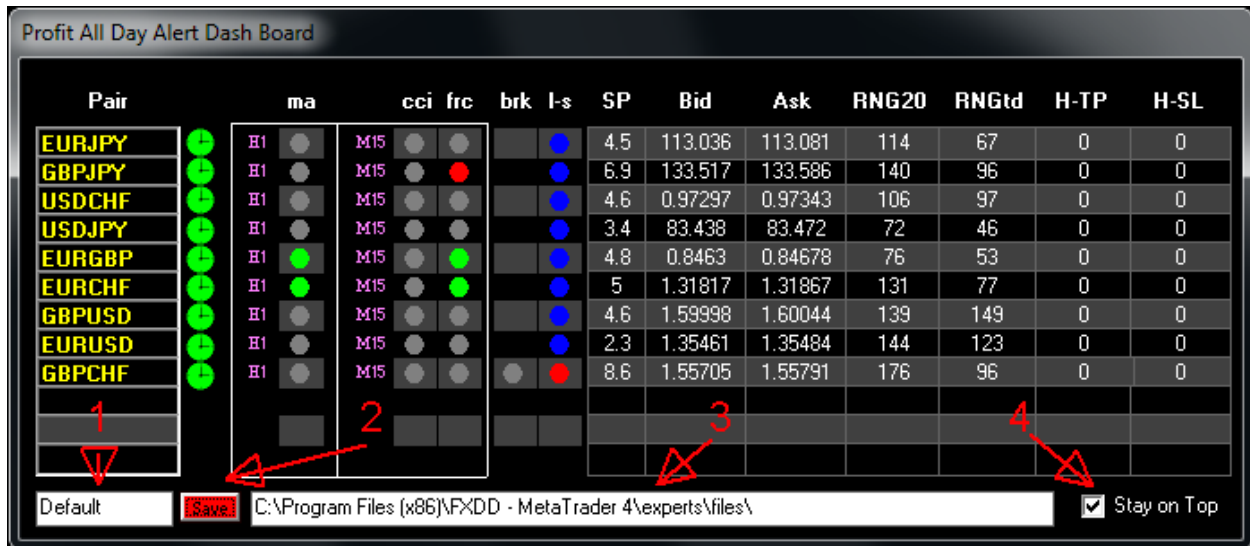


## Dash Board

- 1) Click to exit Dash Board
- 2) Starts and Stops the collection of data from the files created by the indicator
- 3) Opens the configuration window and then changes to a save button so you can save it
- 4) Clears all and restarts the DB
- 5) Enter your pairs in these 12 places, they must match the names in the files folder. Background turns Green or Red to show Buy or Sell alert.
- 6) These clocks tell you if you are in your trading time window as set in the indicator. Green if you are OK to trade and Red if not.
- 7) This is the time period you have set in the indicator.
- 8) Ma cross alert: Red/Green
- 9) CCI alert: Red/Green
- 10) Fractal break alert Red/Green
- 11) Trend Line break alert: red/Green, Will be blank if not used
- 12) Green=Long, Red=Short, Blue=Both Long and Short.
- 13) Spread
- 14) Bid
- 15) Ask

- 16) Last 20 Day average PIP range
- 17) Todays PIP range so far
- 18) Take Profit appears when trade is alerted
- 19) Stop Loss appears when trade is alerted

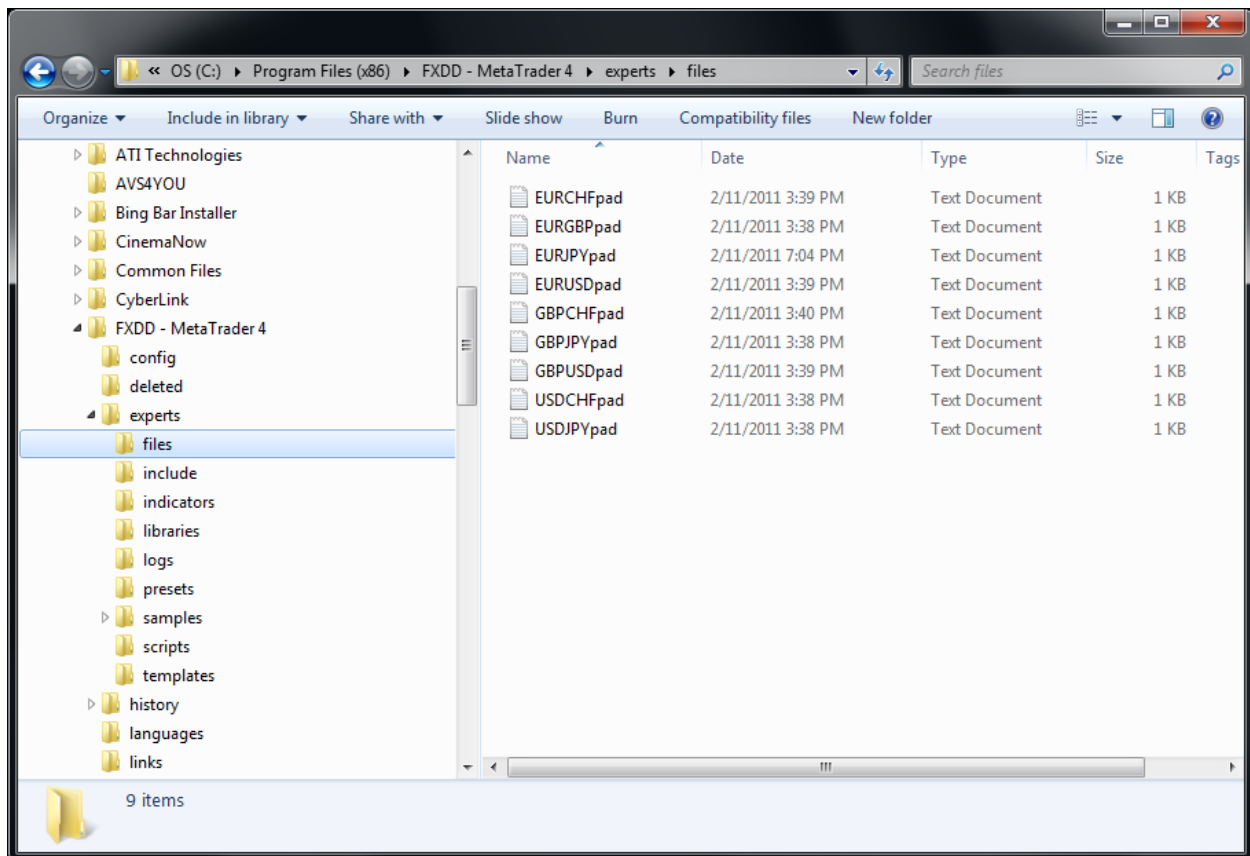
## Configuration



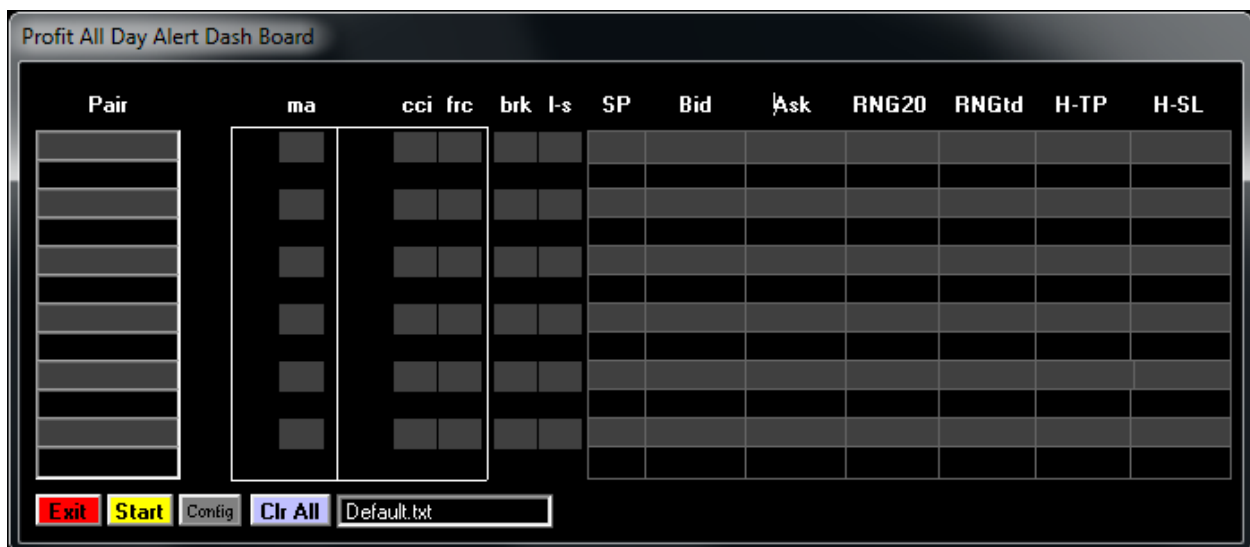
To configure the DB first launch the DB then click the Config Button and the DB will then look like the picture above. In box 1 you can type the name you want to save these configuration settings under. In box 3 you must type the exact path to the files folder, be sure to put the \ at the end or it will not work and you will get a path can't be found error. If you want the DB to stay on top of all your other windows, put a check in the Stay on Top box. Now click the Save Button and the configuration will be saved to the PADalert folder, it can be viewed with notepad. Click the Exit Button to close the dash Board.

## Getting Started

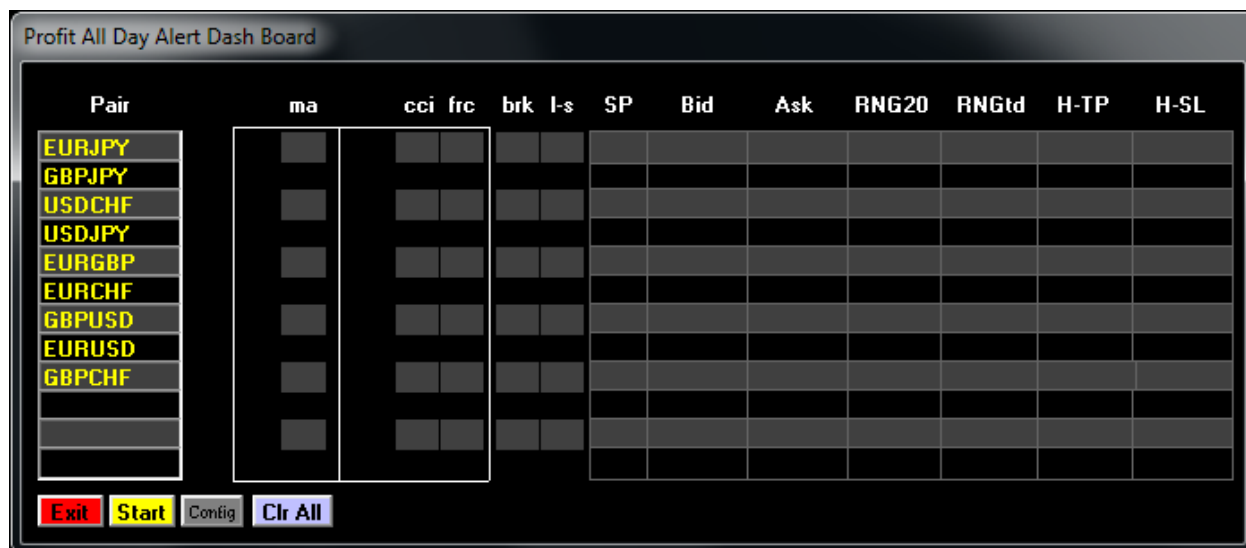
To get started you should first open your MT4 platform and attach the ProfitAllDayDBind.ex4 indicator to the charts you will want to monitor. Also set the settings to what you want for each chart, every chart can have different settings if you like. You can only have the indicator placed on one chart of each pair as the indicator will over write any file with the same name. Once these are all set up check your files folder and make sure you have files that look similar to the picture shown below. In this case I have the indicator placed on 9 different pairs. This is what they must look like when you enter them into the DB, the order does not matter but if they have a ".txt" after them do not enter that in the DB configuration step. Also do not enter the "pad" at the end of the pair name.



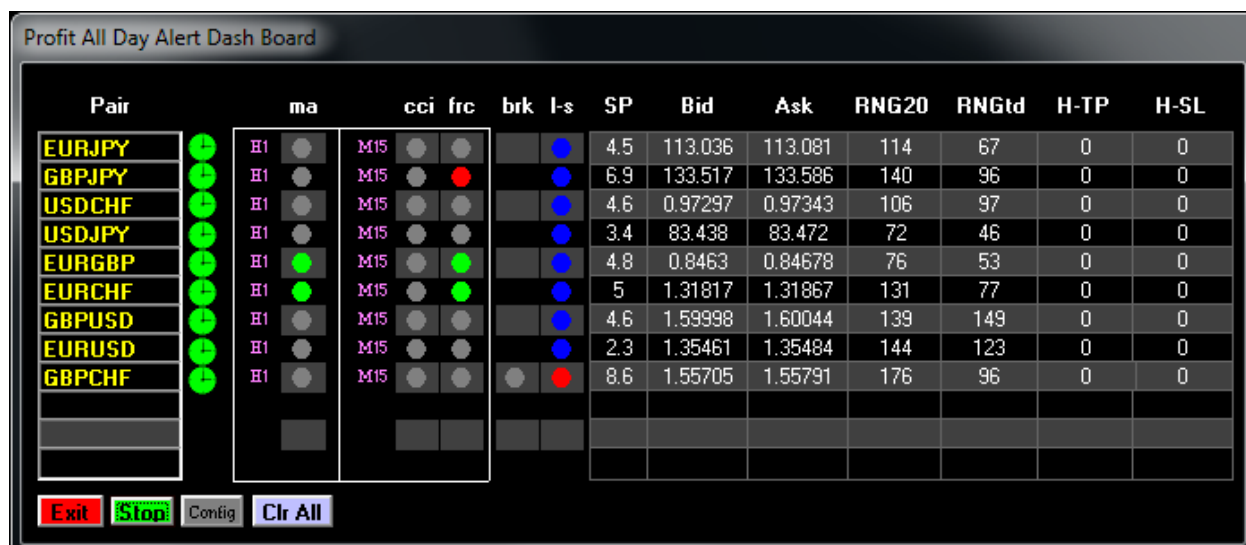
Now you can launch the DB and it should look like this. In the box that says “Default.tx” you should see the name you saved your configuration settings under, click it. If you don’t see it, use the scroll arrows on the right side of the box to find it.



Now you should have something similar to the next image.



Now click the “Start” Button and something similar to the next picture should appear in 30 seconds.



## Indicator Settings

LongTrade: Set to false if you don’t want to take any Long Trades

Short Trade: Set to false if you don’t want to take any Short Trades.

FirstTPmulSL: Multiplier used to calculate Take Profit. If decimal put a zero in front of decimal point

FractalBreakPIPS: PIPs added to fractal break

StopLossOffSetPIPS: PIPs added to Stop Loss fractal

StartHour: Trading hour start

EndHour: Trading hour stop

FractalPeriod: Chart period used by fractals regardless of chart being used

cciPeriod: Chart period used by cci regardless of chart being used

cciLevel: cci trigger level, positive number only, don't use "-" number

maPeriod: Chart period used by MAs regardless of chart being used

ma3: Shortest MA settings

ma5: medium MA settings

ma13: Longest MA settings

TrendLineBuyAlert: Set to true to use this

TrendLineSellAlert: Set to true to use this

DailyRange: Set this to true if you want this to be part of the alert

RangePerCent: Percent of range to be allowed before alert

The rest should be obvious

The default indicator settings are set up for the H1 and M15 time periods and the alerts should correspond to Profit All Day basic settings explained in the forum. The indicator can be placed on any chart time frame as all time periods used to calculate the alerts are determined by the settings in the indicator set up window.

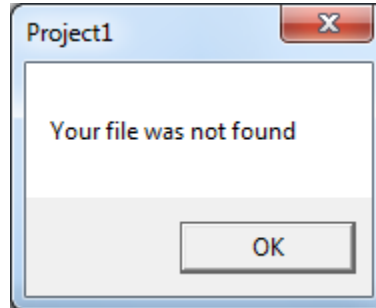
## Problems

**No Data appears in Dash Board:** Check your Files folder and make sure the Indicator is creating these text files. If they are there make sure you have specified the correct path in the configuration set up. Also make sure the PAIRs listed in the DB are spelled exactly like the ones in the Files folder, do not put any extension such as .txt on these in the DB PAIR boxes.

**I have more than 12 PAIRs:** You can run more than one DB at a time and have 12 pairs on each DB, they can even point to the same files folder, just list different pairs on the second DB. So you could have 24 Pair files in the files folder (all different) and be running two Dash Boards and have 12 different pairs on each Dash Board. Listing the same pair on two different Dash Boards work, but the alerts will be the same as only one data file with that name can be created. If you have the same pair on two charts and also have the same indicator on both of these charts one will over write the other and the output will vary, so don't do it.

**Don't list missing PAIRs in DB:**

If the DB when scanning through the listed PAIRs comes across one that does not have a corresponding file it will stop the DB scan update at that point and a warning box will pop up. So don't put any PAIRs in the DB that don't have a matching file in the files folder.



**DB doesn't update on every tick:**

The DB and indicator files only update every 30 seconds to save on hard drive usage. If you want to see how the DB works on a weekend you can, but it will only update once for each pair as the indicator is launched. After that since no ticks are coming in it will not update again. There are programs that create ticks that you could use if needed, one is called mt4\_ticker.exe.

## Disclaimer

The information provided in this User Guide is not intended for distribution to or for the use by any person or entity in any jurisdiction or country where such distribution or use would be contrary to law or regulation or which would be subject to any registration requirement within such jurisdiction or country.

The resale or repackaging of this software or manual is prohibited.

The ideas used to create this software have come from too many sources to create a comprehensive list but to learn more in depth usage of the alerts used please visit the Forums at Forex Factory.

## Examples

These examples show how you can use the Trend Lines and Long Trade or Short Trade filters to make PAD even better and filter out some of the noise. These examples are all from the H1 M15 time periods but the same idea can be used on other time frames also.

These may not be the perfect examples so don't tell me I put the lines in the wrong place as we all have our own opinion as to where they should go.



