

Run FFcal.EXE and set the parameters as shown below. Take careful note that you have the highlighted fields correct. Then click OK.

**Build News.CSV from FF calendar**

**History update from weekly FF Calendar**

- ☒ Update Events History database from FF calendar
- FF calendar format:
- Download data from FF calendar starting from what date (format: mm/dd/yyyy):
- Number of weeks' worth of data to load:  ☐ Auto set
- No. of hours your MT4 is ahead of FF calendar:
- ☒ Automatic calendar load (uses WGET.EXE)  
Note: if unchecked, you must first manually save the relevant week's FF Calendar as "ffcalout" in the same folder as this EXE
- ☐ Convert 2006 currency names
- ☒ Include Non-Economic events as Low Impact
- ☒ Include untimed events ("Tentative", "All day" etc)
- ☒ Include unvalued events ("... speaks", "... Minutes" etc)

**Settings for output from History to News.CSV**

Path\name of output (News.CSV) file (name is mandatory, must exist, unless omitted, then assumes same folder as EXE):

☐ Include auxiliary data (swaps, Sundays, etc)

No. of hours your local time is ahead of your MT4 time:

☐ 24 hr format ☐ Use local time in exports

Default chart for vertical spacing (1,5,15,30,60,120, min):

Output only events starting on:

Output only events ending on:

☐ Show only on relevant currency charts

☐ Omit events with no 'Actual' value

Show on:

- ☒ M1 charts ☐ H4 charts
- ☒ M5 charts ☐ Daily charts
- ☒ M15 charts ☐ Weekly charts
- ☒ M30 charts ☐ Monthly charts
- ☒ H1 charts

Show only events whose descriptions contain only:

or:

or:

or:

Wingdings symbol output (\* enter 0 to omit output)

ALL	139	0	139
* USD	140	1	140
* CAD	141	2	141
* EUR	142	3	142
* GBP	143	4	143
* CHF	144	5	144
* JPY	145	6	145
* AUD	146	7	146
* NZD	147	8	147
* Other	148	9	148

Color for impact levels (enter 0 to omit output)

Low	1	1
Medium	2	2
High	3	3

1 2 3 4 5 6

7 8 9 10 11

Descr Line #1: what to output first

☒ Time ☐ Date

☐ Currency ☐ Event descr

Export (news only) also to XML / CSV (Excel)

☐ No ☐ XML ☒ Tab ☐ Char ☐ Cols

D.Fmt (D#,M#,Y#)  Path/filename

☐ Numbers only

☒ Date ☒ Time ☒ Currency ☒ Description ☒ Impact

☒ Actual ☒ Forecast ☒ Previous ☒ Revised from ☒ FF ID code

**NCI**

Outputs ☐ ☒ Auto

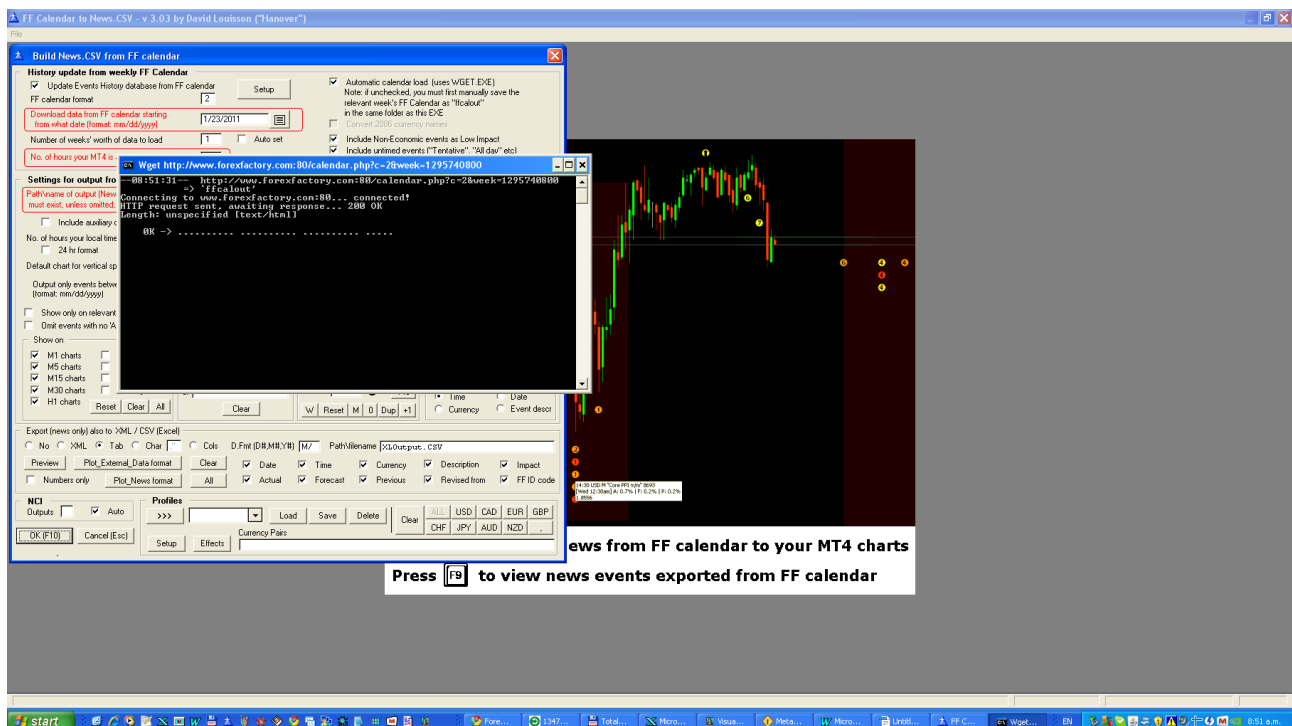
**Profiles**

>>>

Currency Pairs

ALL	USD	CAD	EUR	GBP
CHF	JPY	AUD	NZD	.

You should see a black window with white dots appear in the following screenshot. This means that FFcal.EXE is downloading the data from FF.



When the process is complete (allow 15-30 seconds), you should see the screen below:

View News Events History database

Date / Time	Currency / Descr	Descr / Currency							
Date	Time	Country	Description	Impact	Actual	Forecast	Previous	Rev. From	FF ID
Tue 25 Jan 2011	21:00	USD	President Obama Speaks	M					37311
Wed 26 Jan 2011	0:00	JPY	BOJ Monthly Report	M					36517
Wed 26 Jan 2011	0:01	ALL	WEF Annual Meetings <<AllDay>>	M					37086
Wed 26 Jan 2011	2:00	EUR	German Import Prices m/m	L	2.3%	1.3%	1.2%		36606
Wed 26 Jan 2011	4:00	EUR	Italian Retail Sales m/m	L	-0.3%	0.1%	0.3%		36726
Wed 26 Jan 2011	4:30	GBP	BBA Mortgage Approvals	M	28.7K	29.9K	29.7K	30.0K	37052
Wed 26 Jan 2011	4:30	GBP	MPC Meeting Minutes	H	2-0-7	1-0-8	1-0-8		32726
Wed 26 Jan 2011	10:00	USD	New Home Sales	H	329K	302K	280K	290K	33960
Wed 26 Jan 2011	10:30	USD	Crude Oil Inventories	M	4.8M	0.9M	2.6M		36942
Wed 26 Jan 2011	14:15	USD	Federal Funds Rate	H	<0.25%	<0.25%	<0.25%		32632
Wed 26 Jan 2011	14:15	USD	FOMC Statement	H					32633
Wed 26 Jan 2011	15:00	NZD	Official Cash Rate	H	3.00%	3.00%	3.00%		32799
Wed 26 Jan 2011	15:00	NZD	RBNZ Rate Statement	H					32800
Wed 26 Jan 2011	18:30	AUD	MI Leading Index m/m	M	0.0%		0.3%		34554
Wed 26 Jan 2011	18:50	JPY	Trade Balance	M	0.71T	0.53T	0.54T	0.43T	37243
Thu 27 Jan 2011	0:01	ALL	WEF Annual Meetings <<AllDay>>	M					37087
Thu 27 Jan 2011	0:01	EUR	German Prelim CPI m/m <<AllDay>>	M	-0.5%	-0.3%	1.0%		33475
Thu 27 Jan 2011	6:00	GBP	CBI Realized Sales	M	37	37	56		35955
Thu 27 Jan 2011	8:30	USD	Core Durable Goods Orders m/m	H	0.5%	0.9%	4.5%	2.4%	33997
Thu 27 Jan 2011	8:30	USD	Durable Goods Orders m/m	M	-2.5%	1.6%	-0.1%	-1.3%	34044
Thu 27 Jan 2011	8:30	USD	Unemployment Claims	H	454K	407K	403K	404K	35332
Thu 27 Jan 2011	10:00	USD	Pending Home Sales m/m	H	2.0%	0.9%	3.1%	3.5%	34843
Thu 27 Jan 2011	10:30	USD	Natural Gas Storage	L	-174B	-121B	-243B		35333
Thu 27 Jan 2011	18:30	JPY	Household Spending y/y	M	-3.3%	-0.6%	-0.4%		35570
Thu 27 Jan 2011	18:30	JPY	National Core CPI y/y	L	-0.4%	-0.4%	-0.5%		35571
Thu 27 Jan 2011	18:30	JPY	Tokyo Core CPI y/y	M	-0.2%	-0.3%	-0.4%		35572
Thu 27 Jan 2011	18:30	JPY	Unemployment Rate	L	4.9%	5.1%	5.1%		35573
Thu 27 Jan 2011	18:50	JPY	Monetary Policy Meeting Minutes	M					36529
Thu 27 Jan 2011	18:50	JPY	Retail Sales y/y	M	-2.0%	0.6%	1.5%	1.3%	36810
Thu 27 Jan 2011	19:01	GBP	GfK Consumer Confidence	M	-29	-20	-21		35355
Fri 28 Jan 2011	0:01	ALL	WEF Annual Meetings <<AllDay>>	M					37088
Fri 28 Jan 2011	4:00	EUR	M3 Money Supply y/y	M	1.7%	2.1%	2.1%	1.9%	35502
Fri 28 Jan 2011	4:00	EUR	Private Loans y/y	L	1.9%	2.3%	2.0%		35501
Fri 28 Jan 2011	5:30	CHF	KOF Economic Barometer	H	2.10	2.09	2.11	2.10	36632
Fri 28 Jan 2011	6:00	USD	Treasury Sec Geithner Speaks	M					37312
Fri 28 Jan 2011	8:00	CAD	BOC Gov Carney Speaks	M					37316
Fri 28 Jan 2011	8:30	USD	Advance GDP Price Index q/q	M	0.3%	1.7%	2.1%	2.3%	34724
Fri 28 Jan 2011	8:30	USD	Advance GDP q/q	H	3.2%	3.5%	2.6%	2.3%	34723
Fri 28 Jan 2011	8:30	USD	Employment Cost Index q/q	M	0.4%	0.5%	0.4%		35305
Fri 28 Jan 2011	9:55	USD	Revised UoM Consumer Sentiment	M	74.2	73.1	72.7		33533
Fri 28 Jan 2011	9:55	USD	Revised UoM Inflation Expectations	L	3.4%		3.3%		33534
Sat 29 Jan 2011	0:01	ALL	WEF Annual Meetings <<AllDay>>	M					37089

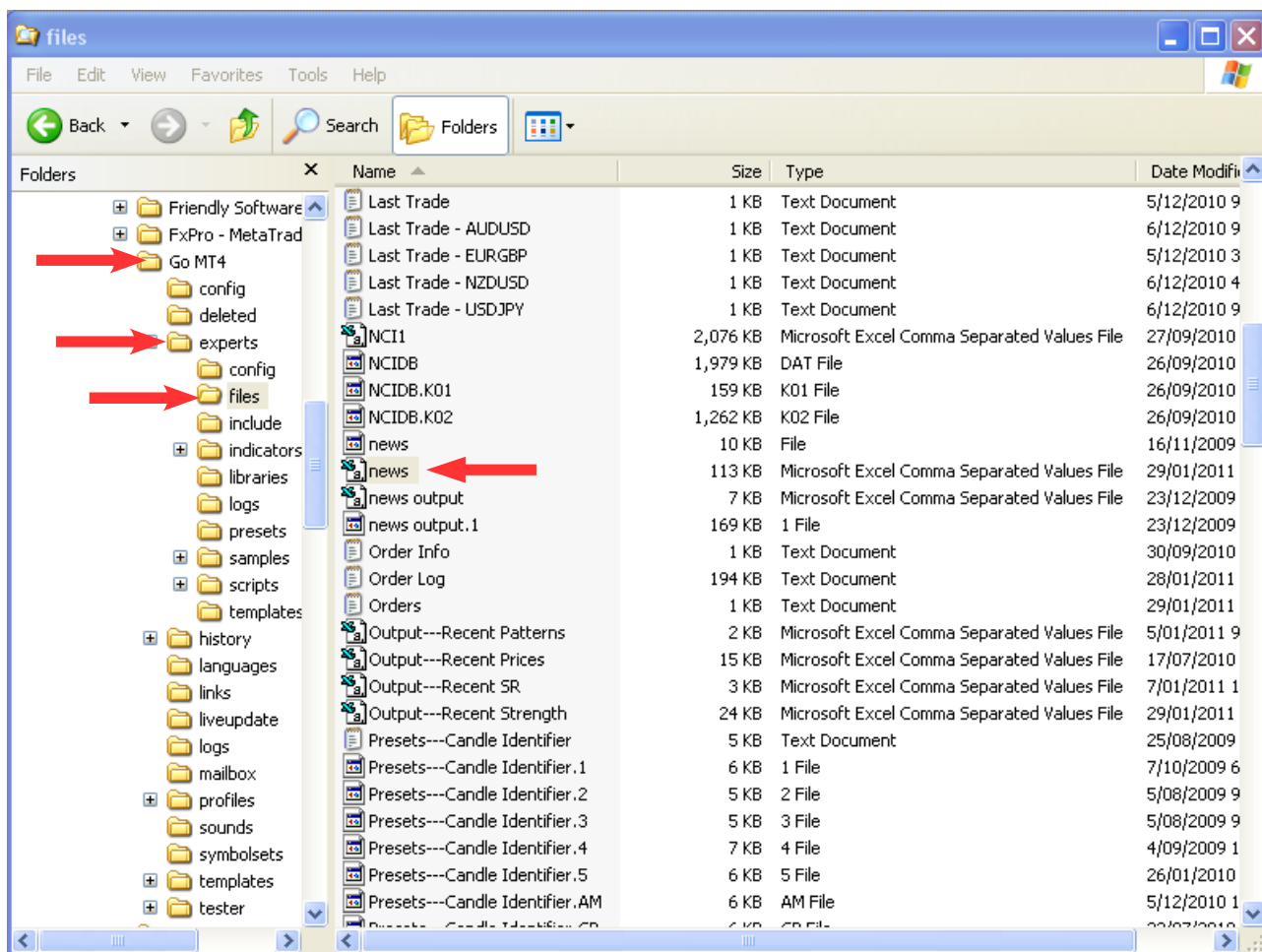
Insert (Ins)    Change (Enter)    Delete (Del)    Exit (Esc)

Press the END key to go to the last news events in the file. You should see something like the screenshot above, where events up to 29 Jan 2011 have been downloaded.

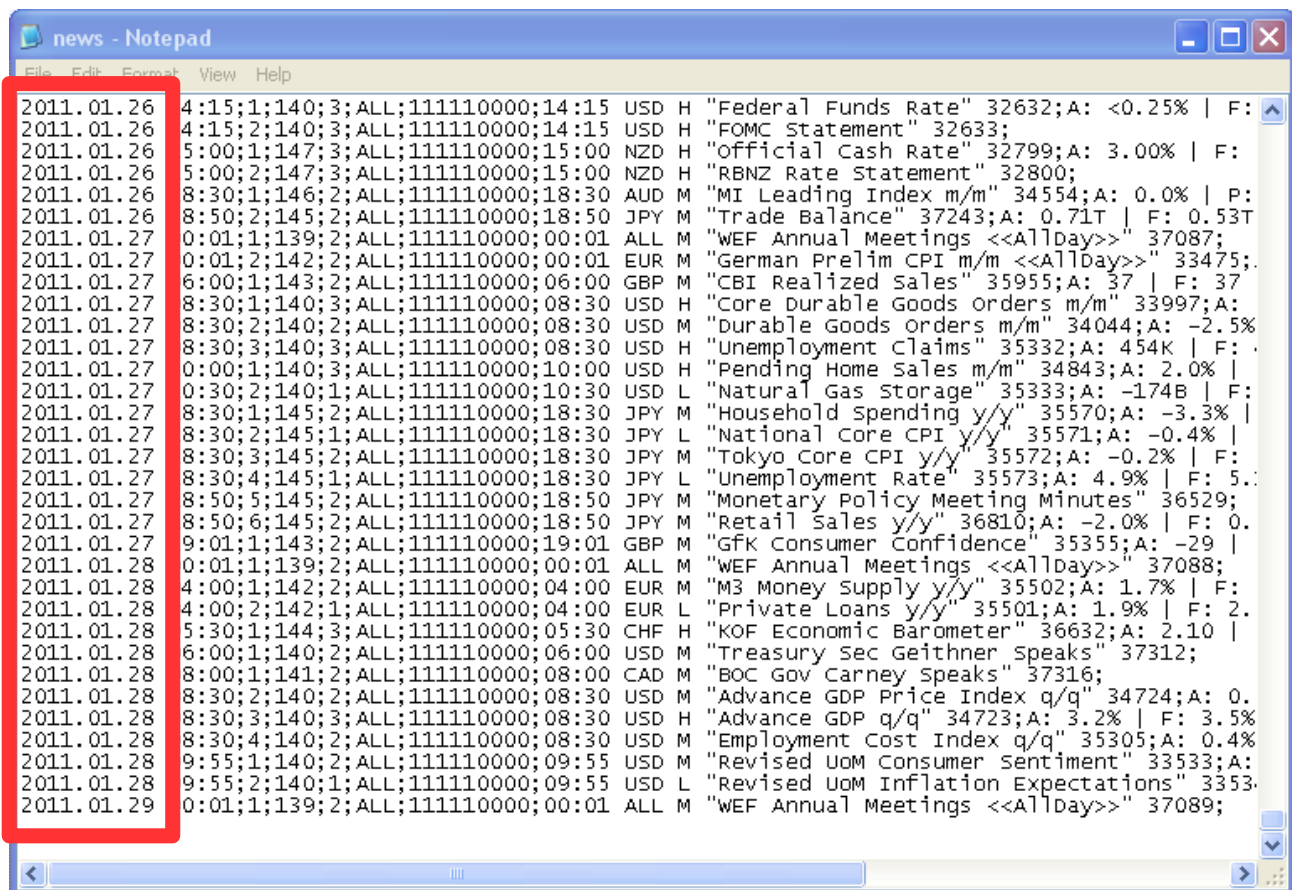
If you did everything as explained above, but you're not seeing these news events, then there's nothing further that I can do to help you. There is a problem with your computer, your internet connection, Windows version, other conflicting software (e.g. firewalls), or Forex Factory. You would need to get your local PC vendor to troubleshoot.

Press Alt-F4 to exit FFcal.EXE

Then you need to open My Computer/Windows Explorer, or some other file manager, and go to your ....\<MT4>\experts\files folder. There should be a file called **news.csv** there:



Right click, open with Notepad, and then press CTRL-END to get to the end of the file. You should see news events dated between 23-29 Jan 2011, like this:



Now go to MT4, and attach the **Recent News** indicator to any chart (preferably shortish timeframe like M15 or M30).

Set the parameters as follows:

```

ParameterFile           = NONE
NewsInputFile           = news.csv
SourceTimeIsGMTplus     = -5
MT4TimeIsGMTplus        = 0
LocalTimeIsGMTplus      = 0
FromDate                = 2006.01.01 00:00:00
ThruDate                = 2019.12.31 23:59:59
VertSpacingPips         = 5
ClearanceFactor         = 1
SymbolSize              = 1
TimeFrames              = M1,M5,M15,M30,H1,H4,D1,W1,MN
PlotTheseImpacts        = High=Red,Medium=Orange,Low=Yellow
PlotTheseCurrencies     = ALL=139,USD=140,CAD=141,EUR=142,
GBP=143,CHF=144,JPY=145,AUD=146,NZD=147,CNY=148
RelevantCcyChartsOnly   = false
ShowUpcomingXEvents     = 12
EventScreenCorner        = 1
EventFont               = Comic Sans MS
EventFontSize           = 12
RefreshEveryXMinutes    = 1

```

```
AlertXminsBeforeNews    = -1
EmailAlertSubject       =
OutputFile              =
Delimiter               = ,
EncloseInQuotes         = true
Date_Source_MT4_Local   = M
Mask_SerialNo           =
Mask_DateTime           = Y/M/D H:I
Mask_Currency           = T3
Mask_Descr              = T65
Mask_Impact             = T6
Mask_Actual             = NTRB,-6.1
Mask_Forecast           = NTRB,-6.1
Mask_Previous           = NTRB,-6.1
Mask_RevisedFrom        = NTRB,-6.1
```

Now you should see news 'dots' for all events between 23-29 Jan 2011.

You might need to adjust the time parameters (highlighted in the red box) to suit your time zone. This is explained in Appendix 1 of the instructions document.