

THV Dash Board v1.5.1

THV Dash Board v1.5.1

Pair	Template	20DR	TDR	SP	Bid	Ask	S	F	X	C	C	A	T	S	F	X	C	C	A	T	S	F	X	C	C	A	T	S	F	X	C	C	A	T	
							T	T	T	D	L	X	D	T	T	T	D	L	X	D	T	T	T	D	L	X	D	T	T	T	D	L	X	D	
EURCHF	THVDB_M5	130	102	5	1.2582	1.2587	M1>							M5>							M15>													NA>	
EURGBP	THVDB_M5	77	60	5	0.85	0.8505	M1>							M5>							M15>													NA>	
EURJPY	THVDB_M5	122	116	5	108.75	108.8	M1>							M5>							M15>													NA>	
EURUSD	THVDB_M5	158	95	3	1.3109	1.3112	M1>							M5>							M15>													NA>	
GBPCHF	THVDB_M5	172	200	9	1.4798	1.4807	M1>							M5>							M15>													NA>	
GBPJPY	THVDB_M5	129	130	7	127.9	127.97	M1>							M5>							M15>													NA>	
GBPUSD	THVDB_M5	142	62	5	1.5418	1.5423	M1>							M5>							M15>													NA>	
USDCHF	THVDB_M5	111	167	4	0.9597	0.9601	M1>							M5>							M15>													NA>	
USDJPY	THVDB_M5	74	71	4	82.95	82.99	M1>							M5>							M15>													NA>	

All example screen shots were taken with the Dash Board running under Windows 7, so yours may look different under XP.

The THV Dash Board is a standalone piece of software that reads data from a file that was created by an MT4 indicator that was placed on 1 to 12 charts. If you have more than 12 charts you can run more than one copy of the Dash Board. The DB will monitor any combination of up to 4 different time periods for any one Pair and each pair can have any combination of alerts in those time periods. The following are what can be monitored for each Pair in any of these time periods NA, M1, M5, M15, M30, H1, H4, and D1. Slow Trix, Fast Trix, Trix Cross, Cloud, Coral, ADX, Trends(1-6) and pip 20 day and daily range..

If you want to use less than 4 time periods you would select NA for that period to save on CPU usage. I will get into more of that later on when we talk about the THV indicator that collects all the information. The DB reads a file created by the THV Indicator with all the needed information it needs to determine if there is an alert. This alert is then sent back to the THV Indicator that will draw an arrow on the chart, sound an alert, create a pop up alert window, send an email, or take a screen shot. The DB only shows the alerts you have chosen when setting up the THV Indicator.

Explanation of some of the Buttons and usage.

Pair = These are the Pairs that the THV Indicator has been placed on, you must enter these in manually.

Clock = If red you are out of your trade window, If green you are within trade window.

Template = This is the template you have listed in the indicator entry under "Template", limit the name to a maximum of 8 characters to keep it within the window in the Dash Board. Also if you have selected to use the TrendLineBuy or SellAlert this window will show when that alert has been triggered.

20DR = 20 day pip range (Can be used to block an alert if today's Range has already exceeded a % of the 20 day Range)

TDR = Today pip range Range (Can be used to block an alert if today's Range has already exceeded a % of the 20 day Range) If this is white it has not been selected in the indicator.

SP = Spread in pips

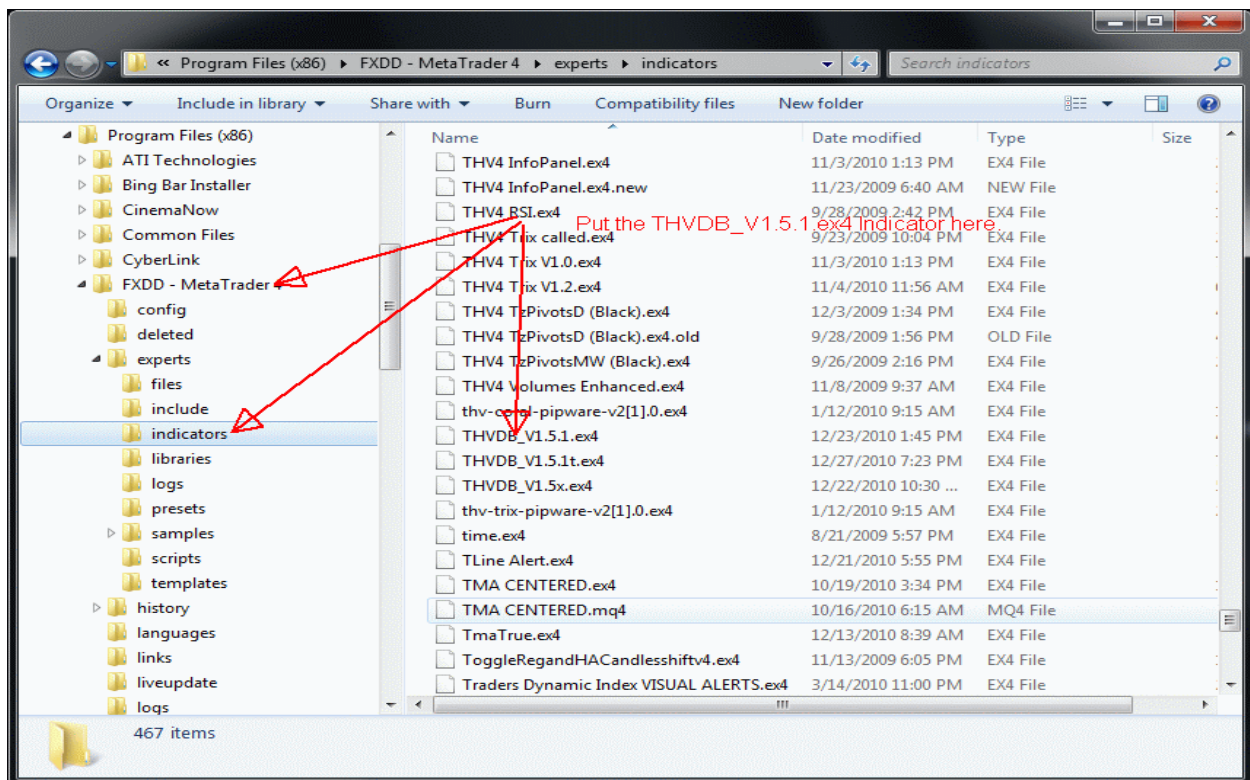
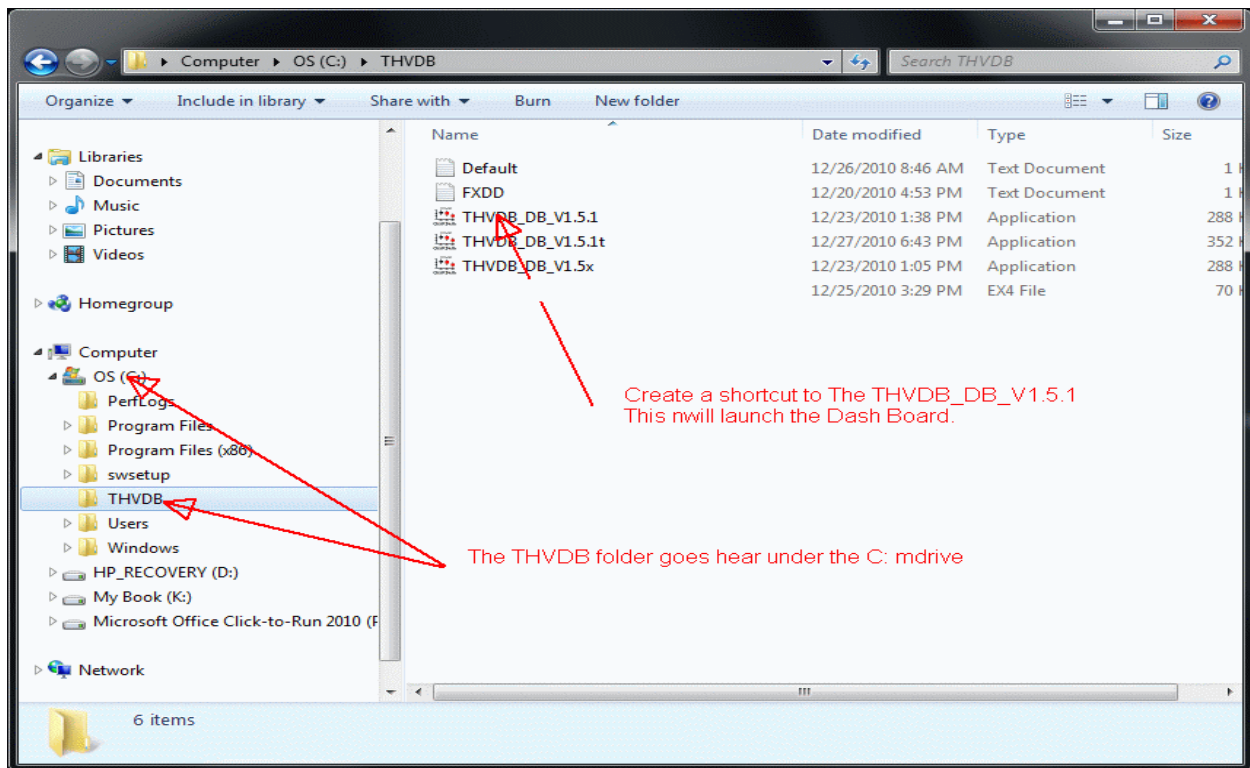
Bid = Bid

Ask = Ask

First Time Period (only shows what has been selected in the THV Indicator)
Second Time Period (only shows what has been selected in the THV Indicator)
Third Time Period (only shows what has been selected in the THV Indicator)
Fourth Time Period (only shows what has been selected in the THV Indicator)
Exit = Click to exit program
Start/Stop = Click to start and stop the collection of data to the DB, does not stop the indicator from collecting data.
ClrAll = Clears everything and restarts the program.
File Pull Down Selection = click to preload Pairs and configuration settings that you have saved.
File Name to Save configuration under
Config/Save = Saves the present configuration with the name in the File Name Box
Path Box = This tells the DB where to find the files created by the indicator (must end with a "\\")
Stay on Top = Check this to make the DB always stay on top

Installation

Copy the THVDB folder to the root of the "C" drive. The THVDB_DB_V1.5.1.exe (located in the THVDB folder) will launch the Dash Board so make a short cut to it if you like on your desk top or program files folder. I have not created an installation program for this program, I have found it to run on all the different PCs I have tried it on, if you have problems you are on your own. The configuration files are also located here and can be viewed with Note Pad. Place the THVDB_V1.5.1.ex4 file in the indicators folder of your MT platform. It is important that the Version number of the indicator and the Dash Board programs are the same.



Set Up and Configuration

Start MT4 and open a chart, the indicator is not chart time frame dependent, so you can place it on any chart time frame you like, be sure though to only put it on one chart of each PAIR. Just remember, the more indicators you have on your chart the more CPU intensive it will be. The THVDB_V1.5.1.exe4 indicator does not require any indicators to be on the chart, it does require the following indicators to be in your indicator folder though.

THV T3 Trix, Ichimoku, THV Coral T@H, THVDB_V1.5

Attach the THVDB_V1.5.1.exe4 indicator to the chart, for now just leave the choices as they are, these choices should match what is shown in the picture of the Dash Board at the beginning of this PDF. Once the indicator is attached and running there should be some information in the top left corner of the chart. It tells you the last time the data file was created, the template you have entered in the indicator setup, the Buy and Sell alert settings if you are using them and if you are within your trade time. When you want to save different indicator settings a nice way to do it is by saving it as a template. By entering this template name in the indicator it will show up in the Dash Board under Template. This entry has no effect on the program and is only used as a reference. If you save it as a template do not save the Buy and Sell alert lines, delete them before saving and create new ones for each PAIR if used.

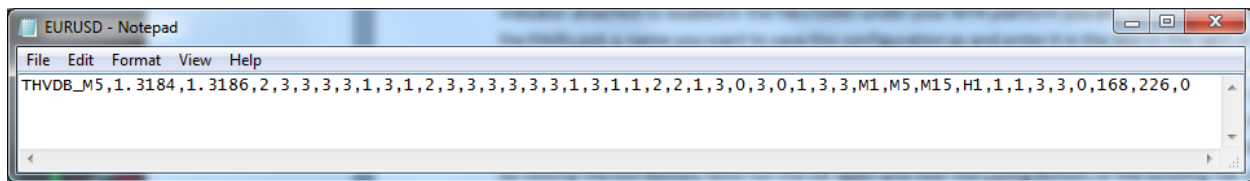


If you go to your files folder under your MT4 platform you should start seeing something similar to the next picture. If you have only attached the indicator to one chart, you should see just that PAIR listed. If you set this up when the Market is closed you will only get the first update of the file. When the Market is open it will update every 30 seconds, unless of course the Market is quiet and there are no ticks.

deleted				
experts				
files				
include				
indicators				
libraries				
logs				
presets				
samples				
scripts				
templates				
history				

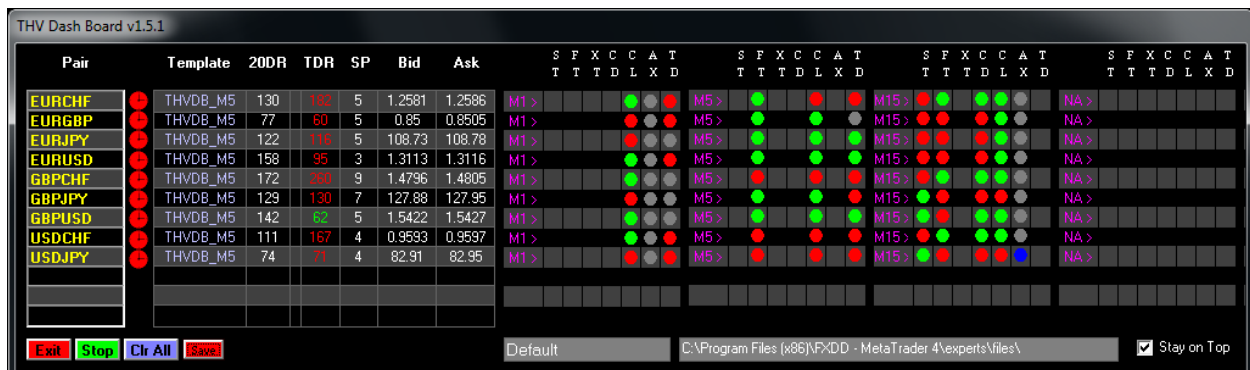
EURCHF	12/23/2010 1:59 PM	Text Document	1 KB
EURGBP	12/23/2010 1:59 PM	Text Document	1 KB
EURJPY	12/23/2010 1:59 PM	Text Document	1 KB
EURUSD	12/23/2010 1:59 PM	Text Document	1 KB
GBPCHE	12/23/2010 1:59 PM	Text Document	1 KB
GBPJPY	12/23/2010 1:59 PM	Text Document	1 KB
GBPUSD	12/23/2010 1:59 PM	Text Document	1 KB
USDCHF	12/23/2010 1:59 PM	Text Document	1 KB
USDJPY	12/23/2010 1:59 PM	Text Document	1 KB

These files are just text files and if you open one with Note Pad it would look something like this.



So this tells us the indicator is collecting data and posting it to a text file named to match the PAIR of the chart the indicator has been placed on. Remember, this file name without the extension must match what you enter into the Dash Board under “Pair”.

Next we will need to configure the Dash Board, first we need to tell it where to find these text files the indicator has created. Run the Dash Board and click on the Config Button, after you do this it will change to a Save Button. Type in the PAIRS you want to use, these must match the list of files you have the indicator attached to located in the files folder under your MT4 platform you are running. After filling in the PAIRS pick a name you want to save this configuration as and enter it in the box to the right of the File Pull Down Selection Box, for now you could just use Default if you like. You must also type the Path to your MT4 files folder exactly as it is or the program will not work, be sure it ends with a \. The one shown is Windows 7 with the FXDD MT4 Path. If you want the Dash Board to always stay on top of other open Windows check the Stay on Top box, finish by clicking the Save Button. Now click the “Clr All” Button and the program will restart. When it restarts you should see a scroll box with the name of the file you just saved your configuration under. If you don’t see your config file listed, use the scroll bars on the right side of the window to find it. Once shown in the window you can click it and your configuration should come back up and you should see the Pairs you typed in before.



If you click the Start/Stop Button, within 30 seconds you should have data similar to the above screen depending on how many charts you attached the indicator to (you must have already set up the indicator on one or more charts and the data files must be in the files folder). Some of the alerts may have just a Gray Button, unlike the Trix which can be only Green or Red. Only those alerts that have been chosen in the MT4 indicator will show a Button on the DB, they will be Red or Green for Short or Long. The ADX will be Blue when it has issued an alert, otherwise it will be Gray. The XT, CD, CL, AX, and TD could possibly be Gray if they have no direction. The TDR value will be Red or Green if it has been selected in the indicator for use or will be White if not selected. The RED or GREEN time clock next to

the PAIR tells you if you are in your TRADE WINDOW as set in the indicator, it will be Red if you are outside your Trade Period or Green if you are within your Trade Period. No alerts are issued outside the Trade Period but the DB will still show what the Alerts are doing.

Indicator THVDB_V1.5.1ex4

The indicator must be placed in the indicators folder under the experts folder of your MT4 folder. This indicator is the work horse for the Dash Board and does all the collecting of the information and also sends out the alerts when one is issued by the Dash Board. It creates a file under the files folder with all this information that the DB then reads and uses to create an alert that is sent back to the indicator. The indicator is easy to set up just like any other indicator. The indicator is independent of any time frame of the chart it is placed on, just remember the indicator consumes cpu time so if you also have a lot of other indicators on the same chart the cpu may run slow. Also, don't put the indicator on more than one chart of the same PAIR. The indicator setup is broken down into 5 sections, the first section is some basic settings.

If you use the Trend Alerts they must be on the same chart that has the THVDB_V1.5.1.ex4 indicator on for it to work properly. You create these Buy or Sell lines using the tools in MT4. You can use either the Trend line tool or the horizontal line tool. The only requirement is that you rename them to Buy (Break of resistance Line) and Sell (Break of support Line), only one of each. You rename them after you draw them by double clicking them and then right click the mouse on the line to edit its settings, You can change the style or color, but remember, they must be named Buy or Sell for the program to locate them on the chart and only one of each with these names. You can tell if you have done this correctly as the trigger levels for these Buy Sell alerts will be displayed in the top left corner of the chart.

Template = If you want the template name you are using to be displayed in the DB, enter it here, try to keep this name to a maximum of 8 characters. By using a template you can save your indicator settings so you don't have to reenter them each time. This entry has no effect on the program other than for your own personnel information as to what template you may be using. Don't save a template with the TrendLine alerts on it.

ShowArrows = This will display an arrow on the chart where the alert occurred.

AlarmOn = This enables the alarms, only one alarm will be given unless the alarm goes away and then comes back, in this case another alarm will be issued.

AlarmSoundOn = Turns the alarm alert sound on

VoiceAlarm = Use this if you have created voice alarm wave files for your different pairs. The name of these files must be as follows and they must be in the sounds folder. PAIRBuyalert.wav or PAIRSellalert.wav. The PAIR must be spelled exactly as it appears in the files folder. If you select this Voice Alert Mode the popup alert window will be disabled and you will only get the voice alert.

SendEmail = Use this to send an email alert to the address that has been set up in your MT4 platform.

StartHour = This is the hour the indicator will start sending alerts if there are any. The DB will still show the alert condition even if it is outside the trade zone but just won't send an alert.

EndHour = The indicator will stop sending alerts after this time but the DB will still show the condition of the alerts.

AlarmScrnCapON = Will take a snap shot of the screen at the time of the alert and place it in the files folder.

DailyRange = If you want to use the Daily Range as a filter for your alerts set this to true.

RangePerCent = Set this as a whole number percentage without the % sign, if the Daily Range has already exceeded this percentage of the past average 20 day daily range the alert will not be given.

The next 4 sections are the same and only a few items will be touched on here. You can have up to 4 different time periods, NA,M1,M5,M30,H1,H4,D1. If you only want to use say 3 different time frames then enter a time frame in the first three periods and in the last one enter NA. The NA will turn off all the calculations for that period regardless if you have them selected or not. So if you want to use alerts in one of these 4 periods make sure you have a time frame entered and not "NA", as "NA" will turn them all off. This way you don't have to disable alerts in one of the periods separately but can just enter "NA" and they will all be disabled.

TRENDP1 thru TRENDP4 = You can have up to 6 trends selected by entering in the ma of each. If you only want 5 then enter a -1 in #6, if you only want 4 then enter -1 in #5 and #6. Also be sure to enter in the type of trend according to those listed.

The rest of the settings should speak for themselves.

Problems

No Data appears in Dash Board:

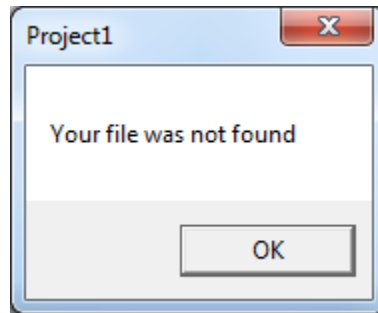
Check your Files folder and make sure the Indicator is creating these text files. If they are there make sure you have specified the correct path in the configuration set up. Also make sure the PAIRs listed in the DB are spelled exactly like the ones in the Files folder, do not put any extension such as .txt on these in the DB PAIR boxes.

I have more than 12 PAIRs:

You can run more than one DB at a time and have 12 pairs on each DB, they can even point to the same files folder, just list different pairs on the second DB. So you could have 24 Pair files in the files folder (all different) and be running two Dash Boards and have 12 different pairs on each Dash Board. Listing the same pair on two different Dash Boards work, but the alerts will be the same as only one data file with that name can be created. If you have the same pair on two charts and also have the same indicator on both of these charts one will over write the other and the output will vary, so don't do it.

Don't list missing PAIRs in DB:

If the DB when scanning through the listed PAIRs comes across one that does not have a corresponding file it will stop the DB scan update at that point and a warning box will pop up. So don't put any PAIRs in the DB that don't have a matching file.



DB doesn't update on every tick:

The DB only updates every 30 seconds when there are ticks coming in. If there are no ticks for a period of time it will not update until the next tick, and this could be longer than 30 seconds. If you want to see how the DB works on a weekend you can, but it will only update once for each pair as the indicator is launched. After that since no ticks are coming in it will not update again. There are programs that create ticks that you could use if needed, one is called mt4_ticker.exe.

Examples

I have included an example to help you get started, you will find a template and the indicators in the zip file for it, it is shown on a M5 chart. The following picture shows how I set up the Buy and Sell triggers to be used along with the default settings the indicator comes with. This is how I would set it up just before my trade window opens so I am ready.



The next picture is of the same PAIR as above showing the alert arrows being present after all the alert requirements were met and the price passed through the Sell alert line. The THV alerts being used can be seen on one of the above Dash Board pictures. You can see I got three alerts, the first one after it broke through my support line and two more after that as the alert must have went away and returned to signal again. Look at the settings in the indicator to see the Mas being used. Remember you can also use the Trend Line MT4 tool rather than the Horizontal Line tool if you want a sloping trend line. Just remember, only 1 Buy Line and only 1 Sell Line on the chart that has the indicator on it. The indicator looks for these names only, so if you don't rename them the values will be zero and you will always have a TrendLineBuyAlert as price will always be greater than zero..



Disclaimer

The information provided in this User Guide is not intended for distribution to or for the use by any person or entity in any jurisdiction or country where such distribution or use would be contrary to law or regulation or which would be subject to any registration requirement within such jurisdiction or country.

The resale or repackaging of this software or manual is prohibited.

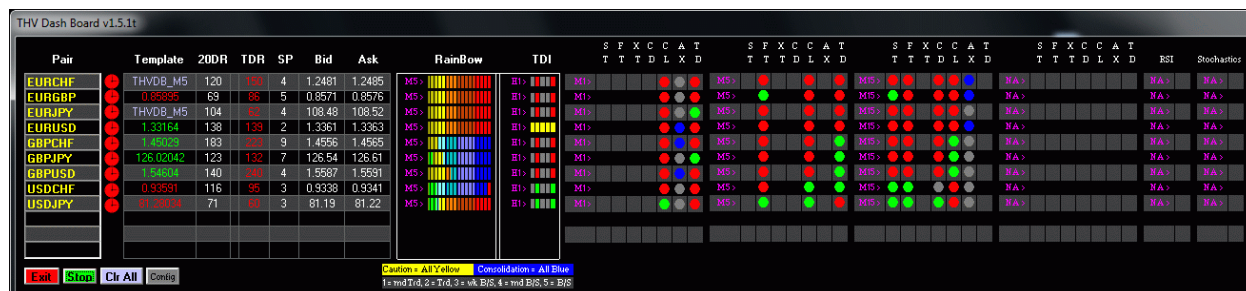
The ideas used to create this software have come from too many sources to create a comprehensive list but to learn more in depth usage of the alerts used please visit the COBRA THV Forum at Forex Factory.

The Dash Board is an on going project with the next version already in the works with more additions. Please let me know if the DB works for you and what settings you are using in the indicator.

My user name at Forex Factory is seller9

Good Luck

THV Dash Board v1.5.2



THVDB_DB_v1.5.2 is now available and has some additional information and alerts. Be sure to use the indicator THVDB_v1.5.2 with this new Dash Board. You will also need the additional following indicators in your indicators folder.

Traders_Dynamic_Index, and VarMA-v1[1].2, these are both in the zip folder.

The new indicator THVDB_v1.5.2 now draws the Buy and Sell Horizontal lines on the chart for you if you have them set to true in the settings. You can double click them to select them and place them where ever you want. If you want to do a Trend Line instead of the Horizontal Lines you will need to double click the Horizontal line to select it and then right click the line and select delete to remove it. Now using the MT4 Trend Line drawing tool you can draw your Trend Line just as you did in the previous version, just be sure to rename them to either Buy or Sell.

RSI and Stochastics alerts have also been added to this version. These are available in only one time frame instead of four like the other alerts.

A RainBow Bar Graph has also been added that uses 50 different moving averages to display 50 different bars. They range from 2 to 100 MA in steps of two. Also a TDI Bar Chart has been added that represents the seven different stages of the TDI indicator.

All Bars Yellow = Caution, All Bars Blue = Consolidation, 1st Bar = Medium Trend Up/Down, 2nd Bar = Trend Up/Down, 3rd Bar = Weak Buy/Sell, 4th Bar = Medium Buy/Sell, 5th Bar = Strong buy/sell. The Rainbow and the TDI do not issue any alerts at this time, but are just for informational purposes only. To save on CPU usage, you can set the refresh rate of the RainBow in the indicators setting under the RainBow Settings.

Here is an example chart showing the Buy and Sell lines drawn when the indicator is attached to a chart. Be sure to move them to a location of your choice.

