

**14:15**

MACD probably starts a Head And Shoulder Pattern

Chart Double Top

Ema 8	1.3648
Ema 21	1.3619
Sma 89	1.3575

**4h MACD Sys**

EUR/USD short: 1.3659

4 mini lots

**(a)** 2 ml sl:1.3689 (30)  
tp:1.3625 (34) [ema 21]

**(b)** 2 ml sl:1.3689 (30)  
tp:1.3581 (78) [sma 89]



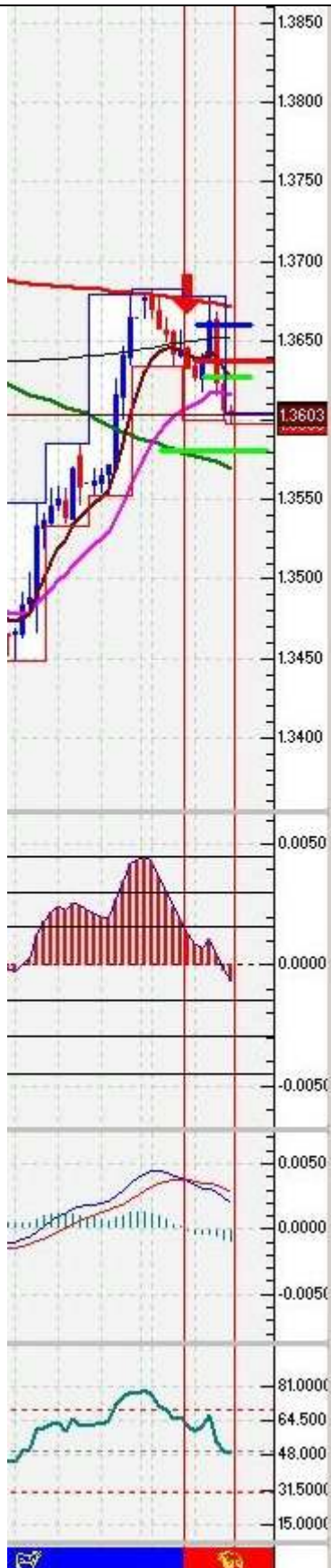
**16:13**

**(a) tp: + 34 Pips (2ml)**

**(b) sl modified +/- 0 Pips sl:1.3659 (2ml)**

**17:38**

**(b)** it looks as if the resistance round EMA21 would hold. Open trade at + 20 Pips. MACD shows downtrend slowing down



**22:21**

Downtrend continues after EMA21  
Resistance got broken. Open at +25 Pips right now.

I modify **sl** for

**(b)** sl 1.3637 ( + 22 Pips)

above a temporary Resistance Level

**15min:**



**(b)** maintaining tp slightly above EMA89