

A group of four people are seated around a table in a meeting. A teal rectangular overlay is positioned in the center of the image, containing the text '#homework', 'BYSTRA', and 'GOLD Perfect Entry'.

#homework

BYSTRA

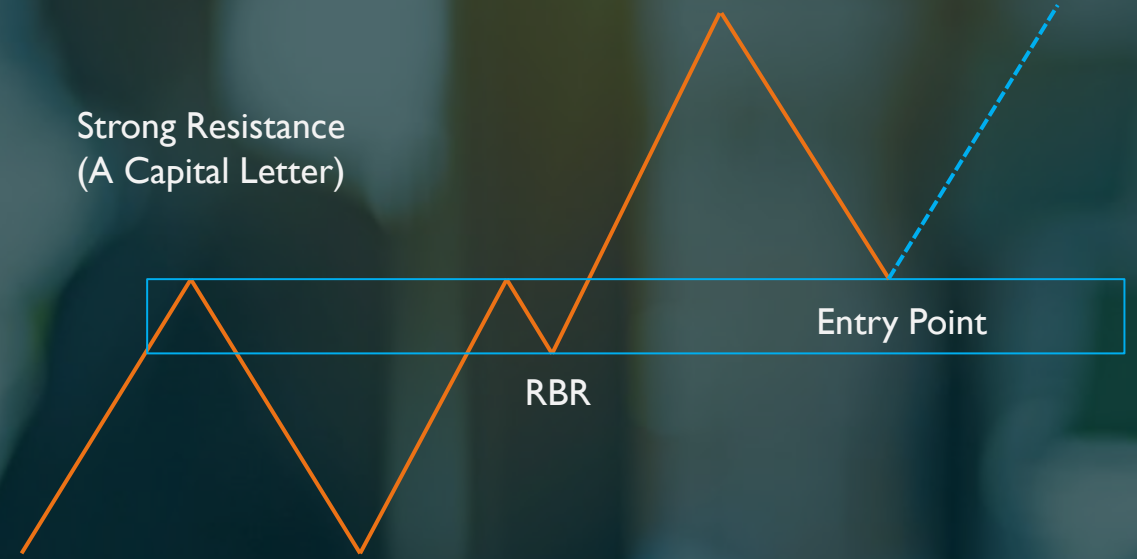
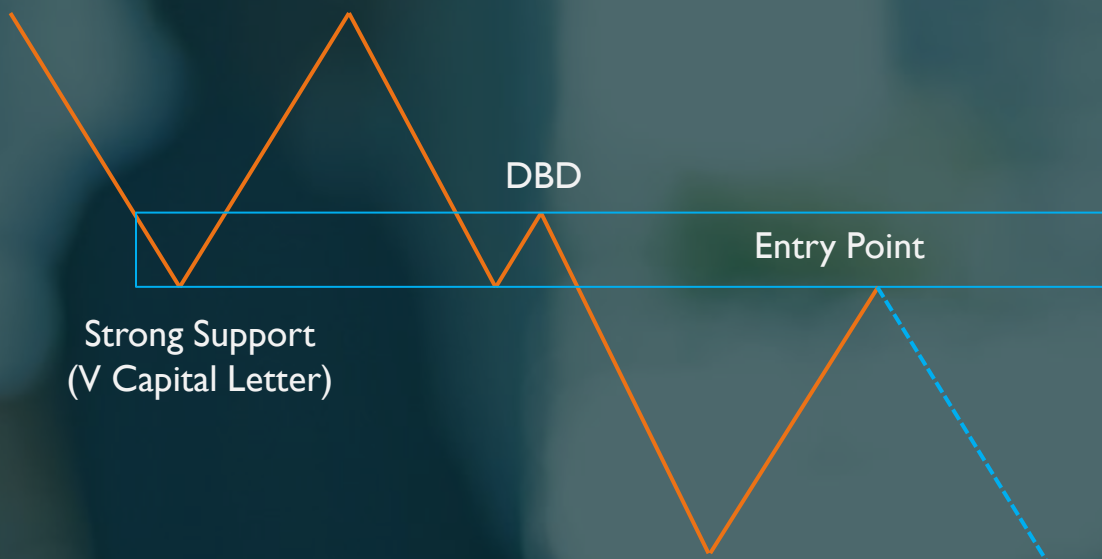
GOLD Perfect Entry

SNR CONTINUATION

Low Risk

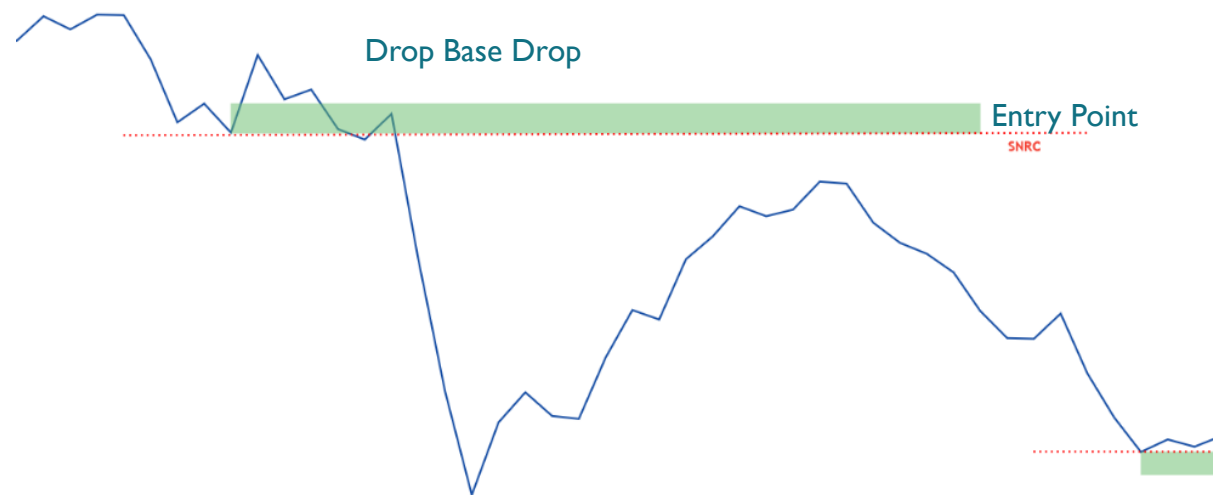
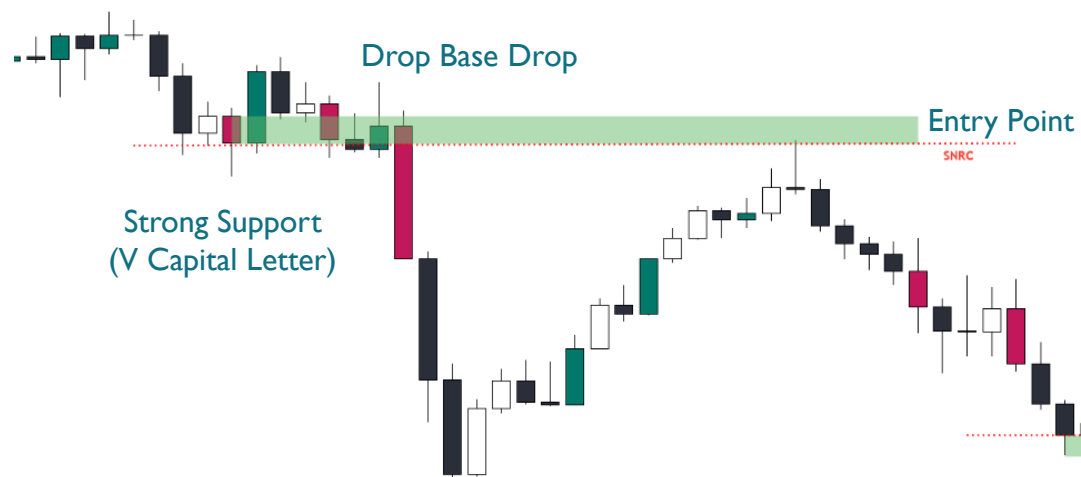
Setup Rule

1. After Reversal
2. Strong SNR (A/V Capital Letter)
3. RBR/DBD align with A/V Capital Letter



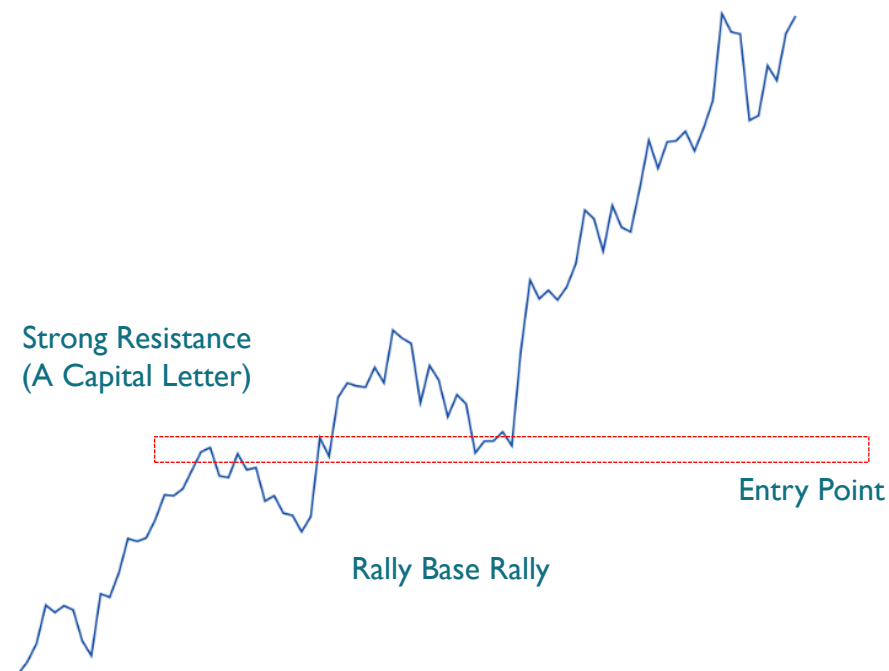
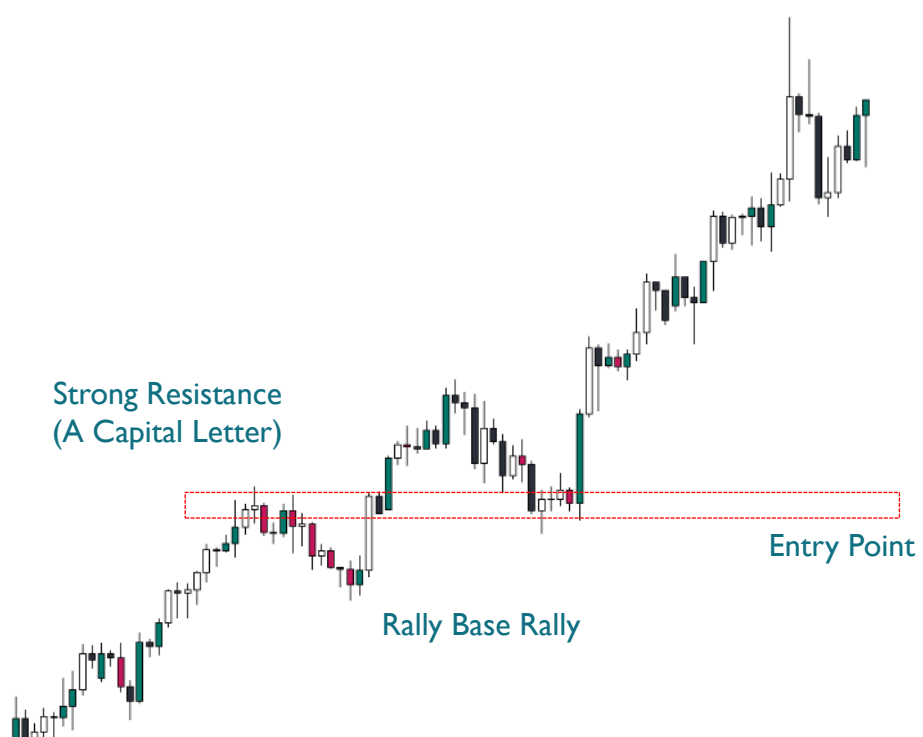
SNR CONTINUATION

Sell Setup



SNR CONTINUATION

Buy Setup



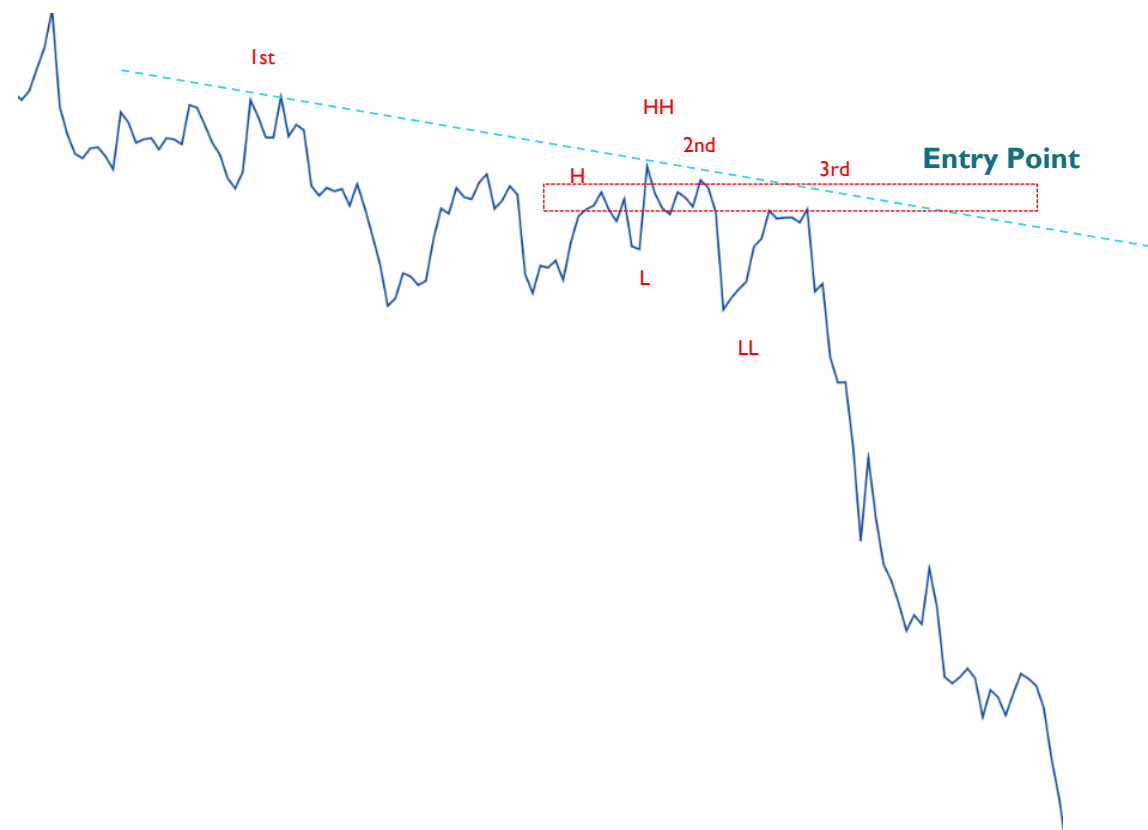
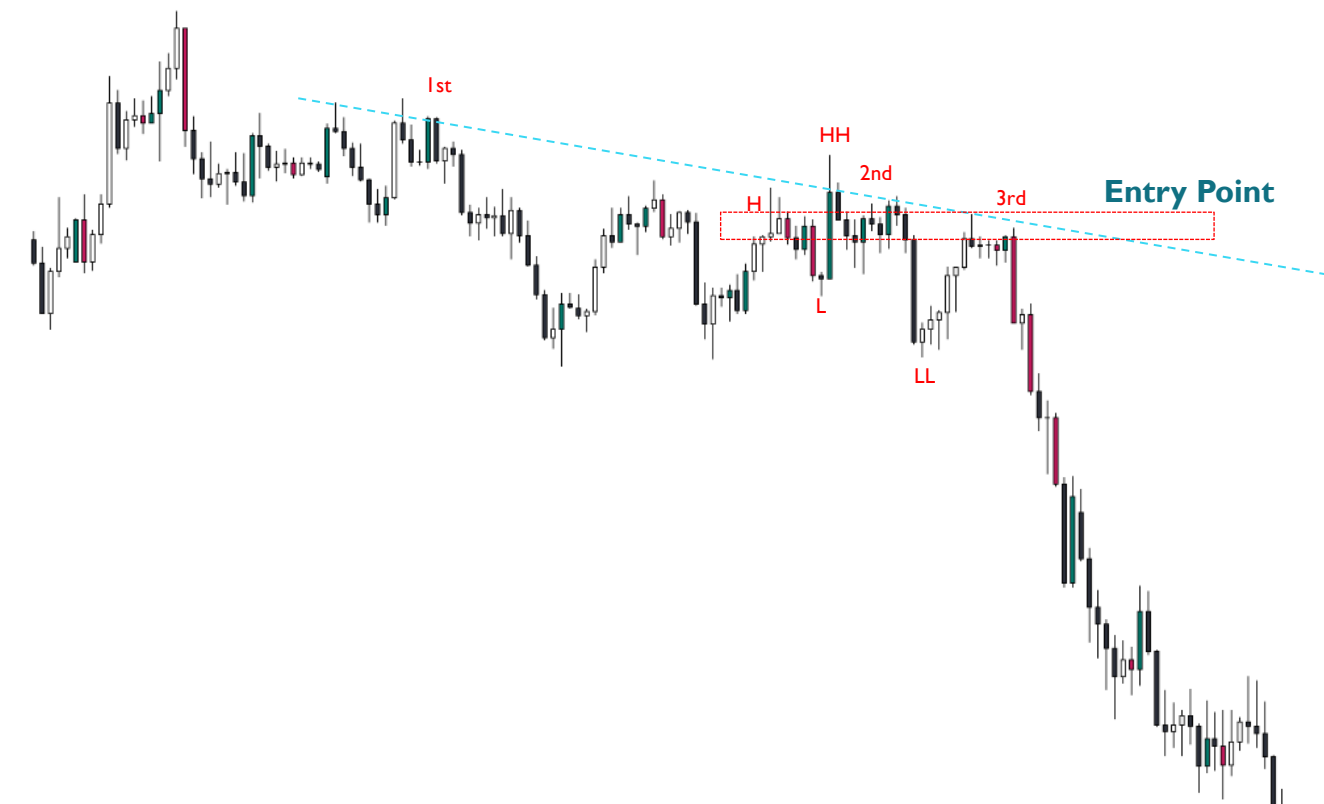
Low Risk

1. After Reversal
2. HH/LL touch TL at 2nd touch
3. Entry at 3rd touch TL

1. After Reversal
2. HH/LL touch TL at 2nd touch
3. Entry at 3rd touch TL

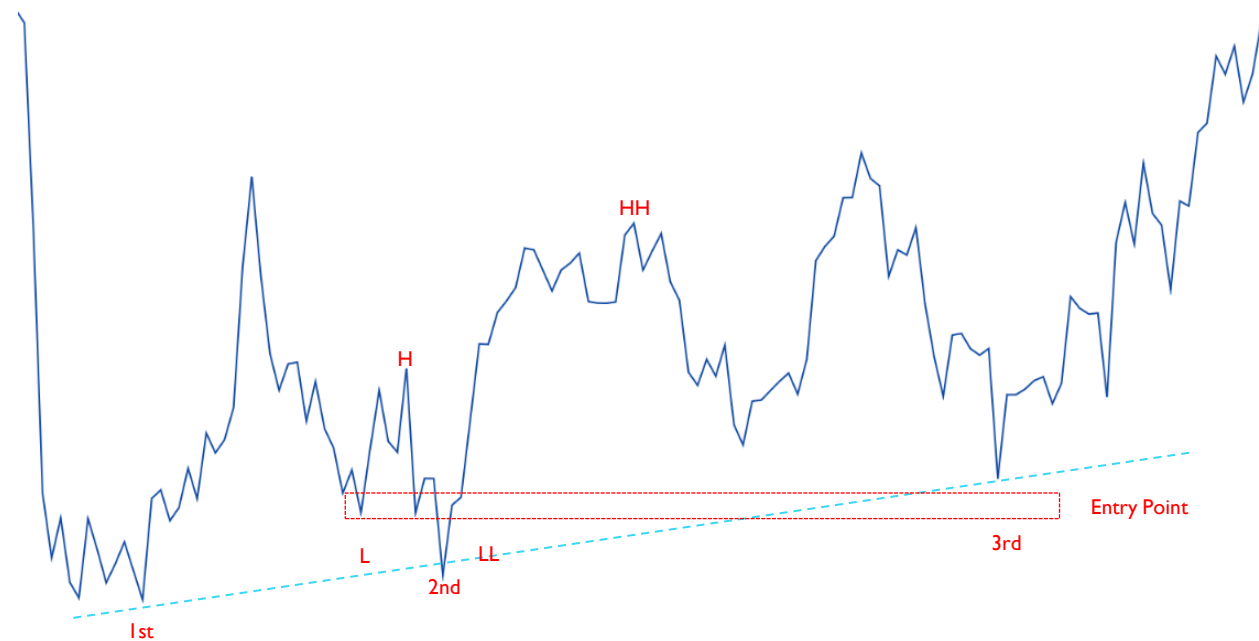
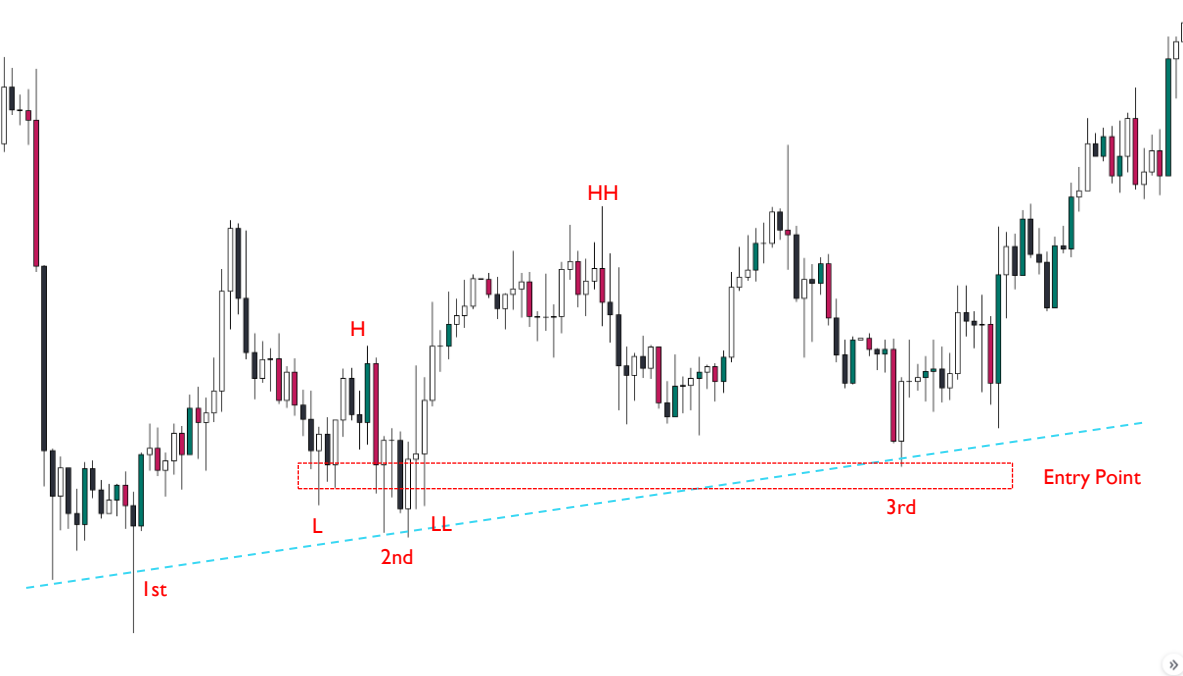
QM CONTINUATION

Sell Setup



QM CONTINUATION

Buy Setup

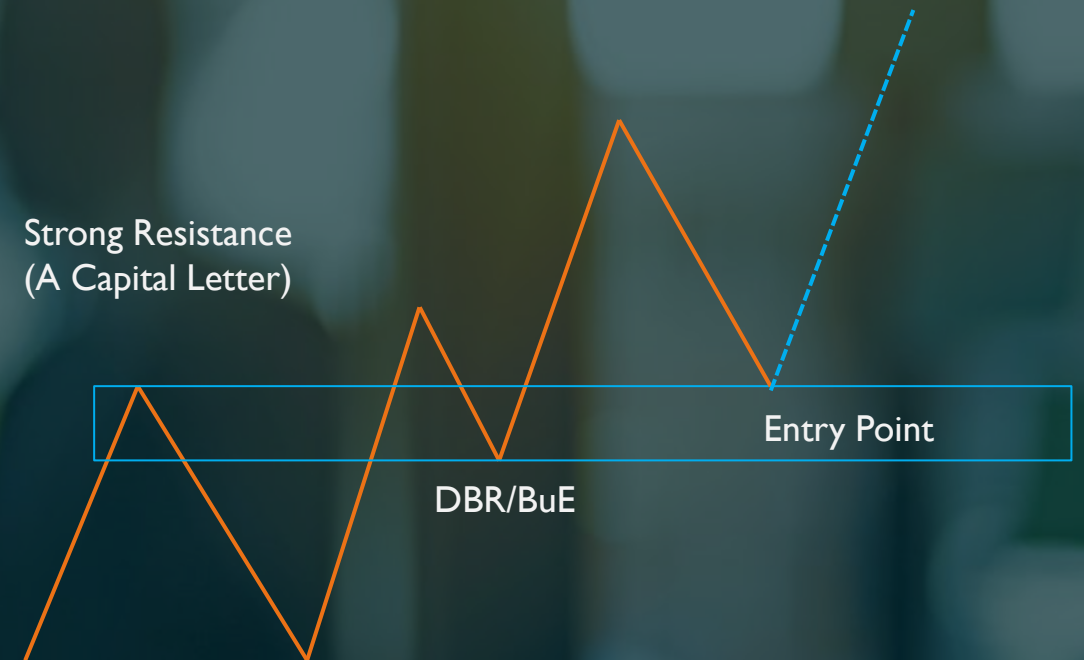
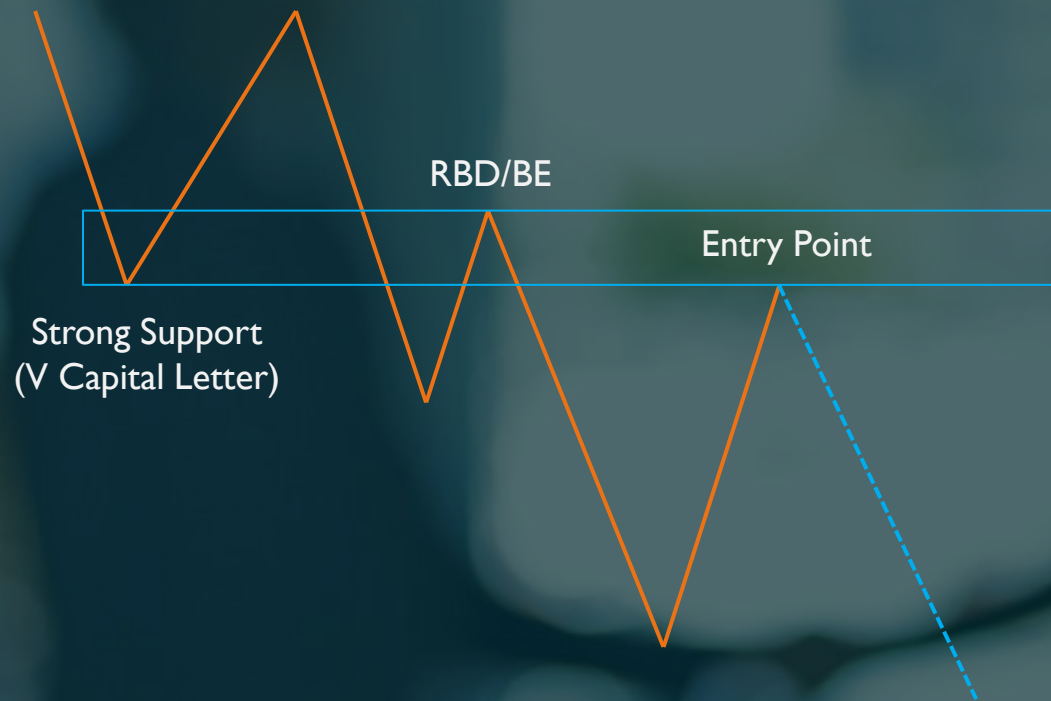


SNR CONTINUATION V2

Low Risk

Setup Rule

1. After Reversal
2. Strong SNR (A/V Capital Letter)
3. RBD/DBR align with A/V Capital Letter



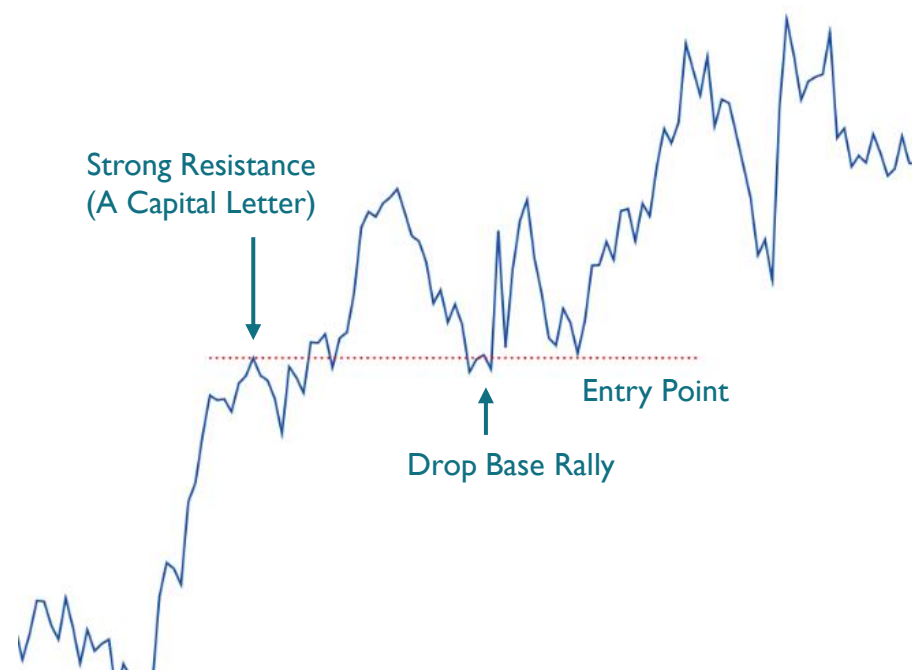
SNR CONTINUATION V2

Sell Setup



SNR CONTINUATION V2

Buy Setup

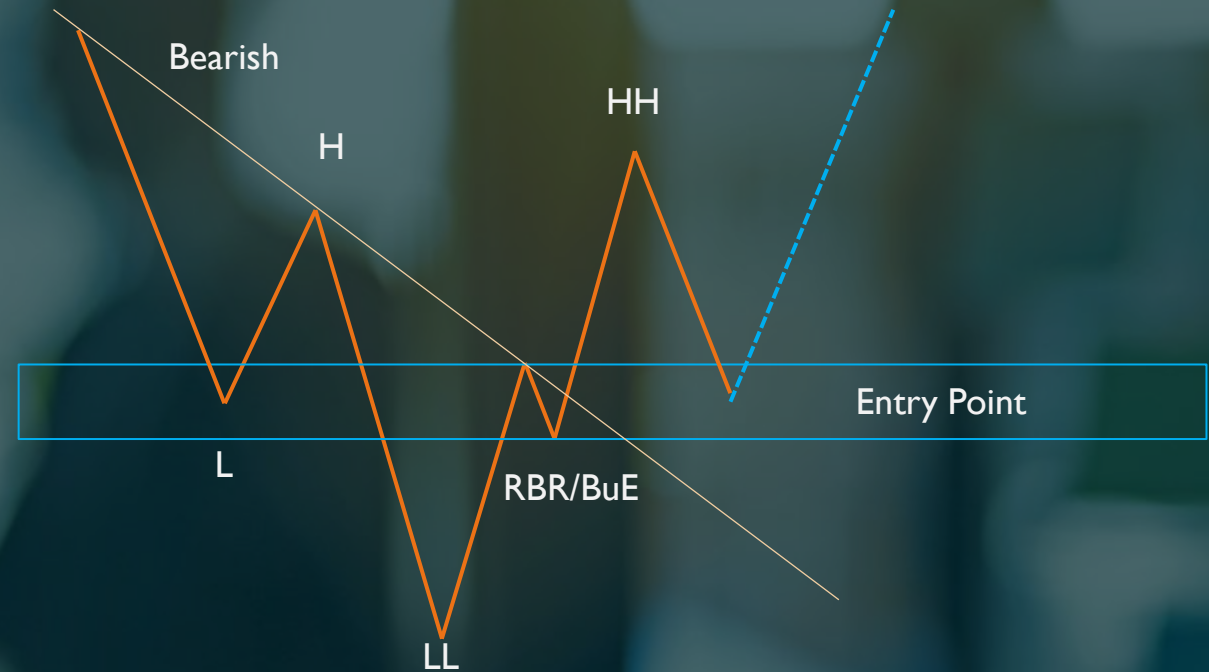
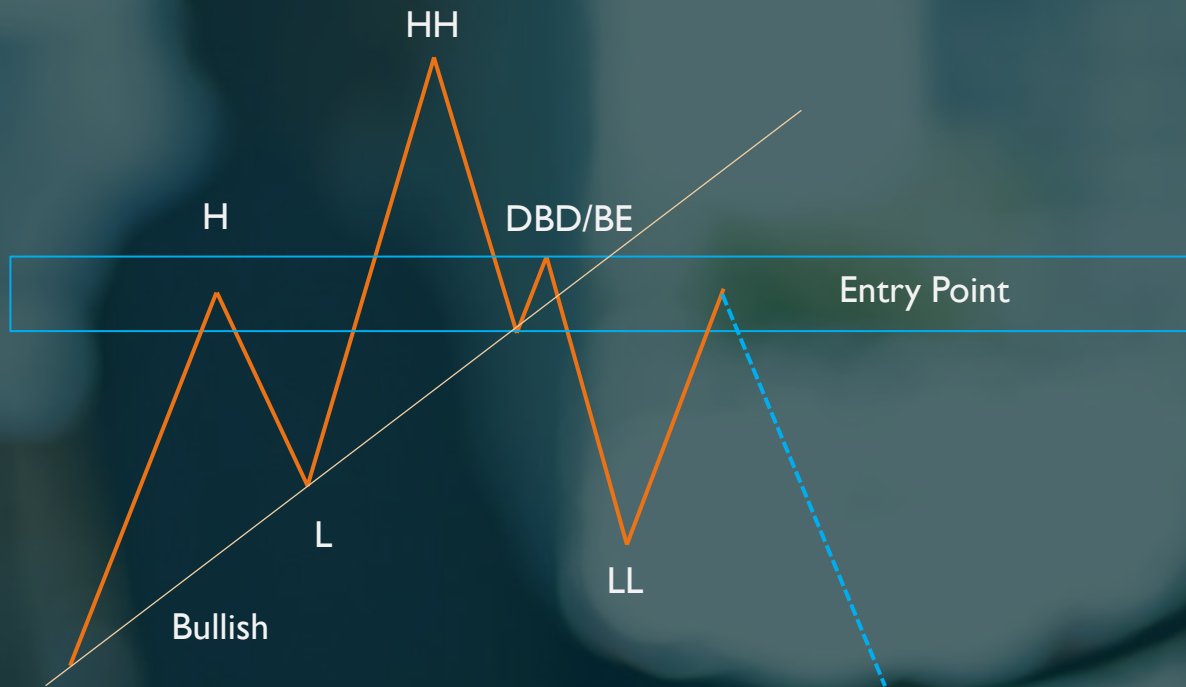


QM REVERSAL

High Risk

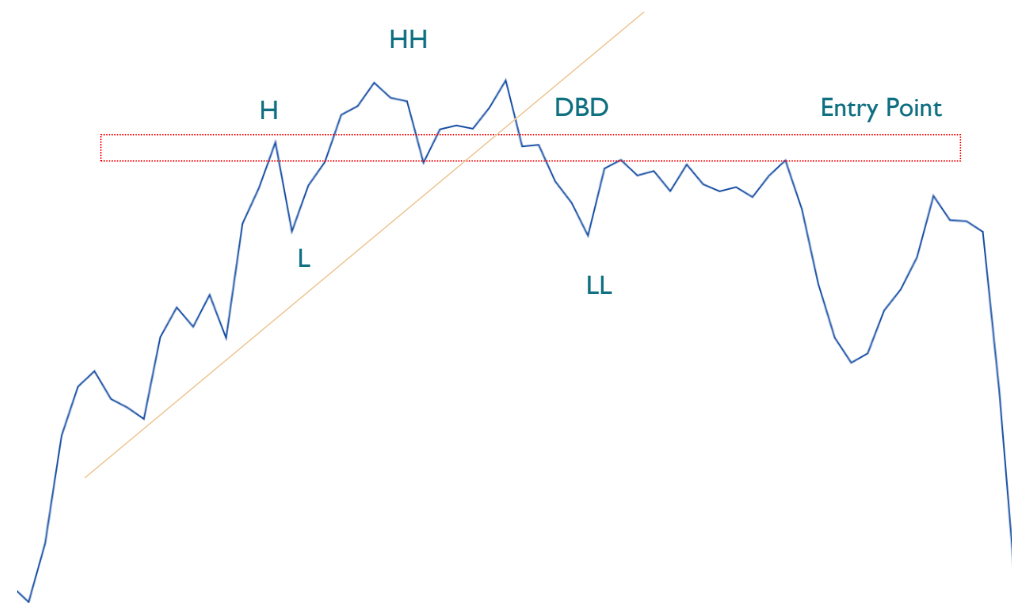
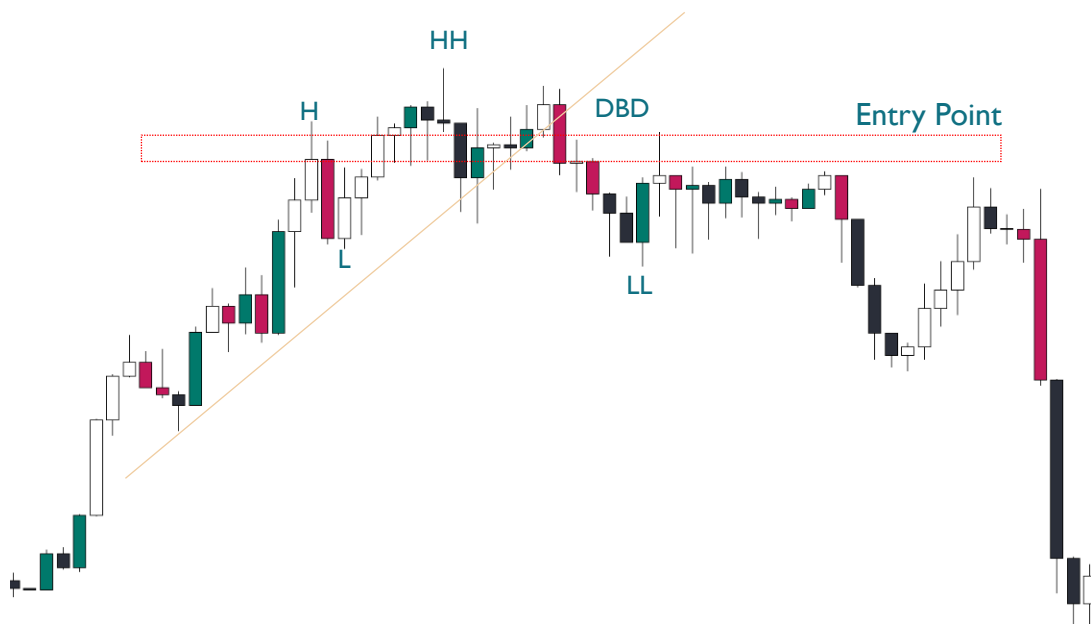
Setup Rule

1. End of Trend
2. Break Bullish/Bearish Trendline
3. Entry Point at RBR/DBD align with last High/Low
4. Best setup if BIG TF on Bullish/Bearish Engulfing



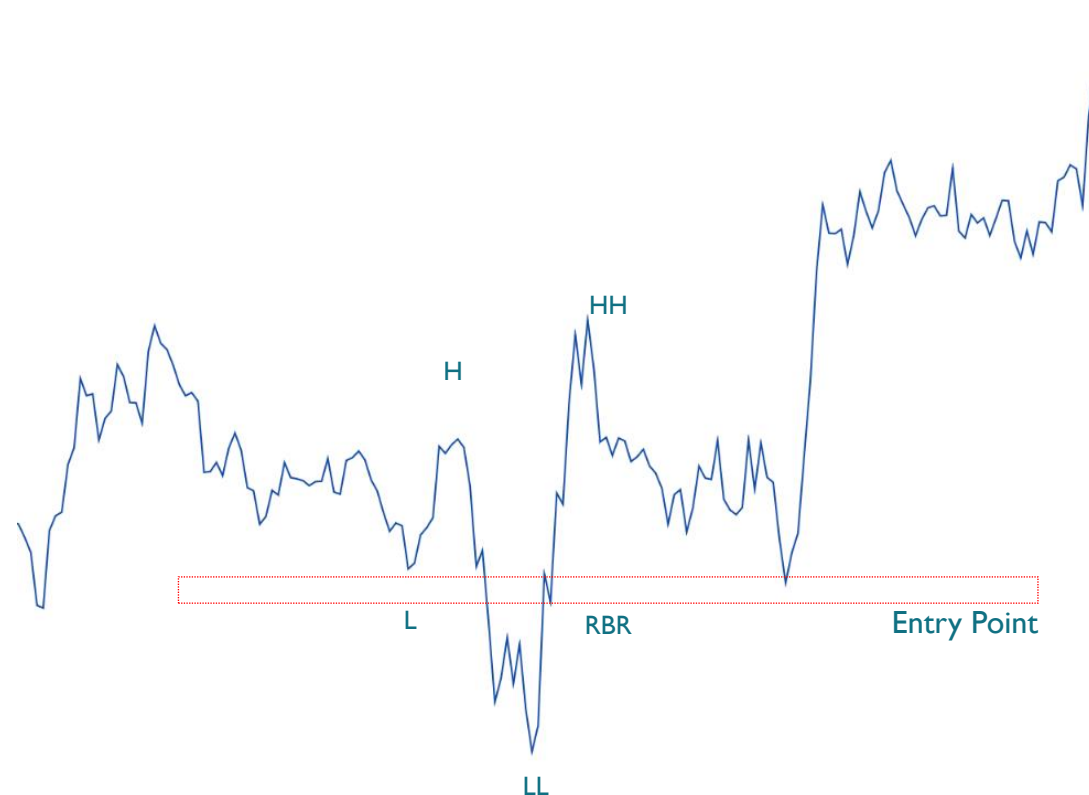
QM REVERSAL

Sell Setup



QM REVERSAL

Buy Setup



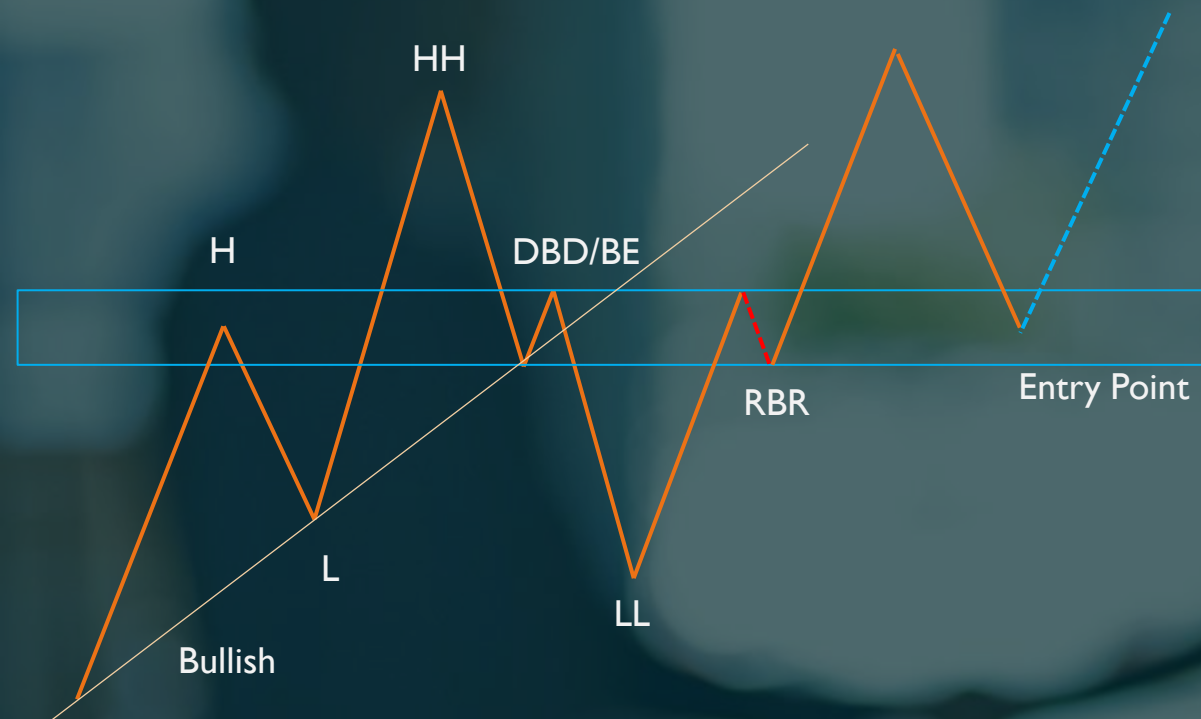
BULLISH ENGULFINGS ON BIG TF
Small TF QMR, RBR Align with L, CK2.
Full Margin Setup

QM FAILED / TAK CANTIK

High Risk

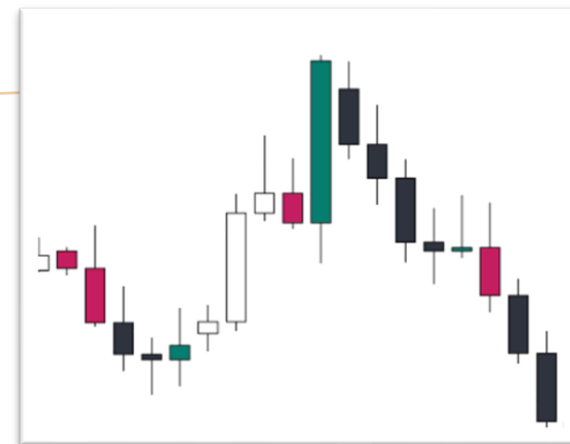
Setup Rule

1. End of Trend
2. Break Bullish/Bearish Trendline
3. Entry point at RBR/DBD align with previous entry point
4. Best setup if BIG TF on Bullish/Bearish Engulfing



QM FAILED / TAK CANTIK

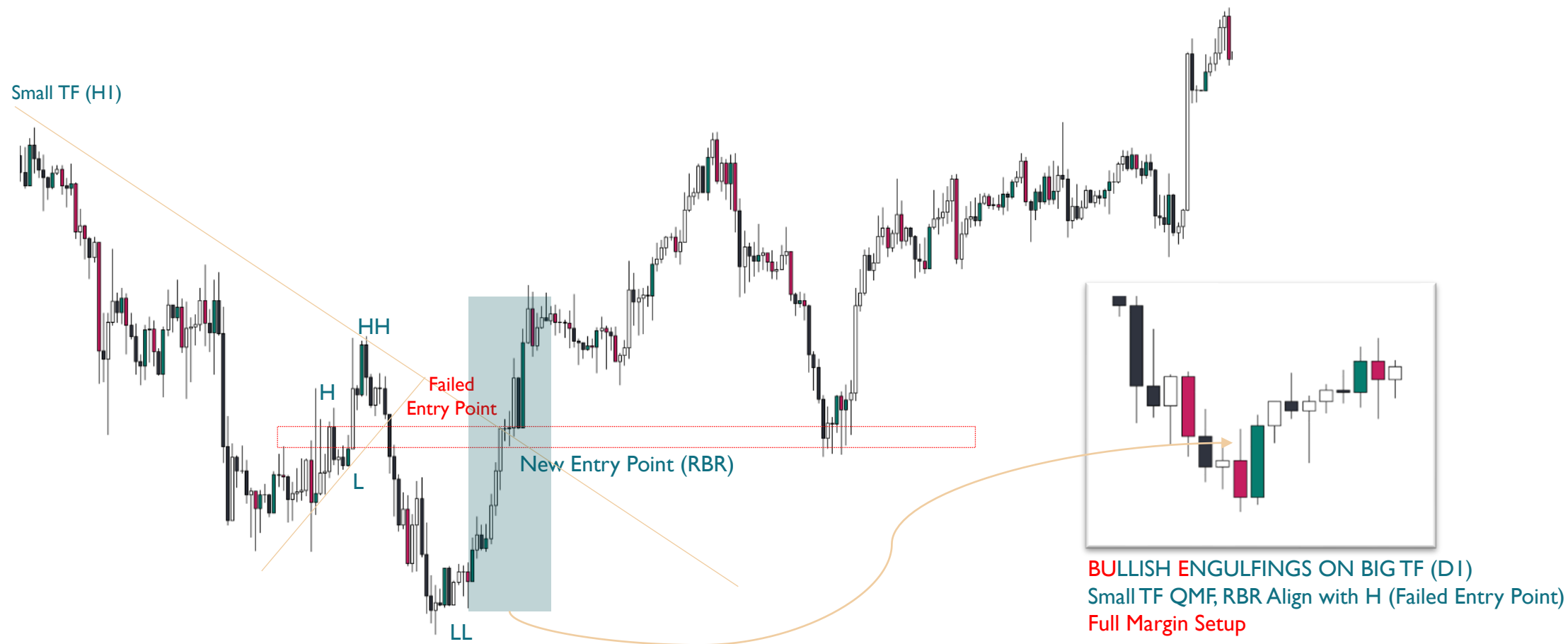
Sell Setup



BULLISH ENGULFINGS ON BIG TF (D1)
Small TF QMC (Failed Entry Point). Align with DBD
Full Margin Setup

QM FAILED / TAK CANTIK

Buy Setup

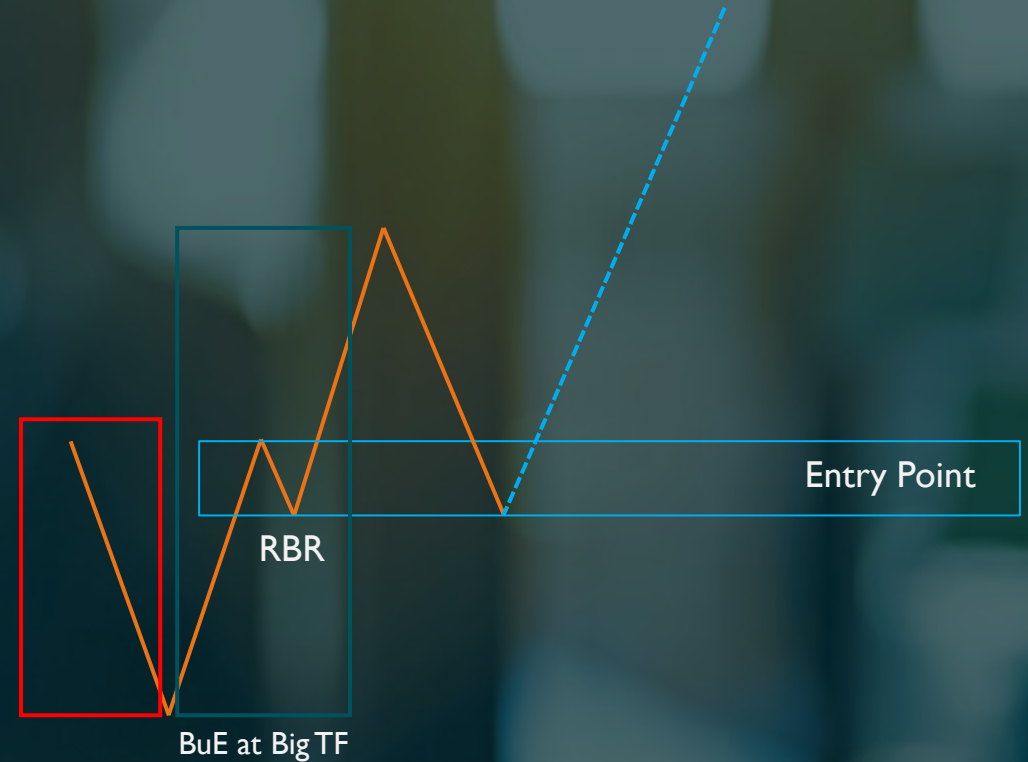
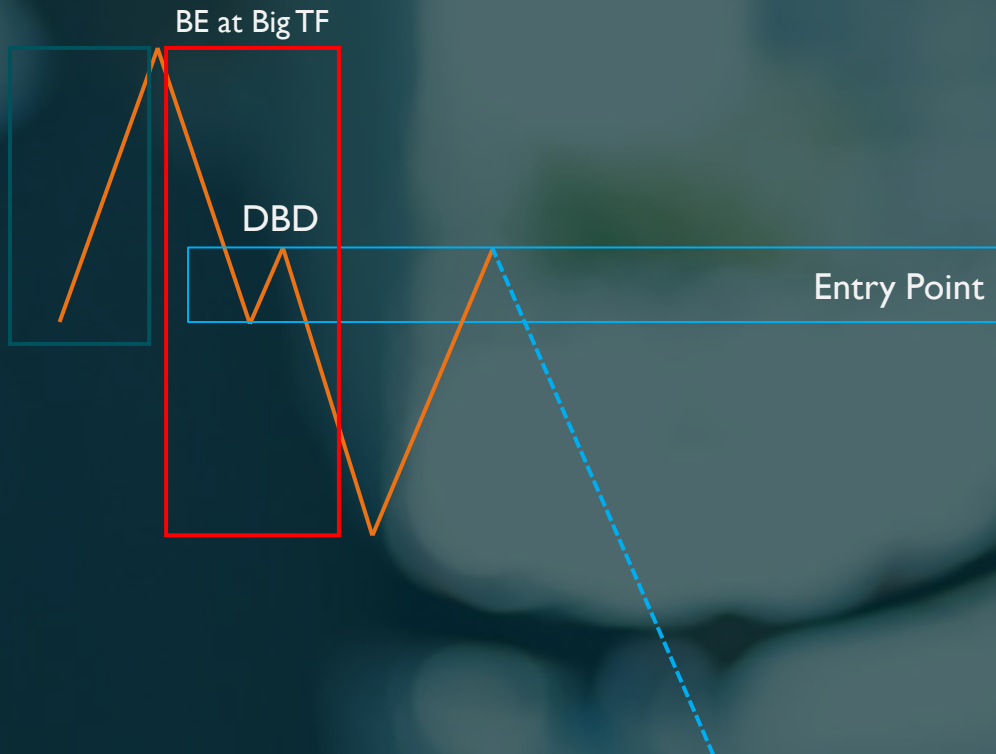


MANIPULATION

High Risk

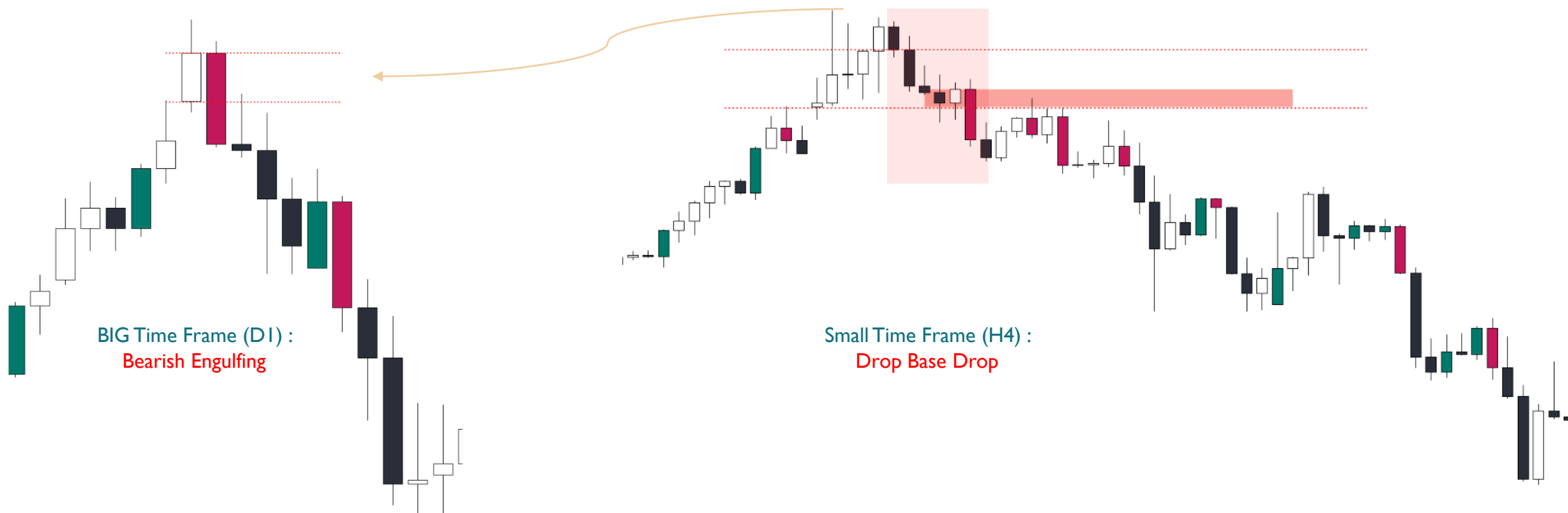
Setup Rule

1. After reversal. High Risk on Reversal
2. Bullish/Bearish Engulfing on BIG Time Frame
3. Entry point at RBR/DBD inside Engulf Candle



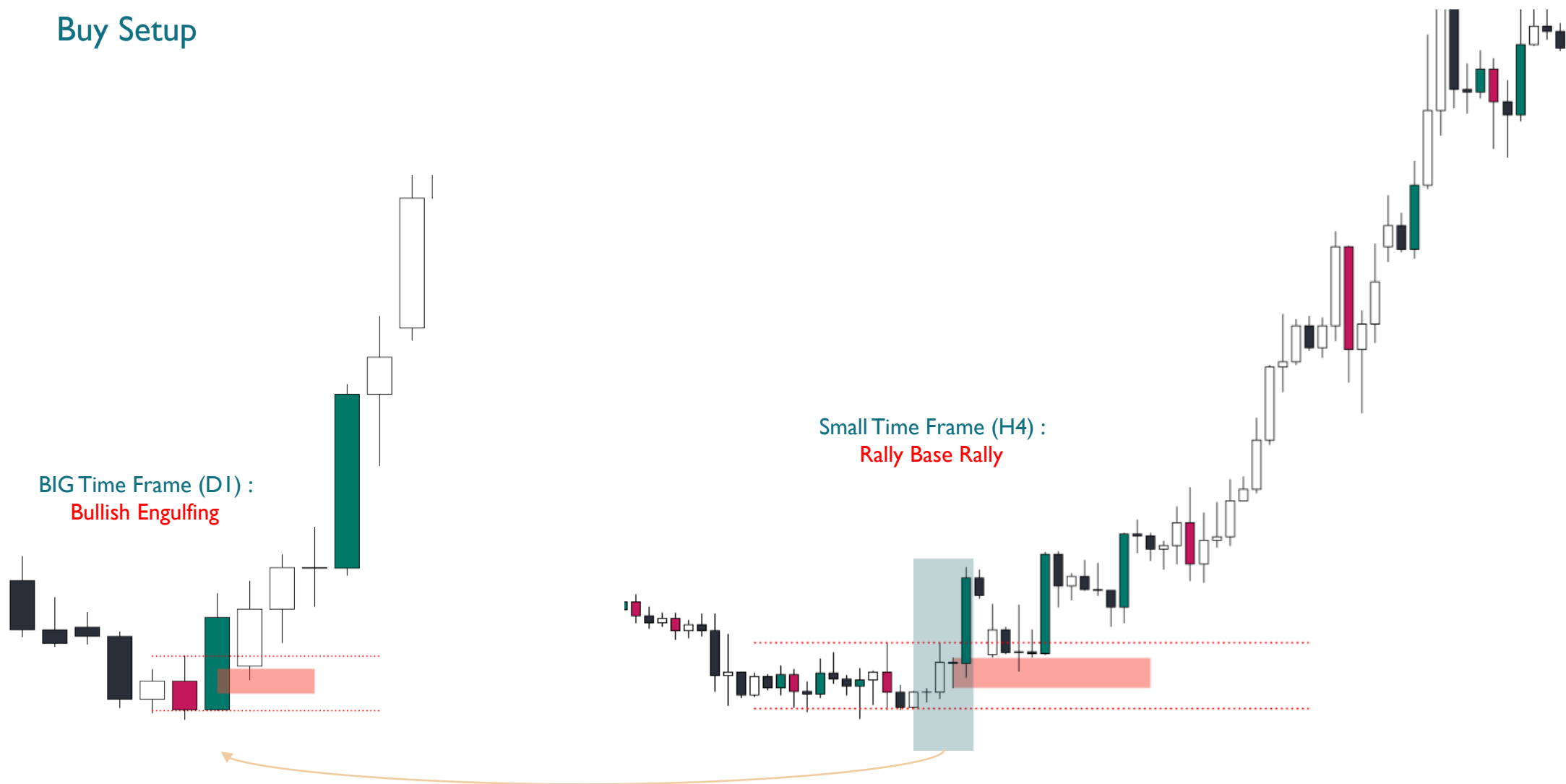
MANIPULATION

Sell Setup



MANIPULATION

Buy Setup

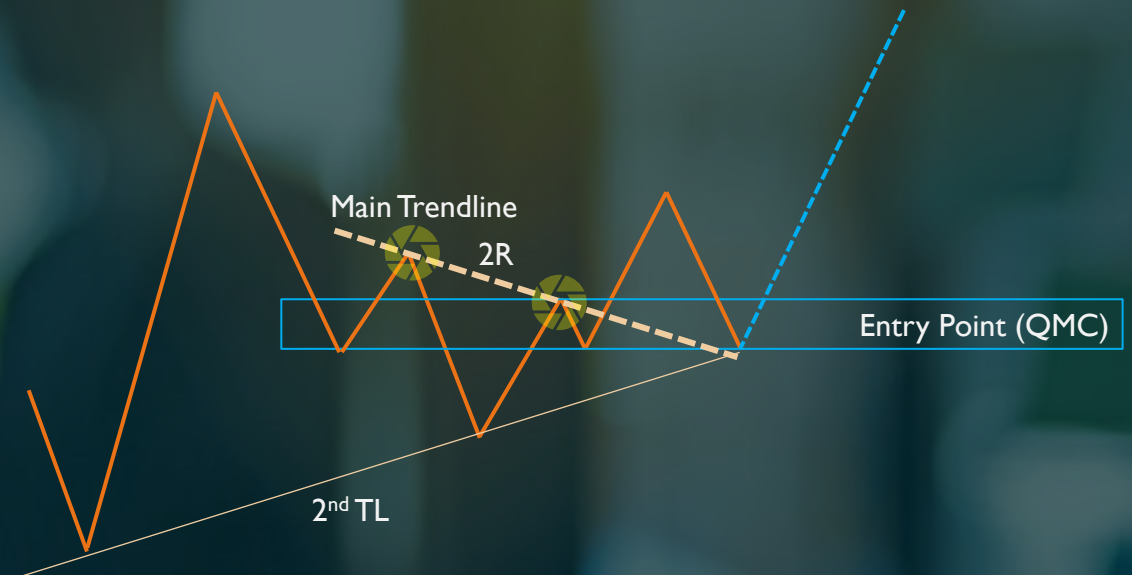
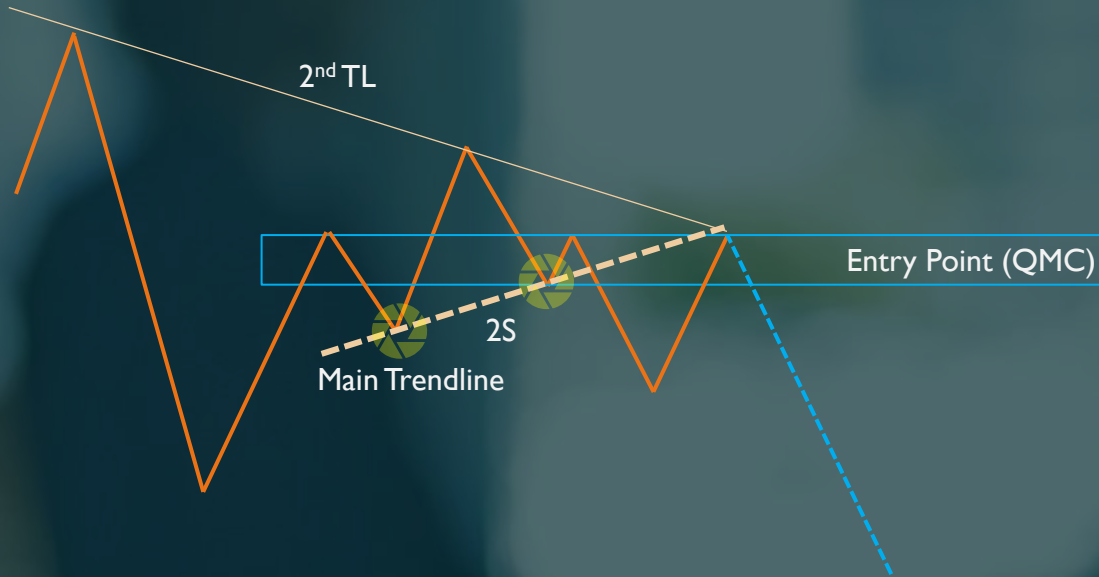


CONFLUENCES KUASA 2 (CK2)

Entry Confirmation

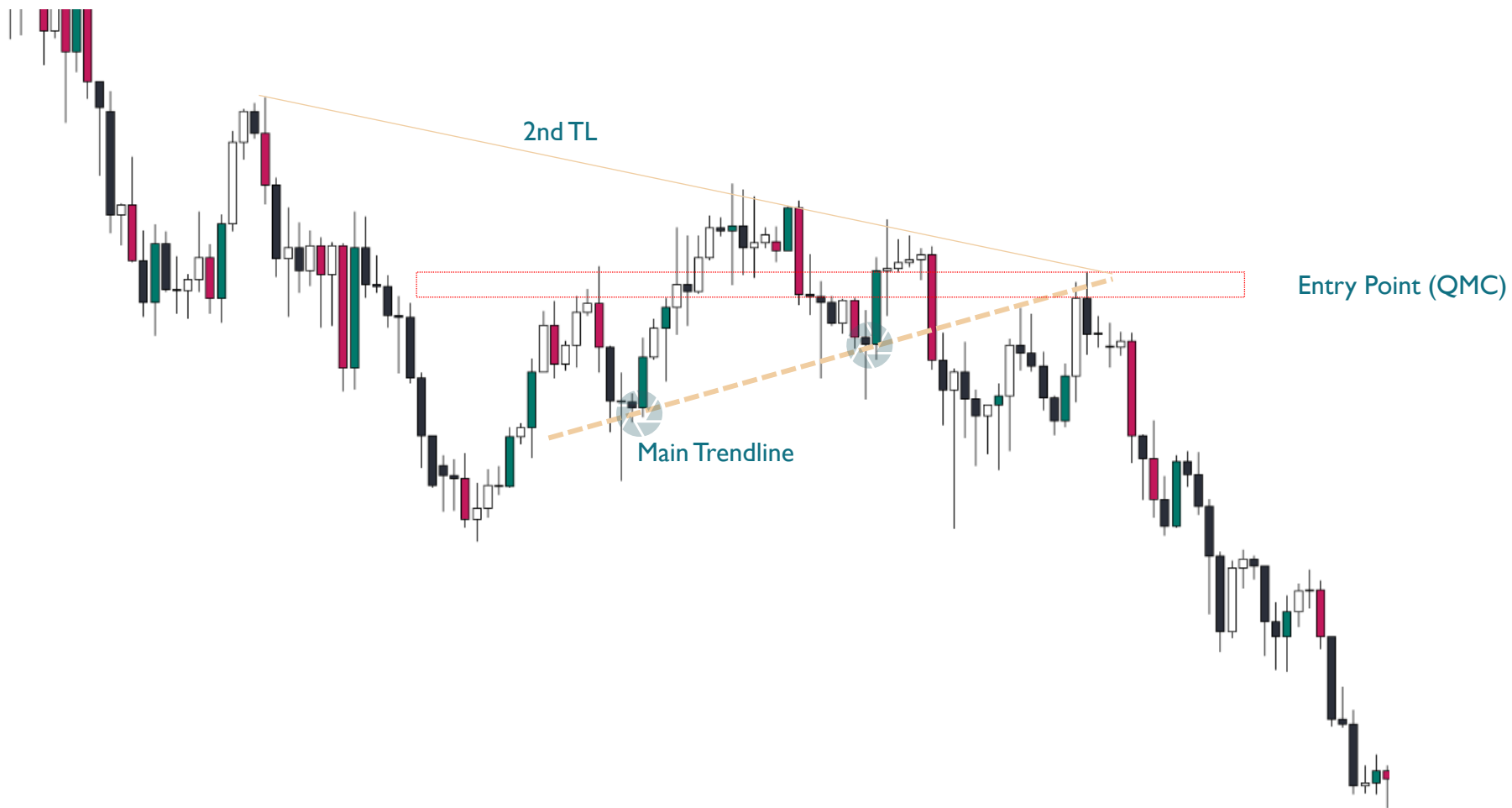
Rule

1. Define Entry Point (QMC, SNRC, SNCR2, Manipulation)
2. Sell Setup : Marking 2 Support (Main Trend Line)
3. Buy Setup : Marking 2 Resistance (Main Trend Line)



CONFLUENCES KUASA 2 (CK2)

Sell Setup



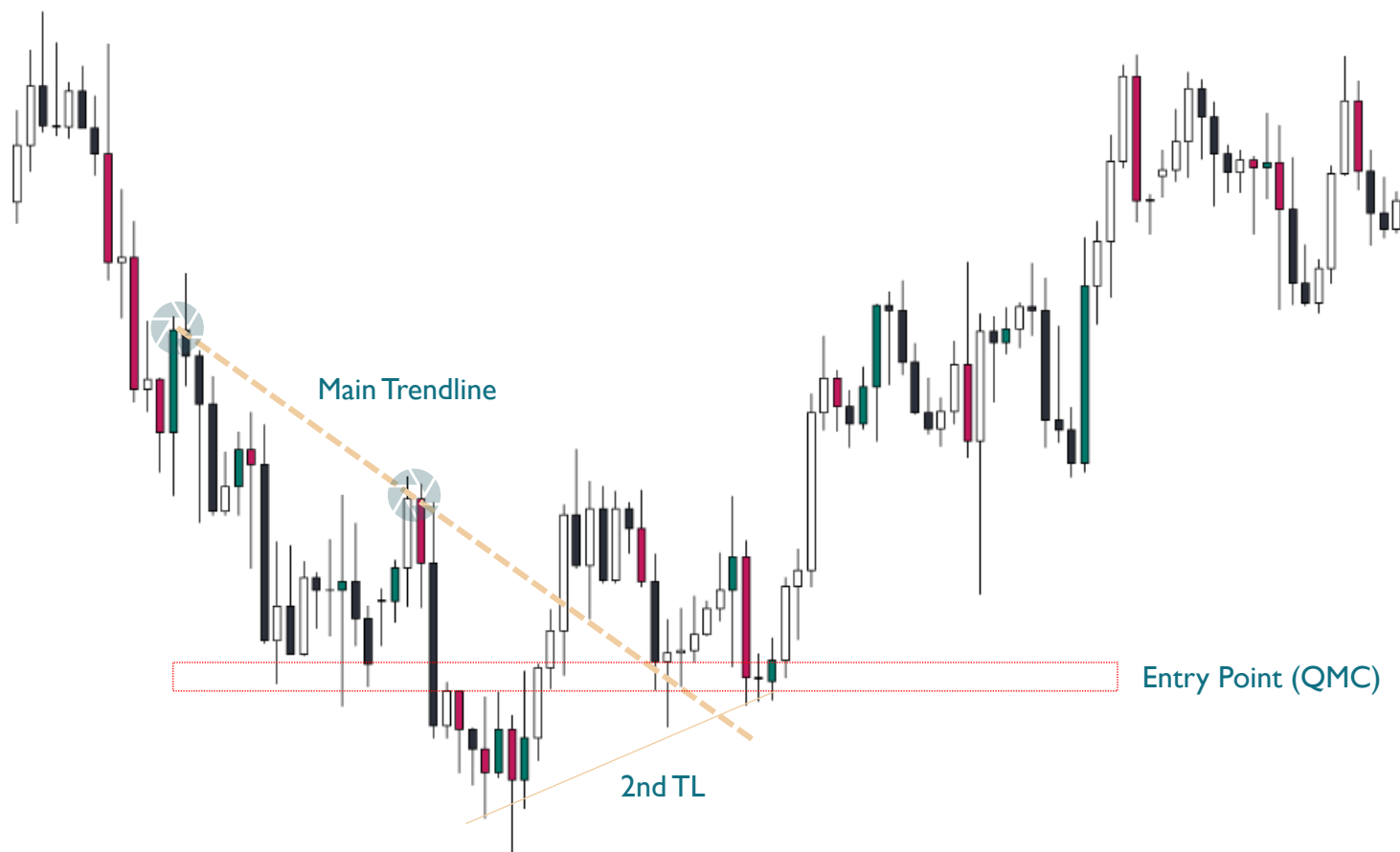
CONFLUENCES KUASA 2 (CK2)

Sell Setup



CONFLUENCES KUASA 2 (CK2)

Buy Setup



CONFLUENCES KUASA 2 (CK2)

Buy Setup

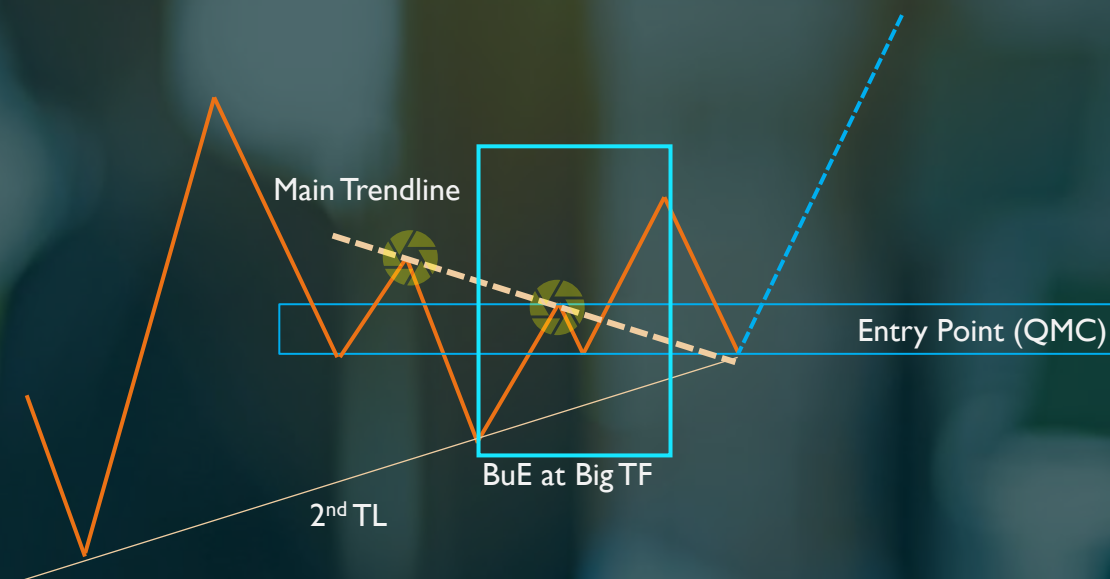
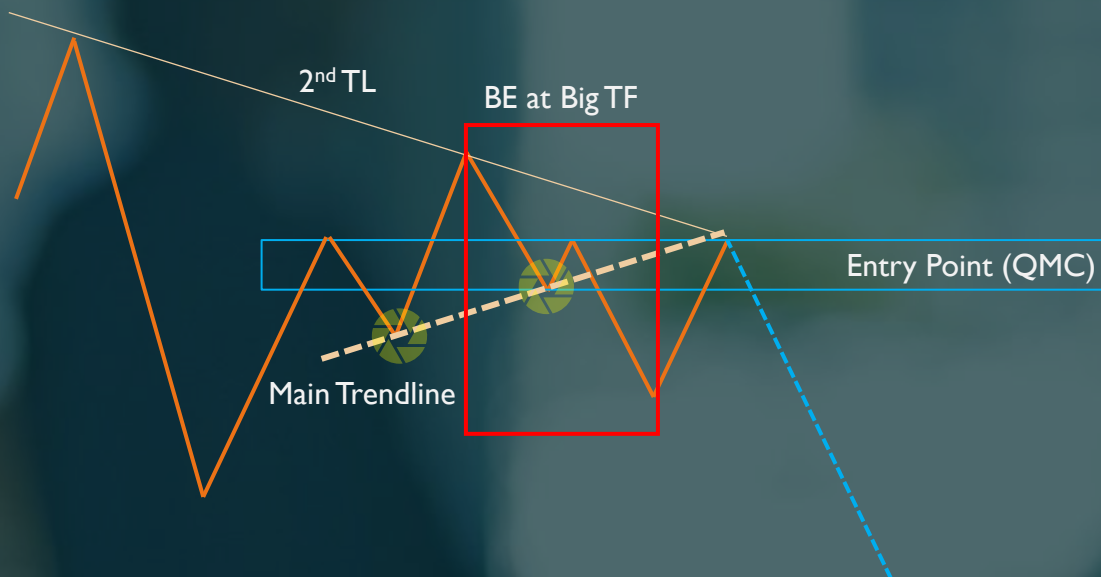


CONFLUENCES KUASA 3 (CK3)

Entry Confirmation

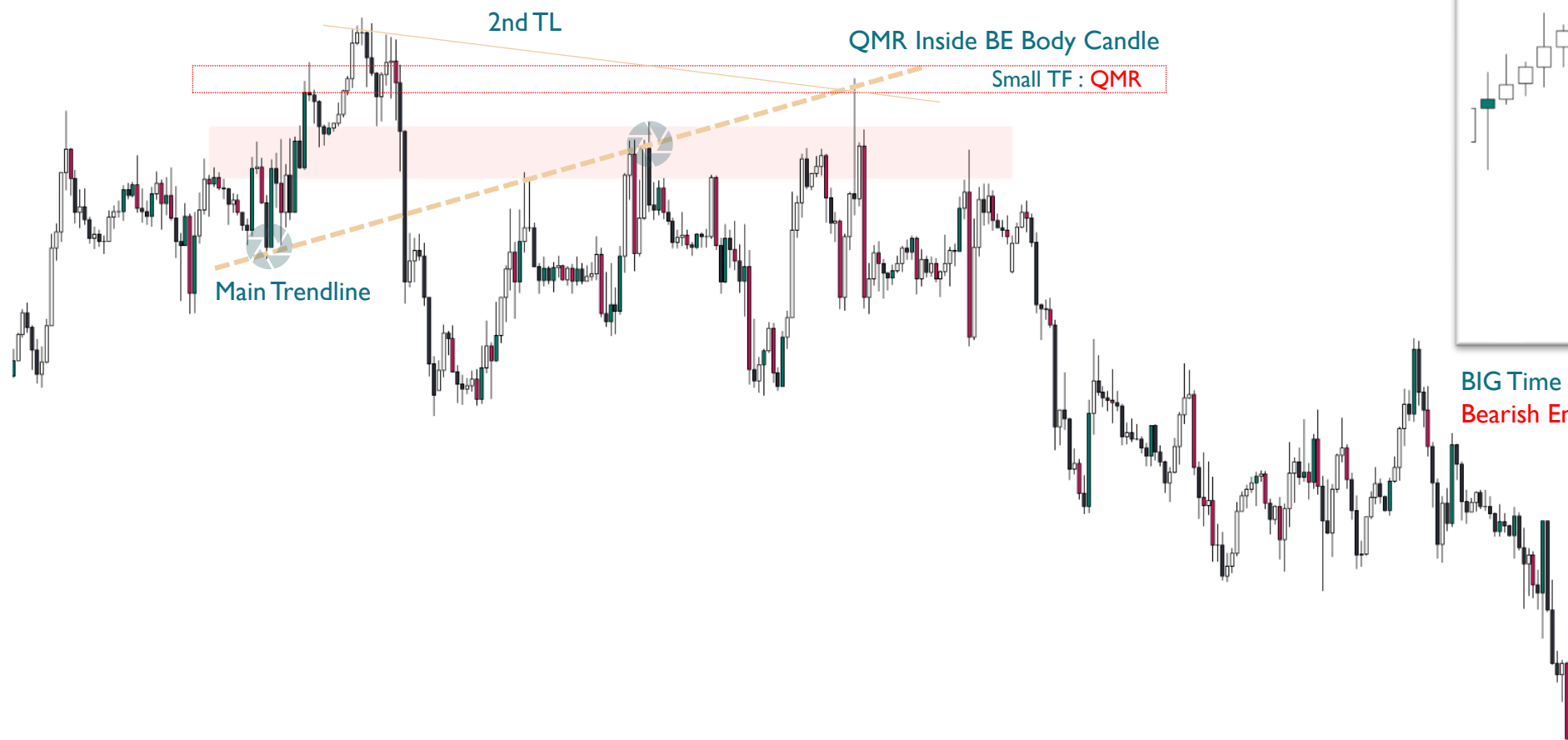
Rule

1. Define Entry Point (QMC, SNRC, SNCR2, Manipulation)
2. Sell Setup : Marking 2 Support (Main Trend Line)
3. Buy Setup : Marking 2 Resistance (Main Trend Line)
4. Bullish/Bearish Engulfing on Big Time Frame



CONFLUENCES KUASA 3 (CK3)

Sell Setup



BIG Time Frame (DI) :
Bearish Engulfing

CONFLUENCES KUASA 3 (CK3)

Buy Setup

