

EURUSD | Aug 04



Prior Day Summary

Open	1.1772
High	1.1797
Low	1.1696
Close	1.1767
Range	0.0101

Fibonacci Clusters

1.1994-1.2001
1.1961-1.1968
1.1936-1.1943
1.1804-1.1811
1.1763-1.1770

Pivot Points

Monthly (M)	
R3	1.2785
R2	1.2347
R1	1.2061
PP	1.1623
S1	1.1337
S2	1.0899
S3	1.0613

Key News (EST)

2:45 EUR French Gov Budget Balance
3:00 EUR Spanish Unemployment Change
5:00 EUR PPI m/m
10:00 USD Factory Orders m/m
10:00 USD IBD/TIPP Economic Optimism

Weekly (W)

R3	1.2177
R2	1.2043
R1	1.1909
PP	1.1775
S1	1.1641
S2	1.1507
S3	1.1373

Daily (D)

R3	1.1911
R2	1.1854
R1	1.1810
PP	1.1753
S1	1.1709
S2	1.1652
S3	1.1608

Floor (F)

R3	1.1898
R2	1.1854
R1	1.1810
PP	1.1753
S1	1.1709
S2	1.1652
S3	1.1608

DeMark (D)

R1	1.1782
PP	1.1739
S1	1.1681

Confluence PowerZones

EURUSD Confluence Matrix

PowerZones	Pivots					Value Areas	Fibonacci Clusters	Volume Profile	Naked VPOC	Bank Flow	Prior Day Summary
	M	W	D	F	D						
1.1961-1.1968							◆				
1.1936-1.1943						◆	◆	◆			
1.1909-1.1916		R1	R3					◆			
1.1860-1.1867											
1.1801-1.1808							◆				
1.1745-1.1752											
1.1696-1.1703								◆			LOW
1.1655-1.1662						◆		◆			
1.1621-1.1628	PP										
1.1575-1.1582											
1.1539-1.1546											
1.1506-1.1513		S2									

iMap

CCI

MACD

STOC

RSI

5 Day Inter-Market Correl.

%	EUR	USD	JPY	S&P	Oil	Gold
EUR		-97	-58	-8	23	44
USD	-97		64	11	-23	-47
JPY	-58	64		-2	6	-42
S&P	-8	11	-2		-11	1
Oil	23	-23	6	-11		27
Gold	44	-47	-42	1	27	

Bank Flow Levels

Volume Profile



TPO/Vol. Value Areas

Area		Volume	TPO
DAILY	VAH	1.1781	1.1784
	POC	1.1755	1.1772
	VAL	1.1736	1.1738

Naked VPOCs

Jul 30	1.1843
Jul 23	1.1612
Jul 20	1.1445
Jul 16	1.1384

Trend

Short

Medium

Long

COT Index

Large 66%**

Comm. 34%

Retail Traders

Long 46.69%

Short 53.31%





Prior Day Summary		Fibonacci Clusters
Open	1.1790	1.1946-1.1953
High	1.1808	1.1919-1.1926
Low	1.1707	1.1883-1.1890
Close	1.1776	1.1691-1.1698
Range	0.0101	1.1665-1.1672

Key News (EST)	2:45 EUR French Gov Budget Balance
	3:00 EUR Spanish Unemployment Change
	5:00 EUR PPI m/m
	10:00 USD Factory Orders m/m
	10:00 USD IBD/TIPP Economic Optimism

Pivot Points	
Monthly (M)	
R3	1.2795
R2	1.2357
R1	1.2078
PP	1.1640
S1	1.1361
S2	1.0923
S3	1.0644

Weekly (W)	
R3	1.2191
R2	1.2055
R1	1.1927
PP	1.1791
S1	1.1663
S2	1.1527
S3	1.1399

Daily (D)	
R3	1.1922
R2	1.1865
R1	1.1821
PP	1.1764
S1	1.1720
S2	1.1663
S3	1.1619

Floor (F)	
R3	1.1909
R2	1.1865
R1	1.1821
PP	1.1764
S1	1.1720
S2	1.1663
S3	1.1619

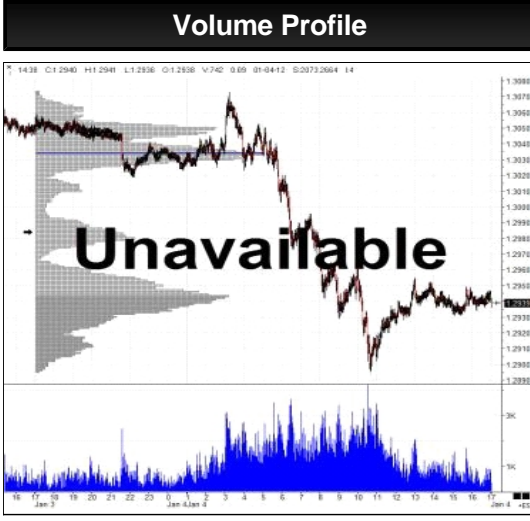
DeMark (D)	
R1	1.1792
PP	1.1750
S1	1.1691

Confluence PowerZones	September Euro Futures 6EU20 Confluence Matrix										
	Pivots					Value Areas	Fibonacci Clusters	Volume Profile	Naked VPOC	Bank Flow	Prior Day Summary
	M	W	D	F	D						
1.1971-1.1978						◆		◆			
1.1946-1.1953							◆	◆			
1.1919-1.1926			R3				◆				
1.1870-1.1877											
1.1811-1.1818											
1.1755-1.1762								◆			
1.1706-1.1713						◆		◆			LOW
1.1665-1.1672							◆				
1.1631-1.1638											
1.1585-1.1592											
1.1549-1.1556											
1.1516-1.1523											

iMap	CCI	MACD	STOC	RSI
------	-----	------	------	-----

5 Day Inter-Market Correl.						
%	EUR	USD	JPY	S&P	Oil	Gold
EUR		-97	-58	-8	23	44
USD	-97		64	11	-23	-47
JPY	-58	64		-2	6	-42
S&P	-8	11	-2		-11	1
Oil	23	-23	6	-11		27
Gold	44	-47	-42	1	27	

Bank Flow Levels	



TPO/Vol. Value Areas		
Area	Volume	TPO
VAH	1.1791	1.1794
POC	1.1765	1.1762
VAL	1.1742	1.1748

Naked VPOCs	
Jul 30	1.1853
Jul 23	1.1624
Jul 20	1.1459
Jul 16	1.1398

Trend	Short	Medium	Long
-------	-------	--------	------

COT Index	Large 66%**	Comm. 34%
-----------	-------------	-----------

Retail Traders	Long 46.69%	Short 53.31%
----------------	-------------	--------------

GBPUSD | Aug 04



Prior Day Summary		Fibonacci Clusters	
Open	1.3078	1.3281-1.3288	
High	1.3113	1.3230-1.3237	
Low	1.3005	1.3010-1.3017	
Close	1.3075	1.2949-1.2956	
Range	0.0108	1.2767-1.2774	
Key News (EST)	10:00 USD Factory Orders m/m		
	10:00 USD IBD/TIPP Economic Optimism		

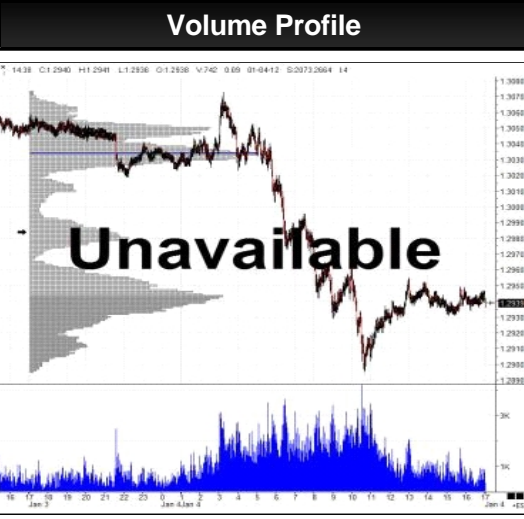
Pivot Points	
Monthly (M)	
R3	1.4190
R2	1.3680
R1	1.3379
PP	1.2869
S1	1.2568
S2	1.2058
S3	1.1757
Weekly (W)	
R3	1.3632
R2	1.3401
R1	1.3239
PP	1.3008
S1	1.2846
S2	1.2615
S3	1.2453
Daily (D)	
R3	1.3231
R2	1.3172
R1	1.3123
PP	1.3064
S1	1.3015
S2	1.2956
S3	1.2907
Floor (F)	
R3	1.3221
R2	1.3172
R1	1.3123
PP	1.3064
S1	1.3015
S2	1.2956
S3	1.2907
DeMark (D)	
R1	1.3094
PP	1.3050
S1	1.2986

Confluence PowerZones	GBPUSD Confluence Matrix										
	Pivots					Value Areas	Fibonacci Clusters	Volume Profile	Naked VPOC	Bank Flow	Prior Day Summary
	M	W	D	F	D						
1.3281-1.3288						◆	◆	◆			
1.3230-1.3237			R3				◆				
1.3198-1.3205											
1.3167-1.3174			R2	R2							
1.3113-1.3120								◆			HIGH
1.3046-1.3053					PP	◆		◆			
1.3003-1.3010		PP				◆	◆	◆			LOW
1.2942-1.2949							◆				
1.2905-1.2912			S3	S3							
1.2866-1.2873	PP										
1.2834-1.2841								◆			
1.2805-1.2812											

iMap	CCI	MACD	STOC	RSI
------	-----	------	------	-----

5 Day Inter-Market Correl.						
%	EUR	USD	JPY	S&P	Oil	Gold
EUR		-97	-58	-8	23	44
USD	-97		64	11	-23	-47
JPY	-58	64		-2	6	-42
S&P	-8	11	-2		-11	1
Oil	23	-23	6	-11		27
Gold	44	-47	-42	1	27	

Bank Flow Levels	



TPO/Vol. Value Areas		
Area	Volume	TPO
VAH	1.3110	1.3105
POC	1.3075	1.3079
VAL	1.3040	1.3045

Naked VPOCs	
Jul 30	1.3128
Jul 29	1.2984
Jul 27	1.2887
Jul 23	1.2736

COT Index	Large 48%**	Comm. 47%
-----------	-------------	-----------

Retail Traders	Long 57.36%	Short 42.64%
----------------	-------------	--------------





Prior Day Summary		Fibonacci Clusters	
Open	1.3090	1.3202-1.3209	
High	1.3117	1.3152-1.3159	
Low	1.3007	1.2870-1.2877	
Close	1.3079	1.2838-1.2845	
Range	0.0110	1.2809-1.2816	

Key News (EST)	10:00 USD Factory Orders m/m
	10:00 USD IBD/TIPP Economic Optimism

Pivot Points	
Monthly (M)	
R3	1.4208
R2	1.3691
R1	1.3399
PP	1.2882
S1	1.2590
S2	1.2073
S3	1.1781

Weekly (W)	
R3	1.3644
R2	1.3409
R1	1.3258
PP	1.3023
S1	1.2872
S2	1.2637
S3	1.2486

Daily (D)	
R3	1.3239
R2	1.3178
R1	1.3129
PP	1.3068
S1	1.3019
S2	1.2958
S3	1.2909

Floor (F)	
R3	1.3227
R2	1.3178
R1	1.3129
PP	1.3068
S1	1.3019
S2	1.2958
S3	1.2909

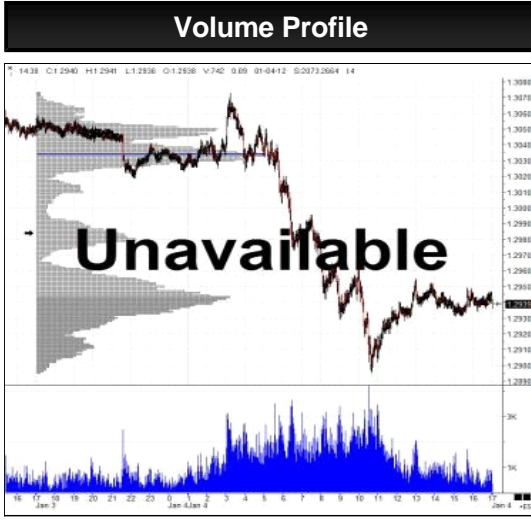
DeMark (D)	
R1	1.3098
PP	1.3052
S1	1.2988

Confluence PowerZones	September Pound Futures 6BU20 Confluence Matrix										
	Pivots					Value Areas	Fibonacci Clusters	Volume Profile	Naked VPOC	Bank Flow	Prior Day Summary
	M	W	D	F	D						
1.3285-1.3292											
1.3234-1.3241			R3					◆			
1.3202-1.3209							◆	◆			
1.3171-1.3178			R2	R2		◆					
1.3117-1.3124						◆					HIGH
1.3050-1.3057					PP						
1.3007-1.3014						◆		◆			LOW
1.2946-1.2953								◆			
1.2909-1.2916			S3	S3							
1.2870-1.2877		S1				◆	◆				
1.2838-1.2845						◆	◆				
1.2809-1.2816							◆				

iMap	CCI	MACD	STOC	RSI
------	-----	------	------	-----

5 Day Inter-Market Correl.						
%	EUR	USD	JPY	S&P	Oil	Gold
EUR		-97	-58	-8	23	44
USD	-97		64	11	-23	-47
JPY	-58	64		-2	6	-42
S&P	-8	11	-2		-11	1
Oil	23	-23	6	-11		27
Gold	44	-47	-42	1	27	

Bank Flow Levels	



TPO/Vol. Value Areas		
Area	Volume	TPO
VAH	1.3071	1.3108
POC	1.3025	1.3094
VAL	1.3010	1.3046

Naked VPOCs	
Jul 30	1.3131
Jul 29	1.2988
Jul 27	1.2890
Jul 23	1.2740

COT Index	Large 48%**	Comm. 47%
-----------	-------------	-----------

Retail Traders	Long 57.36%	Short 42.64%
----------------	-------------	--------------

USDJPY | Aug 04



Prior Day Summary

Open	105.75
High	106.47
Low	105.58
Close	105.94
Range	0.89

Fibonacci Clusters

107.77-107.83
106.45-106.51
105.96-106.02
104.18-104.24
103.88-103.94

Pivot Points

Monthly (M)	
R3	111.93
R2	110.05
R1	107.95
PP	106.07
S1	103.97
S2	102.09
S3	99.99

Weekly (W)

R3	108.49
R2	107.30
R1	106.57
PP	105.38
S1	104.65
S2	103.46
S3	102.73

Daily (D)

R3	107.31
R2	106.89
R1	106.42
PP	106.00
S1	105.53
S2	105.11
S3	104.64

Floor (F)

R3	107.36
R2	106.89
R1	106.42
PP	106.00
S1	105.53
S2	105.11
S3	104.64

DeMark (D)

R1	106.65
PP	106.12
S1	105.76

Key News (EST)

10:00 USD Factory Orders m/m
10:00 USD IBD/TIPP Economic Optimism

USDJPY Confluence Matrix

Confluence PowerZones	Pivots					Value Areas	Fibonacci Clusters	Volume Profile	Naked VPOC	Bank Flow	Prior Day Summary
	M	W	D	F	D						
107.77-107.83						◆	◆	◆			
107.54-107.60								◆	Jul 07		
107.34-107.40				R3							
107.03-107.09											
106.45-106.51							◆	◆			HIGH
105.96-106.02			PPPP				◆	◆			
105.57-105.63						◆		◆			LOW
105.26-105.32								◆			
104.84-104.90											
104.52-104.58											
104.18-104.24							◆	◆			
103.88-103.94							◆				

iMap

CCI

MACD

STOC

RSI

5 Day Inter-Market Correl.

%	EUR	USD	JPY	S&P	Oil	Gold
EUR		-97	-58	-8	23	44
USD	-97		64	11	-23	-47
JPY	-58	64		-2	6	-42
S&P	-8	11	-2		-11	1
Oil	23	-23	6	-11		27
Gold	44	-47	-42	1	27	

Bank Flow Levels

Volume Profile



TPO/Vol. Value Areas

Area	Volume	TPO
VAH	106.17	106.16
POC	105.84	105.84
VAL	105.74	105.76

Naked VPOCs

Jul 22	107.15
Jul 07	107.56

Trend

Short

Medium

Long

COT Index

Large 100%**

Comm. 0%

Retail Traders

Long 50.26%

Short 49.74%



AUDUSD | Aug 04



Prior Day Summary

Open	0.7127
High	0.7150
Low	0.7076
Close	0.7127
Range	0.0074

Fibonacci Clusters

0.7324-0.7329
0.7176-0.7181
0.7144-0.7149
0.7111-0.7116
0.7011-0.7016

Pivot Points

Monthly (M)	
R3	0.7635
R2	0.7431
R1	0.7285
PP	0.7081
S1	0.6935
S2	0.6731
S3	0.6585

Key News (EST)

0:30 AUD Cash Rate
0:30 AUD RBA Rate Statement
2:30 AUD Commodity Prices y/y
10:00 USD Factory Orders m/m
10:00 USD IBD/TIPP Economic Optimism
18:30 AUD AIG Construction Index

Weekly (W)

R3	0.7355
R2	0.7291
R1	0.7215
PP	0.7151
S1	0.7075
S2	0.7011
S3	0.6935

Daily (D)

R3	0.7234
R2	0.7192
R1	0.7160
PP	0.7118
S1	0.7086
S2	0.7044
S3	0.7012

Floor (F)

R3	0.7224
R2	0.7192
R1	0.7160
PP	0.7118
S1	0.7086
S2	0.7044
S3	0.7012

DeMark (D)

R1	0.7164
PP	0.7120
S1	0.7090

Confluence PowerZones

AUDUSD Confluence Matrix

Pivots					Value Areas	Fibonacci Clusters	Volume Profile	Naked VPOC	Bank Flow	Prior Day Summary
M	W	D	F	D						
							◆			
					◆		◆			
					◆		◆			
		R2	R2					Jul 30		
	PP									HIGH
						◆	◆			
	S1						◆			LOW
		S2	S2		◆		◆			
	S2	S3	S3			◆				

iMap

CCI

MACD

STOC

RSI

5 Day Inter-Market Correl.

%	EUR	USD	JPY	S&P	Oil	Gold
EUR		-97	-58	-8	23	44
USD	-97		64	11	-23	-47
JPY	-58	64		-2	6	-42
S&P	-8	11	-2		-11	1
Oil	23	-23	6	-11		27
Gold	44	-47	-42	1	27	

Bank Flow Levels

Volume Profile



TPO/Vol. Value Areas

Area	Volume	TPO
VAH	0.7146	0.7144
POC	0.7134	0.7118
VAL	0.7109	0.7108

Naked VPOCs

Jul 30	0.7193
Jul 20	0.7026
Jul 19	0.6998
Jul 13	0.6941

COT Index

Large **

Comm. **

Retail Traders

Long 39.25%

Short 60.75%



EURJPY | Aug 04



Prior Day Summary

Open	124.50
High	125.06
Low	123.99
Close	124.66
Range	1.07

Fibonacci Clusters

126.05-126.12
125.22-125.29
124.63-124.70
123.32-123.39
122.53-122.60

Pivot Points

Monthly (M)	
R3	131.47
R2	128.34
R1	126.52
PP	123.39
S1	121.57
S2	118.44
S3	116.62

Weekly (W)

R3	127.79
R2	126.50
R1	125.59
PP	124.30
S1	123.39
S2	122.10
S3	121.19

Daily (D)

R3	126.22
R2	125.64
R1	125.15
PP	124.57
S1	124.08
S2	123.50
S3	123.01

Floor (F)

R3	126.13
R2	125.64
R1	125.15
PP	124.57
S1	124.08
S2	123.50
S3	123.01

DeMark (D)

R1	125.40
PP	124.69
S1	124.32

Key News (EST)

2:45 EUR French Gov Budget Balance
3:00 EUR Spanish Unemployment Change
5:00 EUR PPI m/m

EURJPY Confluence Matrix

Confluence PowerZones	Pivots					Value Areas	Fibonacci Clusters	Volume Profile	Naked VPOC	Bank Flow	Prior Day Summary
	M	W	D	F	D						
126.76-126.83						◆		◆			
126.47-126.54	R1	R2						◆			
126.05-126.12							◆				
125.65-125.72											
125.19-125.26							◆	◆			
124.76-124.83								◆			
124.25-124.32		PP			S1	◆		◆			
123.74-123.81											
123.32-123.39	PP	S1					◆				
123.00-123.07			S3	S3				◆			
122.53-122.60							◆	◆			
122.19-122.26											

iMap

CCI

MACD

STOC

RSI

5 Day Inter-Market Correl.

%	EUR	USD	JPY	S&P	Oil	Gold
EUR		-97	-58	-8	23	44
USD	-97		64	11	-23	-47
JPY	-58	64		-2	6	-42
S&P	-8	11	-2		-11	1
Oil	23	-23	6	-11		27
Gold	44	-47	-42	1	27	

Bank Flow Levels

Volume Profile



TPO/Vol. Value Areas

Area	Volume	TPO
VAH	124.73	124.75
POC	124.67	124.65
VAL	124.49	124.49

Naked VPOCs

Jul 29	123.71
Jul 28	123.23
Jul 20	122.82
Jul 16	122.08

Trend

Short

Medium

Long

COT Index

Large **

Comm. **

Retail Traders

Long 42.58%

Short 57.42%



USDCAD | Aug 04



Prior Day Summary

Open	1.3400
High	1.3451
Low	1.3380
Close	1.3385
Range	0.0071

Fibonacci Clusters

1.3548-1.3554
1.3395-1.3401
1.3353-1.3359
1.3222-1.3228
1.3198-1.3204

Pivot Points

Monthly (M)	
R3	1.3908
R2	1.3777
R1	1.3592
PP	1.3461
S1	1.3276
S2	1.3145
S3	1.2960

Key News (EST)

9:30 CAD Manufacturing PMI
10:00 USD Factory Orders m/m
10:00 USD IBD/TIPP Economic Optimism

Weekly (W)

R3	1.3598
R2	1.3529
R1	1.3468
PP	1.3399
S1	1.3338
S2	1.3269
S3	1.3208

Daily (D)

R3	1.3501
R2	1.3476
R1	1.3430
PP	1.3405
S1	1.3359
S2	1.3334
S3	1.3288

Floor (F)

R3	1.3522
R2	1.3476
R1	1.3430
PP	1.3405
S1	1.3359
S2	1.3334
S3	1.3288

DeMark (D)

R1	1.3418
PP	1.3399
S1	1.3347



Confluence PowerZones

USDCAD Confluence Matrix

	Pivots					Value Areas	Fibonacci Clusters	Volume Profile	Naked VPOC	Bank Flow	Prior Day Summary
	M	W	D	F	D						
1.3548-1.3554							◆				
1.3516-1.3522				R3							
1.3483-1.3489								◆			
1.3455-1.3461	PP					◆		◆			
1.3413-1.3419				R1		◆		◆			
1.3371-1.3377											
1.3328-1.3334			S2	S2							
1.3288-1.3294			S3	S3				◆			
1.3263-1.3269		S2				◆		◆			
1.3222-1.3228						◆	◆	◆			
1.3198-1.3204							◆				
1.3170-1.3176											

iMap

CCI

MACD

STOC

RSI

5 Day Inter-Market Correl.

%	EUR	USD	JPY	S&P	Oil	Gold
EUR		-97	-58	-8	23	44
USD	-97		64	11	-23	-47
JPY	-58	64		-2	6	-42
S&P	-8	11	-2		-11	1
Oil	23	-23	6	-11		27
Gold	44	-47	-42	1	27	

Bank Flow Levels

Volume Profile



TPO/Vol. Value Areas

Area	Volume	TPO
VAH	1.3426	1.3430
POC	1.3404	1.3404
VAL	1.3396	1.3396

Naked VPOCs

Jul 19	1.3584
Jul 13	1.3619
Jun 29	1.3662

COT Index

Large 30%**

Comm. 60%

Retail Traders

Long 61.55%

Short 38.45%





Prior Day Summary		Fibonacci Clusters	
Open	1.0763	1.0887-1.0891	
High	1.0839	1.0848-1.0852	
Low	1.0746	1.0719-1.0723	
Close	1.0797	1.0701-1.0705	
Range	0.0093	1.0672-1.0676	

Key News (EST)	2:45 EUR French Gov Budget Balance
	3:00 EUR Spanish Unemployment Change
	5:00 EUR PPI m/m
	10:00 USD Factory Orders m/m
	10:00 USD IBD/TIPP Economic Optimism

Pivot Points	
Monthly (M)	
R3	1.1098
R2	1.0968
R1	1.0861
PP	1.0731
S1	1.0624
S2	1.0494
S3	1.0387

Weekly (W)	
R3	1.0938
R2	1.0888
R1	1.0821
PP	1.0771
S1	1.0704
S2	1.0654
S3	1.0587

Daily (D)	
R3	1.0935
R2	1.0887
R1	1.0842
PP	1.0794
S1	1.0749
S2	1.0701
S3	1.0656

Floor (F)	
R3	1.0932
R2	1.0887
R1	1.0842
PP	1.0794
S1	1.0749
S2	1.0701
S3	1.0656

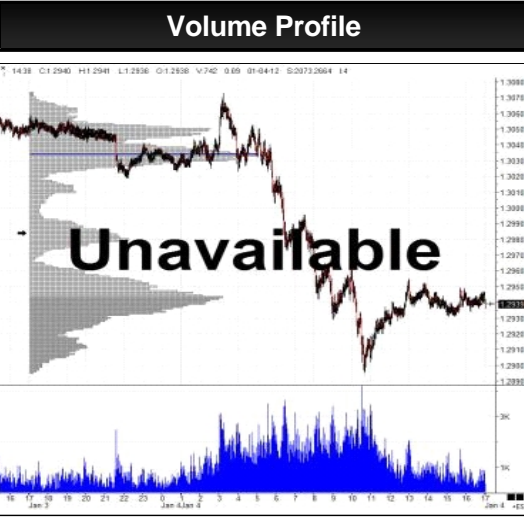
DeMark (D)	
R1	1.0864
PP	1.0805
S1	1.0772

Confluence PowerZones	EURCHF Confluence Matrix										
	Pivots					Value Areas	Fibonacci Clusters	Volume Profile	Naked VPOC	Bank Flow	Prior Day Summary
	M	W	D	F	D						
1.0913-1.0917						◆		◆			
1.0887-1.0891		R2	R2	R2			◆	◆			
1.0862-1.0866					R1						
1.0838-1.0842			R1	R1							HIGH
1.0815-1.0819											
1.0790-1.0794			P	P	P			◆			
1.0745-1.0749			S1	S1		◆		◆			LOW
1.0726-1.0730								◆			
1.0694-1.0698											
1.0672-1.0676							◆				
1.0649-1.0653											
1.0637-1.0641											

iMap	CCI	MACD	STOC	RSI
------	-----	------	------	-----

5 Day Inter-Market Correl.						
%	EUR	USD	JPY	S&P	Oil	Gold
EUR		-97	-58	-8	23	44
USD	-97		64	11	-23	-47
JPY	-58	64		-2	6	-42
S&P	-8	11	-2		-11	1
Oil	23	-23	6	-11		27
Gold	44	-47	-42	1	27	

Bank Flow Levels	



TPO/Vol. Value Areas		
Area	Volume	TPO
VAH	1.0798	1.0805
POC	1.0764	1.0797
VAL	1.0758	1.0763

Naked VPOCs	

COT Index	Large **	Comm. **
-----------	----------	----------

Trend	Short	Medium	Long
Retail Traders	Long 73.32%	Short 26.68%	

EURGBP | Aug 04



Prior Day Summary

Open	0.8994
High	0.9015
Low	0.8982
Close	0.9000
Range	0.0033

Fibonacci Clusters

0.9086-0.9091
0.9059-0.9064
0.9018-0.9023
0.8863-0.8868
0.8820-0.8825

Pivot Points

Monthly (M)	
R3	0.9328
R2	0.9238
R1	0.9118
PP	0.9028
S1	0.8908
S2	0.8818
S3	0.8698

Key News (EST)

2:45 EUR French Gov Budget Balance
3:00 EUR Spanish Unemployment Change
5:00 EUR PPI m/m
10:00 USD Factory Orders m/m
10:00 USD IBD/TIPP Economic Optimism

Weekly (W)

R3	0.9270
R2	0.9209
R1	0.9103
PP	0.9042
S1	0.8936
S2	0.8875
S3	0.8769

Daily (D)

R3	0.9049
R2	0.9032
R1	0.9016
PP	0.8999
S1	0.8983
S2	0.8966
S3	0.8950

Floor (F)

R3	0.9048
R2	0.9032
R1	0.9016
PP	0.8999
S1	0.8983
S2	0.8966
S3	0.8950

DeMark (D)

R1	0.9024
PP	0.9003
S1	0.8991

Confluence PowerZones

EURGBP Confluence Matrix

Pivots					Value Areas	Fibonacci Clusters	Volume Profile	Naked VPOC	Bank Flow	Prior Day Summary
M	W	D	F	D						
					◆					
	R1						◆			
						◆	◆			
						◆	◆			
						◆				
		S1	S1							LOW
					◆		◆			
							◆			
						◆	◆			
						◆				

iMap

CCI

MACD

STOC

RSI

5 Day Inter-Market Correl.

%	EUR	USD	JPY	S&P	Oil	Gold
EUR		-97	-58	-8	23	44
USD	-97		64	11	-23	-47
JPY	-58	64		-2	6	-42
S&P	-8	11	-2		-11	1
Oil	23	-23	6	-11		27
Gold	44	-47	-42	1	27	

Bank Flow Levels

Volume Profile



TPO/Vol. Value Areas

Area		Volume	TPO
DAILY	VAH	0.9000	0.9002
	POC	0.8994	0.8996
	VAL	0.8988	0.8990

Naked VPOCs

Jul 30	0.9048
Jul 29	0.9070
Jul 27	0.9123
Jul 12	0.8950

Trend

Short

Medium

Long

COT Index

Large **

Comm. **

Retail Traders

Long 40.76%

Short 59.24%



GBPJPY | Aug 04



Prior Day Summary

Open	138.23
High	139.03
Low	137.75
Close	138.51
Range	1.28

Fibonacci Clusters

140.79-140.87
140.21-140.29
139.68-139.76
136.80-136.88
136.47-136.55

Pivot Points

Monthly (M)	
R3	147.08
R2	143.14
R1	140.83
PP	136.89
S1	134.58
S2	130.64
S3	128.33

Weekly (W)

R3	144.14
R2	141.67
R1	140.09
PP	137.62
S1	136.04
S2	133.57
S3	131.99

Daily (D)

R3	140.39
R2	139.71
R1	139.11
PP	138.43
S1	137.83
S2	137.15
S3	136.55

Floor (F)

R3	140.31
R2	139.71
R1	139.11
PP	138.43
S1	137.83
S2	137.15
S3	136.55

DeMark (D)

R1	139.41
PP	138.58
S1	138.13

Key News (EST)

10:00 USD Factory Orders m/m
10:00 USD IBD/TIPP Economic Optimism

GBPJPY Confluence Matrix

Confluence PowerZones	Pivots					Value Areas	Fibonacci Clusters	Volume Profile	Naked VPOC	Bank Flow	Prior Day Summary
	M	W	D	F	D						
141.64-141.72		R2									
140.79-140.87	R1					◆	◆				
140.21-140.29							◆				
139.68-139.76			R2	R2			◆	◆			
139.13-139.21								◆			
138.62-138.70						◆					
138.14-138.22						◆					
137.72-137.80						◆					LOW
137.10-137.18			S2	S2				◆			
136.60-136.68								◆			
136.02-136.10	S1							◆			
135.60-135.68											

iMap

CCI

MACD

STOC

RSI

5 Day Inter-Market Correl.

%	EUR	USD	JPY	S&P	Oil	Gold
EUR		-97	-58	-8	23	44
USD	-97		64	11	-23	-47
JPY	-58	64		-2	6	-42
S&P	-8	11	-2		-11	1
Oil	23	-23	6	-11		27
Gold	44	-47	-42	1	27	

Bank Flow Levels

Volume Profile



TPO/Vol. Value Areas

Area	Volume	TPO
VAH	138.62	138.68
POC	138.54	138.54
VAL	138.32	138.30

Naked VPOCs

Jul 30	136.96
Jul 29	136.41
Jul 19	134.50
Jun 30	133.37

Trend

Short

Medium

Long

COT Index

Large **

Comm. **

Retail Traders

Long 56.72%

Short 43.28%





Prior Day Summary

Open	0.6626
High	0.6643
Low	0.6575
Close	0.6616
Range	0.0068

Fibonacci Clusters

0.6787-0.6792
0.6645-0.6650
0.6618-0.6623
0.6498-0.6503
0.6465-0.6470

Pivot Points

Monthly (M)	
R3	0.7024
R2	0.6870
R1	0.6748
PP	0.6594
S1	0.6472
S2	0.6318
S3	0.6196

Key News (EST)

10:00 USD Factory Orders m/m
10:00 USD IBD/TIPP Economic Optimism

Weekly (W)

R3	0.6784
R2	0.6750
R1	0.6688
PP	0.6654
S1	0.6592
S2	0.6558
S3	0.6496

Daily (D)

R3	0.6715
R2	0.6679
R1	0.6647
PP	0.6611
S1	0.6579
S2	0.6543
S3	0.6511

Floor (F)

R3	0.6711
R2	0.6679
R1	0.6647
PP	0.6611
S1	0.6579
S2	0.6543
S3	0.6511

DeMark (D)

R1	0.6630
PP	0.6602
S1	0.6562

Confluence PowerZones

NZDUSD Confluence Matrix

Pivots					Value Areas	Fibonacci Clusters	Volume Profile	Naked VPOC	Bank Flow	Prior Day Summary
M	W	D	F	D						
						◆				
							◆			
		R3					◆			
					◆		◆			
		R1	R1		◆	◆				
					◆	◆				CLOSE
	PP									
							◆			LOW
	S2				◆		◆	Jul 19		
					◆		◆			
						◆				

iMap

CCI

MACD

STOC

RSI

5 Day Inter-Market Correl.

%	EUR	USD	JPY	S&P	Oil	Gold
EUR		-97	-58	-8	23	44
USD	-97		64	11	-23	-47
JPY	-58	64		-2	6	-42
S&P	-8	11	-2		-11	1
Oil	23	-23	6	-11		27
Gold	44	-47	-42	1	27	

Bank Flow Levels

Volume Profile



TPO/Vol. Value Areas

Area		Volume	TPO
DAILY	VAH	0.6640	0.6638
	POC	0.6627	0.6628
	VAL	0.6618	0.6614

Naked VPOCs

Jul 30	0.6693
Jul 19	0.6558
Jun 30	0.6453
Jun 29	0.6424

Trend

Short

Medium

Long

COT Index

Large **

Comm. **

Retail Traders

Long 39.25%

Short 60.75%



USDCHF | Aug 04



Prior Day Summary	
Open	0.9139
High	0.9242
Low	0.9128
Close	0.9176
Range	0.0114

Fibonacci Clusters	
	0.9286-0.9292
	0.9149-0.9155
	0.9123-0.9129
	0.9084-0.9090
	0.8958-0.8964

Pivot Points	
Monthly (M)	
R3	0.9836
R2	0.9665
R1	0.9398
PP	0.9227
S1	0.8960
S2	0.8789
S3	0.8522

Key News (EST)

10:00 USD Factory Orders m/m
10:00 USD IBD/TIPP Economic Optimism

Weekly (W)	
R3	0.9396
R2	0.9313
R1	0.9222
PP	0.9139
S1	0.9048
S2	0.8965
S3	0.8874

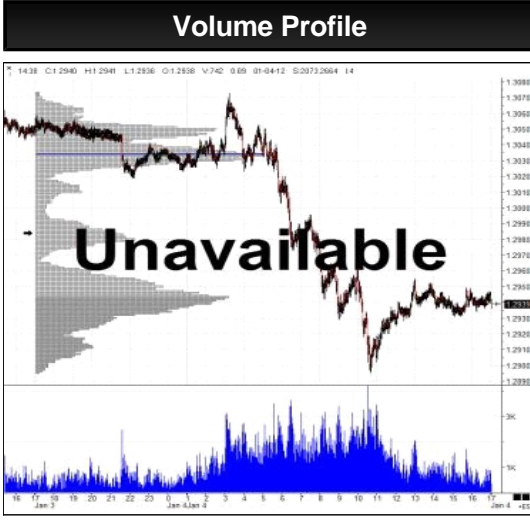
Confluence PowerZones	USDCHF Confluence Matrix										
	Pivots					Value Areas	Fibonacci Clusters	Volume Profile	Naked VPOC	Bank Flow	Prior Day Summary
	M	W	D	F	D						
0.9312-0.9318		R2						◆			
0.9286-0.9292							◆	◆			
0.9261-0.9267					R1			◆			
0.9237-0.9243						◆					HIGH
0.9200-0.9206											
0.9163-0.9169								◆			
0.9123-0.9129							◆	◆			LOW
0.9084-0.9090							◆	◆	Jul 30		
0.9056-0.9062											
0.9019-0.9025						◆					
0.8994-0.9000								◆			
0.8958-0.8964	S1						◆				

Daily (D)	
R3	0.9350
R2	0.9296
R1	0.9236
PP	0.9182
S1	0.9122
S2	0.9068
S3	0.9008

iMap	CCI	MACD	STOC	RSI
------	-----	------	------	-----

5 Day Inter-Market Correl.						
%	EUR	USD	JPY	S&P	Oil	Gold
EUR		-97	-58	-8	23	44
USD	-97		64	11	-23	-47
JPY	-58	64		-2	6	-42
S&P	-8	11	-2		-11	1
Oil	23	-23	6	-11		27
Gold	44	-47	-42	1	27	

Bank Flow Levels	



Floor (F)	
R3	0.9356
R2	0.9296
R1	0.9236
PP	0.9182
S1	0.9122
S2	0.9068
S3	0.9008

TPO/Vol. Value Areas		
Area	Volume	TPO
VAH	0.9199	0.9205
POC	0.9179	0.9177
VAL	0.9145	0.9143

DAILY

Naked VPOCs	
Jul 30	0.9086
Jul 23	0.9245
Jul 22	0.9285
Jul 21	0.9322

Trend	Short	Medium	Long
-------	-------	--------	------

COT Index	Large 58%	Comm. 28%
-----------	-----------	-----------

Retail Traders	Long 61.50%	Short 38.50%
----------------	-------------	--------------

DeMark (D)	
R1	0.9266
PP	0.9197
S1	0.9152

in

Tweet

Share

Like

EURAUD | Aug 04



Prior Day Summary

Open	1.6509
High	1.6559
Low	1.6469
Close	1.6510
Range	0.0090

Fibonacci Clusters

1.6766-1.6772
1.6707-1.6713
1.6631-1.6637
1.6387-1.6393
1.6339-1.6345

Pivot Points

Monthly (M)	
R3	1.7099
R2	1.6823
R1	1.6654
PP	1.6378
S1	1.6209
S2	1.5933
S3	1.5764

Key News (EST)

0:30 AUD Cash Rate
 0:30 AUD RBA Rate Statement
 2:30 AUD Commodity Prices y/y
 2:45 EUR French Gov Budget Balance
 3:00 EUR Spanish Unemployment Change
 5:00 EUR PPI m/m
 10:00 USD Factory Orders m/m
 10:00 USD IBD/TIPP Economic Optimism
 18:30 AUD AIG Construction Index

Weekly (W)

R3	1.6783
R2	1.6665
R1	1.6576
PP	1.6458
S1	1.6369
S2	1.6251
S3	1.6162

Daily (D)

R3	1.6647
R2	1.6603
R1	1.6557
PP	1.6513
S1	1.6467
S2	1.6423
S3	1.6377

Floor (F)

R3	1.6649
R2	1.6603
R1	1.6557
PP	1.6513
S1	1.6467
S2	1.6423
S3	1.6377

DeMark (D)

R1	1.6580
PP	1.6524
S1	1.6490



Confluence PowerZones

EURAUD Confluence Matrix

	Pivots					Value Areas	Fibonacci Clusters	Volume Profile	Naked VPOC	Bank Flow	Prior Day Summary
	M	W	D	F	D						
1.6766-1.6772						◆	◆				
1.6707-1.6713							◆				
1.6631-1.6637							◆	◆			
1.6593-1.6599								◆			
1.6553-1.6559				R1	R1			◆			HIGH
1.6507-1.6513				PP	PP						OPEN
1.6467-1.6473				S1	S1	◆					LOW
1.6426-1.6432								◆			
1.6387-1.6393							◆	◆			
1.6339-1.6345							◆	◆			
1.6295-1.6301											
1.6235-1.6241											

iMap

CCI

MACD

STOC

RSI

5 Day Inter-Market Correl.

%	EUR	USD	JPY	S&P	Oil	Gold
EUR		-97	-58	-8	23	44
USD	-97		64	11	-23	-47
JPY	-58	64		-2	6	-42
S&P	-8	11	-2		-11	1
Oil	23	-23	6	-11		27
Gold	44	-47	-42	1	27	

Bank Flow Levels

Volume Profile



TPO/Vol. Value Areas

Area	Volume	TPO
VAH	1.6530	1.6531
POC	1.6499	1.6515
VAL	1.6490	1.6493

Naked VPOCs

Jul 29	1.6408
Jul 28	1.6370
Jul 22	1.6202
Jul 21	1.6168

Trend

Short

Medium

Long

COT Index

Large **

Comm. **

Retail Traders

Long 58.50%

Short 41.50%



AUDJPY | Aug 04



Prior Day Summary

Open	75.35
High	75.80
Low	75.10
Close	75.50
Range	0.70

Fibonacci Clusters

77.38-77.44
75.41-75.47
75.18-75.24
74.85-74.91
73.85-73.91

Pivot Points

Monthly (M)	
R3	79.95
R2	78.41
R1	76.99
PP	75.45
S1	74.03
S2	72.49
S3	71.07

Key News (EST)

0:30 AUD Cash Rate
0:30 AUD RBA Rate Statement
2:30 AUD Commodity Prices y/y
10:00 USD Factory Orders m/m
10:00 USD IBD/TIPP Economic Optimism
18:30 AUD AIG Construction Index

Weekly (W)

R3	77.16
R2	76.54
R1	76.06
PP	75.44
S1	74.96
S2	74.34
S3	73.86

Daily (D)

R3	76.54
R2	76.17
R1	75.84
PP	75.47
S1	75.14
S2	74.77
S3	74.44

Floor (F)

R3	76.50
R2	76.17
R1	75.84
PP	75.47
S1	75.14
S2	74.77
S3	74.44

DeMark (D)

R1	76.00
PP	75.55
S1	75.30

Confluence PowerZones

AUDJPY Confluence Matrix

Pivots					Value Areas	Fibonacci Clusters	Volume Profile	Naked VPOC	Bank Flow	Prior Day Summary
M	W	D	F	D						
77.71-77.77							◆			
77.38-77.44					◆	◆	◆			
76.85-76.91					◆					
76.32-76.38										
75.90-75.96							◆			
75.48-75.54							◆			CLOSE
75.10-75.16			S1	S1			◆			LOW
74.80-74.86					◆	◆	◆			
74.44-74.50			S3	S3						
74.18-74.24										
73.85-73.91		S3				◆	◆			
73.60-73.66										

iMap

CCI

MACD

STOC

RSI

5 Day Inter-Market Correl.

%	EUR	USD	JPY	S&P	Oil	Gold
EUR		-97	-58	-8	23	44
USD	-97		64	11	-23	-47
JPY	-58	64		-2	6	-42
S&P	-8	11	-2		-11	1
Oil	23	-23	6	-11		27
Gold	44	-47	-42	1	27	

Bank Flow Levels

Volume Profile



TPO/Vol. Value Areas

Area		Volume	TPO
DAILY	VAH	75.59	75.58
	POC	75.38	75.46
	VAL	75.31	75.32

Naked VPOCs

Jul 22	76.50

Trend

Short

Medium

Long

COT Index

Large **

Comm. **

Retail Traders

Long 50.19%

Short 49.81%



Open	12297.0
High	12693.0
Low	12267.0
Close	12648.0
Range	426.0

13073.5-13083.5
12926.0-12936.0
12602.5-12612.5
12390.5-12400.5
12312.0-12322.0

Monthly (M)	
R3	14321.9
R2	13813.2
R1	13081.9
PP	12573.2
S1	11841.9
S2	11333.2
S3	10601.9

Key News (EST)

2:45 EUR French Gov Budget Balance
 3:00 EUR Spanish Unemployment Change
 5:00 EUR PPI m/m
 10:00 USD Factory Orders m/m
 10:00 USD IBD/TIPP Economic Optimism

Weekly (W)	
R3	13589.4
R2	13281.2
R1	12815.9
PP	12507.7
S1	12042.4
S2	11734.2
S3	11268.9

Daily (D)	
R3	13231.0
R2	12962.0
R1	12805.0
PP	12536.0
S1	12379.0
S2	12110.0
S3	11953.0

Floor (F)	
R3	13119.0
R2	12962.0
R1	12805.0
PP	12536.0
S1	12379.0
S2	12110.0
S3	11953.0

DeMark (D)	
R1	12883.5
PP	12575.2
S1	12457.5

tothetick™

Confluence PowerZones

September Dax Futures FDAXU20 Confluence Matrix

	Pivots					Value Areas	Fibonacci Clusters	Volume Profile	Naked VPOC	Open Gaps	Prior Day Summary
	M	W	D	F	D						
13132.5-13142.5								◆			
13073.5-13083.5	R1					◆	◆	◆			
13013.5-13023.5								◆			
12926.0-12936.0							◆				
12853.0-12863.0											
12786.0-12796.0								◆			
12692.5-12702.5						◆		◆			HIGH
12602.5-12612.5						◆	◆	◆			
12486.0-12496.0											
12390.5-12400.5							◆				
12312.0-12322.0							◆			Jul 31	
12196.5-12206.5											

iMap

CCI

MACD

STOC

RSI

5 Day Inter-Market Correl.

%	EUR	USD	JPY	S&P	Oil	Gold
EUR		-97	-58	-8	23	44
USD	-97		64	11	-23	-47
JPY	-58	64		-2	6	-42
S&P	-8	11	-2		-11	1
Oil	23	-23	6	-11		27
Gold	44	-47	-42	1	27	

Open Gaps

Jul 31	12318.5
Jul 29	12864.0
Jul 23	12990.5

Volume Profile



TPO/Vol. Value Areas

Area	Volume	TPO
VAH	12693.0	12693.0
POC	12650.5	12648.0
VAL	12474.0	12469.0

Naked VPOCs

Jul 23	13164.5

COT Index

Large **

Comm. **

Trend

Short

Medium

Long



Prior Day Summary

Open	3164
High	3258
Low	3158
Close	3245
Range	100

Fibonacci Clusters

3348-3353
3325-3330
3179-3184
3150-3155
3122-3127

Pivot Points

Monthly (M)	
R3	3655
R2	3550
R1	3371
PP	3266
S1	3087
S2	2982
S3	2803

Key News (EST)

2:45 EUR French Gov Budget Balance
3:00 EUR Spanish Unemployment Change
5:00 EUR PPI m/m
10:00 USD Factory Orders m/m
10:00 USD IBD/TIPP Economic Optimism

Weekly (W)

R3	3446
R2	3385
R1	3289
PP	3228
S1	3132
S2	3071
S3	2975

Daily (D)

R3	3382
R2	3320
R1	3282
PP	3220
S1	3182
S2	3120
S3	3082

Floor (F)

R3	3358
R2	3320
R1	3282
PP	3220
S1	3182
S2	3120
S3	3082

DeMark (D)

R1	3302
PP	3230
S1	3202

Confluence PowerZones

September Eurostoxx Futures FESXU20 Confluence Matrix

Pivots					Value Areas	Fibonacci Clusters	Volume Profile	Naked VPOC	Open Gaps	Prior Day Summary
M	W	D	F	D						
							◆			
					◆	◆	◆			
						◆	◆			
									Jul 29	
					◆					HIGH
	PP						◆			
					◆		◆			
					◆		◆			
							◆			

iMap

CCI

MACD

STOC

RSI

5 Day Inter-Market Correl.

%	EUR	USD	JPY	S&P	Oil	Gold
EUR		-97	-58	-8	23	44
USD	-97		64	11	-23	-47
JPY	-58	64		-2	6	-42
S&P	-8	11	-2		-11	1
Oil	23	-23	6	-11		27
Gold	44	-47	-42	1	27	

Open Gaps

Jul 29	3307
Jul 23	3338

Volume Profile



TPO/Vol. Value Areas

Area	Volume	TPO
VAH	3258	3258
POC	3247	3244
VAL	3216	3192

Naked VPOCs

Jul 23	3382

COT Index

Large **

Comm. **

Trend

Short

Medium

Long



Open	135.16
High	135.22
Low	135.07
Close	135.13
Range	0.15

135.77-135.80
135.60-135.63
135.48-135.51
134.82-134.85
134.72-134.75

Monthly (M)

R3	136.39
R2	135.87
R1	135.55
PP	135.03
S1	134.71
S2	134.19
S3	133.87

Weekly (W)

R3	136.27
R2	135.81
R1	135.53
PP	135.07
S1	134.79
S2	134.33
S3	134.05

Daily (D)

R3	135.36
R2	135.29
R1	135.21
PP	135.14
S1	135.06
S2	134.99
S3	134.91

Floor (F)

R3	135.37
R2	135.29
R1	135.21
PP	135.14
S1	135.06
S2	134.99
S3	134.91

DeMark (D)

R1	135.18
PP	135.12
S1	135.02

Key News (EST)

2:45 EUR French Gov Budget Balance
3:00 EUR Spanish Unemployment Change
5:00 EUR PPI m/m
10:00 USD Factory Orders m/m
10:00 USD IBD/TIPP Economic Optimism

tothetick™

Confluence PowerZones

September Bobl Futures FGBMU20 Confluence Matrix

	Pivots					Value Areas	Fibonacci Clusters	Volume Profile	Naked VPOC	Open Gaps	Prior Day Summary
	M	W	D	F	D						
135.77-135.80							◆				
135.60-135.63							◆				
135.48-135.51						◆	◆	◆			
135.34-135.37			R3	R3				◆			
135.25-135.28								◆			
135.14-135.17			PP	PP		◆					OPEN
135.05-135.08		PP	S1	S1							LOW
134.94-134.97						◆		◆			
134.82-134.85							◆	◆			
134.72-134.75							◆	◆			
134.55-134.58											
134.40-134.43											

iMap

CCI

MACD

STOC

RSI

5 Day Inter-Market Correl.

%	EUR	USD	JPY	S&P	Oil	Gold
EUR		-97	-58	-8	23	44
USD	-97		64	11	-23	-47
JPY	-58	64		-2	6	-42
S&P	-8	11	-2		-11	1
Oil	23	-23	6	-11		27
Gold	44	-47	-42	1	27	

Open Gaps

Jun 10	134.21

Volume Profile



TPO/Vol. Value Areas

Area	Volume	TPO
VAH	135.14	135.16
POC	135.12	135.12
VAL	135.09	135.10

Naked VPOCs

Jul 29	134.99

COT Index

Large **

Comm. **

Trend

Short

Medium

Long

Bund | Aug 04

Prior Day Summary

Open	177.44
High	177.48
Low	177.03
Close	177.38
Range	0.45

Fibonacci Clusters

179.19-179.23
178.88-178.92
176.81-176.85
176.50-176.54
176.28-176.32

Pivot Points

Monthly (M)

R3	181.65
R2	179.83
R1	178.68
PP	176.86
S1	175.71
S2	173.89
S3	172.74

Weekly (W)

R3	180.41
R2	179.21
R1	178.36
PP	177.16
S1	176.31
S2	175.11
S3	174.26

Daily (D)

R3	178.02
R2	177.75
R1	177.57
PP	177.30
S1	177.12
S2	176.85
S3	176.67

Floor (F)

R3	177.93
R2	177.75
R1	177.57
PP	177.30
S1	177.12
S2	176.85
S3	176.67

DeMark (D)

R1	177.43
PP	177.23
S1	176.98

Key News (EST)

2:45 EUR French Gov Budget Balance
3:00 EUR Spanish Unemployment Change
5:00 EUR PPI m/m
10:00 USD Factory Orders m/m
10:00 USD IBD/TIPP Economic Optimism



Confluence PowerZones

September Bund Futures FGBLU20 Confluence Matrix

	Pivots					Value Areas	Fibonacci Clusters	Volume Profile	Naked VPOC	Open Gaps	Prior Day Summary
	M	W	D	F	D						
179.19-179.23		R2				◆	◆				
178.88-178.92						◆	◆	◆			
178.34-178.38		R1						◆			
177.90-177.94				R3							
177.56-177.60			R1	R1							
177.41-177.45					R1						OPEN
177.18-177.22						◆					
177.02-177.06								◆			LOW
176.81-176.85			S2	S2			◆	◆			
176.50-176.54							◆				
176.28-176.32		S1					◆				
175.94-175.98											

iMap

CCI

MACD

STOC

RSI

5 Day Inter-Market Correl.

%	EUR	USD	JPY	S&P	Oil	Gold
EUR		-97	-58	-8	23	44
USD	-97		64	11	-23	-47
JPY	-58	64		-2	6	-42
S&P	-8	11	-2		-11	1
Oil	23	-23	6	-11		27
Gold	44	-47	-42	1	27	

Open Gaps

Jun 10	174.13

Volume Profile



TPO/Vol. Value Areas

Area	Volume	TPO
VAH	177.39	177.40
POC	177.27	177.24
VAL	177.21	177.22

Naked VPOCs

Jul 31	177.80
Jul 29	176.92

COT Index

Large **

Comm. **

Trend

Short

Medium

Long





Prior Day Summary

Open	112.135
High	112.165
Low	112.115
Close	112.130
Range	0.050

Fibonacci Clusters

112.390-112.395
112.315-112.320
112.070-112.075
112.040-112.045
112.000-112.005

Pivot Points

Monthly (M)	
R3	112.411
R2	112.303
R1	112.236
PP	112.128
S1	112.061
S2	111.953
S3	111.886

Weekly (W)	
R3	112.411
R2	112.303
R1	112.236
PP	112.128
S1	112.061
S2	111.953
S3	111.886

Daily (D)	
R3	112.209
R2	112.187
R1	112.159
PP	112.137
S1	112.109
S2	112.087
S3	112.059

Floor (F)	
R3	112.215
R2	112.187
R1	112.159
PP	112.137
S1	112.109
S2	112.087
S3	112.059

DeMark (D)	
R1	112.148
PP	112.131
S1	112.098

Key News (EST)

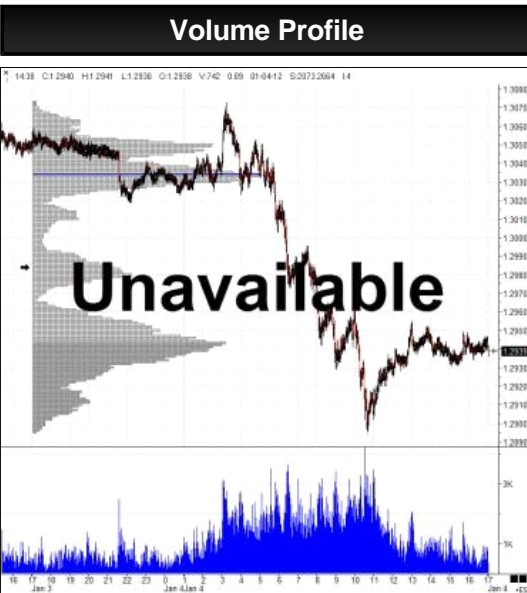
2:45 EUR French Gov Budget Balance
3:00 EUR Spanish Unemployment Change
5:00 EUR PPI m/m
10:00 USD Factory Orders m/m
10:00 USD IBD/TIPP Economic Optimism

Confluence PowerZones	September Schatz Futures FGBSU20 Confluence Matrix										
	Pivots					Value Areas	Fibonacci Clusters	Volume Profile	Naked VPOC	Open Gaps	Prior Day Summary
	M	W	D	F	D						
112.470-112.475								◆			
112.390-112.395						◆	◆	◆			
112.315-112.320							◆	◆			
112.265-112.270											
112.195-112.200											
112.135-112.140			P	P	P	◆		◆			OPEN
112.090-112.095						◆		◆			
112.050-112.055						◆		◆			
112.025-112.030											
112.000-112.005							◆				
111.955-111.960								◆			
111.915-111.920											

iMap	CCI	MACD	STOC	RSI
------	-----	------	------	-----

5 Day Inter-Market Correl.						
%	EUR	USD	JPY	S&P	Oil	Gold
EUR		-97	-58	-8	23	44
USD	-97		64	11	-23	-47
JPY	-58	64		-2	6	-42
S&P	-8	11	-2		-11	1
Oil	23	-23	6	-11		27
Gold	44	-47	-42	1	27	

Open Gaps	
Jun 10	111.990



TPO/Vol. Value Areas		
Area	Volume	TPO
VAH	112.150	112.150
POC	112.135	112.140
VAL	112.130	112.120

Naked VPOCs	

COT Index	Large **	Comm. **
-----------	----------	----------

Trend	Short	Medium	Long
-------	-------	--------	------

10Y Note | Aug 04



tothetick™

Prior Day Summary

Open	140.16
High	140.17
Low	139.88
Close	140.00
Range	0.30

Fibonacci Clusters

141.06-141.09
140.78-140.81
140.03-140.06
139.88-139.91
139.75-139.78

Pivot Points

Monthly (M)	
R3	142.06
R2	141.12
R1	140.61
PP	139.67
S1	139.15
S2	138.22
S3	137.70

Weekly (W)

R3	141.37
R2	140.78
R1	140.43
PP	139.84
S1	139.49
S2	138.90
S3	138.55

Daily (D)

R3	140.46
R2	140.32
R1	140.16
PP	140.02
S1	139.87
S2	139.72
S3	139.57

Floor (F)

R3	140.46
R2	140.31
R1	140.16
PP	140.02
S1	139.87
S2	139.73
S3	139.58

DeMark (D)

R1	140.09
PP	139.98
S1	139.79

Key News (EST)

10:00 USD Factory Orders m/m
10:00 USD IBD/TIPP Economic Optimism

Confluence PowerZones

September10 Year Futures ZNU20 Confluence Matrix

	Pivots					Value Areas	Fibonacci Clusters	Volume Profile	Naked VPOC	Open Gaps	Prior Day Summary
	M	W	D	F	D						
141.06-141.09						◆	◆	◆			
140.78-140.81							◆				
140.64-140.67											
140.44-140.47				R3	R3						
140.19-140.22								◆			
140.05-140.08						◆	◆	◆			
139.88-139.91						◆	◆	◆			LOW
139.75-139.78							◆				
139.52-139.55											
139.25-139.28											
139.11-139.14						◆		◆			
138.98-139.02											

iMap

CCI

MACD

STOC

RSI

5 Day Inter-Market Correl.

%	EUR	USD	JPY	S&P	Oil	Gold
EUR		-97	-58	-8	23	44
USD	-97		64	11	-23	-47
JPY	-58	64		-2	6	-42
S&P	-8	11	-2		-11	1
Oil	23	-23	6	-11		27
Gold	44	-47	-42	1	27	

Open Gaps

Volume Profile



TPO/Vol. Value Areas

Area	Volume	TPO
VAH	140.03	140.08
POC	139.95	140.05
VAL	139.91	139.95

Naked VPOCs

Jul 29	139.80
Jul 28	139.69
Jul 27	139.44

COT Index

Large 0%

Comm. 100%

Trend

Short

Medium

Long



Prior Day Summary		Fibonacci Clusters
Open	126.17	126.67-126.70
High	126.17	126.19-126.22
Low	126.05	125.88-125.91
Close	126.10	125.80-125.83
Range	0.12	125.62-125.65
Key News (EST)		10:00 USD Factory Orders m/m
		10:00 USD IBD/TIPP Economic Optimism

Pivot Points	
Monthly (M)	
R3	127.00
R2	126.58
R1	126.36
PP	125.94
S1	125.72
S2	125.30
S3	125.08
Weekly (W)	
R3	126.76
R2	126.46
R1	126.30
PP	126.00
S1	125.84
S2	125.54
S3	125.38
Daily (D)	
R3	126.29
R2	126.23
R1	126.17
PP	126.11
S1	126.05
S2	125.99
S3	125.93
Floor (F)	
R3	126.29
R2	126.23
R1	126.17
PP	126.11
S1	126.05
S2	125.99
S3	125.93
DeMark (D)	
R1	126.14
PP	126.10
S1	126.02

Confluence PowerZones	September 5 Year Futures ZFU20 Confluence Matrix										
	Pivots					Value Areas	Fibonacci Clusters	Volume Profile	Naked VPOC	Open Gaps	Prior Day Summary
	M	W	D	F	D						
126.67-126.70							◆	◆			
126.56-126.59	R2										
126.41-126.45											
126.30-126.34											
126.16-126.20			R1	R1		◆	◆	◆			OPEN
126.05-126.08			S1	S1		◆		◆			LOW
125.98-126.01		PP	S2	S2				◆			
125.88-125.91							◆				
125.80-125.83							◆				
125.70-125.73	S1										
125.62-125.65						◆	◆	◆			
125.52-125.55		S2									

iMap	CCI	MACD	STOC	RSI
------	-----	------	------	-----

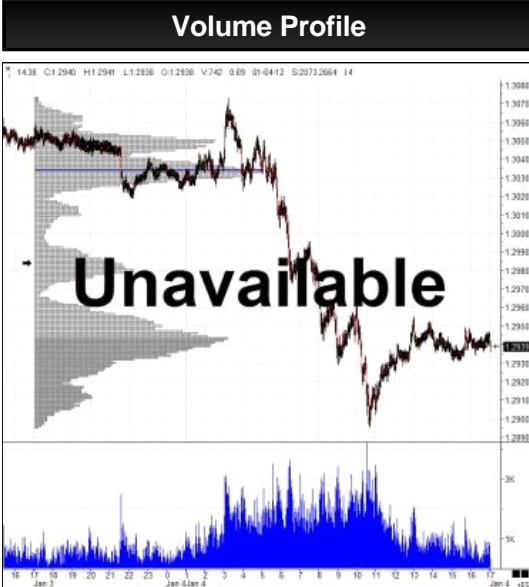
5 Day Inter-Market Correl.						
%	EUR	USD	JPY	S&P	Oil	Gold
EUR		-97	-58	-8	23	44
USD	-97		64	11	-23	-47
JPY	-58	64		-2	6	-42
S&P	-8	11	-2		-11	1
Oil	23	-23	6	-11		27
Gold	44	-47	-42	1	27	

Open Gaps	

TPO/Vol. Value Areas		
Area	Volume	TPO
VAH	126.13	126.12
POC	126.12	126.05
VAL	126.05	126.05

DAILY

Naked VPOCs	
Jul 30	125.94
Jul 29	125.85
Jun 24	125.47



COT Index	Large 0%	Comm. 100%	Trend	Short	Medium	Long
-----------	----------	------------	-------	-------	--------	------



Prior Day Summary		Fibonacci Clusters	
Open	182.41	186.44-186.50	
High	182.53	183.56-183.63	
Low	181.28	182.13-182.19	
Close	181.72	181.28-181.34	
Range	1.25	179.44-179.50	

Key News (EST)	10:00 USD Factory Orders m/m
	10:00 USD IBD/TIPP Economic Optimism

Pivot Points	
Monthly (M)	
R3	189.96
R2	186.38
R1	184.33
PP	180.76
S1	178.71
S2	175.14
S3	173.08

Weekly (W)	
R3	186.30
R2	184.56
R1	183.42
PP	181.68
S1	180.55
S2	178.80
S3	177.68

Daily (D)	
R3	183.65
R2	183.09
R1	182.40
PP	181.84
S1	181.15
S2	180.59
S3	179.90

Confluence PowerZones	September 30 Year Futures ZBU20 Confluence Matrix										
	Pivots					Value Areas	Fibonacci Clusters	Volume Profile	Naked VPOC	Open Gaps	Prior Day Summary
	M	W	D	F	D						
186.44-186.50							◆	◆			
184.59-184.66								◆			
183.56-183.63							◆				
182.97-183.03						◆					
182.59-182.66						◆					
181.94-182.00						◆					
181.25-181.31							◆	◆			LOW
180.78-180.84								◆			
180.34-180.41											
179.88-179.94			S3	S3		◆					
179.44-179.50							◆				
178.94-179.00											

iMap	CCI	MACD	STOC	RSI
------	-----	------	------	-----

5 Day Inter-Market Correl.						
%	EUR	USD	JPY	S&P	Oil	Gold
EUR		-97	-58	-8	23	44
USD	-97		64	11	-23	-47
JPY	-58	64		-2	6	-42
S&P	-8	11	-2		-11	1
Oil	23	-23	6	-11		27
Gold	44	-47	-42	1	27	

Open Gaps	

TPO/Vol. Value Areas		
Area	Volume	TPO
VAH	182.63	182.78
POC	182.31	182.28
VAL	181.97	182.09

DAILY

Naked VPOCs	
Jul 28	180.50
Jul 07	178.25
Jul 06	177.72
Jun 24	176.66



Floor (F)	
R3	183.78
R2	183.09
R1	182.40
PP	181.84
S1	181.15
S2	180.59
S3	179.90

DeMark (D)	
R1	182.12
PP	181.70
S1	180.88

COT Index	Large 15%	Comm. 94%	Trend	Short	Medium	Long
-----------	-----------	-----------	-------	-------	--------	------

Corn | Aug 04

Prior Day Summary

Open	315.00
High	318.25
Low	315.00
Close	317.50
Range	3.25

Fibonacci Clusters

325.25-325.75
323.00-323.50
320.00-320.50
309.00-309.50
305.25-305.75

Pivot Points

Monthly (M)	
R3	383.00
R2	369.00
R1	342.50
PP	328.50
S1	302.00
S2	288.00
S3	261.50

Weekly (W)

R3	337.16
R2	332.33
R1	324.16
PP	319.33
S1	311.16
S2	306.33
S3	298.16

Daily (D)

R3	322.09
R2	320.17
R1	318.84
PP	316.92
S1	315.59
S2	313.67
S3	312.34

Floor (F)

R3	321.50
R2	320.17
R1	318.84
PP	316.92
S1	315.59
S2	313.67
S3	312.34

DeMark (D)

R1	319.50
PP	317.25
S1	316.25

Key News (EST)

10:00 USD Factory Orders m/m
10:00 USD IBD/TIPP Economic Optimism

Confluence PowerZones

September Corn Futures ZCU20 Confluence Matrix

	Pivots					Value Areas	Fibonacci Clusters	Volume Profile	Naked VPOC	Open Gaps	Prior Day Summary
	M	W	D	F	D						
332.75-333.25								◆			
329.00-329.50											
325.25-325.75							◆				
323.00-323.50							◆				
319.50-320.00					R1	◆	◆	◆			
317.75-318.25						◆		◆			HIGH
314.50-315.00											OPEN
312.25-312.75			S3	S3							
309.00-309.50							◆				
305.25-305.75						◆	◆	◆			
301.00-301.50						◆		◆			
298.25-298.75											

iMap

CCI

MACD

STOC

RSI

5 Day Inter-Market Correl.

%	EUR	USD	JPY	S&P	Oil	Gold
EUR		-97	-58	-8	23	44
USD	-97		64	11	-23	-47
JPY	-58	64		-2	6	-42
S&P	-8	11	-2		-11	1
Oil	23	-23	6	-11		27
Gold	44	-47	-42	1	27	

Open Gaps

Jul 26	324.75
Jul 09	337.50

Volume Profile



TPO/Vol. Value Areas

Area	Volume	TPO
VAH	317.25	317.25
POC	316.75	316.75
VAL	316.25	316.25

Naked VPOCs

Jul 28	320.25
Jul 27	322.25
Jul 26	325.00
Jul 23	327.75

COT Index

Large 24%

Comm. 76%

Trend

Short

Medium

Long

Soybeans | Aug 04



Prior Day Summary

Open	892.50
High	899.75
Low	891.25
Close	896.25
Range	8.50

Fibonacci Clusters

916.00-917.00
909.50-910.50
892.00-893.00
888.50-889.50
884.00-885.00

Pivot Points

Monthly (M)	
R3	953.84
R2	933.17
R1	912.84
PP	892.17
S1	871.84
S2	851.17
S3	830.84

Key News (EST)

10:00 USD Factory Orders m/m
10:00 USD IBD/TIPP Economic Optimism

Weekly (W)

R3	926.91
R2	915.33
R1	903.91
PP	892.33
S1	880.91
S2	869.33
S3	857.91

Daily (D)

R3	908.75
R2	904.25
R1	900.25
PP	895.75
S1	891.75
S2	887.25
S3	883.25

Floor (F)

R3	908.25
R2	904.25
R1	900.25
PP	895.75
S1	891.75
S2	887.25
S3	883.25

DeMark (D)

R1	902.25
PP	896.75
S1	893.75

Confluence PowerZones

November Soybeans Futures ZSX20 Confluence Matrix

	Pivots					Value Areas	Fibonacci Clusters	Volume Profile	Naked VPOC	Open Gaps	Prior Day Summary
	M	W	D	F	D						
926.50-927.50		R3						◆			
920.75-921.75											
916.00-917.00							◆				
909.50-910.50							◆				
903.50-904.50		R1	R2	R2		◆		◆			
897.50-898.50						◆		◆			
892.75-893.75					S1		◆				
889.50-890.50							◆				
884.75-885.75							◆		Jul 29		
880.75-881.75		S1				◆		◆			
876.00-877.00						◆		◆			
871.50-872.50	S1										

iMap

CCI

MACD

STOC

RSI

5 Day Inter-Market Correl.

%	EUR	USD	JPY	S&P	Oil	Gold
EUR		-97	-58	-8	23	44
USD	-97		64	11	-23	-47
JPY	-58	64		-2	6	-42
S&P	-8	11	-2		-11	1
Oil	23	-23	6	-11		27
Gold	44	-47	-42	1	27	

Open Gaps

Jul 29	888.25
Jul 26	900.00

Volume Profile



TPO/Vol. Value Areas

Area		Volume	TPO
DAILY	VAH	897.50	899.00
	POC	895.00	898.00
	VAL	894.50	895.00

Naked VPOCs

Jul 29	885.00
Jul 26	900.25
Jul 14	880.50
Jun 29	862.00

COT Index

Large 64%

Comm. 46%

Trend

Short

Medium

Long



Gold | Aug 04



Prior Day Summary

Open	1997.4
High	2009.5
Low	1975.2
Close	1991.0
Range	34.3

Fibonacci Clusters

2055.2-2056.7
2043.5-2045.0
1994.4-1995.9
1987.1-1988.6
1924.1-1925.6

Pivot Points

Monthly (M)	
R3	2278.6
R2	2142.0
R1	2064.0
PP	1927.4
S1	1849.4
S2	1712.8
S3	1634.8

Weekly (W)

R3	2101.6
R2	2053.5
R1	2019.7
PP	1971.6
S1	1937.8
S2	1889.7
S3	1855.9

Daily (D)

R3	2042.9
R2	2026.2
R1	2008.6
PP	1991.9
S1	1974.3
S2	1957.6
S3	1940.0

Floor (F)

R3	2043.8
R2	2026.2
R1	2008.6
PP	1991.9
S1	1974.3
S2	1957.6
S3	1940.0

DeMark (D)

R1	2000.2
PP	1987.7
S1	1966.0

Key News (EST)

10:00 USD Factory Orders m/m
10:00 USD IBD/TIPP Economic Optimism



Confluence PowerZones

Gold December Futures GCZ20 Confluence Matrix

	Pivots					Value Areas	Fibonacci Clusters	Volume Profile	Naked VPOC	Open Gaps	Prior Day Summary
	M	W	D	F	D						
2055.2-2056.7							◆				
2043.5-2045.0				R3			◆				
2033.3-2034.8								◆			
2020.0-2021.5						◆		◆			
2005.8-2007.3						◆		◆			
1993.1-1994.6							◆				
1981.0-1982.5						◆					
1974.0-1975.5			S1	S1				◆			LOW
1963.0-1964.5						◆		◆			
1953.9-1955.4						◆		◆			
1940.9-1942.4											
1924.1-1925.6							◆				

iMap

CCI

MACD

STOC

RSI

5 Day Inter-Market Correl.

%	EUR	USD	JPY	S&P	Oil	Gold
EUR		-97	-58	-8	23	44
USD	-97		64	11	-23	-47
JPY	-58	64		-2	6	-42
S&P	-8	11	-2		-11	1
Oil	23	-23	6	-11		27
Gold	44	-47	-42	1	27	

Open Gaps

Jul 30	1966.3
Jul 24	1921.9
Jul 23	1914.4
Jul 22	1888.8

Volume Profile



TPO/Vol. Value Areas

Area	Volume	TPO
VAH	1989.6	1988.0
POC	1984.4	1985.4
VAL	1982.2	1981.6

Naked VPOCs

Jul 30	1966.5
Jul 24	1921.8
Jul 23	1914.1
Jul 22	1882.3

COT Index

Large 27%**

Comm. 67%

Trend

Short

Medium

Long



Crude Oil | Aug 04

Prior Day Summary

Open	40.39
High	41.24
Low	39.58
Close	40.76
Range	1.66

Fibonacci Clusters

43.15-43.25
41.82-41.92
39.49-39.59
38.17-38.27
37.59-37.69

Pivot Points

Monthly (M)	
R3	46.07
R2	44.29
R1	42.28
PP	40.50
S1	38.49
S2	36.71
S3	34.70

Weekly (W)

R3	45.11
R2	43.52
R1	41.90
PP	40.31
S1	38.69
S2	37.10
S3	35.48

Daily (D)

R3	43.14
R2	42.19
R1	41.48
PP	40.53
S1	39.82
S2	38.87
S3	38.16

Floor (F)

R3	42.90
R2	42.19
R1	41.48
PP	40.53
S1	39.82
S2	38.87
S3	38.16

DeMark (D)

R1	41.83
PP	40.70
S1	40.17

Key News (EST)

10:00 USD Factory Orders m/m
10:00 USD IBD/TIPP Economic Optimism



Confluence PowerZones

Crude Oil September Futures CLU20 Confluence Matrix

	Pivots					Value Areas	Fibonacci Clusters	Volume Profile	Naked VPOC	Open Gaps	Prior Day Summary
	M	W	D	F	D						
43.82-43.92						◆		◆			
43.15-43.25							◆	◆			
42.46-42.56											
41.82-41.92		R1			R1		◆				
41.20-41.30						◆		◆	Jul 29	Jul 29	HIGH
40.52-40.62			PP	PP		◆		◆			
40.04-40.14						◆		◆			
39.49-39.59							◆				LOW
38.70-38.80											
38.17-38.27							◆	◆			
37.59-37.69							◆	◆			
37.05-37.15	S2										

iMap

CCI

MACD

STOC

RSI

5 Day Inter-Market Correl.

%	EUR	USD	JPY	S&P	Oil	Gold
EUR		-97	-58	-8	23	44
USD	-97		64	11	-23	-47
JPY	-58	64		-2	6	-42
S&P	-8	11	-2		-11	1
Oil	23	-23	6	-11		27
Gold	44	-47	-42	1	27	

Open Gaps

Jul 29	41.28
Jul 27	41.61

Volume Profile



TPO/Vol. Value Areas

Area	Volume	TPO
VAH	41.21	41.24
POC	41.08	41.02
VAL	40.68	40.72

Naked VPOCs

Jul 31	39.89
Jul 29	41.27
Jul 21	42.20
Jun 26	38.46

COT Index

Large 100%**

Comm. 0%

Trend

Short

Medium

Long



S&P 500 | Aug 04

Prior Day Summary

Open	3272.00
High	3295.50
Low	3254.75
Close	3288.25
Range	40.75

Fibonacci Clusters

3327.75-3330.75
3314.50-3317.50
3256.00-3259.00
3243.50-3246.50
3229.25-3232.25

Pivot Points

Monthly (M)	
R3	3566.16
R2	3425.33
R1	3344.41
PP	3203.58
S1	3122.66
S2	2981.83
S3	2900.91

Weekly (W)

R3	3375.91
R2	3324.83
R1	3294.16
PP	3243.08
S1	3212.41
S2	3161.33
S3	3130.66

Daily (D)

R3	3345.00
R2	3320.25
R1	3304.25
PP	3279.50
S1	3263.50
S2	3238.75
S3	3222.75

Floor (F)

R3	3336.25
R2	3320.25
R1	3304.25
PP	3279.50
S1	3263.50
S2	3238.75
S3	3222.75

DeMark (D)

R1	3312.25
PP	3283.50
S1	3271.50

Key News (EST)

10:00 USD Factory Orders m/m
10:00 USD IBD/TIPP Economic Optimism

Confluence PowerZones

September S&P 500 Futures ESU20 Confluence Matrix

	Pivots					Value Areas	Fibonacci Clusters	Volume Profile	Naked VPOC	Open Gaps	Prior Day Summary
	M	W	D	F	D						
3339.00-3342.00						◆		◆			
3327.75-3330.75							◆	◆			
3314.50-3317.50							◆	◆			
3303.00-3306.00			R1	R1							
3295.00-3298.00											HIGH
3282.00-3285.00					PP	◆		◆			
3273.25-3276.25						◆		◆			
3255.50-3258.50							◆	◆			
3242.00-3245.00		PP					◆				
3229.25-3232.25							◆				
3211.00-3214.00		S1						◆			
3194.00-3197.00											

iMap

CCI

MACD

STOC

RSI

5 Day Inter-Market Correl.

%	EUR	USD	JPY	S&P	Oil	Gold
EUR		-97	-58	-8	23	44
USD	-97		64	11	-23	-47
JPY	-58	64		-2	6	-42
S&P	-8	11	-2		-11	1
Oil	23	-23	6	-11		27
Gold	44	-47	-42	1	27	

Open Gaps

Jul 31	3263.75
Jul 14	3183.25
Jul 01	3102.50
Jun 30	3083.25

Volume Profile



TPO/Vol. Value Areas

Area	Volume	TPO
VAH	3292.25	3293.00
POC	3288.75	3288.50
VAL	3285.00	3284.50

Naked VPOCs

Jul 31	3227.00
Jul 14	3155.50
Jul 01	3103.50
Jun 30	3068.50

COT Index

Large 53%**

Comm 39%

Trend

Short

Medium

Long





Prior Day Summary		Fibonacci Clusters	
Open	10933.25	11273.00-11283.00	
High	11073.00	10927.00-10937.00	
Low	10876.25	10824.00-10834.00	
Close	11046.75	10761.50-10771.50	
Range	196.75	10448.75-10458.75	

Key News (EST)	10:00 USD Factory Orders m/m
	10:00 USD IBD/TIPP Economic Optimism

Pivot Points	
Monthly (M)	
R3	12256.50
R2	11657.50
R1	11274.00
PP	10675.00
S1	10291.50
S2	9692.50
S3	9309.00

Weekly (W)	
R3	11624.00
R2	11281.50
R1	11086.00
PP	10743.50
S1	10548.00
S2	10205.50
S3	10010.00

Daily (D)	
R3	11317.84
R2	11195.42
R1	11121.09
PP	10998.67
S1	10924.34
S2	10801.92
S3	10727.59

Floor (F)	
R3	11269.75
R2	11195.42
R1	11121.09
PP	10998.67
S1	10924.34
S2	10801.92
S3	10727.59

DeMark (D)	
R1	11158.25
PP	11017.25
S1	10961.50

Confluence PowerZones	September Nasdaq Futures NQU20 Confluence Matrix										
	Pivots					Value Areas	Fibonacci Clusters	Volume Profile	Naked VPOC	Open Gaps	Prior Day Summary
	M	W	D	F	D						
11388.75-11398.75											
11322.25-11332.25								◆			
11273.00-11283.00	R1	R2					◆	◆			
11202.50-11212.50						◆		◆			
11149.00-11159.00					R1	◆					
11065.25-11075.25										HIGH	
10986.25-10996.25								◆			
10927.00-10937.00							◆	◆		OPEN	
10824.00-10834.00						◆	◆	◆			
10761.50-10771.50						◆	◆		Jul 31		
10687.25-10697.25											
10617.00-10627.00											

iMap	CCI	MACD	STOC	RSI
------	-----	------	------	-----

5 Day Inter-Market Correl.						
%	EUR	USD	JPY	S&P	Oil	Gold
EUR		-97	-58	-8	23	44
USD	-97		64	11	-23	-47
JPY	-58	64		-2	6	-42
S&P	-8	11	-2		-11	1
Oil	23	-23	6	-11		27
Gold	44	-47	-42	1	27	

Open Gaps	
Jul 31	10903.50
Jul 24	10457.75
Jul 01	10266.75



TPO/Vol. Value Areas		
Area	Volume	TPO
VAH	11055.75	11057.00
POC	11042.00	11036.50

Naked VPOCs	
Jul 31	10763.25
Jul 24	10474.25
Jul 01	10261.50

Dow Jones | Aug 04



Prior Day Summary

Open	26400
High	26603
Low	26197
Close	26559
Range	406

Fibonacci Clusters

27048-27068
26927-26947
26835-26855
26411-26431
26292-26312

Pivot Points

Monthly (M)	
R3	28927
R2	27995
R1	27157
PP	26225
S1	25387
S2	24455
S3	23617

Key News (EST)

10:00 USD Factory Orders m/m
10:00 USD IBD/TIPP Economic Optimism

Weekly (W)	
R3	27369
R2	26984
R1	26651
PP	26266
S1	25933
S2	25548
S3	25215

Confluence PowerZones	September Dow Jones Futures YMU20 Confluence Matrix										
	Pivots					Value Areas	Fibonacci Clusters	Volume Profile	Naked VPOC	Open Gaps	Prior Day Summary
	M	W	D	F	D						
27184-27204						◆		◆			
27048-27068							◆				
26927-26947							◆				
26835-26855							◆				
26713-26733								◆			
26595-26615						◆		◆			HIGH
26489-26509					PP			◆			
26411-26431							◆				
26292-26312			S1	S1			◆				
26144-26164											
26039-26059			S2	S2		◆		◆			
25880-25900			S3	S3							

Daily (D)	
R3	27115
R2	26859
R1	26709
PP	26453
S1	26303
S2	26047
S3	25897

iMap

CCI

MACD

STOC

RSI

5 Day Inter-Market Correl.						
%	EUR	USD	JPY	S&P	Oil	Gold
EUR		-97	-58	-8	23	44
USD	-97		64	11	-23	-47
JPY	-58	64		-2	6	-42
S&P	-8	11	-2		-11	1
Oil	23	-23	6	-11		27
Gold	44	-47	-42	1	27	

Open Gaps	
Jul 31	26329
Jul 22	26889
Jun 26	24959
Jun 08	27415



Floor (F)	
R3	27009
R2	26859
R1	26709
PP	26453
S1	26303
S2	26047
S3	25897

TPO/Vol. Value Areas		
Area	Volume	TPO
VAH	26590	26589
POC	26541	26541
VAL	26517	26513

DAILY

Naked VPOCs	
Jul 31	26034
Jul 29	26362
Jul 23	26789
Jul 10	25756

DeMark (D)	
R1	26784
PP	26490
S1	26378

COT Index

Large 77%**

Comm. 18%

Trend

Short

Medium

Long



Russell | Aug 04



Prior Day Summary

Open	1479.2
High	1504.8
Low	1467.8
Close	1502.1
Range	37.0

Fibonacci Clusters

1524.2-1526.2
1512.4-1514.4
1467.8-1469.8
1458.6-1460.6
1417.2-1419.2

Pivot Points

Monthly (M)	
R3	1666.3
R2	1586.9
R1	1532.4
PP	1453.0
S1	1398.5
S2	1319.1
S3	1264.6

Key News (EST)

10:00 USD Factory Orders m/m
10:00 USD IBD/TIPP Economic Optimism

Weekly (W)

R3	1549.9
R2	1524.8
R1	1501.3
PP	1476.2
S1	1452.7
S2	1427.6
S3	1404.1

Daily (D)

R3	1552.4
R2	1528.6
R1	1515.4
PP	1491.6
S1	1478.4
S2	1454.6
S3	1441.4

Floor (F)

R3	1541.8
R2	1528.6
R1	1515.4
PP	1491.6
S1	1478.4
S2	1454.6
S3	1441.4

DeMark (D)

R1	1522.0
PP	1494.9
S1	1485.0

Confluence PowerZones

September Russell 2000 Futures RTYU20 Confluence Matrix

	Pivots					Value Areas	Fibonacci Clusters	Volume Profile	Naked VPOC	Open Gaps	Prior Day Summary
	M	W	D	F	D						
1524.2-1526.2		R2				◆	◆	◆			
1512.4-1514.4						◆	◆	◆			
1503.8-1505.8								◆			HIGH
1490.1-1492.1			PP	PP							
1476.6-1478.6			S1	S1							
1467.8-1469.8							◆	◆			LOW
1458.6-1460.6						◆	◆	◆			
1450.2-1452.2						◆		◆			
1440.7-1442.7			S3	S3							
1429.6-1431.6									Jul 14		
1417.2-1419.2							◆	◆			
1403.8-1405.8		S3									

iMap

CCI

MACD

STOC

RSI

5 Day Inter-Market Correl.

%	EUR	USD	JPY	S&P	Oil	Gold
EUR		-97	-58	-8	23	44
USD	-97		64	11	-23	-47
JPY	-58	64		-2	6	-42
S&P	-8	11	-2		-11	1
Oil	23	-23	6	-11		27
Gold	44	-47	-42	1	27	

Open Gaps

Jul 14	1419.6
Jun 08	1534.2

Naked VPOCs

Jul 15	1412.5
Jul 14	1430.4

Volume Profile



TPO/Vol. Value Areas

Area	Volume	TPO
VAH	1470.9	1471.0
POC	1467.7	1465.4
VAL	1452.1	1453.8

COT Index

Large 99%**

Comm. 0%

Trend

Short

Medium

Long

