

## **BMA-OA (Green AH - Afi Hdt)**

Afi Hdt, [26/04/17 21:55]

For the beginning we start from the basic material used to make sequential basis for setting the indicator I understand we're all so I will begin immediately to its function

Discussions will go over a little bit so gradual or diffuse understanding

### **1. CHAPTER BB / bolinger band**

Bolinger band currently work to control prices for support and resistance moving BB there are three threads

BB 1.top

BB 2.mid

3.Low BB

Prices above mid mid BB BB means as support price below mid mid BB BB means as resistance

1.harga in the mid BB mean up trend

2.Price below the down trend means that BB mid Later we

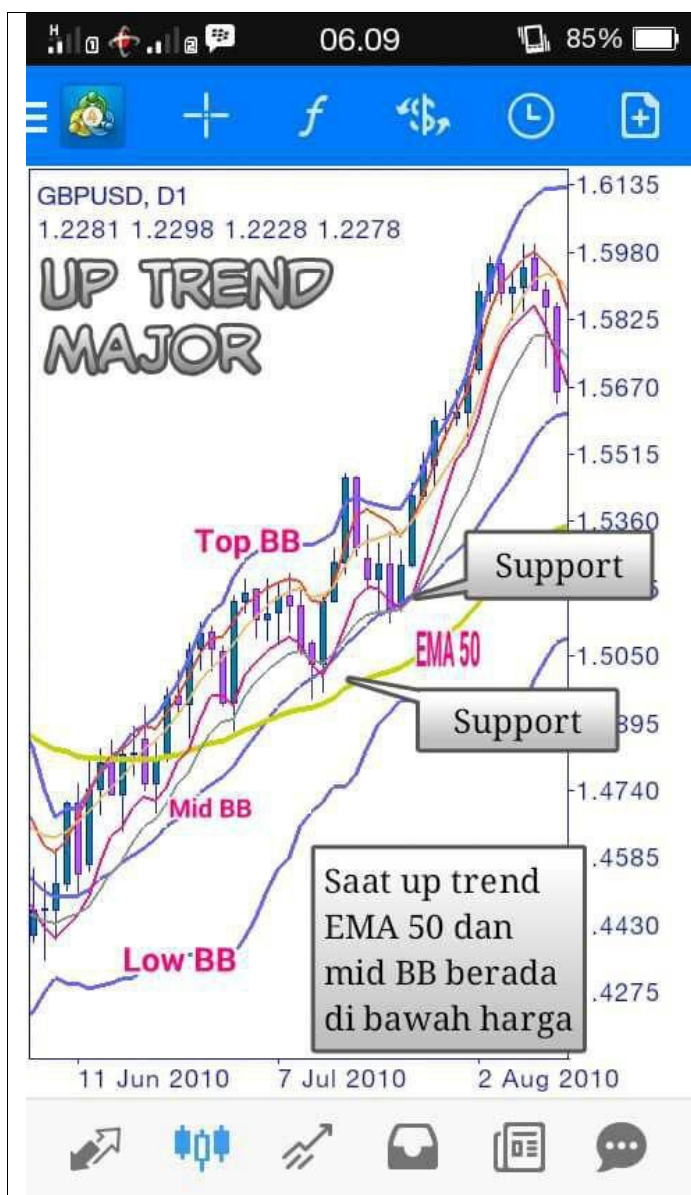
would catch up with SS

### **2. EMA50**

Functions the same as BB, EMA50 also serves to control the price If the price is above EMA50, meant

as support and UP TREND If the price below the 50 EMA as resistance and price bertri DOWN

TREND



### 3. Article MA5 + 10

Ma 5 + 10 the same function as the guardian of the minor price

When UP TREND candle stick price must be above or Ma 5 + 10 high and away from the low 5- + 10 And when the candle sticks DOWN TREND must or should be under a 5- + 10 and away from the 5- to 10 high +

Maksudnya away to make the distance, as the following example:



#### CHAPTER 4. CONDITIONS BB & MA5 + 10 EMA50

B there are three conditions

1. mendatar mark market Midway / correction
2. mengembang / admit menandakn price range or a large movement that called MOMENTUM
3. menguncup / tilt Menandakn large movement or momentum began REDA



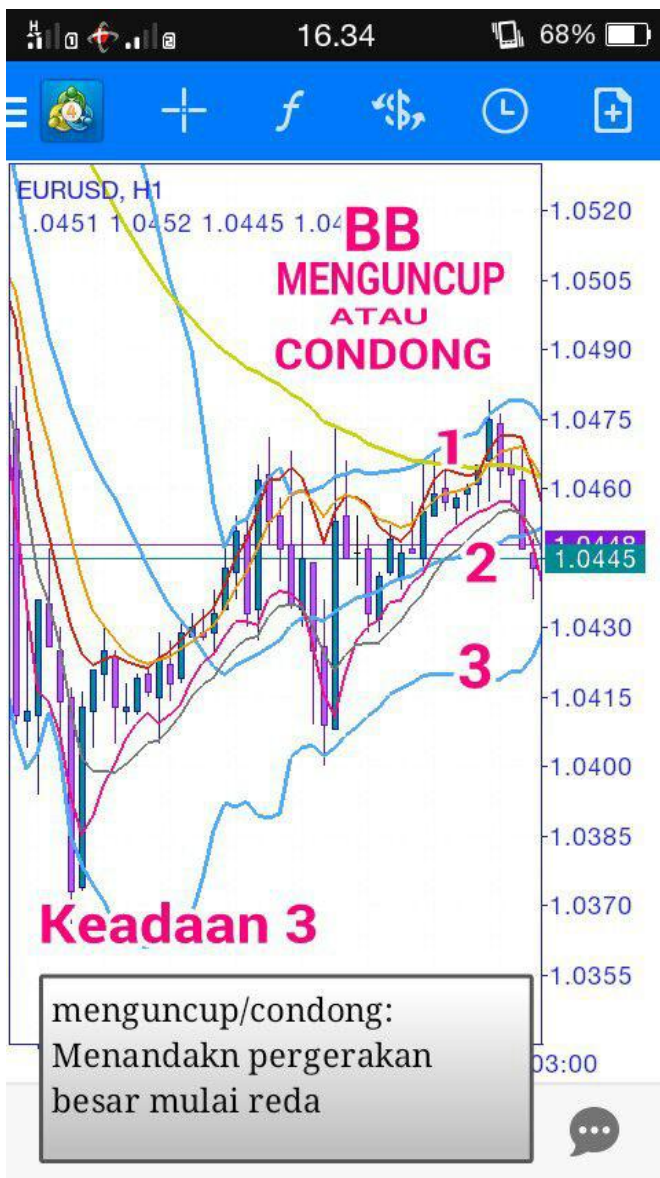
When BB will play the main horizontal price up and down

This is the situation like in wretchedness allow entry to setup extrem later we discussed in chapter entry



When BB expands mark huge movement in the circumstances of this nature in the setup extremely expensive entry will be discussed later in the chapter entry





The situation tends to contract or mark of the movement has subsided this situation can be for entry to the setup extrem in detail later in the chapter entry

## 5. CHAPTER MA and EMA50

Ema 50 will give us a situation change trend

### Characteristics:

In H4 on when EMA50 intersects the SMA20 (mid BB) indicates the market will create new trends and EMA50 valid in H4 upward direction menandakan functions for major trends in H1 to H4 below only reflect on

So we see the H4 on if tf beneath us it was just the opposite movement temporarily or pulback to confirm the setup of the TF

So if mid BB and EMA50 intersect or cross the first signs of a trend towards change

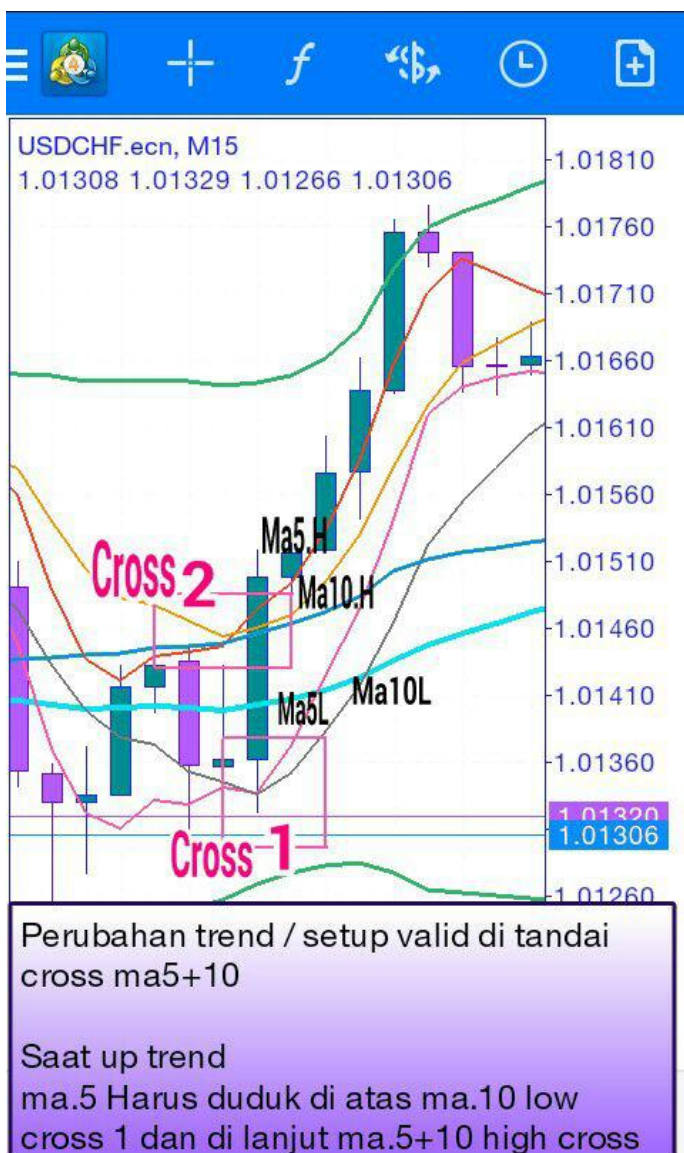
If the price is above mid BB and we focus EMA50 buy if the price is below the mid BB and sell EMA50 we focus on the H4 Mold



## 6. Article Cros ma 5 + 10

When the up trend began before EMA50 crossing with crossing mid BB there are minor trend is crossing a 5- + 10

Similarly, when down tend



When UP trend will see a 5- + 10 will be crossing that begins crossing a 5- to 10 low + 1 And the first sign of the cross berlanjut crossing 5- + 10 2 MA5 high cross sign will sit on the A10 after crossing

There are no signs or special features of cs that will show crossing 5- + 10 will cross if the setup has been formed extreme example was valid Mhv have been valid valid Reentey

So 5- + 10 will support the crossing sign

So we follow the BMA OA setup and sign as a reference only as EMA50 crossing 5- + 10 crossing

It was just marks it as a supporter setup So we follow up later and do not follow the sign

## summary

BB and MA50 functions to control the price and see the major trends in the H4 on 5- + 10 function at control

prices in B minor

There are 3 BB conditions:

1. Mendatar
2. mengembang / vertical
3. kuncup / tilt

EMA50 situation just crossing by mid BB to mark the beginning of a major change in a good / great in H4 to the top

## Kedaa Ma'5 + 10

Crossing seconds will change the direction of the minor in the BB Example 2  
seconds down trend similar understanding





When UP trend will begin cross from 5- + 10, low

Continues to trade places 5- to sit on the A10 and follow cs sits on a 5- + 10 high are currently down trend cross will start from 5- + 10

quality continues to trade places 5- to low sitting under ma 10 low and by cs sitting under a 5- + 10 low

## CHAPTER 7. SETUP

### Setup BMA

+ But shall 1.extrem

2.mhv

3. Candle direction

Cs 4.Reentry direction

5. Csm (candle sticks momentum)

CSM 6.reentry

So that's the setup sequence in the BMA after no.6 will end on extrem again

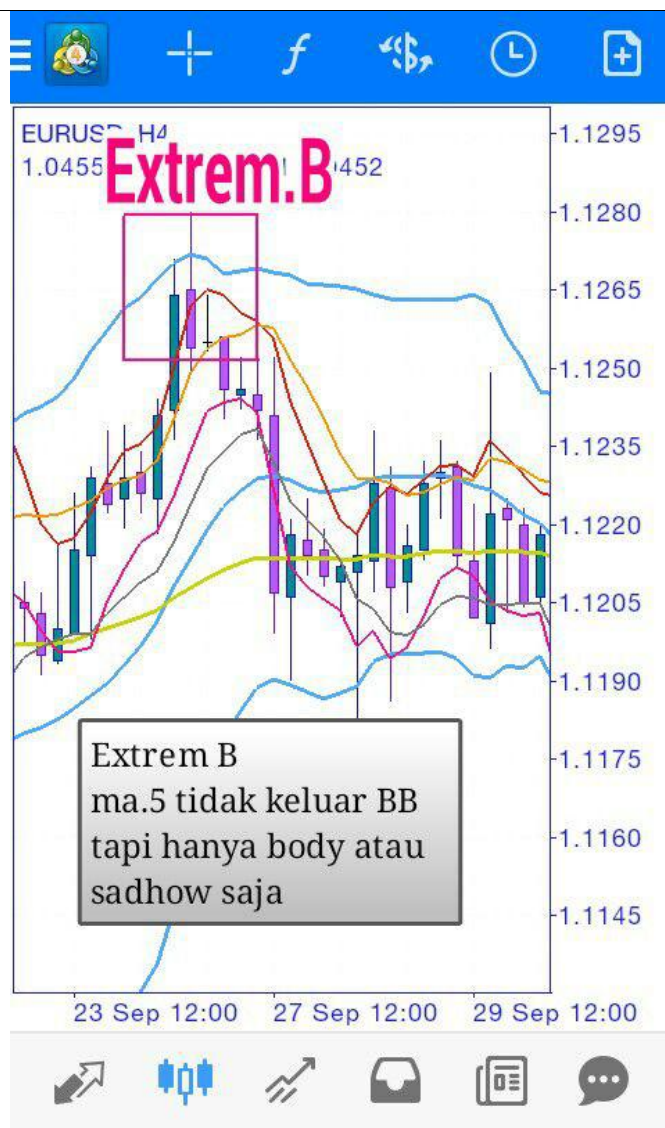
### 8. Article EXTREM

Feature exists MA 5 out Top / low weight at follow candle reverse (back) and retest candle (cs reverse 2nd)



This is basic extrem

In the form extrem 4, ABC and extrem Extrem MAGIC





### It ciri2 of bentuk2 extrem

And the most important thing for extrem entry only in two circumstances only BB  
horizontal 1.BB  
2.BB contracted / cindong

On the expensive entry in the circumstances when BB expand vertically or who menandakn strong momentum in expensive Why?

For in the circumstances momentum against the direction of our entry in the state .. In case of extreme vertical BB BB only makes the correction of vertical price alone is not a valid reverse or reverse direction .. So in an expensive entry in the TP bermomentum extrem extreme ma 5 + 10

Extrem magic usually make long distance make extrem TP when the price again



## 9. Article MHV

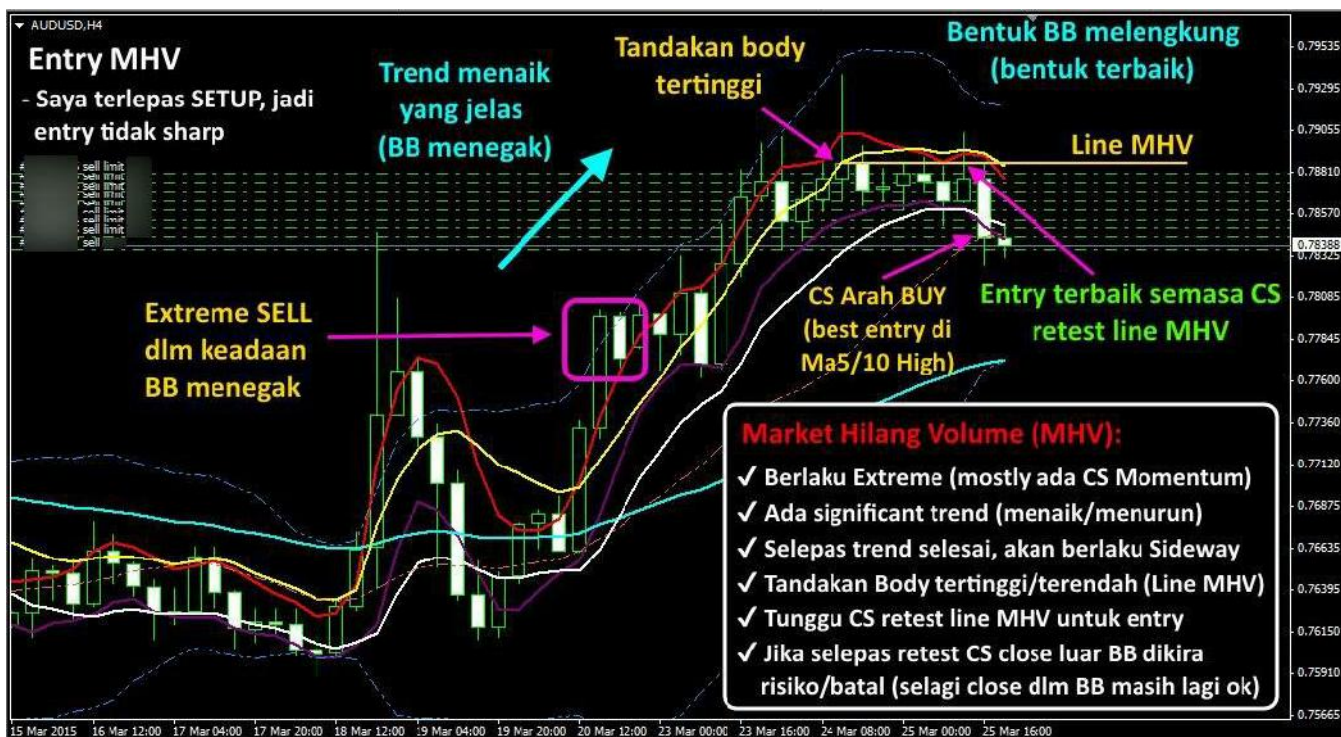
after compulsory but is extrem and MHV (market lost volume)

Mhv common after extreme price but do not try to retest or break top / low BB and reason it called MHV lose power



The situation should be similar to the extreme and reverse cs cs cs retest or reverse 2 for execution or OP





So cs OP in reverse to 2 TP

compulsory in mid May in the low BB

BB

MHV valid if there is extreme in small TF



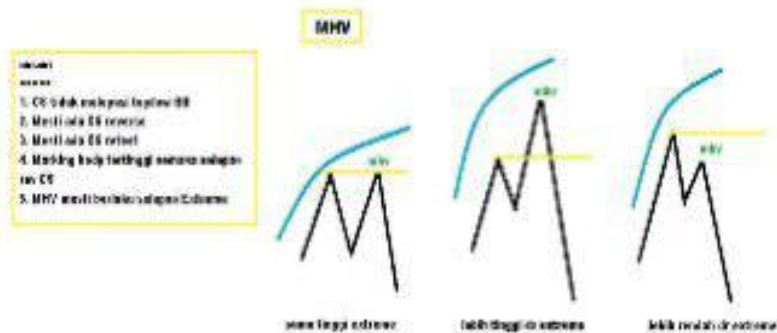
MHV there are three conditions

With extremely high 1.sama

2. More than extrem high

3. More than extremely low

# Macam macam bentuk MHV (Market Hilang Volume)







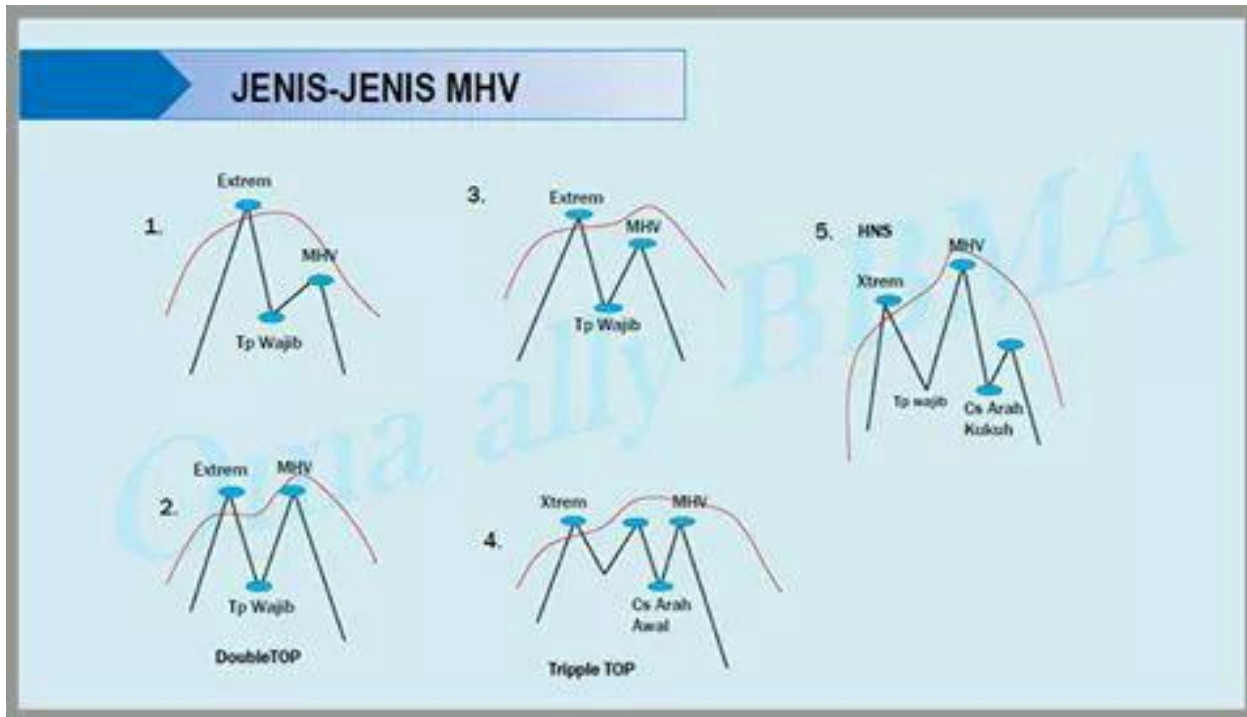
Basic 2016 an additional 2 cases

1.MHV HnS

3.MHV triple top

Basic common following three conditions above example

image around no4 and 5



Keep in mind our entry in cs cs reverse to retest or 2

After extreme price momentum does not continue to be a test after extrem wait for a reverse cs 1 see in TF small or not so extreme that there can be execution point is we see tf beneath sleepy valid mhv

Then we check the condition Mhv M15 H1 H4 When

we check in H1 bottom line

Monhly - weekly

Weekly - dayly dayly

- H4 H4 - H1 H1 -

M15 M15 - M5 M5 -

M1

It was his partner tf

We do not use M30 because the setup is similar to the H1's just different 2 cs



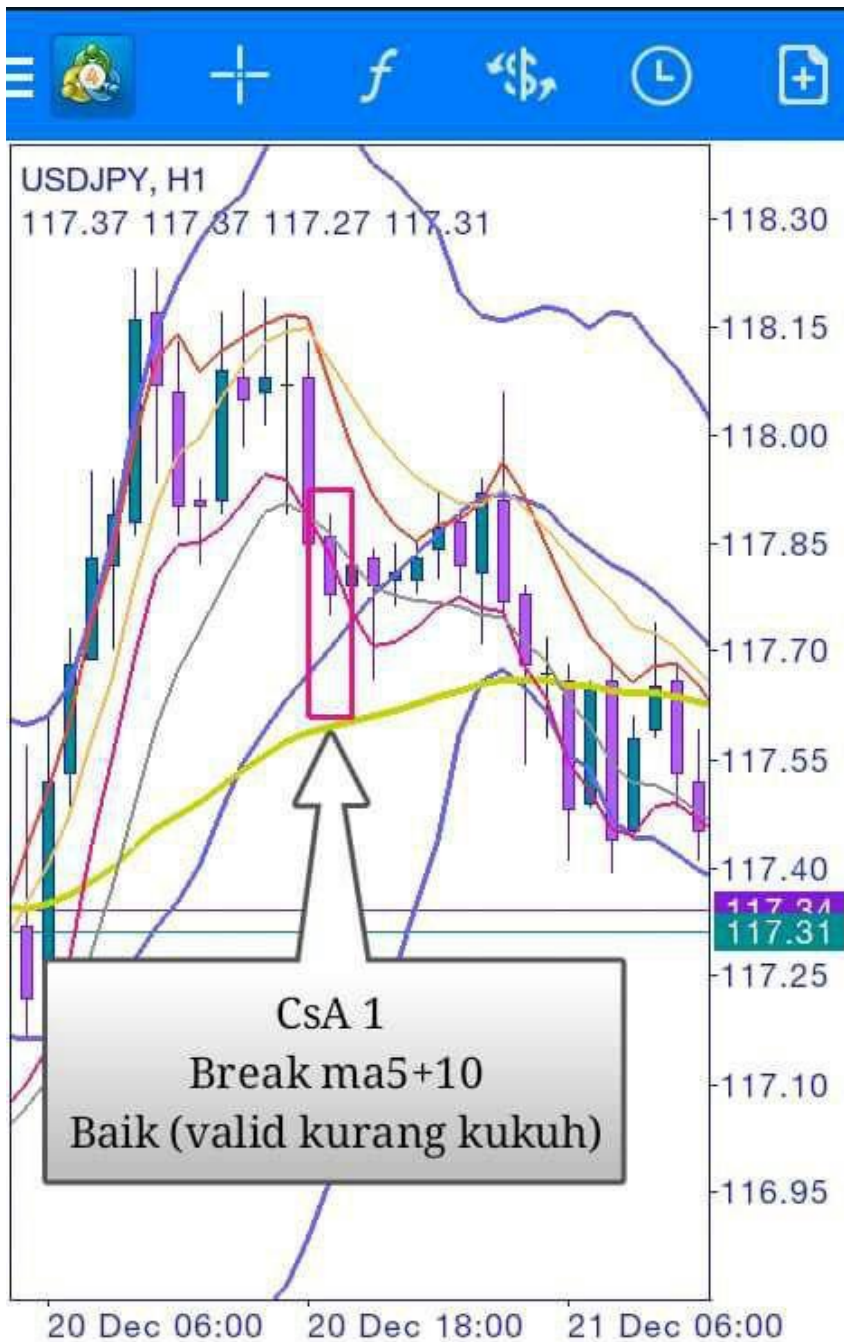
## 10. CHAPTER CS DIRECTION

Csa = candle stitch direction break ma 5 + 10 Valid but just not great

or less power as the signal Csa = candle sticks strong direction

Cs that break 5- + 10 and mid BB is valid and good or solid / solid Generally there are

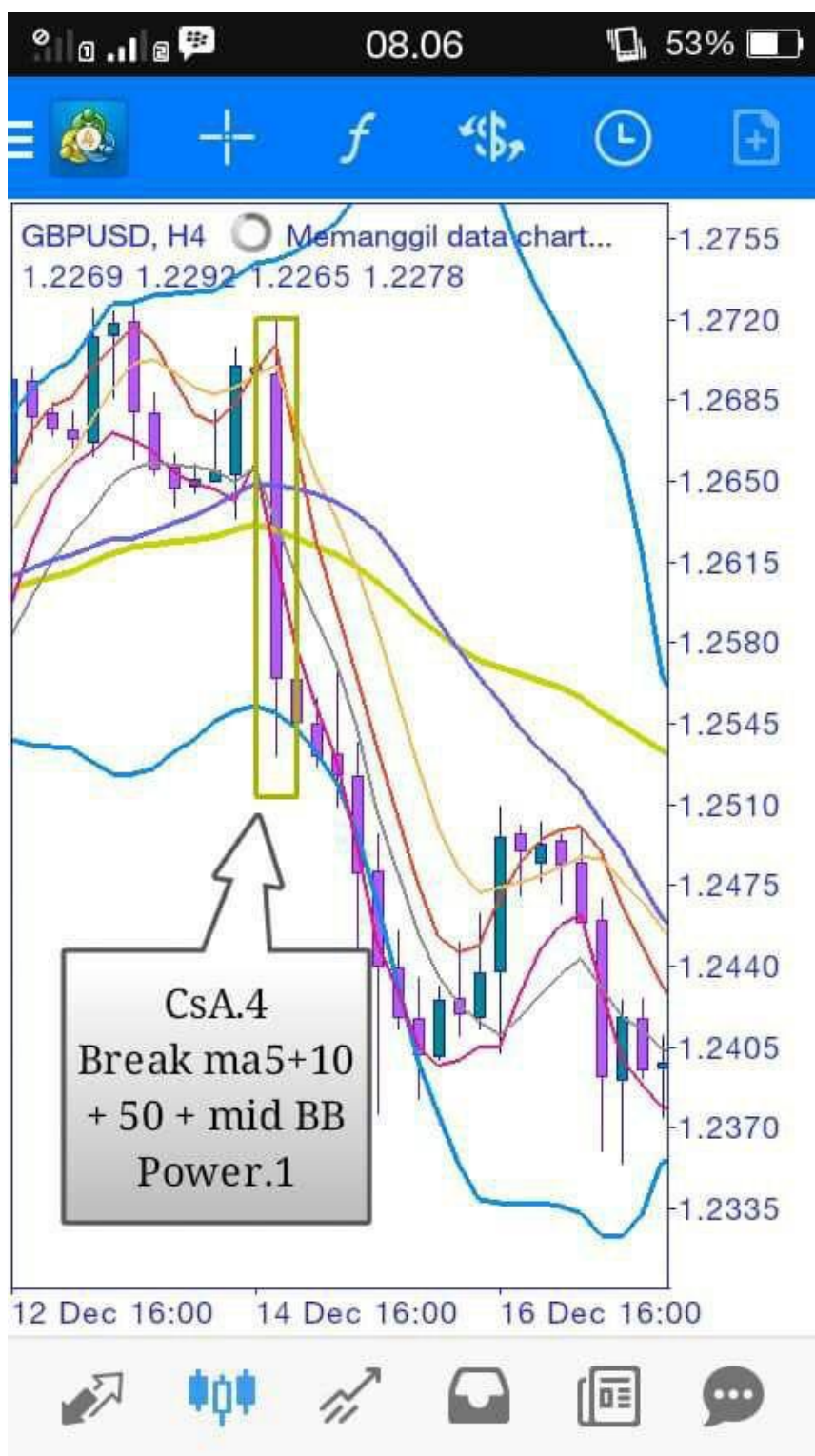
two basic forms but there are 5





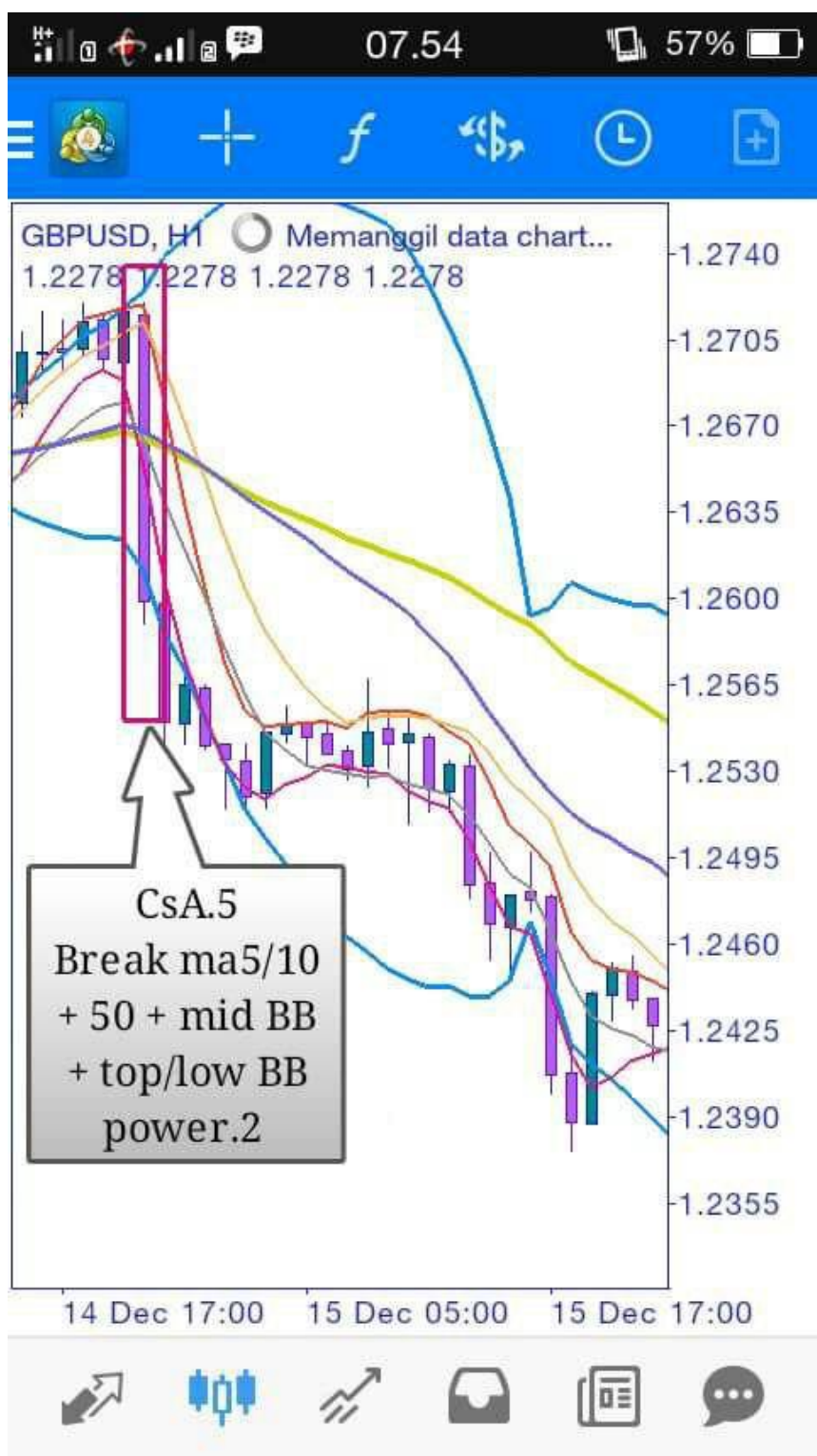


This Csa3 greater strength dr csa2 He break 5- +  
10 + midBB + top / low BB



Csa 4 break A.5 + 10 seconds mid BB BB intersects the mid signifies the power of movement or the movement of large So he strengthened the power 1





Last one cs direction break 5- + 10 mid BB EMA50 and top / low BB This cs-way power 2 because his strength exceeding csa4 And usually when the H4 there csa4 in H1 happen csa5 Cs This usually happens after MHV and immediately became cs direction As an example ss on csa4 terjad in H4 of mhv directly into cs direction and in H1 occurs directly into the direction of extrem

FUNCTION cs and directions here not for her entry only signals a trend change signal EXTREM reverse 1

MHV reverse signal 2

DIRECTION signal CS 3 that menvalidkan signal 1 & 2

## 11. Article CSM

CSM = cs ciri2 momentum candle sticks close out BB BB in an upright / expanded indicates strong movement



As an example of the SS

What needs to be noted CSM strength greater than Csak so do the opponents therefore prohibited entry when there is extreme in the current BB vertical or momentum (CSM) CSM is a trend which is actually in the BMA OA Sitting means he moves beyond top / Furthermore, low BB CHAPTER Csak null and invalid Csak vALID

If in great shape TF csak and began to break mid TF BB in small or below to form CSM



Csak valid in H1 H4 terjadi CSM Csak  
CANCEL



if in great shape TF cs direction and began to break mid BB in TF small form EXTREM then Csak CANCEL



## CHAPTER 12. Reentry

Reentry there are two places

- 1.reentry after csak
- 2.reentry after CSM

Reentry here is the name of the setup in the BMA and the entry point of reentry is that we wait

for entry and reentry is the survivor entry there are 3 conditions

- 1.Reentry reject a 5- / 10



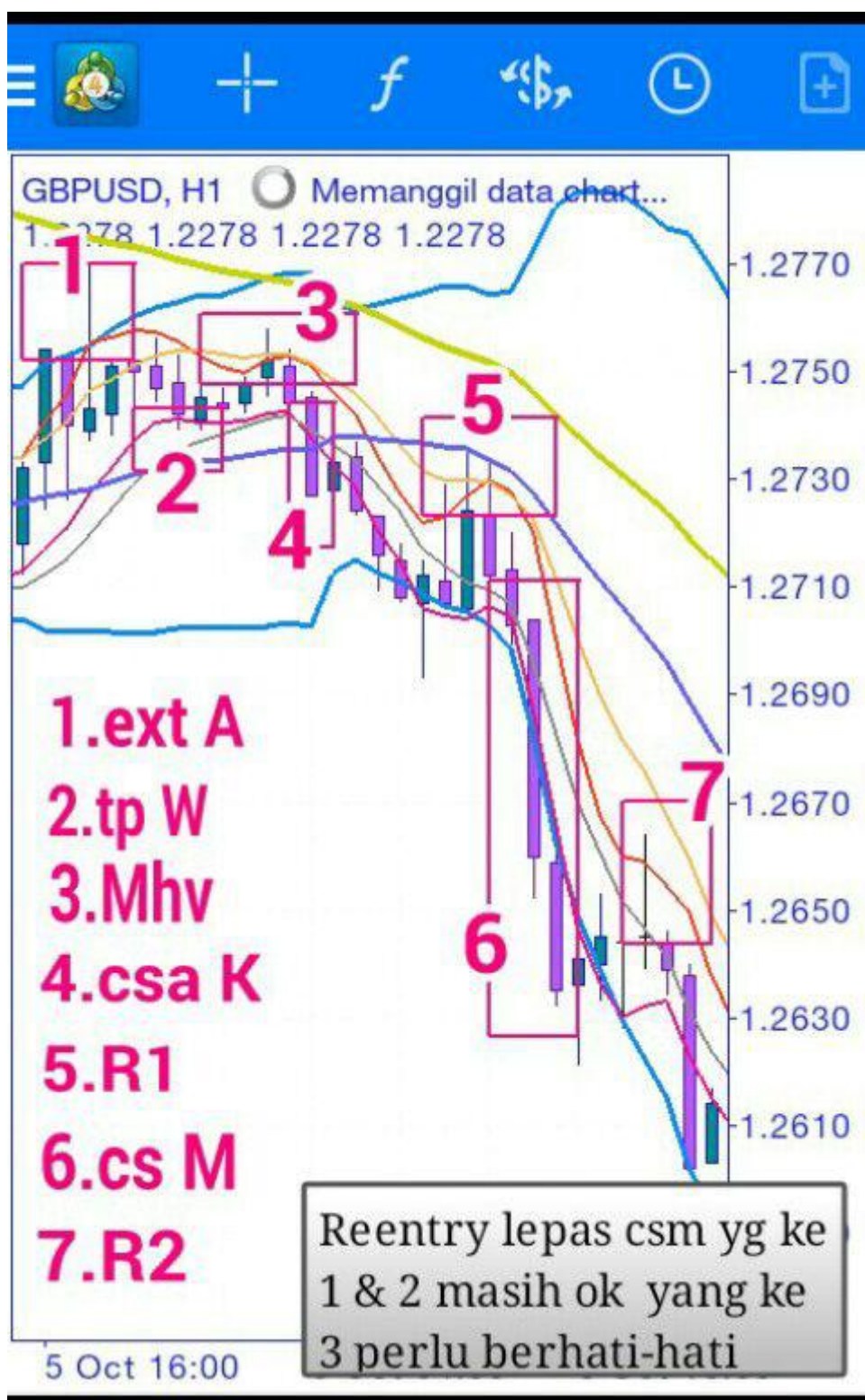
2. Reentry reject a 5- / 10 + mid BB
3. Reentry 5- / 10 + EMA50











It was an example of reentry position I sign R And no 5 +

7

Mandatory touch if he let the first break until close cs if close in 5- + 10 / B in mid remain reentry





The above example is a 5- +10 reject him in R1

And we have to consider a 5- + 10 must coincide if the situation astride we have to be very careful and R2 reject example 5- + 10 + mid

BB

## CHAPTER 13. Reentry STRONG

Reentry solid / invalid

1. terjadi after three kenaikan if BUY
2. terjadi after 3 declines sell

And we also use MTF to MTF REM menvalidkan Reentry formula  
RRE REE

R: Reentry E:

Extrem M:

mhv

After the first 3 seconds the increase buy



Reply to two seconds after the third decline in sell



#### CHAPTER 14. MTF

our analysis will occur after reentry reentry and entry zone we can not directly see execution Payer TF under which it must establish the direction setup



### Its analysis

1. Make sure Csak a CSM in small TF
2. Make sure cs betul2 entry reentry zone
3. minimal increase or decrease in the last 3 to 4  
clinch use mtf







So when there are cs focus its direction towards where we buy or sell and then when there's reentry confirm first with small TF Use setup MTF REM RRE REE

We monitor when cs in and touch the reentry zone between 5- + 10

5- mid BB + 10 + 5- +  
10 + 50 EMA

We note in TF small he formed a setup direction or if a setup it can be executed, and the setup is common at the same time there is no ciri2 special we only trade with 3S (wait, wait, wait) wait setup a new valid execution goal is to minimize floting So OP was not in a hurry

Invalid new set-up can be used for execution

We wait in TF when it finished third in the setup cs 2 we go in reverse to Monitor TF last we see if we can not be hold

extreme positions and see tf holding Posts

Csak is only valid in the current TF and TF beneath bring Example:

Csak H1 she only influential in TF H1 and H4 on the underneath And he did not participate Posts

The analysis must be in accordance with and always use 3 TF MTF formula

H1	R	R	R
M15	E	R	E
M5	M	E	E
H4	R	R	R
H1	E	R	E
M15	M	E	E

### Multi time frame

-Monthly,Weekly dan Daily

-Weekly,Daily,H4

-Daily,H4,H1

-H4,H1,M15

-H1,M15,M5

-M15,M5,M1



We trade only after reentry after csak and CSM OP extrem and mnhv only by reentry time tf besr

#### CHAPTER 15. BEST reentry

Best Reentry occurs after Csak H4 on

Characteristics:

1. There mid BB intersection with EMA50
2.  $ma5 + 10$  coincide and intersect with mid BB and also EMA50 If there is such a market

will change direction in total





example 2

Cintoh 1 BB mid intersection with EMA50 And 5- + 10

coincide Example 2

BB mid crosses and EMA50 and 5- + 10 also intersected It is best reentry

Two examples can last seconds or in the event of BB Csak horizontal

## 16. Article PULBACK

when deciding trend we've discussed the first to see the BB and EMA 50 in H4 on

1. When prices on the mid and EMA50 BB in H4 we focus on looking setup BUY
2. When a price below mid and EMA50 BB in H4 we focus on sell
3. If opposite direction occurs at TF H1 down he just pulback TF to complete large and typically will form large reentry in tf Example:

H4 prices above mid BB and means towards a position looking up trend buy And it turns out

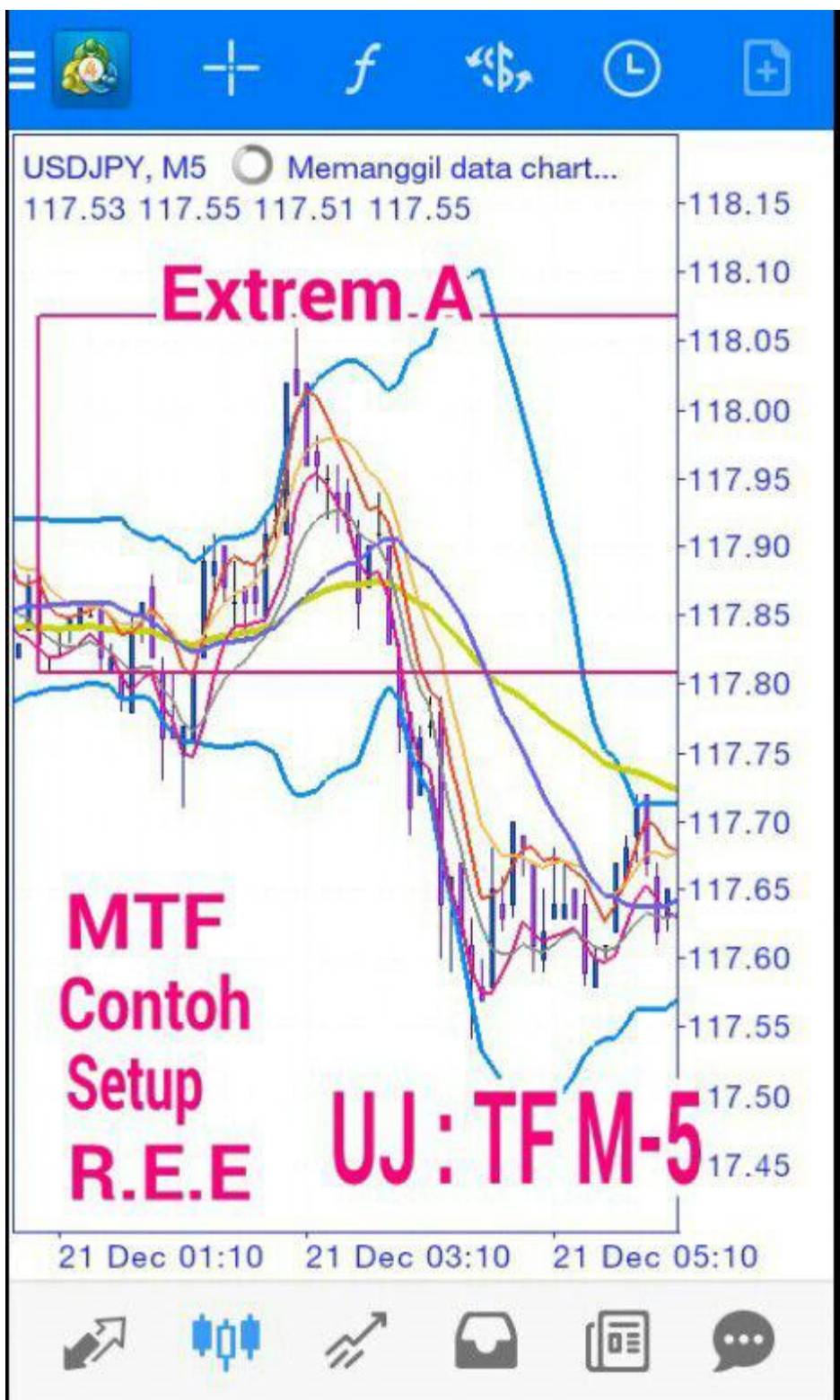
H1 makes us follow directions could sell up to sell at H4 TF possible reentry touch zone or reject a 5- + 10 mid BB



Sample SS is her position downnd price trends and try to make the BB mid reject reentry







Similarly, the TF m5

He got a break mid BB to BB to the top and sell at the top to form extremely BB From the H1 happened is sell

But why M15 and M5 is even more detrimental in a small pulback Tf in the opposite direction of the TF in order to complete the setup H4

## **Setup entry in the BMA is**

- 1.extrem
- 2.Mhv
- 3.reentry

And we are here BMA's focus on reentry Reentry  
after csak and reentry after CSM

Mhv Extrem and execution as long as he can in the confirmation of reentry setup from TF great setup accordance MTF

**REM**

**REE**

**RRE**

if Reentry in H1 H4  
M15 extrem extrem

Extrem in M15 and H1 can be executed with the terms of the confirmation of the reentry TF Csak applies to the  
current TF and TF thereunder

If we find csak in H1 after extrem and participating mhv is M1 M5 M15 So the trend that occurred in H1  
to H4 is not participating

If that occurred in H4 that automatically follow the TF H1 down I

rewrite couple MTF

Only TF 1.Reentry  
pasagn  
Only-weekly, daily

2. Reentry weekly,  
daily Weekly pair  
MTF-H4

3.Reentry daily  
daily pair  
MTF-H4-H1

4.Reentry MTF pair  
H4 H4-H1-M15

5.reentry pair MTF  
H1 H1-M15-M5

6.reentry M15

Couples MTF  
M15-M5-M1

#### **Chapter 17. TP & HOLD position**

We will repress

Extrem: TPW in 5- / 10

Mhv: TP removal in the low mid BB BB can then TP

reentry reentry csak and CSM

1.Reentry csak TP setup if we look down / up to the top / low weight we must be extremely TP If the down / up the CSM

we hold position and install the SL +

after so we wait for the CSM to be extremely protective of our first TP When there is extrem

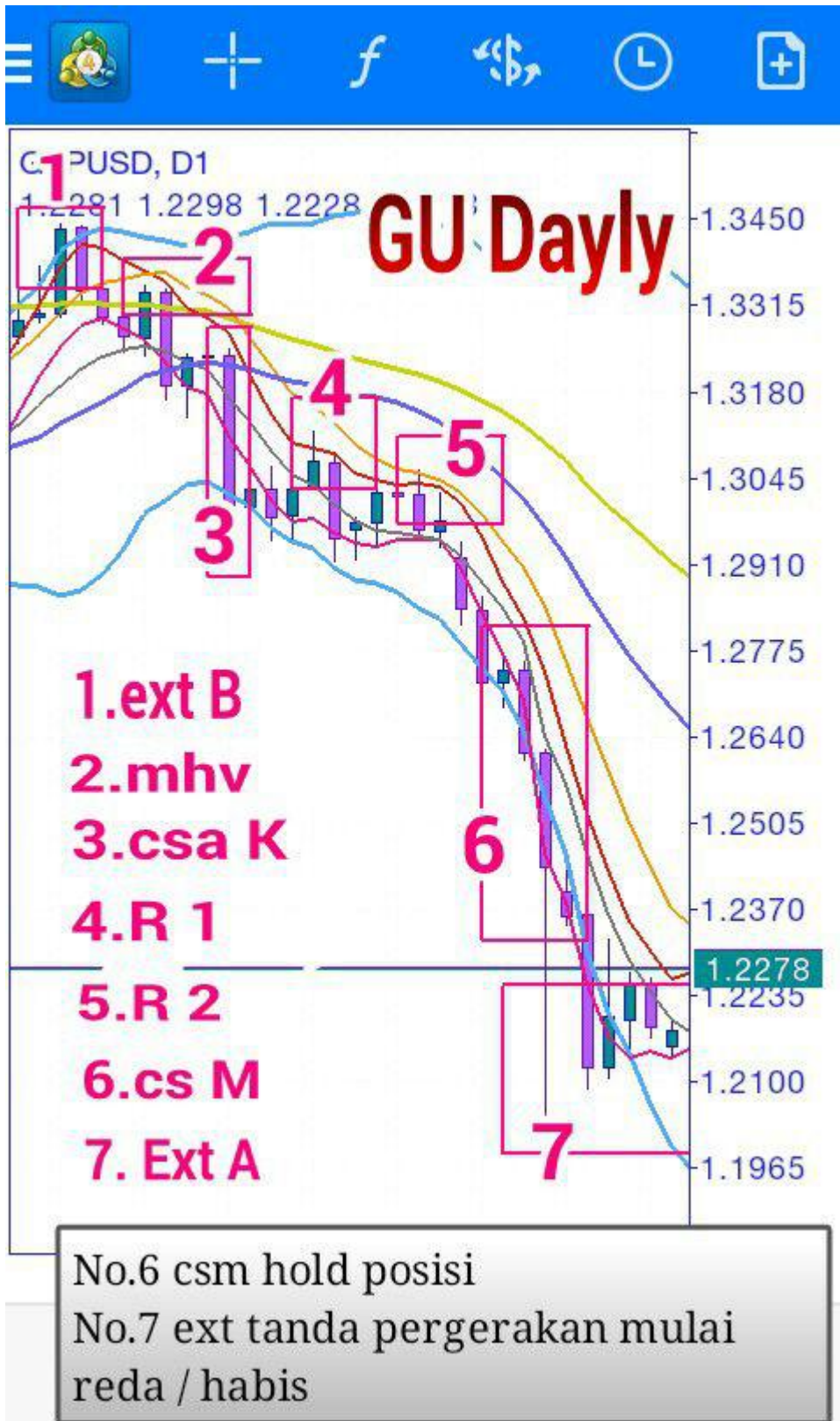
2.Reentry CSM is also the same when the price falls / rises to CSM again we hold a position and when required but a extrem





We sell in no TP 2 MHV us why BB Low because prices will rise 70-80% go looking mid BB to make reentry

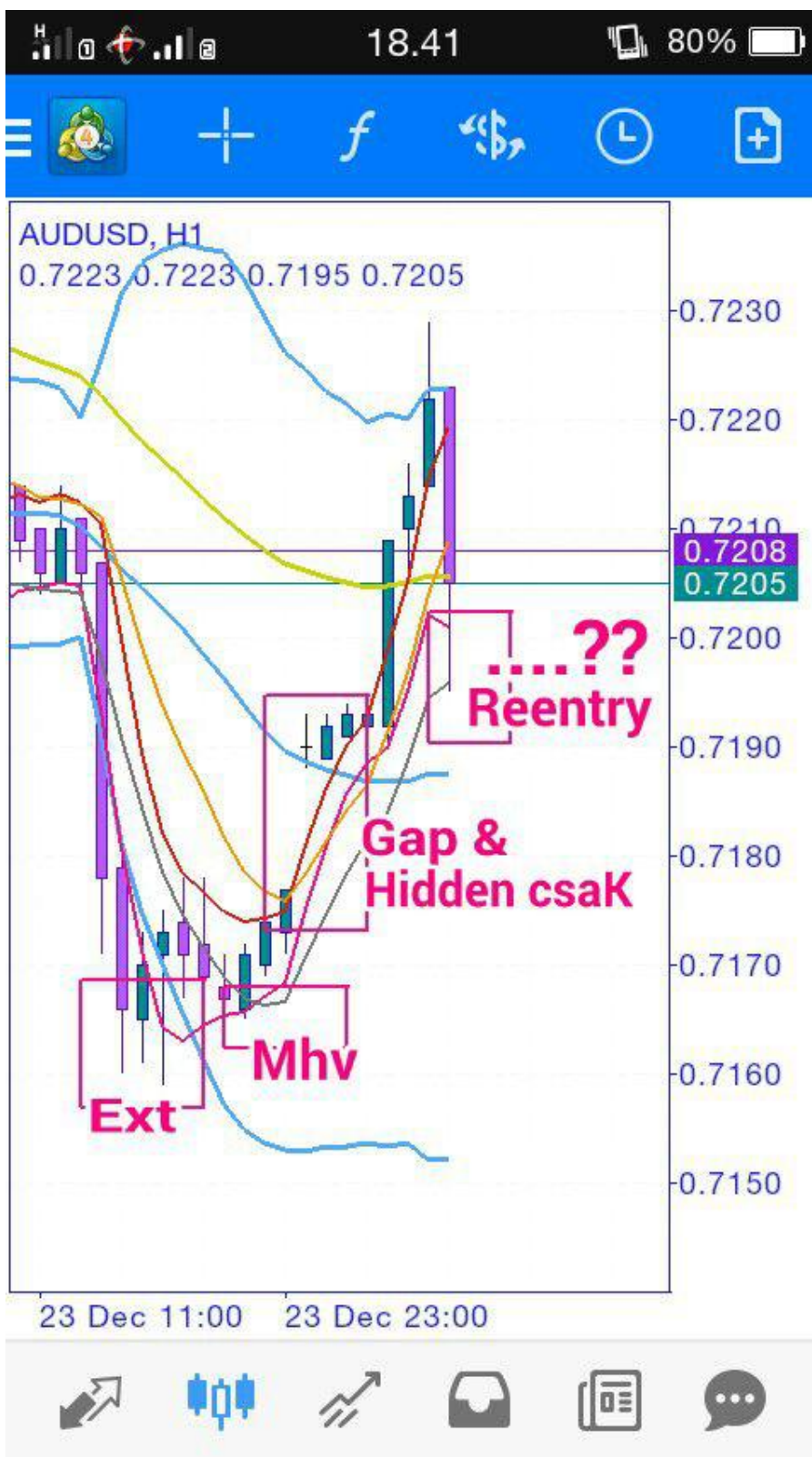
And it turns out the price even penetrate mid BB and Create new MHV MHV double no4 so we might sell more when prices fall into CSM poorer we hold position



For example we sell at no 4 & 5 while forming turun.menjadi CSM reentry and we hold no position and TP in 7 seconds into extrem

And keep in mind do not buy when there is extrem entry after CSM sell sprti ss example above because the price is a correction may be short term we can also wait for the price in a 5- / 10-high or mid BB to create a new entry reentry yet again follow the trend of selling again

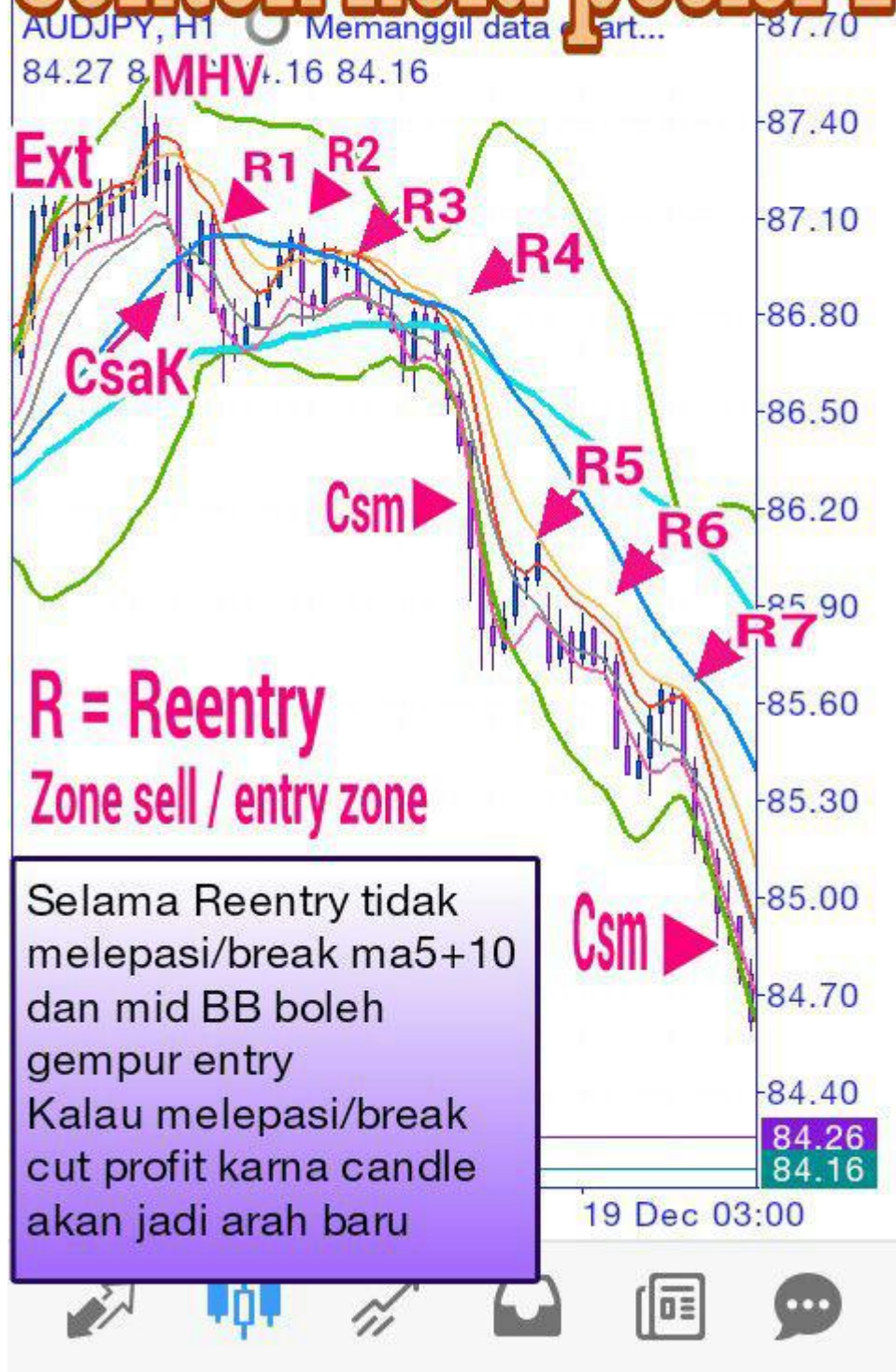
So when do the opponents CSM except for reentry after making us wait until there mhv cs reverse direction and new valid entry when forming our reentry



We see again after the CSM and the price makes it extremely MHV and some hidden gab as he valid new csak we can reverse the current counter entry price make reentry

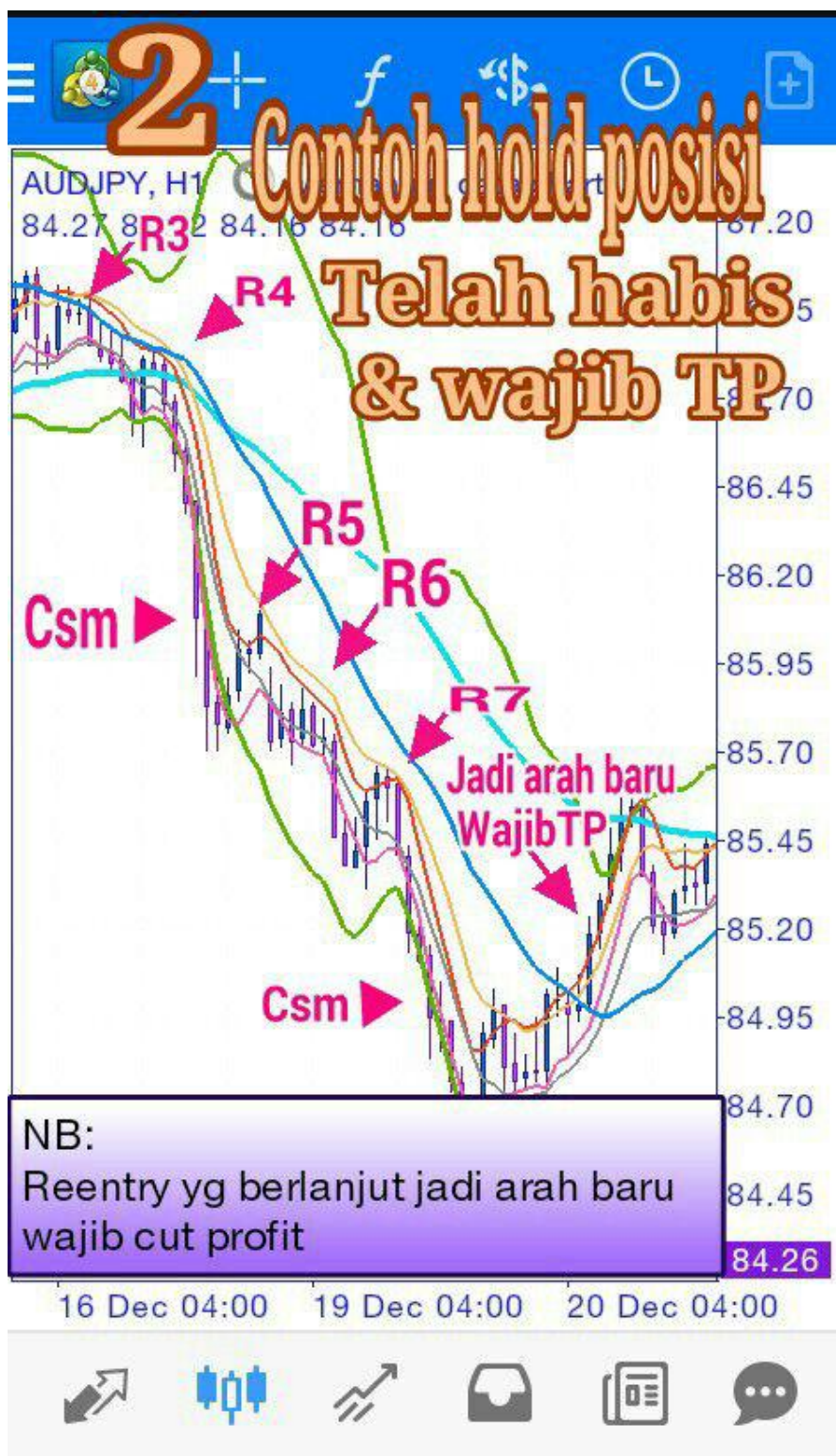
As examples of the above ss CSM sell after the price makes a new full setup can ebtry berlawann

# Contoh hold posisi 1



In the example ss off MHV price break mid BB and make way after the entry price back to the mid BB to make reentry we follow the trend and sell after reentry valid and invalid setup MTF After R1 price makes extrem not so CSM we are obliged TP and log back in R2 new entry can hold the position until a full layer bumps





And keep in mind the last time the price CSM create a new setup and make new direction we must cs CUT All because the price will go towards  
As examples of the above examples ss ss more details



In R3 we see the price does not make reentry into csak and even break through mid BB

## SUMMARY

1. Before analysis see situation B

2. for determine the trend seen

TF Big and dayly

\* With a view EMA50 position and MID BB

3. kalau price at H4 TF and dayly shown below EMA50 and mid BB means we focus down trend and sell just looking setup

3A. If the price of the TF H4 and dayly show on EMA50 and mid BB Means up trend

So we focus only were setup buy

4. Set up the best in the horizontal and inclined BB

5. In an opposite BB vertical entry that do not have a complete setup (extrem mhv-cs-way)

6. selalu looking for safe entry that is in the setup Reentry And be  
sure to happen after the strong cs

Last 7. Reentry cs continue towards becoming extremely obliged if TP If CSM  
can continue to hold the position

8. Reentry after CSM CSM is, if they can continue to hold the position If progress to complete  
setup (extrem-cs-mhv direction) must be cut profit

10. selalu with a valid reentry setup MTF

11. Rumus Mtf 3

**,REM**

**,REE**

**,RRE**

**R = Reentry E =**

**Extrem M =**

**Mhv**

12. selalu follow TF parent (TF large) do not

follow the TF child

(TF small) If the opposite direction of the TF

13. Always follow the SOP / standard open position in

BMA

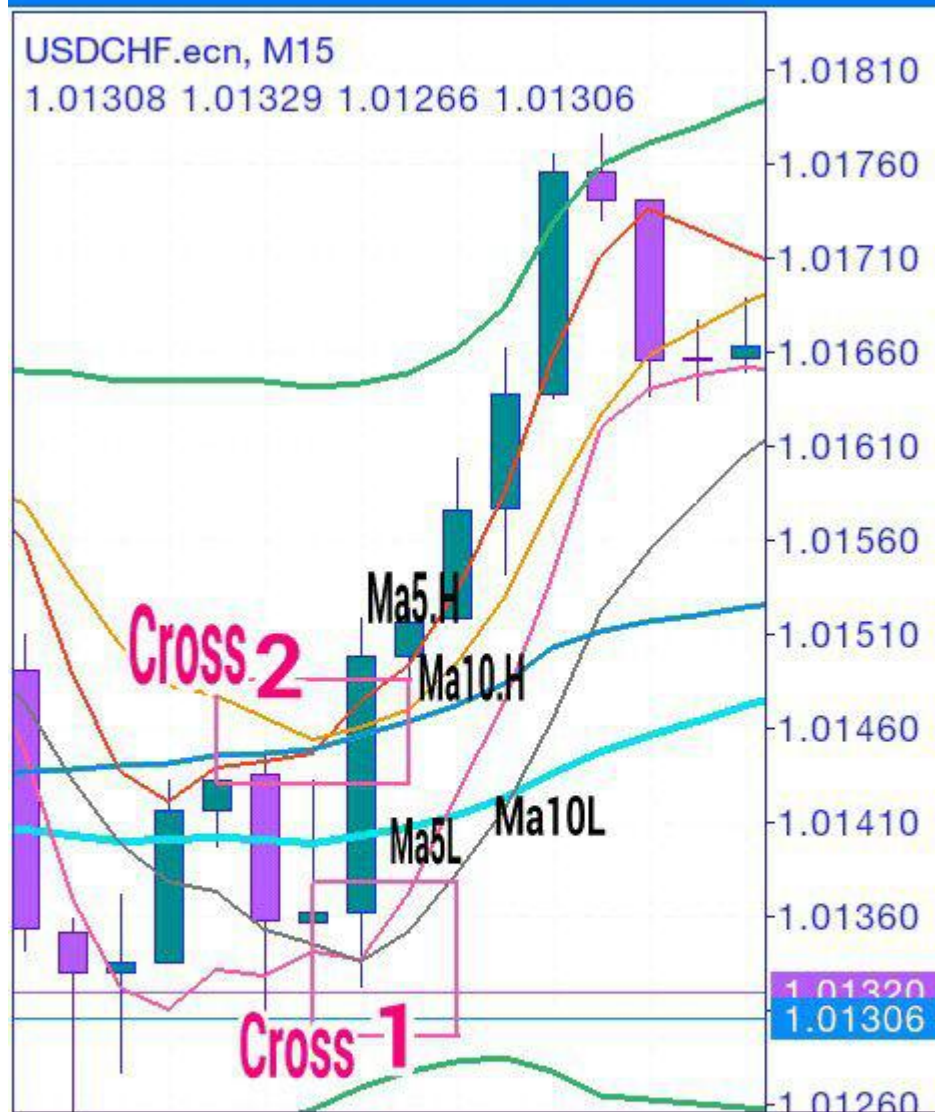
do not ever OP from the origin in one entry and let me not let me not blame the pounding that floting



Perubahan tren / setup valid di tandai  
cross ma.5+10

Saat down trend ma.5 high harus duduk  
di bawah ma.10 high corss 1  
Dan ma.5 low duduk di bawah ma.10 low  
cross 2





Perubahan trend / setup valid di tandai  
cross ma5+10

Saat up trend  
ma.5 Harus duduk di atas ma.10 low  
cross 1 dan di lanjut ma.5+10 high cross



GBPJPY, H4

145.15 145.37 145.03 145.23

148.70

148.20

147.70

147.20

146.70

146.20

145.70

145.23

144.70

144.20

143.70

143.20

Reentry sell kukuh

1

2

3

Reentry sell kukuh

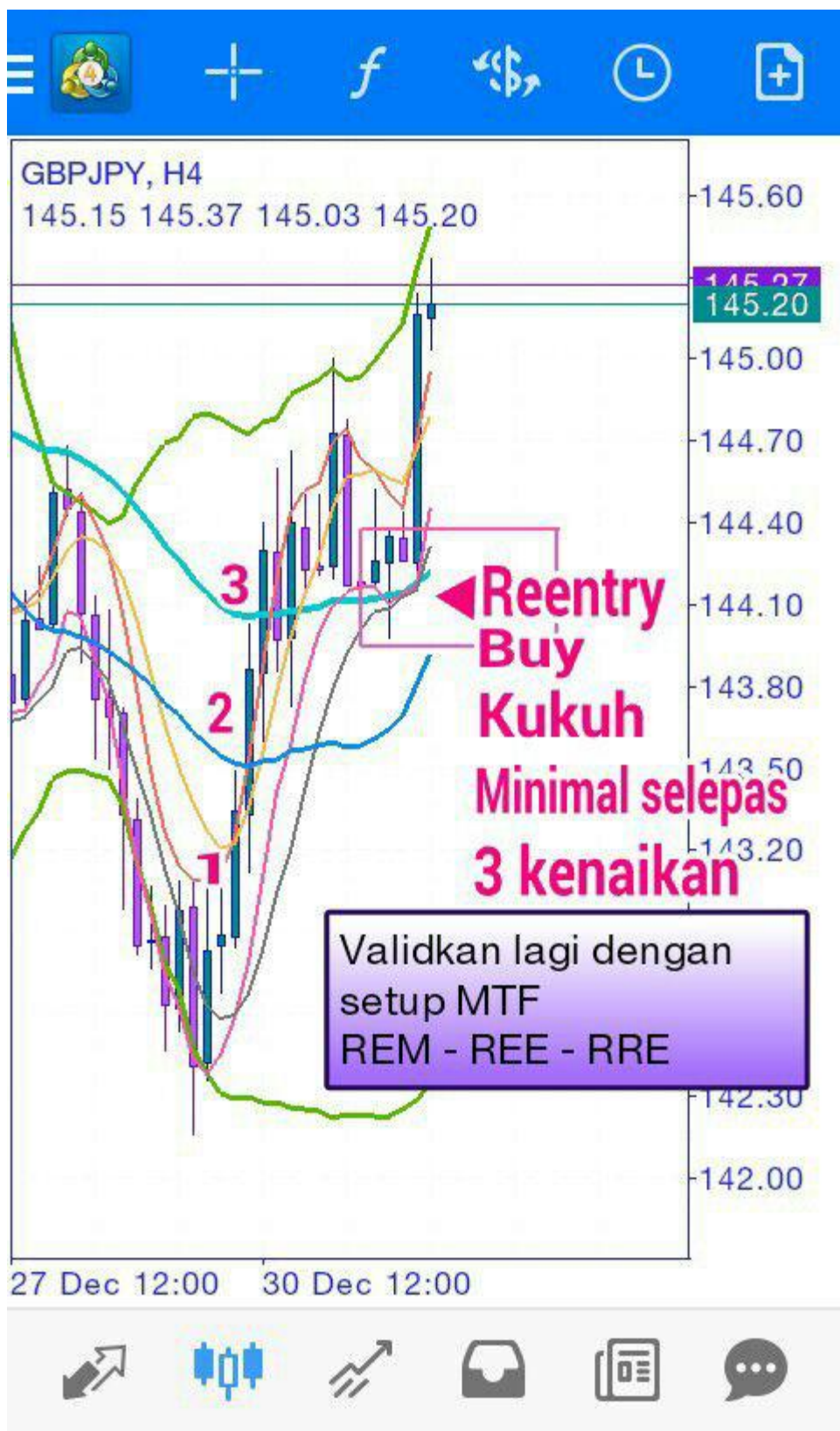
Minimal selepas

3 kejatuhan / penurunan

validkan lagi dengan setup MTF  
REM - REE - RRE

15 Dec 08:00 20 Dec 08:00 23 Dec 08:00





MHV VALID



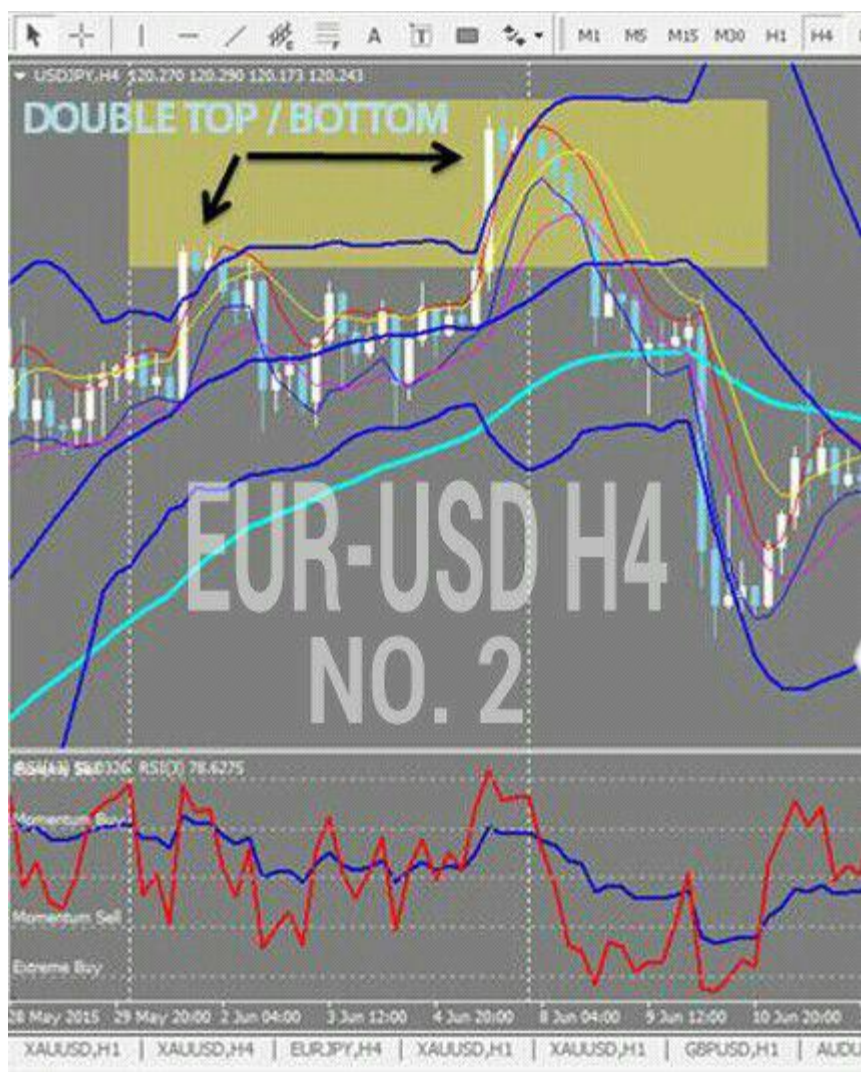
# BBMA SUMMARY

## MARKET HILANG VOLUME

TIME FRAME	D1	H4	H1	M15
	DI TF BESAR SEDANG MEMBUAT MARKET HILANG VOLUME (MHV)			
	TETAPI DI TIMEFRAME KECIL AKAN MEMBUAT			
TIME FRAME	H4	H1	M15	M5
	DOUBLE TOP//BOTTOM			
TIME FRAME	H1	M15	M5	M15
	DIMANA TEMPAT KITA ENTRY???  TEMPAT ENTRY YANG LEBIH KUKUH BILAMANA DI TF KECIL ADA MEMBUAT CSA KUKUH DAN TEMPAT ENTRY KITA DI RE-ENTRY. SELEPAS BERLAKUNYA EXTREM + TPW DAN MHV. KALAU SUDAH ADA RE ENTRY MESTI ADA MOMENTUM YANG MANA CANDLE TUTUP DILUAR TOP/LOW BB.			

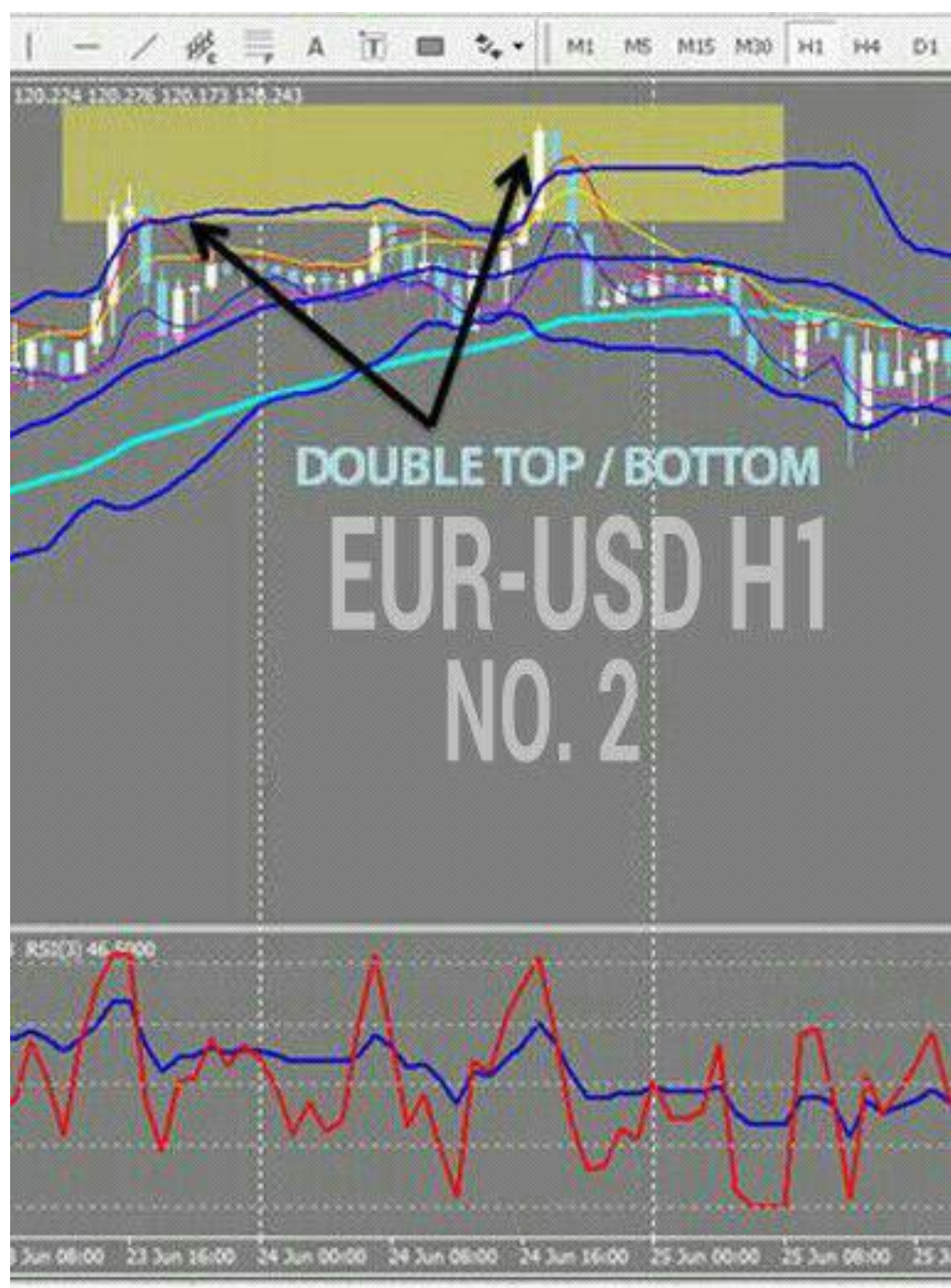






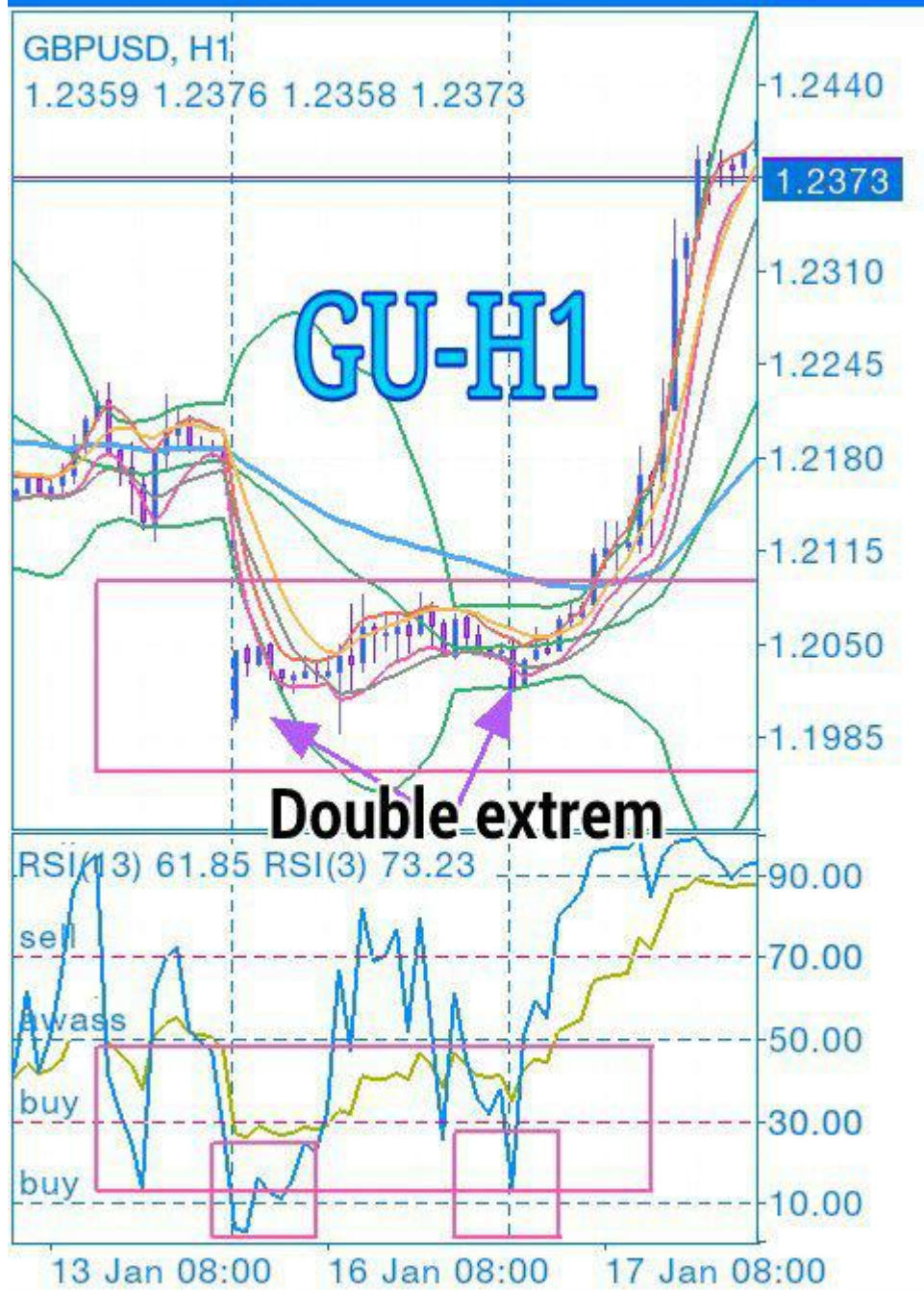


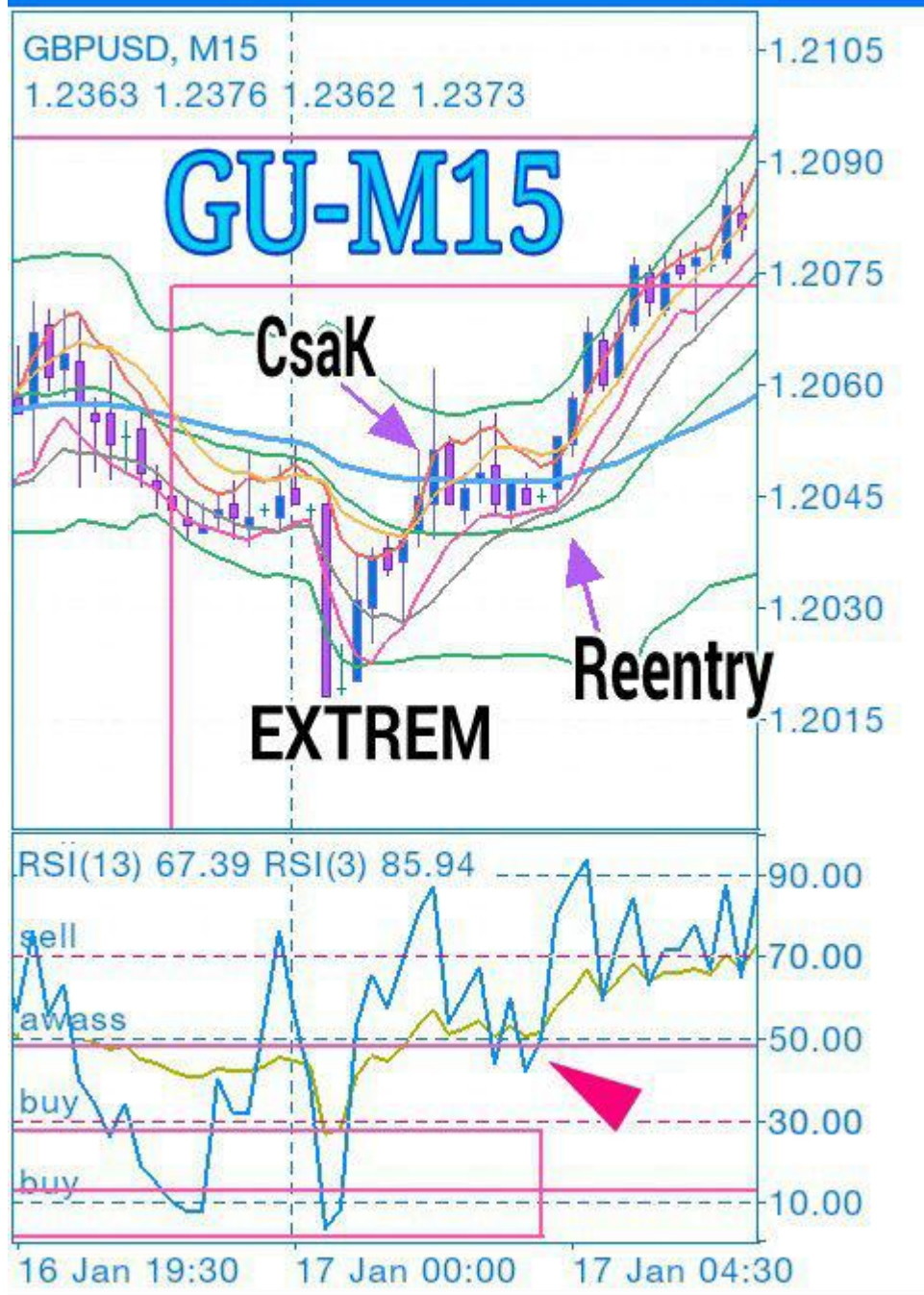








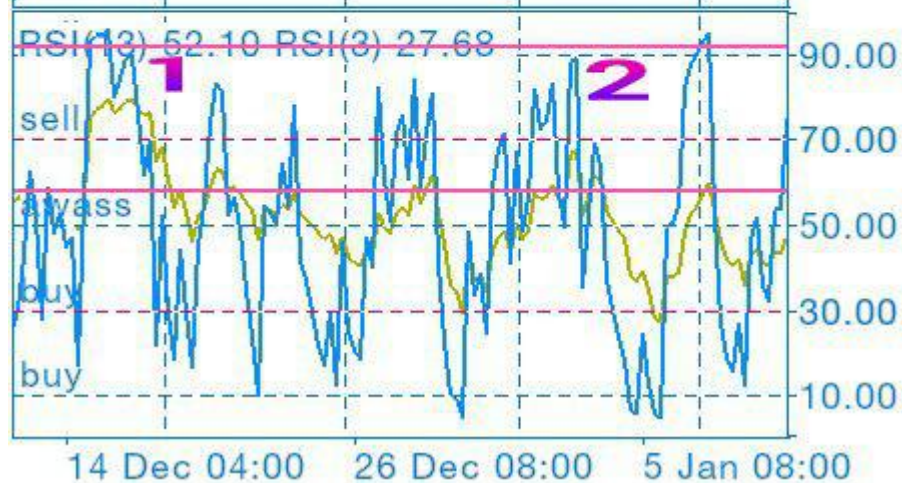
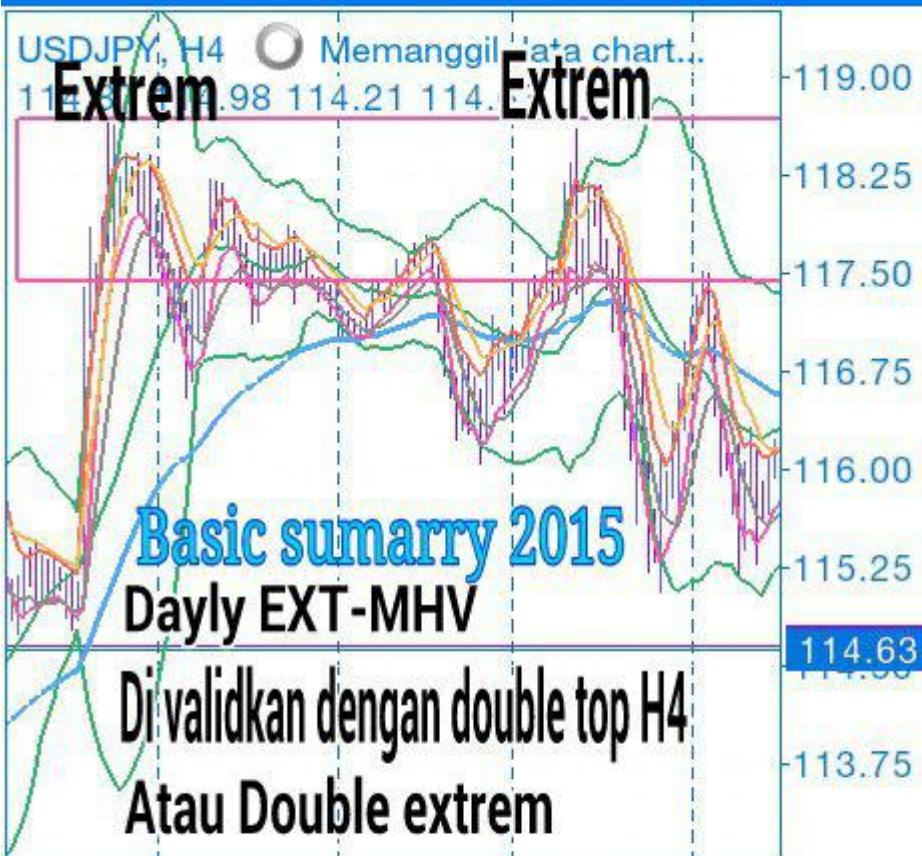


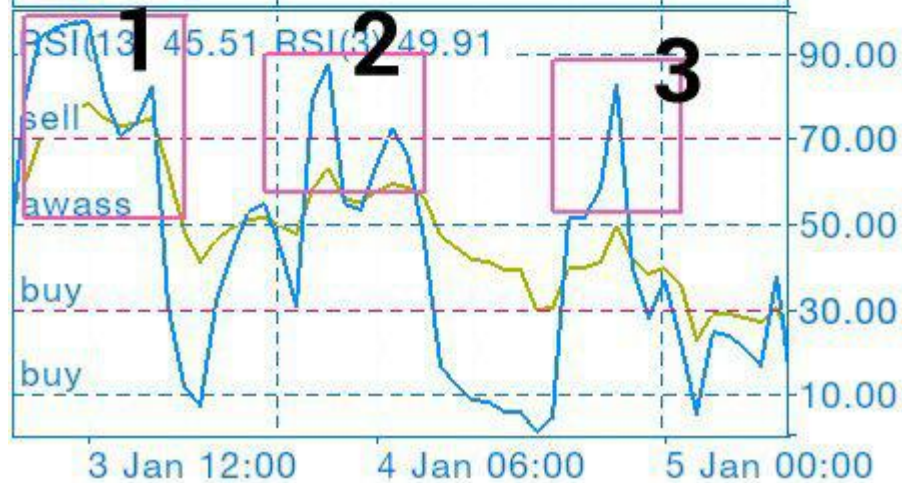
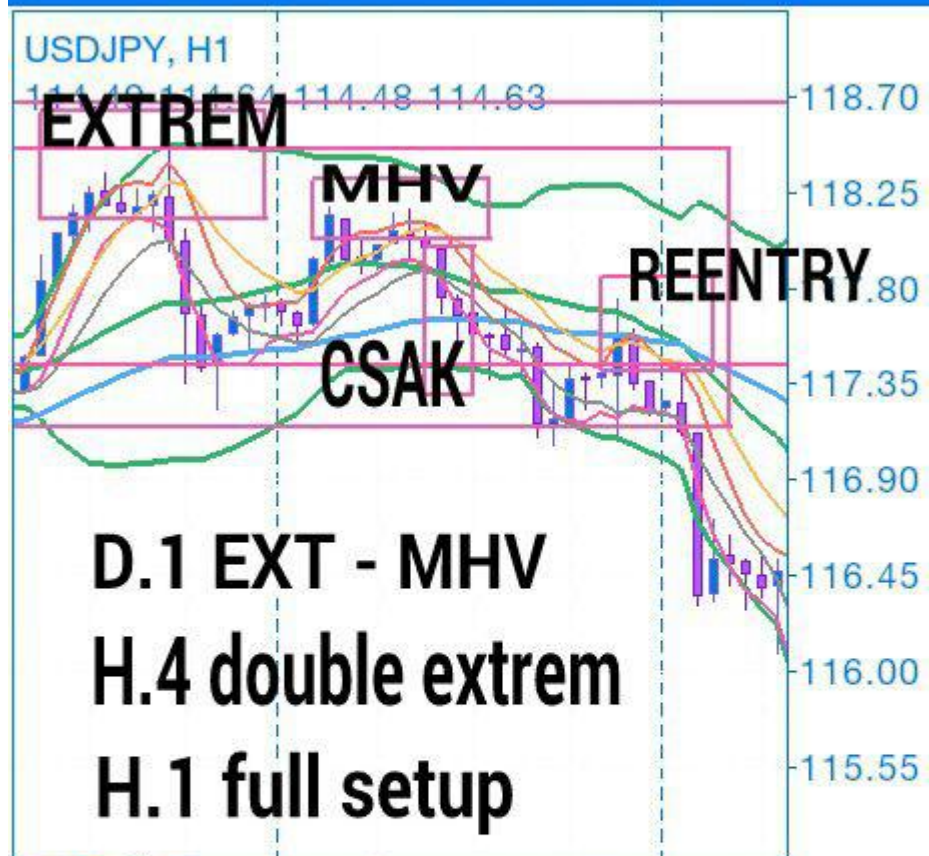












H4



Trade





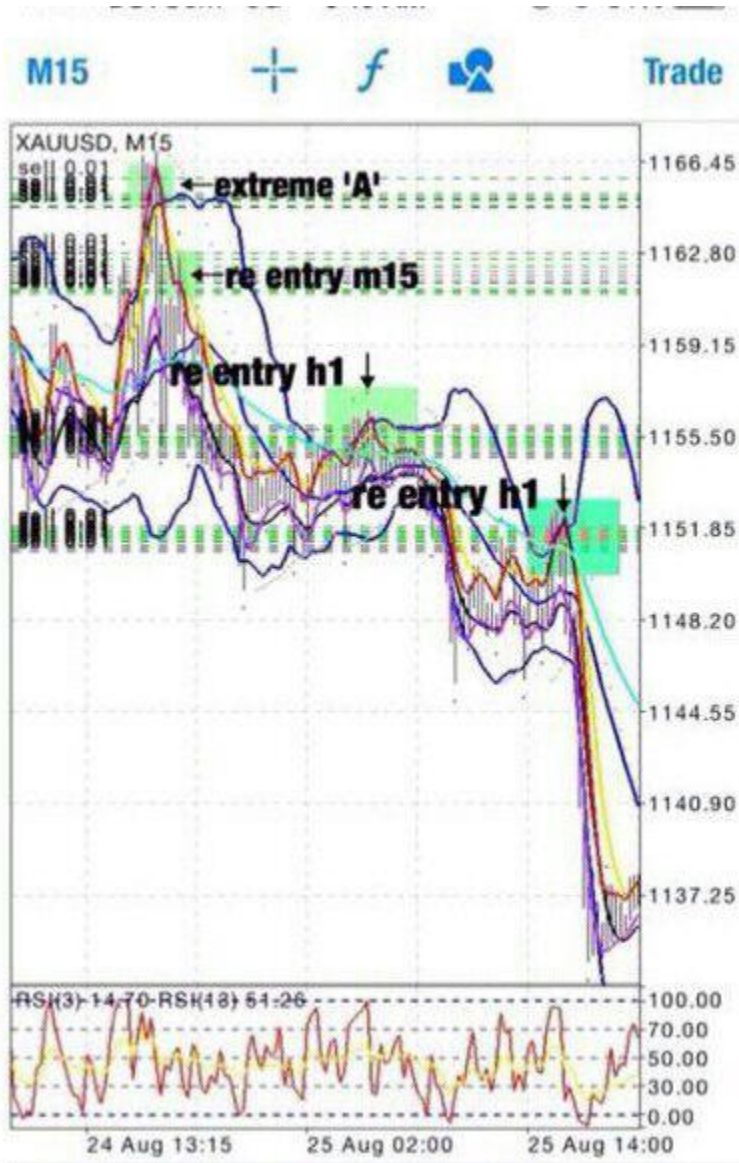
H1



Trade







HOW TO USE AND RSI RSI 13 3

## BBMA + RSI 3 SUMMARY

TIME FRAME				SUMMARY	
<b>H4</b>	BBMA	-		EXTREME B SEMASA BB MENDATAR	
	RSI	-		HIT 10 UNTUK BUY / HIT 90 UNTUK SELL	
<b>H1</b>	BBMA	-		EXTREME SEMASA BB MENDATAR	
	RSI	-		HIT 10 UNTUK BUY / HIT 90 UNTUK SELL	
<b>M15</b>	BBMA	-		EXT - TPW - MHV (ENTRY)	
	RSI	-		HIT 10 UNTUK BUY / HIT 90 UNTUK SELL	
<b>M5</b>	BBMA	-		DOUBLE or TRIPLE TOP/BOTTOM	

15



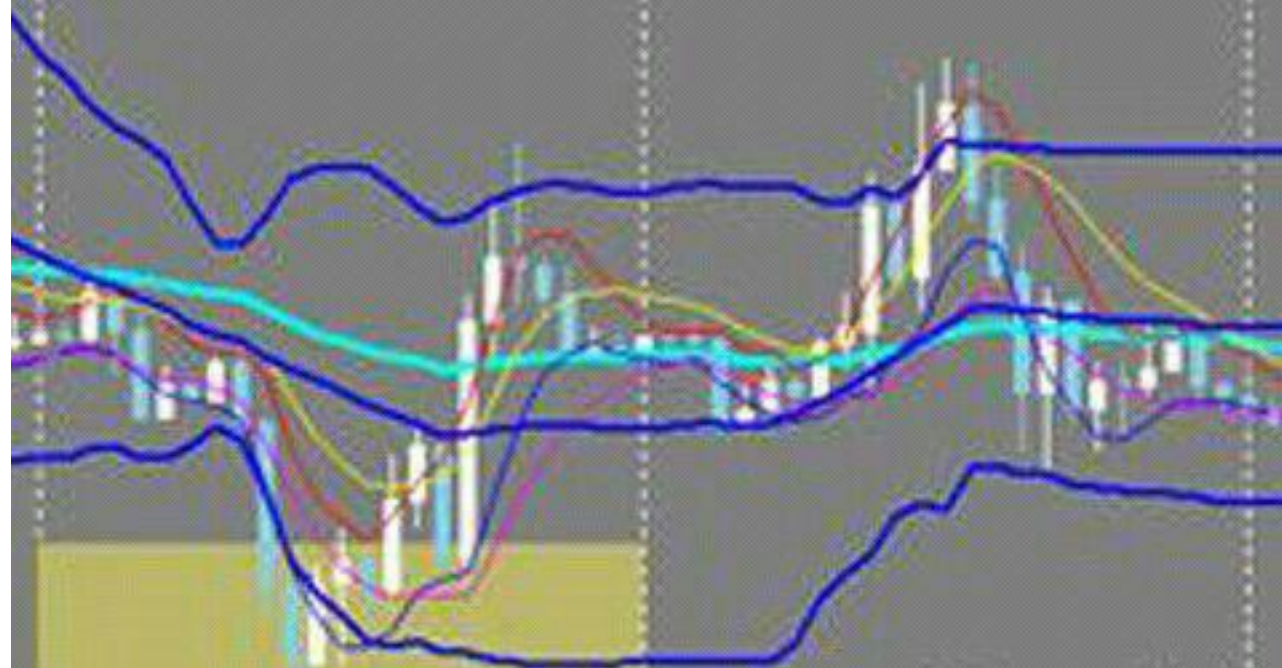
NO-1



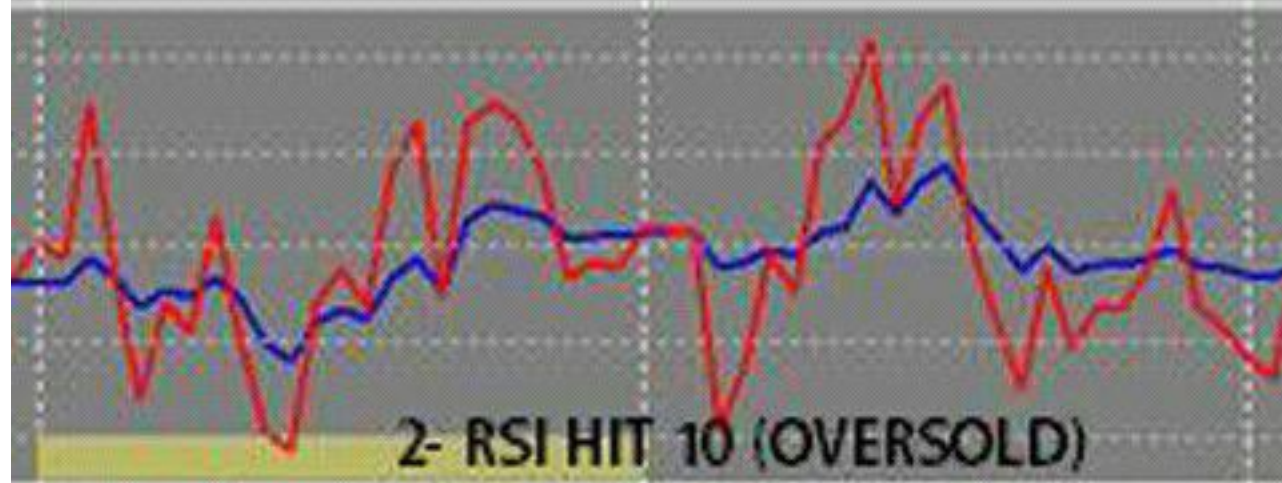
D1 W1 M1

# EUR-USD H1

## NO. 2



1- Extreme semasa BB mendatar

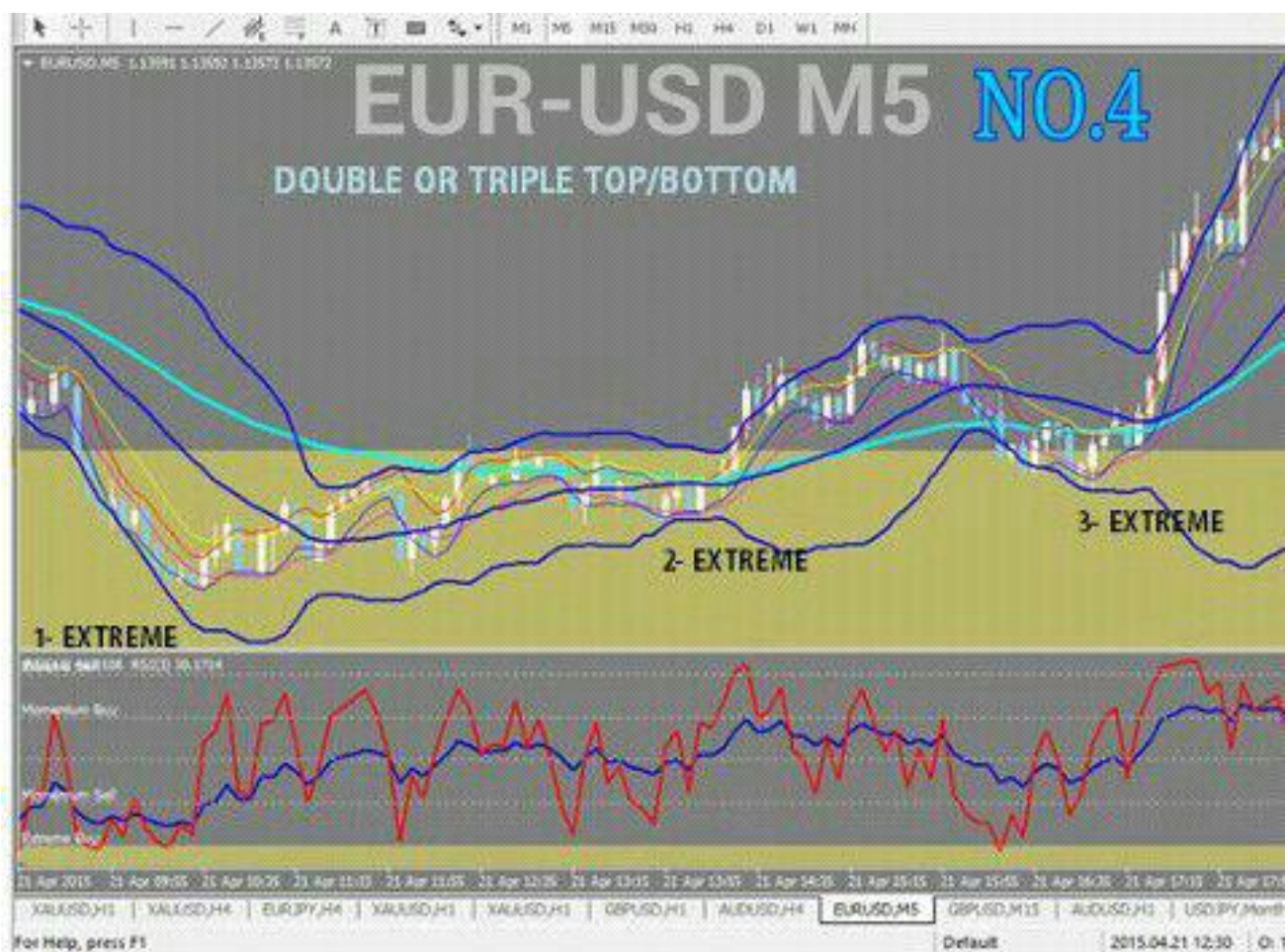


2- RSI HIT 10 (OVERSOLD)

21 Apr 00:00 21 Apr 08:00 21 Apr 16:00 22 Apr 00:00 22 Apr 08:00 22 Apr 16:00 23 Apr 00:00





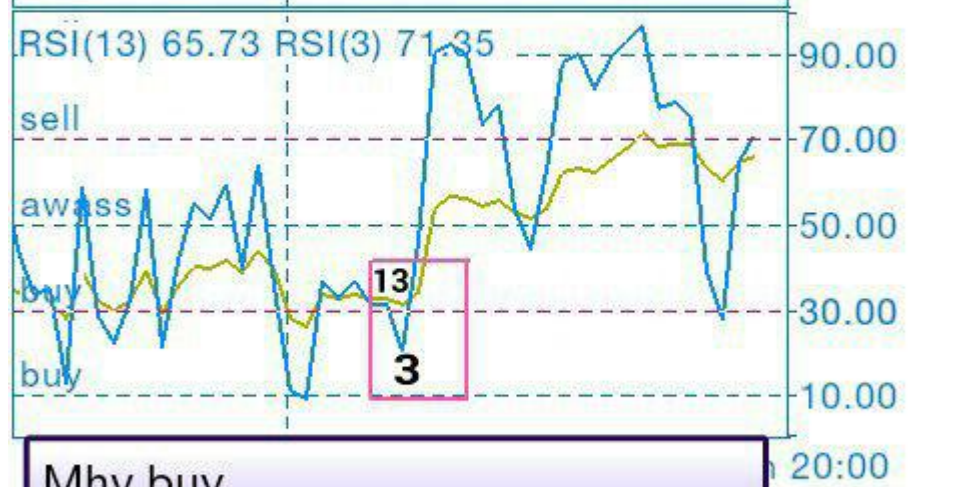
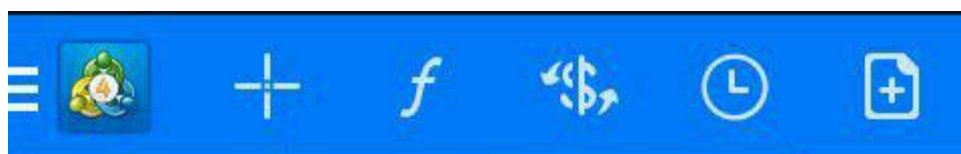






Pergerakan RSI 13 mengikuti EMA 50  
 Saat DOWN trend RSI di bawah line 50  
 Saat UP trend RSI di atas line 50



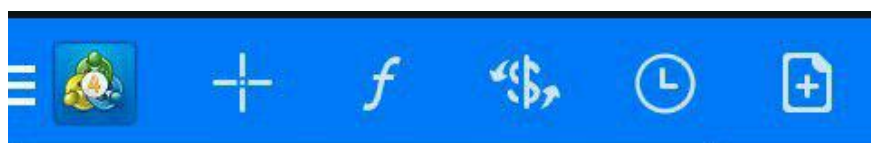


Mhv buy  
RSI 3 di atas line 10  
RSI 13 di atas line 30





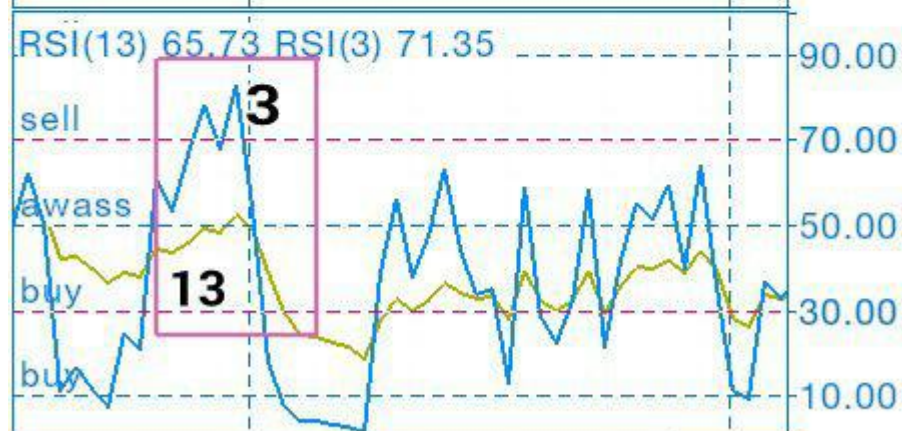
Saat price bentuk csak  
Maka RSI 13 akan mula break line 50



Setup buy  
RSI 13 di atas line 50  
RSI 3 di atas m ne 30







Reentry sell  
RSI 3 di bawah line 90  
RSI 13 di line 50

an 16:00



GBPJPY, H4

141.71 141.86 141.37 141.83

# Best Reentry Buy



## Best Reentry Buy

Ma5+10 berhimpit di mid BB

Terjadi signifikan drop pada RSI 3

Dan RSI 13 tetap di atas line 50



Best Reentry sell

Ma5+10 berhimpit di mid BB

Terjadi signifikan move up RSI 3

dan RSI 13 tetap di bawah line 50

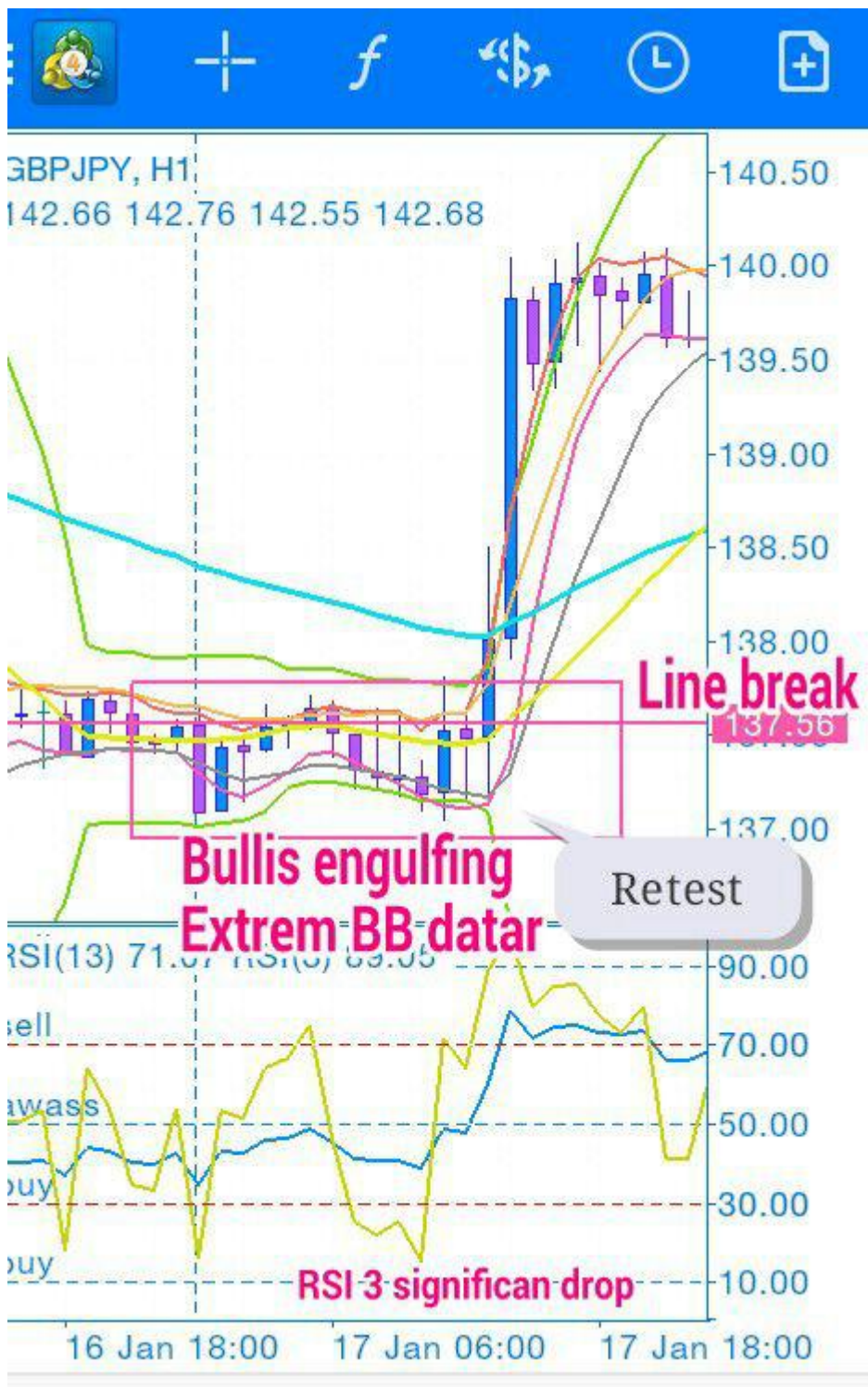


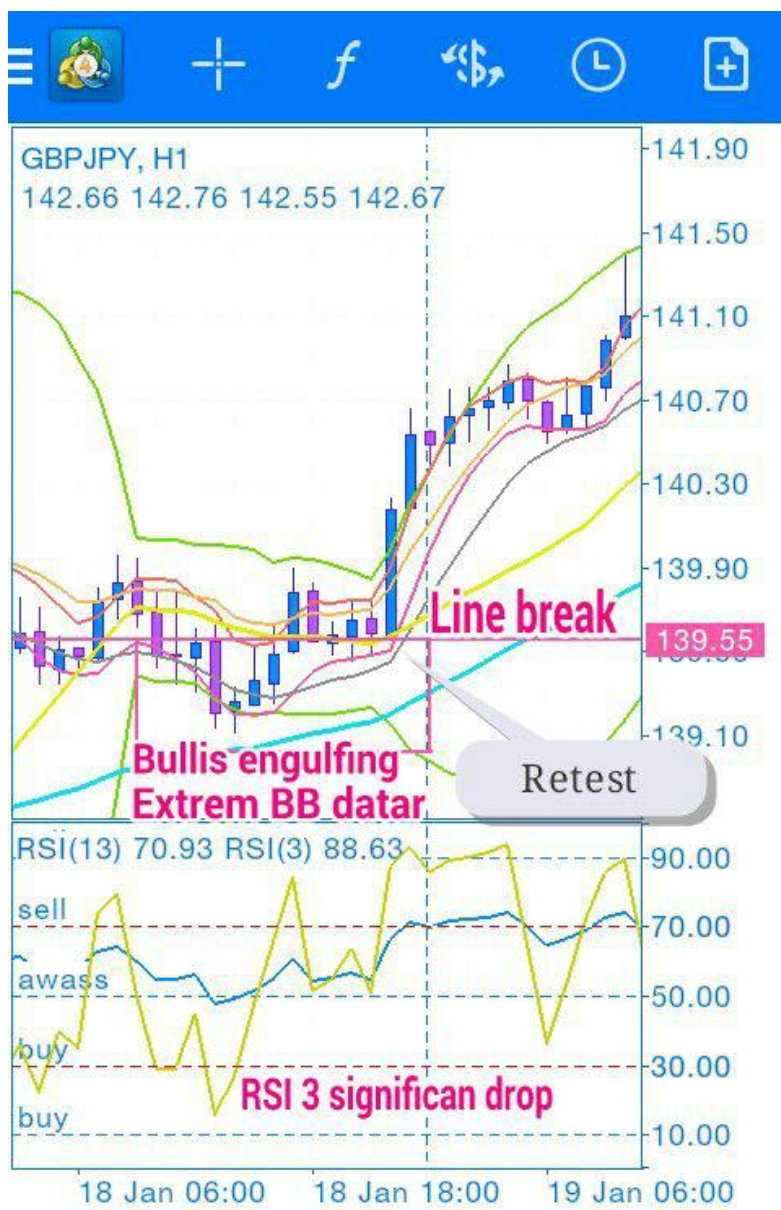
RSI hanya filter penunjuk arah  
 Bukan setup untuk entry  
 Entry tetap dan harus  
 Mengikut setup BBMA  
 Jangan terbalik

[File: 23.BBMA + RSI.pdf] How exsekusi

Extrem BB flat













[File: SND Advance.pdf]

Pdf snd great advance made reference to plus setup BBEMA sure entry [File: the concept of pay debts by Mr.

Salleh Ibrahim.pdf] [File: Various forms of MHV.pptx] [File: MHV VALID.pptx]

[File: SETUP-BMA-ADVANCE-Ridzwan-NAZRI-RM2000.pdf] [File:

SETUP-BMA-ADVANCE-Ridzwan-NAZRI-RM2000.pdf] [File: SOP DIAMOND BBMA.pdf]

[File: CS Gangster.pdf ]

[File: 10. Cara Nak setting RSI 13 3.pdf] [File:

Base-BMA-XBB-Eone-ENS.pdf] [File: CANCELLATION

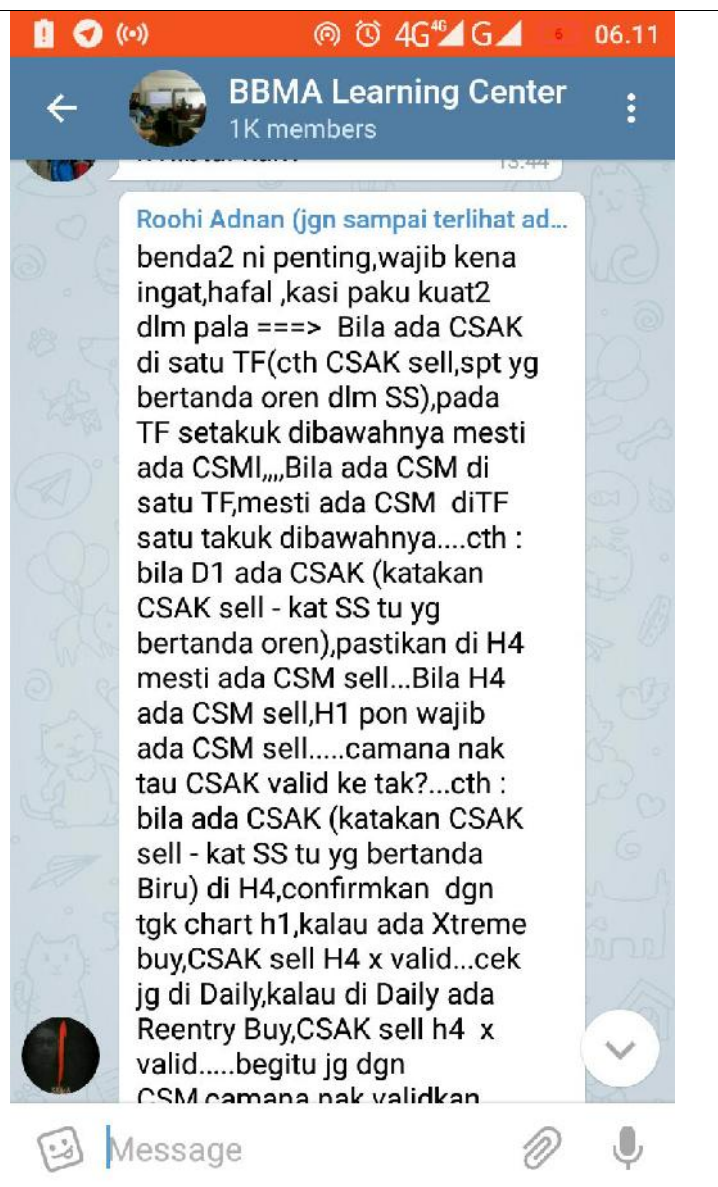
CSA .pptx] [File: Re entry Cantik.pptx] [File: Re- entry

berkualitas.pptx] [File: SOP (2) .pdf]

[File: SOP Re-entry in TF H4.pptx]









if there is momentum there re entry, if re-entry is not  
created m0mentum. run kuat2

=====



currency. kenapa kena buat benda ni:

### CONCEPT:

contoh. jika kita tengok EURUSD meningkat daripada 1.4000 kepada 1.4400. adakah ianya disebabkan USD weakening against EUR? ataupun, USD neutral and EUR yg makin kuat?

kenapa satu2 currency tu jadi kuat atau lemah?

bila ramai org dok jual currency tu, dia jadi lemah, bila ramai org dok beli currency tu, jadilah dia kuat. kalau depa jual usd, depa kena beli currency lain, betul?

so, pair movement is interrelated berdasarkan range pair tersebut.

so kita boleh kira. and bagi score dari 0 kepada 9. seperti berikut.

**0.0 - 3.0 weak**

**3.1 - 6.0 neutral**

**6.1 - 9.0 strong**

after kita kira relative strength semua currency tersebut, kita boleh tahu siapakah yang tgh hangat dibeli/dijual at one particular time. mini trend ye.

contoh macam ni saya bagi kat bawah:

### currency strength

USD 8.5

GBP 2.5

EUR 1.0

JPY 7.6

NZD 5.0

CHF 3.0

AUD 6.0

CAD 1.5

apa kesimpulan yang kita boleh buat?

USD & YEN are strong. menunjukkan market tertumpu beli these currencies.

so kita sebagai trader kecilan, kita follow je lah apa depa buat.

meaning that, kita boleh:

**SELL GBPUSD, EURUSD, NZDUSD, AUDUSD,**

**BUY USDCAD, USDCHE.**

**SELL GBPJPY, EURJPY, CHFJPY, AUDJPY, NZDJPY, CADJPY.**

imagine, each pair gives you 10 pips. trade all. berapa dapat?

12 pair darab 10. = 120 pips.

10 pips/pair in my experience, very easy jika ada extreme condition. maksudnye, strength dia melebihi 7 lawan strength yang kurang dari 3.

untuk NZD, CAD, AUD, CHF... eventhough dorg ni very weak or very strong, momentum dorg short lived, pendek je. sbb less demand compared tu usd, gbp, jpy and eur. so, jgn terpedaya. **just follow the yen**

### EXECUTION

[To view links or images in this forum your post count must be 1 or greater. You currently have 0 posts.](#)

