

Daily Market Commentary

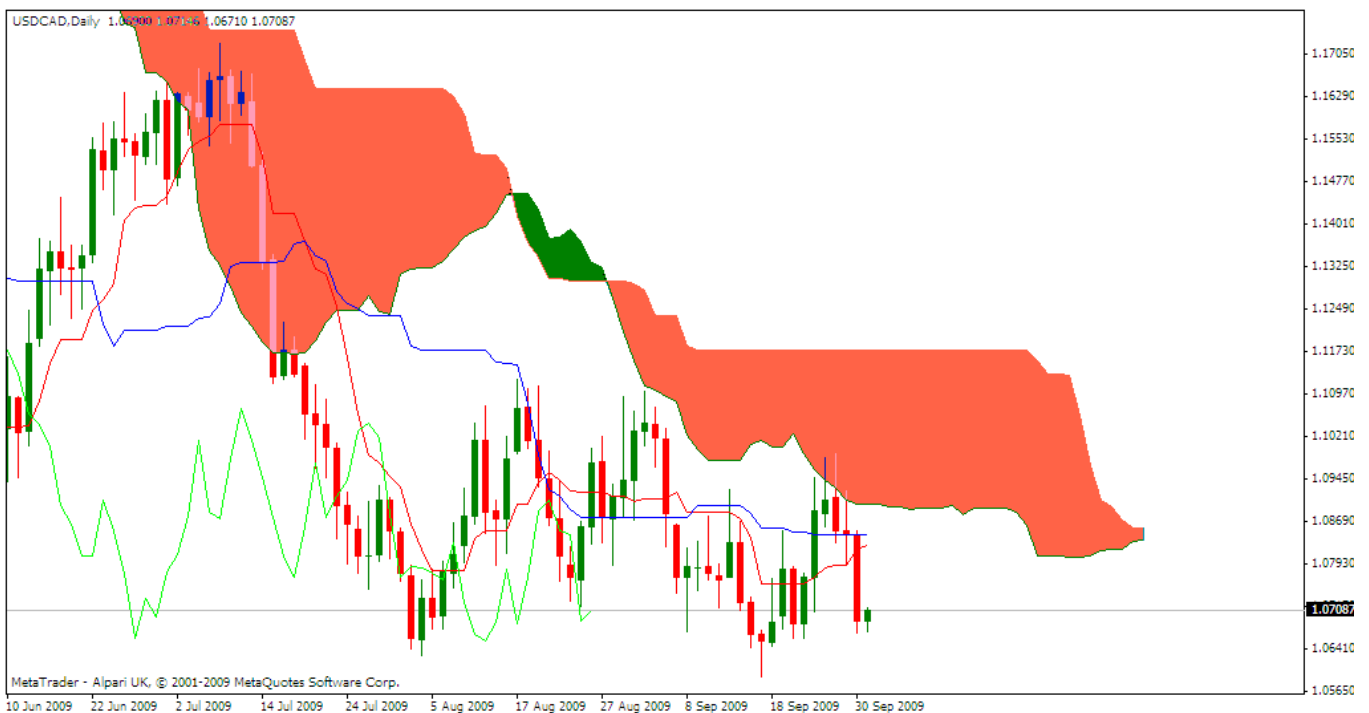
Ichimoku Kinko Hyo

Kumo Warriors

Technical Analysis

01 October 2009
USD/CAD

Daily Candlestick Chart



Comment:

A big downwards move yesterday. Let's see if the price will test bottom of the range.

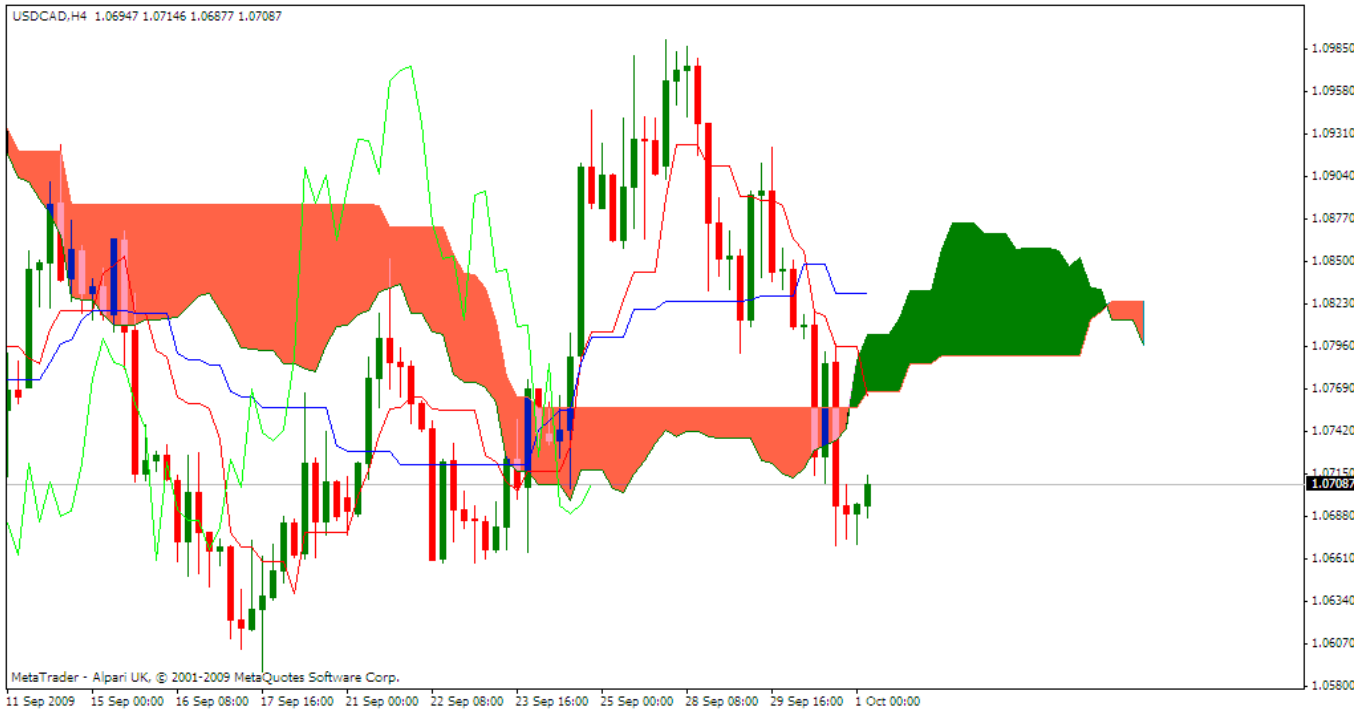
Disclaimer: all the data provided on this sheet are based upon the Ichimoku system analysis, all statements and expressions in here are personal opinions, and not meant as investment advice or solicitation.

Forex Factory: <http://www.forexfactory.com/showthread.php?t=190646>

Reports Archive: <http://www.4shared.com/dir/19807073/7e882875/sharing.html>

Email: KumoWarriors@gmail.com

4Hr. Candlestick Chart



Comment:

We had a weak ts/ks cross in a bearish chart

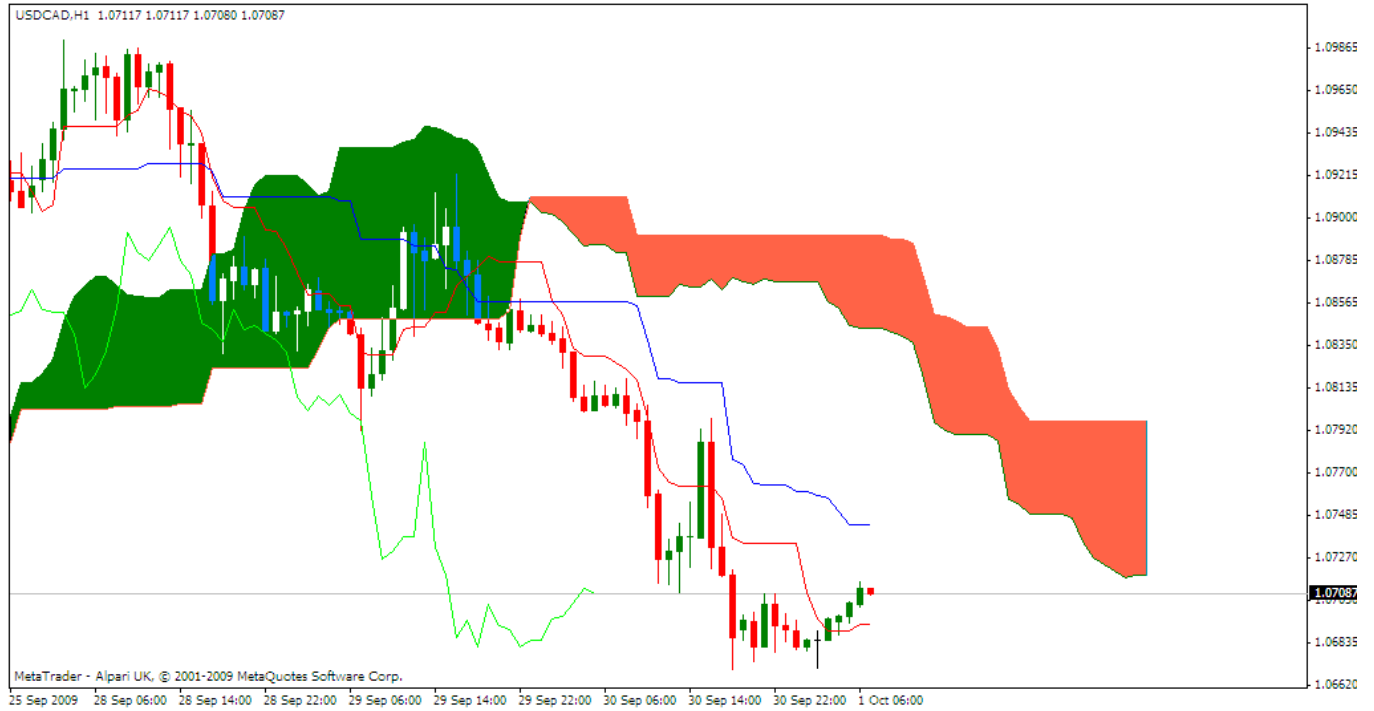
Disclaimer: all the data provided on this sheet are based upon the Ichimoku system analysis, all statements and expressions in here are personal opinions, and not meant as investment advice or solicitation.

Forex Factory: <http://www.forexfactory.com/showthread.php?t=190646>

Reports Archive: <http://www.4shared.com/dir/19807073/7e882875/sharing.html>

Email: KumoWarriors@gmail.com

1Hr. Candlestick Chart



Comment:

Strong bearish chart here

Trends	
Major Trend (D)	SHORT
Median Trend (H4)	SHORT
Minor Trend (H1)	SHORT

Conclusion:

Short position are preferred to test bottom of the range

Disclaimer: all the data provided on this sheet are based upon the Ichimoku system analysis, all statements and expressions in here are personal opinions, and not meant as investment advice or solicitation.

Forex Factory: <http://www.forexfactory.com/showthread.php?t=190646>

Reports Archive: <http://www.4shared.com/dir/19807073/7e882875/sharing.html>

Email: KumoWarriors@gmail.com