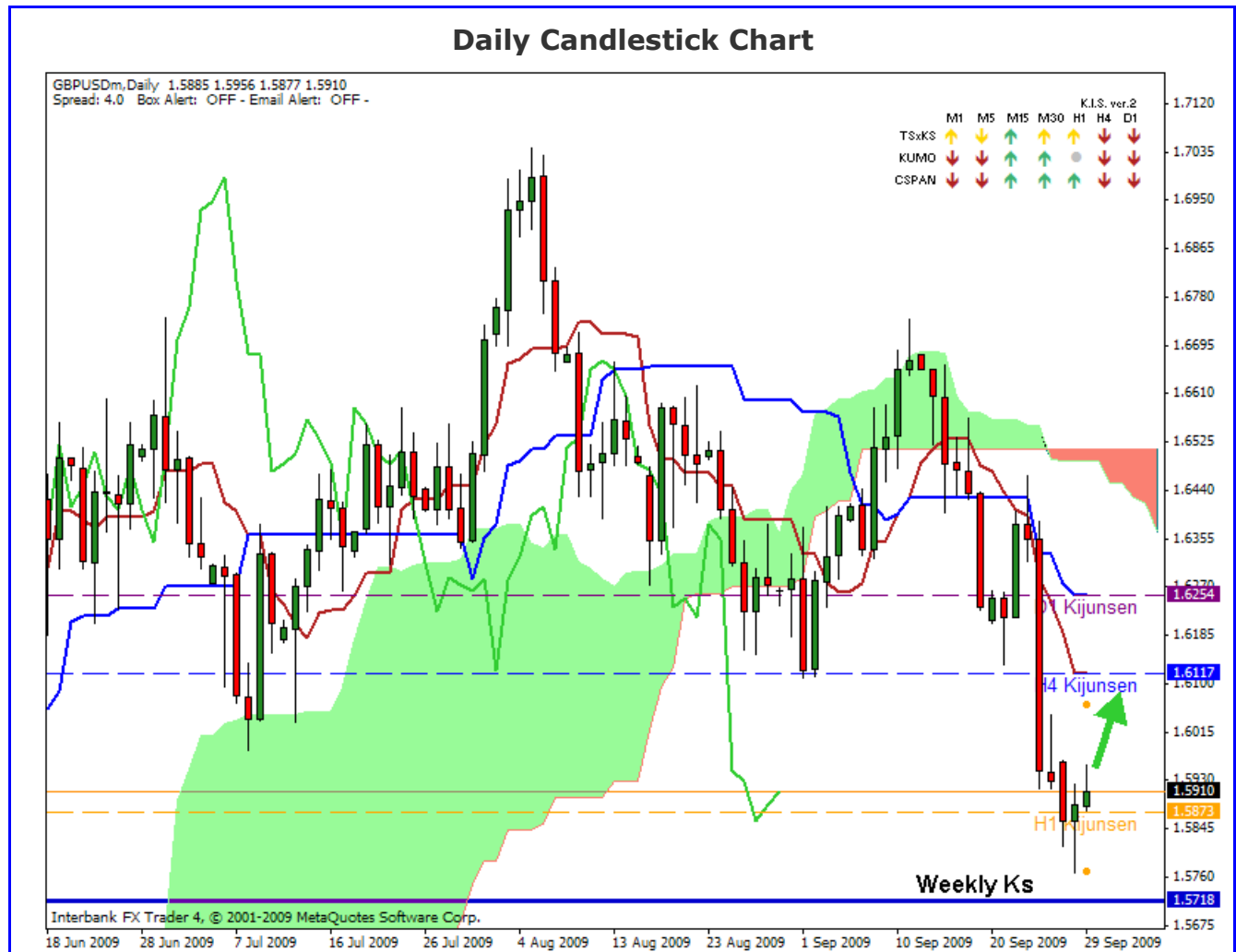


Ichimoku Kinko Hyo

Kumo Warriors

Technical Analysis

23:45 GMT 28 September 2009
GBPUSD



Comment:

As mentioned in my Weekly Report we needed to be cautious of the Weekly Ks... We just missed it by 45pips....Remember that any kind of S/R line is really a zone... not a hard number... A possible scenario is that price may now test the 4 hour Ks...

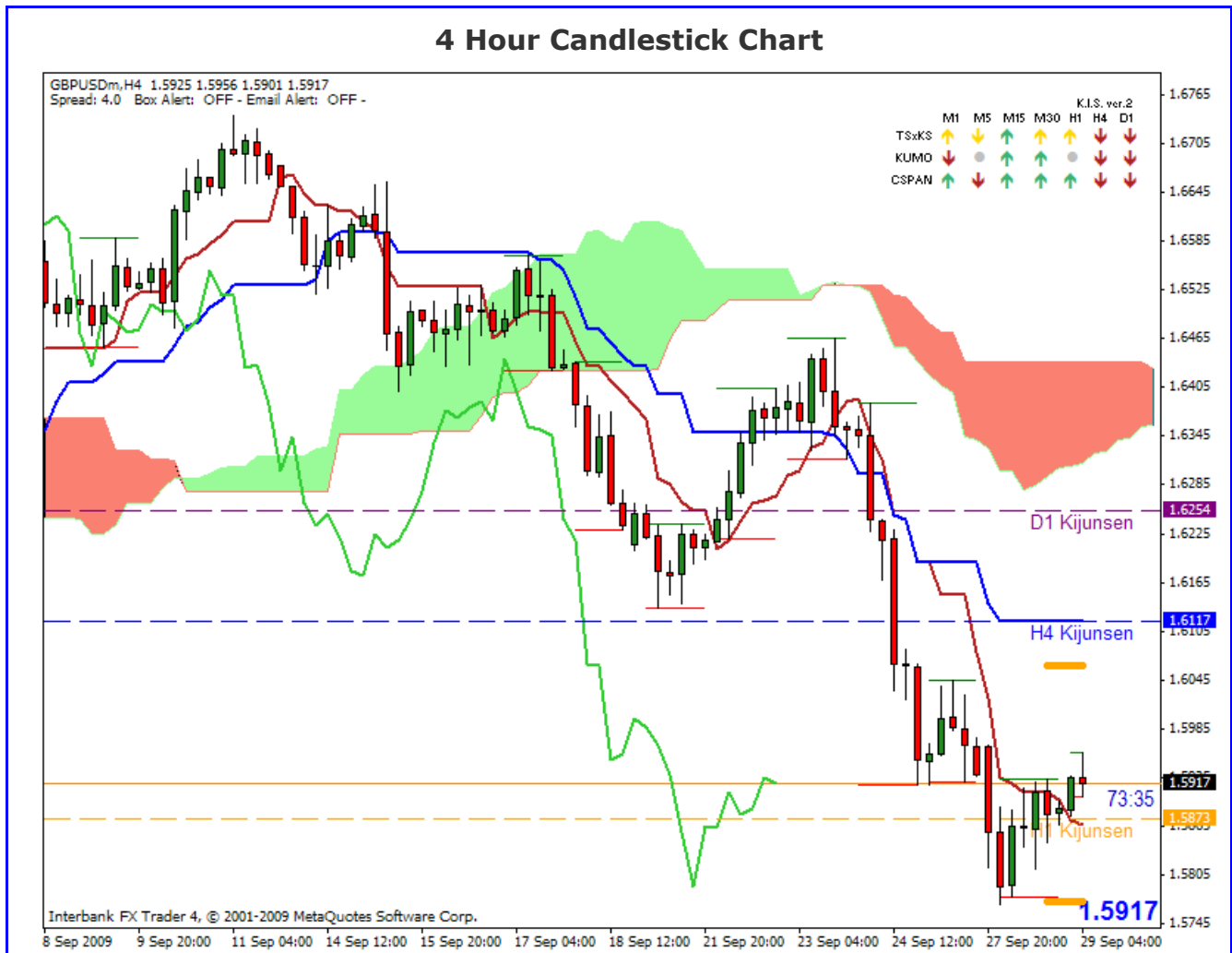
Disclaimer: all the data provided on this sheet are based upon the Ichimoku system analysis, all statements and expressions in here are personal opinions, and not meant as investment advice or solicitation.

Forex Factory: <http://www.forexfactory.com/showthread.php?t=190646>

Reports Archive: <http://www.4shared.com/dir/19807073/7e882875/sharing.html>

Email: KumoWarriors@gamil.com

4 Hour Candlestick Chart



Comment:

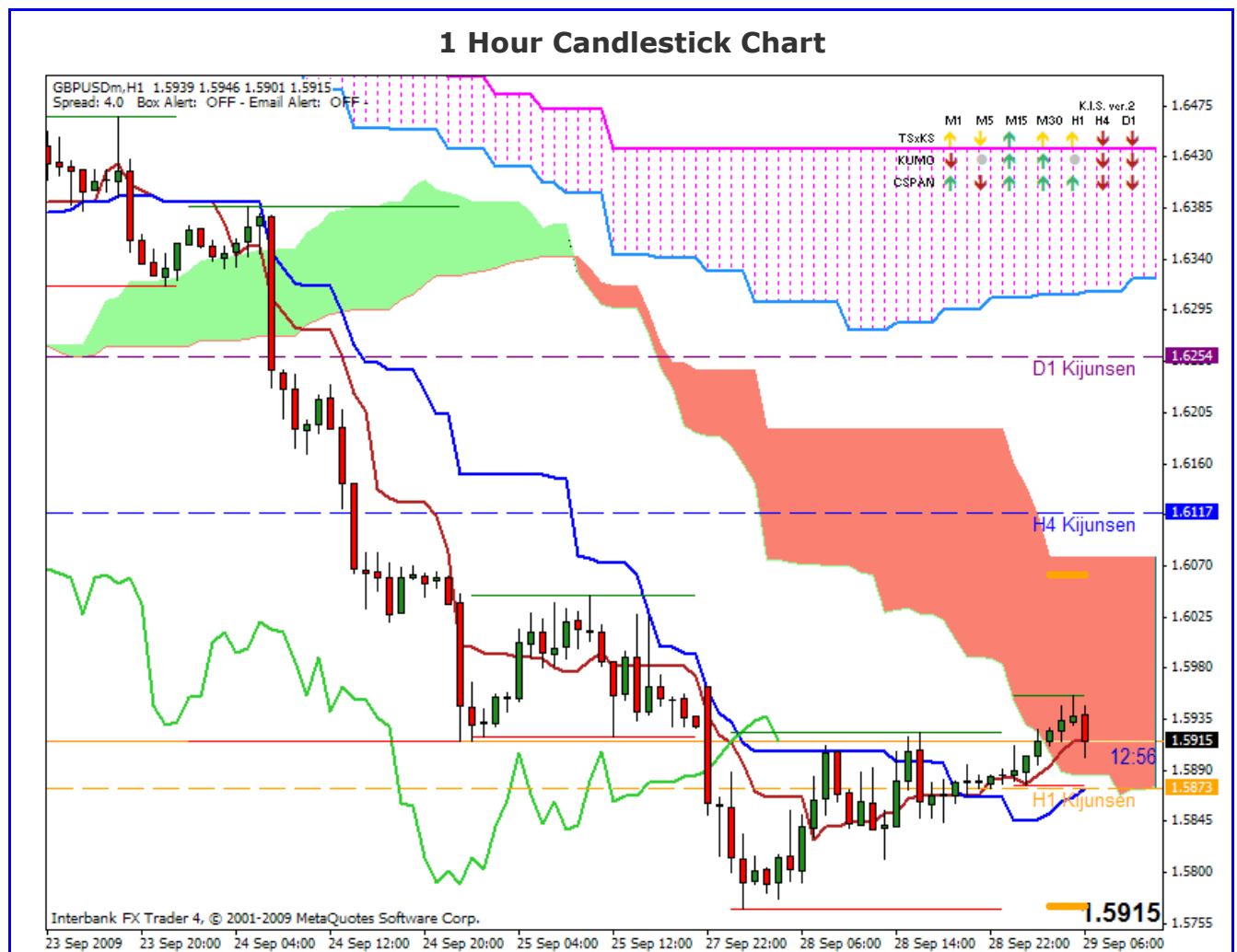
The 4 hour chart is very bearish... Price has traded down quit a lot so we can expect a pullback or normalization to take place.... possibly to the 4 hour Ks or even the Daily Ks...

Disclaimer: all the data provided on this sheet are based upon the Ichimkou system analysis, all statements and expressions in here are personal opinions, and not meant as investment advice or solicitation.

Forex Factory: <http://www.forexfactory.com/showthread.php?t=190646>

Reports Archive: <http://www.4shared.com/dir/19807073/7e882875/sharing.html>

Email: KumoWarriors@gmail.com



Comment:

Price has hit the 1 hour Kumo which is our first level of resistance...

Should price roll over and trade below the 1 hour Ks we can start looking for Short Entries again...

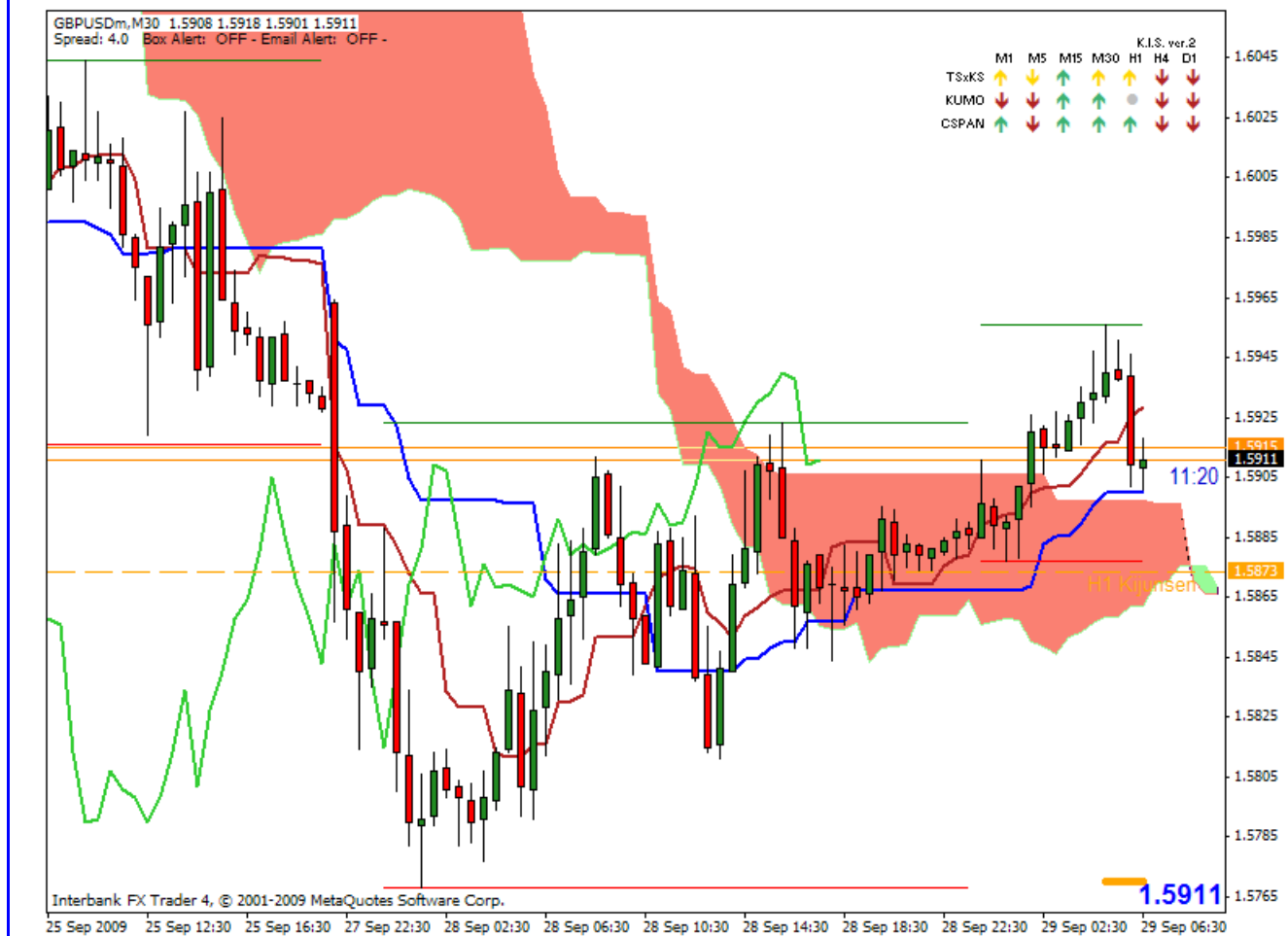
Disclaimer: all the data provided on this sheet are based upon the Ichimkou system analysis, all statements and expressions in here are personal opinions, and not meant as investment advice or solicitation.

Forex Factory: <http://www.forexfactory.com/showthread.php?t=190646>

Reports Archive: <http://www.4shared.com/dir/19807073/7e882875/sharing.html>

Email: KumoWarriors@gamil.com

30 Min. Candlestick Chart



Comments:

Price action is trading above the 30 min. Kumo...I want to see it below before I enter short trades....

Conclusion:

I am still bearish on this pair as price is trading below the Daily and 4 hour Kumos and Ks's....

Should price close below the 1 hour Ks it will also be below the 30min. Kumo... At this point I will be looking for a 5min. Strong signal for entry...

Our first area of concern to watch out for would be yesterday's low and the Weekly Kumo... If we break these levels we should have another nice bearish run..!!!!

But remember we could still see a testing of the 4 hour Ks and/or Daily Ks

Disclaimer: all the data provided on this sheet are based upon the Ichimkou system analysis, all statements and expressions in here are personal opinions, and not meant as investment advice or solicitation.

Forex Factory: <http://www.forexfactory.com/showthread.php?t=190646>

Reports Archive: <http://www.4shared.com/dir/19807073/7e882875/sharing.html>

Email: KumoWarriors@gamil.com