

Stratman_MiniChart_v10.ex4

Stratman Mini Chart Indicator Instruction Manual



Version 1.0
stratman (Forex Factory)

Introduction

If you are like me, you like to view price action in multiple time frames e.g. Daily, 4 hour, 1 hour, 15 min etc. I wanted a way of dragging a currency symbol on to a window and have multiple time frame charts appear simultaneously in that window. This birthed the idea of "Mini Charts".

In the following discussion, I refer to a "MT4 Window" often. This is a typical MT4 window where price action is displayed for a currency or an indicator window. Mini Charts are smaller charts that can be added to these MT4 windows.

Mini Charts are displayed as bars or candles via the **CandleMode** variable.



Figure 1: Mini Chart...CandleMode=true



Figure 2: Mini Chart...CandleMode=false

Use the **Corner** variable to place a mini chart in any corner of a MT4 window. Note that all dimensions become 'relative' to the corner you choose except the Heading text. Variables **HeadingX** and **HeadingY** are used to position the heading of a mini chart relative to its own top left corner. Unfortunately, one 'feature' of MT4 is that objects end up with different 'anchor' points when the corner is changed. In the following diagram, **Corner** values are shown and a '+' represents the heading anchor point for each mini chart.

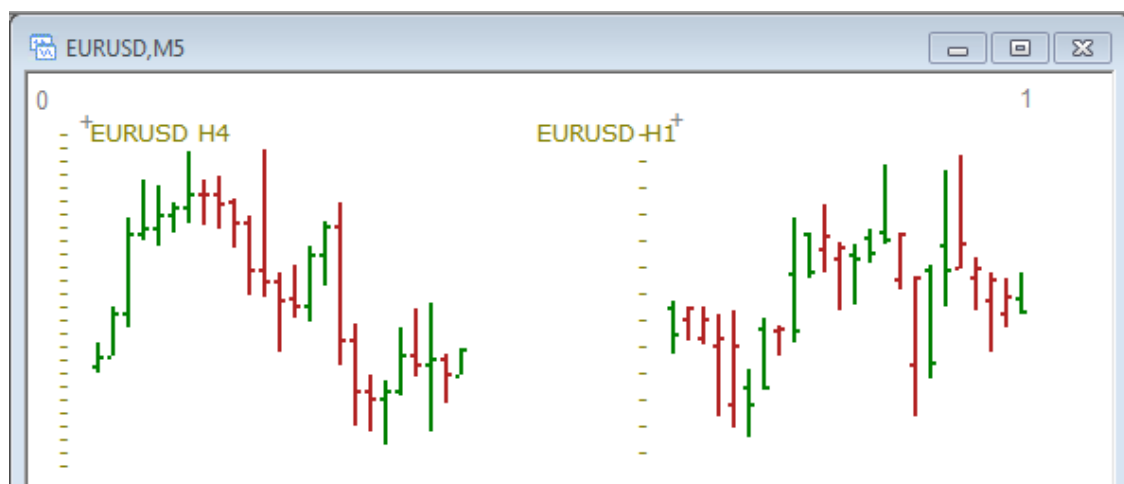


Figure 3: Corner Numbers and Heading Anchor Points (Top Half)

Stratman_MiniChart_v10.ex4

In figures 3 & 4, the value of **HeadingX** is 20 pixels. It should be clear that **HeadingX** is relative to the left side of each respective mini chart i.e. the anchors ('+') are 20 pixels from the left side of each chart. **HeadingX**, **HeadingY** will need to be adjusted whenever a mini chart is changed to a different corner.



Figure 4: Corner Numbers and Heading Anchor Points (Bottom Half)

Also note the scale on the charts. '.' Represents 1 pip and '-' represents 10 pips.

Scaling is adjusted via the **ATRBars** and **ATRPixelsY** variables. **ATRBars** is the number of bars to calculate the 'Average True Range' i.e. volatility. **ATRPixelsY** is used for the number of Y-axis pixels that will represent the ATR. See the diagrams.



Figure 5: ATRPixelsY=20



Figure 6: ATRPixelsY=40

Stratman_MiniChart_v10.ex4

Modes

The **Mini Chart** indicator has two modes: **single** and **multi** mode. The indicator is always attached to the main chart window. Once attached, you can select which window the mini chart indicator displays via the **WindowNumber** variable.

Single Mode

Single Mode is where a single mini chart indicator instance creates one mini chart on a window of your choice. This mode is limited to the currency of the parent chart window and has an adjustable time frame via the **TimeFrame** variable. You can attach multiple instances of the mini chart indicator to the main chart window as long as each is set to a unique time frame.

Figures 3 & 4 show 4 single mode indicators attached to the main chart window as follows ...:

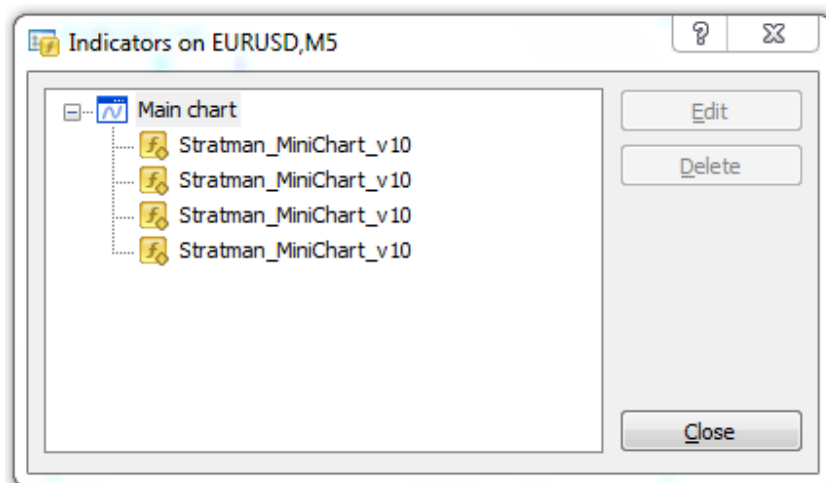


Figure 7: 4 Single Mode Mini Charts attached to a window

Multi Mode

Multi Mode is a very versatile mode as it allows up to 60 charts of multiple currencies and time frames to be viewed. Each of the possible 60 charts must have a unique currency symbol and time frame combination. The mini charts will be displayed in a grid of user definable rows and columns. Note that all mini charts are updated when the main chart currency receives a tick. If you are using multiple currencies, ensure the main window has a currency that receives ticks often e.g. EURUSD.

Multi Mode will be discussed in more detail in section 2 of variables.

Stratman_MiniChart_v10.ex4

Variables

Mini Chart variables offer huge flexibility to the user. Because of this, the list of variables may appear quite daunting. Plenty of Heading and Comment variables have been added for the sole purpose of documenting the variable list.

Section 1

Most variables in this first section are for both single mode and multi mode (with the exception of TimeFrame only being for single mode)

Timeframe: Time Frame of Mini Chart when single mode ...MN1, W1, D1, H4, H1, M30, etc

Corner: 0=TopLeft, 1=TopRight, 2=BottomLeft, 3=BottomRight

MultiMode: true=MultiMode, false=SingleMode

CandleMode: true=Candles, false=Bars

BarsToDisplay: number of bars to display

ATRBars: number of bars to calculate ATR (Average True Range)

ATRPixelsY: number of pixels used for the size of ATR

WickColor: color of candle wicks

BullBarColor: color of Bull bars

BearBarColor: color of Bear bars

ScaleColor: color of scale

WindowNumber: number of window to display the mini chart

CornerX: distance from MT4 window corner X axis (pixels)

CornerY: distance from MT4 window corner Y axis (pixels)

Width: width of mini chart (pixels)

Height: height of mini chart (pixels)

HeadingX: X offset from mini chart top left to heading text *anchor* (pixels)

HeadingY: Y offset from mini chart top left to heading text *anchor* (pixels)

ScaleStartY: Y offset from minichart top to start of scale (pixels)

BarSpacingX: distance between bars (pixels)

HeadingFontName: heading font

HeadingFontSize: heading size

Stratman_MiniChart_v10.ex4

HeadingFontColor: heading color

Section 2

This section is for multi mode only.

Columns: number of mini charts per row

Rows: number of mini charts per column

SpacingColumns: space between mini charts in each row i.e. X axis

SpacingRows: space between mini charts in each column i.e. Y axis

Symbolnn: mini chart symbol (currency)

TimeFramenn: mini chart Time Frame...MN1, W1, D1, H4, H1, M30, etc

In multimode, mini charts are laid out in a grid of **Columns** x **Rows** with spacing of **SpacingColumns** and **SpacingRows**.

For example 3 columns by 2 rows will use 6 Symbolnn/TimeFramenn combinations. The layout changes dependent on the **Corner** variable chosen.

Corner = 0 (Top Left)

Symbol01	Symbol02	Symbol03
Symbol04	Symbol05	Symbol06

Corner = 1 (Top Right)

Symbol03	Symbol02	Symbol01
Symbol06	Symbol05	Symbol04

Corner = 2 (Bottom Left)

Symbol04	Symbol05	Symbol06
Symbol01	Symbol02	Symbol03

Corner = 3 (Bottom Right)

Symbol06	Symbol05	Symbol04
Symbol03	Symbol02	Symbol01

Stratman_MiniChart_v10.ex4

Default Values of Variables

Type	Variable	Default
string	Heading_SingleMode	## Single Mode Parameters ##
string	Comment_TimeFrame	- MN1,W1,D1,H4,H1,M30,M15,etc -
string	TimeFrame	H4
string	Comment_Corner	- TopLeft=0,TR=1,BL=2,BR=3 -
Int	Corner	0
string	Heading_ChartParam	## Chart Parameters ##
bool	MultiMode	false
bool	CandleMode	true
int	BarsToDisplay	16
int	ATRBars	22
int	ATRPixelsY	40
color	WickColor	138,138,0
color	BullBarColor	Green
color	BearBarColor	FireBrick
color	ScaleColor	Olive
string	Comment_Positioning	- Positioning (in Pixels) -
int	WindowNumber	0
int	CornerX	32
int	CornerY	230
int	Width	130
int	Height	200
int	HeadingX	100
int	HeadingY	0
int	ScaleStartY	20
int	BarSpacingX	8
string	Comment_Fonts	- Font Parameters -
string	HeadingFontName	Verdana
int	HeadingFontSize	10
color	HeadingFontColor	Olive
string	Heading_MultiMode	## MultiMode Parameters ##
Int	Columns	6
Int	Rows	1
int	SpacingColumns	20
int	SpacingRows	20
string	Comment_Symbols	- to use chart Symbol() -
string	Comment_Symbols1	- leave Symbol## blank. -
string	Comment_TimeFrames	- Valid TimeFrame Values: -
string	Comment_TimeFrames1	- MN1,W1,D1,H4,H1,M30,M15,etc -
string	Comment_TimeFrames2	- Leave Blank for no chart -
string	Symbol01	
string	TimeFrame01	D1
string	Symbol02	
string	TimeFrame02	H4
string	Symbol03	
string	TimeFrame03	H1
string	Symbol04	
string	TimeFrame04	M15
string	Symbol05	
string	TimeFrame05	M5
string	Symbol06	
string	TimeFrame06	M1
string	Symbol07	

Stratman_MiniChart_v10.ex4

string	TimeFrame07
string	...
string	...
string	...
string	Symbol59
string	TimeFrame59
string	Symbol60
string	TimeFrame60