

Trade Report

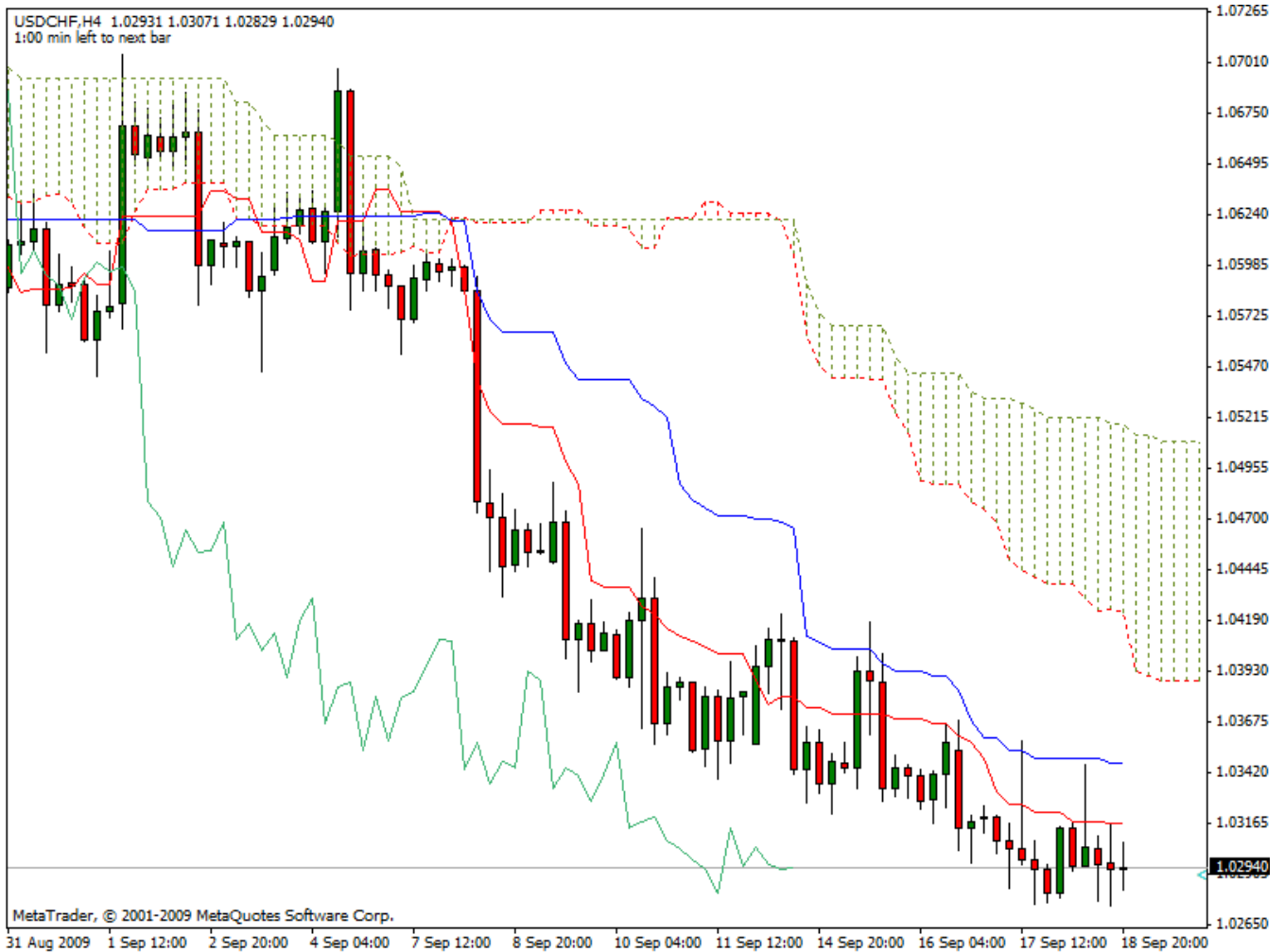
Ichimoku Kinko Hyo

Kumo Warriors

Technical Analysis

16 September 2009
USD/CHF

4Hrs Candlestick Chart



Comment: Bearish weakness on 4Hrs chart , support the short view for the pair

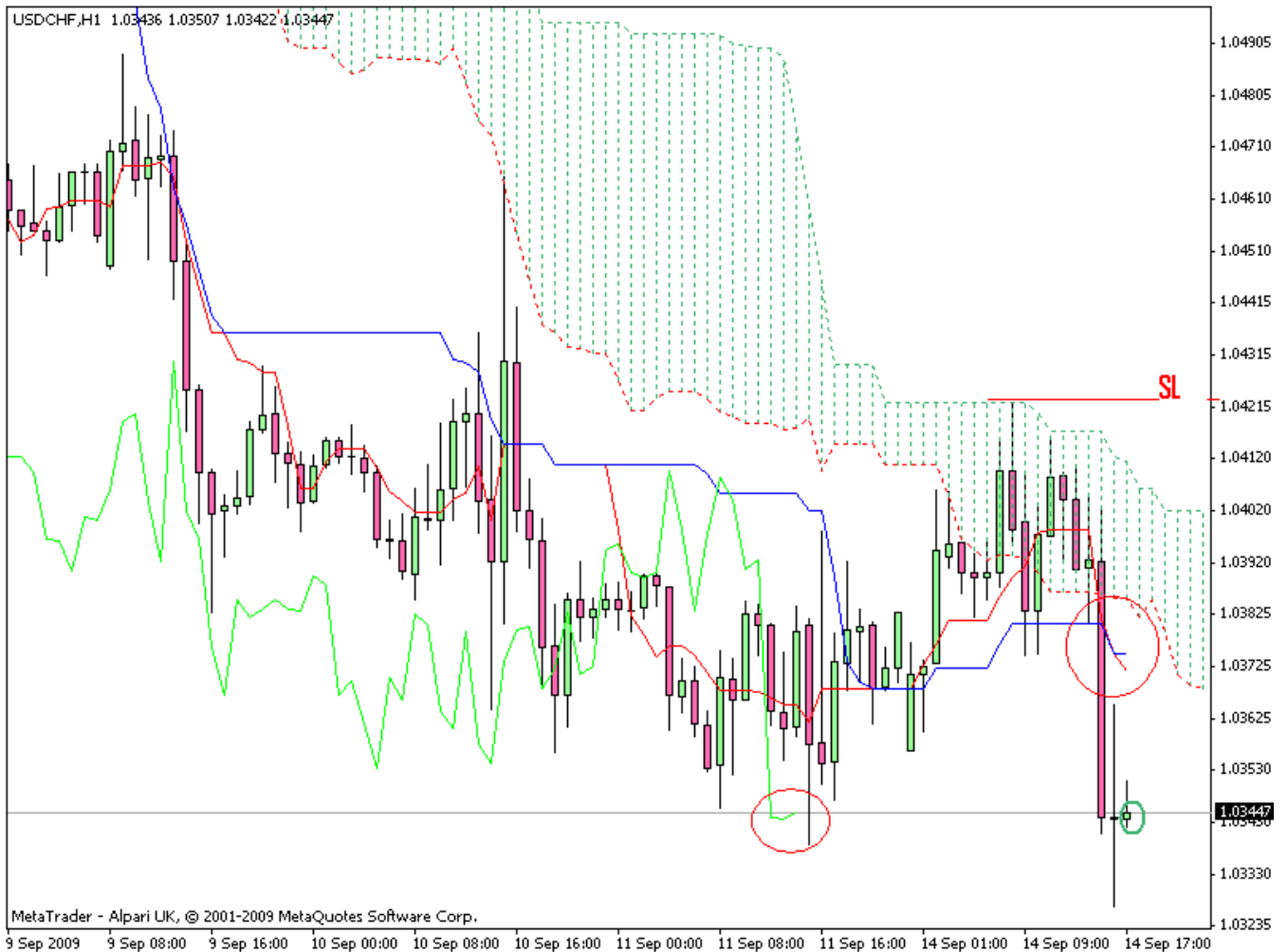
Disclaimer: all the data provided on this sheet are based upon the Ichimoku system analysis, all statements and expressions in here are personal opinions, and not meant as investment advice or solicitation.

Forex Factory: <http://www.forexfactory.com/showthread.php?t=190646>

Reports Archive: <http://www.4shared.com/dir/19807073/7e882875/sharing.html>

Email: KumoWarriors@gamil.com

1Hr Candlestick Chart



Comment: a strong Ts Ks crossing after the close below 1Hr Kumo.(entry)

Trends

Major Trend (D)	Bearish
Median Trend (4H)	Beraish
Minor Trend (1h)	Bearish

Conclusion: entry @ 1.0343, SL 1.425, TP @1.0305

Disclaimer: all the data provided on this sheet are based upon the Ichimkou system analysis, all statements and expressions in here are personal opinions, and not meant as investment advice or solicitation.

Forex Factory: <http://www.forexfactory.com/showthread.php?t=190646>

Reports Archive: <http://www.4shared.com/dir/19807073/7e882875/sharing.html>

Email: KumoWarriors@gamil.com