

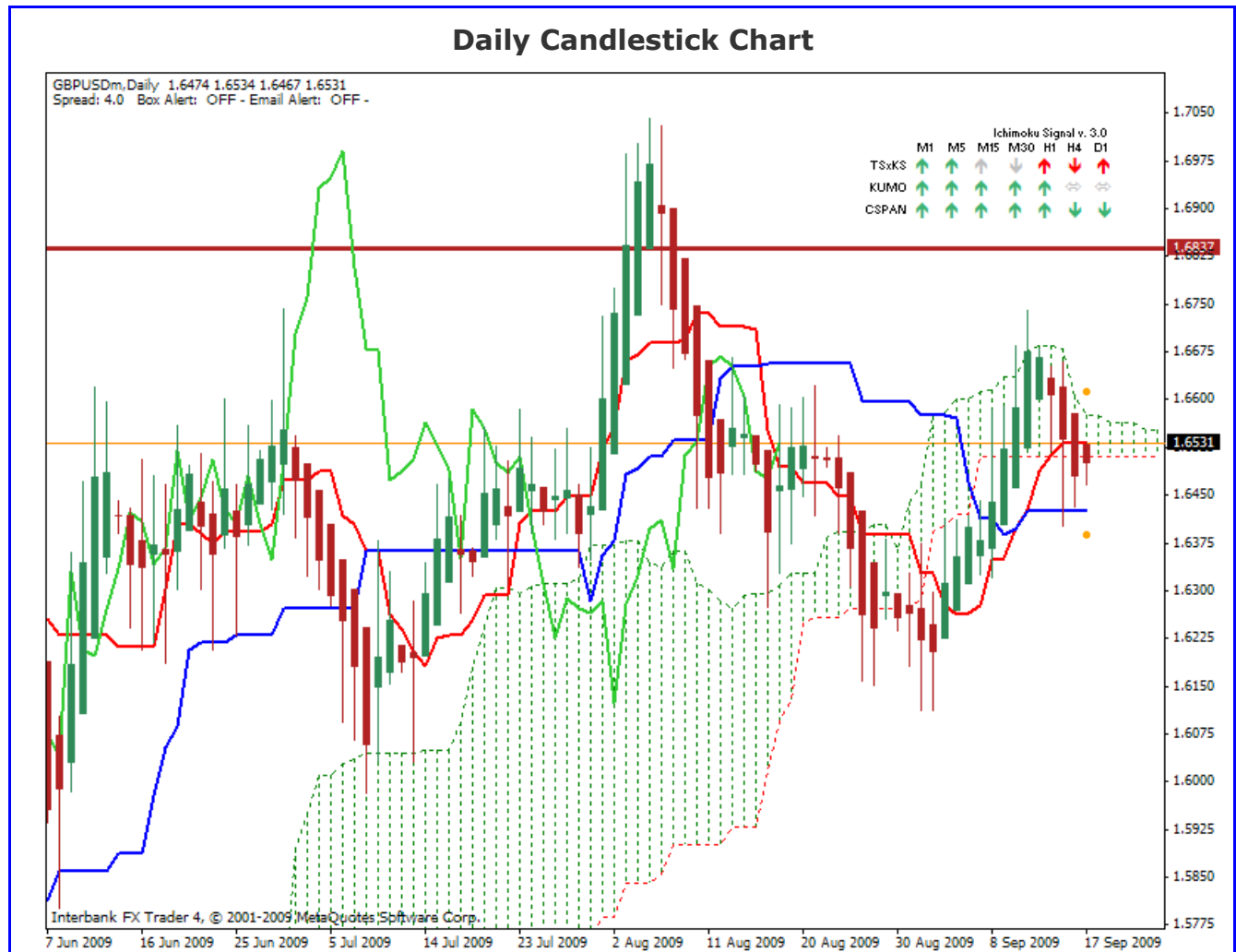
Daily Market Commentary

Ichimoku Kinko Hyo

Kumo Warriors

Technical Analysis

06:30 GMT 17 September 2009
GBPUSD



Comment:

Okay, this Daily chart is just a mess... I need to see Price close below the Ks to consider Short trades. If price can close above the Kumo I will look for Long trades. Until either one of those conditions is met I will stay away from this Pair.

Disclaimer: all the data provided on this sheet are based upon the Ichimoku system analysis, all statements and expressions in here are personal opinions, and not meant as investment advice or solicitation.

Forex Factory: <http://www.forexfactory.com/showthread.php?t=190646>

Reports Archive: <http://www.4shared.com/dir/19807073/7e882875/sharing.html>

Email: KumoWarriors@gamil.com