

Daily Market Commentary

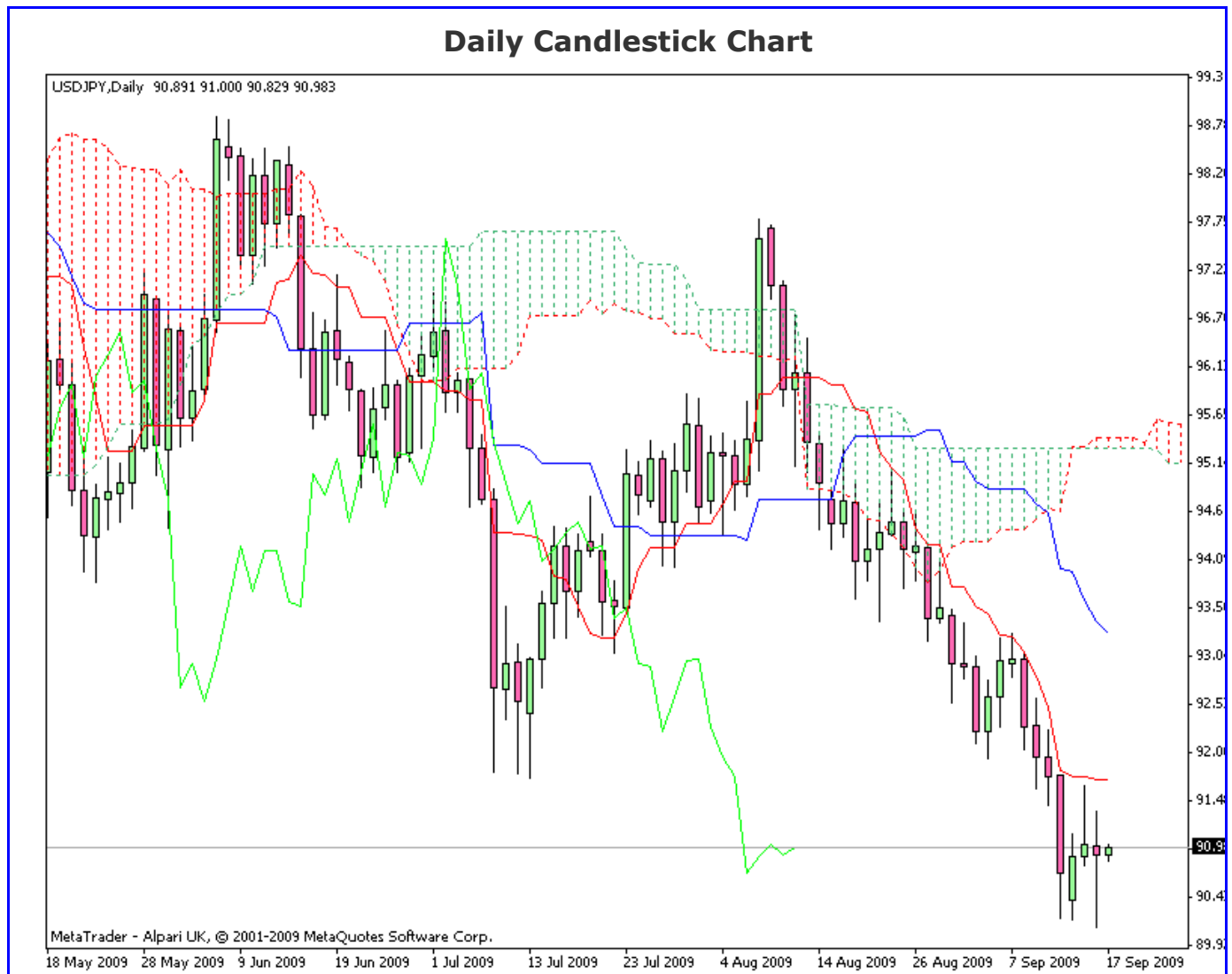
Ichimoku Kinko Hyo

Kumo Warriors

Technical Analysis

17 September 2009

USD/JPY



Comment: Another test for 90.1x area, the price still under pressure, break below 90 will add more pressure on the pair, only a daily closing above Ts will stop this view.

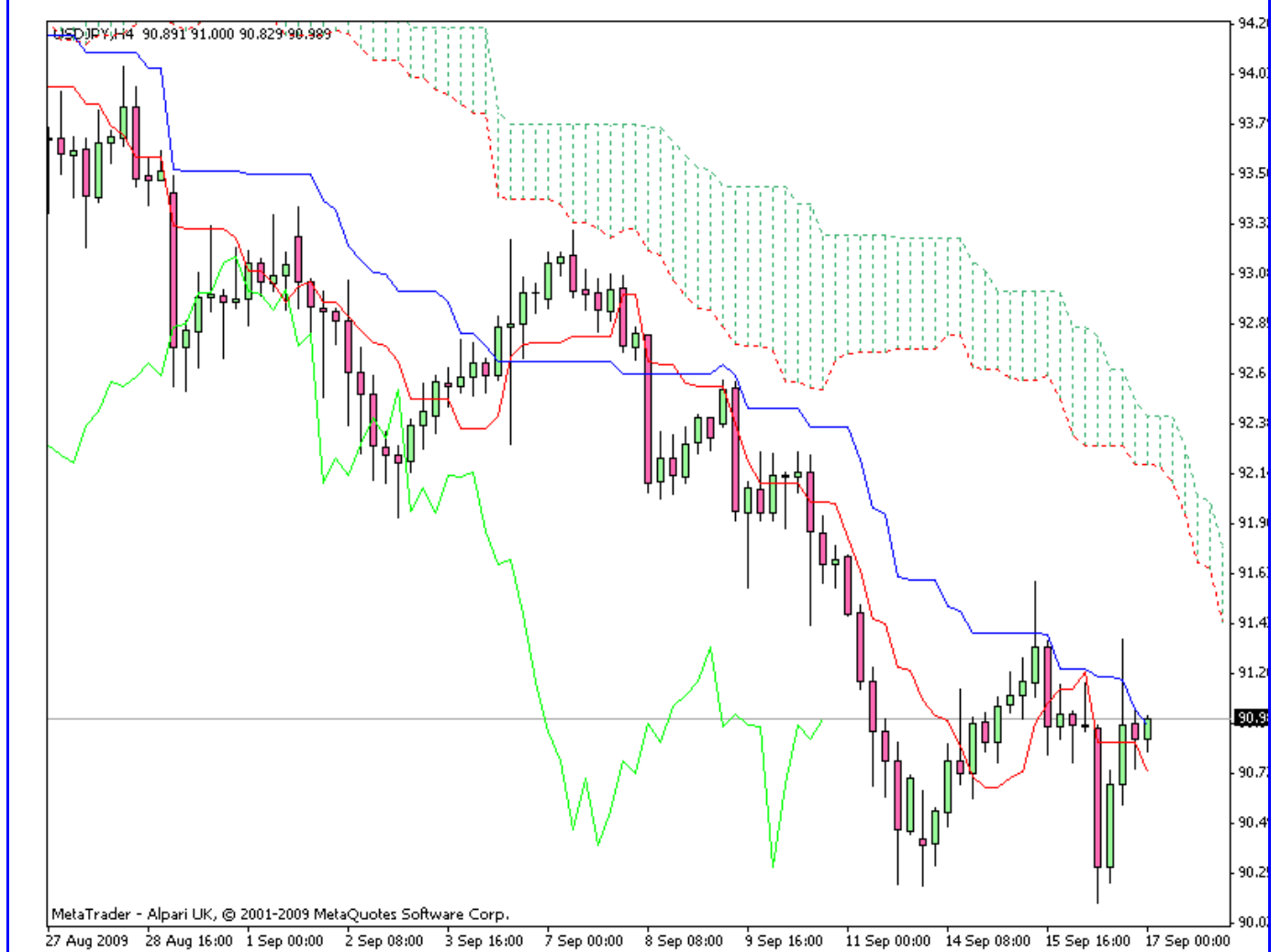
Disclaimer: all the data provided on this sheet are based upon the Ichimoku system analysis, all statements and expressions in here are personal opinions, and not meant as investment advice or solicitation.

Forex Factory: <http://www.forexfactory.com/showthread.php?t=190646>

Reports Archive: <http://www.4shared.com/dir/19807073/7e882875/sharing.html>

Email: KumoWarriors@gmail.com

4Hrs Candlestick Chart



Comment: Ks still holding, yesterday sell off from 91.3x area added confirms the bearish view, a close below Ts will open the way for testing the 90 low and may be a break .

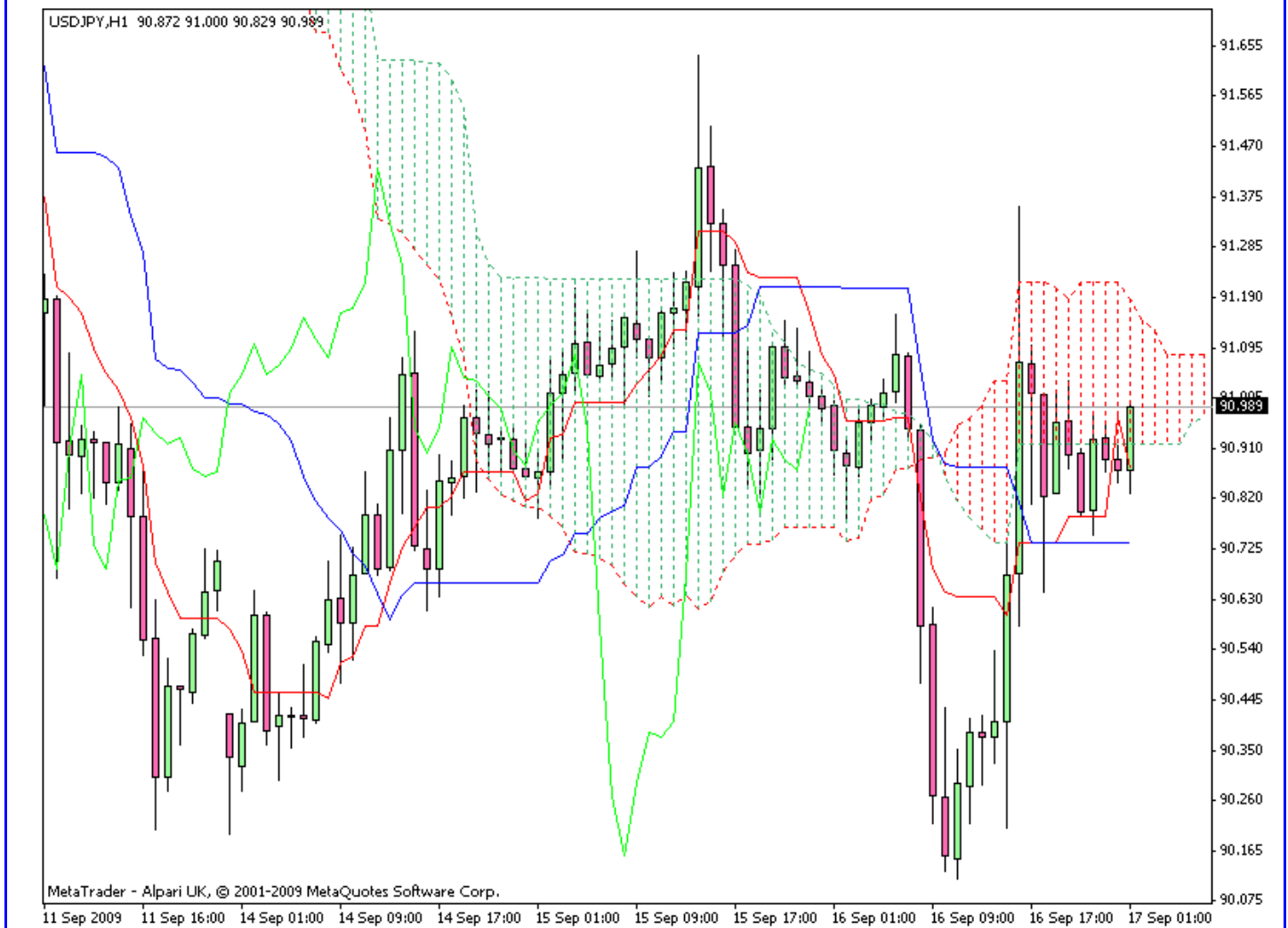
Disclaimer: all the data provided on this sheet are based upon the Ichimoku system analysis, all statements and expressions in here are personal opinions, and not meant as investment advice or solicitation.

Forex Factory: <http://www.forexfactory.com/showthread.php?t=190646>

Reports Archive: <http://www.4shared.com/dir/19807073/7e882875/sharing.html>

Email: KumoWarriors@gmail.com

1Hr Candlestick Chart



Comment: Strong resistance at 91.3x area managed to hold and sent the pair down the Kumo again , a closing below Ks will open the way for another down move

Trends	
Major Trend (D)	Bearish
Median Trend (4hr)	Bearish
Minor Trend (1Hr)	Bearish

Conclusion: will short after a closing below the Kumo with a strong signal on 5 Mins

Disclaimer: all the data provided on this sheet are based upon the Ichimoku system analysis, all statements and expressions in here are personal opinions, and not meant as investment advice or solicitation.

Forex Factory: <http://www.forexfactory.com/showthread.php?t=190646>

Reports Archive: <http://www.4shared.com/dir/19807073/7e882875/sharing.html>

Email: KumoWarriors@gamil.com