

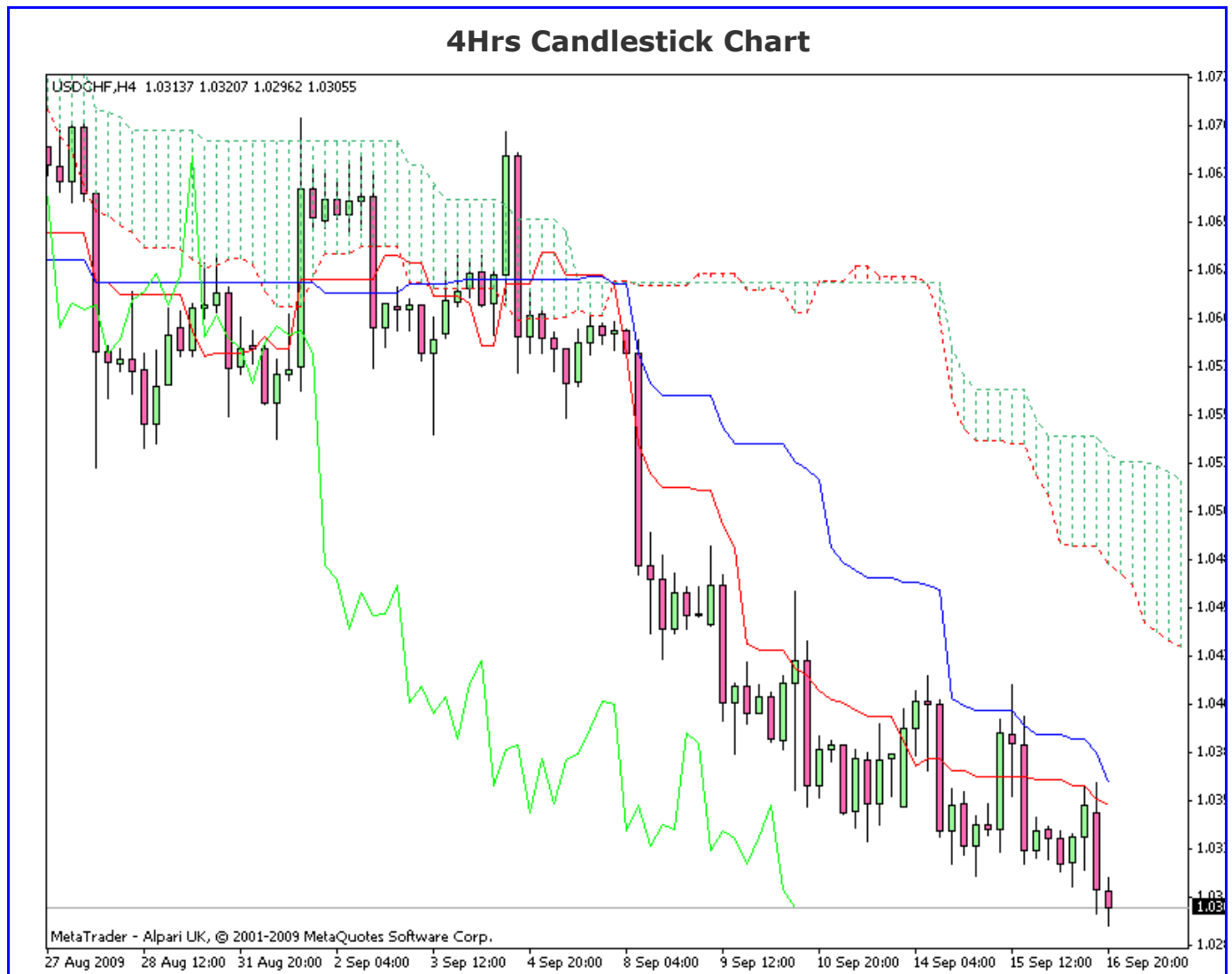
Trade Report

Ichimoku Kinko Hyo

Kumo Warriors

Technical Analysis

16 September 2009
USD/CHF



Comment: Bearish weakness on 4Hrs chart , support the short view for the pair

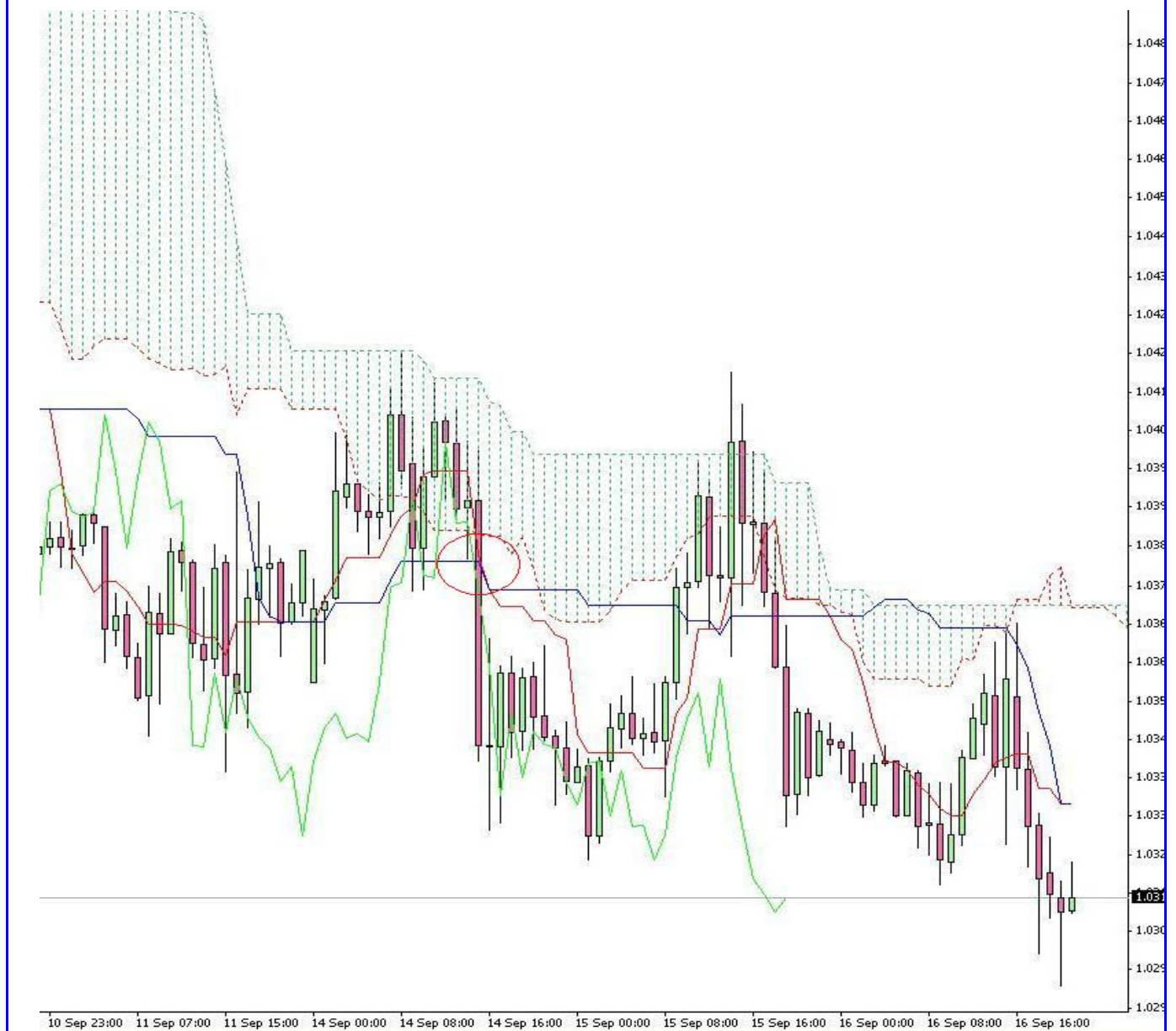
Disclaimer: all the data provided on this sheet are based upon the Ichimoku system analysis, all statements and expressions in here are personal opinions, and not meant as investment advice or solicitation.

Forex Factory: <http://www.forexfactory.com/showthread.php?t=190646>

Reports Archive: <http://www.4shared.com/dir/19807073/7e882875/sharing.html>

Email: KumoWarriors@gmail.com

1Hr Candlestick Chart



Comment: Position was opened after a strong Ts KS cross, consolidation state for 2 days and then closed the position with the first level of support

Conclusion: opened @ 1.0357 SI @ 1.0422 TP @ 1.0319

Disclaimer: all the data provided on this sheet are based upon the Ichimoku system analysis, all statements and expressions in here are personal opinions, and not meant as investment advice or solicitation.

Forex Factory: <http://www.forexfactory.com/showthread.php?t=190646>

Reports Archive: <http://www.4shared.com/dir/19807073/7e882875/sharing.html>

Email: KumoWarriors@gamil.com