

Real prices and trade volumes

Read time & sales in MetaTrader 5 and become a successful market trader

[DOW!](#)



WhiteEagle 2014.05.01 00:21

EN

I've modified the code found here -

https://docs.mql4.com/constants/objectconstants/enum_object/obj_hline

25

And, I've successfully increased the width of the horizontal line to 20



I can move it where I wish on the chart. I'm trying to create horizontal lines at the places where Market Profile shows Value, etc.

My problem is that I cannot create more than one object with the following code:

```
#property strict
//--- description
#property description "Script draws \"Horizontal Line\" graphical object."
#property description "Anchor point price is set in percentage of the height of"
#property description "the chart window."
//--- display window of the input parameters during the script's launch
#property script_show_inputs
//--- input parameters of the script
input string      InpName="HLine";           // Line name
input int         InpPrice=25;                // Line price, %
input color       InpColor=clrMagenta;        // Line color
input ENUM_LINE_STYLE InpStyle=STYLE_SOLID;   // Line style
input int         InpWidth=20;                // Line width
input bool        InpBack=false;              // Background line
input bool        InpSelection=true;           // Highlight to move
input bool        InpHidden=true;             // Hidden in the object list
input long        InpZOrder=0;                // Priority for mouse click
//+-----+
//| Create the horizontal line |
//+-----+
bool HLineCreate(const long      chart_ID=0,           // chart's ID
                 const string    name="HLine",         // line name
                 const int       sub_window=0,         // subwindow index
```

```

        double price=0, // line price
        const color clr=clrMagenta, // line color
        const ENUM_LINE_STYLE style=STYLE_SOLID, // line style
        const int width=20, // line width
        const bool back=false, // in the background
        const bool selection=true, // highlight to move
        const bool hidden=true, // hidden in the object
        const long z_order=0) // priority for mouse

{
//--- create a horizontal line
    if(!ObjectCreate(chart_ID,name,OBJ_HLINE,sub_window,0,price))
    {
        Print(__FUNCTION__,
            ": failed to create a horizontal line! Error code = ",GetLastError());
        return(false);
    }
//--- set line color
    ObjectSetInteger(chart_ID,name,OBJPROP_COLOR,clr);
//--- set line display style
    ObjectSetInteger(chart_ID,name,OBJPROP_STYLE,style);
//--- set line width
    ObjectSetInteger(chart_ID,name,OBJPROP_WIDTH,width);
//--- display in the foreground (false) or background (true)
    ObjectSetInteger(chart_ID,name,OBJPROP_BACK,back);
//--- enable (true) or disable (false) the mode of moving the line by mouse
//--- when creating a graphical object using ObjectCreate function, the object
//--- highlighted and moved by default. Inside this method, selection parameter
//--- is true by default making it possible to highlight and move the object
    ObjectSetInteger(chart_ID,name,OBJPROP_SELECTABLE,selection);
    ObjectSetInteger(chart_ID,name,OBJPROP_SELECTED,selection);
//--- hide (true) or display (false) graphical object name in the object list
    ObjectSetInteger(chart_ID,name,OBJPROP_HIDDEN,hidden);
//--- set the priority for receiving the event of a mouse click in the chart
    ObjectSetInteger(chart_ID,name,OBJPROP_ZORDER,z_order);
//--- successful execution
    return(true);
}
//+-----+
//| Script program start function |
//+-----+
void OnStart()
{
//--- check correctness of the input parameters
    if(InpPrice<0 || InpPrice>100)
    {
        Print("Error! Incorrect values of input parameters!");
        return;
    }
//--- price array size
    int accuracy=1000;
//--- array for storing the price values to be used
//--- for setting and changing line anchor point's coordinates
    double price[];
//--- memory allocation
    ArrayResize(price,accuracy);
//--- fill the array of prices
//--- find the highest and lowest values of the chart
    double max_price=ChartGetDouble(0,CHART_PRICE_MAX);
    double min_price=ChartGetDouble(0,CHART_PRICE_MIN);
//--- define a change step of a price and fill the array
    double step=(max_price-min_price)/accuracy;
    for(int i=0;i<accuracy;i++)
        price[i]=min_price+i*step;
//--- define points for drawing the line
    int p=InpPrice*(accuracy-1)/100;

```

```
//--- create a horizontal line
if(!HLineCreate(0,InpName,0,price[p],InpColor,InpStyle,InpWidth,InpBack,
    InpSelection,InpHidden,InpZOrder))
{
    return;
}
//--- redraw the chart and wait for 1 second
ChartRedraw();
Sleep(1000);
}
```

Any suggestions? How can I edit my code to allow more than one HLINE to be created? Thanks (I'm sure it's a simple problem)

FYI - My chart is an M5 chart using GMMMA Long, GMMMA Short, i-Sessions, Pivot Points - Shifted and Market Profile (EarnForex)

[to pocket](#) | [complain](#) | [reply](#)



Moderator
14422

Keith Watford 2014.05.01 00:43 #1 EN

```
input string      InpName="HLine";      // Line name
input string      InpName2="HLine2";    // Line name
//
//
//
if(!HLineCreate(0,InpName,0,price[p],InpColor,InpStyle,InpWidth,InpBack,
    InpSelection,InpHidden,InpZOrder))
//
//
if(!HLineCreate(0,InpName2,0,price[p],InpColor,InpStyle,InpWidth,InpBack,
    InpSelection,InpHidden,InpZOrder))
```



25

WhiteEagle 2014.05.01 08:39 #2 EN

ok, I see it . . . thanks

Now, is there a way to make it an indefinite number of extra "HLine" entries (maybe changing the "name" input)?

Sorry to be so ignorant, but I'm learning bit by bit. I've modified all of the extensions I used, and I search for appropriate code snippets.



6508

Tjipke de Vries 2014.05.01 10:37 #3 EN

whiteEagle:
ok, I see it . . . thanks

Now, is there a way to make it an indefinite number of extra "HLine" entries (maybe changing the "name" input)?

Sorry to be so ignorant, but I'm learning bit by bit. I've modified all of the extensions I used, and I search for appropriate code snippets.

```
input string      InpName="HLine"+TimeToString(TimeCurrent(),TIME_DATE|TIME_MINUTE|TIME_SECONDS)
```

you only need to name it differently you can use a number, time, price,....

but be sure it is unique and simple to use in your program



25

WhiteEagle 2014.05.01 14:11 #4

EN

ok, thanks . . .

I'll work on that and let you know my success! I'm sure it will work (I can tell by the snippets you both wrote)

You guys (and gals) have been great!

That line . . .

```
input string      InpName="HLine"+TimeToString(TimeCurrent(),TIME_DATE|TIME_MINUTE|TIME_SECONDS)
```

. . . gives me an error . . .

```
'CreateLevels.mq4'
'+'-constant expected      CreateLevels.mq4      9      38
1 error(s), 0 warning(s)
```



6508

Tjipke de Vries 2014.05.01 16:35 #5

EN

whiteEagle:

ok, thanks . . .

I'll work on that and let you know my success! I'm sure it will work (I can tell by the snippets you both wrote)

You guys (and gals) have been great!

That line . . .

. . . gives me an error . . .

sorry, was only concentrating on changing objectname didn't look that quick to 'input' and where it was defined

```
input string      InpName="HLine";          // Line name

void OnStart()
{
//--- check correctness of the input parameters
string      InpName="HLine"+TimeToString(TimeCurrent(),TIME_DATE|TIME_MINUTE|TIME_SECONDS)
```

if you do it this way it works



25

WhiteEagle 2014.05.01 17:00 #6

EN

hmm . . .

It gives me one warning . . .

declaration of 'InpName' hides global declaration at line 9 CreateLevels.mq4

. . . which I understand (not a problem)

And, it allows me to put two (2) lines on the chart, and after "Compile" and "Save as," a second or third time, it allows me to put two more lines.

It needs to be "re-saved" several times before I can put more lines on the chart. I'm wanting to place lines on the chart over a period of time and keep them there.

The lines represent levels of "buy/sell" orders! I'm trying to use Market Profile to identify "liquidity levels" but I want a "band" and not a "fat" line.

I've tried modifying "ChartObjectLines" to get a "fatter" line, but all I can get is "width=5"

```
//+-----+
//| Class CChartObjectTrend. |
//| Purpose: Class of the "Trendline" object of chart. |
//| Derives from class CChartObject. |
//| It is the parent class for all objects that have properties |
//| RAY_LEFT and RAY_RIGHT. |
//+-----+
class CChartObjectTrend : public CChartObject
{
public:
    CChartObjectTrend(void);
    ~CChartObjectTrend(void);

    //--- methods of access to properties of the object
    bool RayLeft(void) const;
    bool RayLeft(const bool new_sel) const;
    bool RayRight(void) const;
    bool RayRight(const bool new_sel) const;

    //--- method of creating the object
    bool Create(long chart_id,const string name,const int window,
                const datetime time1,const double price1,
                const datetime time2,const double price2,
                const ENUM_LINE_STYLE style=STYLE_SOLID,const int w,
                const bool back=false,const bool selection=true,
                const bool hidden=true,const long z_order=0);

    //--- method of identifying the object
    virtual int Type(void) const { return(OBJ_TREND); }

    //--- methods for working with files
    virtual bool Save(const int file_handle);
    virtual bool Load(const int file_handle);
};

//+-----+
//| Constructor |
//+-----+
CChartObjectTrend::CChartObjectTrend(void)
{
}

//+-----+
//| Destructor |
```

```
//+-----+
CChartObjectTrend::~CChartObjectTrend(void)
{
}
//+-----+
//| Create object "Trendline" |
//+-----+
bool CChartObjectTrend::Create(long chart_id,const string name,const int window,
                                const datetime time1,const double price1,
                                const datetime time2,const double price2,
                                const ENUM_LINE_STYLE style=STYLE_SOLID,const int
                                const bool back=false,const bool selection=true,
                                const bool hidden=true,const long z_order=0)
{
    if(!ObjectCreate(chart_id,name,OBJ_TREND>window,time1,price1,time2,price2))
        return(false);
    if(!Attach(chart_id,name>window,2))
        return(false);
    //--- successful
    return(true);
}
```

It's a different approach to the same problem - "How to put a [horizontal line](#) with more width on the chart"

I appreciate your attention to the problem! What you gave me works but only to a point (and, I'll keep working on it)

I'm working on the theory that "Market Profile" gives me the prices at which "buy/sell" orders occur, and the "fat" lines represent "liquidity" levels.



WhiteEagle 2014.05.02 16:13 #7

EN

Problem Solved! Thanks!

I found that the 2nd solution to my problem (i.e., modifying "ChartObjectLines") gave lines that were not always straight (especially, in the future)

So, I returned to the solutions given me above. The first . . .

```
input string      InpName="HLine";        // Line name
input string      InpName2="HLine2";      // Line name
//
//
//
if(!HLineCreate(0,InpName,0,price[p],InpColor,InpStyle,InpWidth,InpBack,
                InpSelection,InpHidden,InpZOrder))
//
//
if(!HLineCreate(0,InpName2,0,price[p],InpColor,InpStyle,InpWidth,InpBack,
                InpSelection,InpHidden,InpZOrder))
```

. . . meant I'd have to multiply the "names" indefinitely. Thanks, GumRai, but it wasn't the final solution.

The second . . .

```
input string      InpName="HLine";        // Line name

void OnStart()
```



```
{
//--- check correctness of the input parametersth
string      InpName="HLine"+TimeToString(TimeCurrent(),TIME_DATE|TIME_MINUTE
```

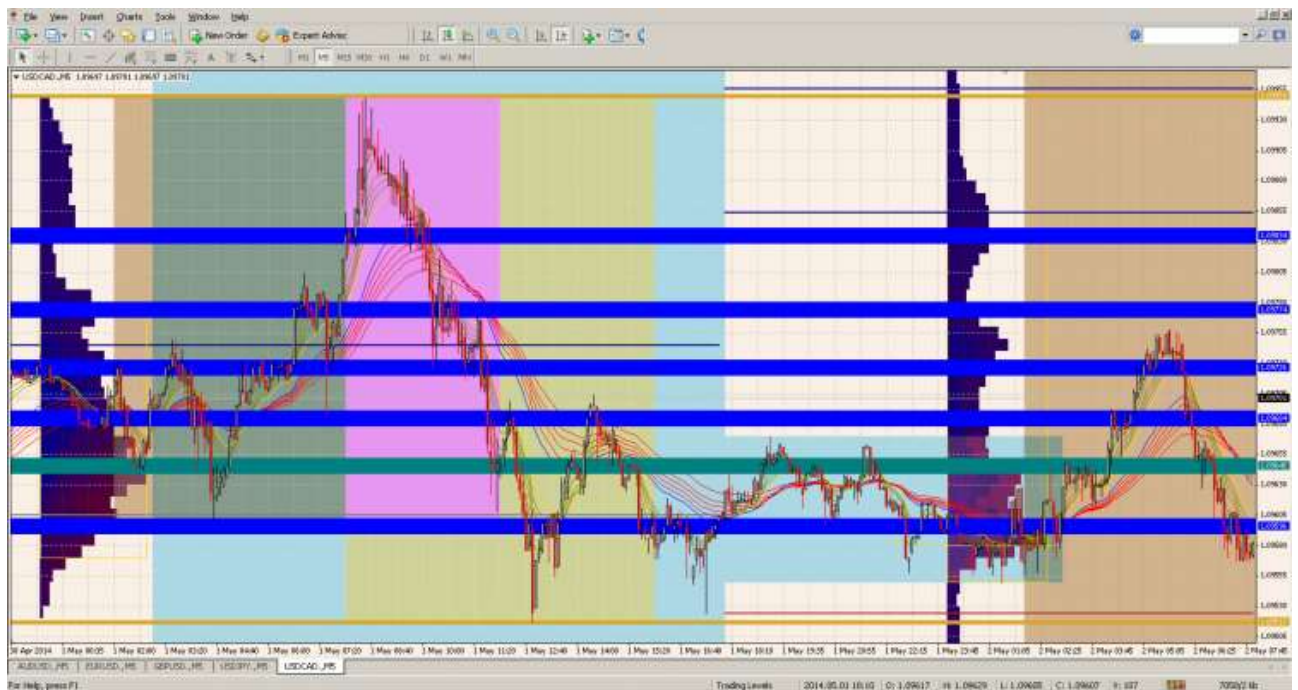
... worked when placed in the proper area. Thanks, deVries, but I found it needed an additional value ...

```
input string      InpName="HLine";      // Line name

void OnStart()
{
//--- check correctness of the input parameters
string      InpName="HLine"+TimeToString(TimeCurrent(),TIME_DATE|TIME_MINUTE
```

Once I understood what was happening, I saw that I could "add" two "HLines" when Price advanced by MINUTES, and when I added SECONDS, I could "add" indiscriminately.

Thanks, guys (and gals), for the help! I have it "how" I wanted it.



The "Goldenrod" horizontal lines represent the "Daily H/L" The "Teal" band represents "Value" in "Market Profile," and the "Blue" bands represent "Liquidity" levels.

I'm trying to follow the strategy of "prop trader" Ray DeMedici trading out of London.



3

Yogesh 2014.10.22 14:58 #8

EN

Hi whiteEagle,

Looks very impressive !!! How is indicator working for you? Can you share the full source code please?

Thanks,

Vaikay

[New comment](#)

MetaTrader 5[MetaTrader 5 Trading Platform](#)[MetaTrader 5 latest updates](#)[News, implementations and technology](#)[MetaTrader 5 User Manual](#)[MQL5 language of trading strategies](#)[MQL5 Cloud Network](#)[Download MetaTrader 5](#)[Install Platform](#)[Uninstall Platform](#)**Website**[About](#)[Timeline](#)[Terms and Conditions](#)[Privacy and Data Protection Policy](#)[Cookies Policy](#)[Contacts and requests](#)**Join us — download MetaTrader 5!**[Windows](#)[iPhone/iPad](#)[Mac OS](#)[Android](#)[Linux](#)

Not a broker, no real trading accounts

Copyright 2000-2018, MQL5 Ltd.