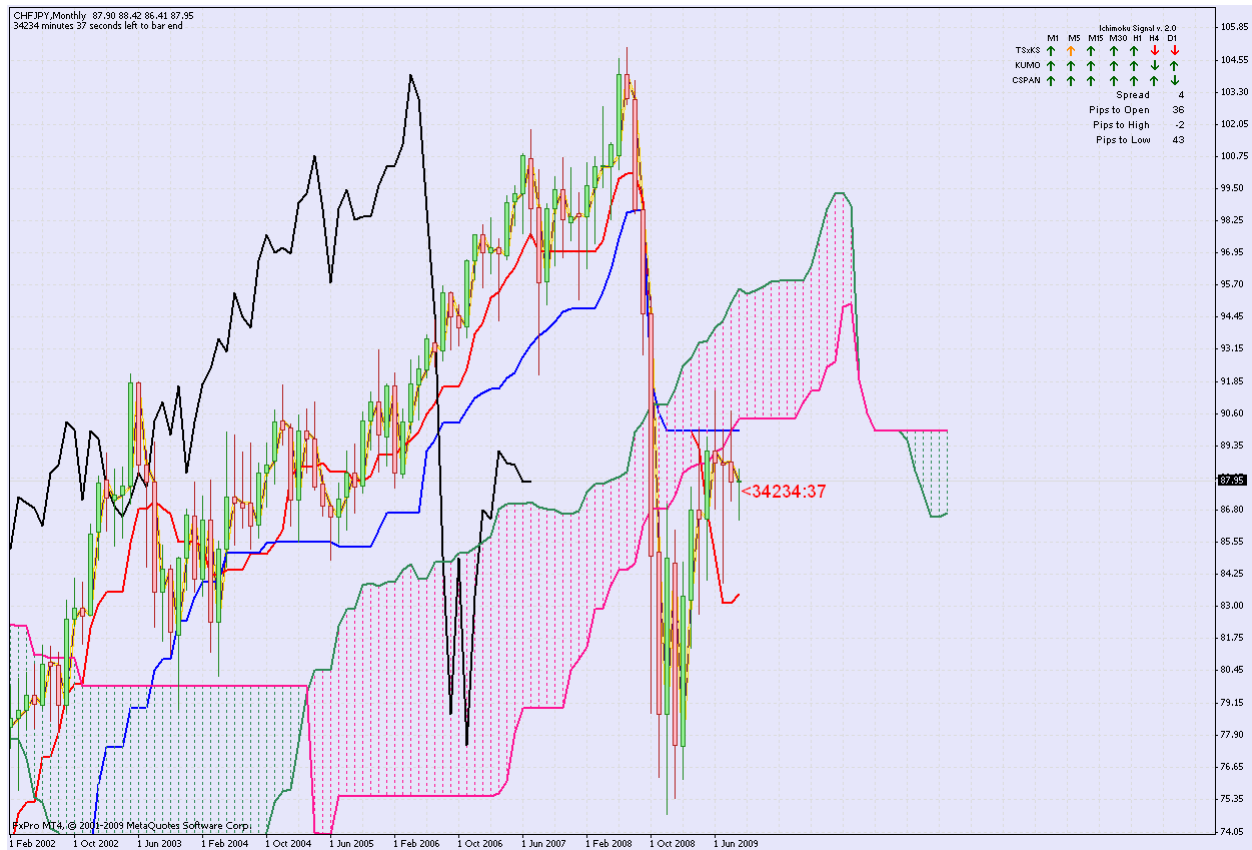


## Weekly Setup for CHF JPY



Monthly Chart

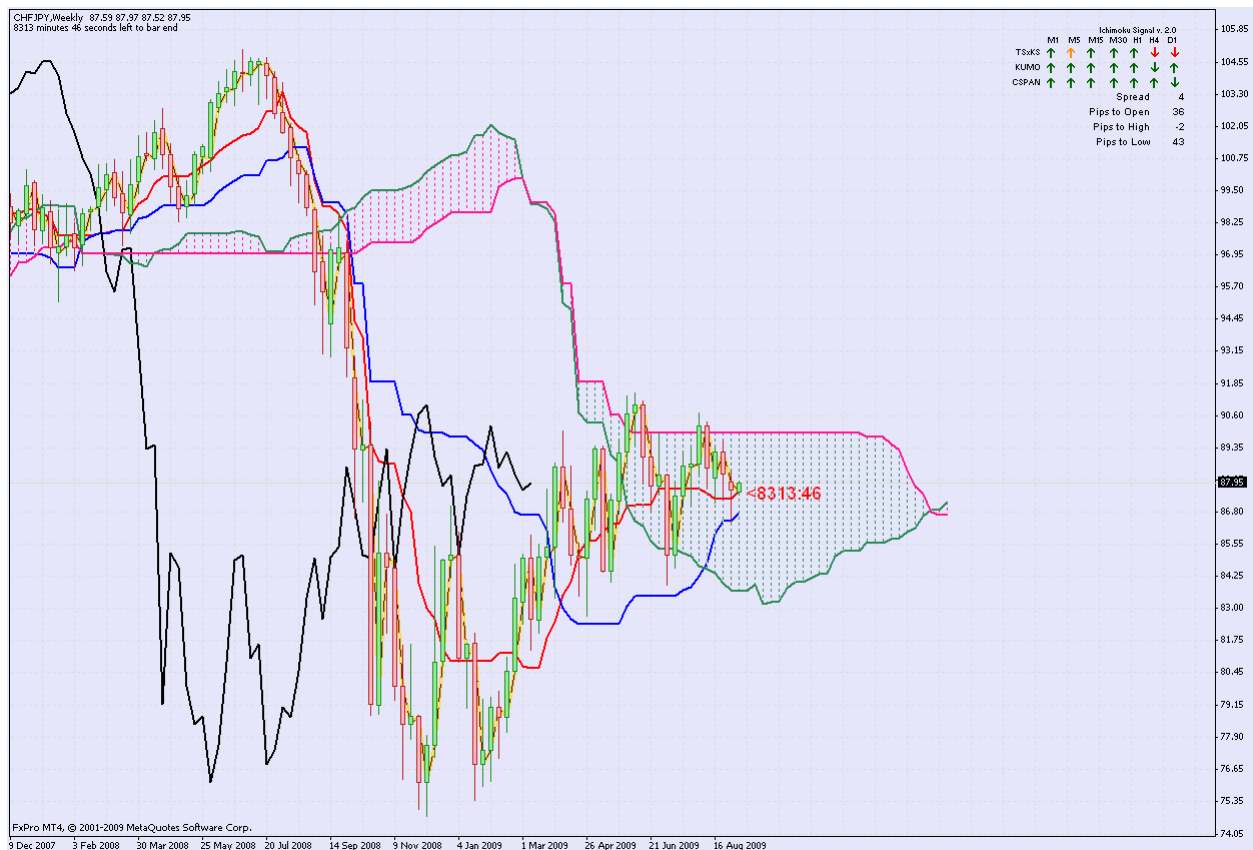
Bearish – Mixed.

Kumo Twist Down.

TS crossed down through KS.

Chinkou Span below price.

Price below Cloud – note: Current candle is a Hammer and previous candle has a high shadow and Senkou span B is pretty flat which could pull the price up.



Weekly Chart

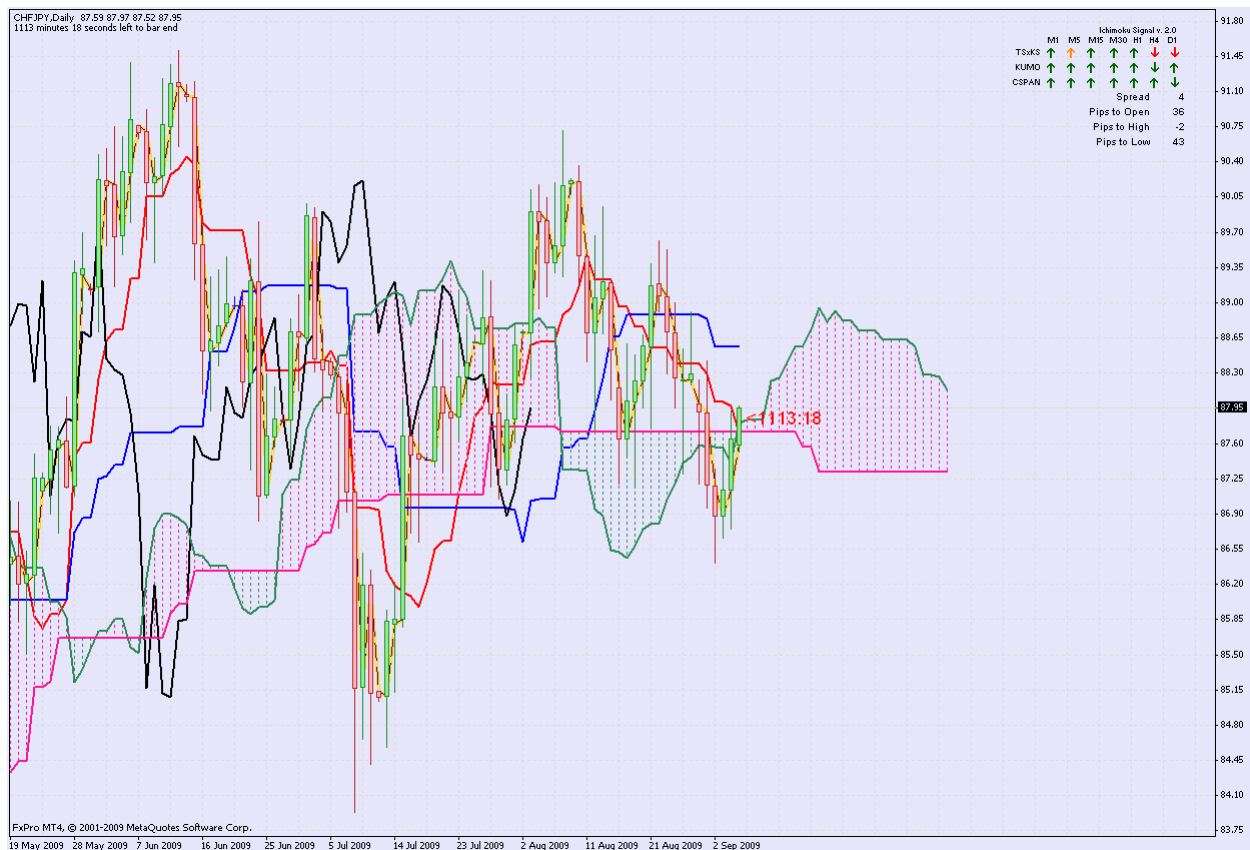
Mixed - Sideways

Chinkou above the price below the clouds

TS over KS but both in the clouds

Senko span B is pretty flat which could pull the price up.

Kumo Twist also up in support of a possible move long up to span b



Daily Chart

Sideways –

KS over TS

CS below price and in the cloud

Price crossing up through gap in clouds but and real close to 2 long flat Span B's which could pull it back.

**Conclusion: This Pair is a mess. No Direction and I wouldn't trade it.**