

Weekly Market Commentary

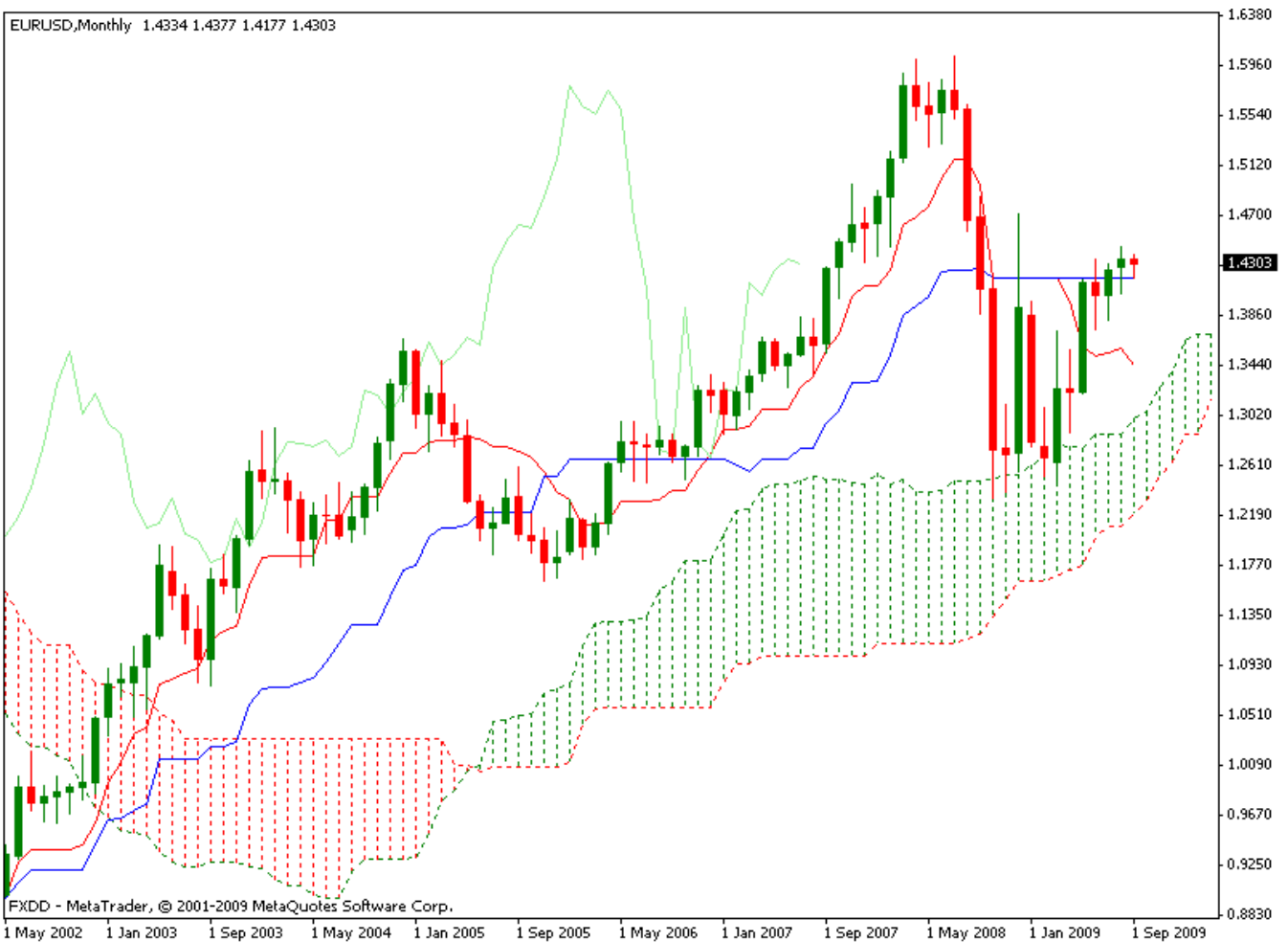
Ichimoku Kinko Hyo

Kumo Warriors

Technical Analysis

06 September 2009
EUR/USD

Monthly Candlestick Chart



Comment:Monthly range has been very tight. Kijun-sen has provided support at 1.4183.

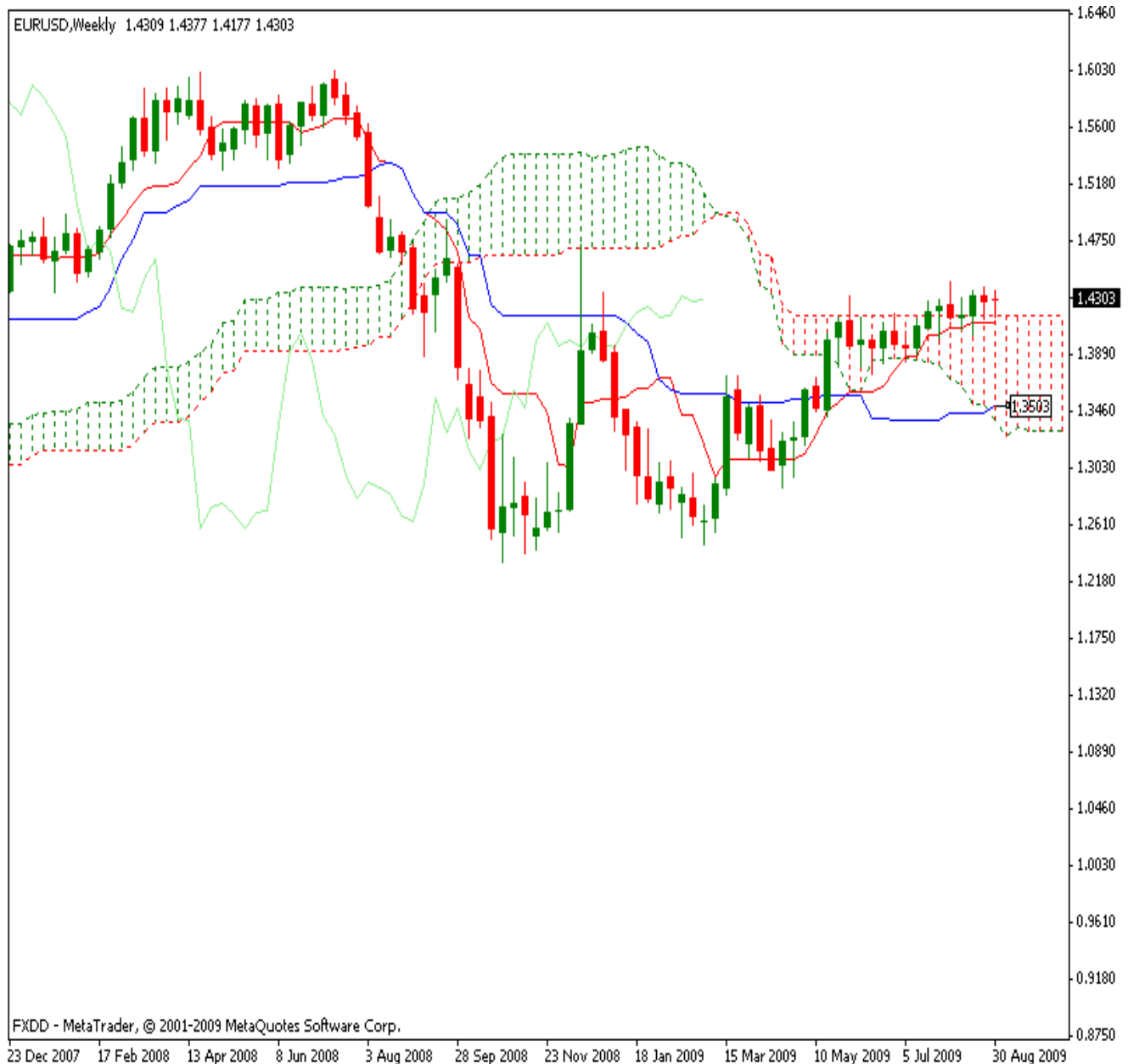
Disclaimer: all the data provided on this sheet are based upon the Ichimoku system analysis, all statements and expressions in here are personal opinions, and not meant as investment advice or solicitation.

Forex Factory: <http://www.forexfactory.com/showthread.php?t=190646>

Reports Archive: <http://www.4shared.com/dir/19807073/7e882875/sharing.html>

Email: KumoWarriors@gamil.com

Weekly Candlestick Chart



Comment: Price has found support on the Senkou span B but notice how Kijun-sen at 1.4202-3 area is within the kumo. Chinkou span is somewhat flat and undecided. Be aware of the flat top kumo (bearish) although recent price activity suggests a bullish turn possible.

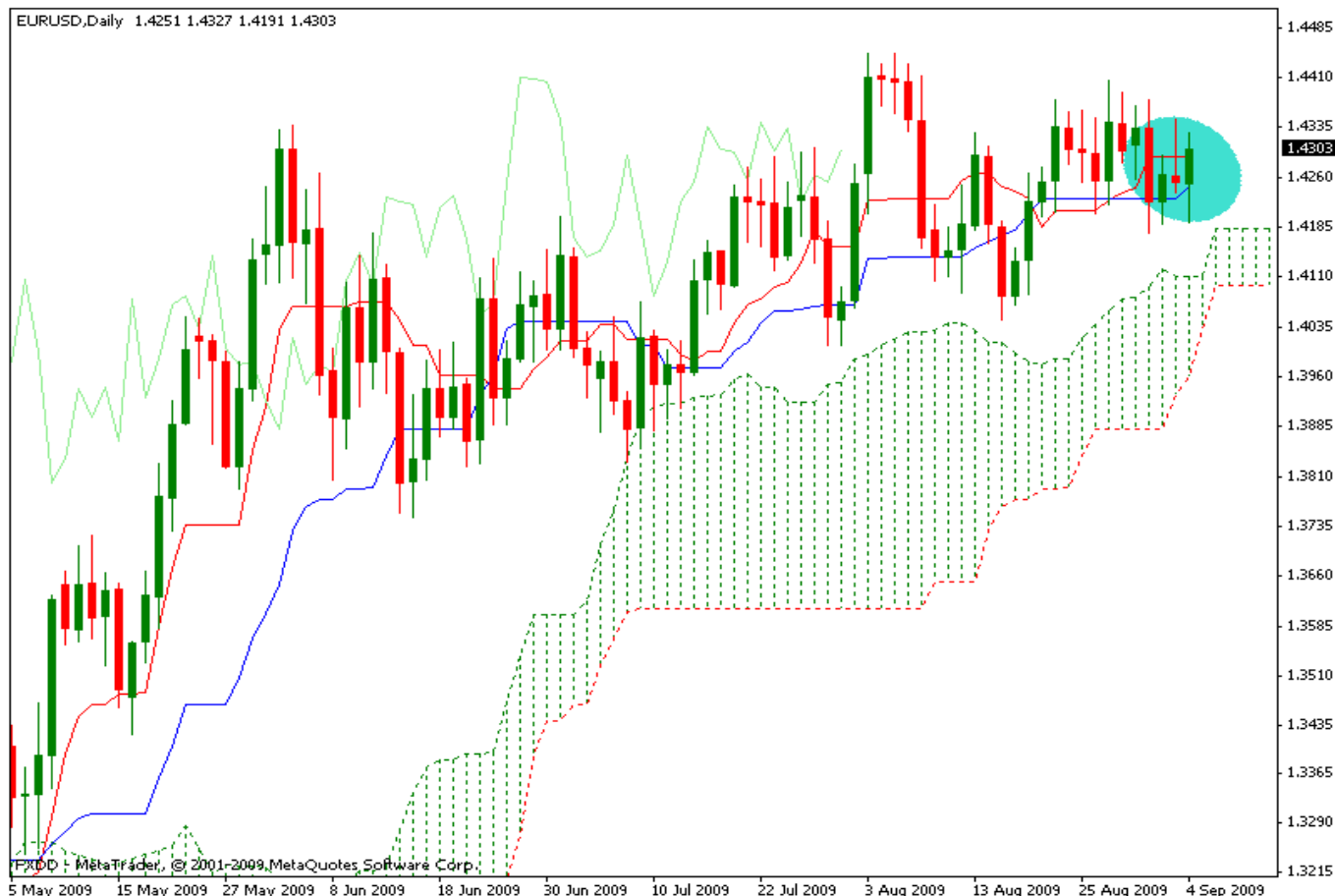
Disclaimer: all the data provided on this sheet are based upon the Ichimoku system analysis, all statements and expressions in here are personal opinions, and not meant as investment advice or solicitation.

Forex Factory: <http://www.forexfactory.com/showthread.php?t=190646>

Reports Archive: <http://www.4shared.com/dir/19807073/7e882875/sharing.html>

Email: KumoWarriors@gamil.com

Daily



Comment: Kijun-sen provided support for the daily candle at 1.4246 after price made a run down to 1.4191. Chinkou span suggests some rise in price action with bullish kumo.

Trends	
Major Trend (M)	Mixed
Median Trend (W)	Bullish
Minor Trend (D)	Bullish

Conclusion: Stand aside and allow direction to be established this week. A break below 1.4182 daily support is needed to extend the decline from 1.4407 to a possible 1.4150-00 area. If this break does not occur, possible bullish theme may preside. Price is expected to range and fluctuate as observed in previous sessions. Economic releases and the G20 meeting may have influence for the short term. Mixed signals are abound.

Disclaimer: all the data provided on this sheet are based upon the Ichimoku system analysis, all statements and expressions in here are personal opinions, and not meant as investment advice or solicitation.

Forex Factory: <http://www.forexfactory.com/showthread.php?t=190646>

Reports Archive: <http://www.4shared.com/dir/19807073/7e882875/sharing.html>

Email: KumoWarriors@gmail.com