

FILTERGRID EA MT4 INSTALLATION GUIDE

BEFORE INSTALLATION

1. Extract the '**Filter Grid EA Free.zip**'
2. After extraction, there are 2 folders

Express Installation – Easily run the installer and The FREE EA will be immediately installed

- If you don't want to use the installer, you have the option to use 'Manual Installation' method

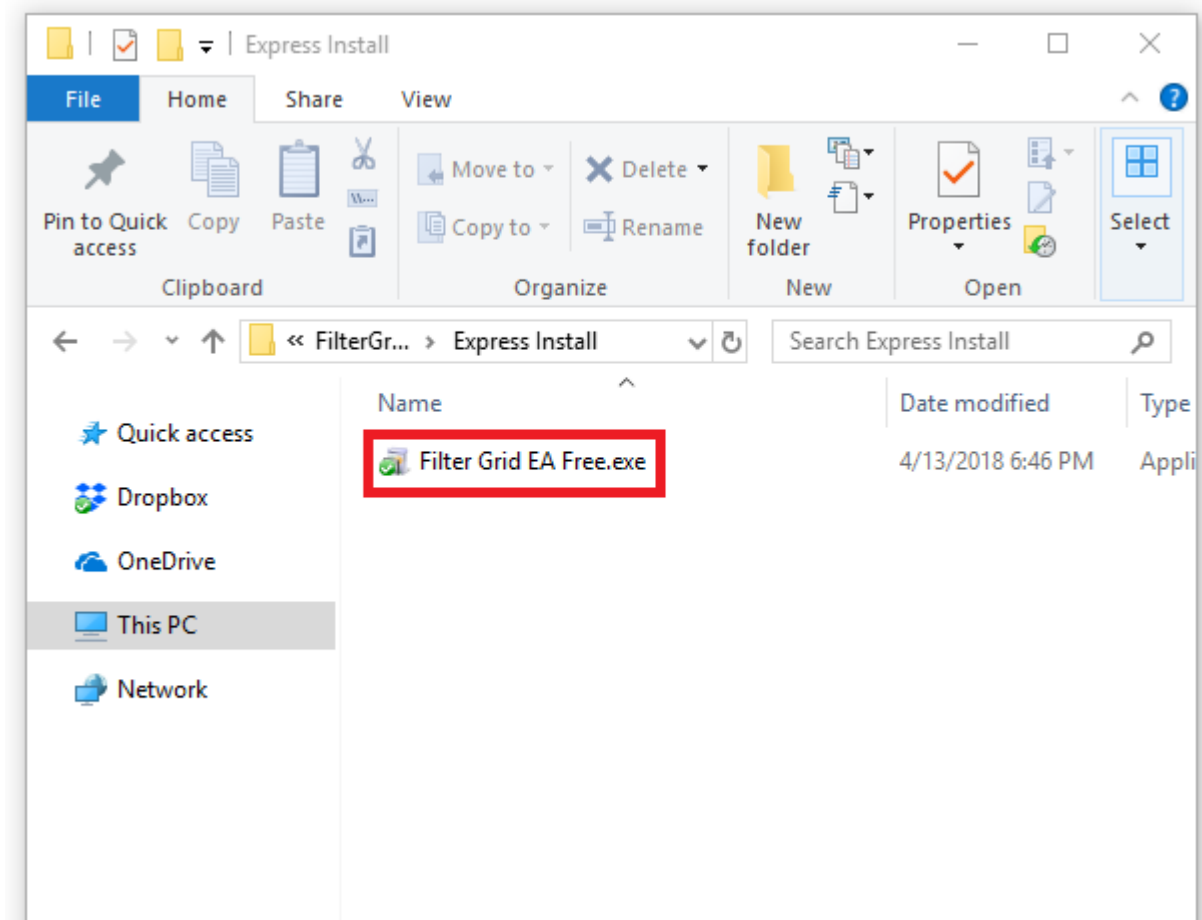
Manual Installation – Placing of files manually in its appropriate directory

- Use if easy installation is not possible on your computer
- Use if you don't want to use the installer

EXPRESS INSTALLATION

NOTE: All files needed are found inside 'Express Installation' Folder

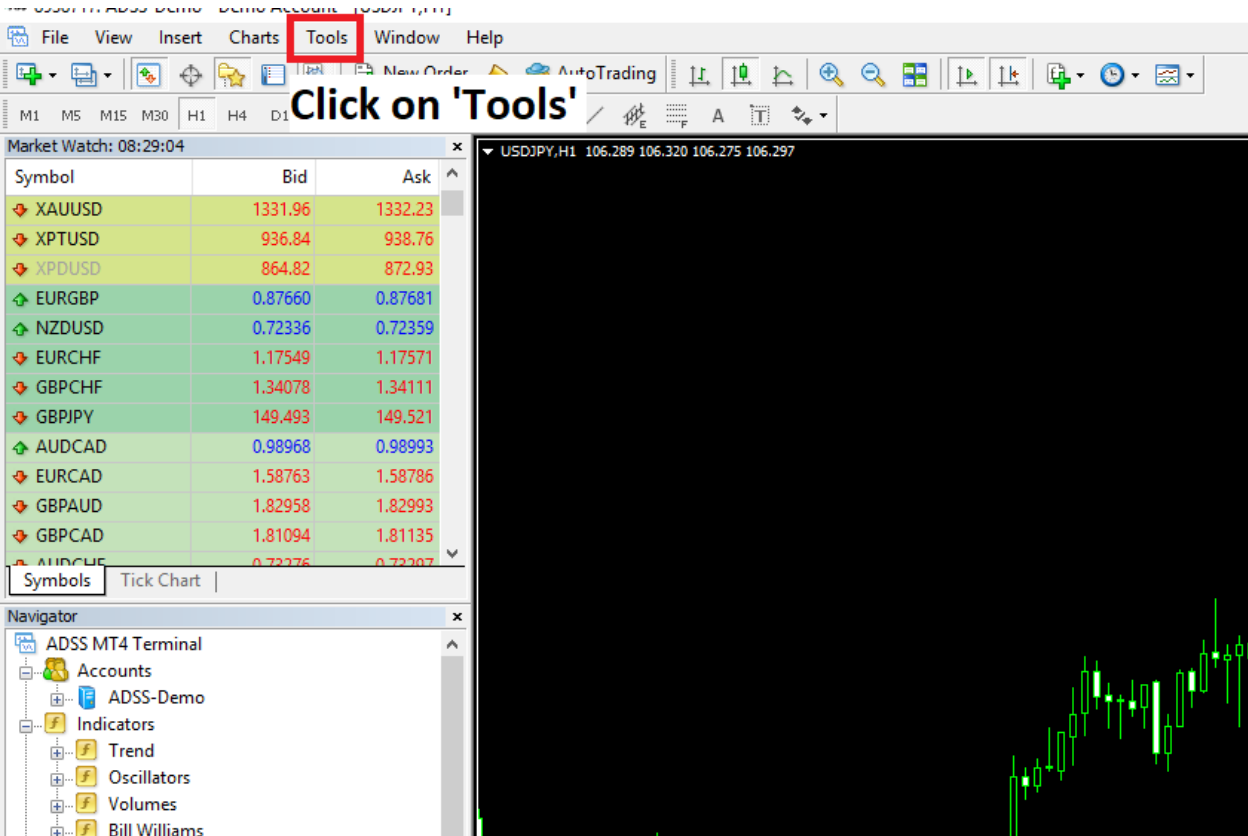
1. To begin installation, make sure that you close all opened MT4 PLATFORMS on your computer.
2. Open '**Filter Grid EA Free.exe**' file then follow steps until the installation is complete.
 - CLICK LINK TO LAUNCH IMAGE: <https://imgur.com/XJOsGk0>



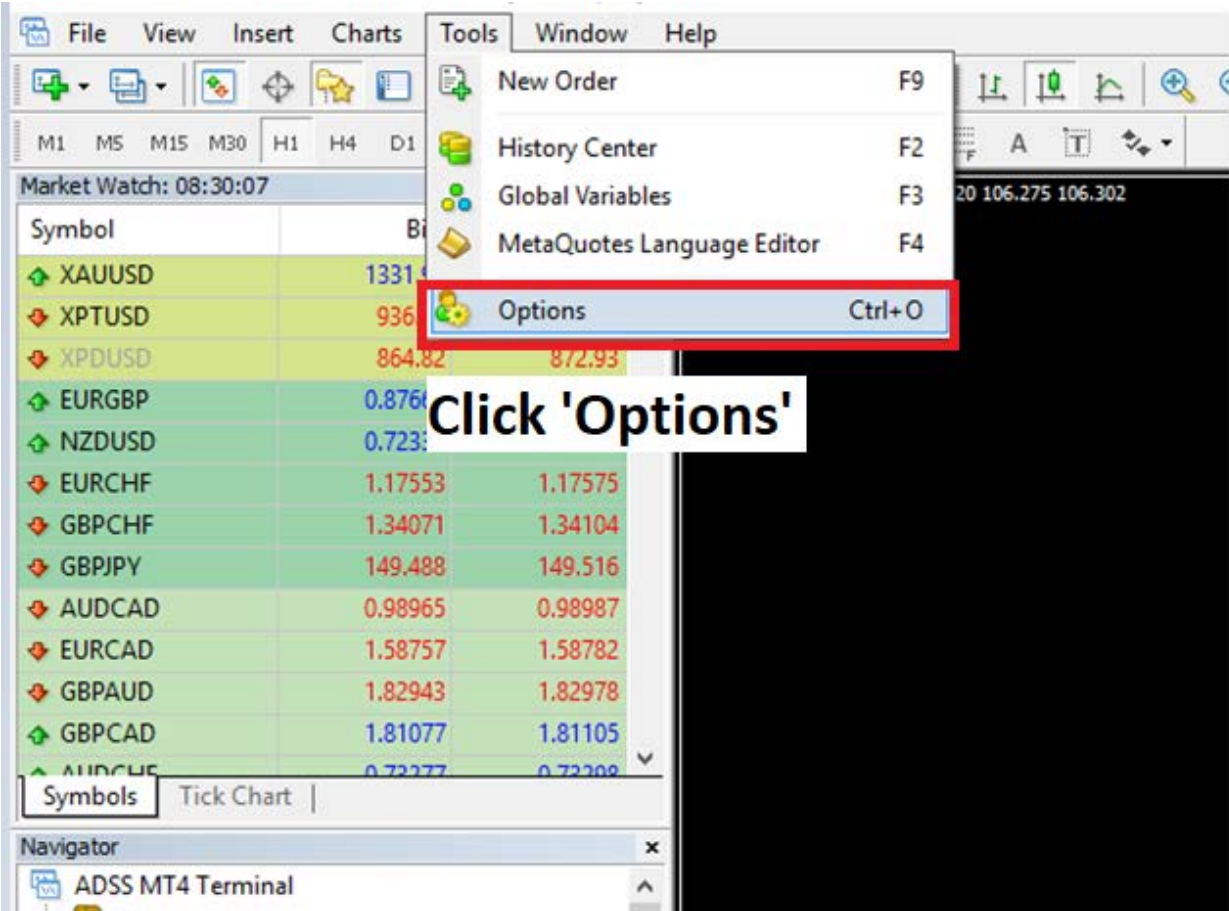
3. Run the MT4 Platform where you have installed it

4. Allow DLL Imports

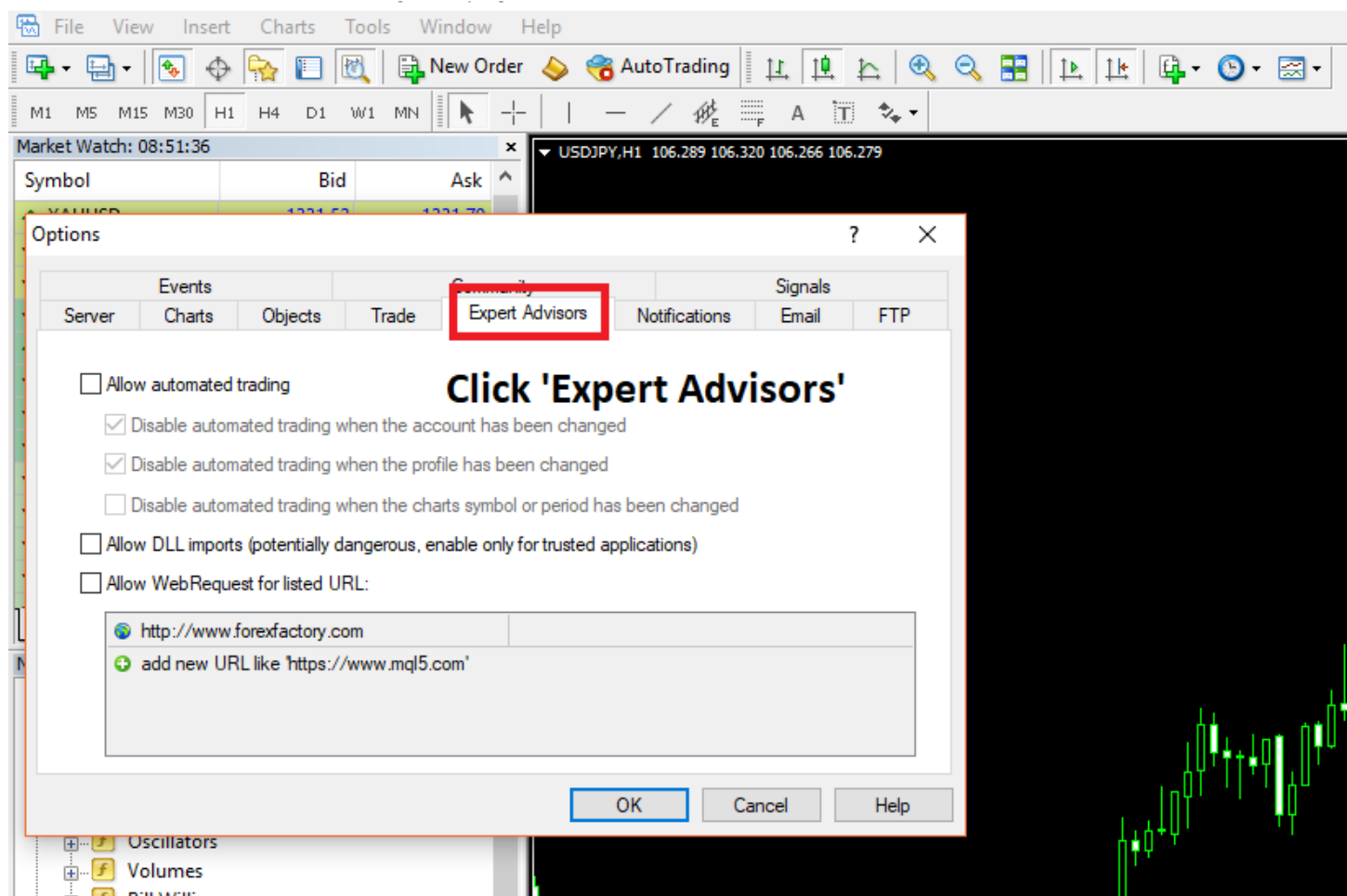
- Click on 'Tools', CLICK LINK TO LAUNCH IMAGE: <https://imgur.com/qnm8pPM>



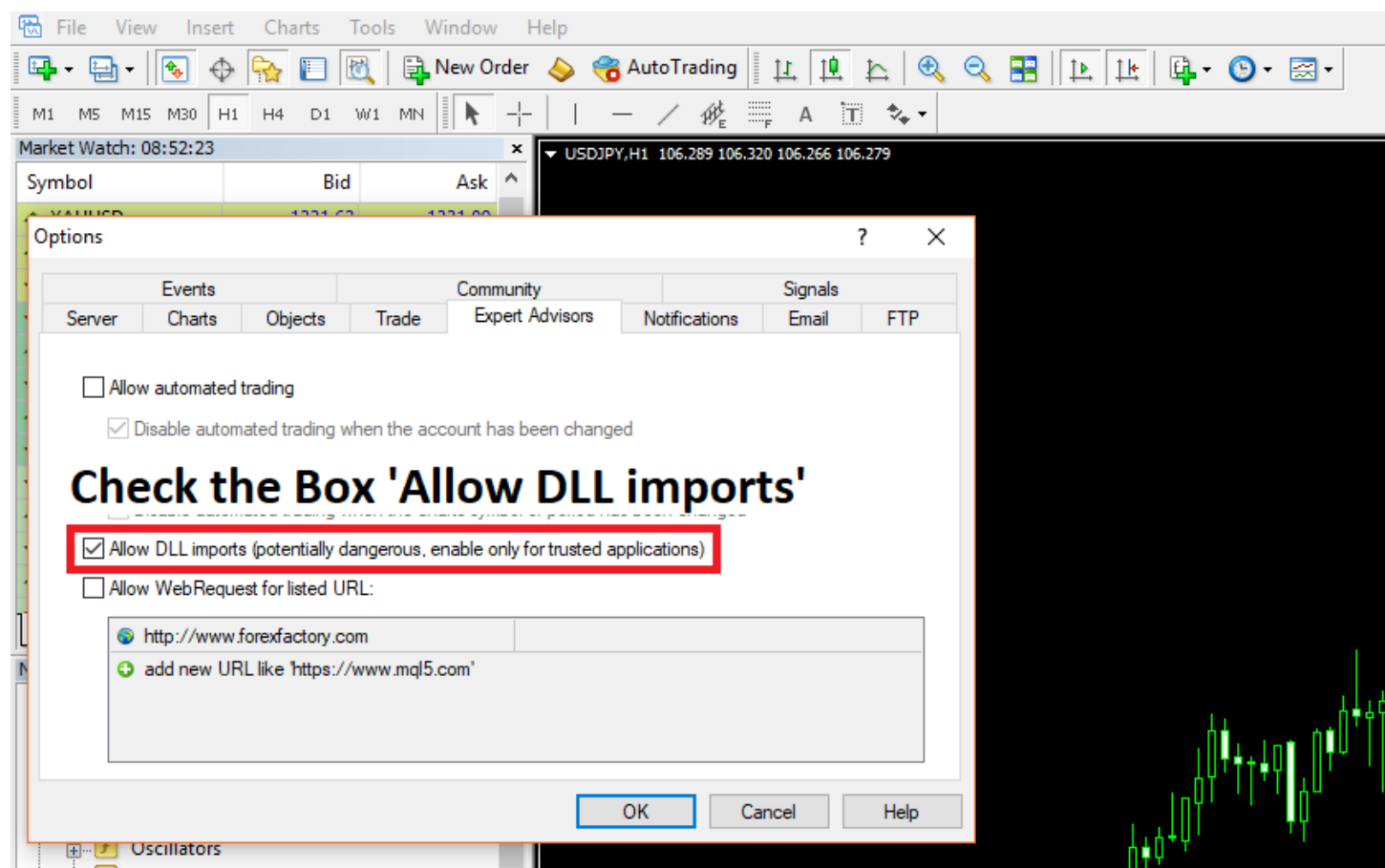
- Click 'Options', CLICK LINK TO LAUNCH IMAGE: <https://imgur.com/9X0zuVm>



- Click on the Expert Advisors Tab, CLICK LINK TO LAUNCH IMAGE: <https://imgur.com/FUIWHcr>

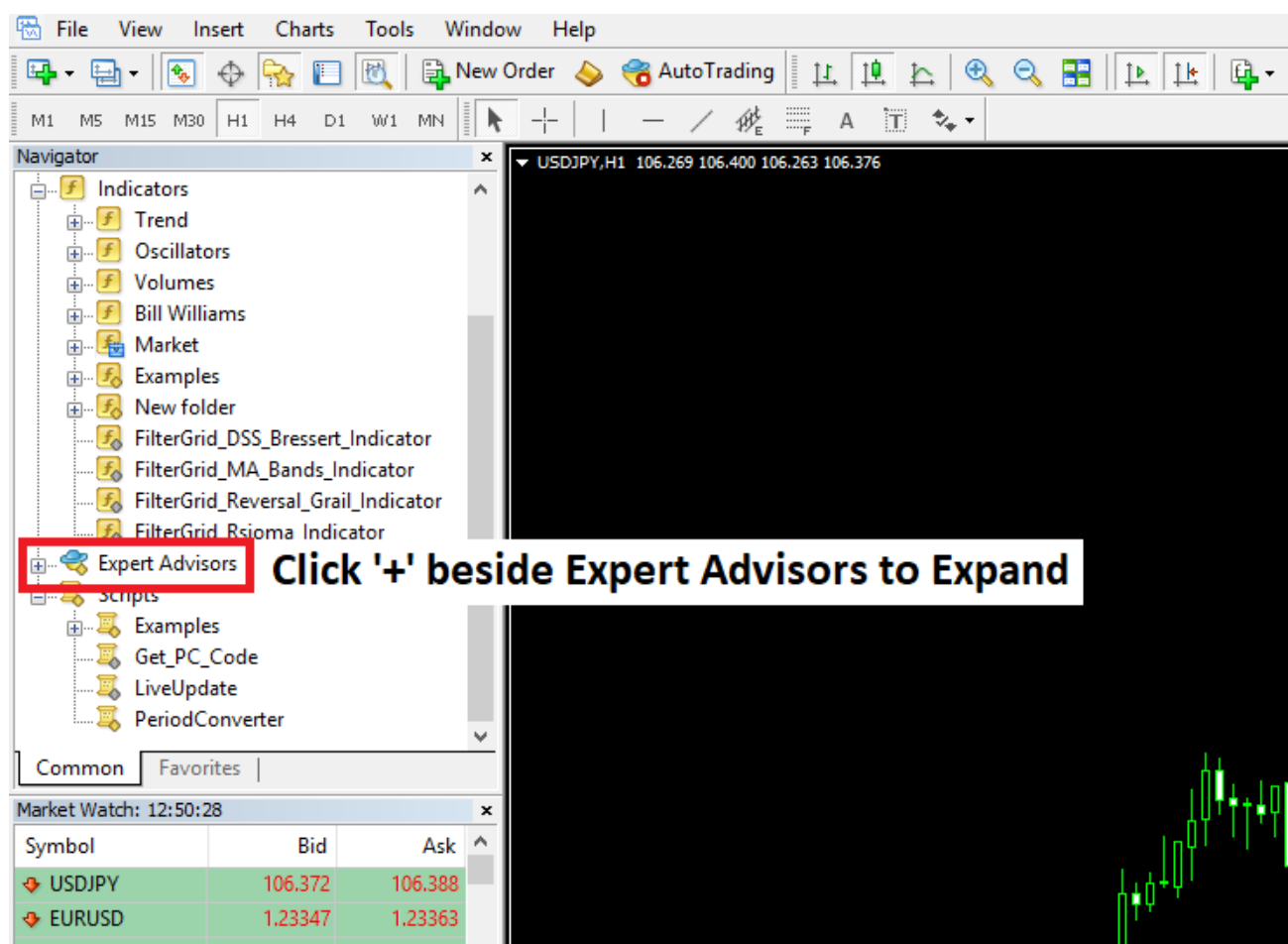


- Check the box 'Allow DLL Imports' then Click 'OK' to Confirm, CLICK LINK TO LAUNCH IMAGE: <https://imgur.com/kEw9hbz>

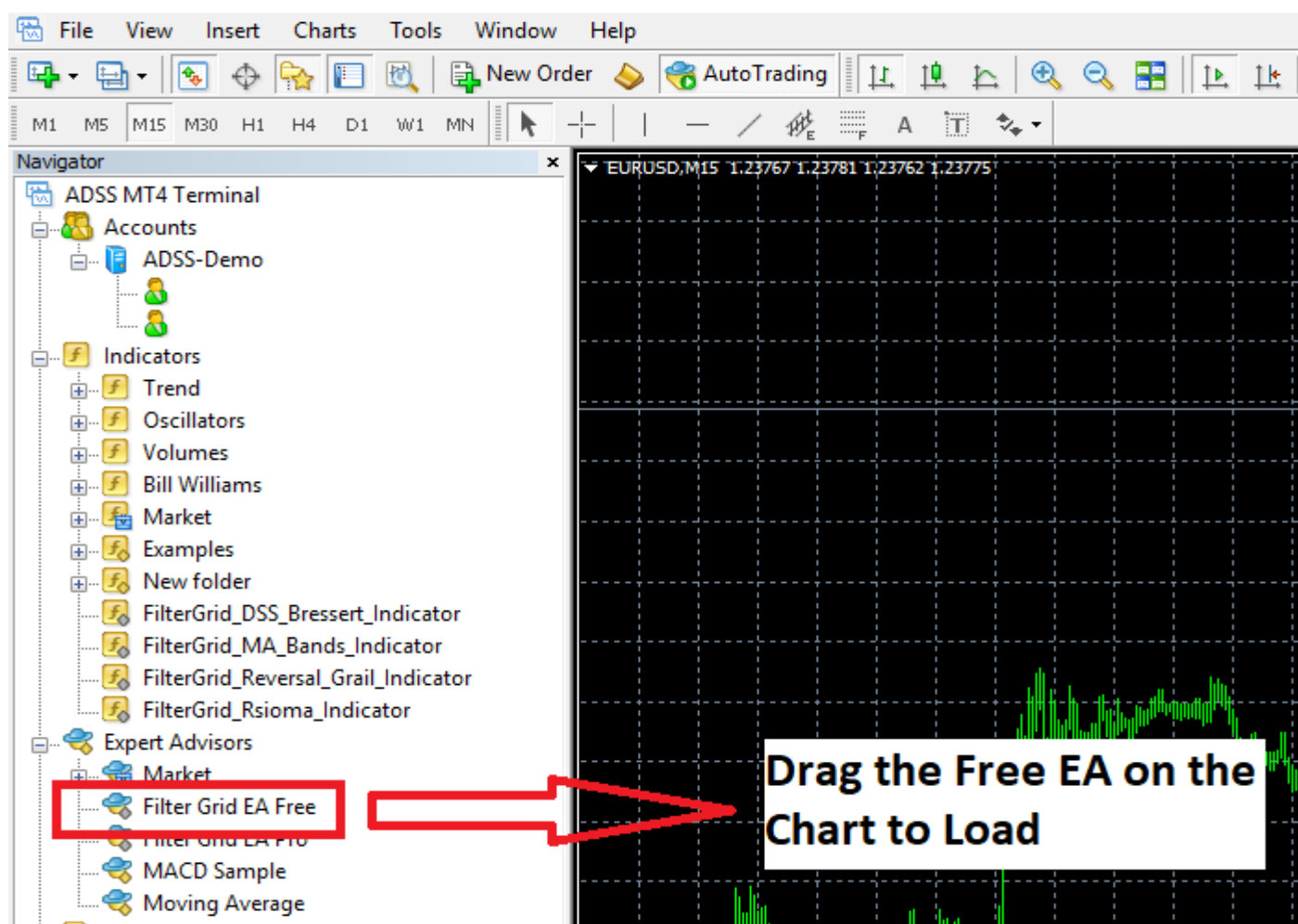


5. Attach 'Filter Grid EA Free' on the chart. You can find it on 'Expert Advisors' section on your Navigator tab.

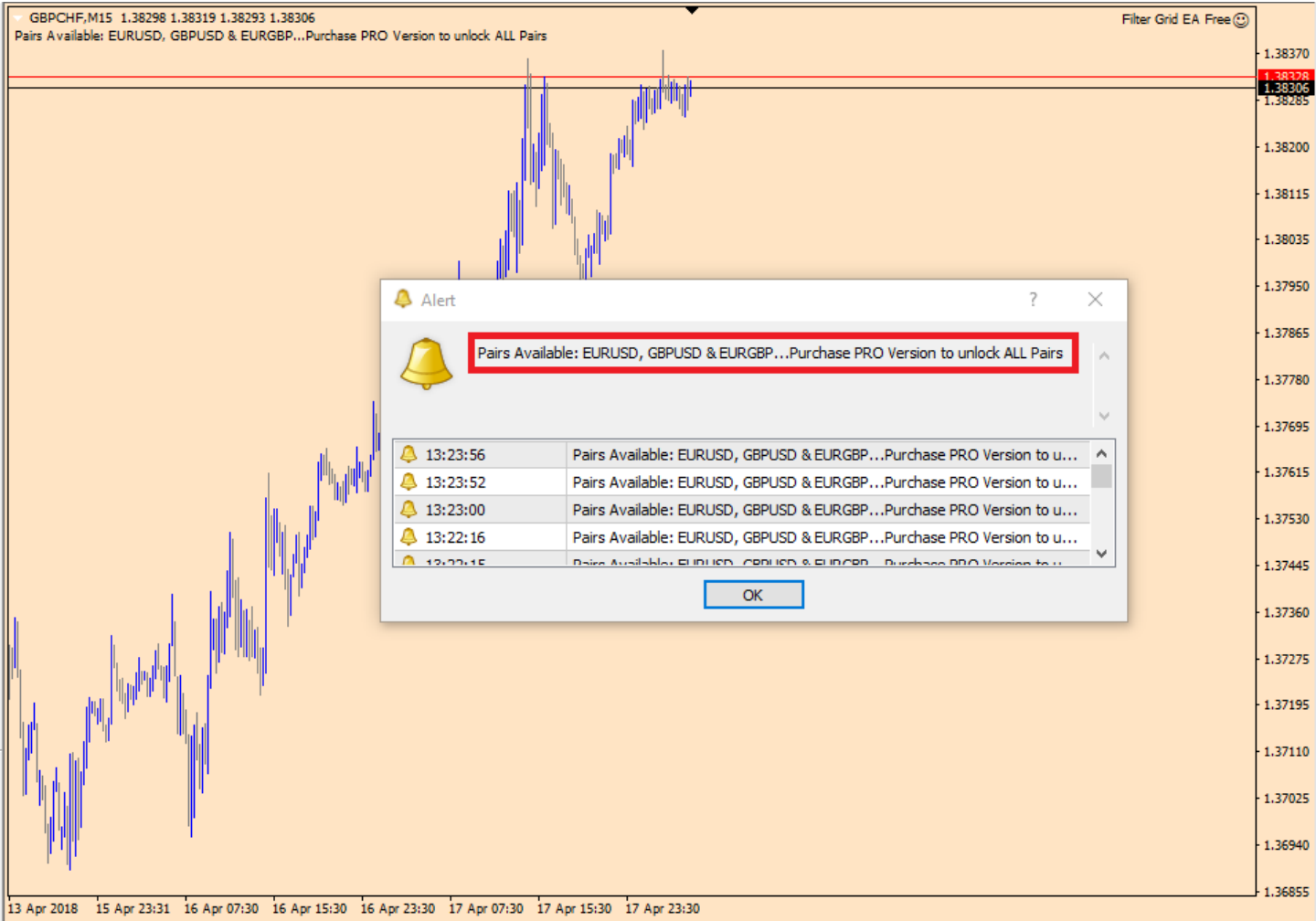
- Click "+" Symbol beside Expert Advisors, CLICK LINK TO LAUNCH IMAGE: <https://imgur.com/zAeRWsi>



- Attach the EA on the chart to Load, CLICK LINK TO LAUNCH IMAGE: <https://imgur.com/RLB6aMx>



6. The Free version of Filter Grid only works on EURUSD, GBPUSD, and EURGBP pairs. If you have loaded it in a pair the FREE EA does not support, E.g. GBPCHF it will show a pop up message showing the pairs where it should be loaded. If you want your EA to work in **ALL** pairs you should purchase the **FILTER GRID PRO**. **CLICK LINK TO LAUNCH IMAGE:** <https://imgur.com/AWsnihx>



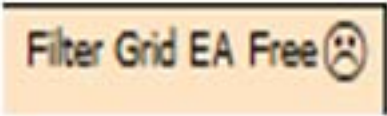
7. Ensure that the EA will trade in Your Charts. For your reference, the Filter Grid Pro EA Free Icon on the upper right corner of your chart should be in **SMILING FACE**. **CLICK LINK TO LAUNCH IMAGE:** <https://imgur.com/2pAJzko>

Icon in 'Smiling Face'



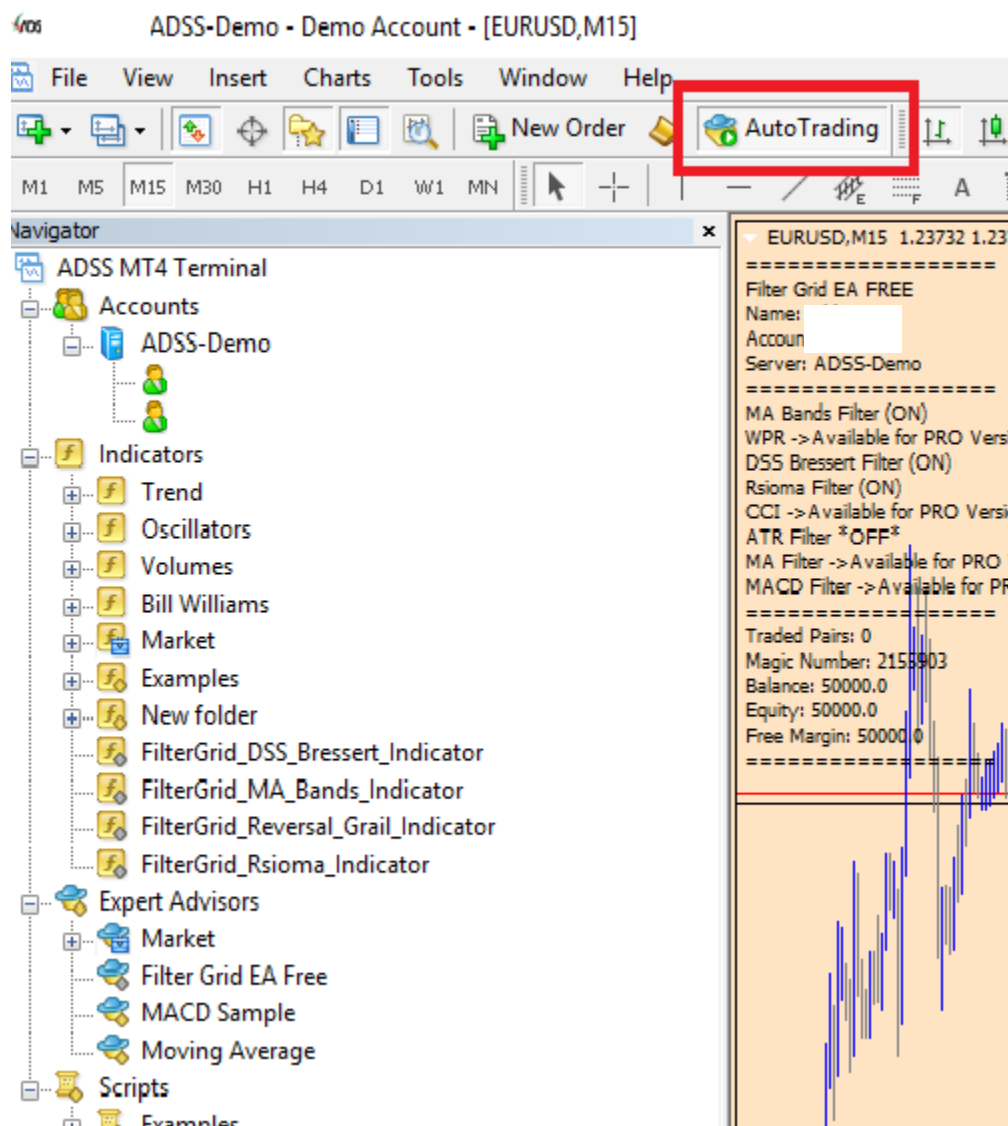
The Free EA will Trade

Icon in 'Sad Face'

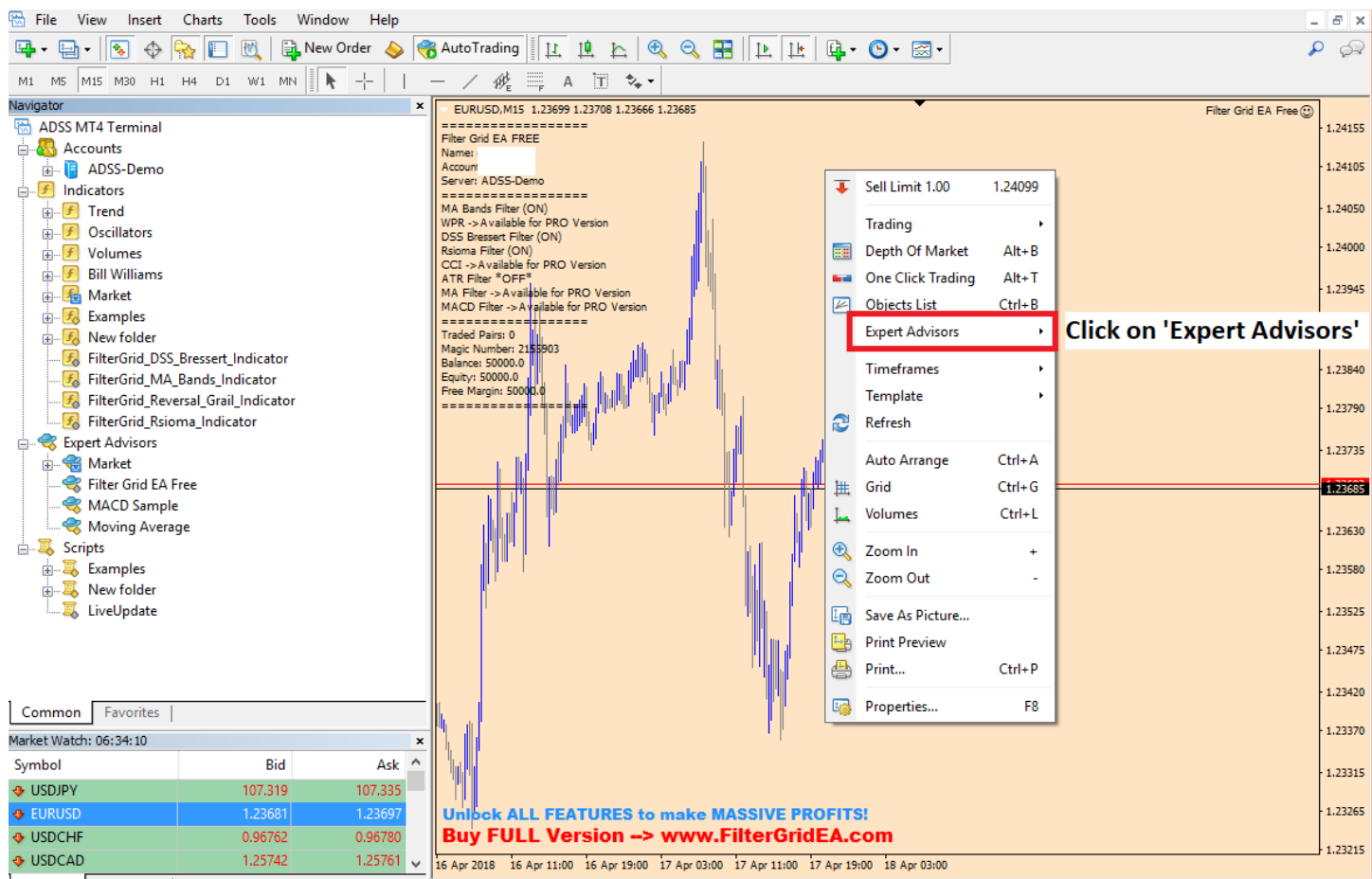


The EA will not Trade

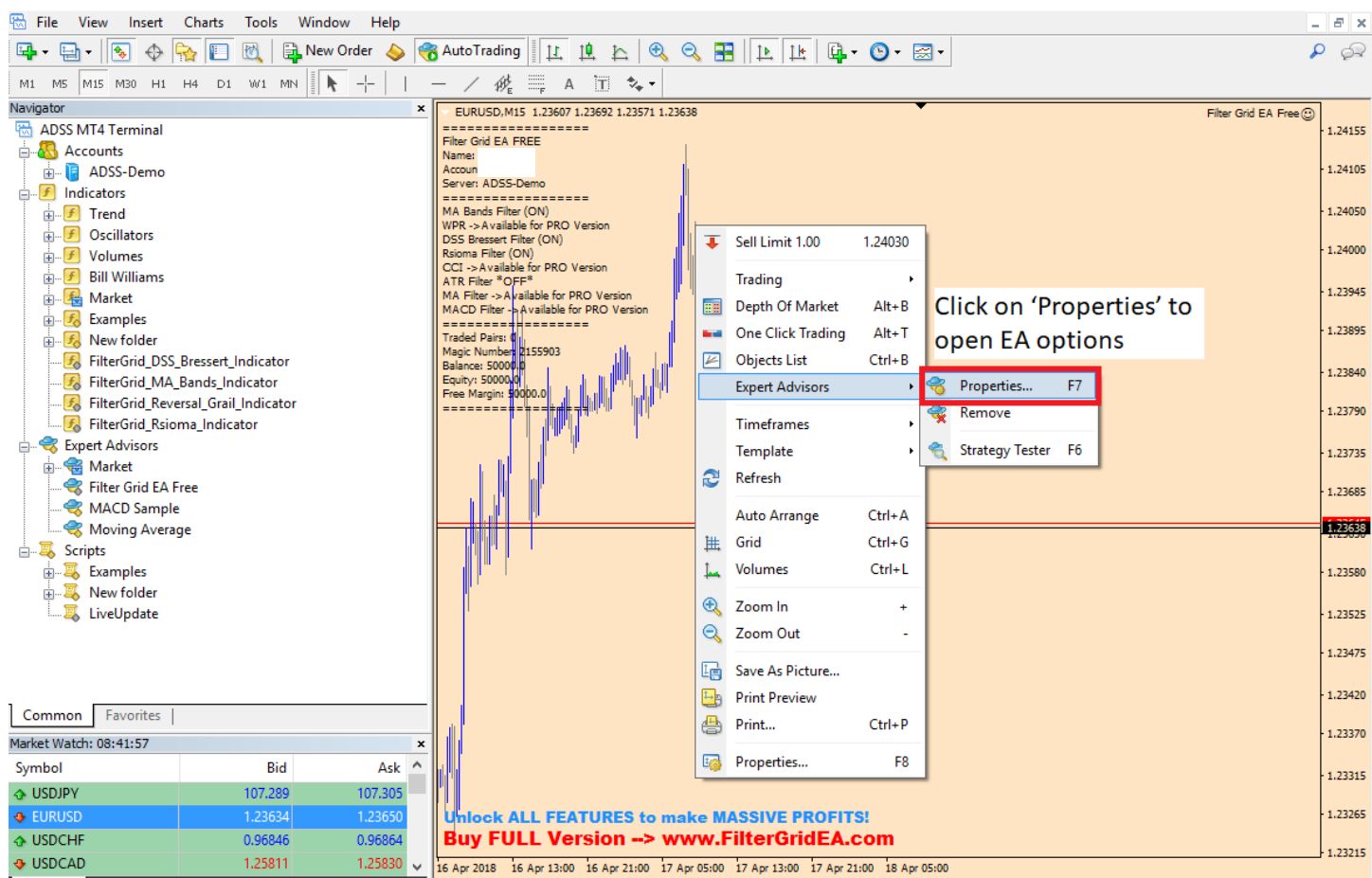
10. Always Turn On the 'Auto Trading' Button on your MT4 Platform , CLICK LINK TO LAUNCH IMAGE: <https://imgur.com/9qMN6Oi>



11. Check your Expert Advisors Settings , Right Click on your Chart, Click on 'Expert Advisors' , CLICK LINK TO LAUNCH IMAGE: <https://imgur.com/oGmksG2>

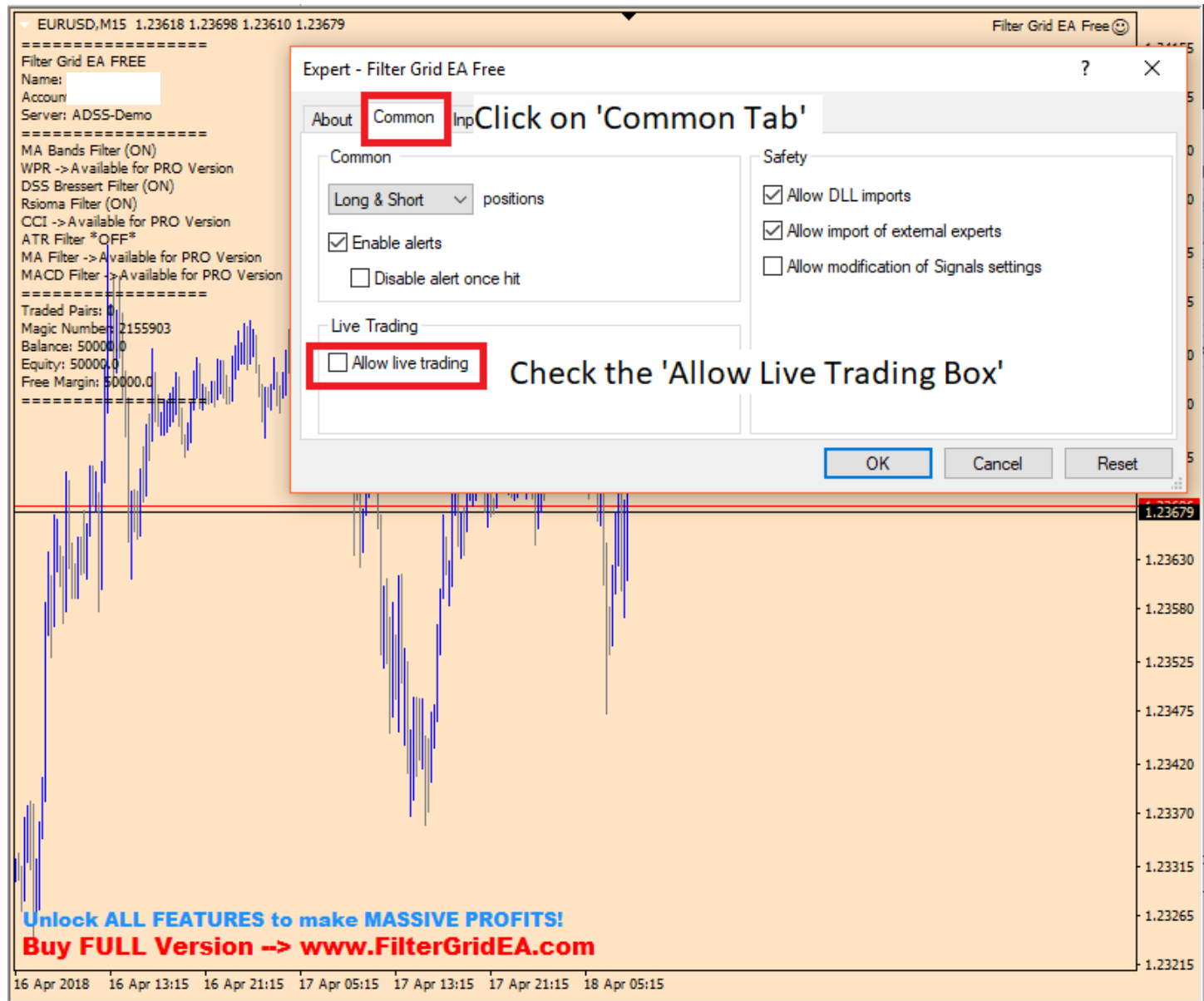


- Click on 'Properties' to open EA options, CLICK LINK TO LAUNCH IMAGE: <https://imgur.com/GZ89Lbg>

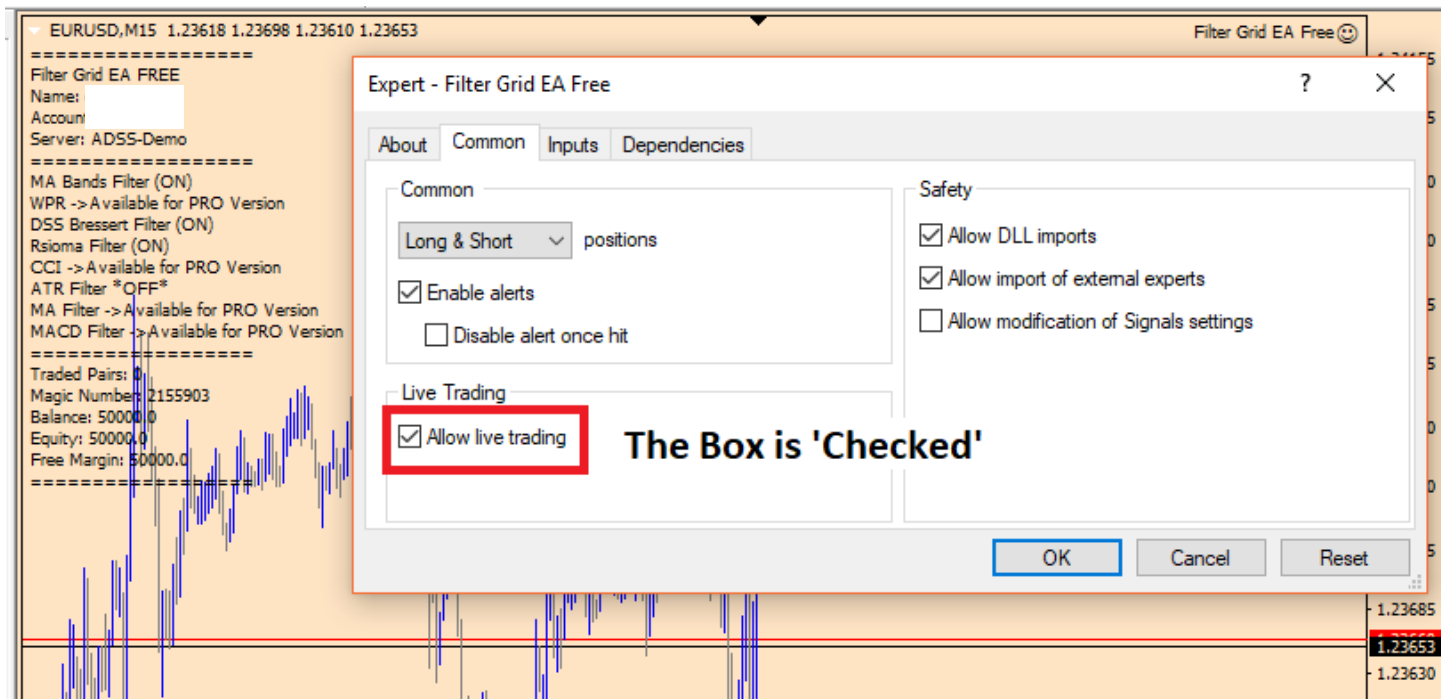


- Go to 'Common Tab', Check the 'Allow live trading' box, CLICK LINK TO LAUNCH IMAGE:

<https://imgur.com/kEw9hbz>



‘Allow live trading’ is checked then click ‘OK’ to Confirm and apply changes, CLICK LINK TO LAUNCH IMAGE: <https://imgur.com/Yckdh2C>



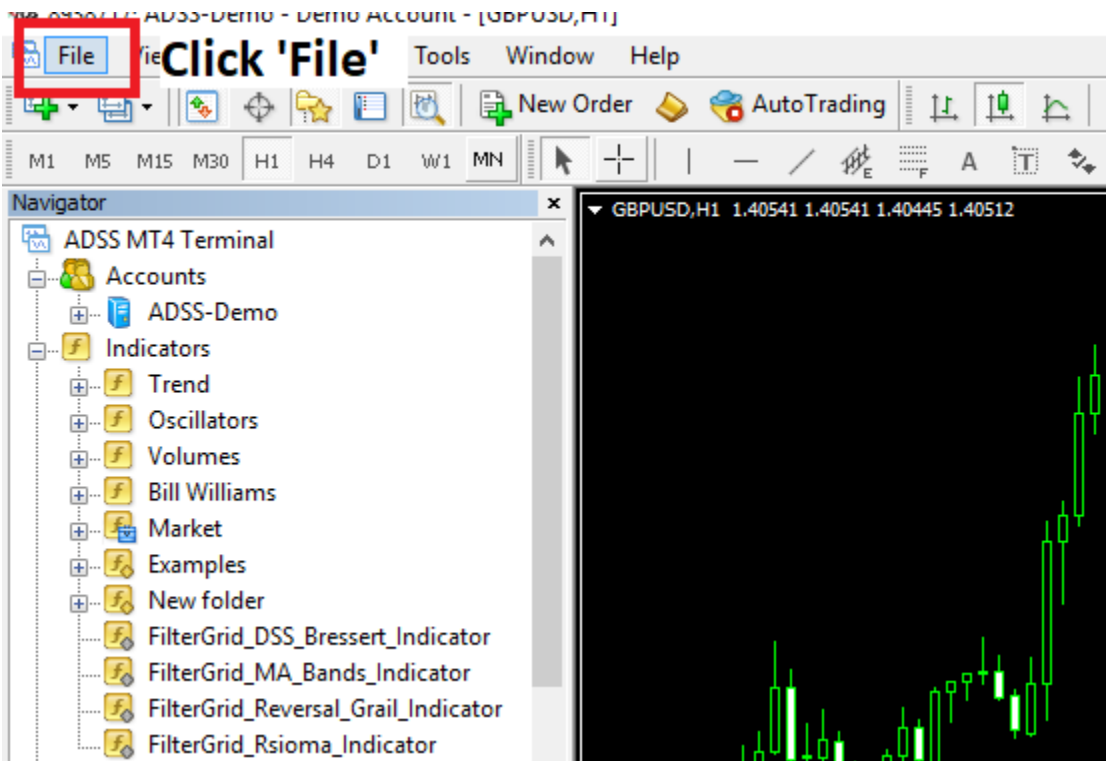
12. When the EA is correctly loaded and has accessed our servers, it should look like the image below with Smiling Face ‘Filter Grid Pro Icon’ found in the upper right corner of your chart. Note that live internet connection is required to load EA properly. Restart your MT4 if there is no connection after using the installer. CLICK LINK TO LAUNCH IMAGE: <https://imgur.com/plzMB6c>



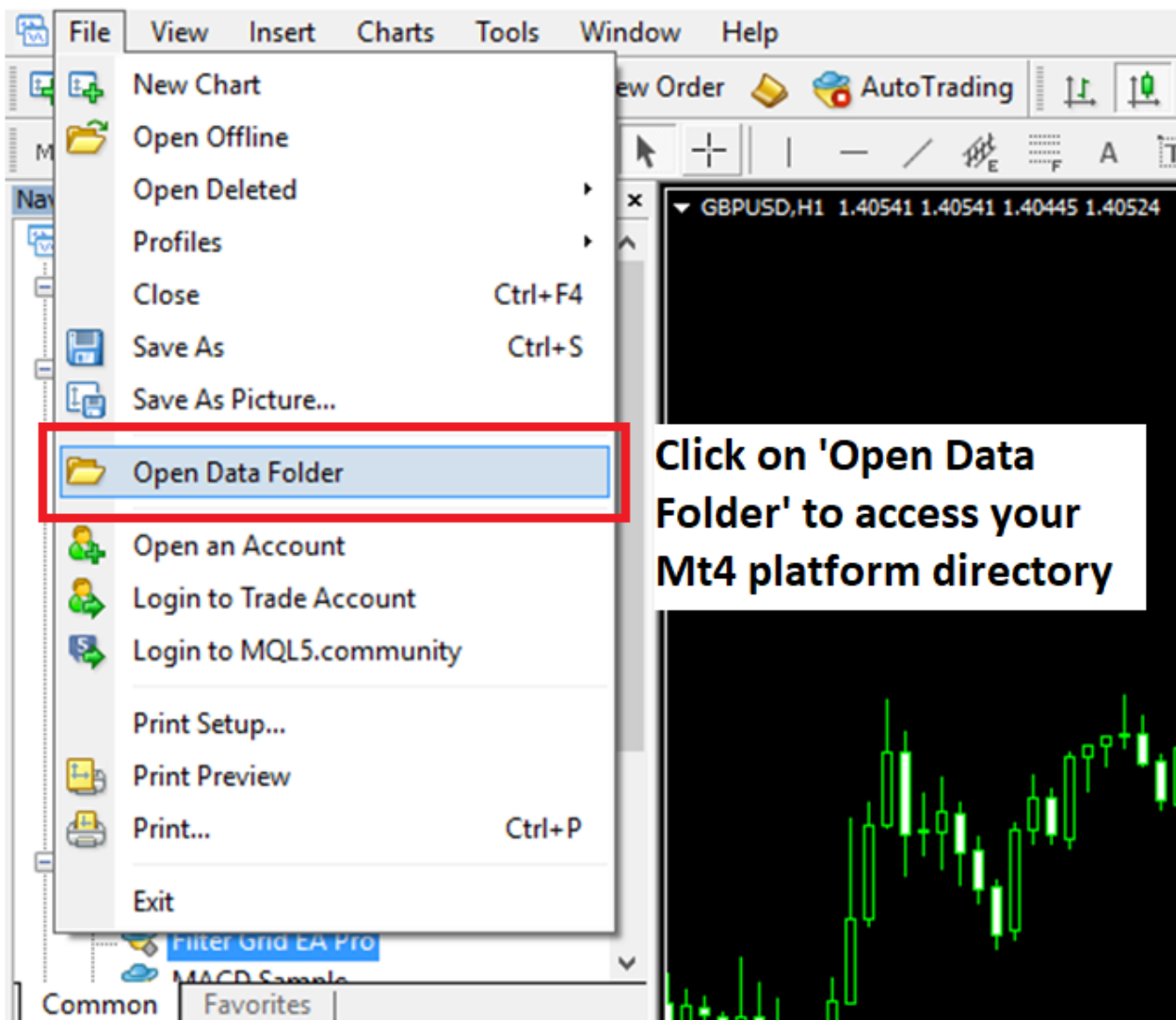
MANUAL INSTALLATION

NOTE: All files are found inside 'Manual Installation' Folder

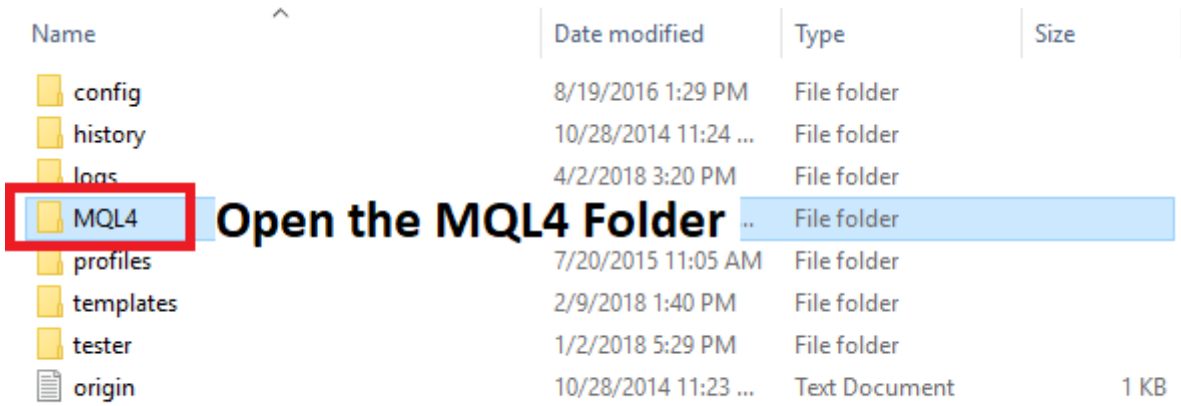
1. Open MT4
2. Open MQL4 Folder to access your MT4 platform directory
 - On your platform, Click on 'File', CLICK LINK TO LAUNCH IMAGE: <https://imgur.com/3ntvXfm>



- Click 'Open Data Folder', CLICK LINK TO LAUNCH IMAGE: <https://imgur.com/ynwrfKX>

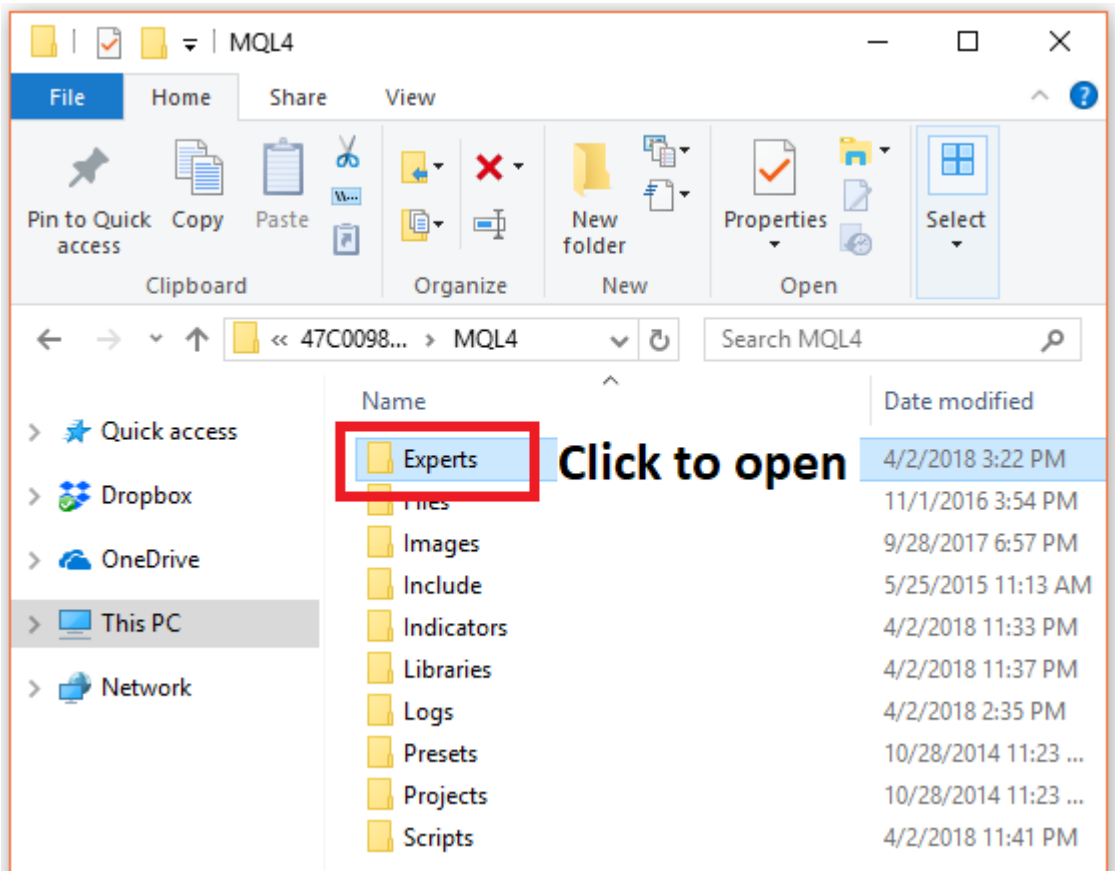


- Open MQL4 Folder, CLICK LINK TO LAUNCH IMAGE: <https://imgur.com/yO41BjH>



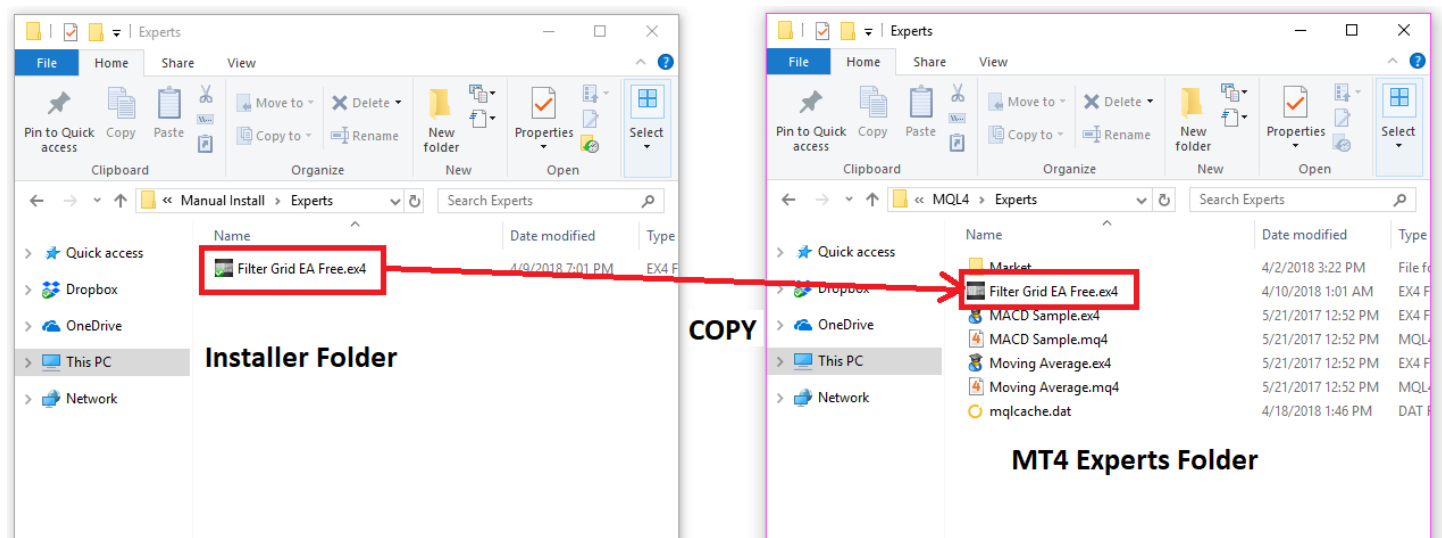
3. Open Experts folder

- CLICK LINK TO LAUNCH IMAGE: <https://imgur.com/s78oWZF>



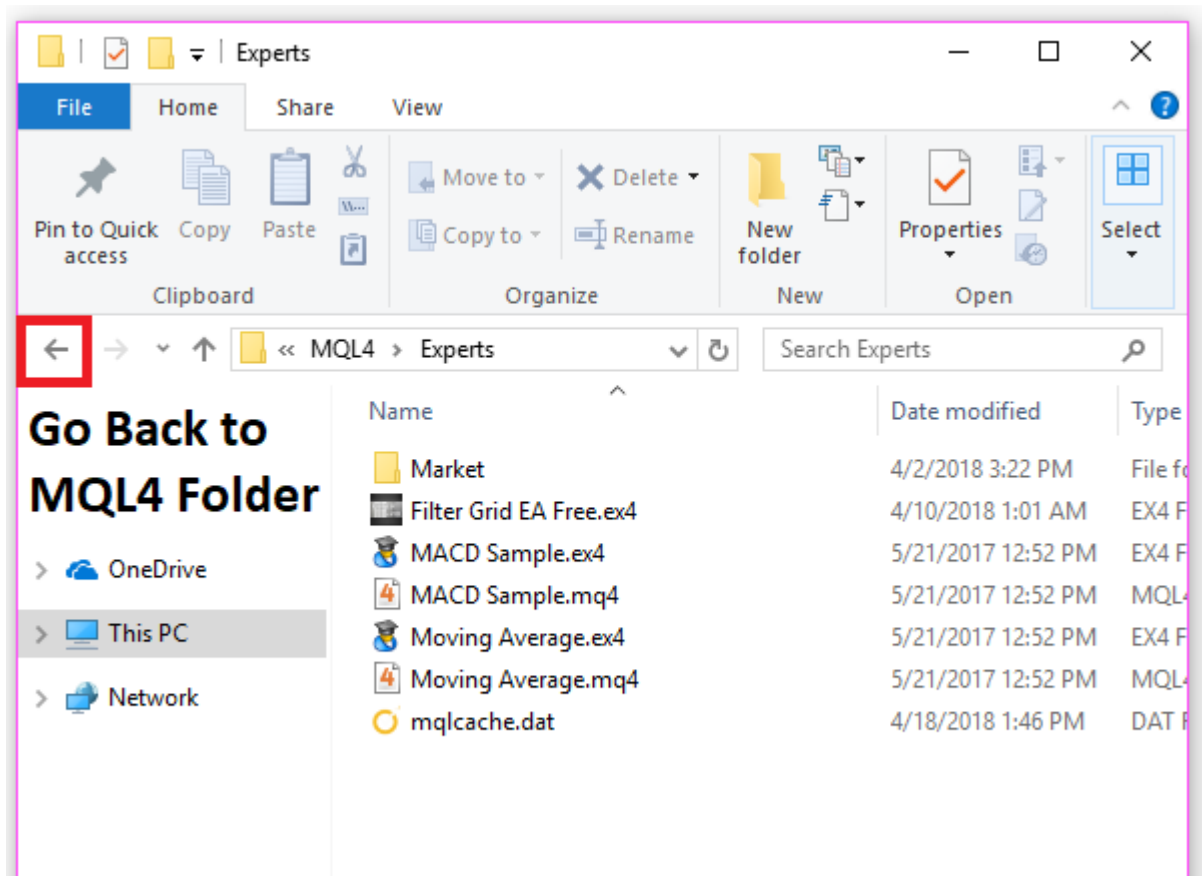
4. Copy “Filter Grid EA Free.ex4” from Installer’s Experts Folder to MT4 Experts Folder

- CLICK LINK TO LAUNCH IMAGE: <https://imgur.com/L9mkROV>



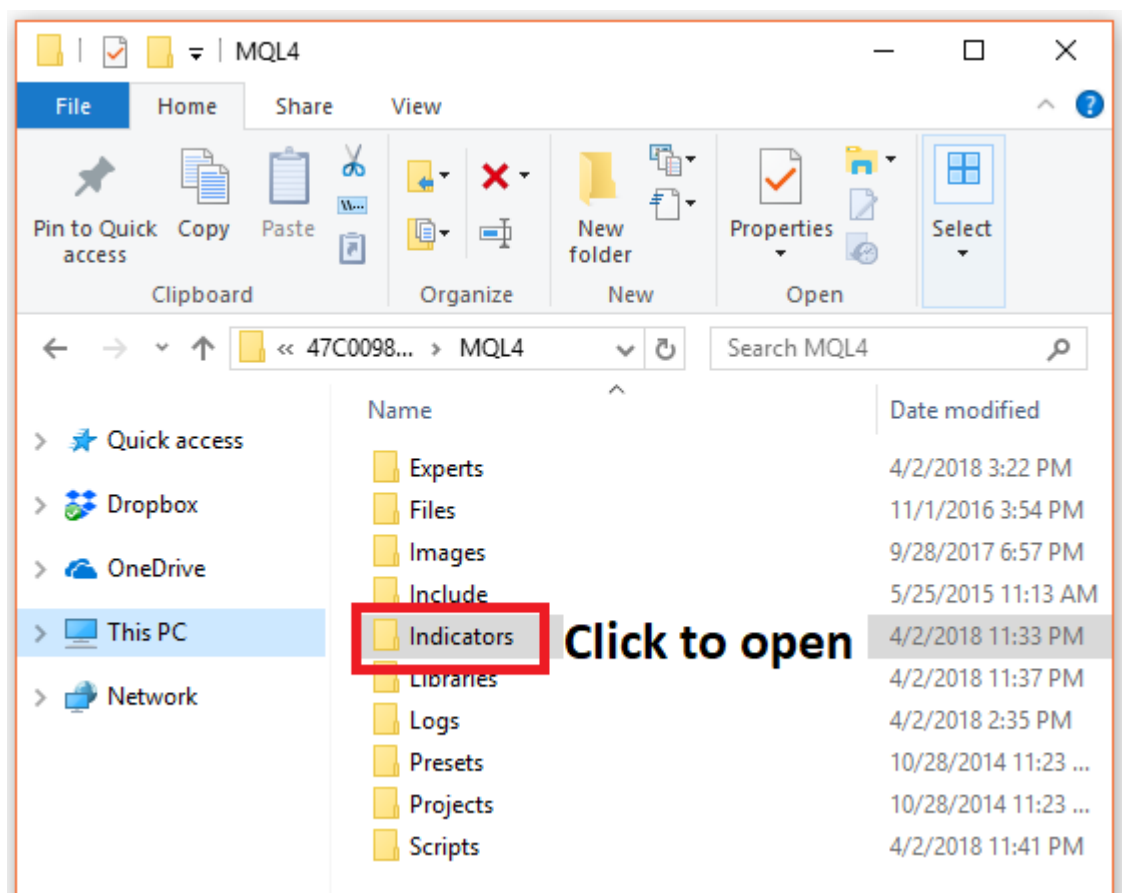
5. Navigate back to MQL4 Folder

- CLICK LINK TO LAUNCH IMAGE: <https://imgur.com/nYUdTMp>



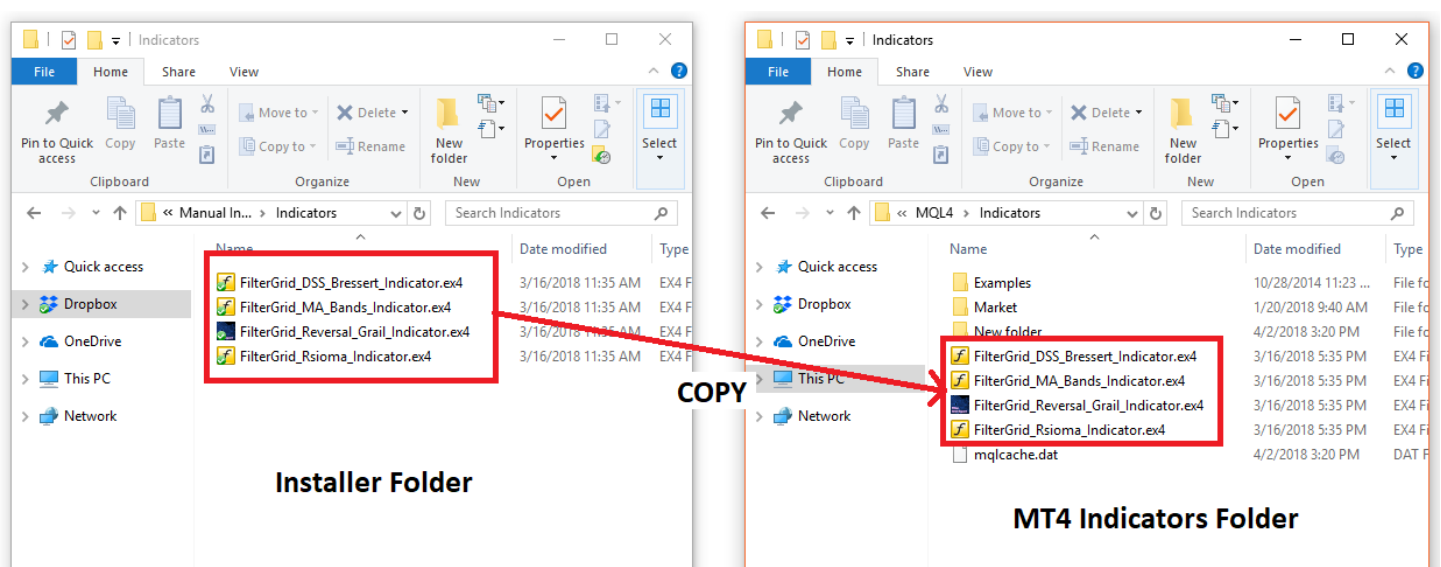
6. Open Indicators folder

- CLICK LINK TO LAUNCH IMAGE: <https://imgur.com/Xh42Tgh>



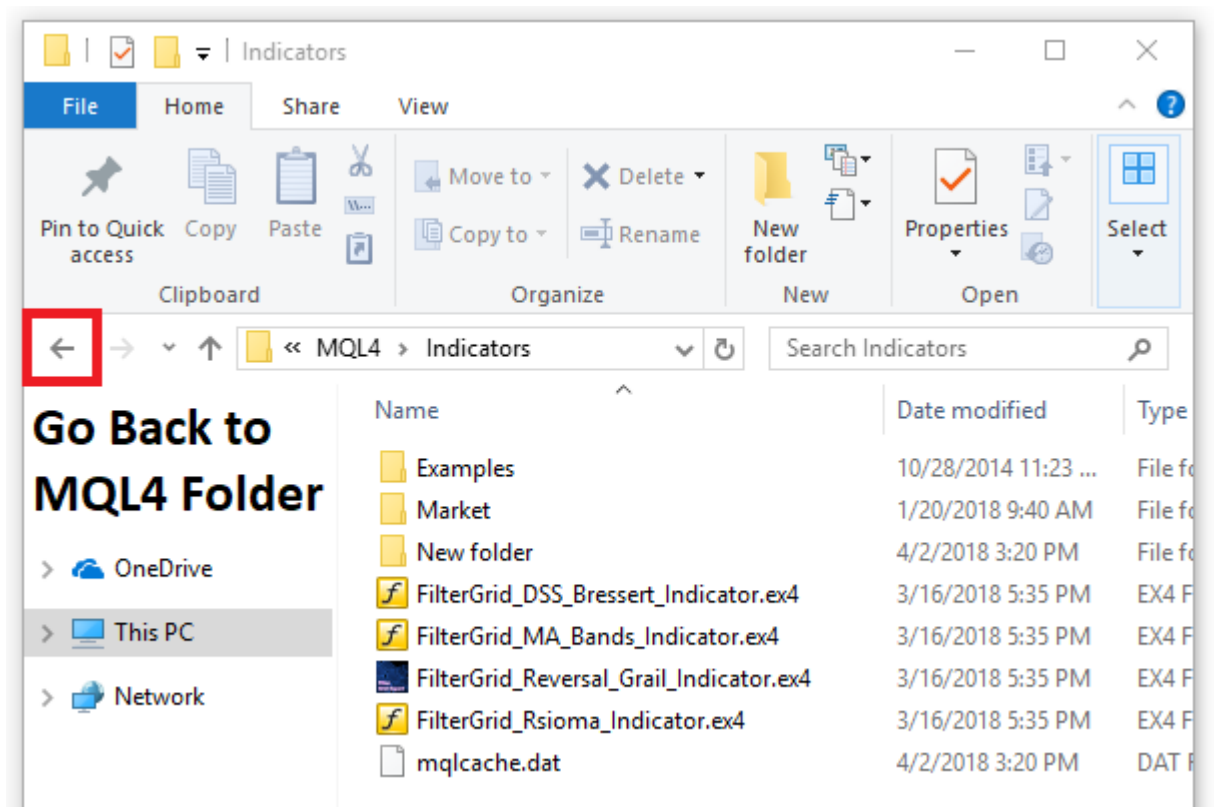
7. Copy the following: ‘FilterGrid_DSS_Bressert_Indicator.ex4’, ‘FilterGrid_MA_Bands_Indicator.ex4’, ‘FilterGrid_Reversal_Grail_Indicator.ex4’, & ‘FilterGrid_Rsioma_Indicator.ex4’ from Installer’s Indicators Folder to MT4 Indicators Folder

- CLICK LINK TO LAUNCH IMAGE: <https://imgur.com/U5MRSJF>



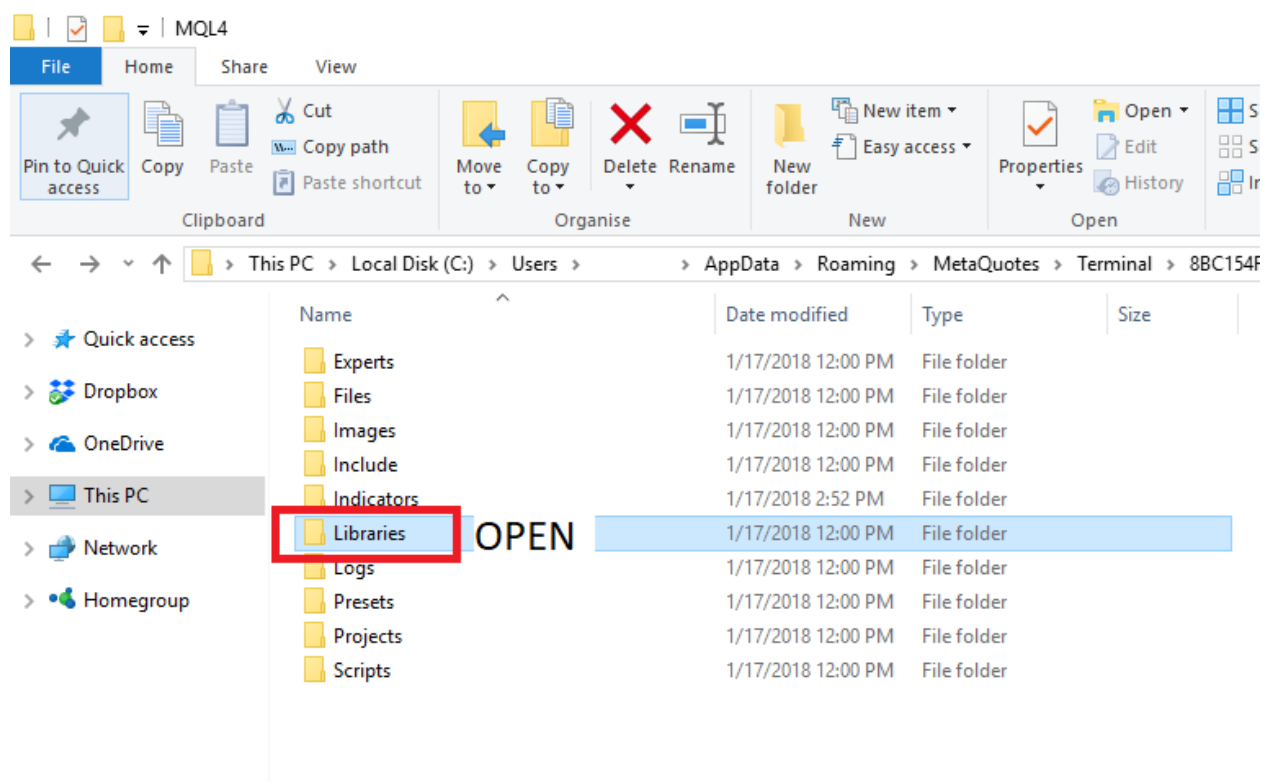
8. Navigate back to MQL4 Folder

- CLICK LINK TO LAUNCH IMAGE: <https://imgur.com/2EuWEQX>



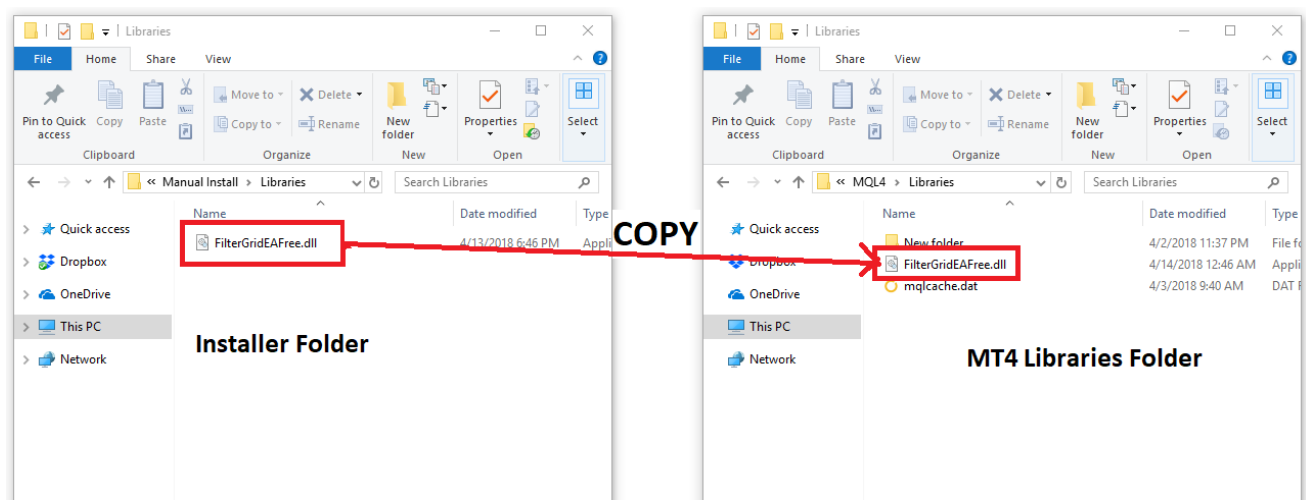
9. Open Libraries folder

- CLICK LINK TO LAUNCH IMAGE: <https://imgur.com/gIYbOlr>



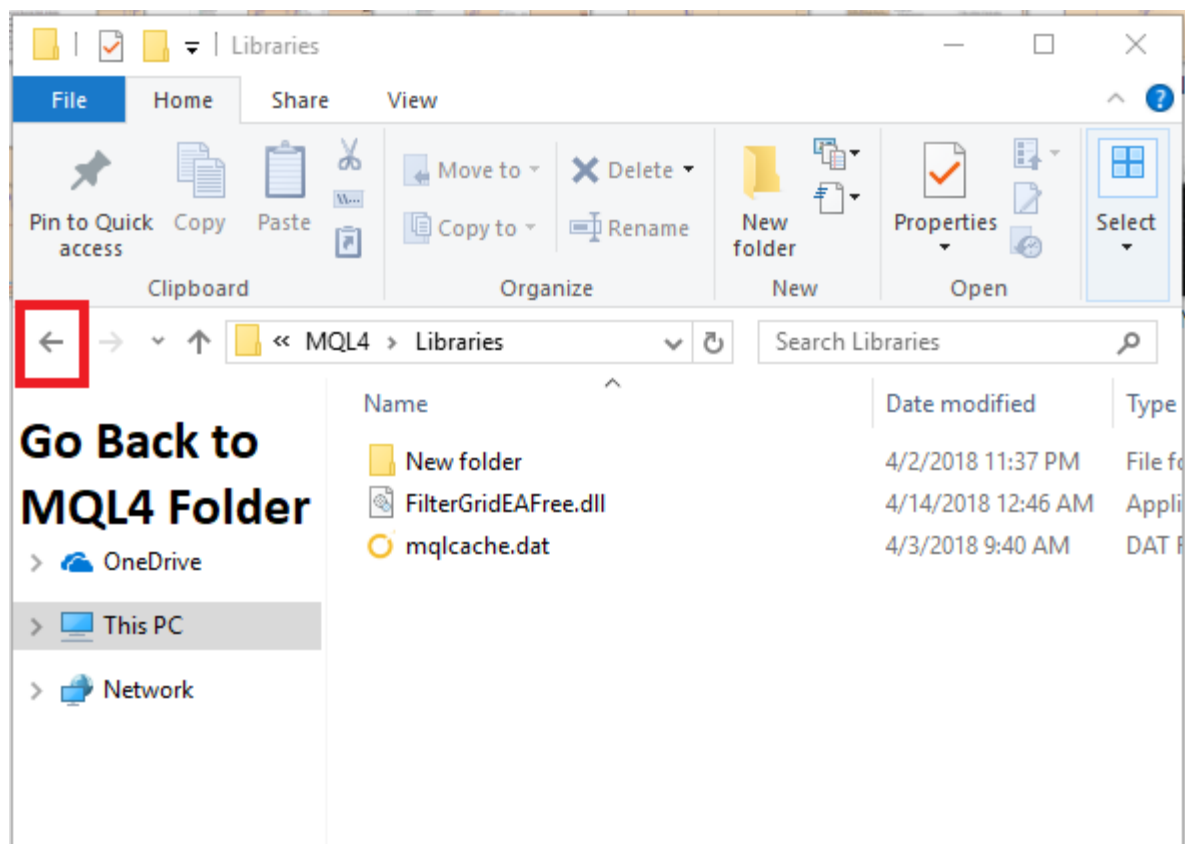
10. Copy “FilterGridEAFree.dll” from Installer’s Libraries Folder to MT4 Libraries Folder

- CLICK LINK TO LAUNCH IMAGE: <https://imgur.com/qVqG7SU>



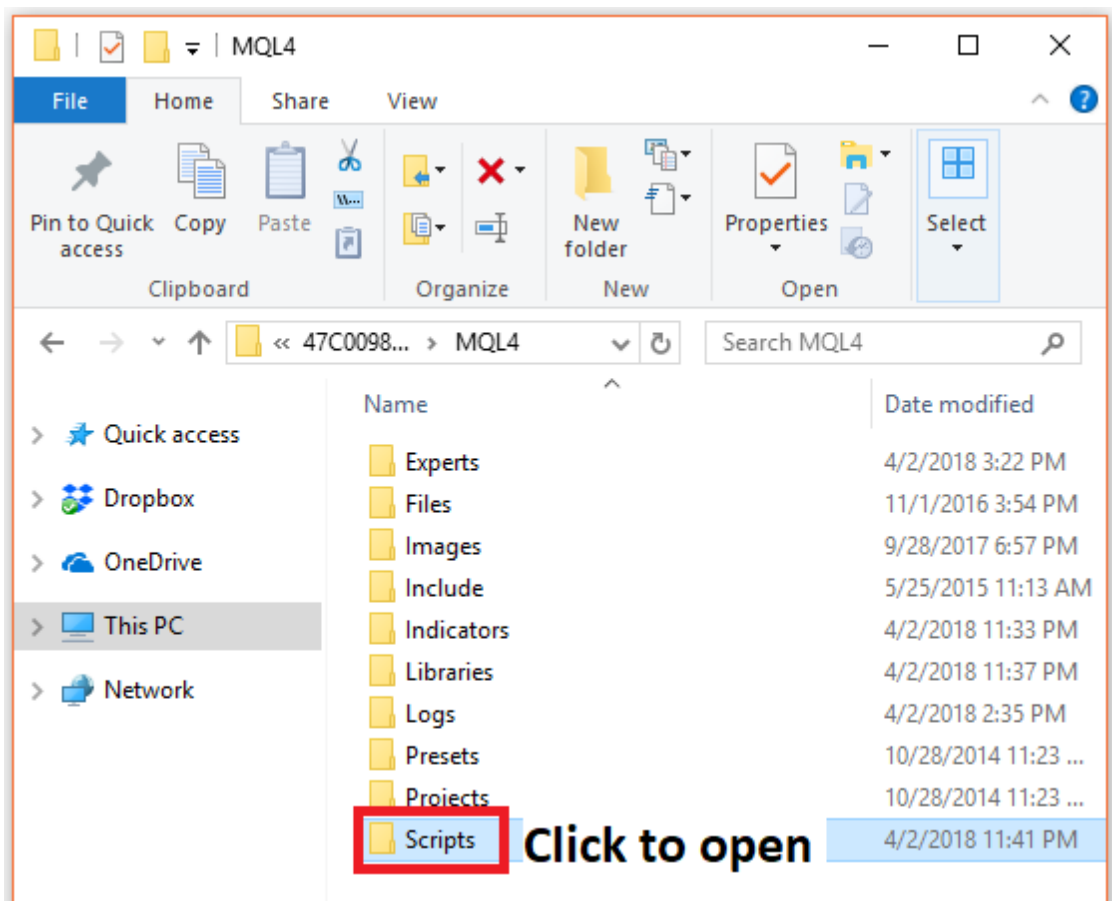
11. Navigate back to MQL4 Folder

- CLICK LINK TO LAUNCH IMAGE: <https://imgur.com/s5pi7Ap>



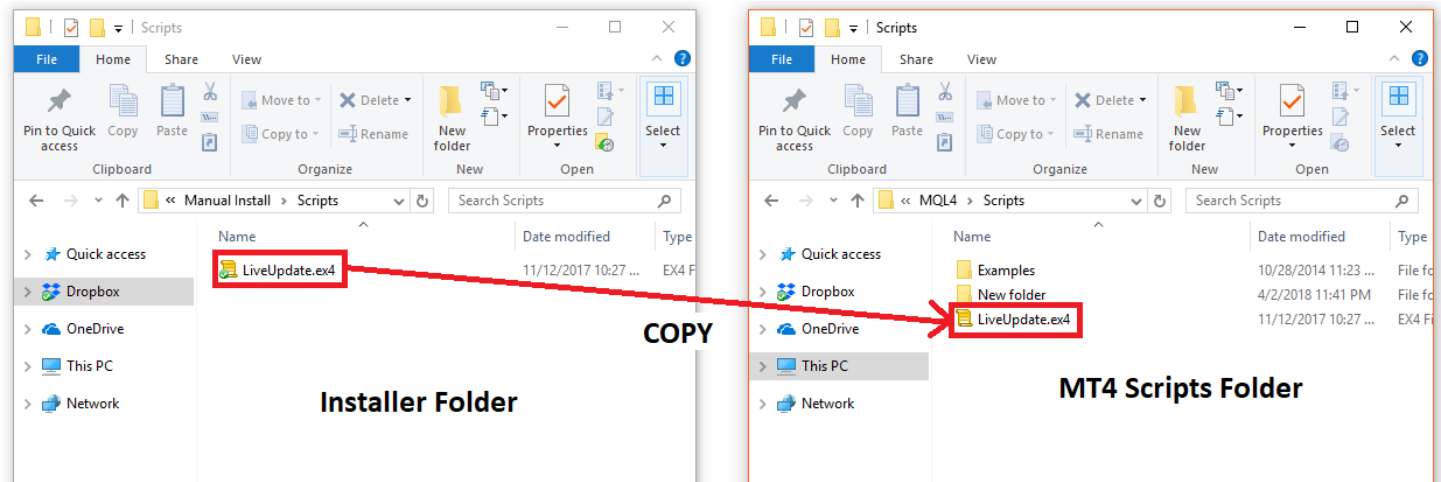
12. Open Scripts folder

- CLICK LINK TO LAUNCH IMAGE: <https://imgur.com/7WnffF6>



13. Copy “LiveUpdate.ex4” on Scripts folder. Replace if duplicate file exist.

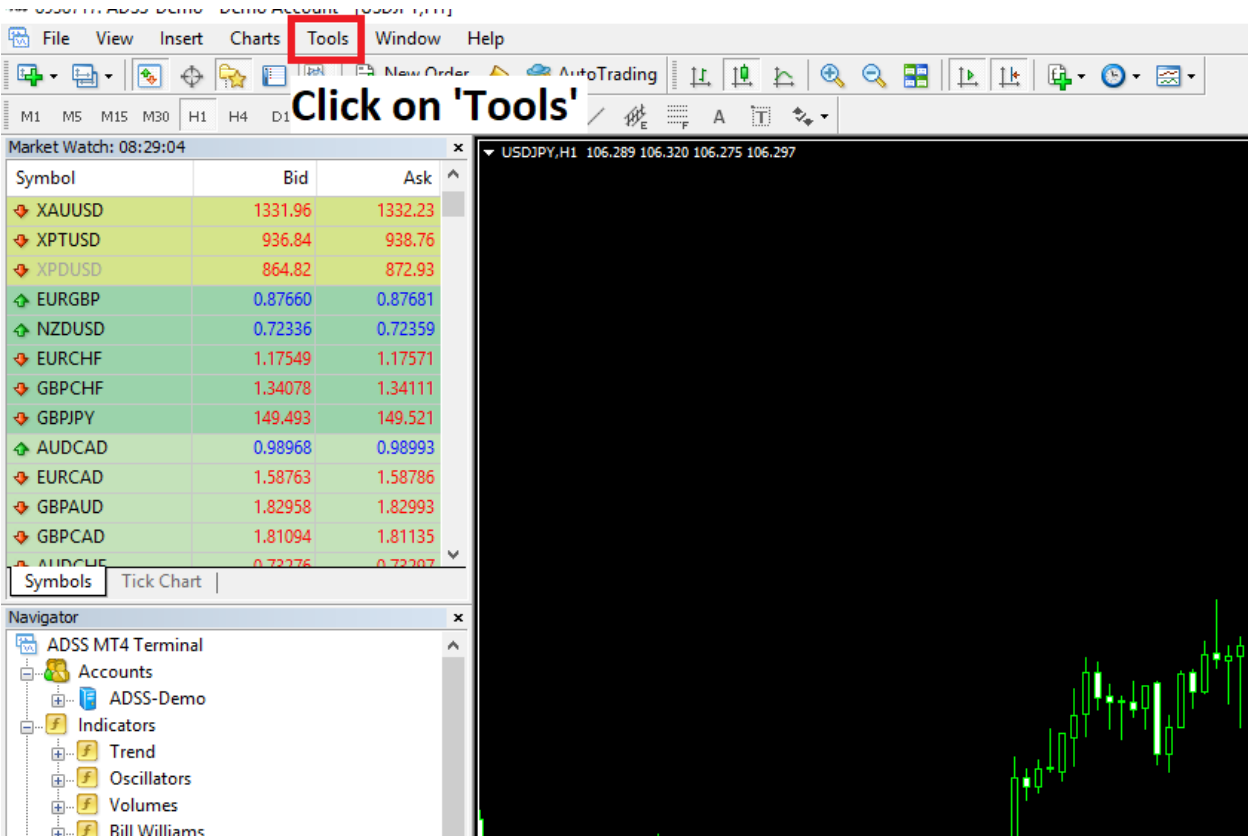
- CLICK LINK TO LAUNCH IMAGE: <https://imgur.com/VVRML8v>



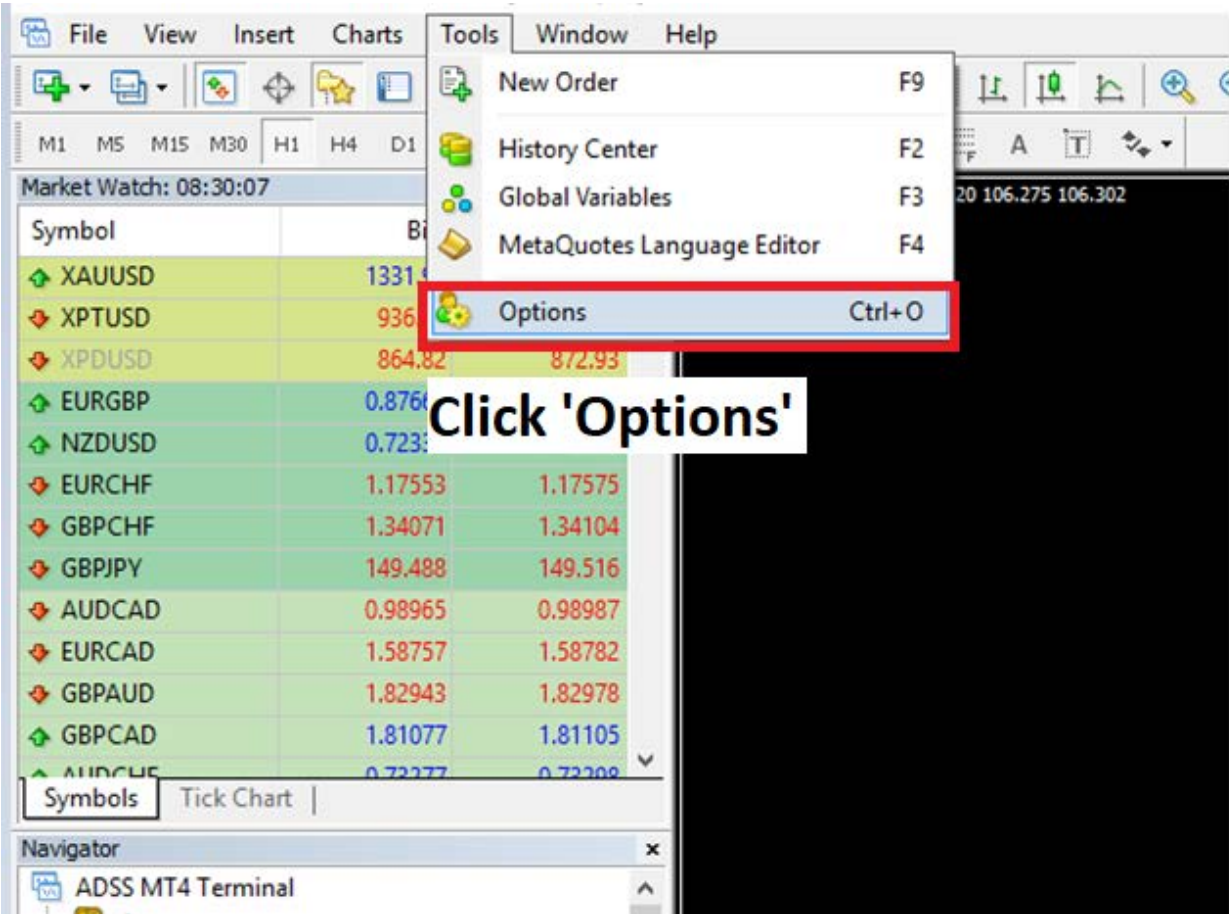
14. Restart your MT4 Platform (Open and Close MT4) for changes to apply

15. Allow DLL Imports

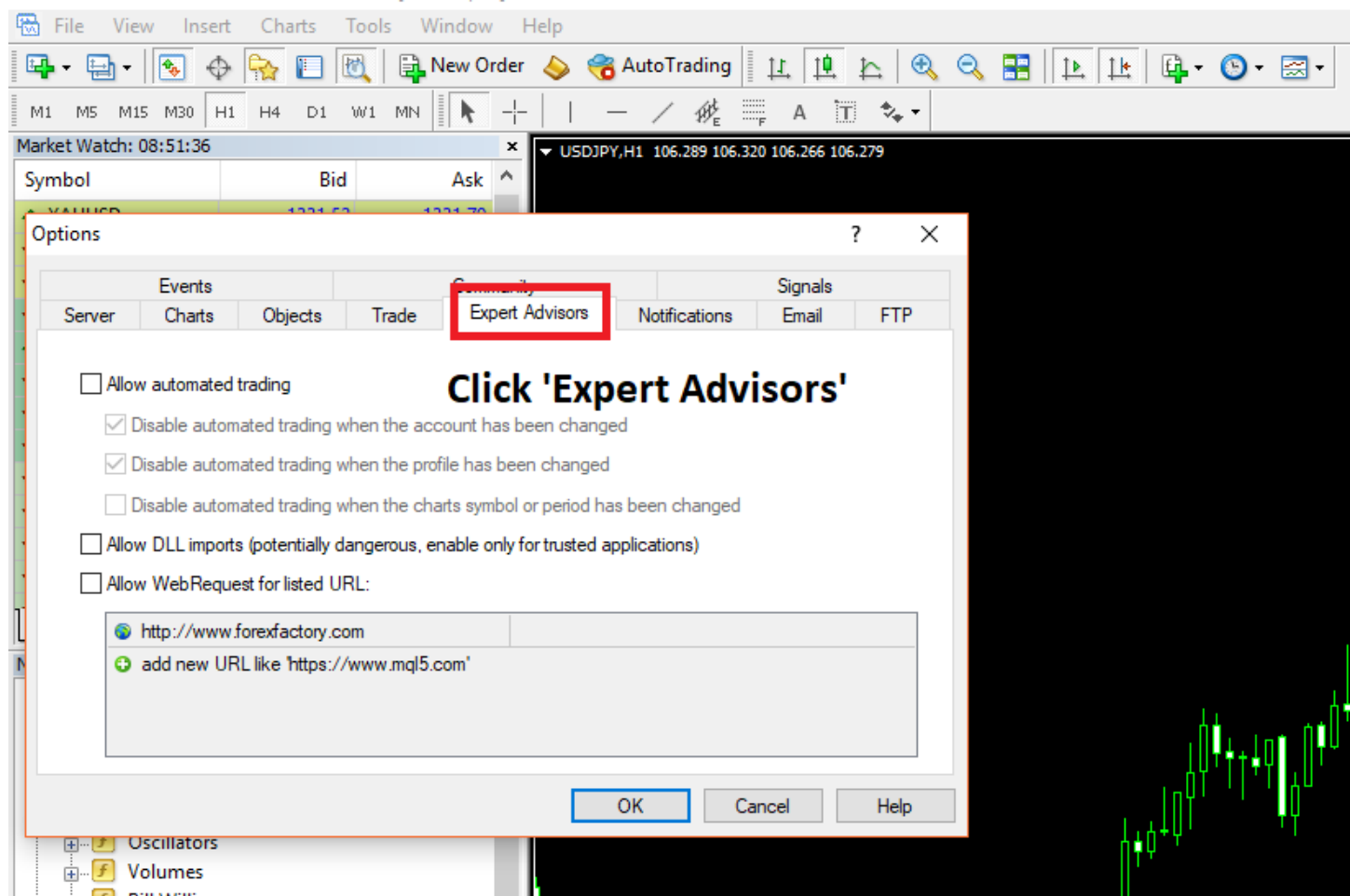
- Click on 'Tools', CLICK LINK TO LAUNCH IMAGE: <https://imgur.com/qnm8pPM>



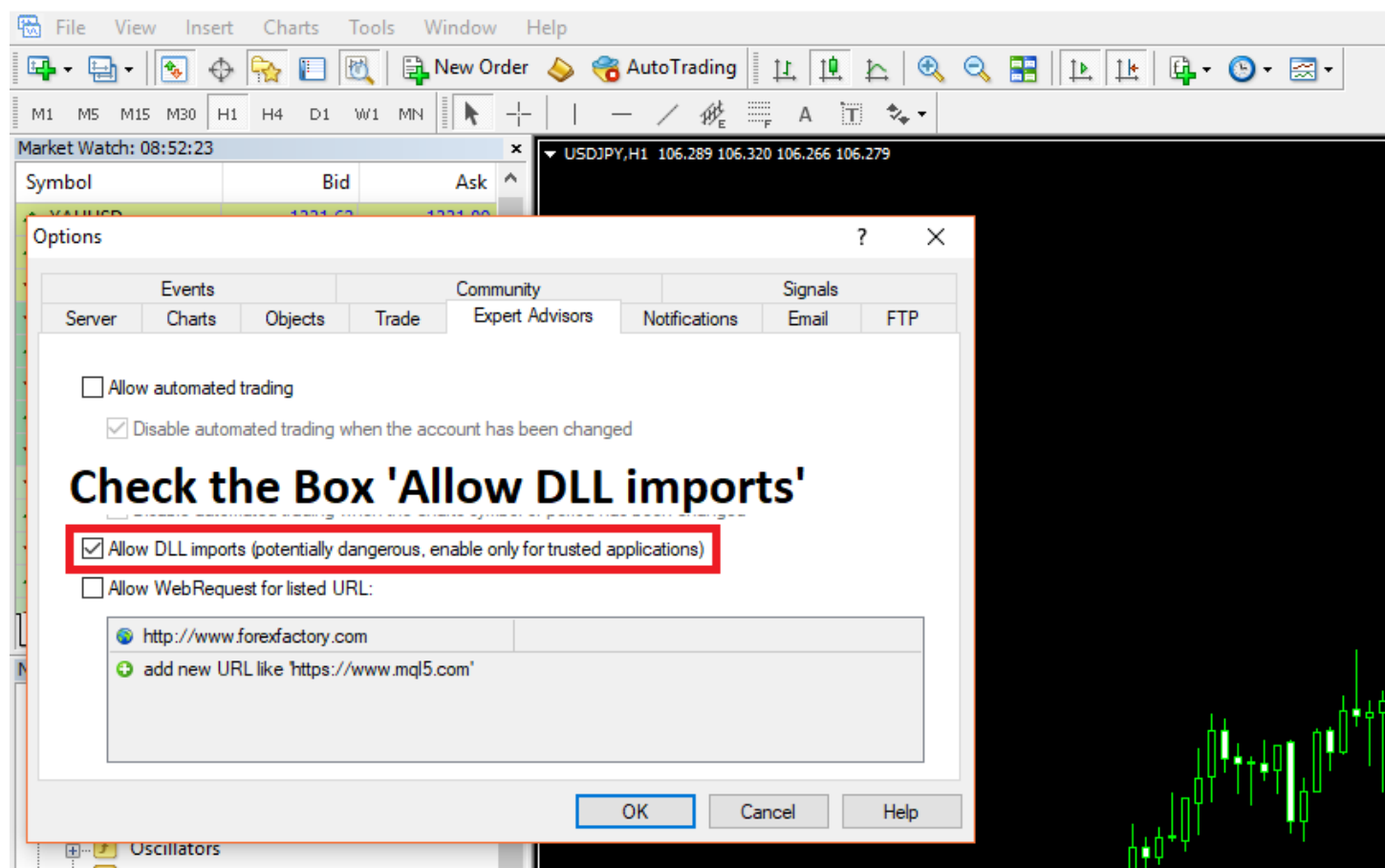
- Click 'Options', CLICK LINK TO LAUNCH IMAGE: <https://imgur.com/9X0zuVm>



- Click on the Expert Advisors Tab, CLICK LINK TO LAUNCH IMAGE: <https://imgur.com/FUIWHcr>

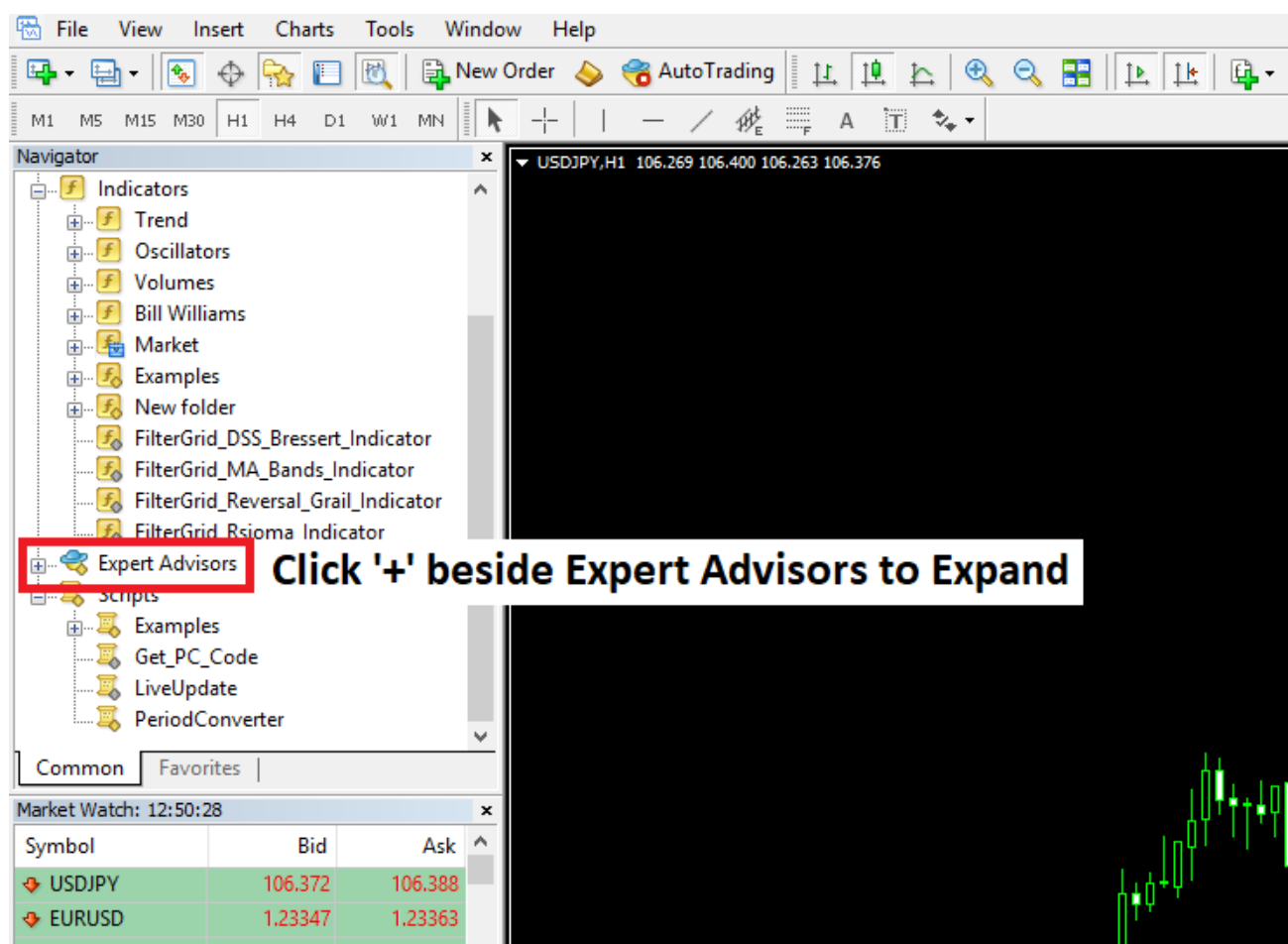


- Check the box 'Allow DLL Imports' then Click 'OK' to Confirm, CLICK LINK TO LAUNCH IMAGE: <https://imgur.com/kEw9hbx>

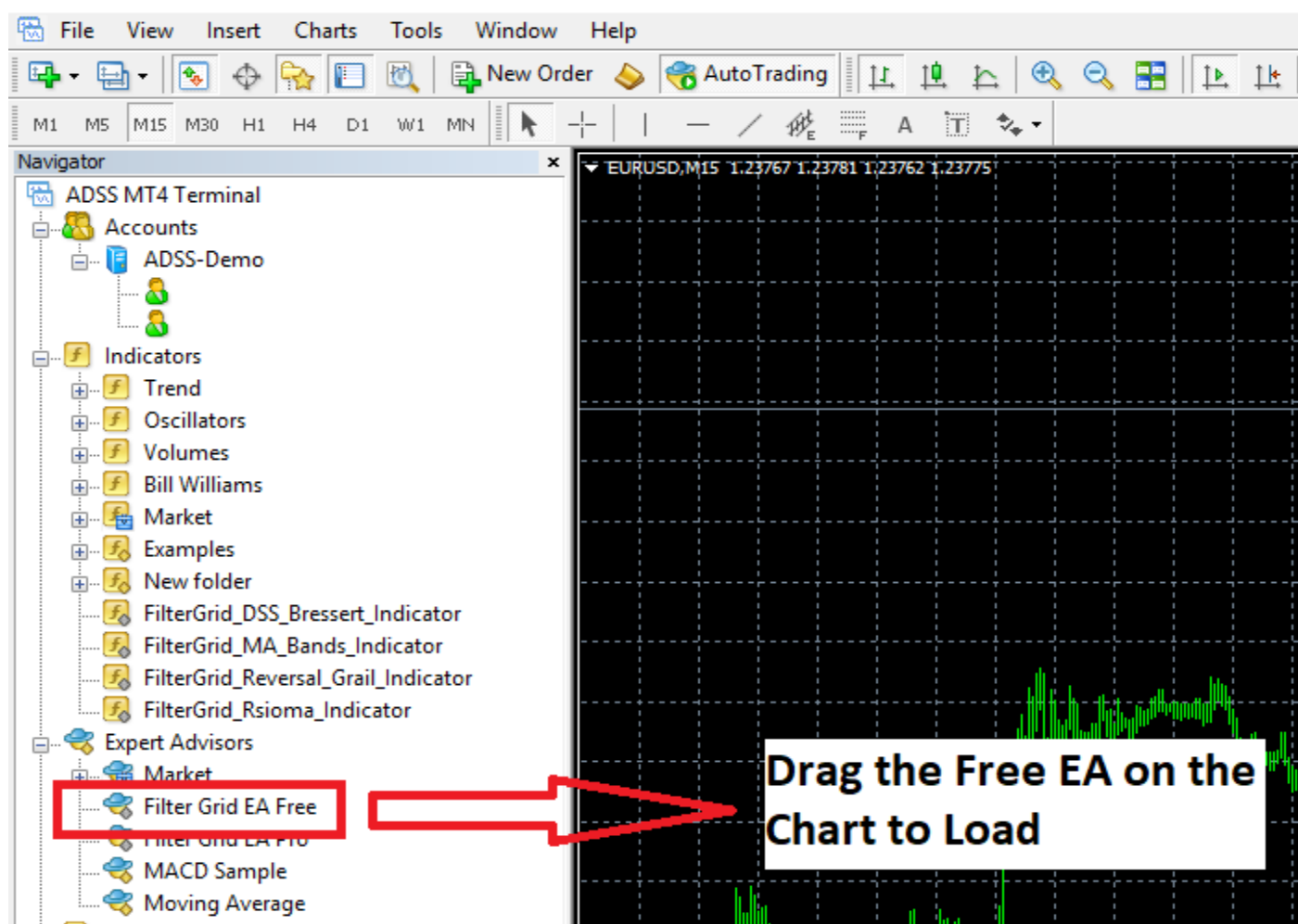


16. Attach 'Filter Grid EA Free' on the chart. You can find it on 'Expert Advisors' section on your Navigator tab.

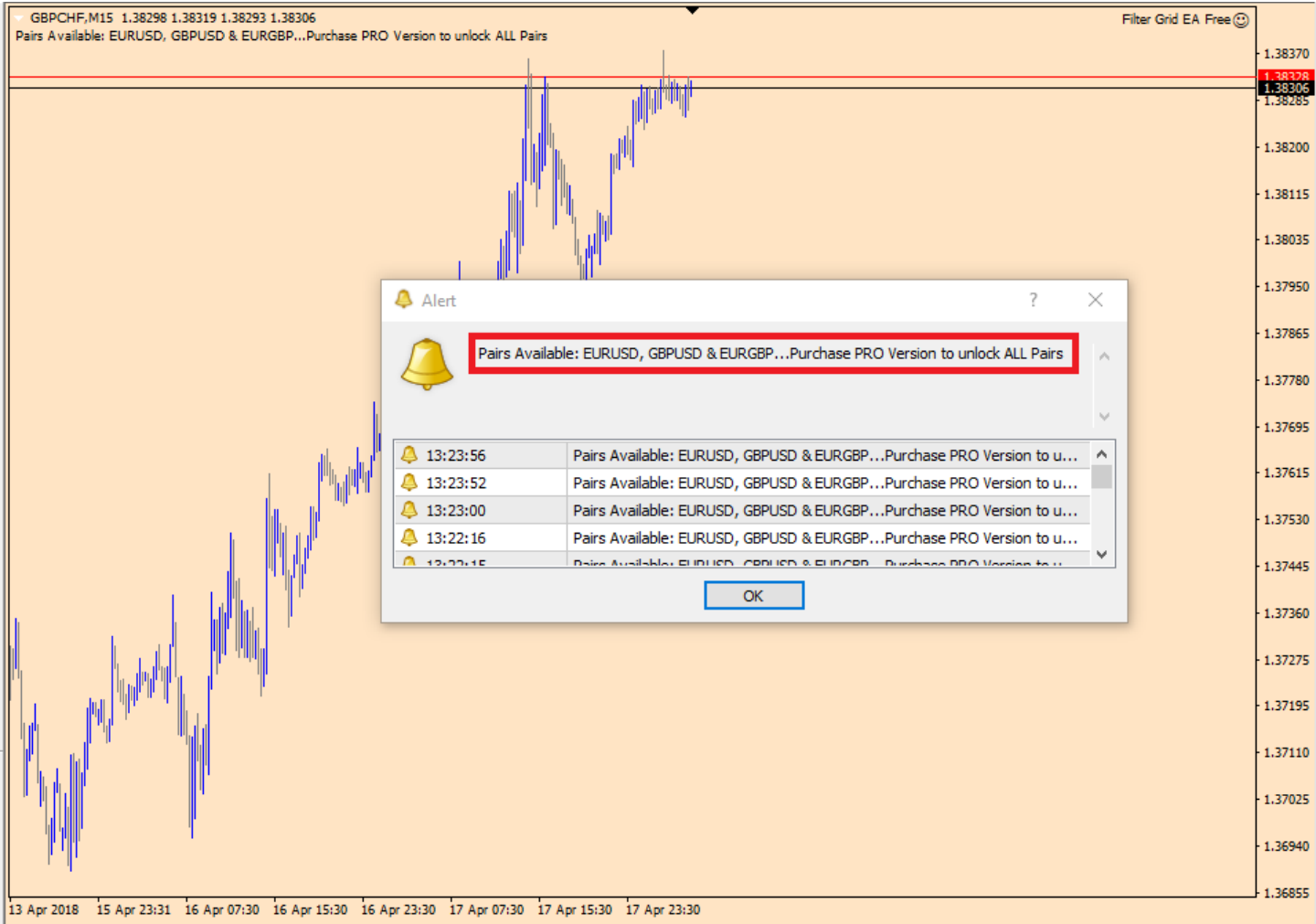
- Click "+" Symbol beside Expert Advisors, CLICK LINK TO LAUNCH IMAGE: <https://imgur.com/zAeRWsi>



- Attach the EA on the chart to Load, CLICK LINK TO LAUNCH IMAGE: <https://imgur.com/RLB6aMx>



17. The Free version of Filter Grid only works on EURUSD, GBPUSD, and EURGBP pairs. If you have loaded it in a pair the FREE EA does not support, E.g. GBPCHF it will show a pop up message showing the pairs where it should be loaded. If you want your EA to work in **ALL** pairs you should purchase the **FILTER GRID PRO**. **CLICK LINK TO LAUNCH IMAGE:** <https://imgur.com/AWsnihx>



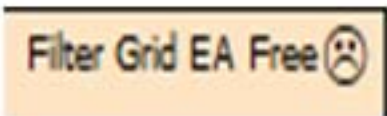
18. Ensure that the EA will trade in Your Charts. For your reference, the Filter Grid Pro EA Free Icon on the upper right corner of your chart should be in **SMILING FACE**. **CLICK LINK TO LAUNCH IMAGE:** <https://imgur.com/2pAJzko>

Icon in 'Smiling Face'



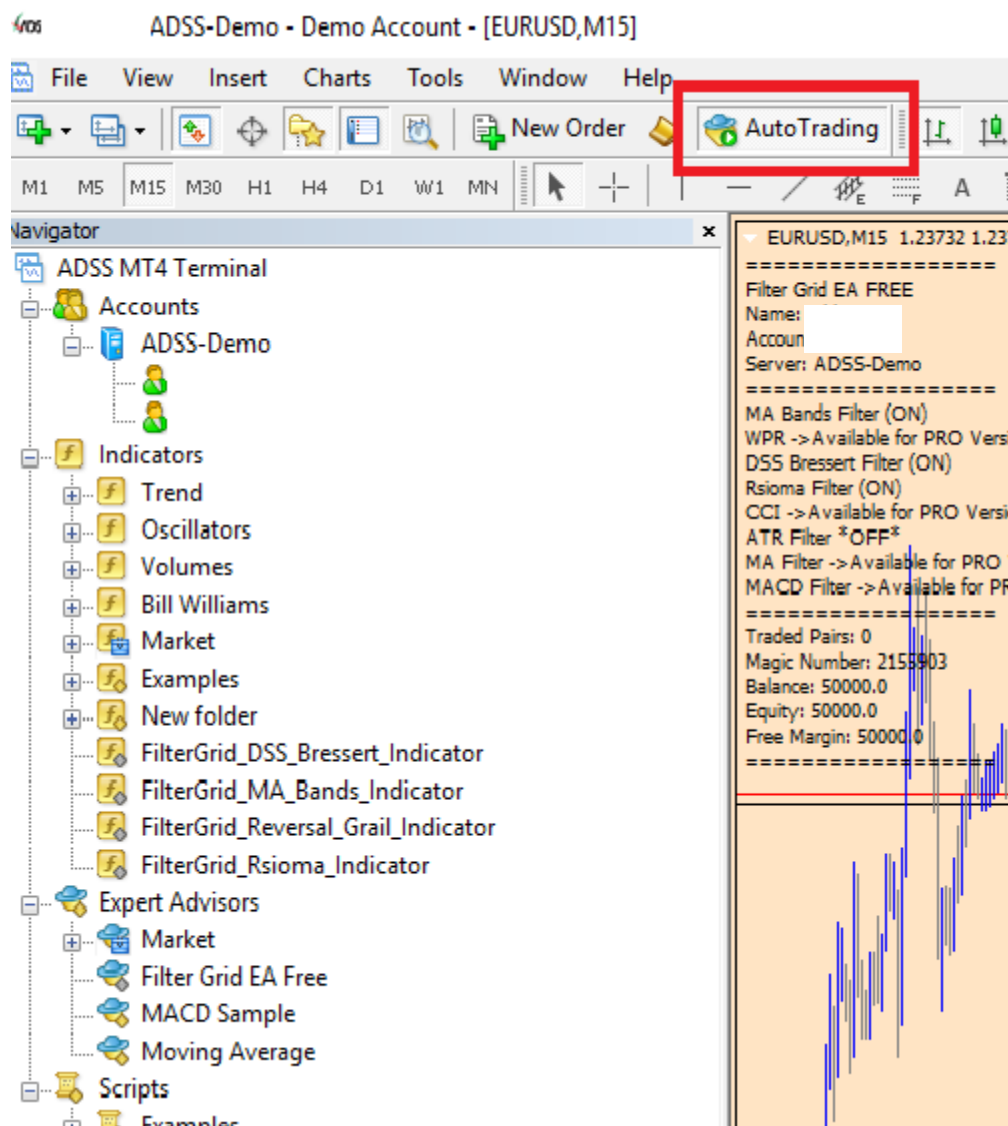
The Free EA will Trade

Icon in 'Sad Face'

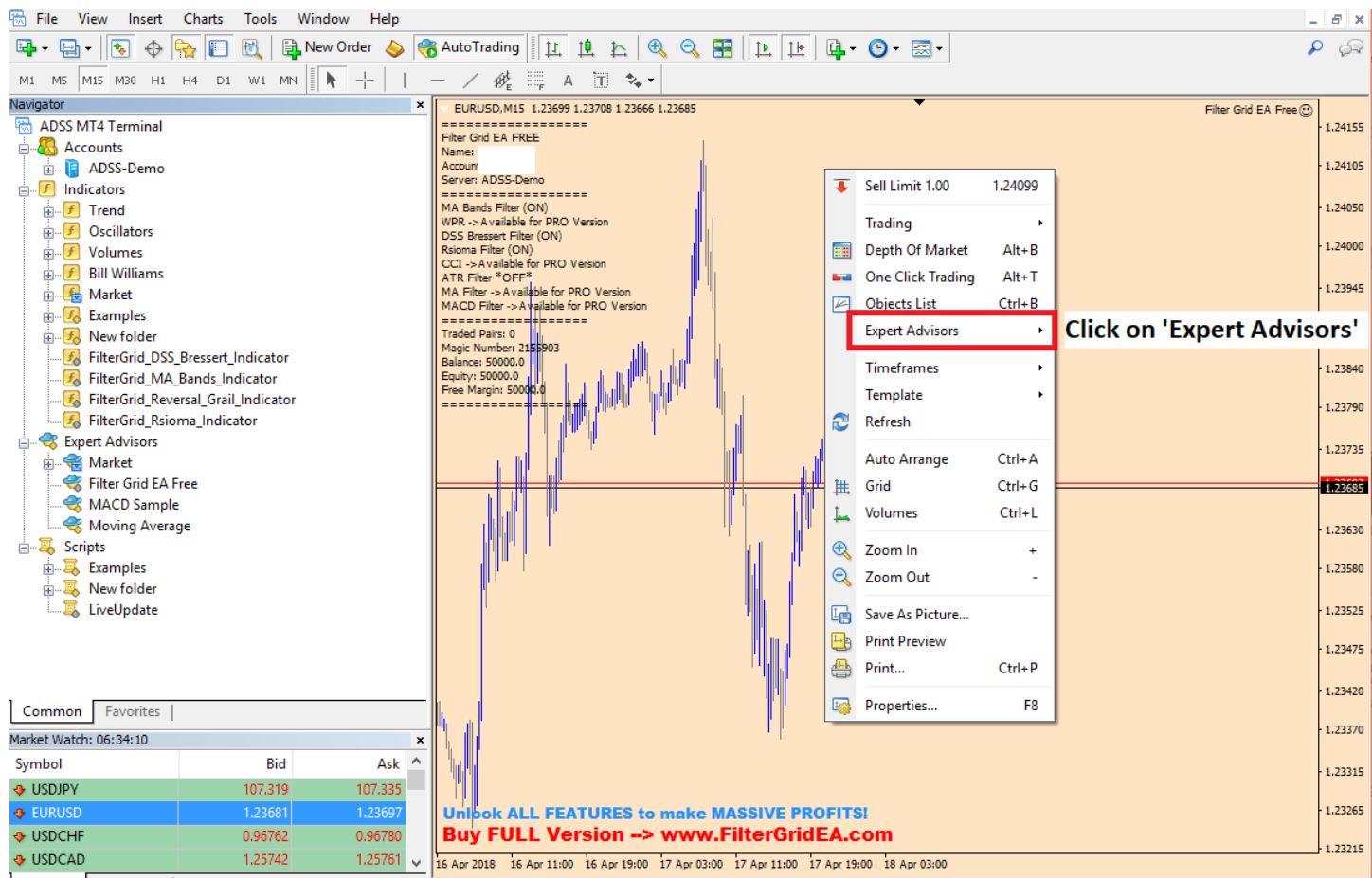


The EA will not Trade

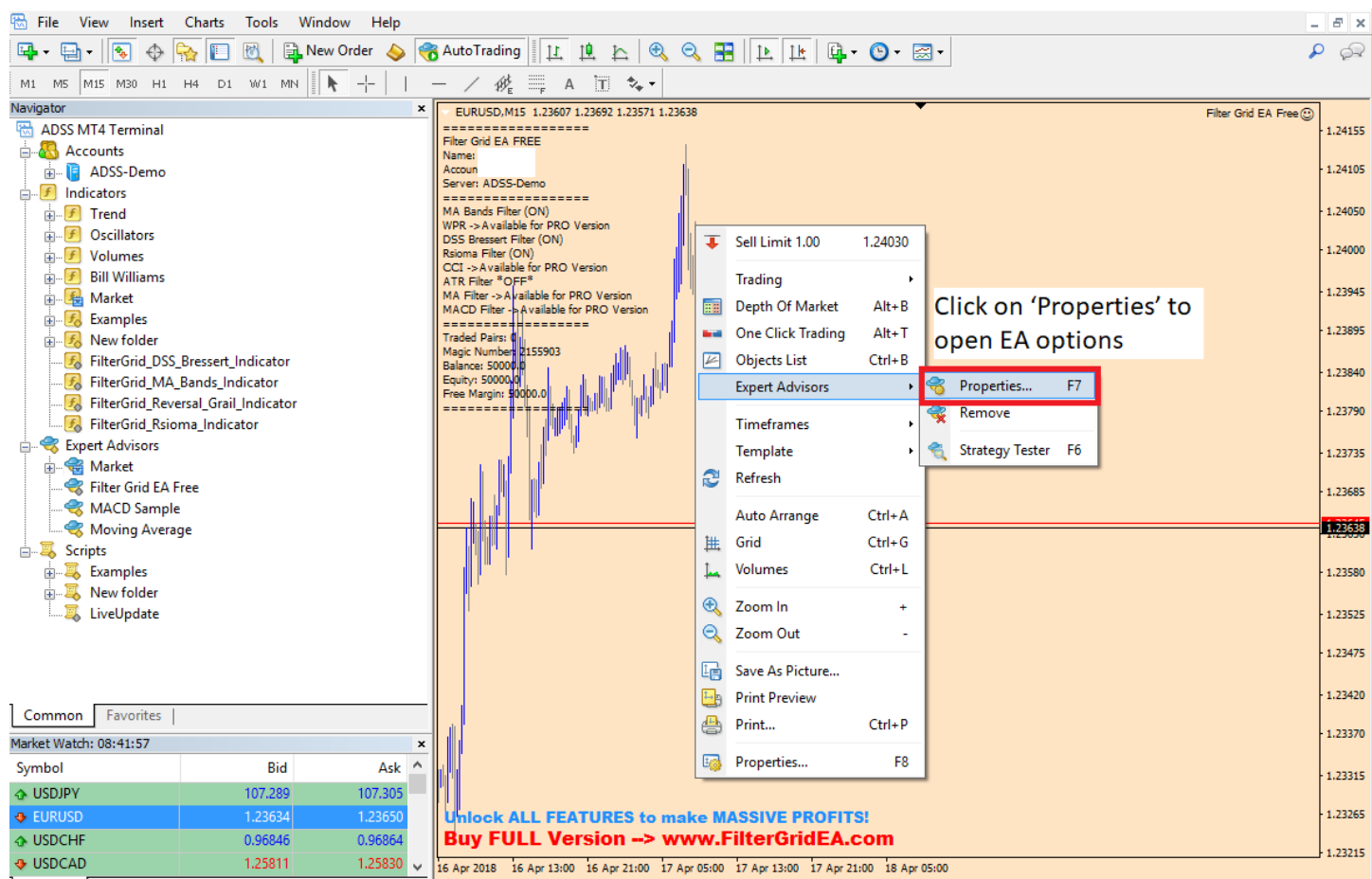
19. Always Turn On the 'Auto Trading' Button on your MT4 Platform , CLICK LINK TO LAUNCH IMAGE: <https://imgur.com/9qMN6Qi>



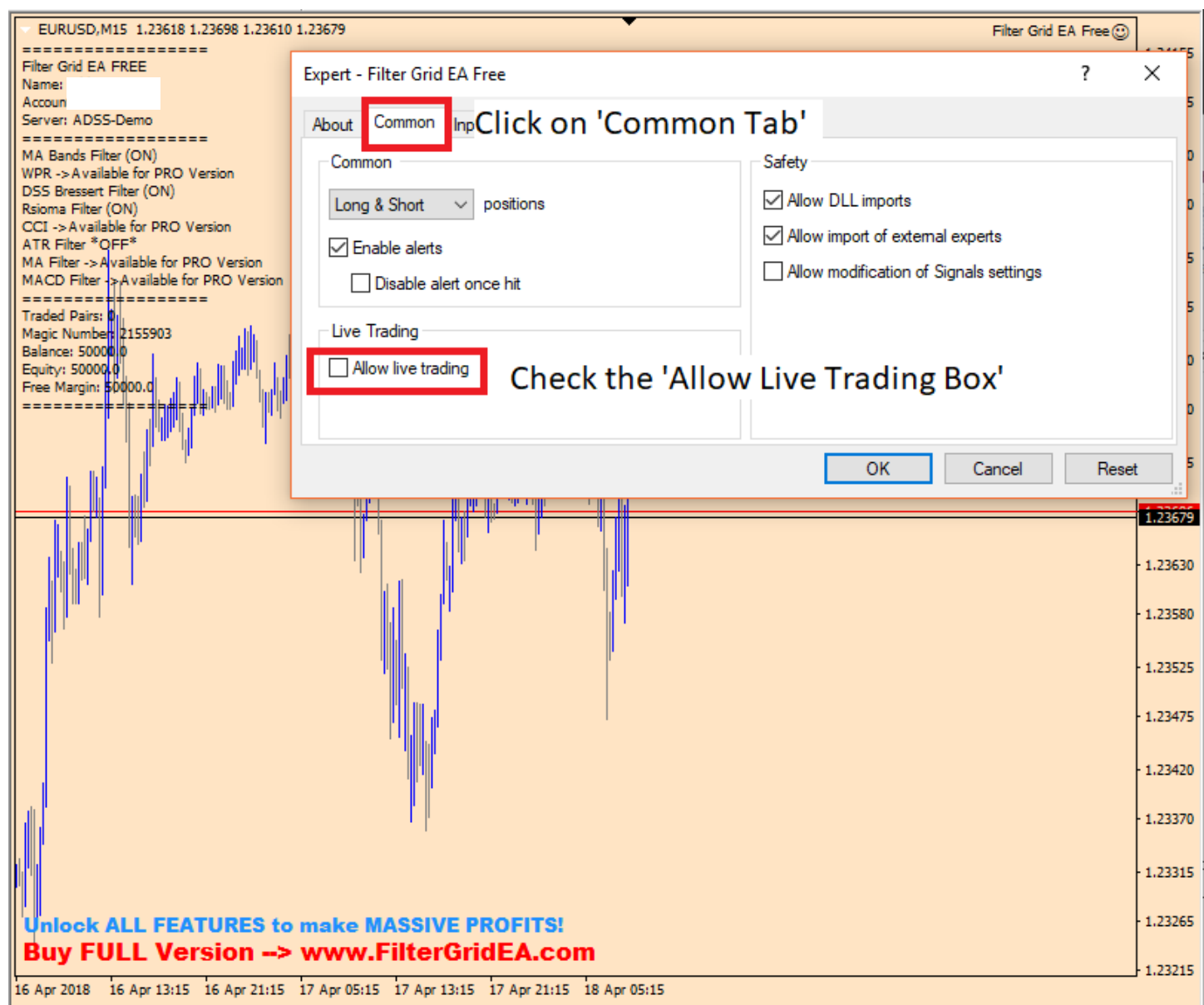
20. Check your Expert Advisors Settings , Right Click on your Chart, Click on 'Expert Advisors' , CLICK LINK TO LAUNCH IMAGE: <https://imgur.com/oGmksG2>



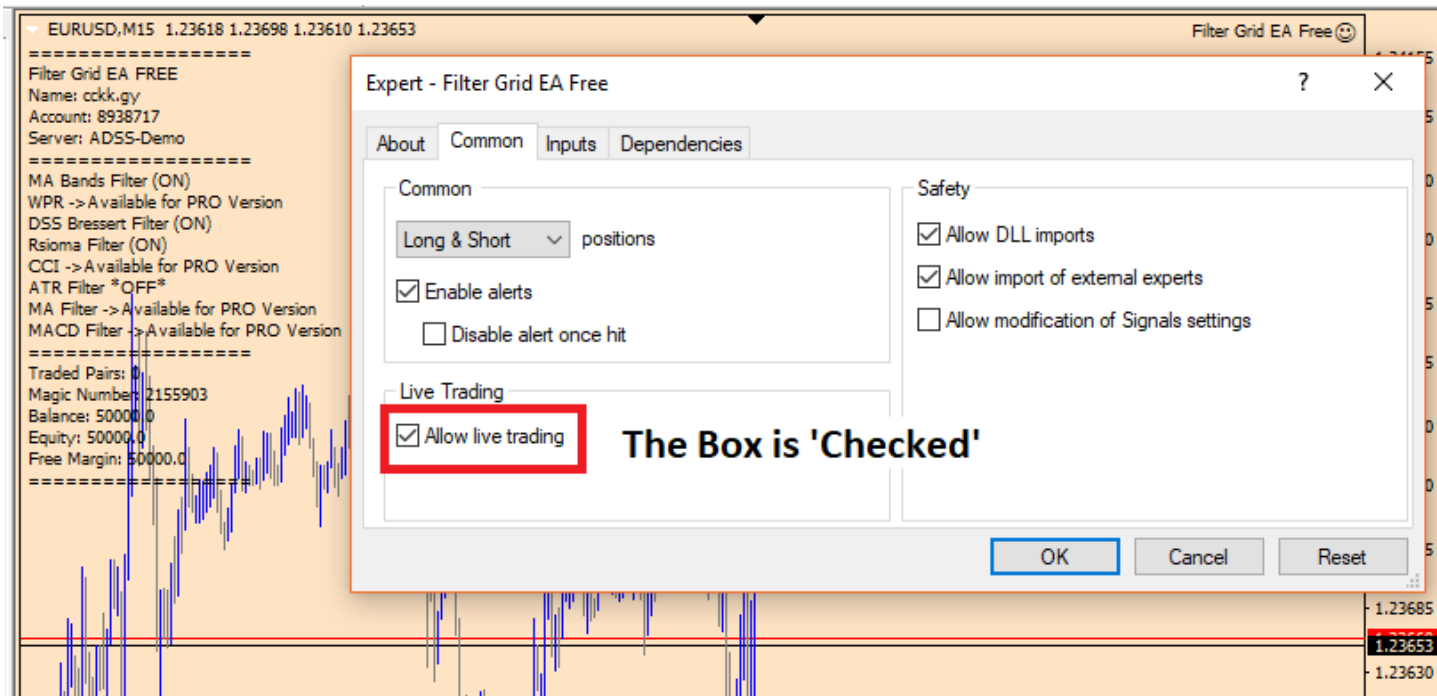
- Click on 'Properties' to open EA options, CLICK LINK TO LAUNCH IMAGE: <https://imgur.com/GZ89Lbg>



- Go to 'Common Tab', Check the 'Allow live trading' box, CLICK LINK TO LAUNCH IMAGE: <https://imgur.com/kEw9hbz>



‘Allow live trading’ is checked then click ‘OK’ to Confirm and apply changes, [CLICK LINK TO LAUNCH IMAGE:](https://imgur.com/Yckdh2C)



21. When the EA is correctly loaded and has accessed our servers, it should look like the image below with Smiling Face ‘Filter Grid Pro Icon’ found in the upper right corner of your chart. Note that live internet connection is required to load EA properly. Restart your MT4 if there is no connection after using the installer. [CLICK LINK TO LAUNCH IMAGE:](https://imgur.com/plzMB6c)

