

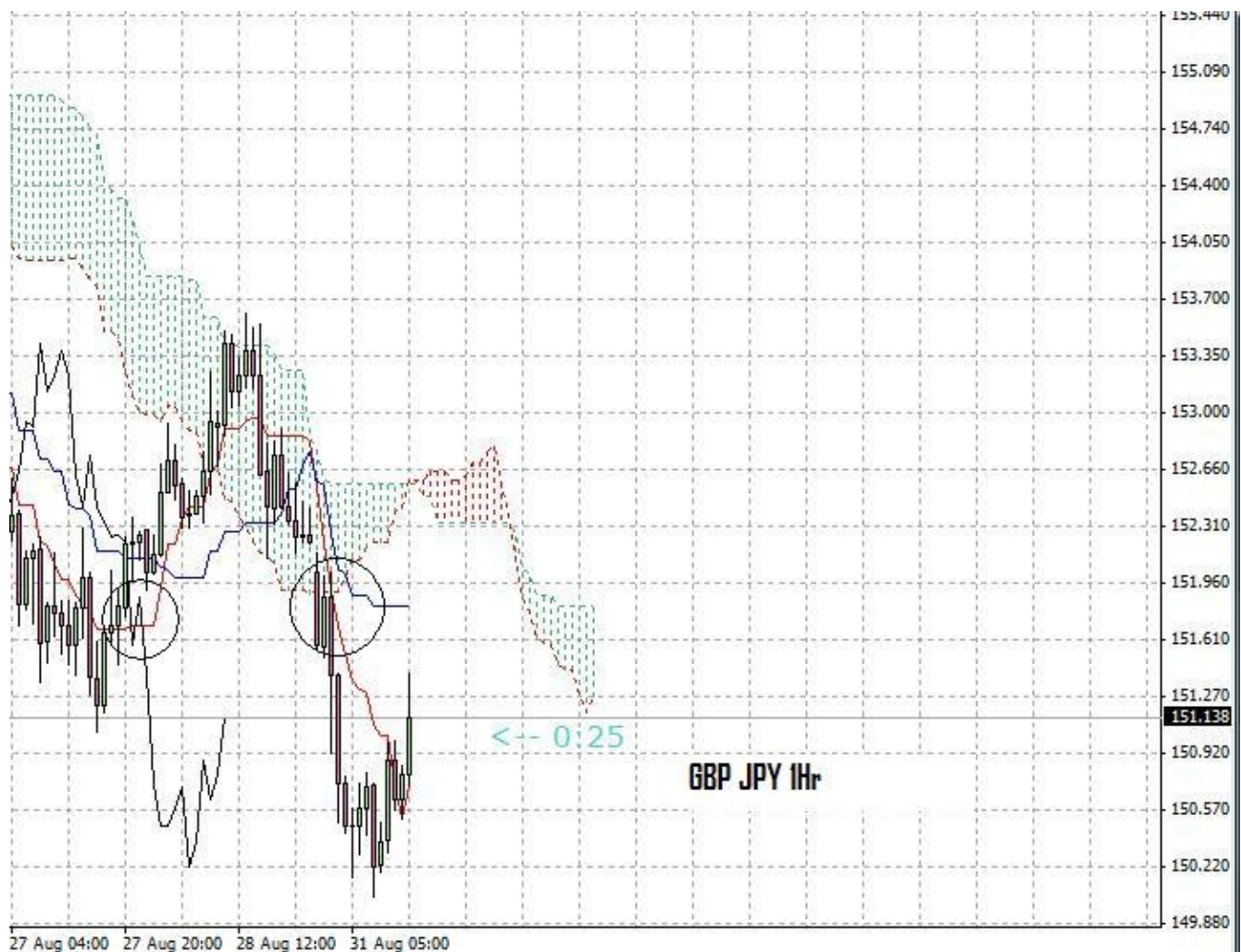
Positions: Short

Entry :151.7x @ 30-Aug-2009 (10:25 PM GMT)

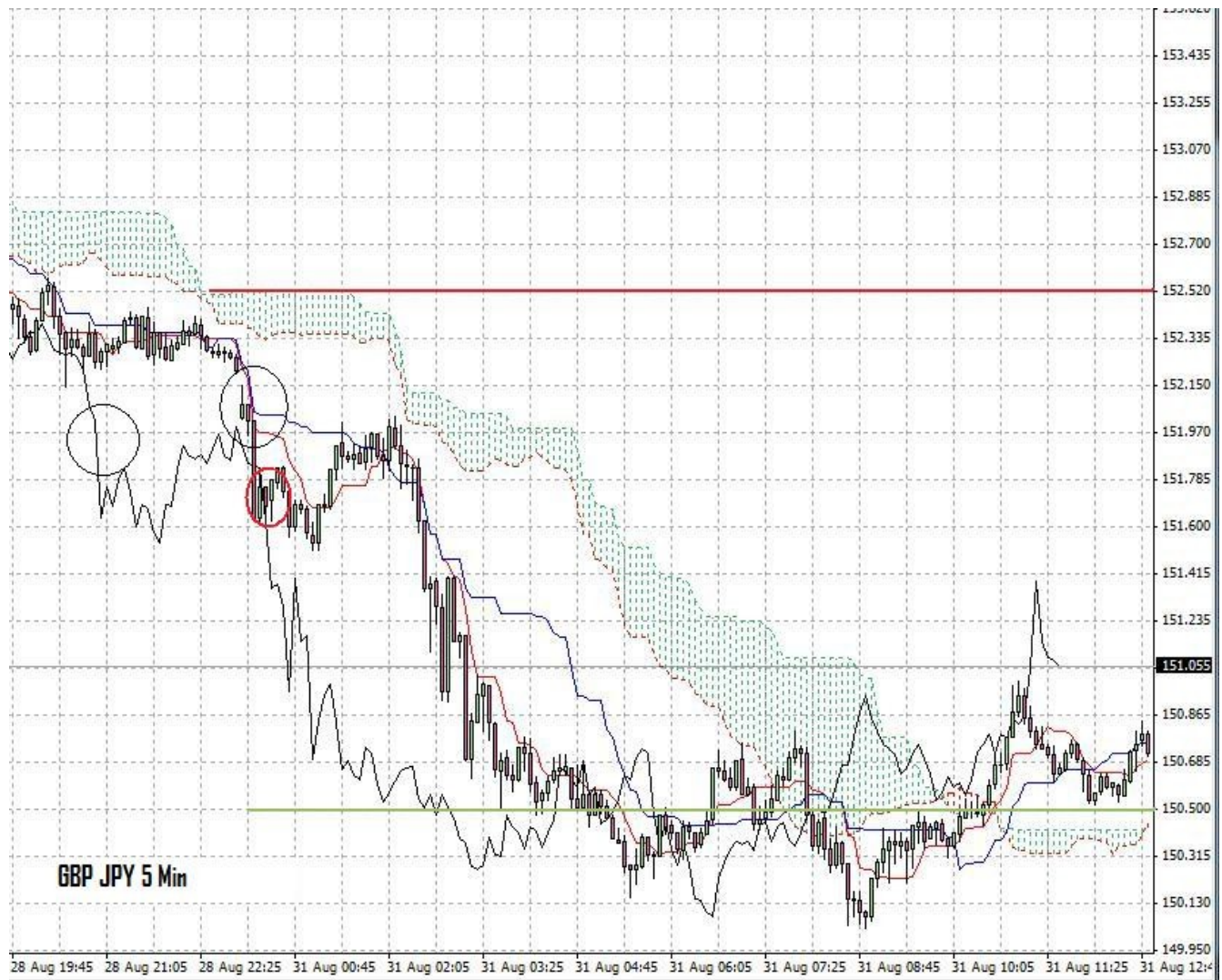
stop :152.5x

limit :150.5x

-Price managed to break the 1Hr Kumo, the 5Mins confirmed, all conditions are met in the Ichimoku monitoring.



**Disclaimer:** all the data provided on this sheet are based upon the Ichimoku system analysis, All statements and expressions in here are my personal opinions, and not meant as investment advice or solicitation .For more information please visit <http://www.forexfactory.com/showthread.php?t=190646>



**Disclaimer:** all the data provided on this sheet are based upon the Ichimkou system analysis, All statements and expressions in here are my personal opinions, and not meant as investment advice or solicitation .For more information please visit <http://www.forexfactory.com/showthread.php?t=190646>