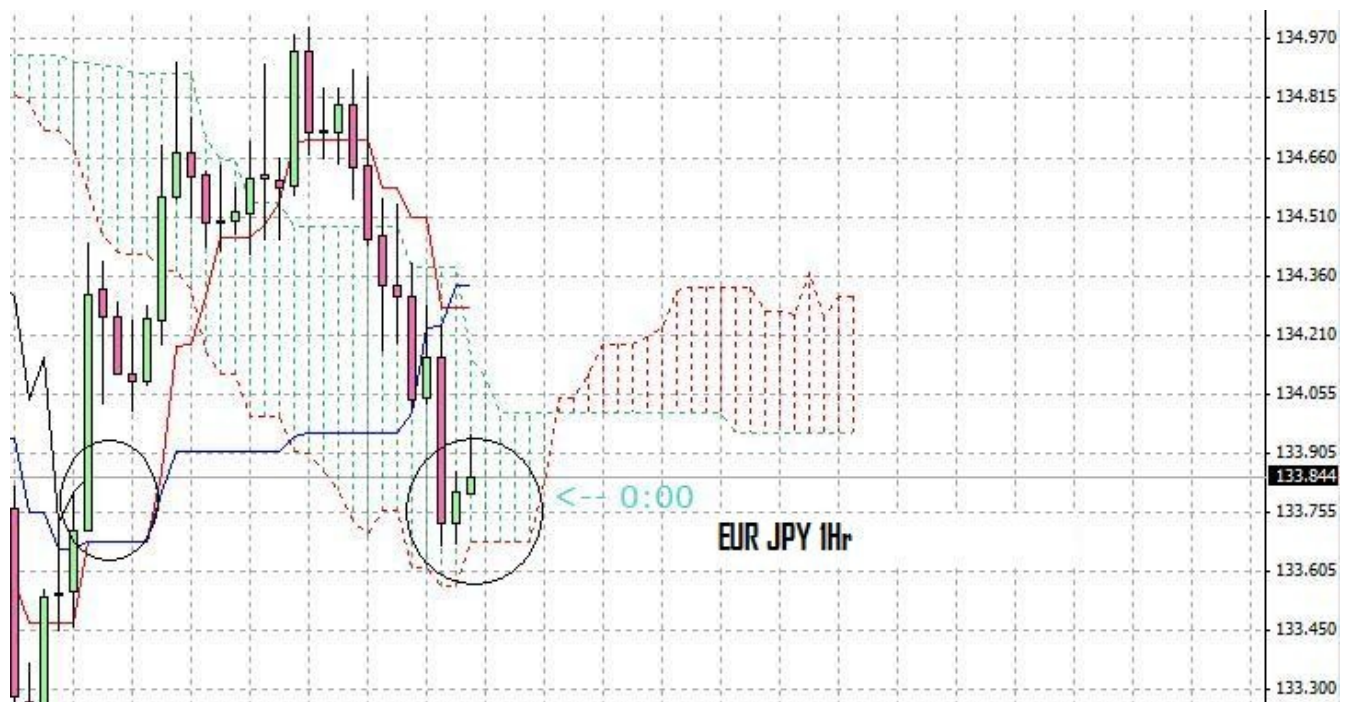


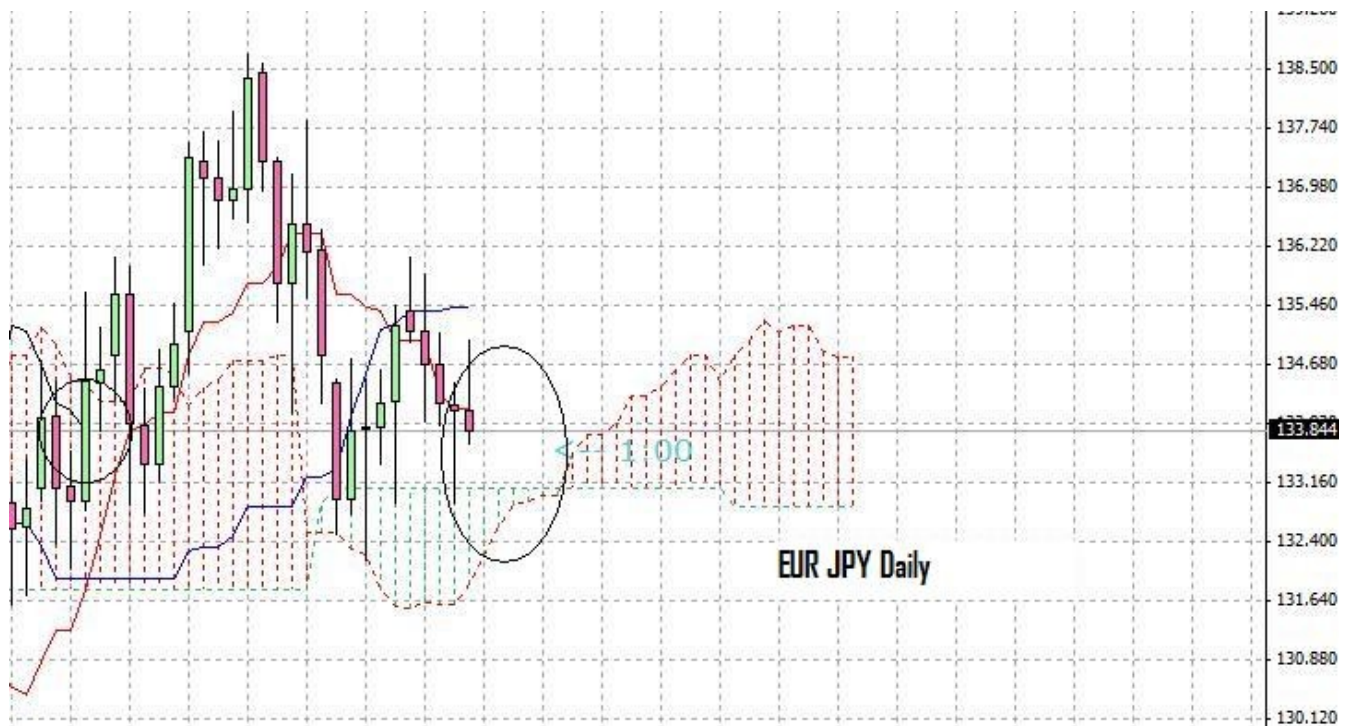
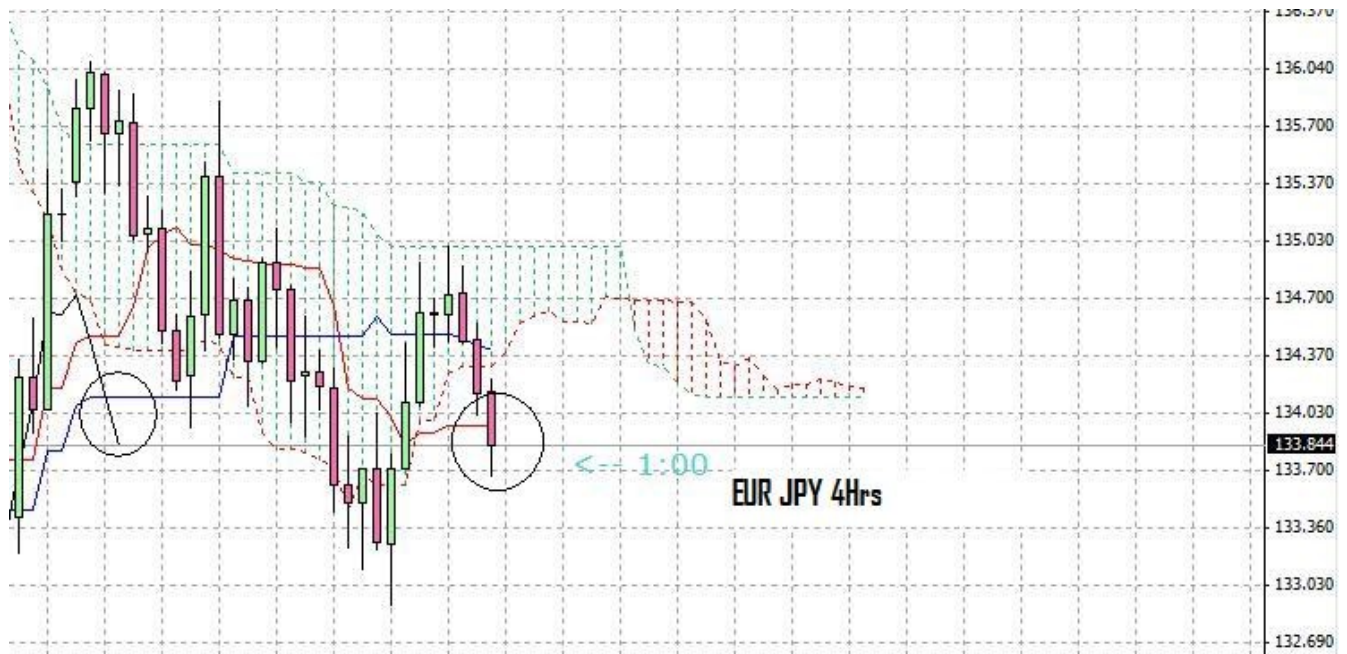
Analysis:

- 1hr Awaiting Kumo clearance
- 4hrs Pull back is over price managed to close below Tenkan again
- Daily Awaiting Kumo Clearance
- Weekly If price managed to break the Tenkan line then Pull back towards Kijun or the Kumo edge

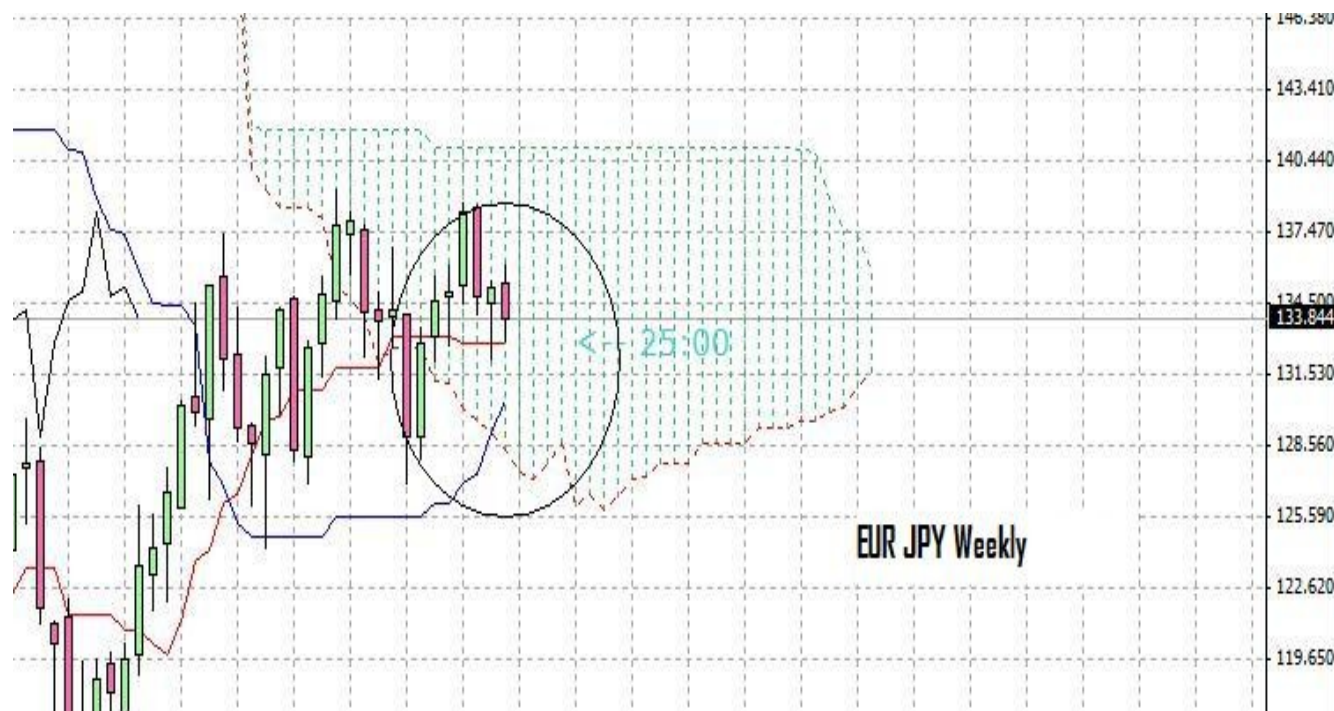
Pref positions: Will attempt short positions once 1hr Kumo is cleared



Disclaimer: all the data provided on this sheet are based upon the Ichimkou system analysis, All statements and expressions in here are my personal opinions, and not meant as investment advice or solicitation .For more information please visit <http://www.forexfactory.com/showthread.php?t=190646>



Disclaimer: all the data provided on this sheet are based upon the Ichimkou system analysis, All statements and expressions in here are my personal opinions, and not meant as investment advice or solicitation .For more information please visit <http://www.forexfactory.com/showthread.php?t=190646>



Disclaimer: all the data provided on this sheet are based upon the Ichimkou system analysis, All statements and expressions in here are my personal opinions, and not meant as investment advice or solicitation .For more information please visit <http://www.forexfactory.com/showthread.php?t=190646>