

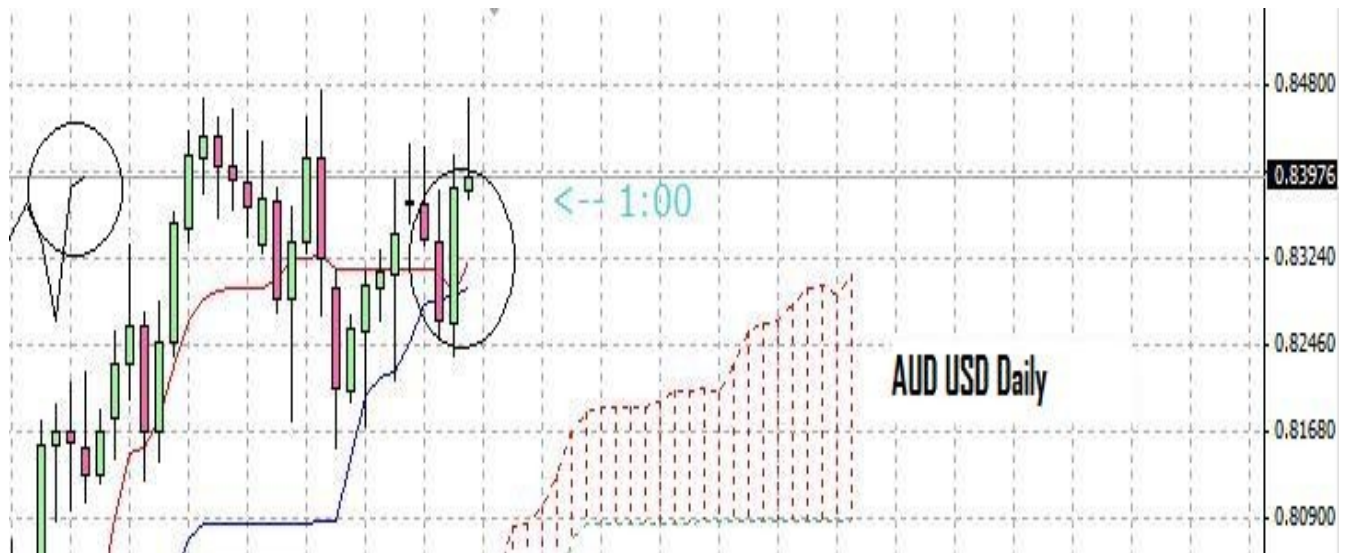
## Analysis:

- 1hr Price is in Pull back state,
- 4hrs Setup for long is on
- Daily Setup for long is on
- Weekly Price is above the cloud supporting long trades ,

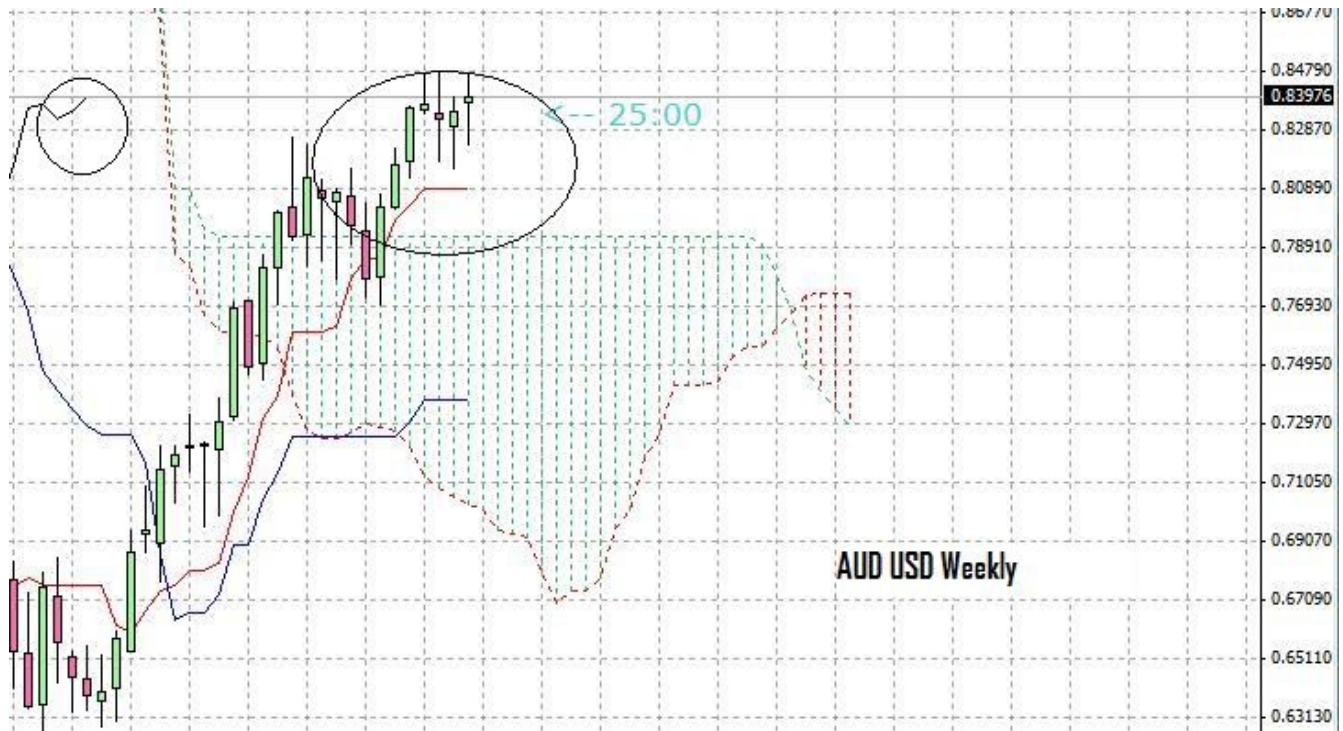
Pref positions: Will attempt long positions after pull back on 1hr is over



**Disclaimer:** all the data provided on this sheet are based upon the Ichimkou system analysis, All statements and expressions in here are my personal opinions, and not meant as investment advice or solicitation .For more information please visit <http://www.forexfactory.com/showthread.php?t=190646>



**Disclaimer:** all the data provided on this sheet are based upon the Ichimkou system analysis, All statements and expressions in here are my personal opinions, and not meant as investment advice or solicitation .For more information please visit <http://www.forexfactory.com/showthread.php?t=190646>



**Disclaimer:** all the data provided on this sheet are based upon the Ichimkou system analysis, All statements and expressions in here are my personal opinions, and not meant as investment advice or solicitation .For more information please visit <http://www.forexfactory.com/showthread.php?t=190646>