


Excel Speedometer - Dashboard Gap Table - Indicator

If you are using Excel (Speedometer), the original, you will find on the sheet Arkusz1 that there is a table as below:



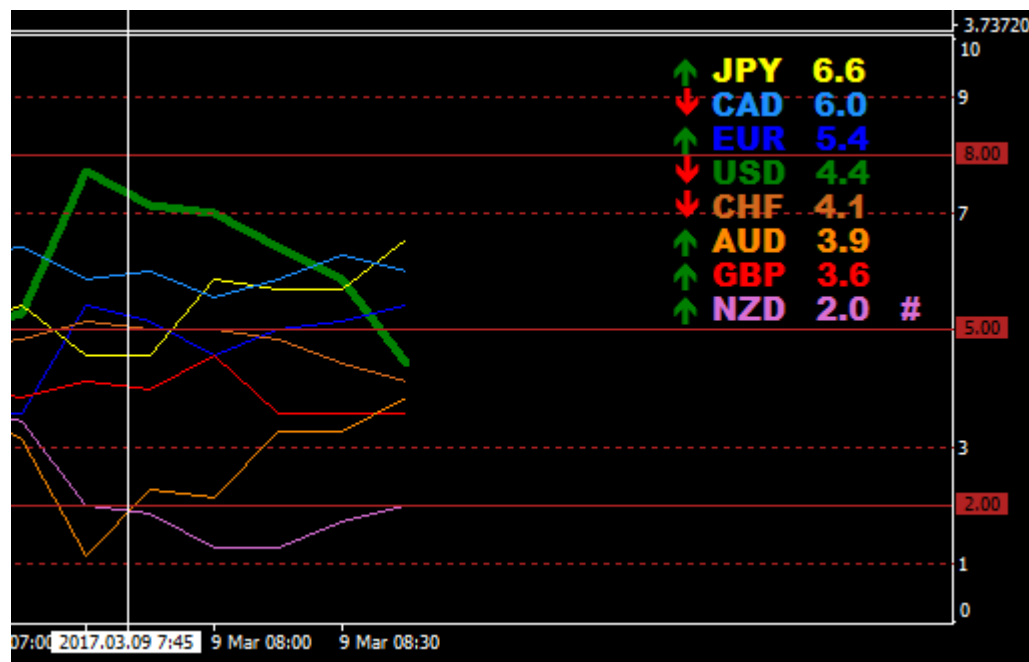
GAP	USD	JPY	GBP	EUR	AUD	NZD	CAD	CHF
D1	7.1	5.6	4.0	5.1	2.4	0.7	6.0	5.0
H4	7.1	5.6	4.0	5.1	2.4	0.7	6.0	5.0
H1	2.3	0.3	-1.0	2.1	-4.1	-5.3	3.6	2.1
M30	0.9	2.0	-0.1	1.3	-2.4	-3.0	1.6	-0.1
M15	0.9	2.0	-0.1	1.3	-2.4	-3.0	1.6	-0.1

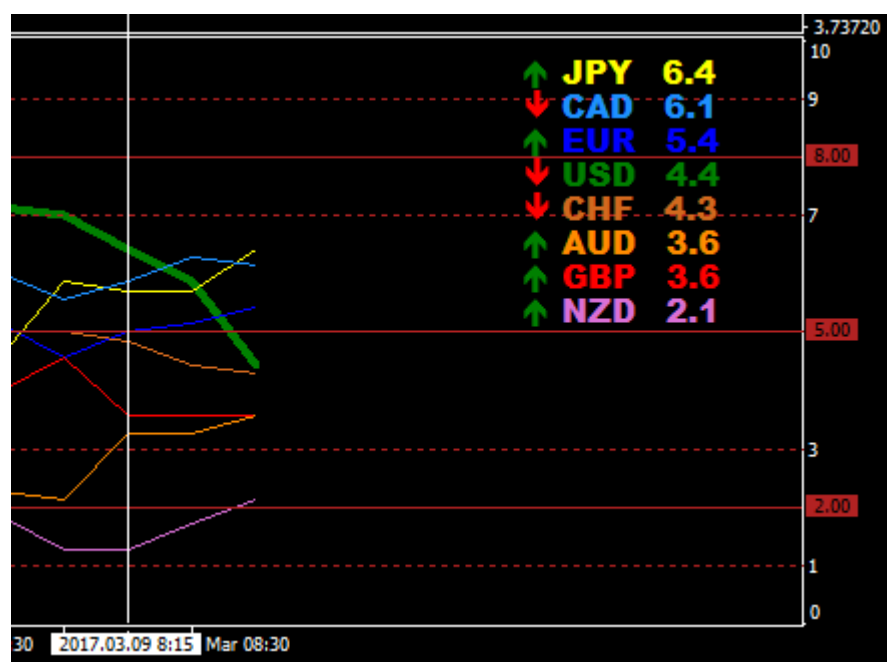
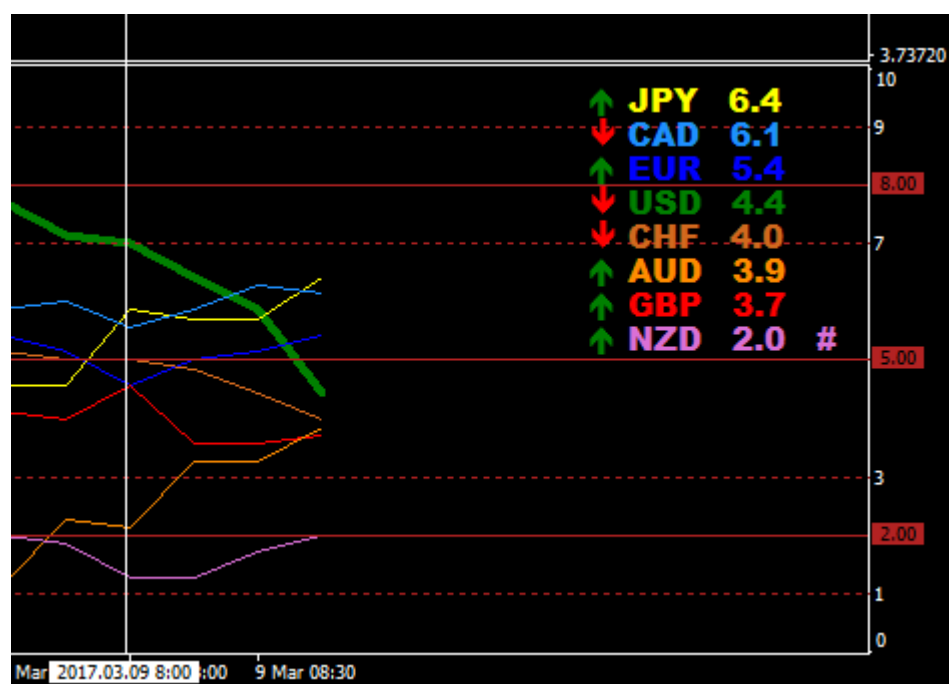
If you look at the code that makes up the calculations for H4 & D1 Gap you will find blank cells. The calculation shown in these fields in the Chart is the Current data **NOT** H4 & D1 variances to Current.

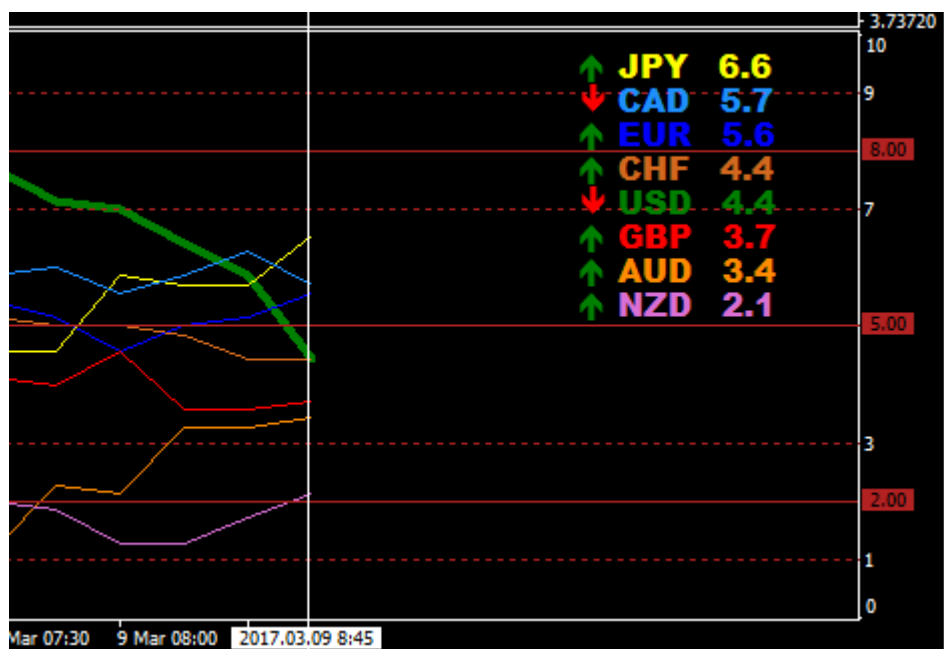
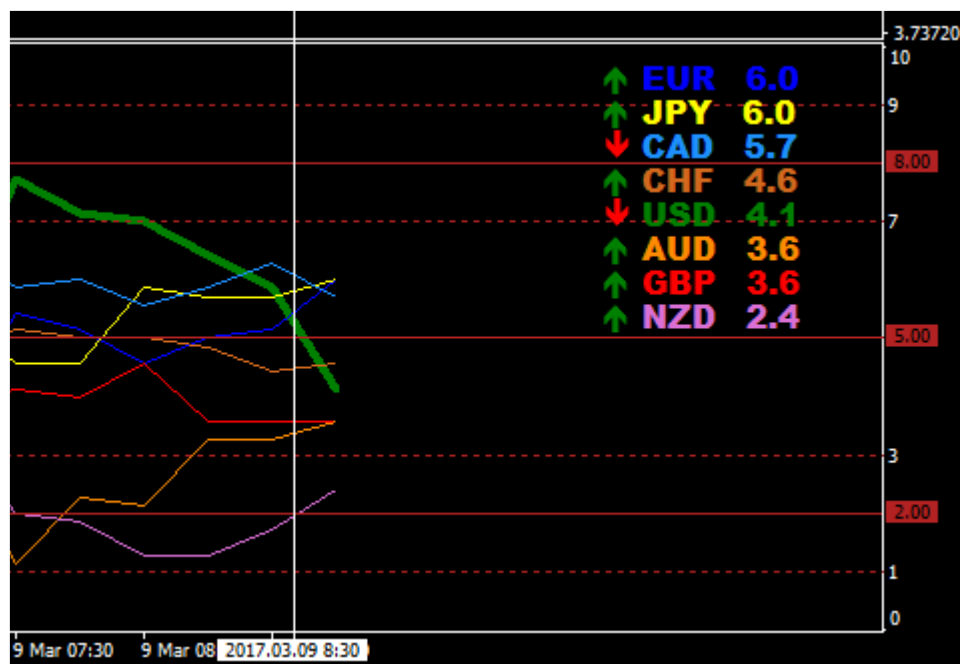
If you are test trading using the highly successful [Forexpinbar](#) method and watching this table looking for the Gap, e.g. shown "all blue" for 1 hour and then making sure that same currency is reflected in the BUY or SELL left hand side of the dashboard then I believe that you don't need to watch this continually.

Use a Strength Line Graph and check periodically that the currency is at the bottom or the top, the period of this can be seen in the time of your MT4 terminal.

See today's example below for London Open: (you can see the currency NZD in the following has been lowest for 1 hour (a requirement to trade) see timeline at bottom in 15 min increments







Then dashboard spread sheet SELL for NZD

WAIT	WAIT	-4	-2	GBPUSD
SELL	BUY	-5	5	NZDCAD
SELL	WAIT	-5	2	NZDCHF
SELL	WAIT	-5	2	NZDJPY
SELL	WAIT	-5	-2	NZDUSD
WAIT	BUY	-2	5	USDCAD

And the Gap Table, NZD all RED

GAP	USD	JPY	GBP	EUR	AUD	NZD	CAD	CHF
D1	5.0	6.1	2.1	5.9	5.0	1.6	6.1	4.1
H4	5.0	6.1	2.1	5.9	5.0	1.6	6.1	4.1
H1	0.1	0.9	-2.9	2.9	-1.6	-4.4	3.7	1.3
M30	-1.3	2.6	-2.0	2.0	0.1	-2.1	1.7	-1.0
M15	-1.3	2.6	-2.0	2.0	0.1	-2.1	1.7	-1.0

So there is no need to watch the Gap Table continually, simply watch the indicator periodically and see if it moves uninterrupted at the bottom or top.

Now we will see what happen closed to London and what the outcome will be.