

TradeMan Editor

This program is specially created for adding your levels in an easy way to the TradeMan HappyMe EA.

Many thanks to Bestof27, who created this nice application!

Installation

The ZIP-file exists out of 2 files:

- TradeManEditor.exe
- TradeManEditor.ini

- 1) Extract the zip-file towards a folder
 - 2) Open de TradeManEditor.ini file
- You see here 3 parameters:

Parameter 1:

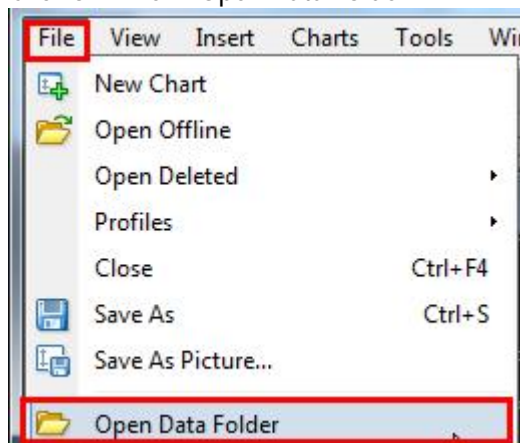
PathToFiles=<%location of your long.txt file and short.txt file%>\

For example:

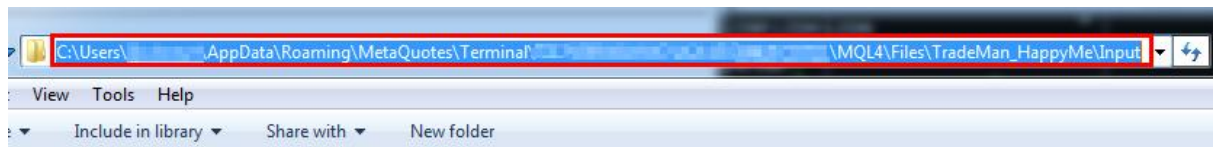
PathToFiles=C:\Users\PeterPan\AppData\Roaming\MetaQuotes\Terminal\7057430B10149A74A2145C8462FCD701\MQL4\Files\TradeMan_HappyMe\Input\
(The last \ must be there!)

Follow below steps to find your long.txt and short.txt.

- Open the MT4
- Click on "File -> Open Data Folder"



- The Explorer opens => Click on MQL4 -> Files -> TradeMan_HappyMe -> Input ->
- Now you see your Long.txt and Short.txt
- Copy the location of these files (as seen below)



- Copy this location in behind the: PathToFiles=..... and finish this line with a “\” as in the example!

Parameter 2

AsianEU_StartH=<%StartTime of your Asian + EU session%>

Eg: AsianEU_StartH=00:00:00

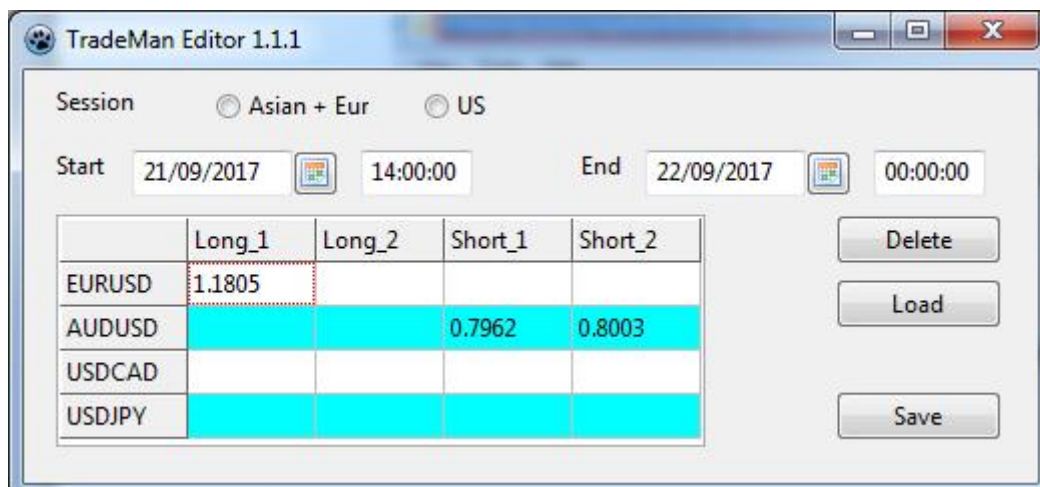
Parameter 3

US_StartH=<%StartTime of your Asian + EU session%>

Eg: US_StartH=15:00:00

How to use

If you want to add new levels to the EA just start the TradeManEditor.exe



If you want to add levels for Asian+Eur click the radio button (eventually you can change the time and date)

And now you just fill in the desired levels!

Click Save and your levels will be save (be carefull!: Old levels will be removed from the txt-files)

That's it!! :D

If you want to load the new levels in your EA then just click the INIT-button in the EA!

If you want to check the levels click the long.txt or short.txt buttons in the EA!

Disclaimer:

Use this program at your own risks

I will not be liable for any errors, any losses, injuries, or damages arising from its use.
