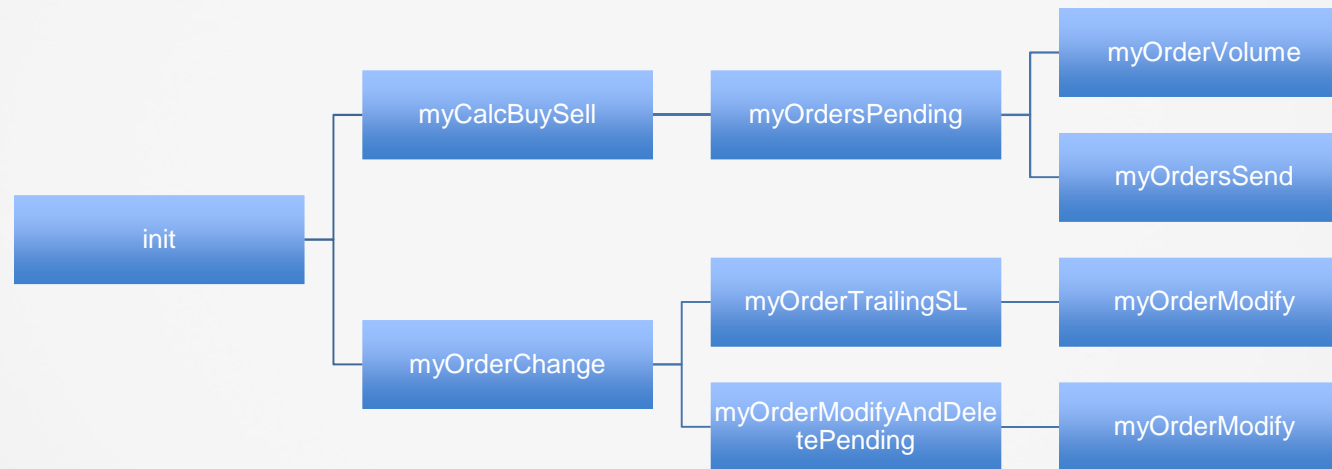


## Methods hierarchy



## Bengal Dream – Settings I

Use lots or Risk for Trading; if Lots=0 the value of Risk will be used

Deletes the pending orders

Set Slippage for trading

Sets the maximal spread

Sets the ECN Mode

1/2	Lots	0.0
1/2	Risk	2.0
✓	DeletePending	true
123	Slippage	3
123	MaxSpread	20
✓	ECN mode	true

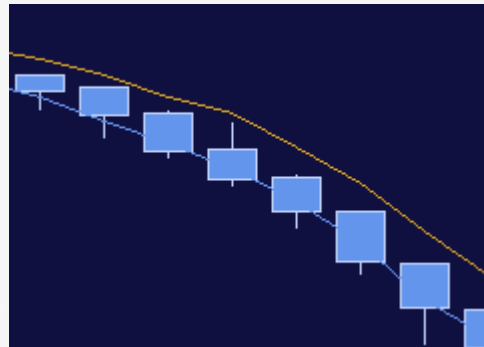
## Bengal Dream – Settings II

Period of the MA High-Low Channel

Method of the MA

Candle or shift of the calculation of the MA

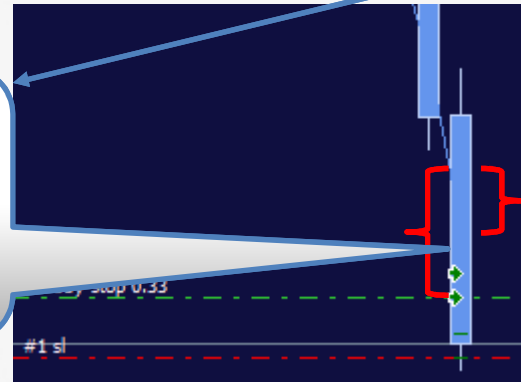
123	Moving average period	3
123	Moving average method	Linear weighted
123	Moving average used candle before actual	0



## Bengal Dream – Settings III

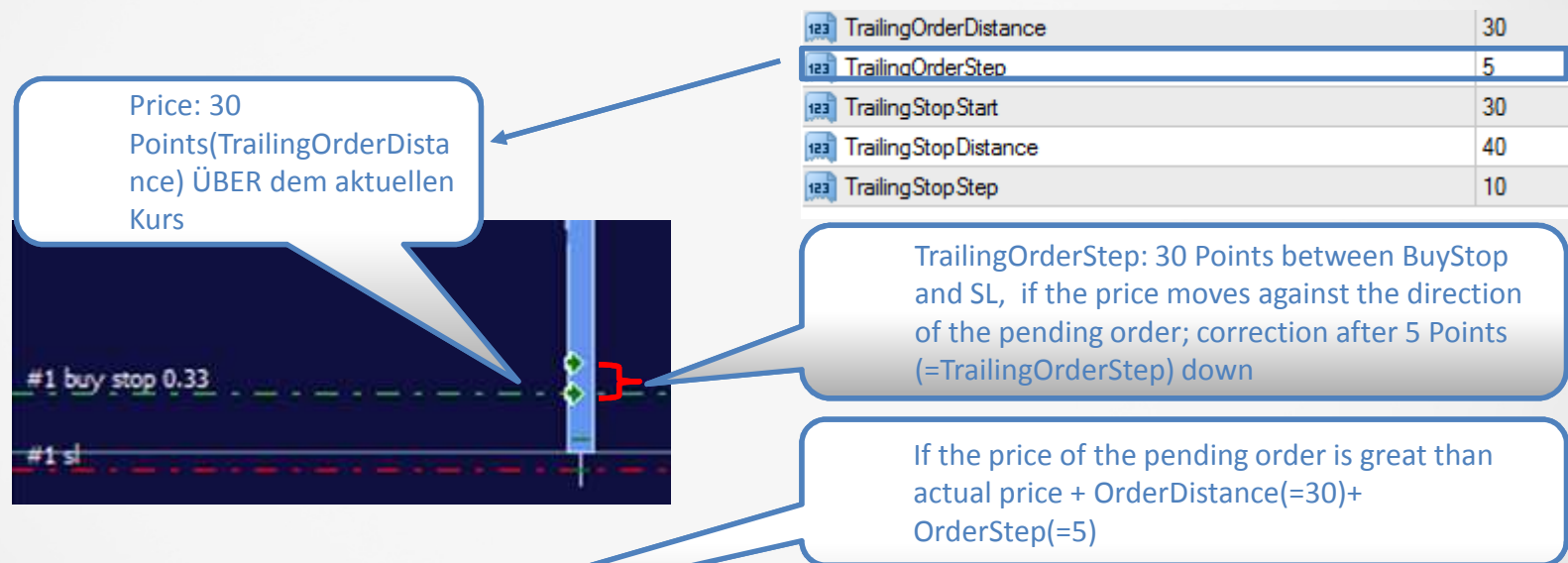
123	Distance of price breakout of MA High-Low Kanal	60
123	TrailingOrderDistance	30

Distance of price breakout: Number of Points when a pending reverse BUY/SELL order is placed in channel direction: 60 Points!



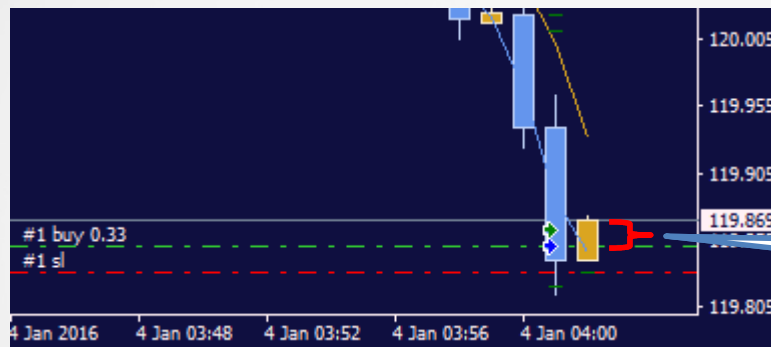
TrailingOrderDistance: Distance from the Channel where the BuyStop Order is placed: 30 Points!

## Bengal Dream– Settings V



```
if (OrderOpenPrice() > Ask + TrailingOrderDistance * Point + TrailingOrderStep * Point
```

## Bengal Dream– Settings VI



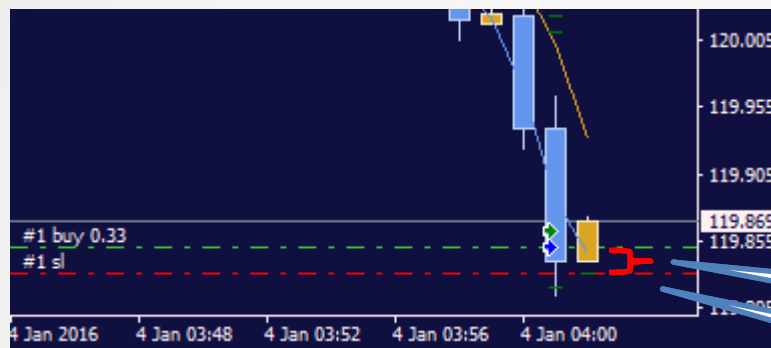
123	TrailingStopStart	30
123	TrailingStopDistance	40
123	TrailingStopStep	10

TrailingsStopStart: if the price is over 30 Points(= TrailingsStopStart), start with Trailing

If the price of the pending order is great than actual price + OrderDistance(=30)+ OrderStep(=5)

```
if (OrderType() == OP_BUY && OrderOpenPrice() < Bid + TrailingStopStart * Point)
```

## Bengal Dream– Settings VII



123	TrailingStopStart	30
123	TrailingStopDistance	40
123	TrailingStopStep	10

TrailingStopDistance: The Distance to the SL

TrailingStopStep: The step in trailing the SL in number of points