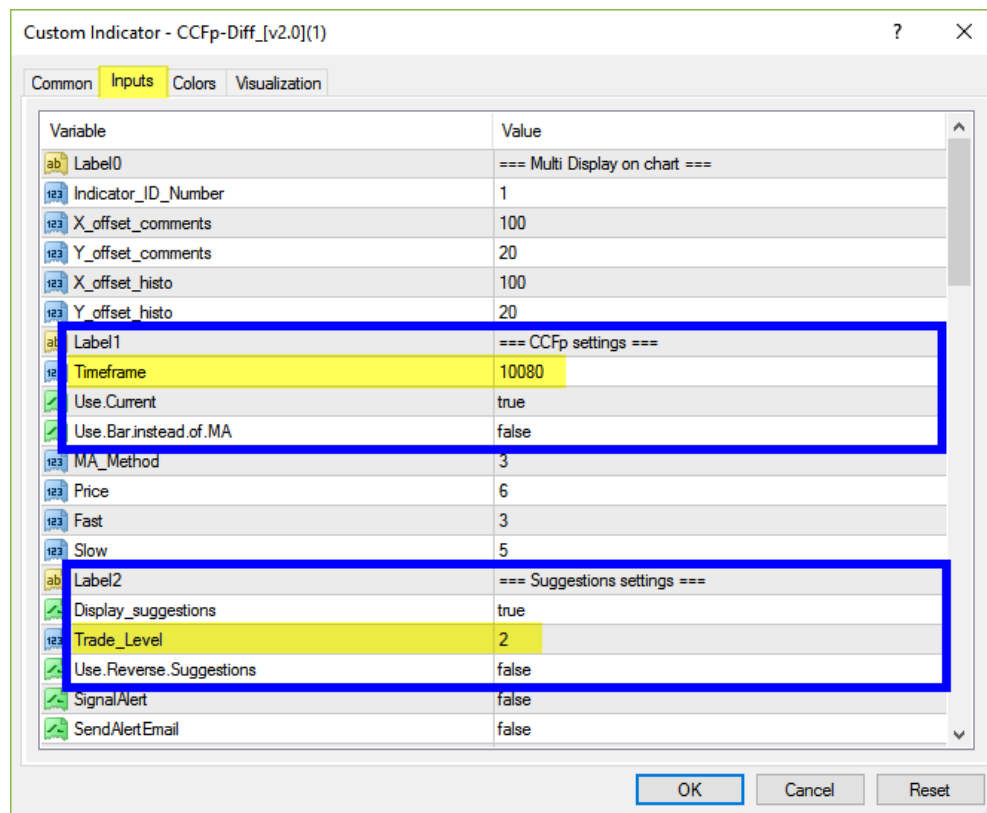


# Quick Start Guide – May 7, 2017

- 1 Install Indicator CCFp-Diff [v2.0](1).ex4 to Indicator Folder
- 2 Install EA xm7\_Ccfp\_Wkly\_TradeMonitor\_v37.7.2.ex4 to Experts folder (or latest update version)
- 3 Restart Metatrader
- 4 Open 1 minute chart of EURUSD
- 5 Apply indicator CCFp-Diff [v2.0](1).ex4
  - 5.1 Timeframe – 10080
  - 5.2 Use Current – True
  - 5.3 Trade Level – 2



Suggestion for 10080mins TF  
Trade Level set to 2

**Bar end: 00:00:55**

✖	USDJPY	--->	Buy
✖	AUDUSD	--->	Sell
✖	USDCAD	--->	Buy
✖	EURAUD	--->	Buy
✖	EURJPY	--->	Buy
✖	GBPJPY	--->	Buy
✖	AUDCHF	--->	Sell
✖	CADCHF	--->	Sell
✖	CHFJPY	--->	Buy
✖	EURCAD	--->	Buy
✖	EURNZD	--->	Buy
✖	NZDCHF	--->	Sell
✖	NZDUSD	--->	Sell
✖	GBPAUD	--->	Buy
✖	GBPCAD	--->	Buy
✖	GBPNZD	--->	Buy

Refreshing process done !

### W1 current

[illegible]

CCFp-Diff - FerruFx - <http://www.ervent.net>

## 6 Apply EA xm7\_Ccfp\_Wkly\_TradeMonitor\_v37.7.2.ex4

Expert - xm7\_Ccfp\_Wkly\_TradeMonitor\_v37.7.2

About Common **Inputs**

Variable	Value
Basket Magic Number	1
Lot Size	0.01
Trading Mode	Weekly
=== Weekly Setting for TradeMode=Weekly ===	=====
Day of Week to Open Basket	Monday
GMT Open Hour("HH:mm")	07:00
If Basket still open, Day to Close it	Friday
GMT Friday Close Hour ("HH:mm")	19:50
=== Daily Settings for TradeMode=Daily ===	=====
GMT Open Hour("HH:mm")	00:00
GMT Close Basket each day at this Hour("HH:mm")	23:50
For Daily: GMT Friday Close Hour ("HH:mm")	19:50
MTF_Range_Hours	=====
Use_GMT_OpenRangeHours	false
GMT MTF OpenRangeHours("HH:mm-HH:mm")	00:00-01:00
SetProfitTargetsTo (Individual_Trades uses only pips)	Basket
Set_Basket_SL_TP_Targets_in	Pips
Basket_Take_Profit (pips or %)	500.0
Basket_Stop_Profit (pips or %)	200.0
Individual_Trades_Take_Profit (pips)	0.0
IndividualTrades_Stop_Profit (pips)	0.0
BeginLockingProfit (in pips only)	0.0
LockPercentLevel	50.0
SetLockEvery (pips) LockStep	100.0
Basket_Manual_Profit_Lock (pips)	0.0
MaxTradesAllowed	0
LogToFile_BasketPipCount	false
SetPipLevelForAlerts ( can be +/-pips)	0.0
PopUp	false
Send_Notification	false
UseVirtualBasket	false
VirtualBasketTriggerLevel(+/-pip to open real basket)	0.0
DisableBasketCloseWarnings	false
TradeComment	CCfp_Weekly_Basket
IgnoreAllCloseHours	false
PrintDebugInfo	false

Load Save

OK Cancel Reset

6.1 Trading Mode – Weekly

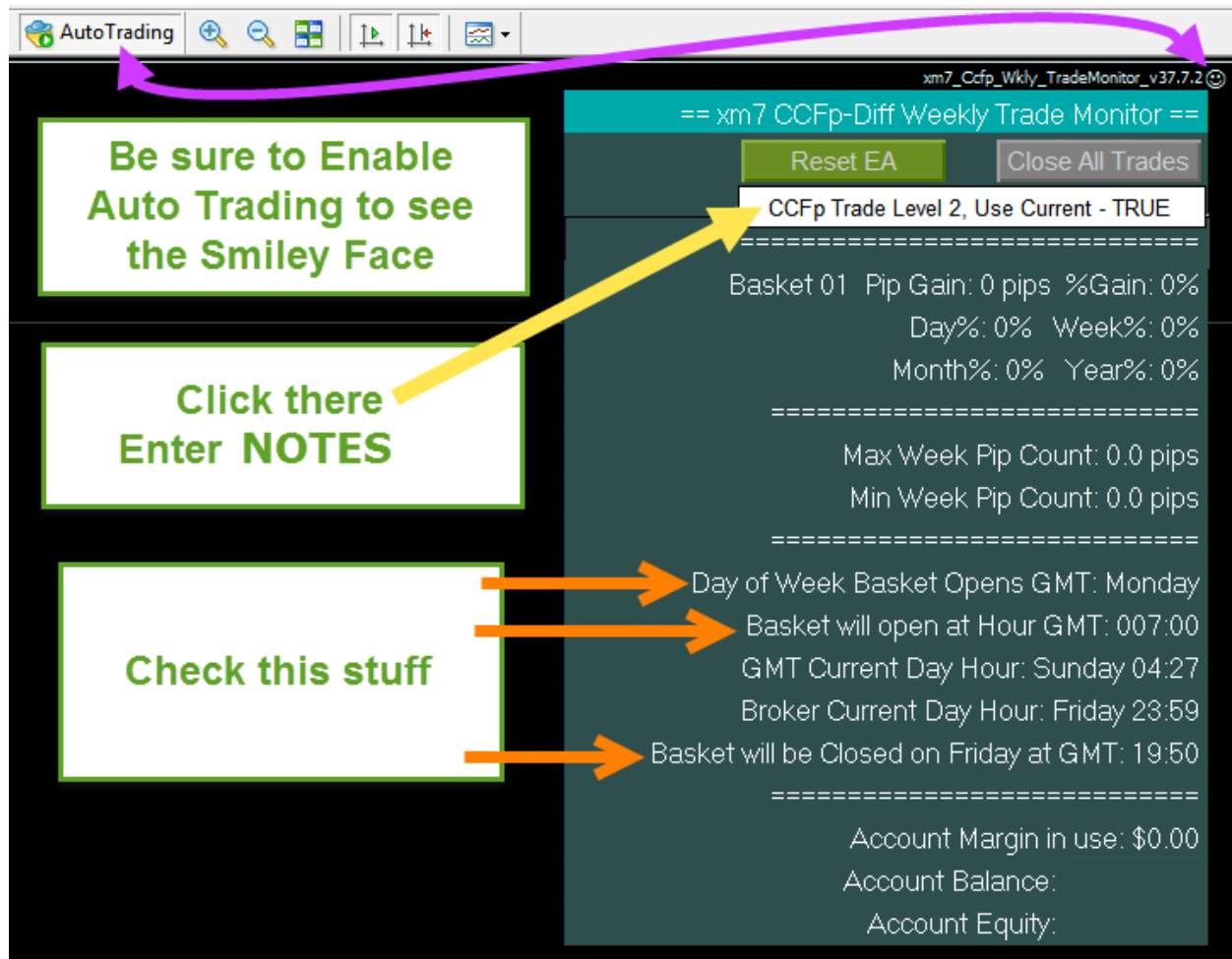
6.2 GMT Open – 07:00

6.3 GMT Friday Close – 19:50

6.4 Basket Take Profit Pips - 500

6.5 Basket Stop Loss Pips – 200

The EA will open a Basket of trades from the Trade suggestions of the CCFp-Diff indicator at London open.



This guide assume that the reader has basic knowledge of:

Forex trading

Metatrader 4

Installing and using indicators and EA's

Understanding time, time zones, and daylight savings

Please join us at - [CCFP weekly signals \(set and forget basket trading\)](#)