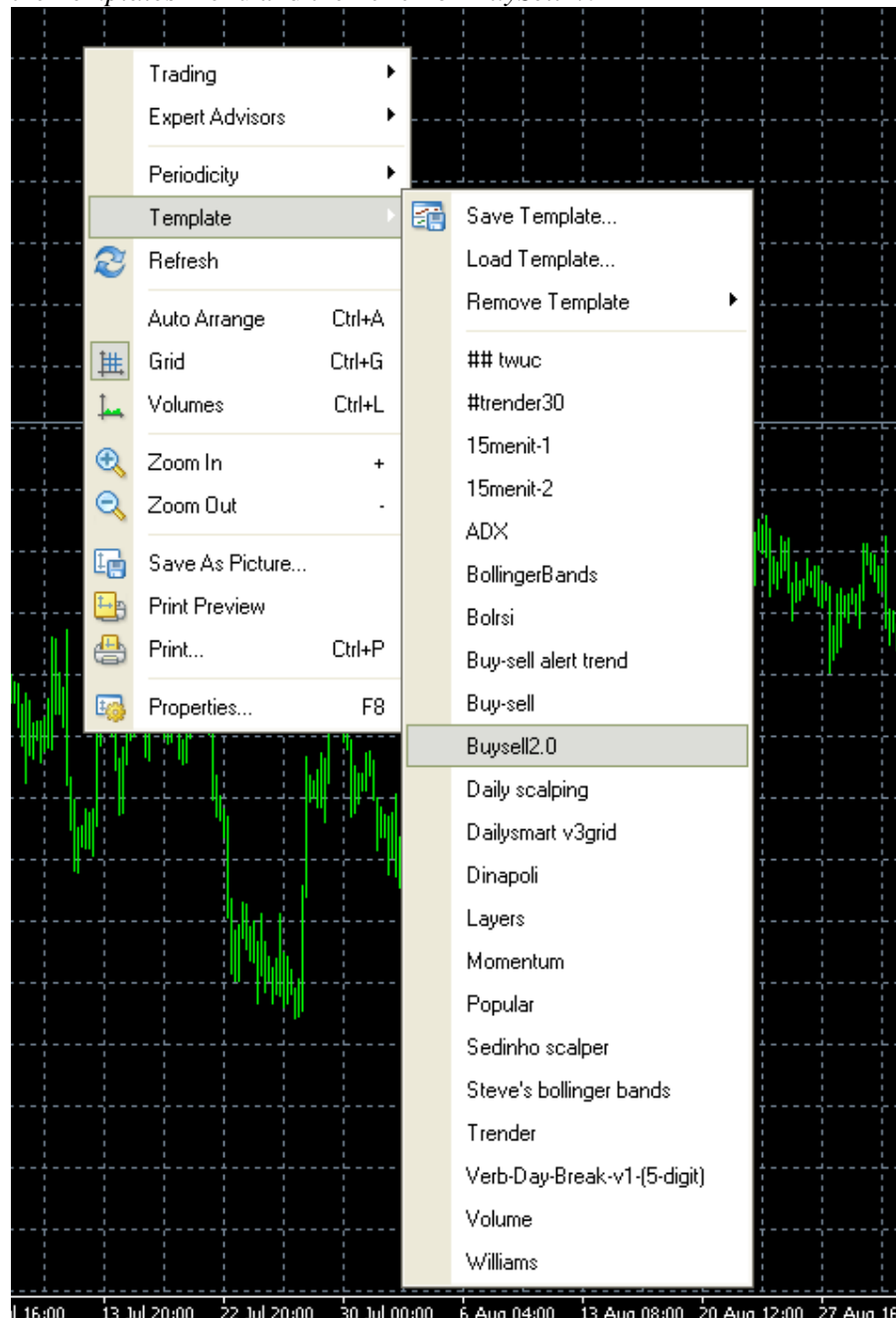


BuySell2.0 Indicator Installation Guide

1. Copy all of the ex4 files to your MT4 indicators folder
eg. c:\Program Files\[MT4 Folder]\experts\indicators\
2. Copy buysell2.0.tpl to your MT4 templates folder
eg. c:\Program Files\[MT4 Folder]\templates\
3. Restart your MT4
4. Open any currency pair in H4 timeframe, right click on your mouse, click on the *Templates* menu and then click on *BuySell2.0*



5. Now your chart should look like this:



6. You enter long only when you see blue arrow above dotted blue line.
7. You enter short only when you see red arrow below dotted red line.
8. SL is 1 pip above/below red/blue dotted line
9. Exit trade when the reverse signal is accured.