

## User manual - indicator “Driver-Navigator”

**Driver Trading Team**

Email : drivertrading3.0@gmail.com





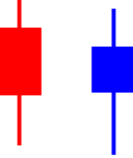
### INTRODUCTION

The following guide has the aim to list the indicator functions ‘Driver-Navigator’. It bases its analysis on the representations of the Heiken-Ashi candles.

These candles provide a clean and descriptive interpretation of the market trends. Unlike the Japanese’s candles, the Heiken-Ashi do not show the real opening, closing, highest and lowest price. The values of each candle are calculated based on the dominant forces in the market. For example: if the bears (sellers) clearly are the dominants, the candle Heiken-Ashi will be bearish (red), even though the price bar closes with a price higher than the opening one.

The Heiken-Ashi candles are the perfect instrument for the trader as they prefer to follow the underlying trend, in addition to a better visual interpretation.

### General rules of reading of Heiken-Ashi candles.

	The sellers are dominants, strong tendency bearish
	The buyers are dominants, strong tendency bullish
	The tendency is weaker... pay attention

The changing color of the Heiken-Ashi candle - defines the changing of the tendency.

On a relatively ‘linear’ vision, a trailing stop may be placed on the lowest price of the previous Heiken-Ashi candle in case of uptrend. In case of downtrend the trailing stop may be placed on the highest price of the previous candle.

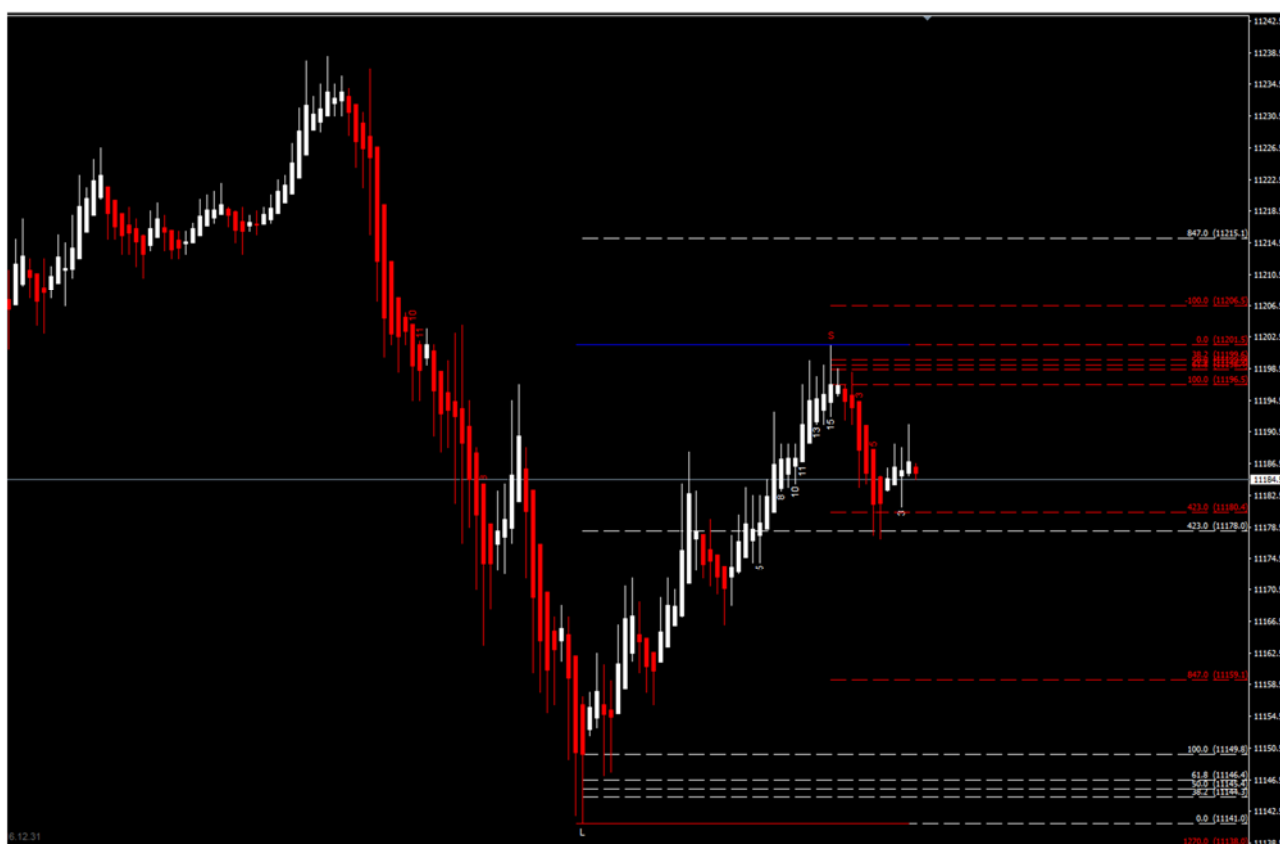
The fact that the speculators love the ‘risk’ is mainly attributable to Nicolas Darvas, Hungarian dancer and pioneer of charts. Heiken Ashi is translated as ‘balance on one leg’. But before you do just a simple click on your Heiken-Ashi candles chart, you should be aware of what the displayed candles symbolize.

## SYNTHETIC DESCRIPTION OF DRIVER-NAVIGATOR

In this case, the indicator bases its analysis exactly on the Heiken-Ashi bars with the aim of proposing trade operations in countertrend i.e. acting 'Long' on the lowest price and 'Short' on the highest price based on the period taken in consideration. It is best to remember that the "Driver-Navigator" is **NOT** a "Trading System", therefore must be accompanied with other instruments which every trader uses as normally, acts to confirm the action to be taken.

During the long and/or short cycles, the intern algorithm qualifies the single bars numbering the important ones (called 'ordinary') to lead to identify the potential bar for a trend inversion. Another essential condition for the qualification is to score a highest / lowest price of the period as shown in the picture below.

Once both terms are given, the indicator places the letter 'S' in case of Short on the main bar, or, in case the of a Long a letter 'L' will be under the respective bar.



The letter appears on the screen even before they occur the actual trend changing conditions, in fact it often appears before a reversal bar.

This letter shall be construed as an 'early warning' thus giving the trader time to observe the other instruments of its use and be prepared for any possible operation on the market.

At the end of the first reversal bar, 'Navigator' will automatically place the Fibonacci with the their target, officially affirming definitely the beginning of the operation.

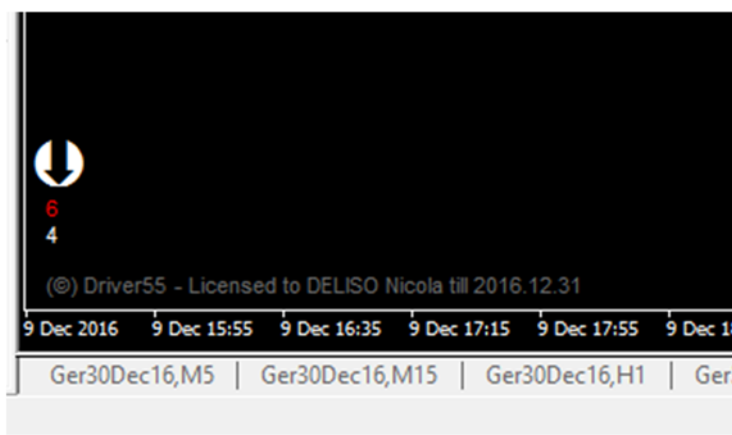
The Fibonacci's of the last two trades always remain shown until a new signal (red Fibonacci for short / white Fibonacci for long).

At the bottom of the chart, on the right inside there is a legend with the aim to indicate the number of bars counted based on the last long and short cycle. It indicates, also through a dot, which can change colour based on what type of bar is drawing, the position that the algorithm has got on the market, placing an arrow downward in case of Short and upturn in case of Long. See the below picture.

“Driver-Navigator” has the advantage of lifting the Trader from the immense computational work, counting of bars, placement of Fibonacci, etc., allowing to remain concentrated “on the piece” and most of all not to lose the timing for potential trade.

Driver-Navigator” instantly adjusts itself to any change of Timeframe.

“Driver-Navigator” is completely configurable according to your needs. The following page, there is a list with all the variable parameters, which they have already got the default values.



## HELPFUL TIPS

Based on our experience and observation of the Market, we believe it is helpful to list below some practical considerations:

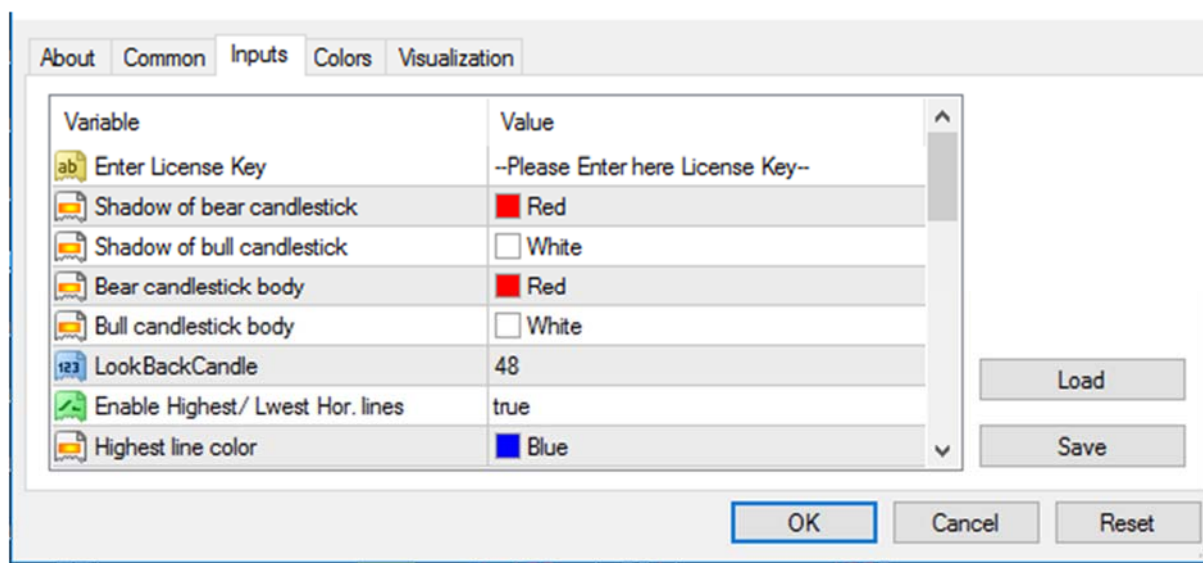
- **Rate the first target (423%) the primary target.** Alternatively, consider the liquidation of 50% of the position to try with the remain part to reach the second target. This depends, of course, on the attitude to the risk of each individual trader.
- **Do not chase the prices.** Sometimes, especially on low Timeframe, the entry price may be quite close to the first Target such as to make the operation inconvenient. From our point of view, we notice quite often, even when the market reaches the first target, it goes back to test the area (**61%-38%**). If the circumstances are right, an 'Limit' order would allow to reenter Market by having a relatively narrow stop.
- **Use 2 Timeframe** to searching 'confluences' of levels.

## “Driver-Navigator” PARAMETERS

“Driver-Navigator” is completely configurable based on your needs. On the list below, they are listed all the variable parameters, which they have already got the default values.

At the delivery, will be attached a license key which must be entered on the appropriate line shown below.

**\*\*\* Please bear in mind that license must be entered before you confirm with the “OK” button \*\*\***



The screenshot shows a software configuration window titled "Driver-Navigator" with a tabbed interface. The "Colors" tab is selected, displaying a list of variables and their current values. The variables include a license key entry, candlestick shadow and body colors, a lookback candle count, and horizontal line settings. To the right of the list are "Load", "Save", "OK", "Cancel", and "Reset" buttons.

Variable	Value
Enter License Key	--Please Enter here License Key--
Shadow of bear candlestick	<input checked="" type="checkbox"/> Red
Shadow of bull candlestick	<input type="checkbox"/> White
Bear candlestick body	<input checked="" type="checkbox"/> Red
Bull candlestick body	<input type="checkbox"/> White
LookBackCandle	48
Enable Highest/ Lwest Hor. lines	true
Highest line color	<input checked="" type="checkbox"/> Blue

# Parameters List "Driver-Navigator"

DriverTrading3.0Team

Input	Descrizione
Enter License Key	Immettere qui la chiave della licenza
Shadow of Bear Candlestick	Colore shadow candela ribassista
Shadow of Bull Candlestick	Colore shadow candela rialzista
Bear Candlestick Body	Colore corpo candela ribassista
Bull Candlestick Body	Colore corpo candela rialzista
LookBackCandles	Nr. di candles used to calculate High/Low
Enable Highest/Lowest Hor. Lines	Enable/Disable visualisation of Line High/Low
Highest Line Color	High line color
HLine DN Color	Low line color
Enable Fibo	Enable/Disable visualisation Fibonacci
___PriceDesc___	-----
EnableKeyBarNumbers	Enable/Disable Vis. KeyBar Number
KeyBarFont	Font for KeyBar Number
KeyBarFontSize	Character Size for KeyBar Number
KeyBarTextAngle	Angle of visualisation KeyBar Number
KeyBarNumberOffset	Offset from price of KeyBar Number
___PriceDesc2___	-----
Enable Legend	Enable/Disable Legend
LegendRedBarColor	Color of Bar counter for Red candles
LegendWhiteBarColor	Color of Bar Counter for White Candles
LegendFont	Legend Font
LegendFonSize	Character Size for Legend
LegendXoffset	Pos. X for Legend
LegendYoffset	Pos. for Legend
LegendCorner	Chart Angle (1-2-3-4-)
DislayCandles	Enable/Disable Candlestick
DisplayLicense	Hide License

