

GBP/USD Daily 1.9948 1.9922 1.9901 1.9930

Retracement High 2.0587
Retracement Long 2.0544
Retracement Pivot 2.0531
Retracement Short 2.0510
Retracement Low 2.0476
Retracement T1 2.0433
Retracement T2 2.0407

Down Trend T2 2.0348
Down Trend T1 2.0317

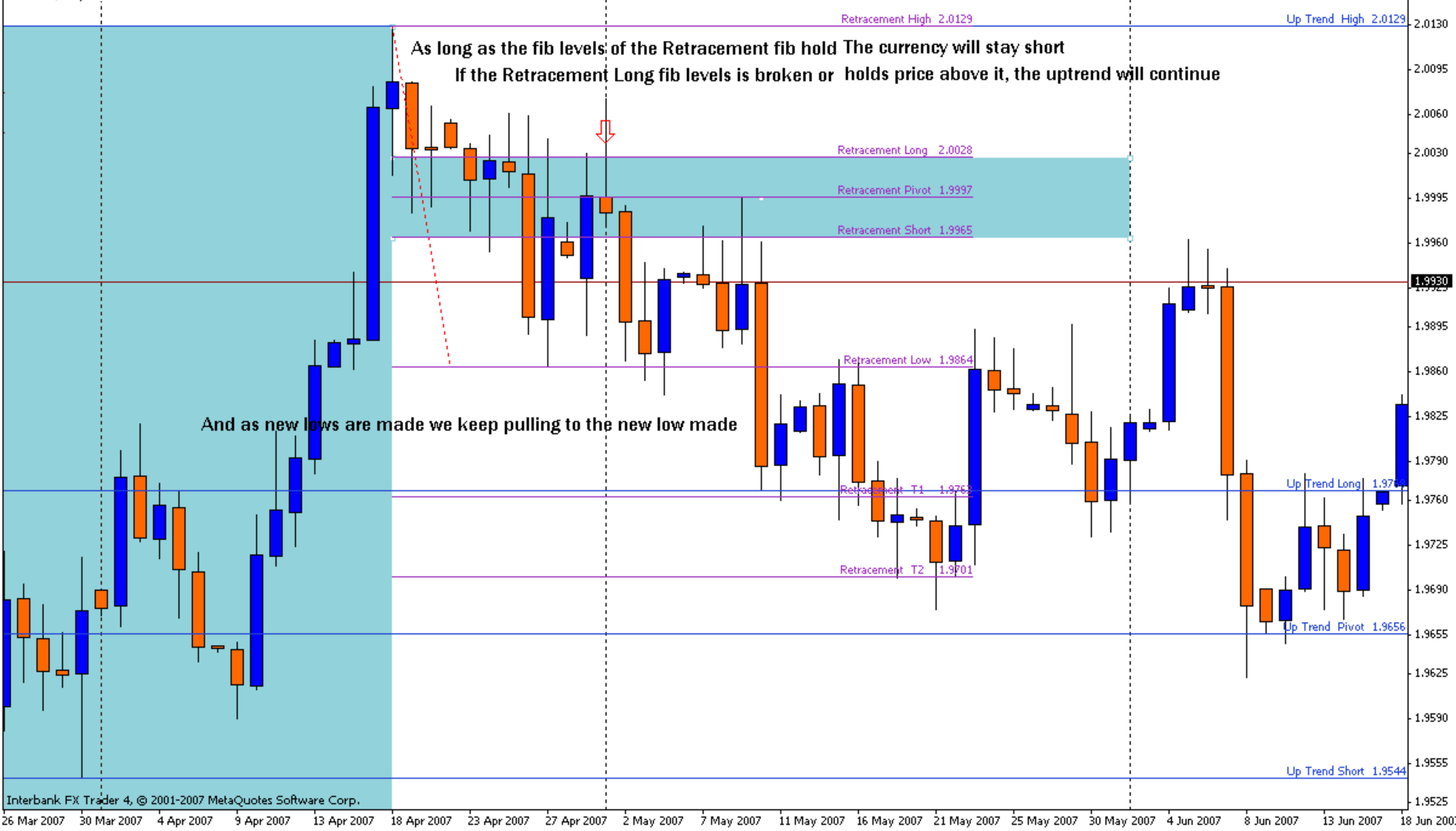
Down Trend High 2.0265

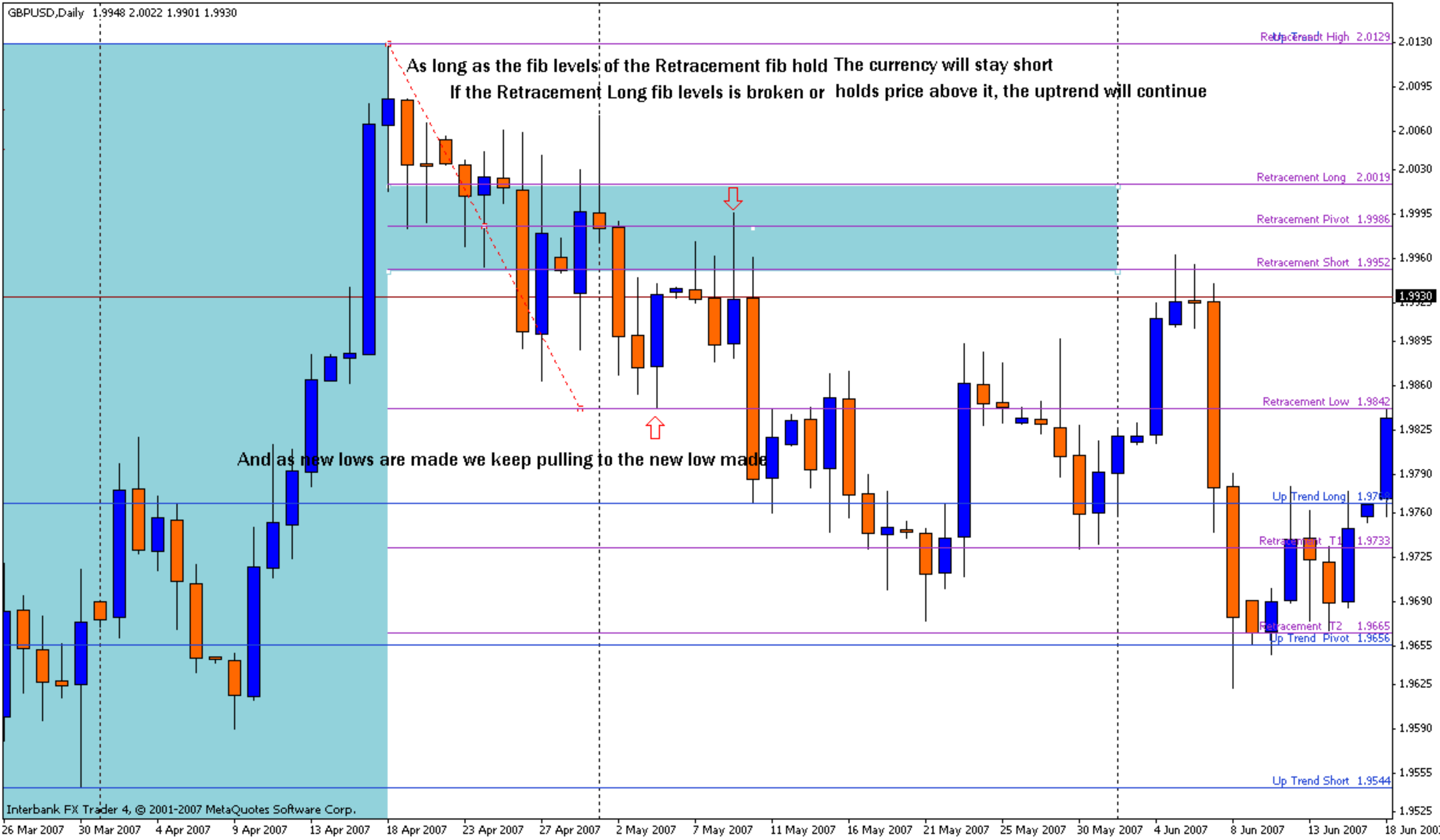
Down Trend Long 2.0213
Down Trend Pivot 2.0197
Down Trend Short 2.0181

Down Trend Low 2.0129

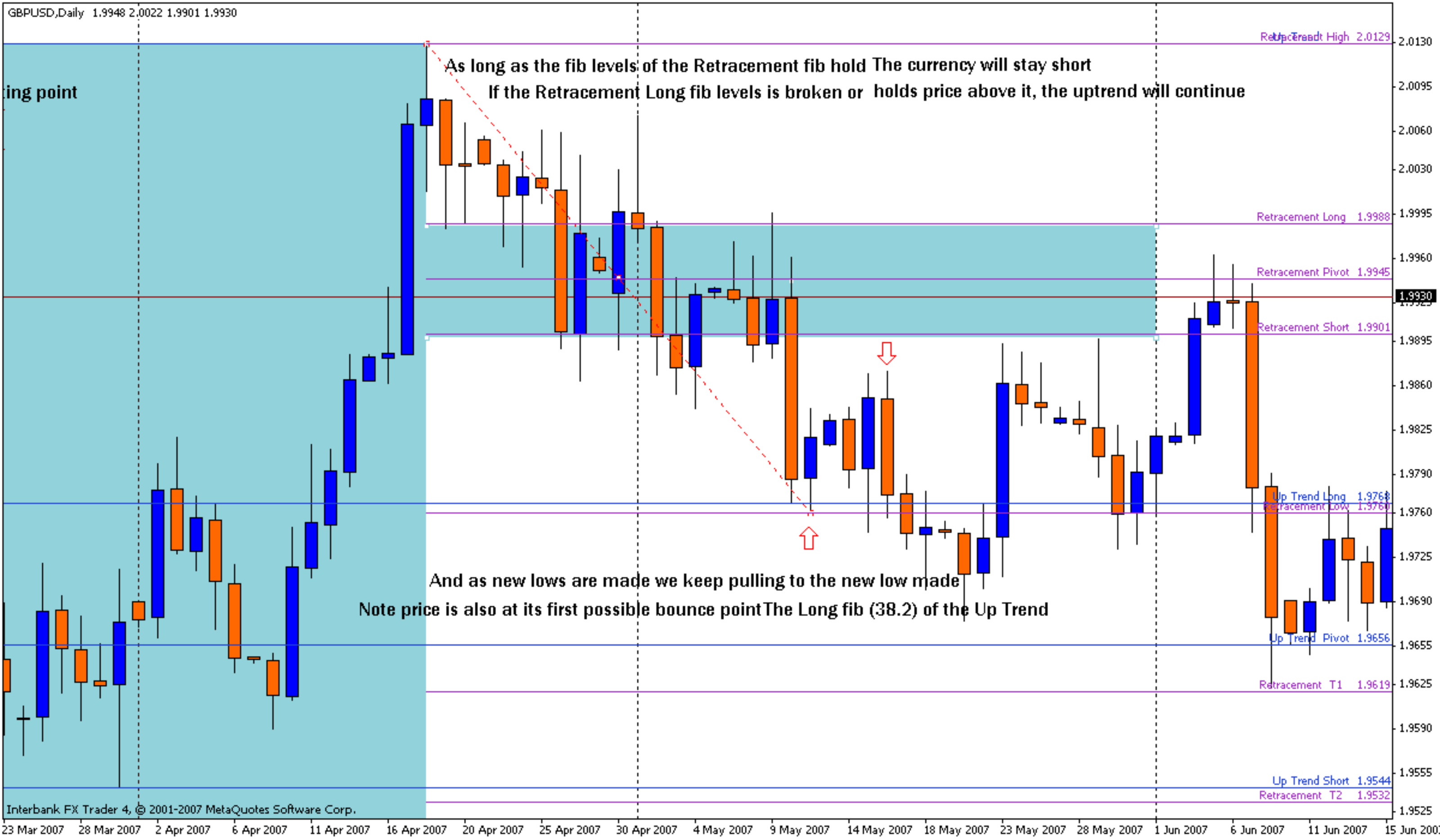
Down Trend T1 2.0078
Down Trend T2 2.0046







ing point



ing point

As long as the fib levels of the Retracement fib hold The currency will stay short
If the Retracement Long fib levels is broken or holds price above it, the uptrend will continue

Retracement High 2.0129

Retracement Long 1.9956

Retracement Pivot 1.9902

Retracement Short 1.9848

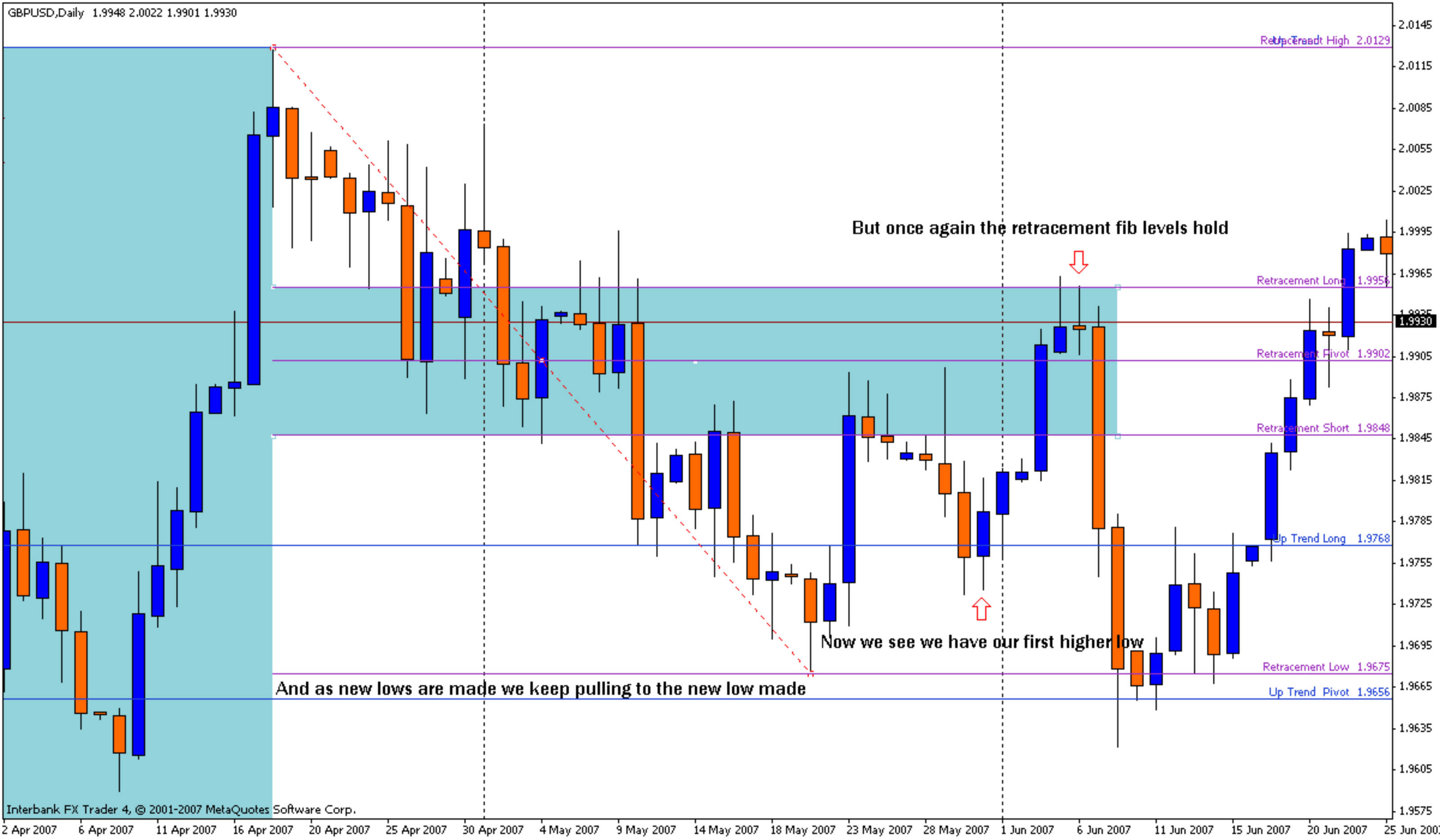
Up Trend Long 1.9768

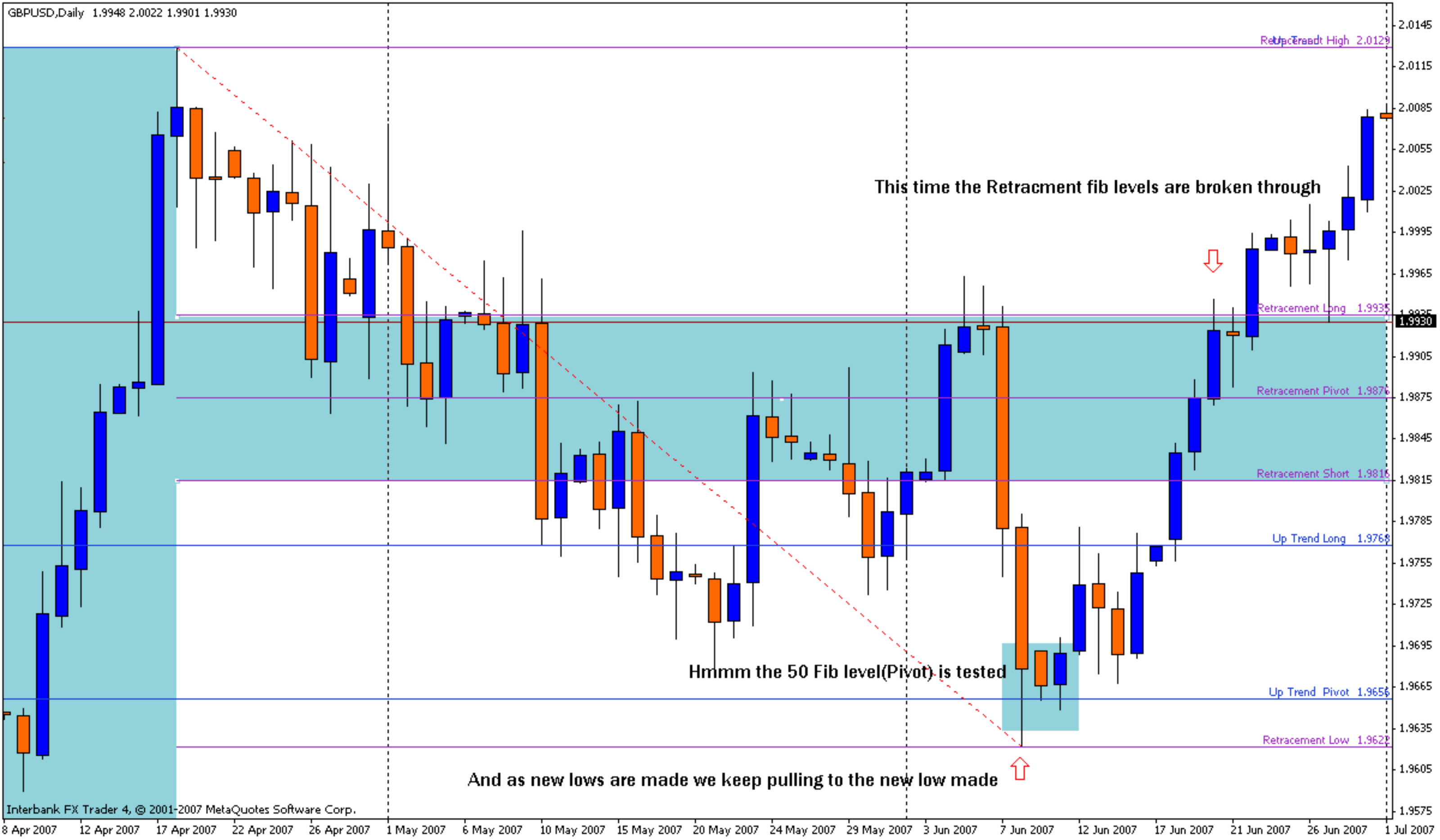
Retracement Low 1.9675

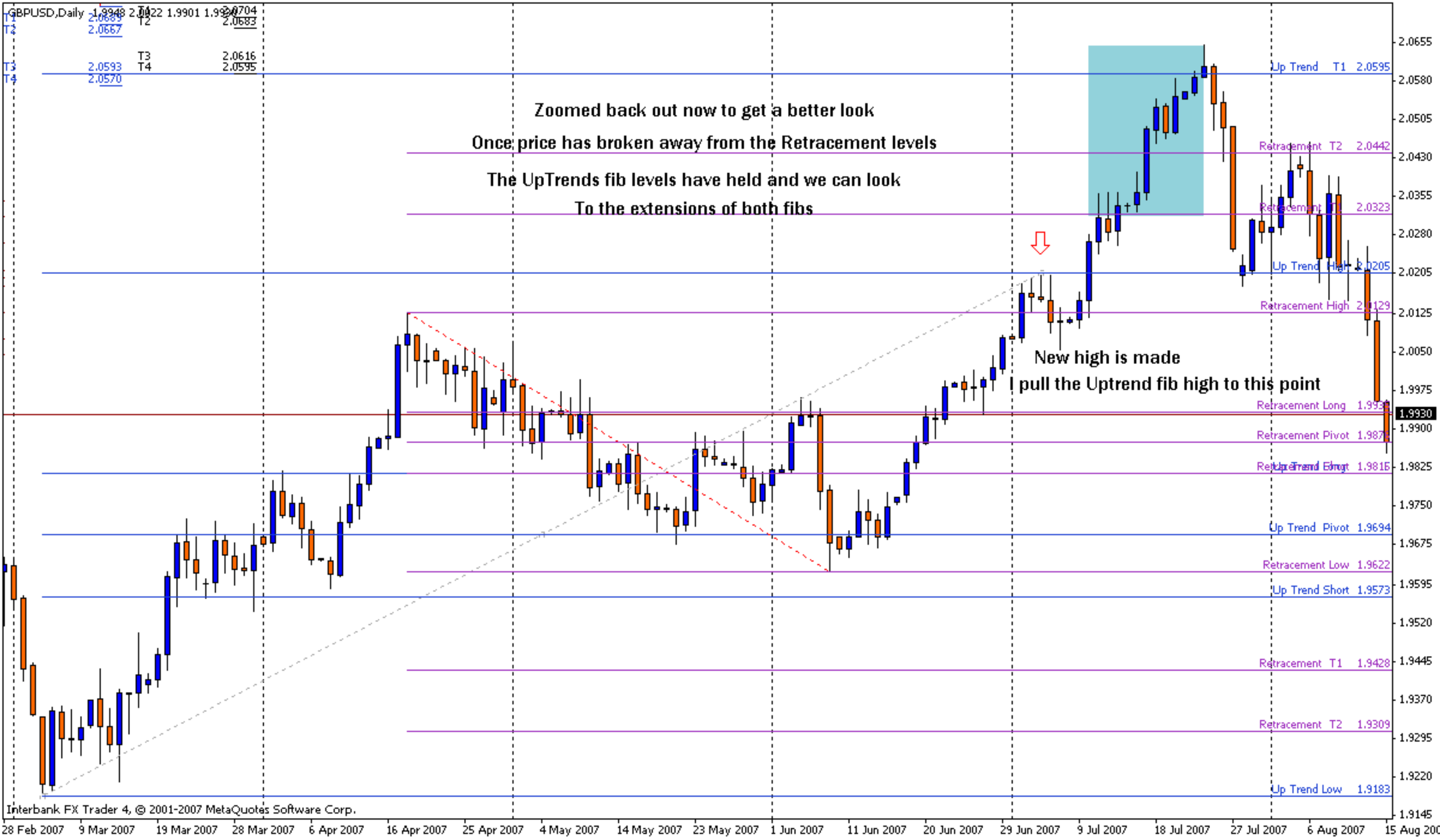
Up Trend Pivot 1.9656

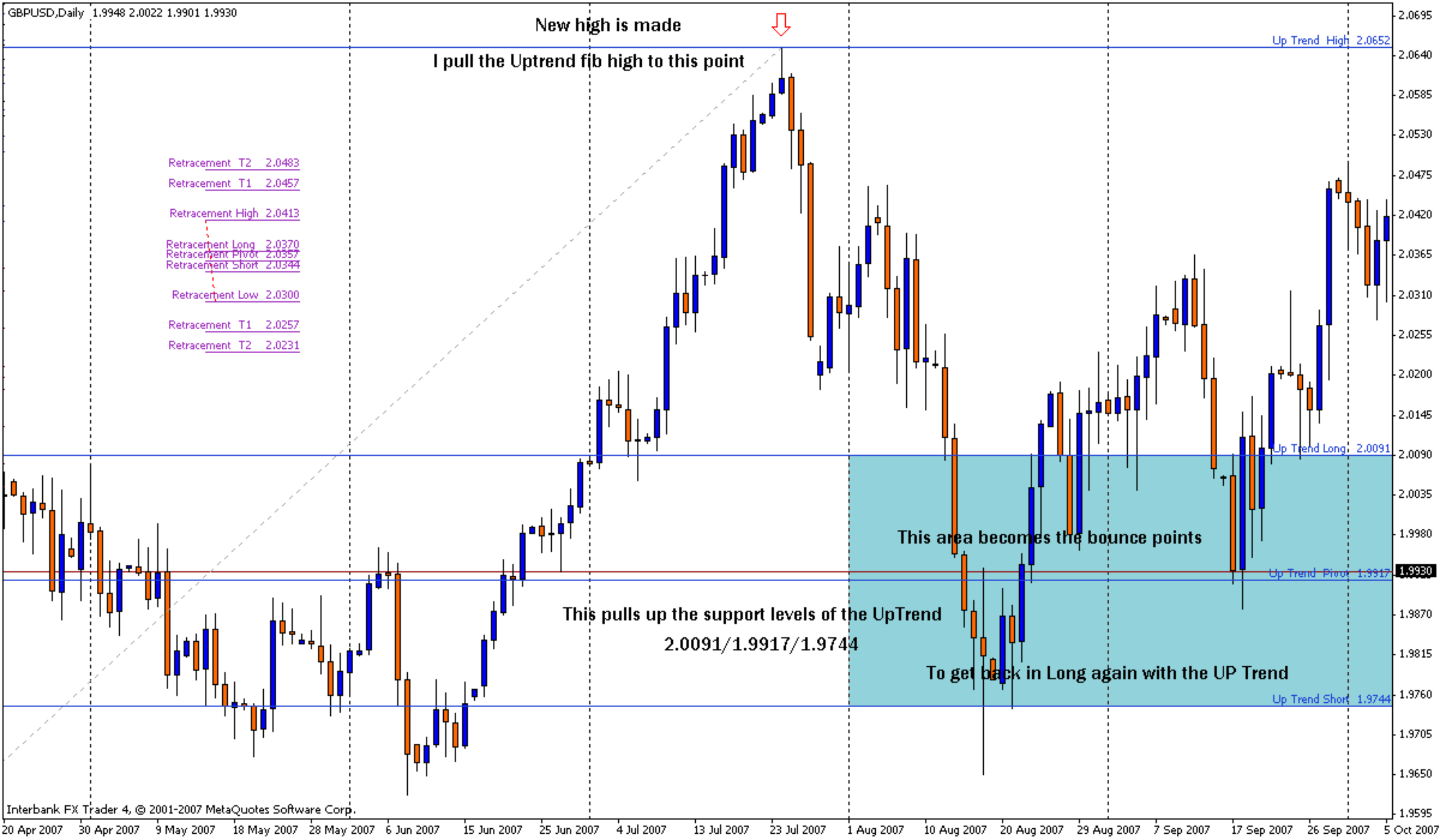
Up Trend Short 1.9544

And as new lows are made we keep pulling to the new low made









New high is made

I pull the Uptrend fib high to this point

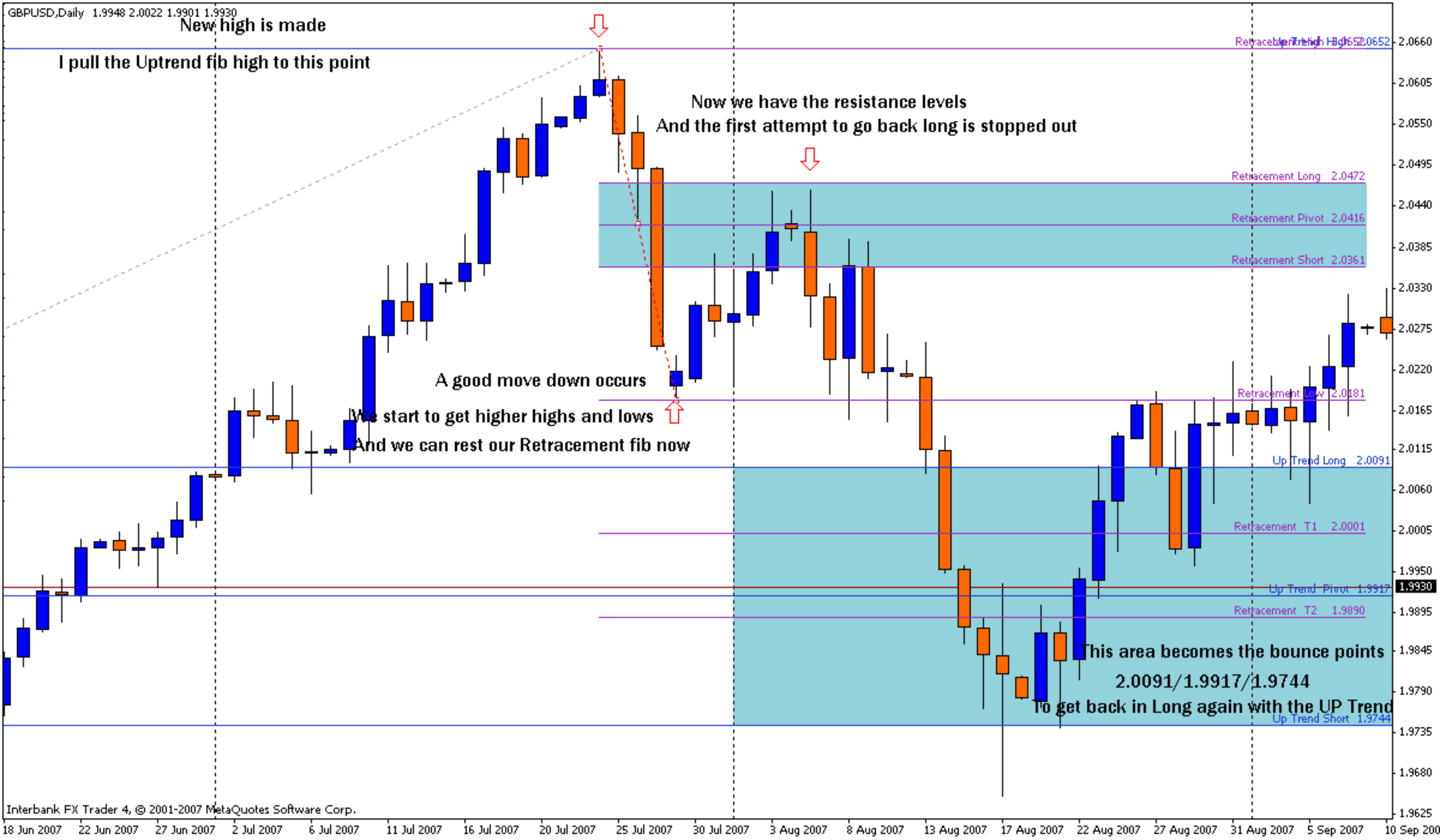
Now we have the resistance levels
And the first attempt to go back long is stopped out

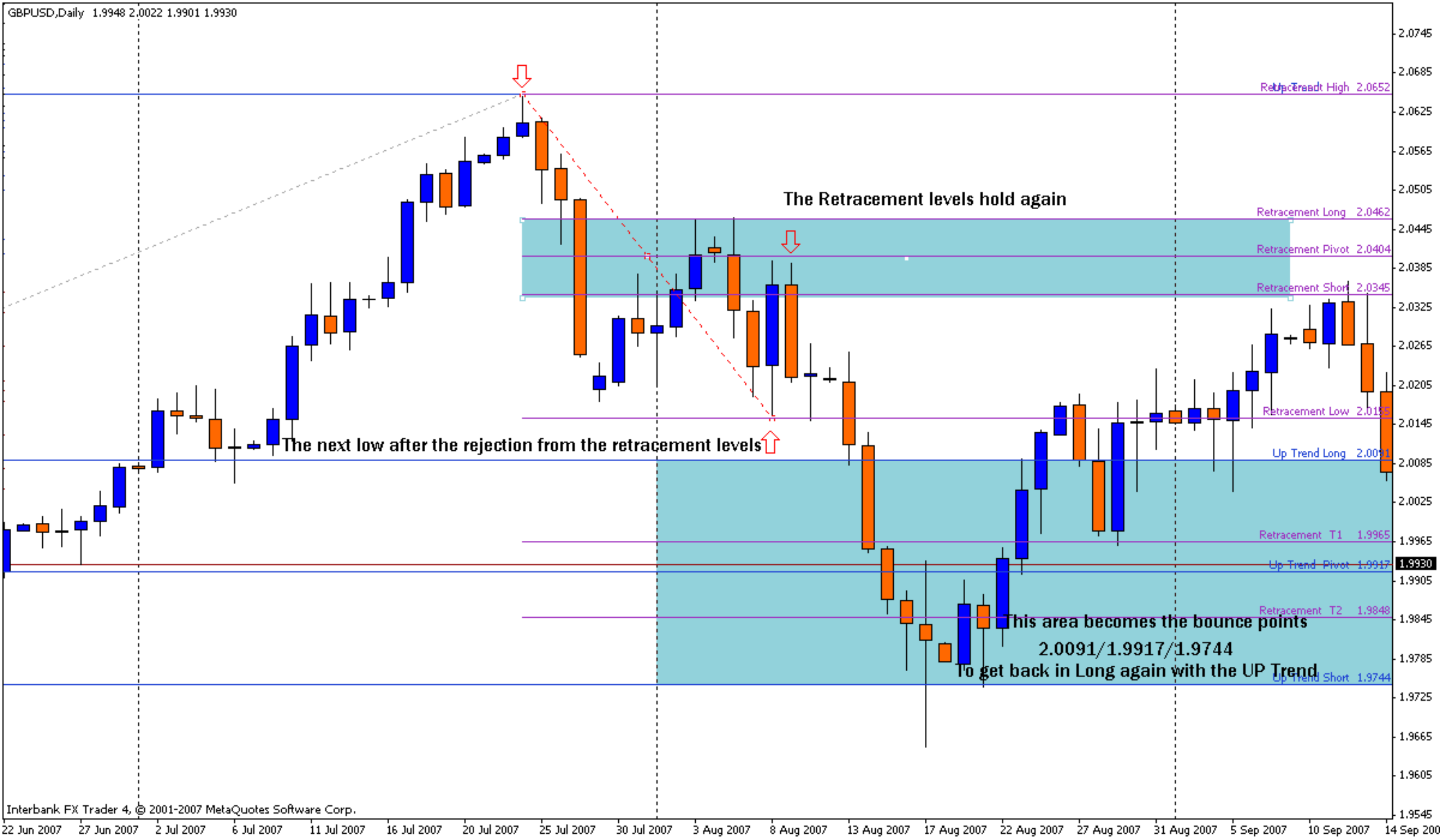
A good move down occurs

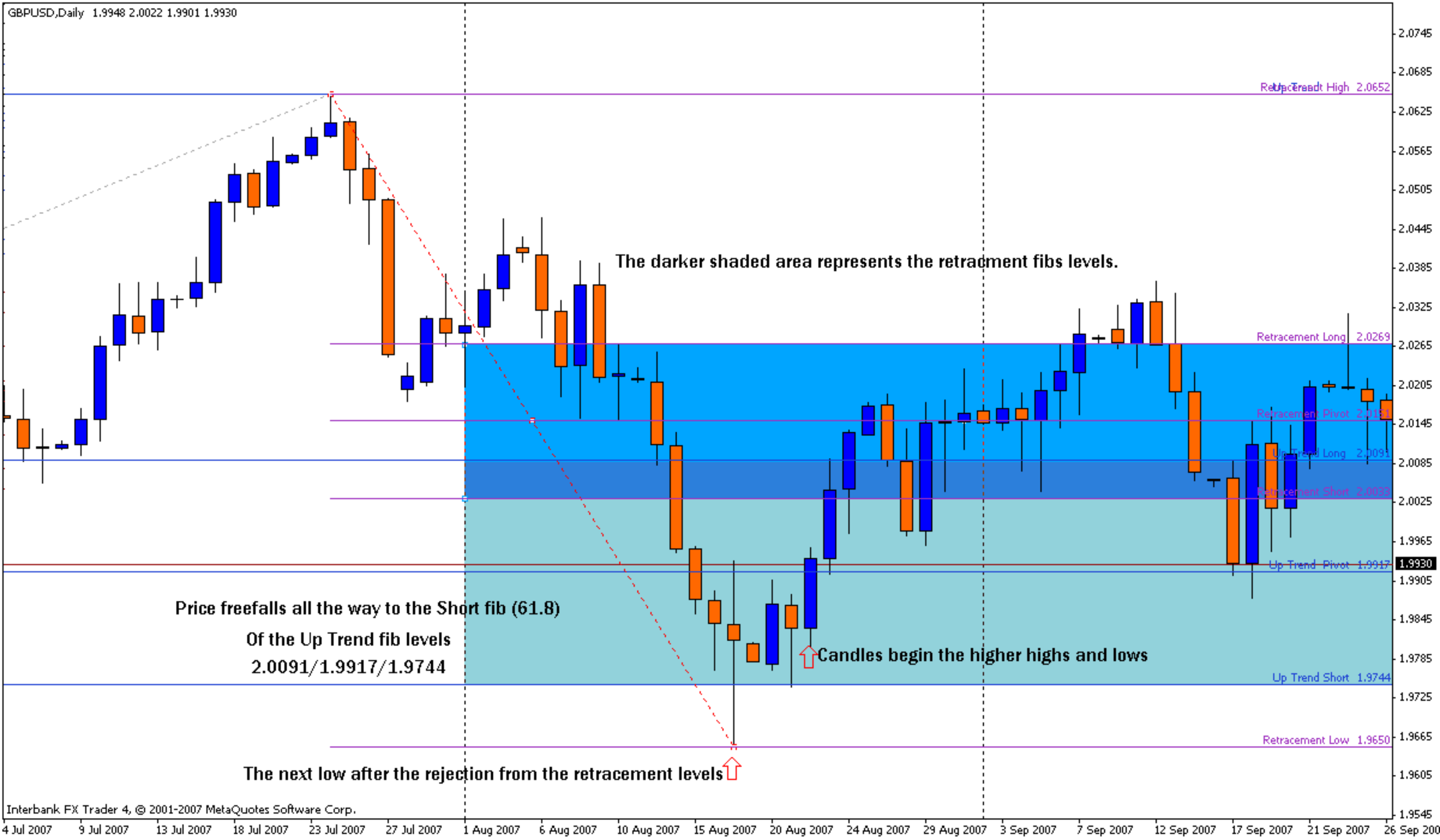
We start to get higher highs and lows

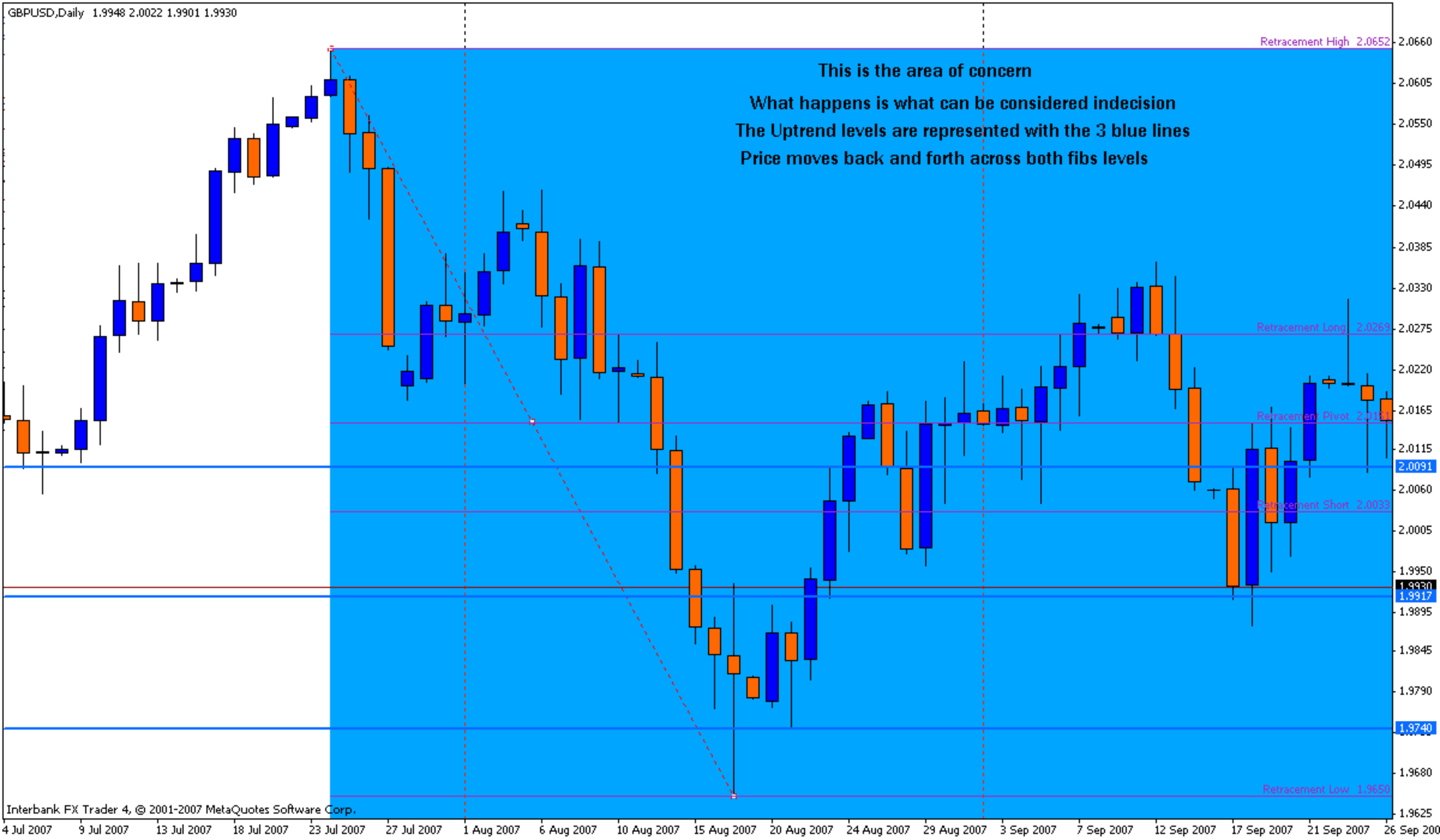
And we can rest our Retracement fib now

This area becomes the bounce points
2.0091/1.9917/1.9744
To get back in Long again with the UP Trend



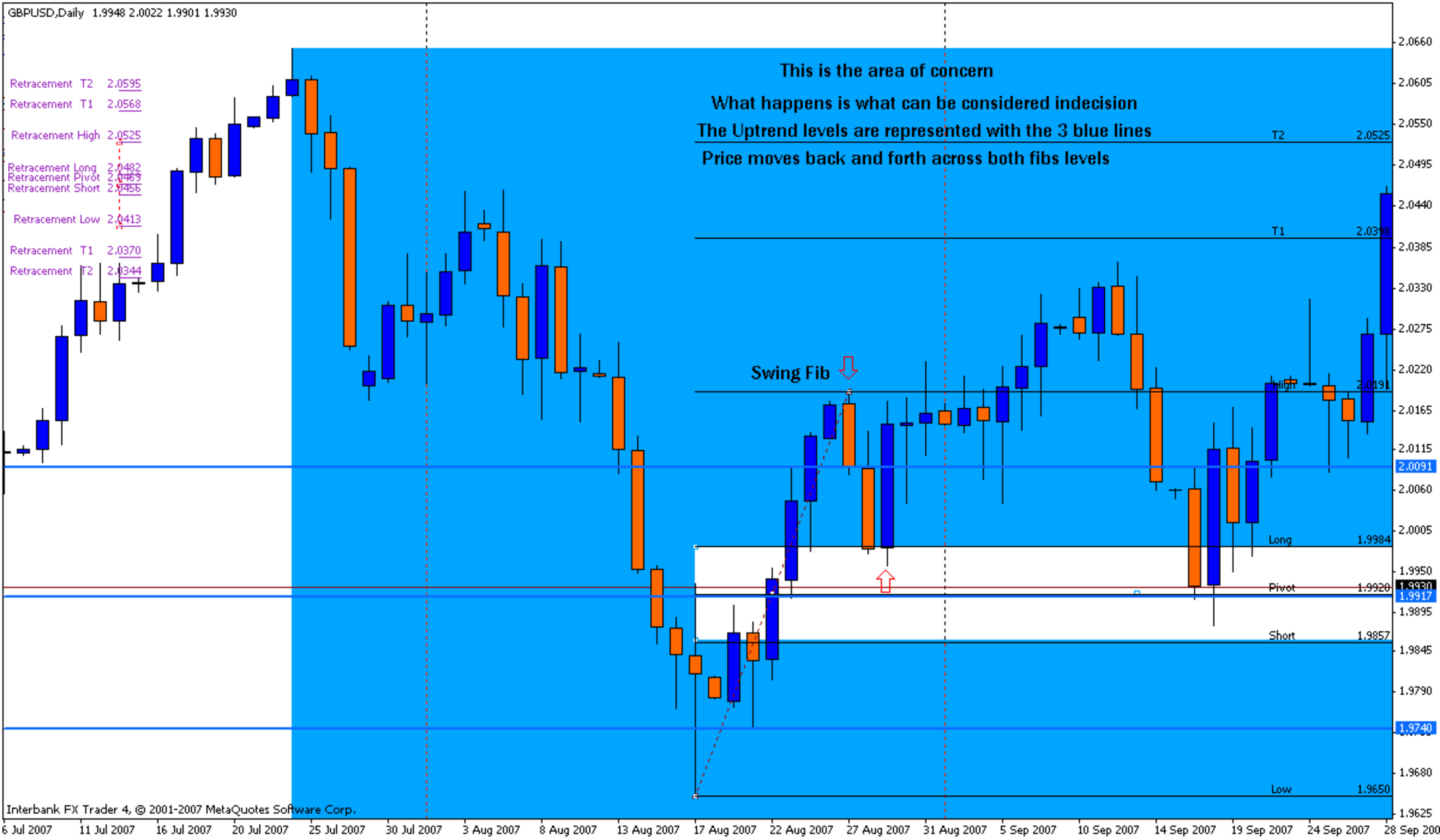






Retracement T2 2.0595
 Retracement T1 2.0568
 Retracement High 2.0525
 Retracement Long 2.0482
 Retracement Pivot 2.0459
 Retracement Short 2.0456
 Retracement Low 2.0413
 Retracement T1 2.0370
 Retracement T2 2.0344

This is the area of concern
 What happens is what can be considered indecision
 The Uptrend levels are represented with the 3 blue lines
 Price moves back and forth across both fibs levels



2.0595
2.0568
2.0525
2.0482
2.0463
2.0456
2.0413
2.0370
2.0344

This is the area of concern
What happens is what can be considered indecision
The Uptrend levels are represented with the 3 blue lines
Price moves back and forth across both fibs levels

Extensions

Swing Fib

Levels hold

Following progression

in the same manner as with
The retracement fib and move to this new low

2.0566

2.0512

2.0334

2.0280

2.0191

2.0102

2.0075

2.0048

1.9959

1.9870

1.9816

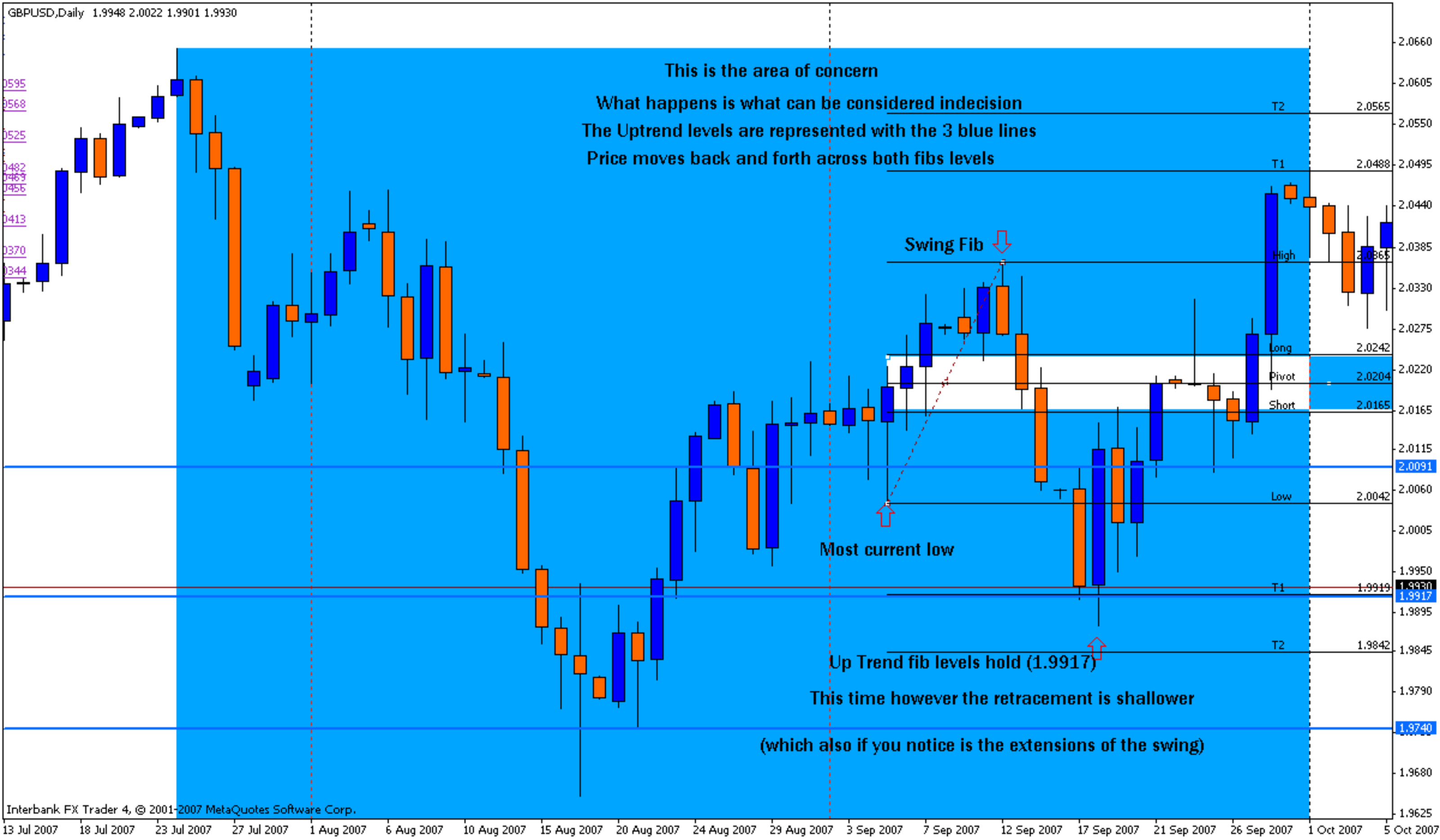
1.9638

2.0091

1.9930

1.9917

1.9740



This is the area of concern
What happens is what can be considered indecision
The Uptrend levels are represented with the 3 blue lines
Price moves back and forth across both fibs levels

Swing Fib

Most current low

Up Trend fib levels hold (1.9917)
This time however the retracement is shallower
(which also if you notice is the extensions of the swing)

T2

T1

Low

T1

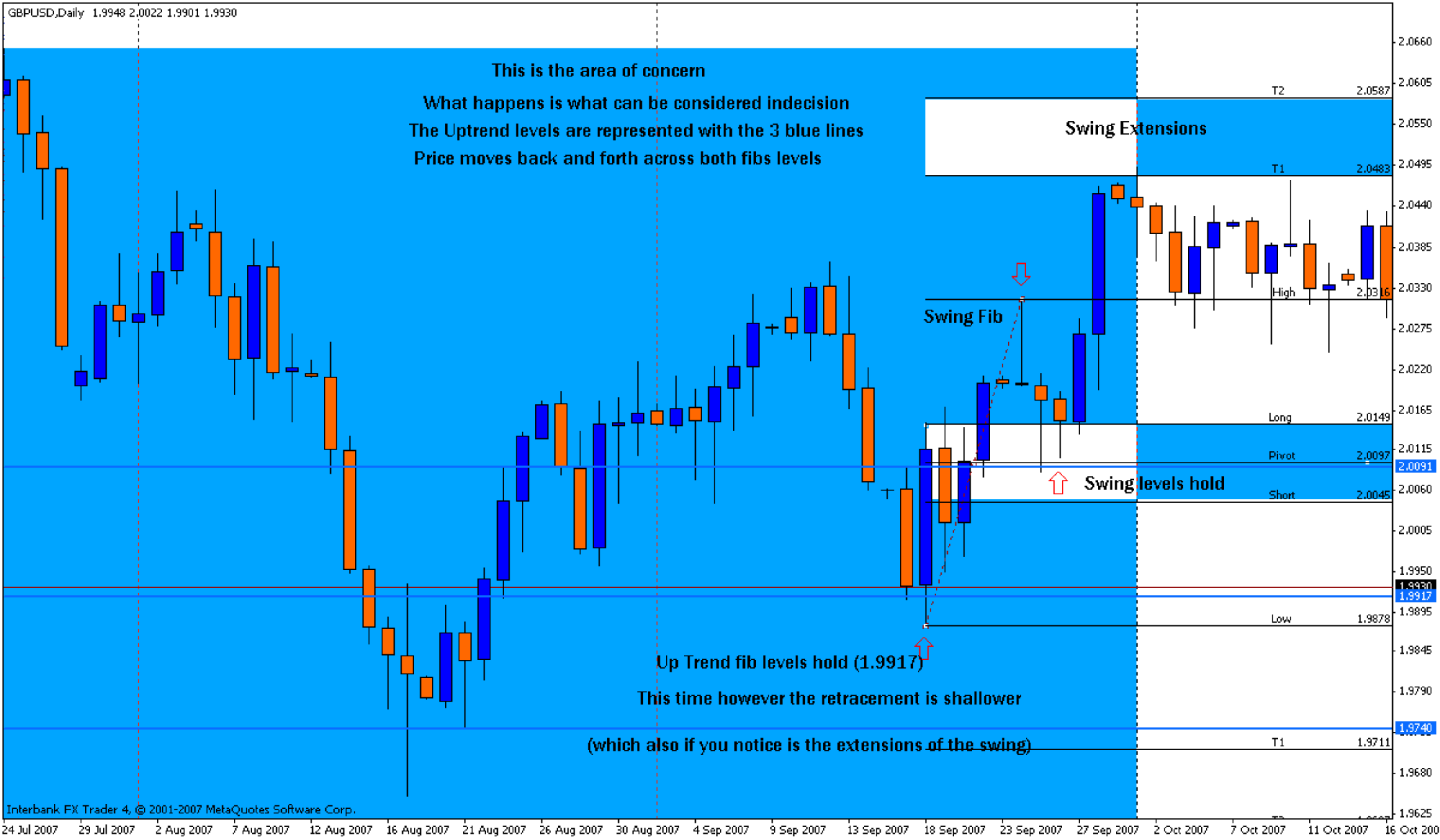
T2

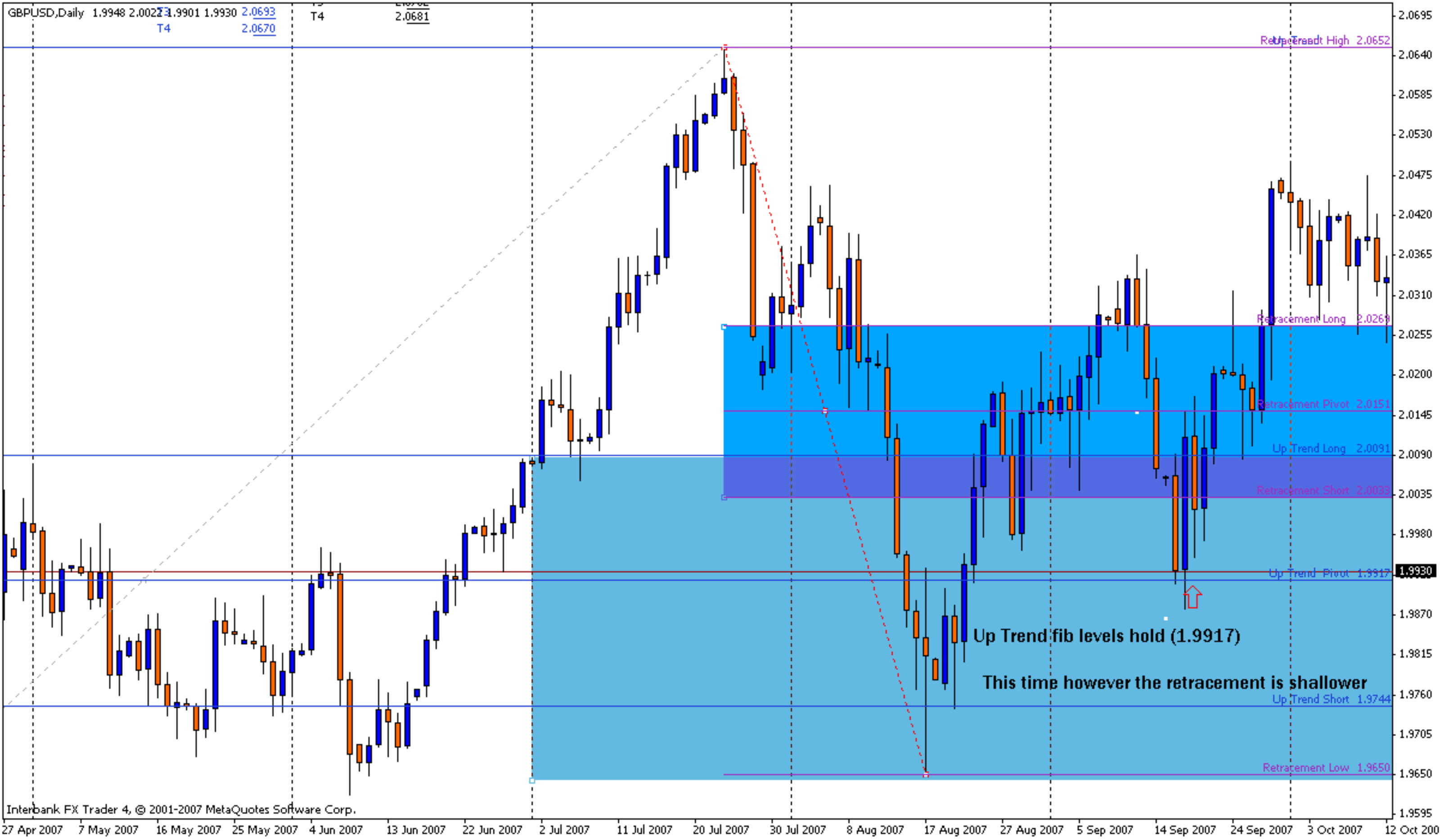
High

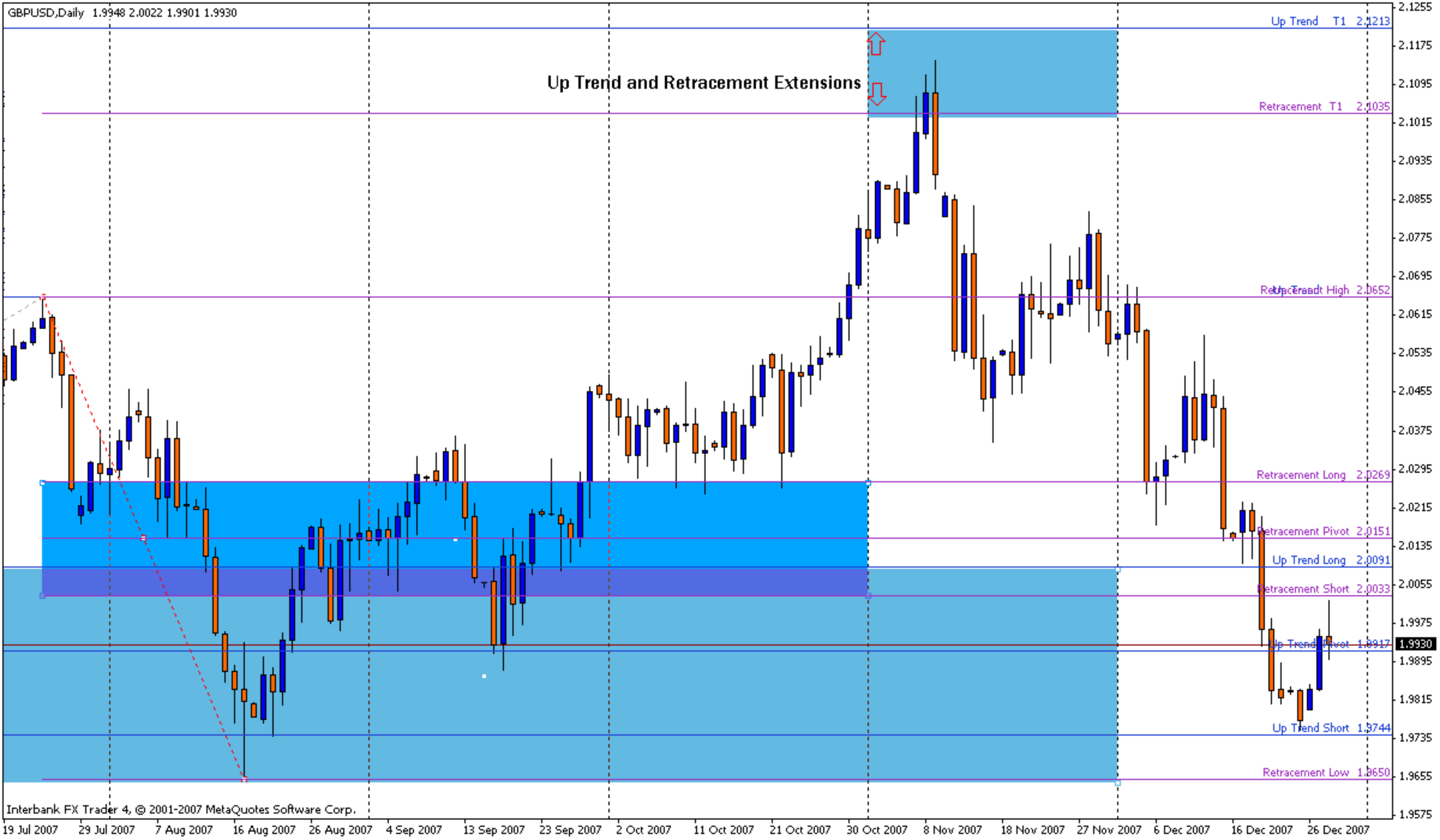
Long

Pivot

Short

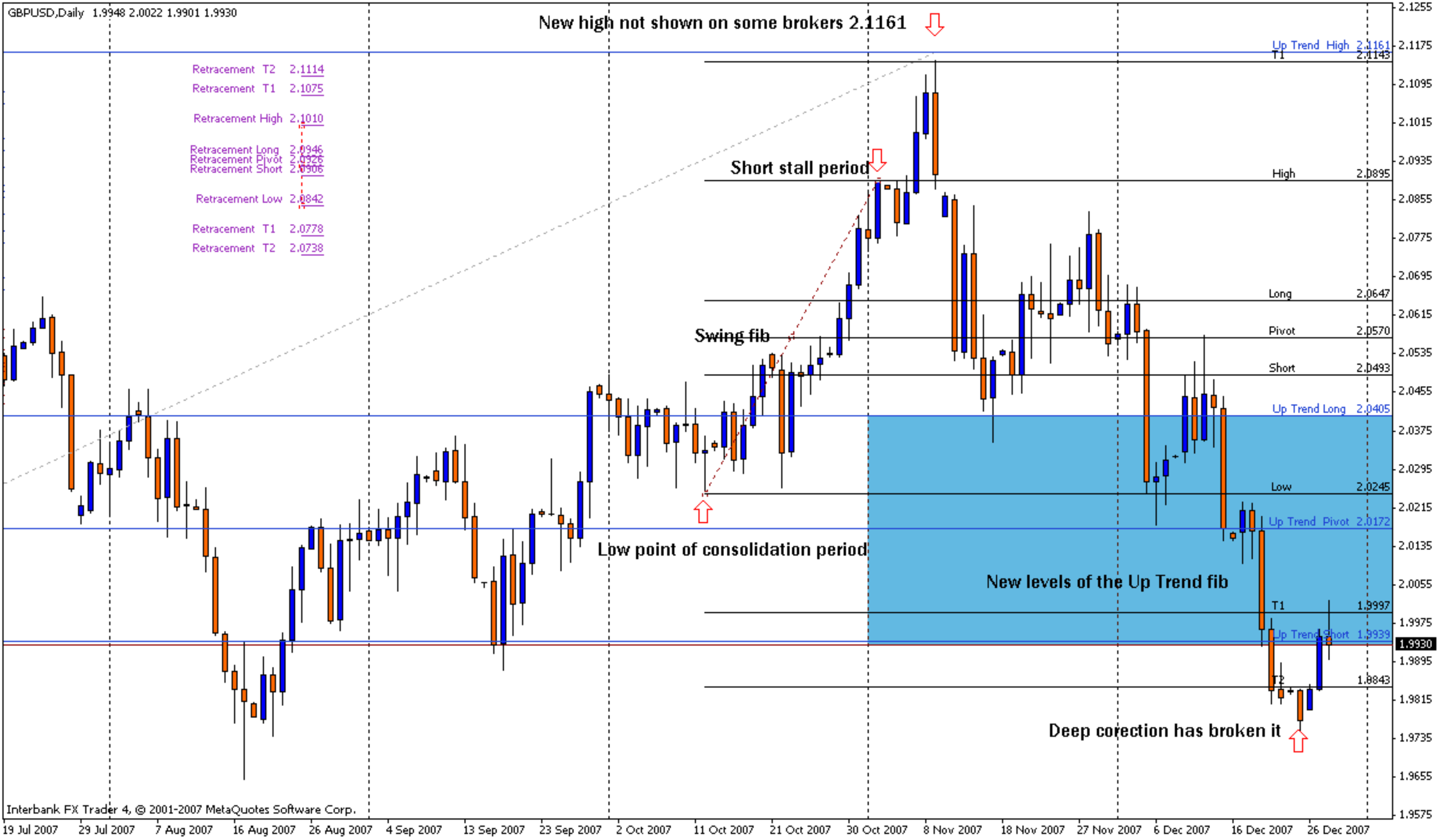


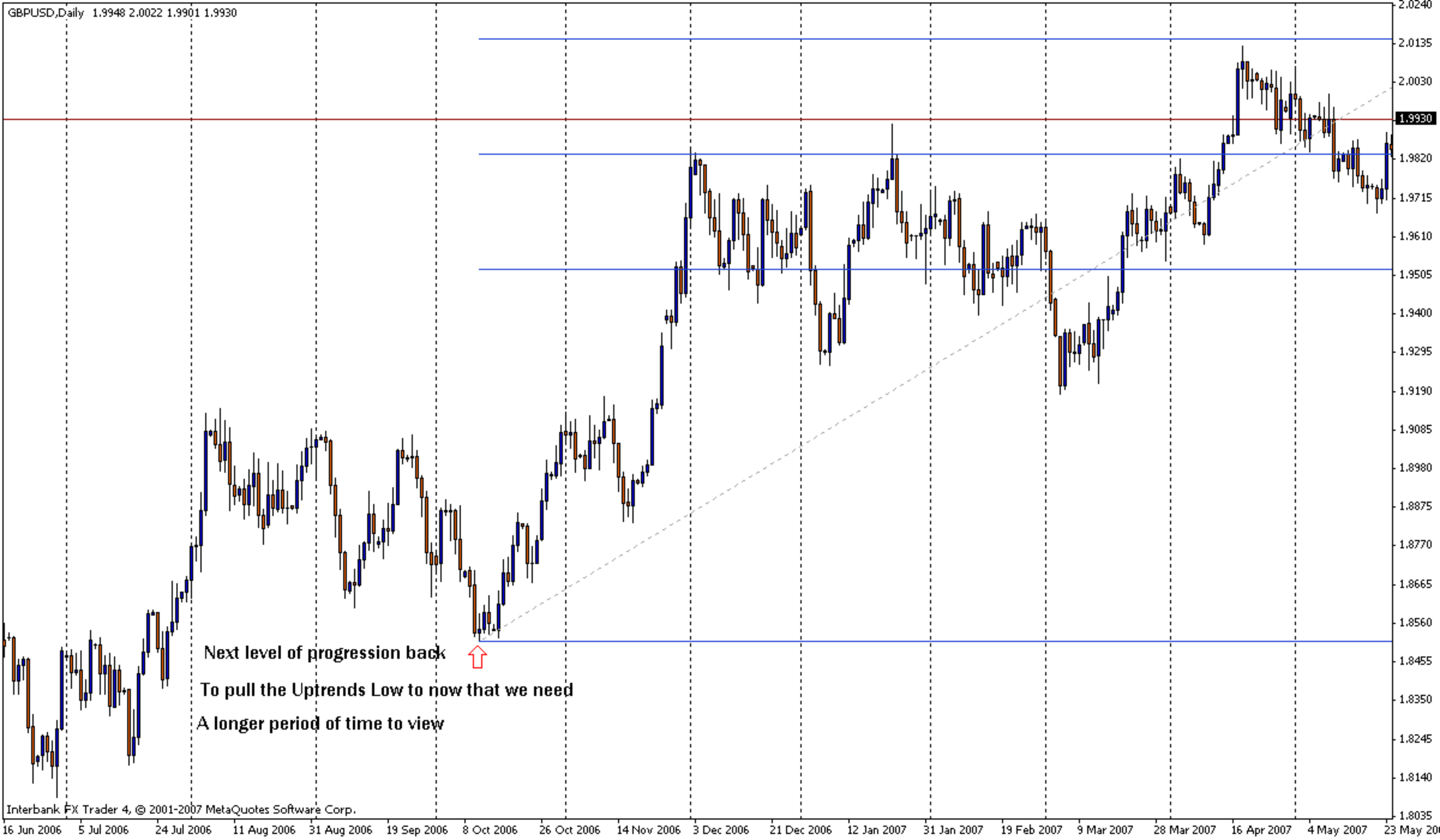




New high not shown on some brokers 2.1161

Retracement T2 2.1114
Retracement T1 2.1075
Retracement High 2.1010
Retracement Long 2.0946
Retracement Pivot 2.0926
Retracement Short 2.0906
Retracement Low 2.0842
Retracement T1 2.0778
Retracement T2 2.0738





New high not shown on some brokers 2.1161

T4	2.1085	T4	2.1107
T3	2.1062	T3	2.1083
T2	2.0989	T2	2.1004
T1	2.0966	T1	2.0980
High	2.0929	High	2.0941
Long	2.0893	Long	2.0901
Short	2.0855	Short	2.0864
Low	2.0833	Low	2.0837
T1	2.0797	T1	2.0798
T2	2.0774	T2	2.0779
T3	2.0701	T3	2.0695
T4	2.0678	T4	2.0671

Down Trend T2 2.0586
 Down Trend T1 2.0570
 Down Trend High 2.0543
 Down Trend Low 2.0474
 Down Trend T1 2.0448
 Down Trend T2 2.0431

The Retracement fib process starts all over again now.

Retracement fib process starts again

New levels of the Up Trend fib

Retracement fibs levels

Retracement Long 2.0852

Retracement Pivot 2.0797

Retracement Short 2.0661

Retracement Low 2.0352

Up Trend Long 2.0149

Retracement T1 2.0043

Retracement T2 1.9856

Up Trend Pivot 1.9856

Up Trend Short 1.9523

