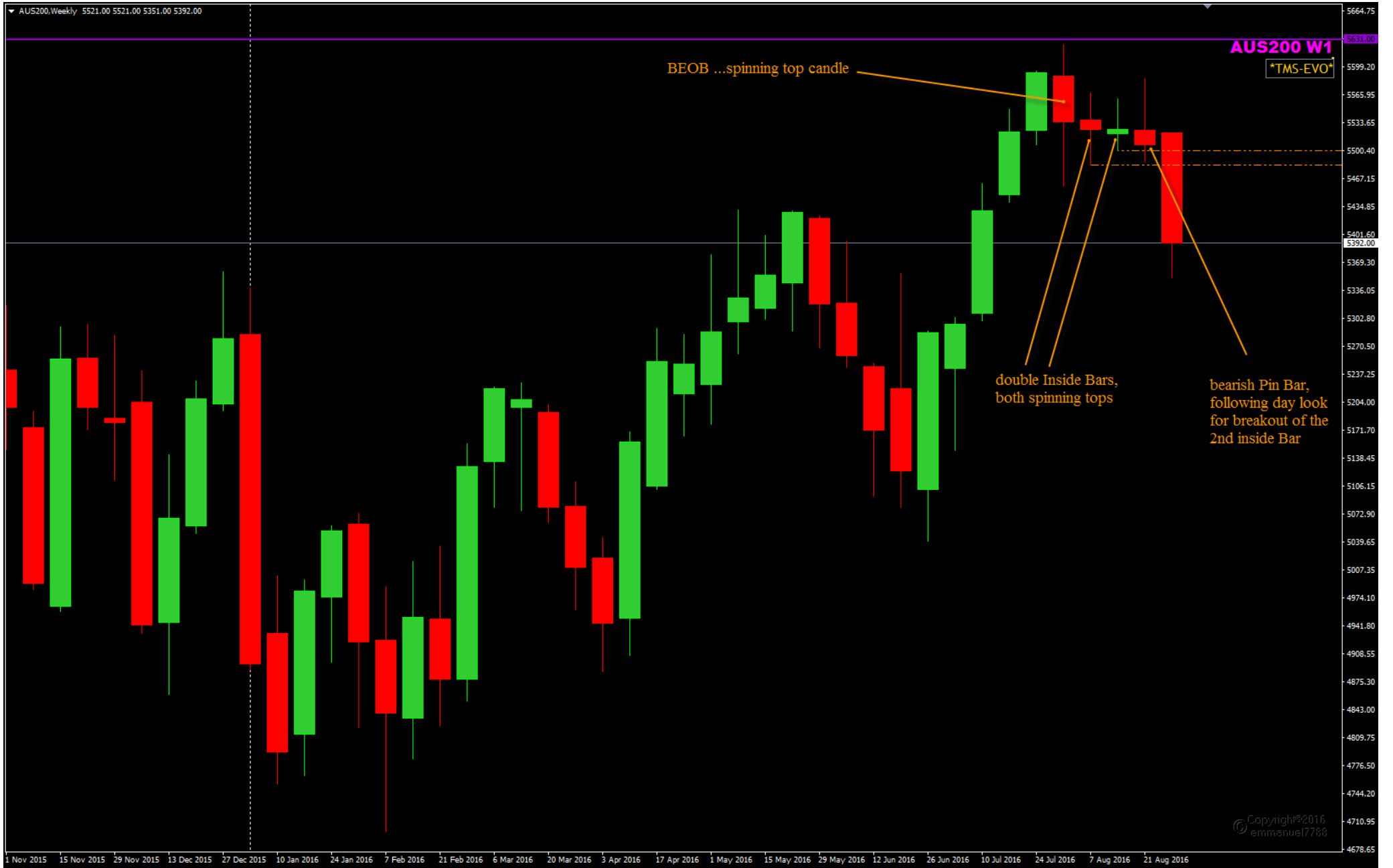


AUS200 Week 25 D1 chart sell on Tuesday Aug 30



AUS200,Daily 5412.00 5412.00 5351.00 5392.00

AUS200 D1

TMS-EVO

Monday Sep29
close below 2nd IB

sell on Tue Sep30

pull back from support!

Copyright©2016
emmanuel7788

5 Jul 2016 7 Jul 2016 11 Jul 2016 13 Jul 2016 15 Jul 2016 19 Jul 2016 21 Jul 2016 25 Jul 2016 27 Jul 2016 29 Jul 2016 2 Aug 2016 4 Aug 2016 8 Aug 2016 10 Aug 2016 12 Aug 2016 16 Aug 2016 18 Aug 2016 22 Aug 2016 24 Aug 2016 26 Aug 2016 30 Aug 2016 1 Sep 2016

5645.50
5626.50
5611.50
5594.50
5578.00
5561.00
5544.00
5527.00
5510.00
5493.00
5476.00
5459.00
5442.00
5425.50
5408.50
5392.00
5374.50
5357.50
5340.50
5323.50
5290.00
5273.00
5256.00
5239.00
5222.00
5205.00
5188.00
5171.00
5154.00
5137.50

