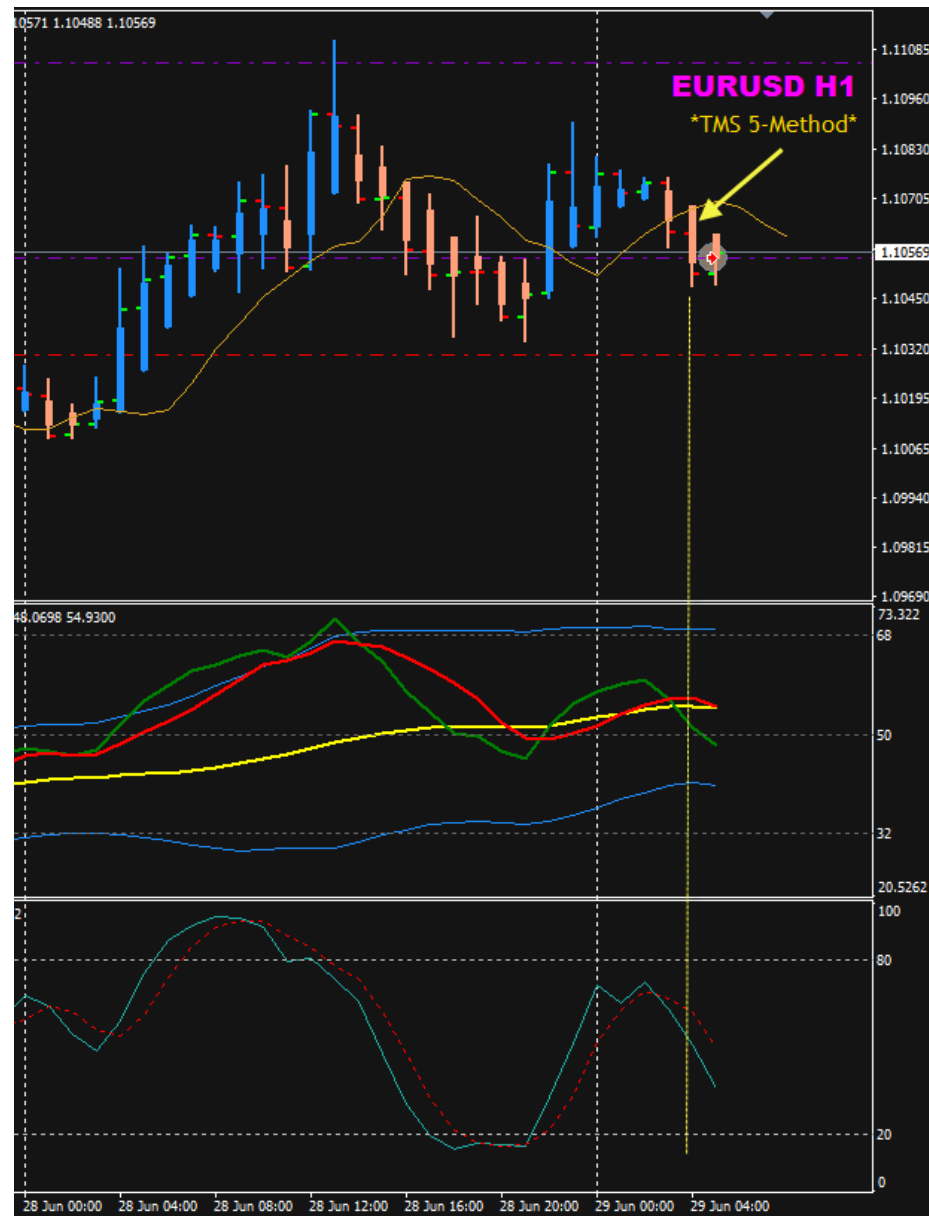


EURUSD Week 26 Trade after Brexit.

...the H1 setup candle on 28 June Tokyo session



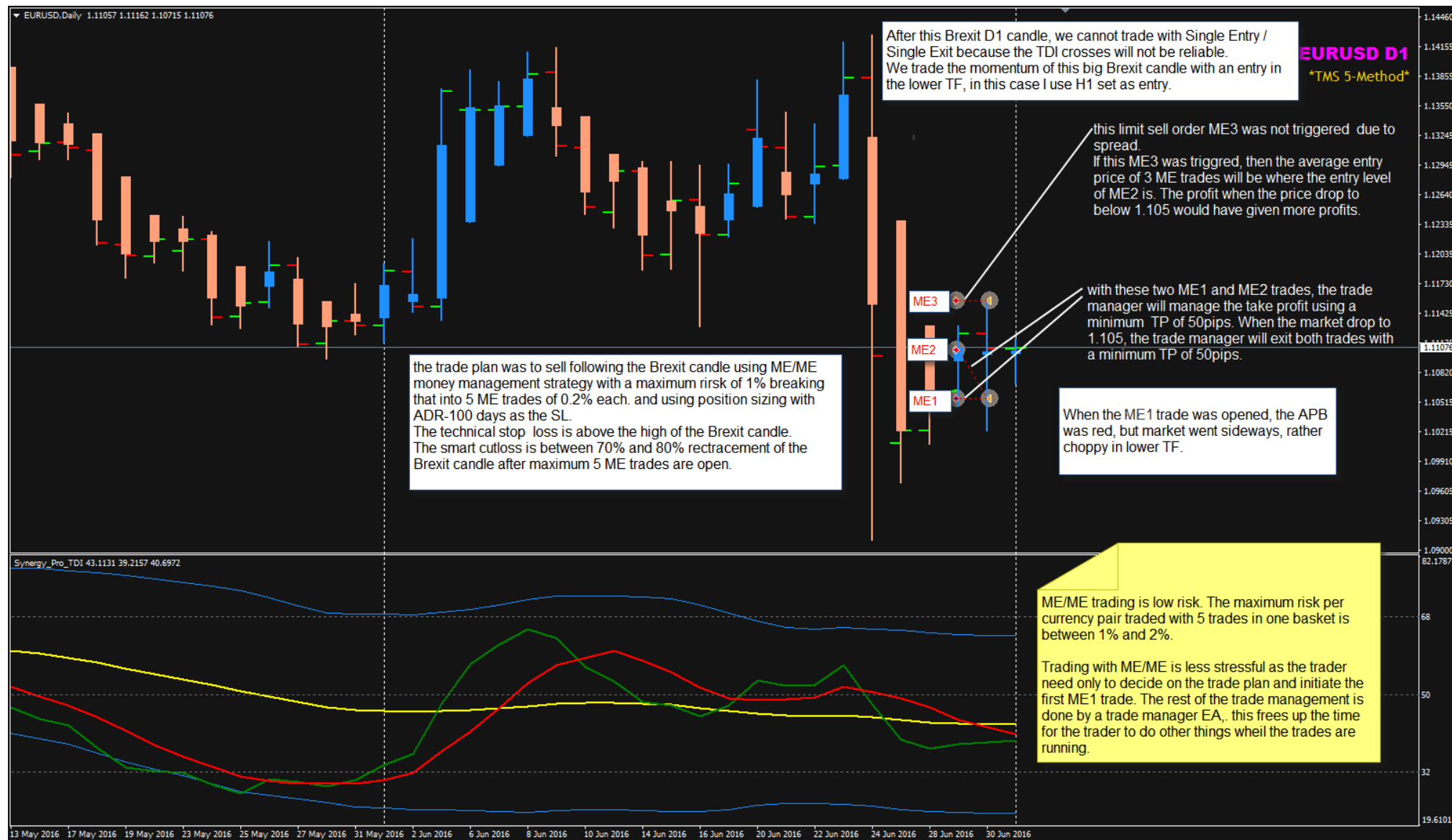
Set-up candle is the candle which closes across the 5EMA, Typical Price, Shift+3, and TDI cross as confirmation. the Stoch only to show the direction which must be the same as the TDI



... trades closed.



... trade plan was on D1 chart not H1



...