

EURUSD Big Picture Plan – Week 12 Mar 21 to 25

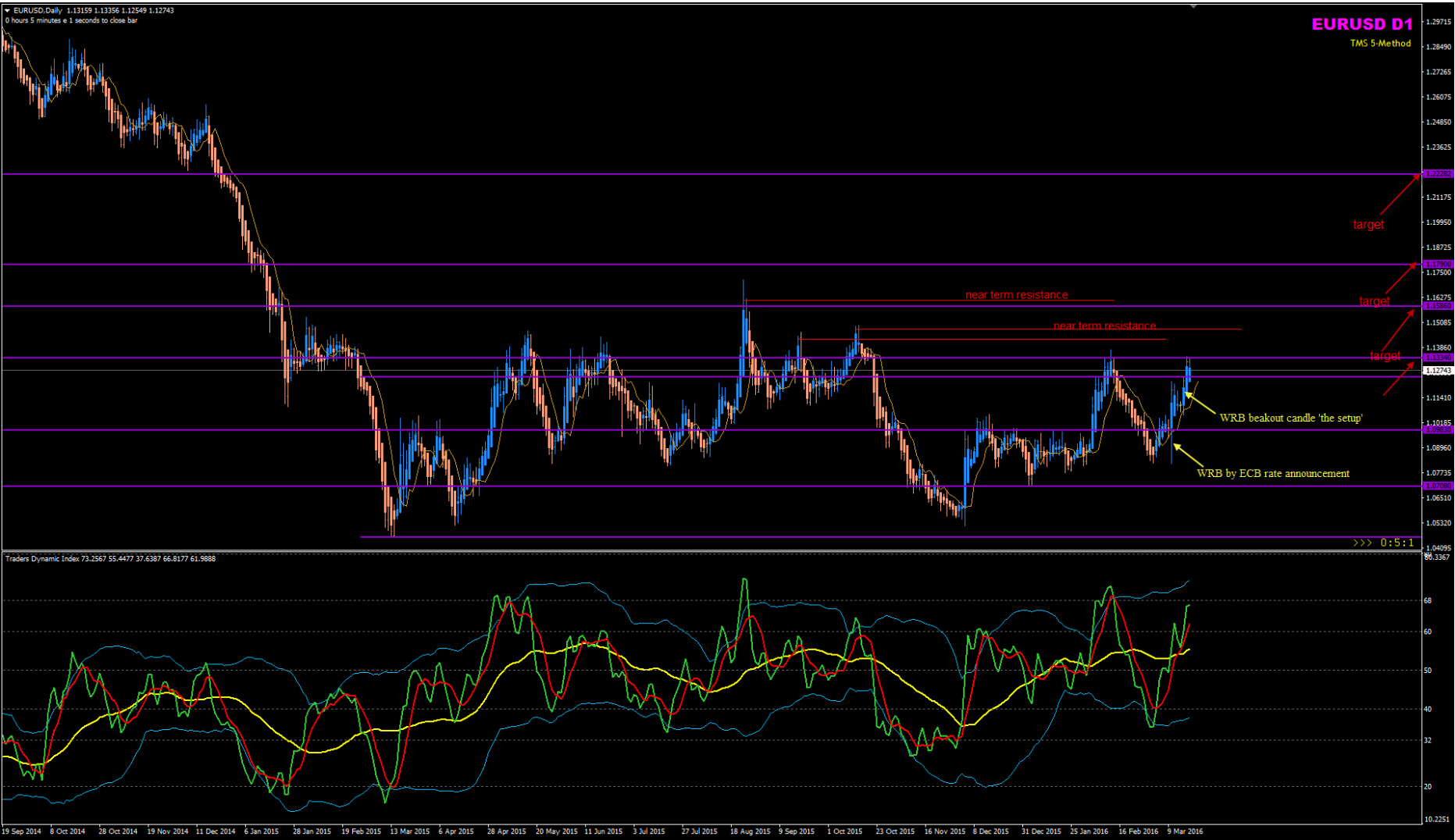
Monthly chart



Weekly chart



Daily chart



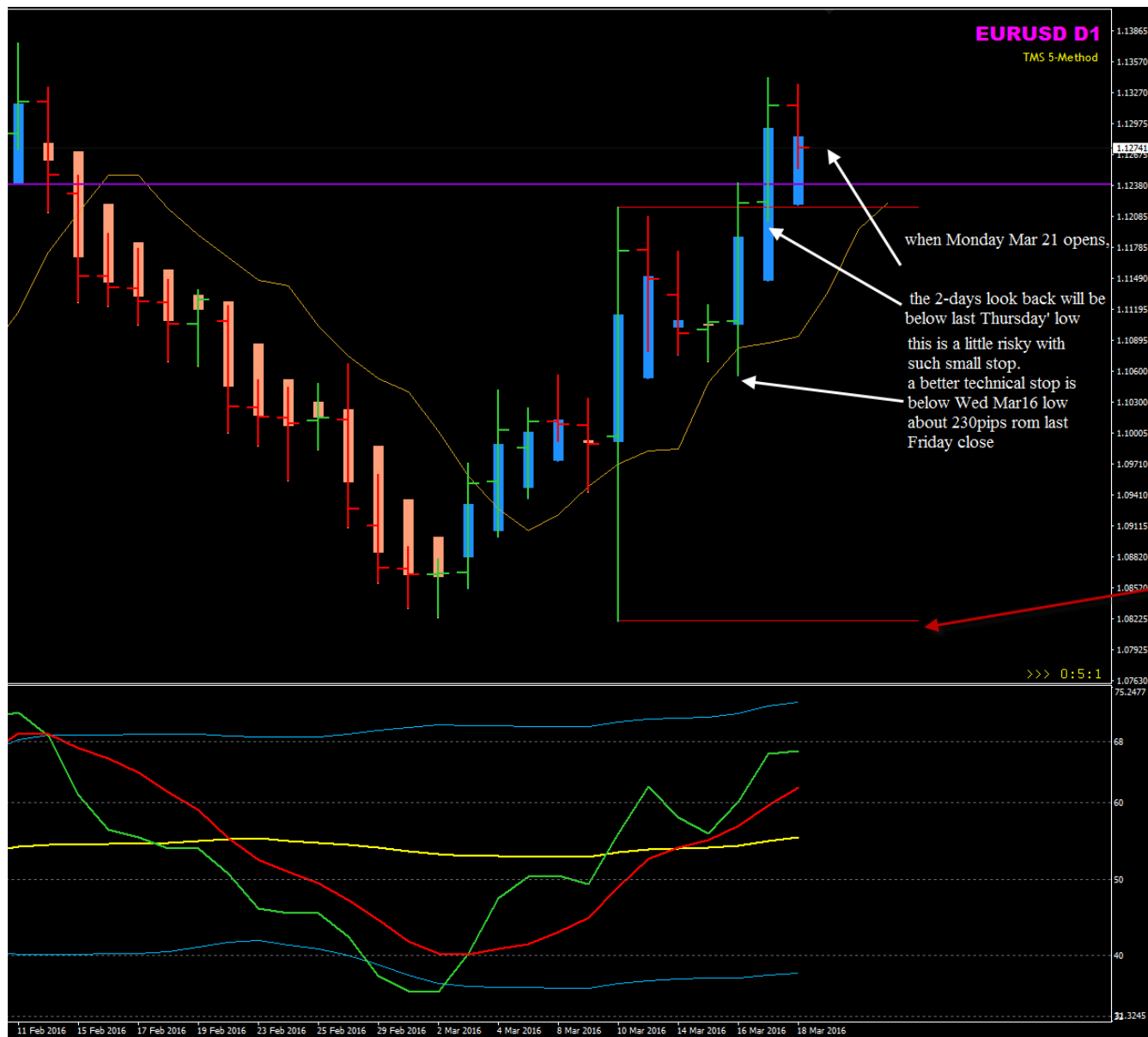
D1 Trade Set-up



H4 Entry and Exit



Week 12 trade plan



Another way is to trade with ME/ME in week 12. using 5 smaller entries of 0.2% risk each and build up to one full position of 1% maximum risk.

The initial SL should be the low of that D1 WRB which is also the previous 2 weeks low. Distance between ME trades is 0.5ADR 100 days = 53pips.

There is sufficient room for have maximum 5 trades in case market retraces. We shall monitor this on daily basis and manage our position.