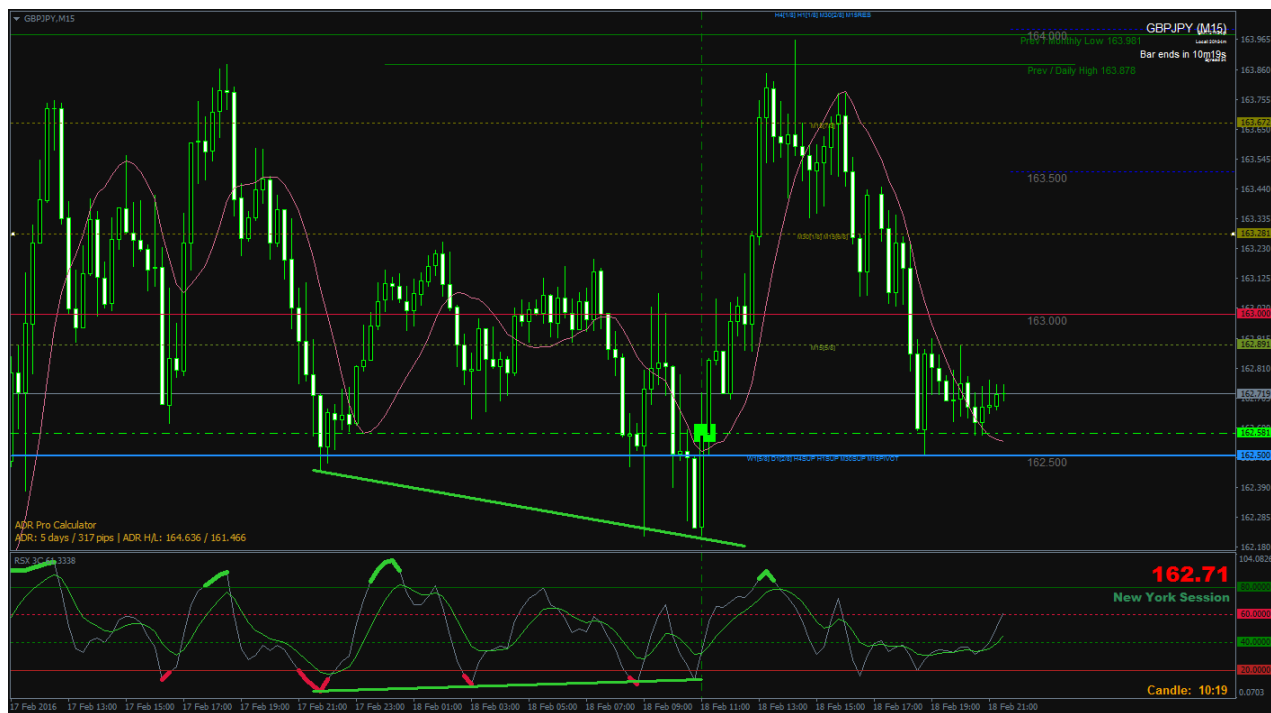


Hi, good question. The first trade is opened because 5m bearish divergence and breakout lower level of asian session (pic.1), but obviously too late because the price has created multi timeframe bullish divergences. That I have not noticed in time. So, when the price turned against me, I closed my trade and opened two long orders.



Pic.1

In the next few pictures can be seen the reason for opening a long orders, price broke 5m cloud, 15m MA and at the same time we have mtf bullish divergences.



Pic.2 15m bullish divergence



Pic.2 30m bullish divergence and even 1H

