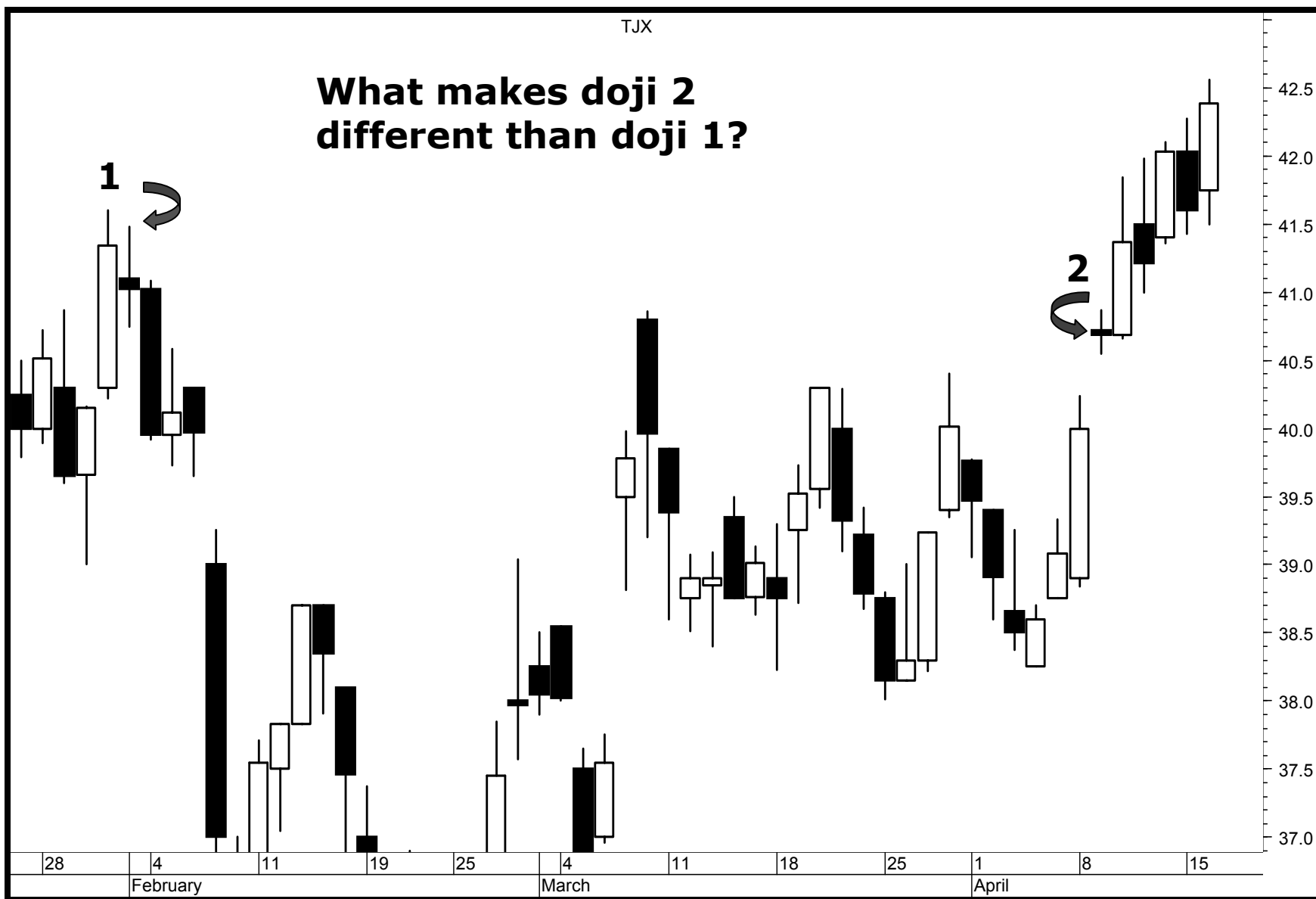


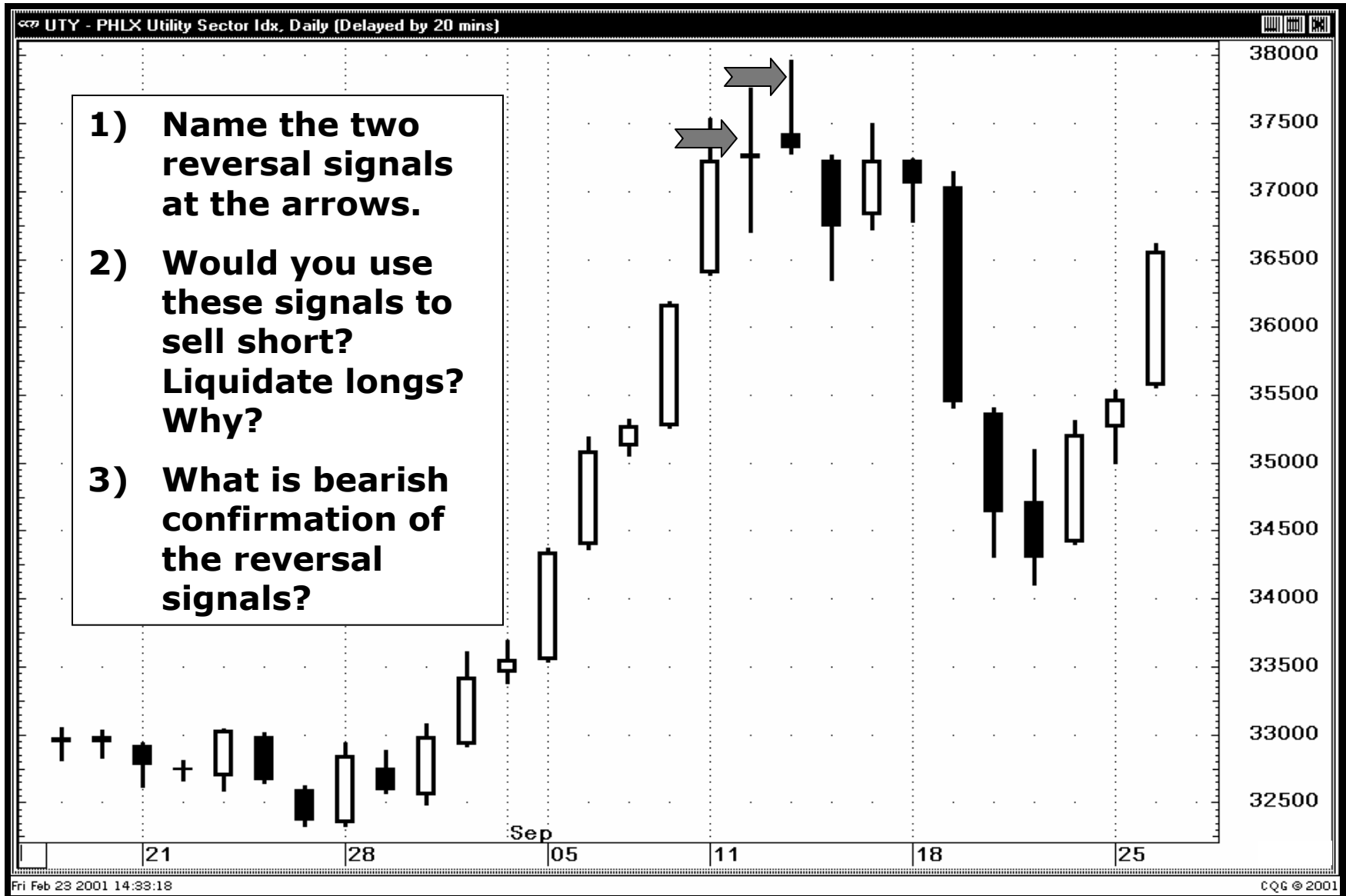
Doji

TJX

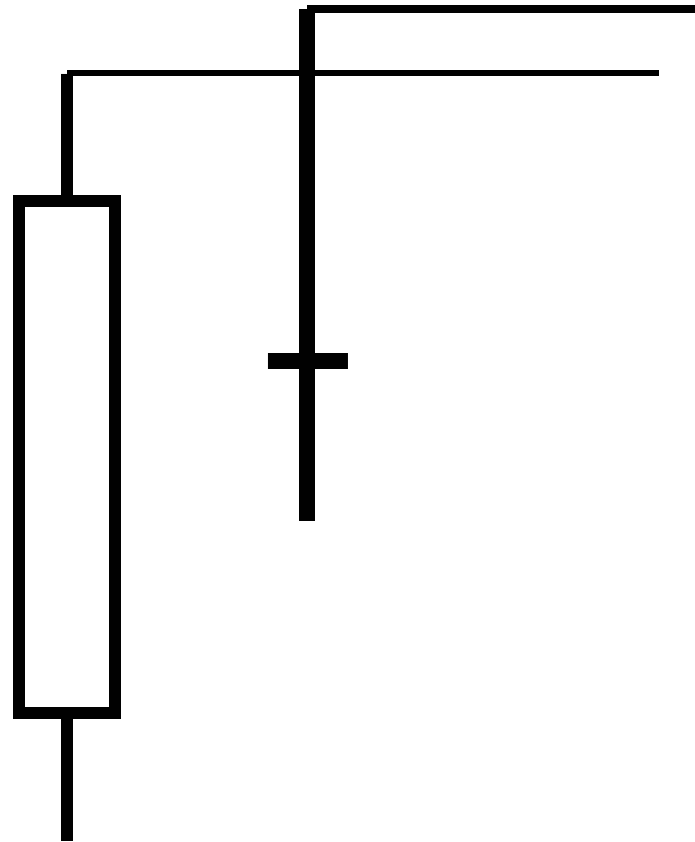
What makes doji 2 different than doji 1?



Trading Tactics



Doji as Resistance



Criteria: Use the highest high of those two sessions (top of upper shadow) as resistance

Implication: Close over that area:
market is “refreshed”

Doji



Small Real Body as a doji



Doji after tall white



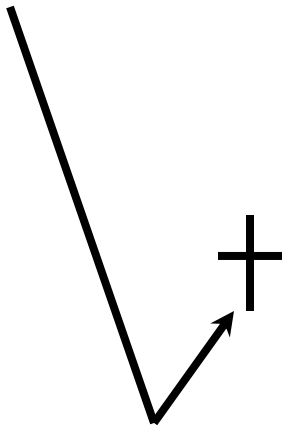
Doji as Resistance



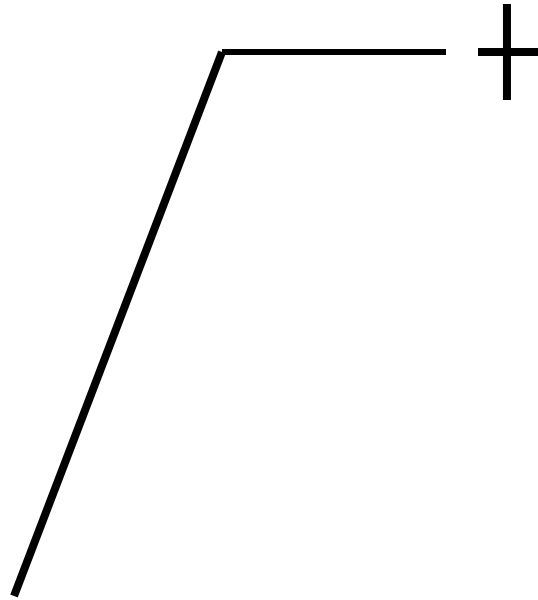
Trading Tactics - *Doji*

Analyze these doji in the context of what happened before. Are any of these a more likely reversal and why?

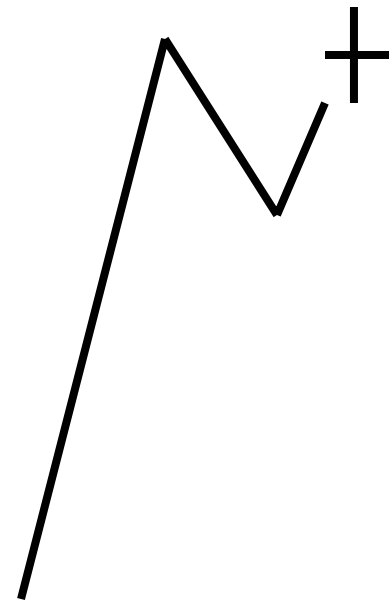
A -1



B-2



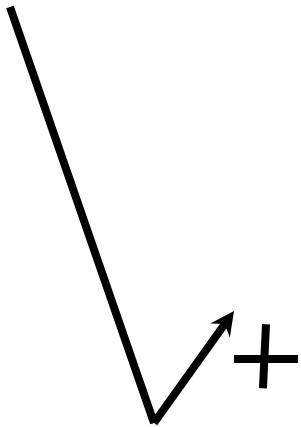
C-3



Trading Tactics – *Doji* (answer)

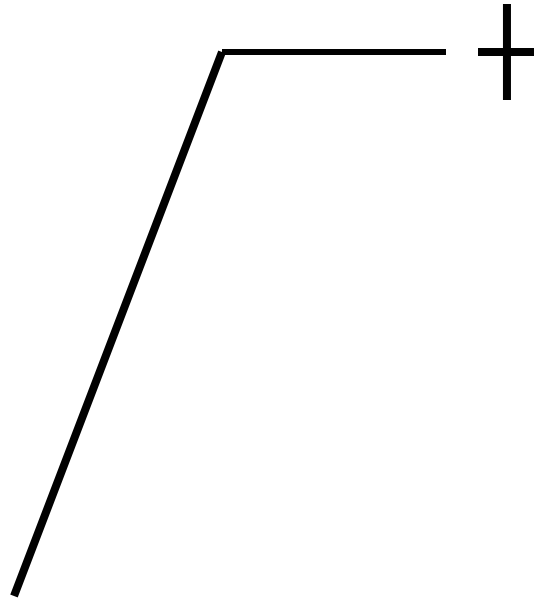
Analyze these doji in the context of what happened before. Are any of these a more likely reversal and why?

A-1



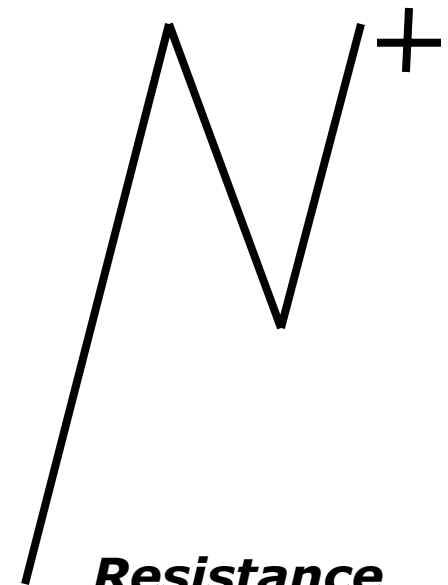
***Rally may
just be
starting***

B-2



***Market not
overextended***

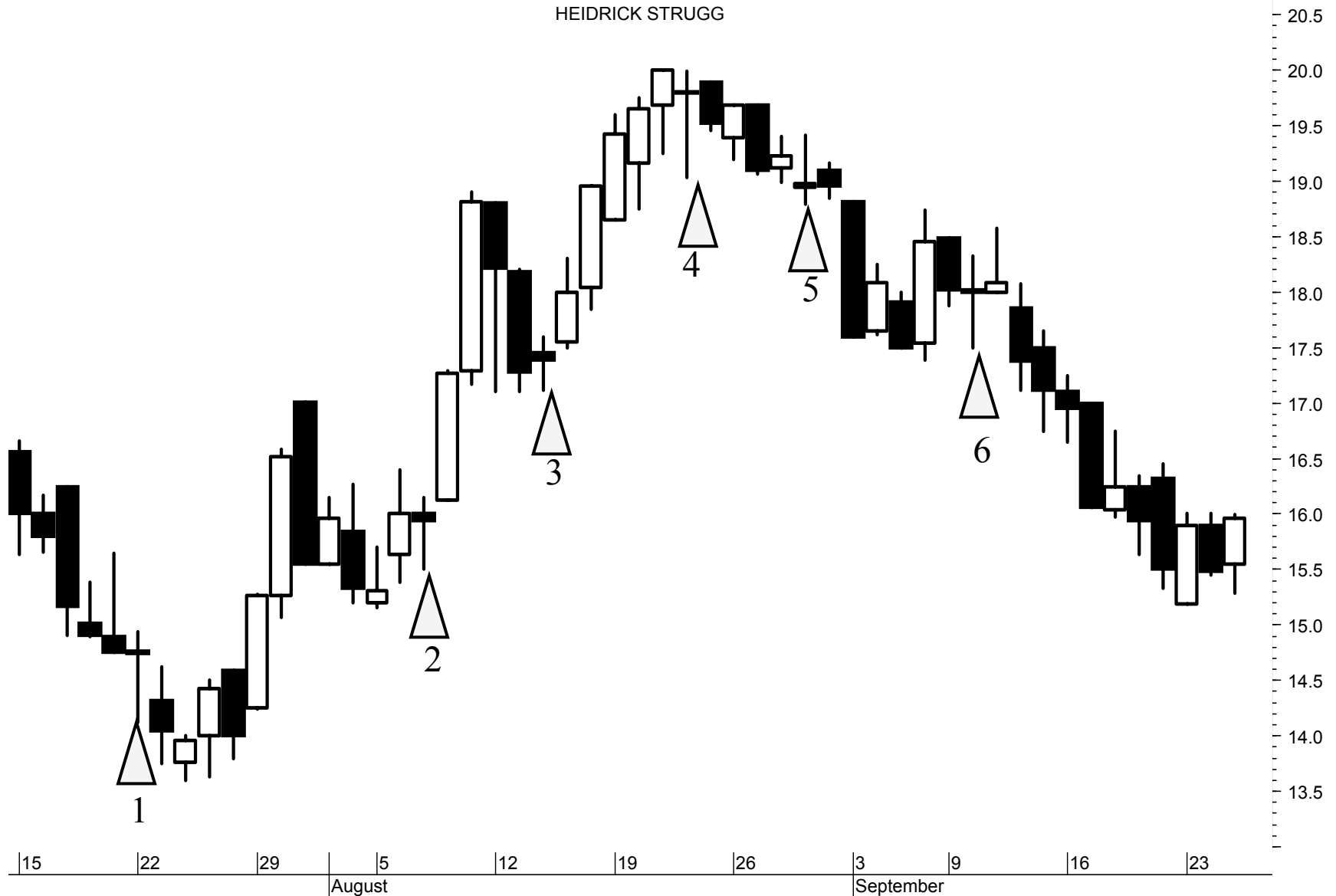
C-3 ☒



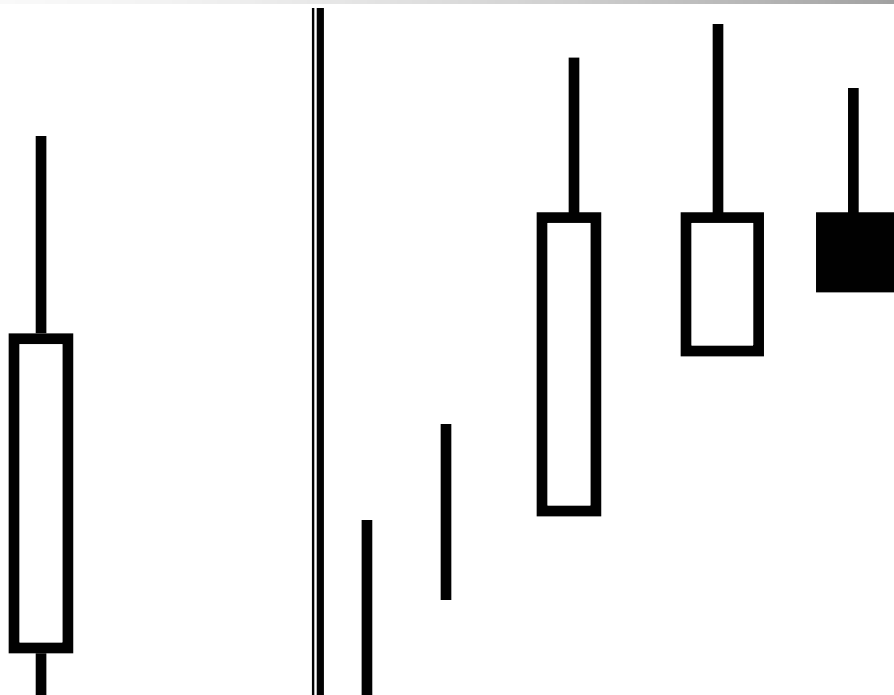
***Resistance
confirmed by
doji***

Doji Overview – Analyze Each Doji in Context of Trend

HEIDRICK STRUGG



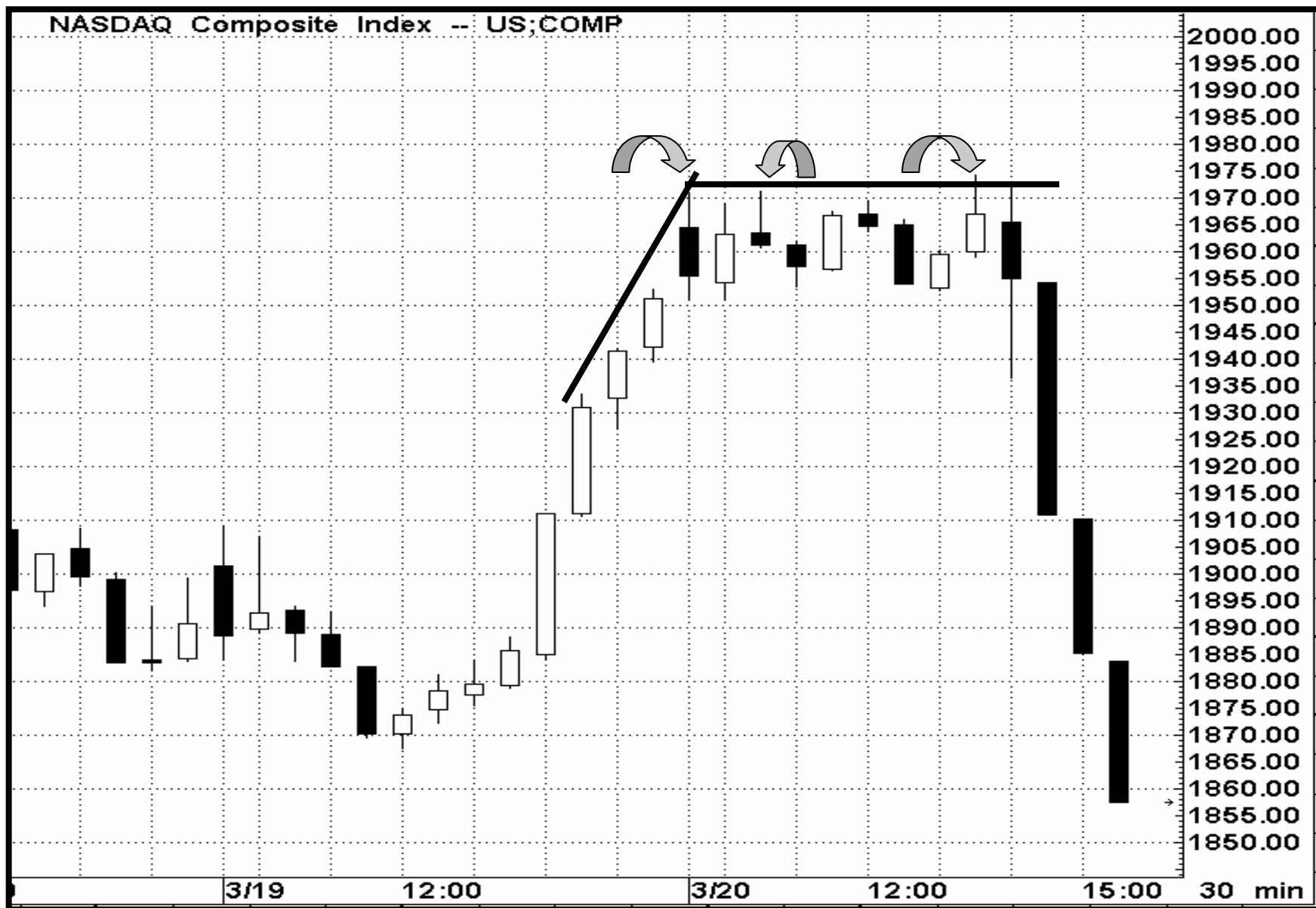
Shadows



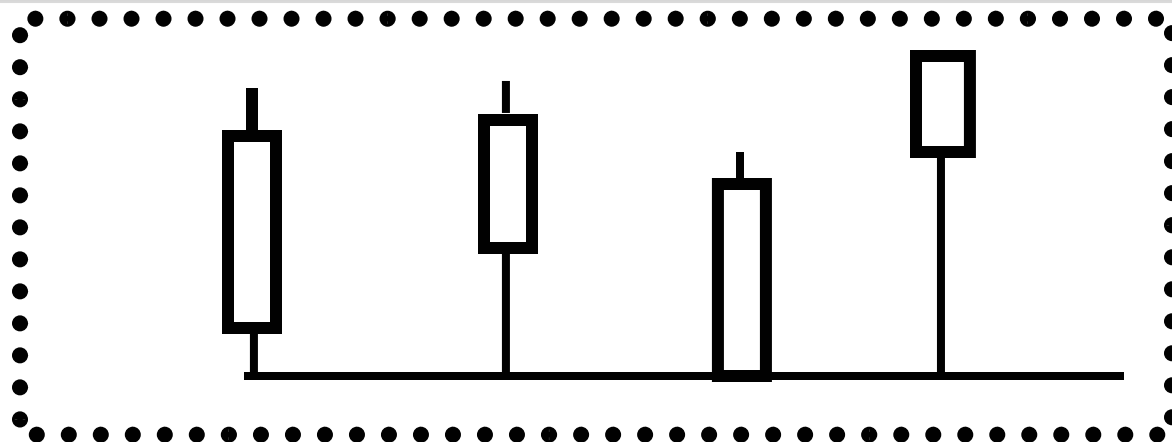
Remember: location and size of the shadow should be considered when analyzing the market psychology.

Implication: Bearish long upper shadow offsets “rallying strength.” Bullish long lower shadows hints bears losing force.

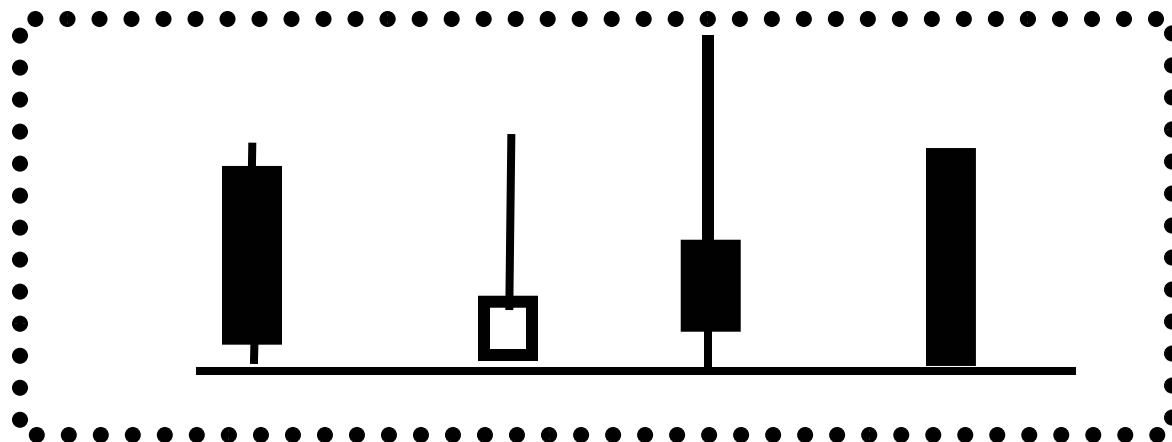
Upper Shadows and slope of advance



The Tools of the West with the Light of the Candles



**Scenario
1**



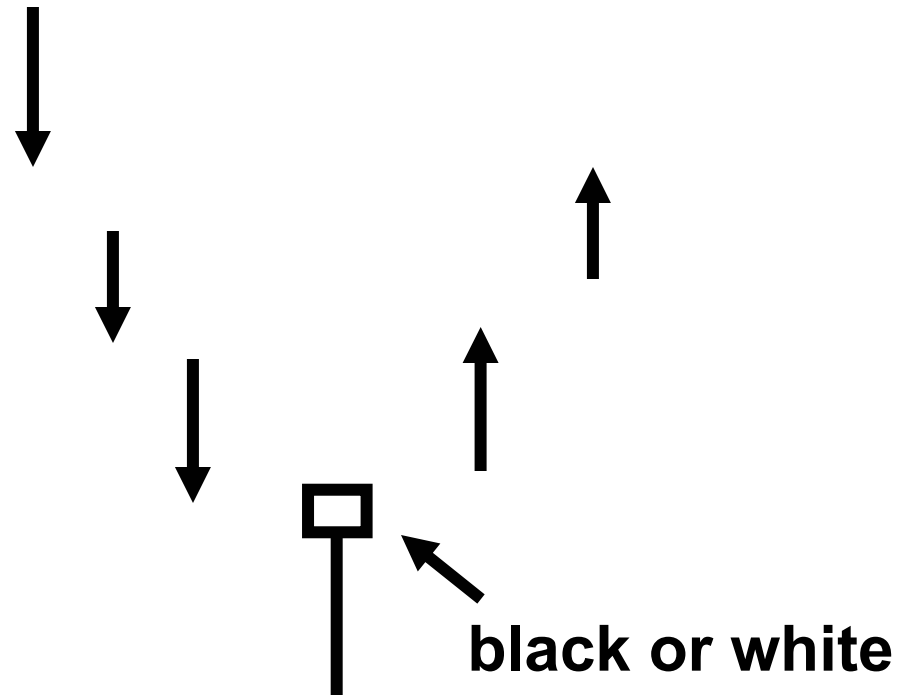
**Scenario
2**

Hammer

Criteria:

- Small real body at, or near top, of range
- Lower shadow at least 2x real body
- Market in down trend

Implication: ‘Groping for a bottom’

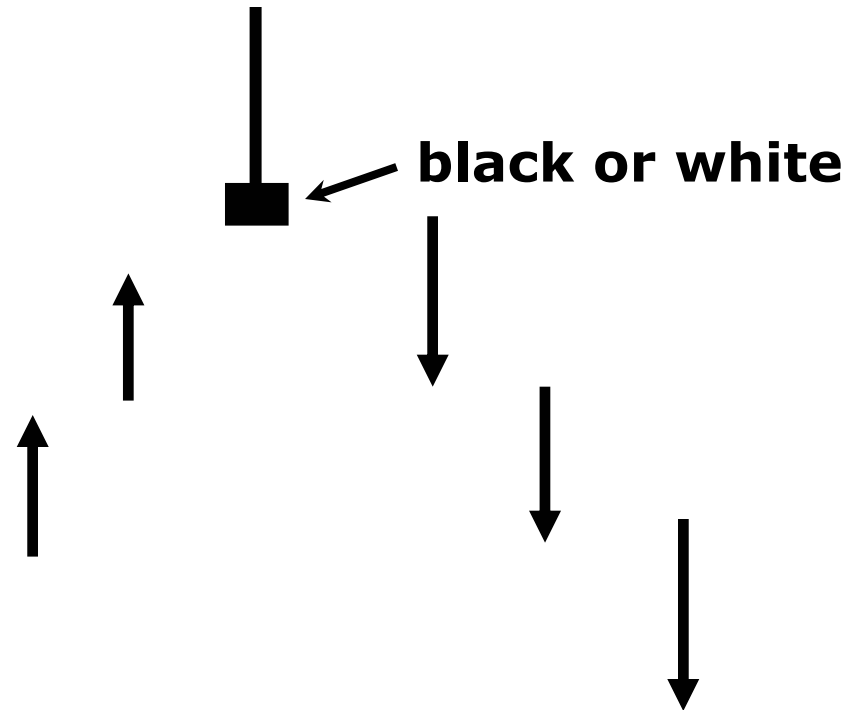


Shooting Star

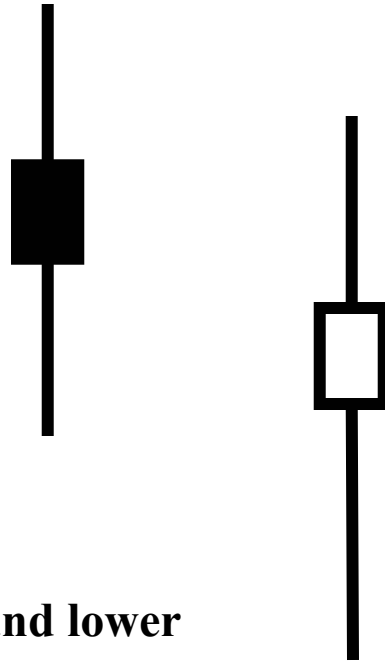
- **Criteria:**

- Small real body at, or near bottom, of range
- Upper shadow at least 2x real body
- Market in an up trend

- **Implication: ‘Signaling Trouble Overhead’**

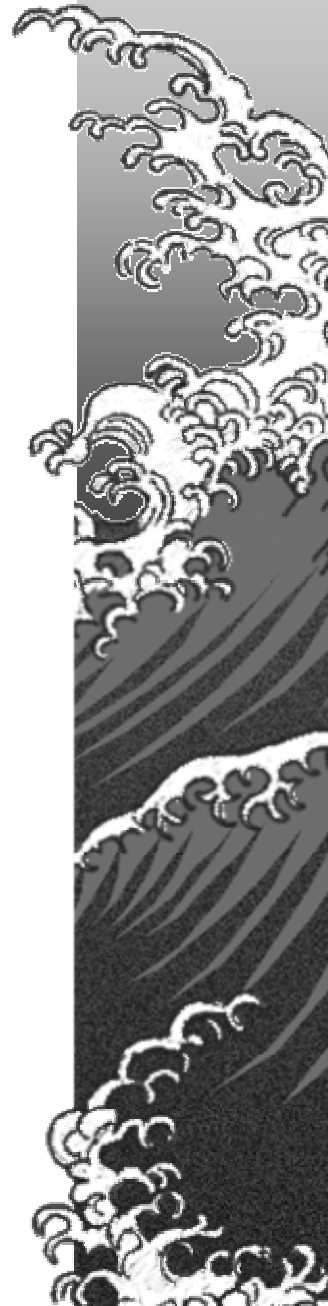


High Wave Candles

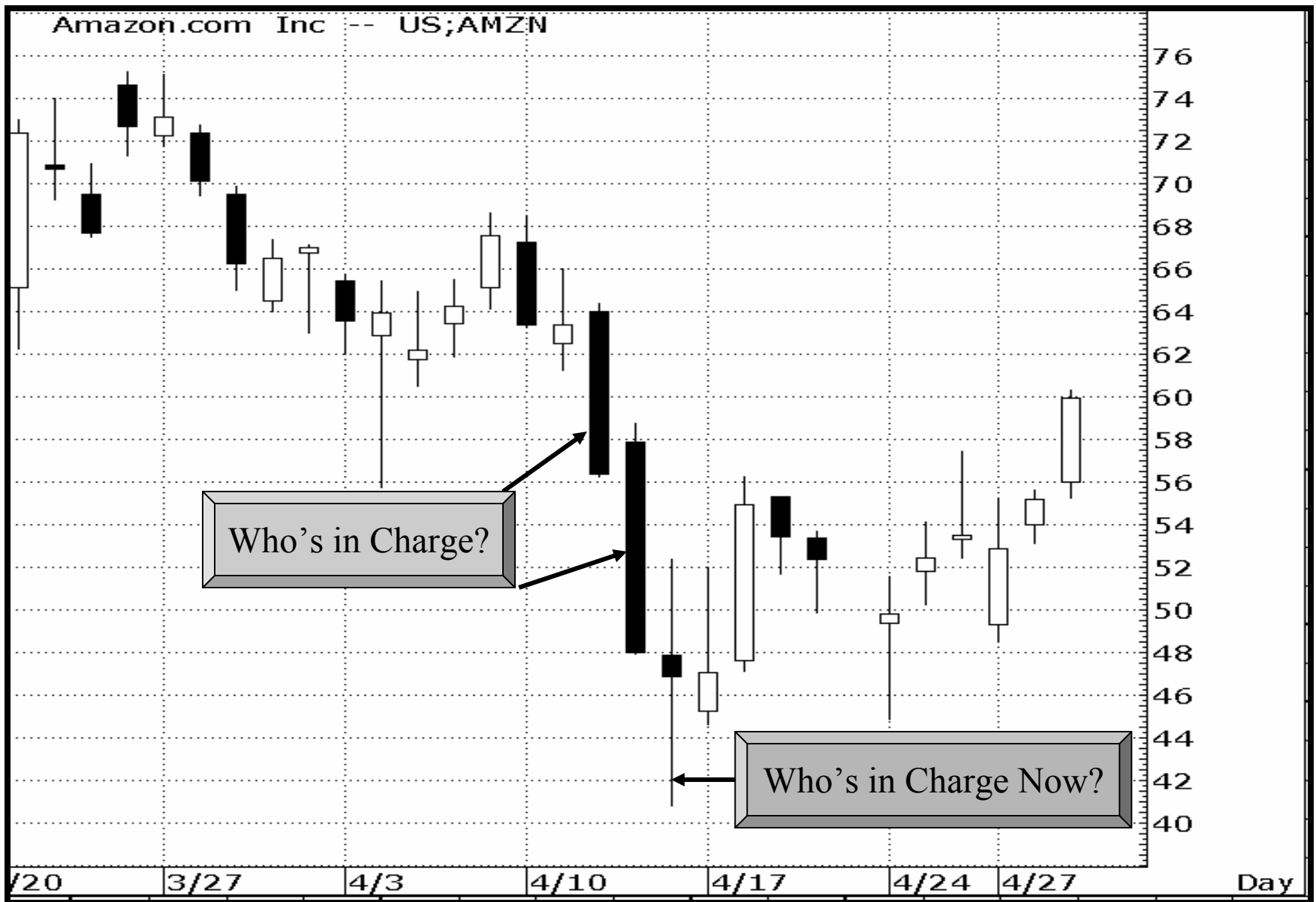


Criteria: very long shadows and lower small real body - color not important

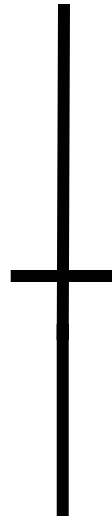
Implication: Trend is losing force



High Wave Candle



Long Legged Doji – “Rickshaw Man”



Criteria: very long shadows and lower small real body - color not important

Implication: “Market has lost it’s sense of direction”



High-wave candle

