

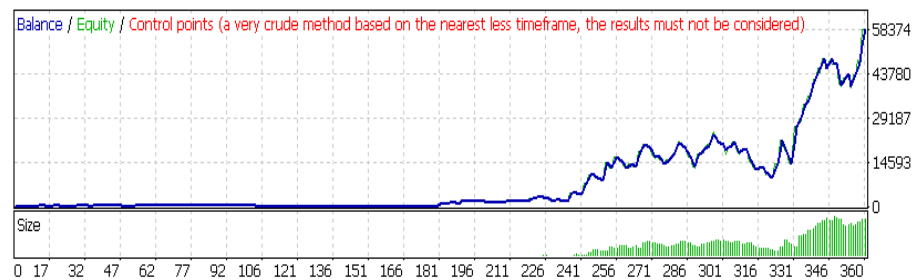
Robot (EA-ExpertAdvisor) Gold trading on M30 user guide Adwin1bE3 version.

1. Common principle: Adwin1bE3 is robots which trading rules based on technical analysis and risk management, but, it is still have a risk rate about 2%.
1. Timeframe – Cycling:
 2. Timeframe: M30 is standard timeframe for Adwin1bE3 robot. However, it also runs on others timeframe, but all of parameters are calculated based on M30. In this case, it has a bit different is that the orders will buy/sell earlier if we use it on timeframe which are smaller than M30 (e.g. M15,M1,M5) and it's also buy/sell less than and lower than if we use it on timeframe which are larger than M30 (e.g. H1)

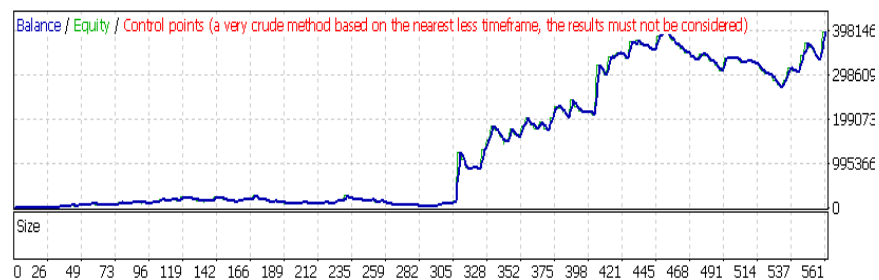
Cycling: Price and operating cycling of Robot is optimized calculation of relative parameters from a half end of 2012 to end of 2014. Out of this period, the Robot will be working, but it can be say that it is not perfect and it's also concern to the global finance crisis period is about 11.2 years.
2. Risk Management:

Capital Adequacy: Despite efficiency performance of Robot, it still has a risk rate as picture below.

i. Adwin1bE3: testing result on \$200 capital



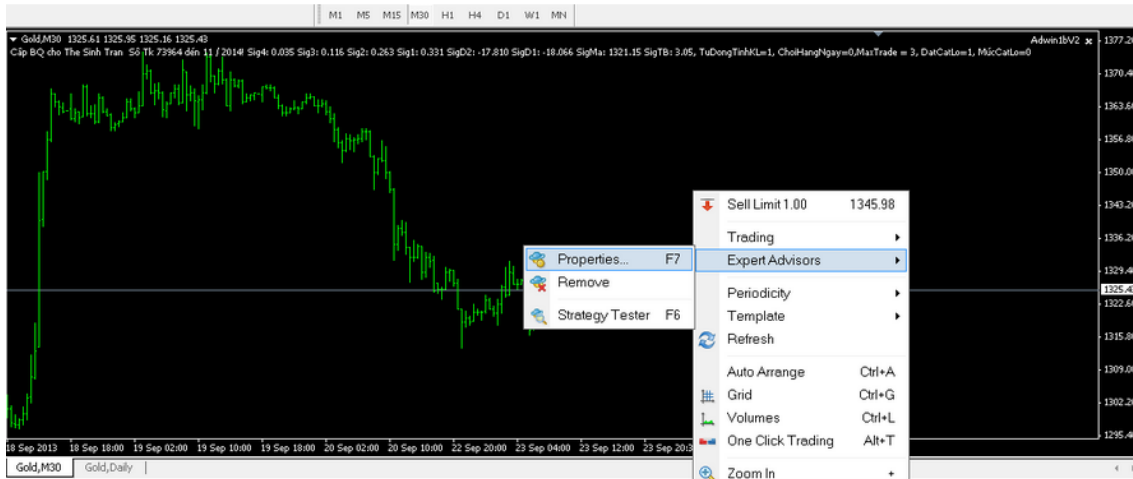
ii. Adwin1bV5: Testing result with \$10.000 capital and profit is nearly \$4.000.000



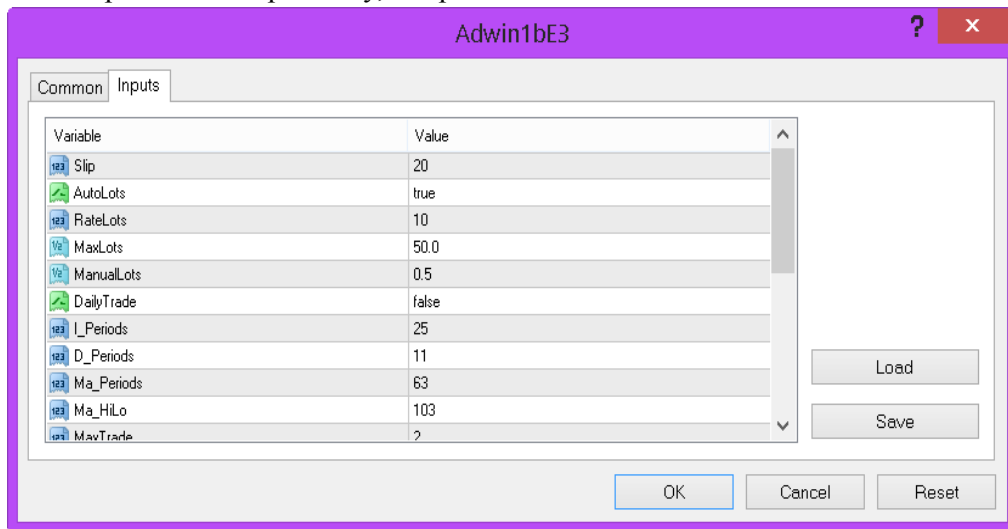
Robot place buy/sell orders based on bullish/bearish of technical analysis it's easy to see that the capital could be lost so much in sideway market. It could be lost fewer than 50% balance of trading account (it includes the capital and profit). For example, balance of Adwin1bV2 Robot reduces from \$4,000,000 to \$2,500,000. And the balance of AdwinTV1b Robot falls down from \$600,000 to nearly \$200,000. Similarly, balance of AdwinE3 Robot also loss in the sideway market but the rate of loss is under 40% is acceptable compared with Adwin1bV2 and AdwinTV1b. Consequently, AdwinE3 Robot is used public for everybody if you want to trade gold

on FX market. Besides, Adwin1bV4 and Adwin1bV5 robot have performance better than AdwinE3 robot but those are not public version.

Parameters configuration: Disable Expert Advisors on MT4 before configuration, then right click on window chart and choose Expert Advisors → properties or press (F7) as picture below.



Parameters configuration screen: double click on Value column on each record for each parameter respectively, see picture below



3. Some tips to reduce risk

- Withdraw cash from trading account if profit is over capital that was deposited at the first time. It means that robot will trade on profit.
- Change **DailyTrade** parameter = true in the period that sideways market happens on daily timeframe.



Hint: DailyTrade=false.

4. parameters configuration:

The parameter involved to volume: three parameters as below

- AutoLosses = true/false, default is true
- RateLots is integer number only, default is 10
- MANUALLOTS is acceptable decimal number, default is 0.5 (0.5 lot)
- If the AutoLosses = true and RateLots = 10 than MANUALLOST does not affect. Lot trade based on your balance in MT4 as soon as placing buy/sell, the balance includes capital and profit (deposit is \$1000 and profit is \$500 it means that balance is \$1500). We can set up to reduce risk on lot size for trading via RateLots parameter, if balance of your trading account is

\$10,000 than each lot size for each transaction is 0.1 lots (if your balance account is \$1,000 then lot size for each transaction is 0.01). In this case, if we set up RateLots = 10, it means that lot size for each transaction will be tenfold.

- If AutoLots = false, and RateLots = 10, in this case the RateLots parameter is ineffective because the AutoLots is false status. In the other hand, MANUALLOTS parameter will be effective (MANUALLOTS =0.05).

Hint: it should be used AutoLots=true and RateLots = 10.

Technical analysis parameters:

Variable	Value
I_Periods	25
D_Periods	11
Ma_Periods	63
Ma_HiLo	103
MaxTrade	2
TradeSideway	true
TrailingStop	false
OpStaTrailing	1
KTrailing	2.618
TradeAsianTime	true
PS_21	false

- I_periods parameter is integer number, over-one-period from 2013 to 2014 is 25, and this parameter can change to 26 end of October, 2013. This parameter is used for indicator, it is displayed on screen (Adwin1bE3) is Trend of Daily, TrendM30 or Sideway.
- D_Periods is integer number, this is parameter using for indicator, default value for this parameter is 11, and next period will be changed to 9. This parameter will be displayed on screen (Adwin1bE3) is OnlyBuy or OnlySell when you setup on DailyTrade = false.
- Ma_Periods parameter is integer number, this is parameter that uses for AdwinSign indicator and Ma indicator, these indicators help to reject Sideway status of market, if you want robot buy/sell order earlier then Ma indicator can adjust to 66 or 63, the default value of Adwin1bE3 is 63, and Adwin1bV2 is 66 (this value is smaller it will be difficult to place orders). This parameter is displayed on screen (Adwin1bE3) is sideways nearly Ma value if Robot discover that price is sideways status.
- Ma_HiLo parameter is integer number, it is using to calculate Stop Loss level automatically, shift Take profit level, and the default value is 103. This value can be change to others value to be suitable for each situation.

Hint: those parameter above should be used the value follow as: I_Periods=26 & D_Periods=9 , hoặc I_Periods=25& D_Periods=1, the others parameter are not important in this case.

Trading management & Risk management parameters

The screenshot shows a window titled 'Adwin1bE3' with a purple border. It has two tabs: 'Common' and 'Inputs'. The 'Inputs' tab is active, displaying a table of parameters and their values. To the right of the table are 'Load' and 'Save' buttons. At the bottom are 'OK', 'Cancel', and 'Reset' buttons.

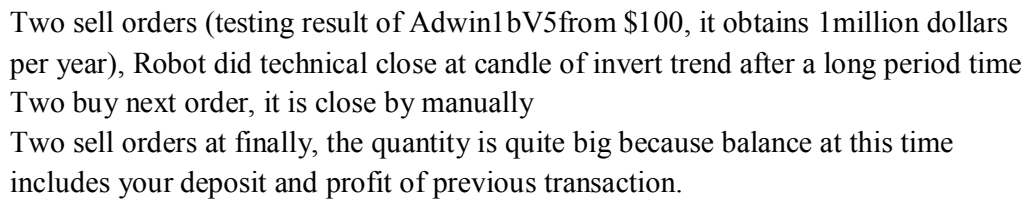
Variable	Value
MaxTrade	2
TradeSideway	true
TrailingStop	false
OpStaTrailing	1
KTrailing	2.618
TradeAsianTime	true
PSar	false
AutoPutStoploss	true
MoveStoplossToOpen	true
ManualPipStop	0
PrintSC	true

- Maxtrade parameter is integer number, the default value is 2. This parameter to manage how many orders will be generated by Robot. If Maxtrade =2 then Robot will be generated 2 orders. In case, you want to attack to take high profit and accept your balance account can be zero we can setup maxtrade and RateLots are 255,2 respectively (Maxtrade = 255, RateLots =2)
- Slip parameter

The screenshot shows an 'Instant Execution' window. At the top, it displays 'Symbol: XAUUSD, Gold' and 'Volume: 0.18'. Below these are 'Stop Loss: 0.00' and 'Take Profit: 0.00'. A 'Comment:' field is empty. The 'Type:' is set to 'Instant Execution'. The main display shows the price '1255.46 / 1255.63'. There are 'Sell' and 'Buy' buttons. At the bottom, there is a checkbox labeled 'Enable maximum deviation from quoted price' which is checked. Below this checkbox is a field for 'Maximum deviation: 10 pips'.

- Rule of maximum pip of price when orders were generate, the default value is 20. However, in the extremely strong trend which orders could not execute (Robot will capture error status)

- TrailingStop parameter is true/false, the default value is false. This parameter to shift TrailingStop with $\text{SigTB} \times 2.2$, if profit is over $2.2 \times \text{SigTB}$ then Robot will shift Stop Loss level to protect profit. In long term testing, the Trailingstop = false should be used to take the best profit. But in sideways status the TrailingStop = true is good to protect your profit.
Hint: TrailingStop = true before you go to sleep and change back to false value after wake-up
- OpStartTrailing = 1 is parameter which is using to start up orders run Trailingstop follow as Trailingstop = true
- TradeAsianTime = true parameter will allow to open orders in the Asia time, in contrast, Robot will trade on European time and American time, it appropriates for GMT from 4:00 to 20:00.
- Psar parameter allows changing long term trend as soon as StopLoss:
- AutoPutStopLoss = true allow Robot setup StopLoss level, this value is calculated equal $2.2 \times \text{SigTB}$ if ManualPipStop = 0, and ManualPipSop parameter is parameter can customize by users
- ManualPipSop parameter allows setting up StopLoss level by users, for example: if you buy gold at 1400 then Stoploss level will be at $1400 - 6 = 1334$ with your setting up ManualPipSop = 600, and StopLoss level is $1400 - 7 = 1333$ with your setting up ManualPipSop = 700. In this case the AutoPutStopLoss = true (this is prerequisite condition which effect to ManualPipSop parameter)
- MoveStoplossToopen parameter will move StopLoss level to new level of price which its price is over executed price to protect your trading result is always gain, if in the strong trend of market then orders will close based in technical calculation, sometimes the order is gain but it will be loss as soon as close by technical calculation. MoveStopLossToopen parameter helps to limit loss by technical close.
- PrintSC = true is parameter to capture screen with resolution 1366x768, if you want to change resolution then contact Adwin. All of pictures is store In directory path of MT4 (Mt4\Expert\files) for real account or (Mt4\Expert\tester\files) for testing account.
- Ability of acceptable gain: People are often accepting profit less than loss. As experiment, when Robot catches up with strong trend of market, you can manual close order after finishing strong bullish/bearish candle. But it should be waited until the candle of invert trend is closed, please see picture below to see detail



In conclusion, Preparing to become millionaire or higher then you can obtain profit as testing result.

Adwin.

In conclusion, Preparing to become millionaire or higher then you can obtain profit as testing result.

Adwin.