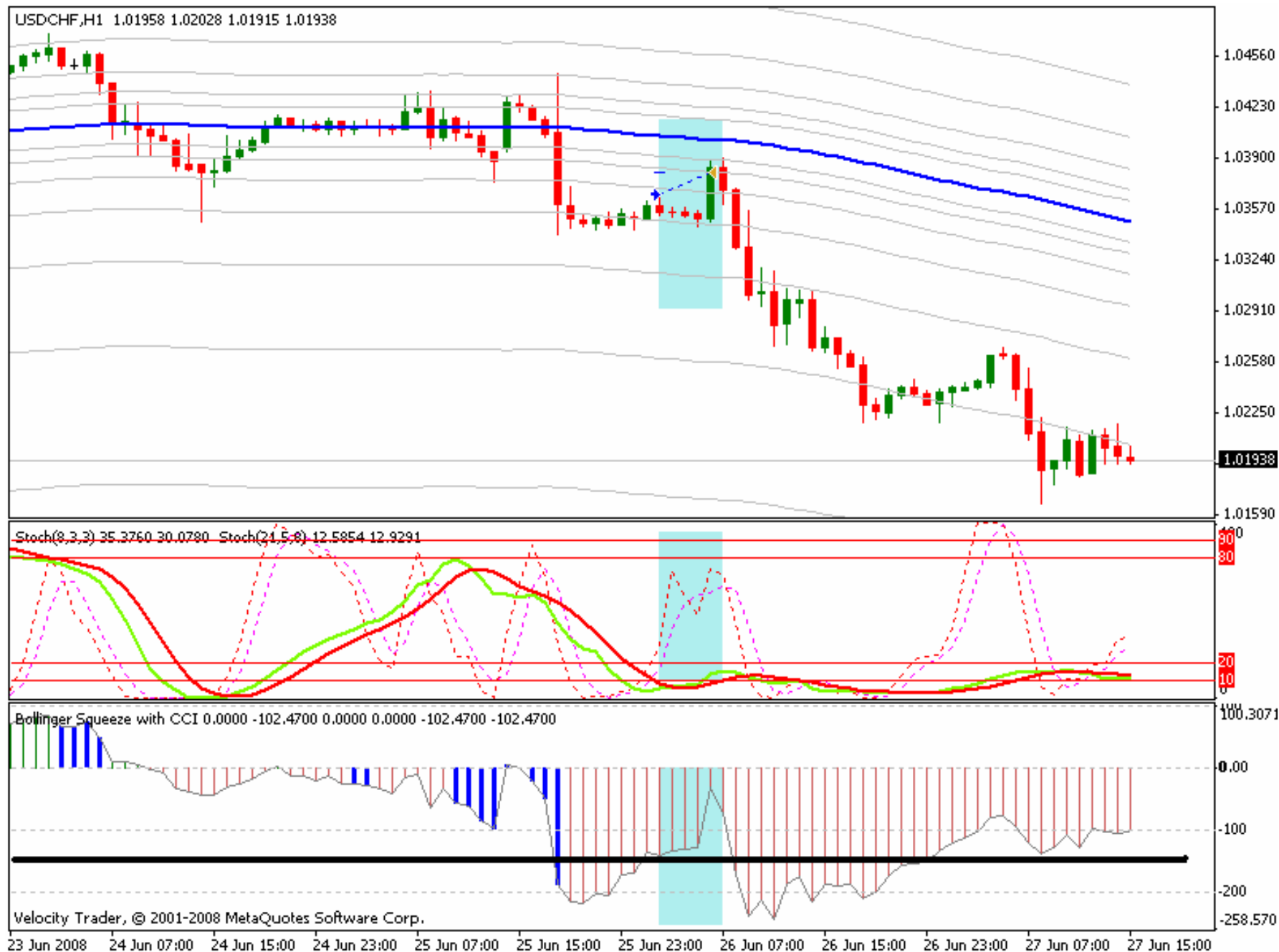


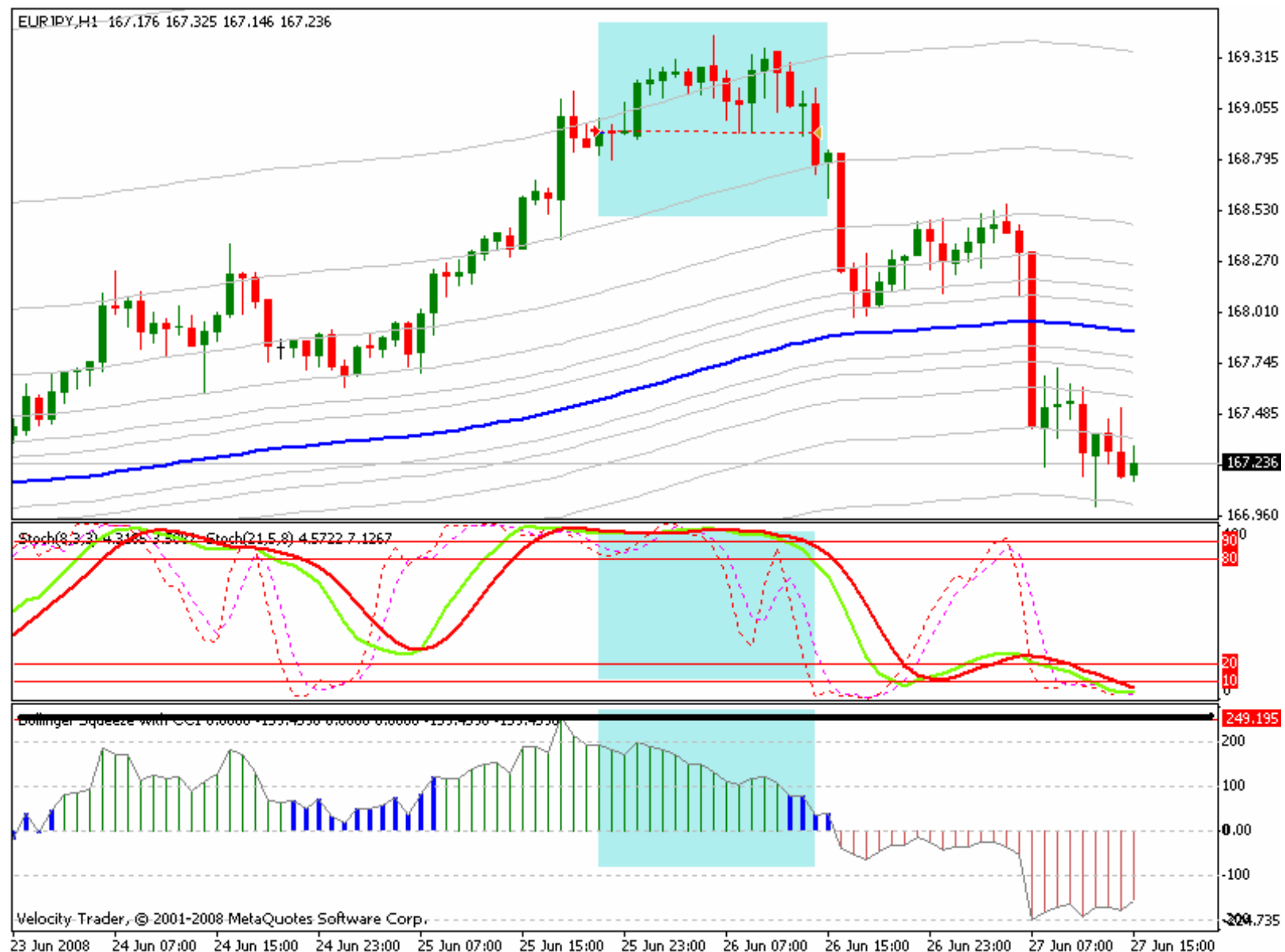
**USDCHF LONG : +20 PIPS**

**CCI followed price going up. Easy pips.**



**USDCHF LONG : +17 PIPS**

**CCI followed price going up. Easy pips.**



### EURJPY SHORT – BREAKEVEN

**This has been so far my toughest trade. But you can see that the CCI never broke the most recent high. In fact, even though price was rising, the CC kept falling. A perfect example where I should have stayed in the trade with confidence.**