

## Quick Installation Guide

### I. METATRADER INSTALLATION.

### II. TRADING STRATEGY INSTALLATION.

#### 1. MetaTrader Platform Installation.

Just run MetaTrader Setup executable file (generally **mtsetup.exe**) and follow MetaTrader Setup Instructions. Program installation is not complicated. For all the questions just answer **Next**, **Yes** or **Ok**.

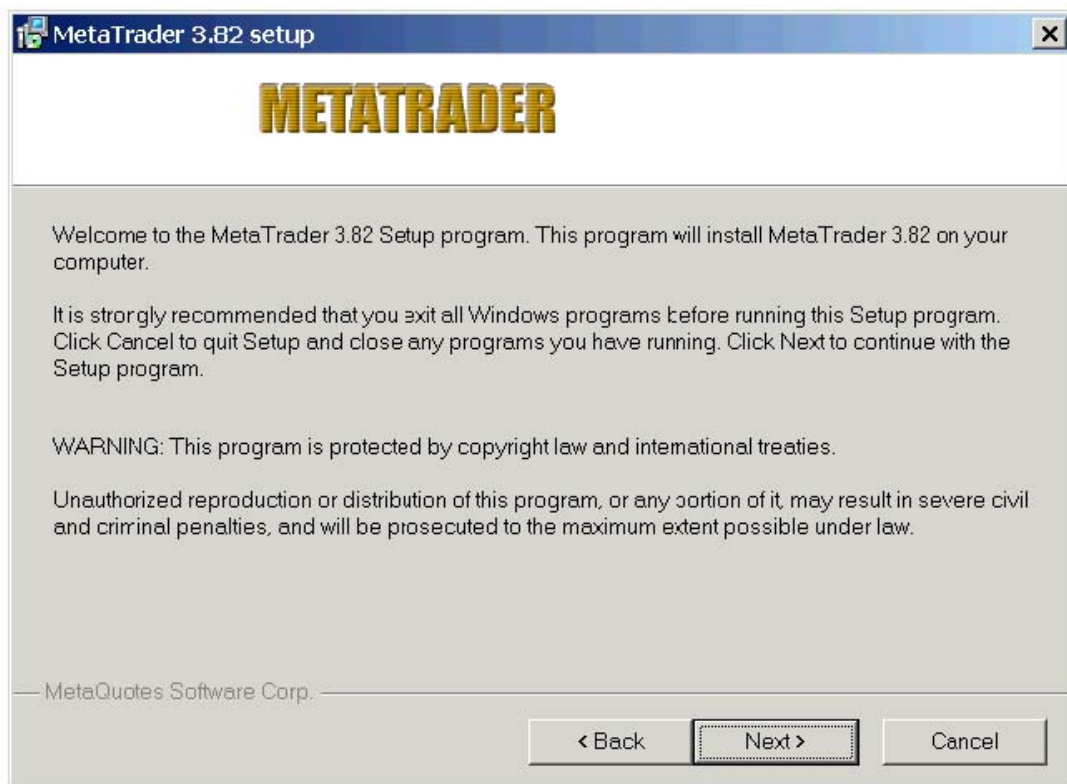


Image 1. Click 'Next' Button

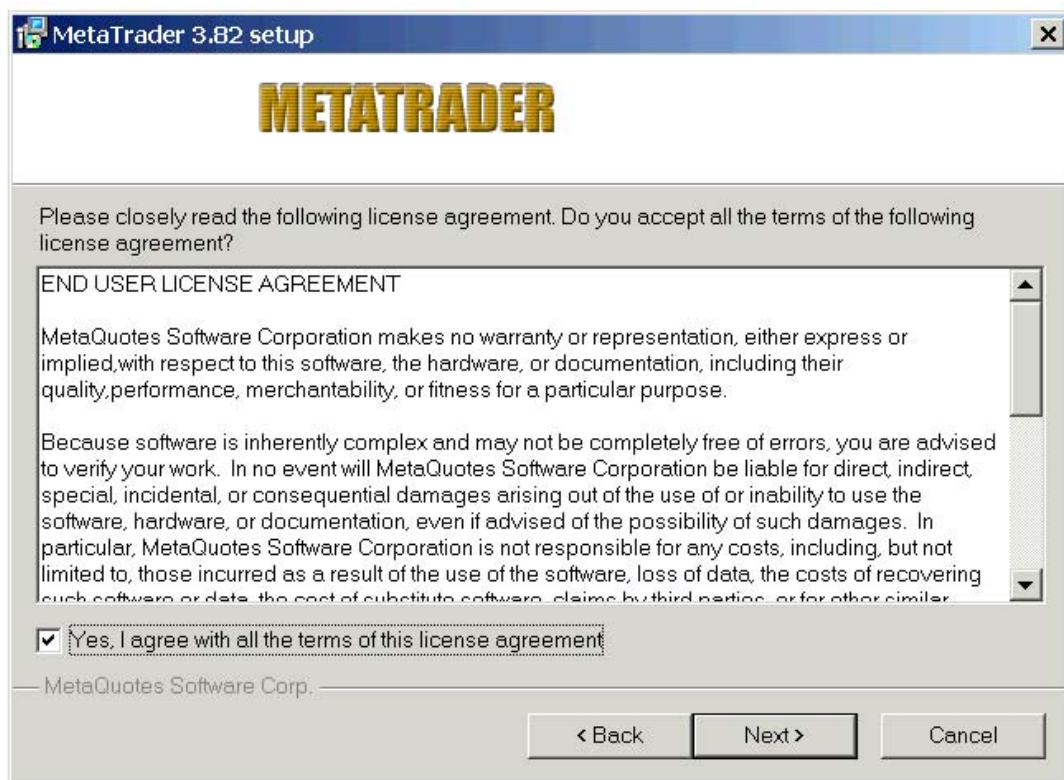


Image 2. Click CheckBox 'Yes, I agree with all the terms of this license agreement' and 'Next' Button

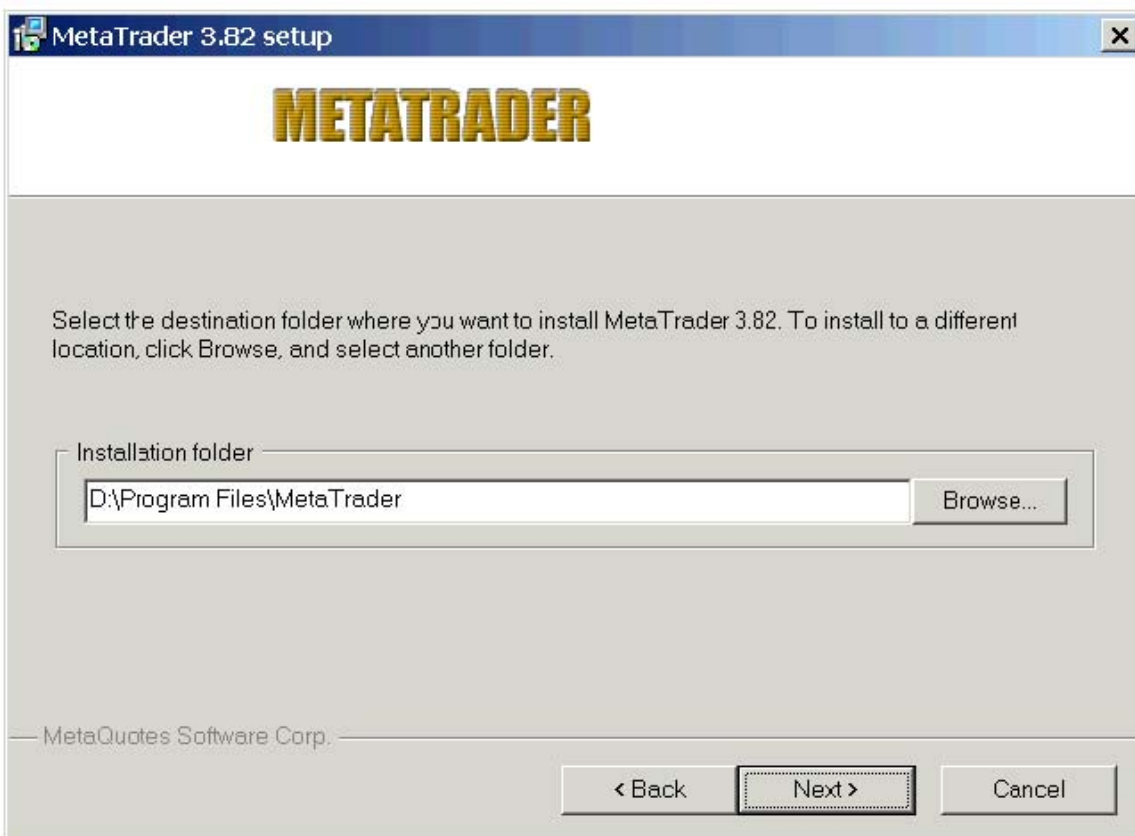


Image 3. You may change Installation Folder and click 'Next' Button



Image 4. Click 'Next' Button

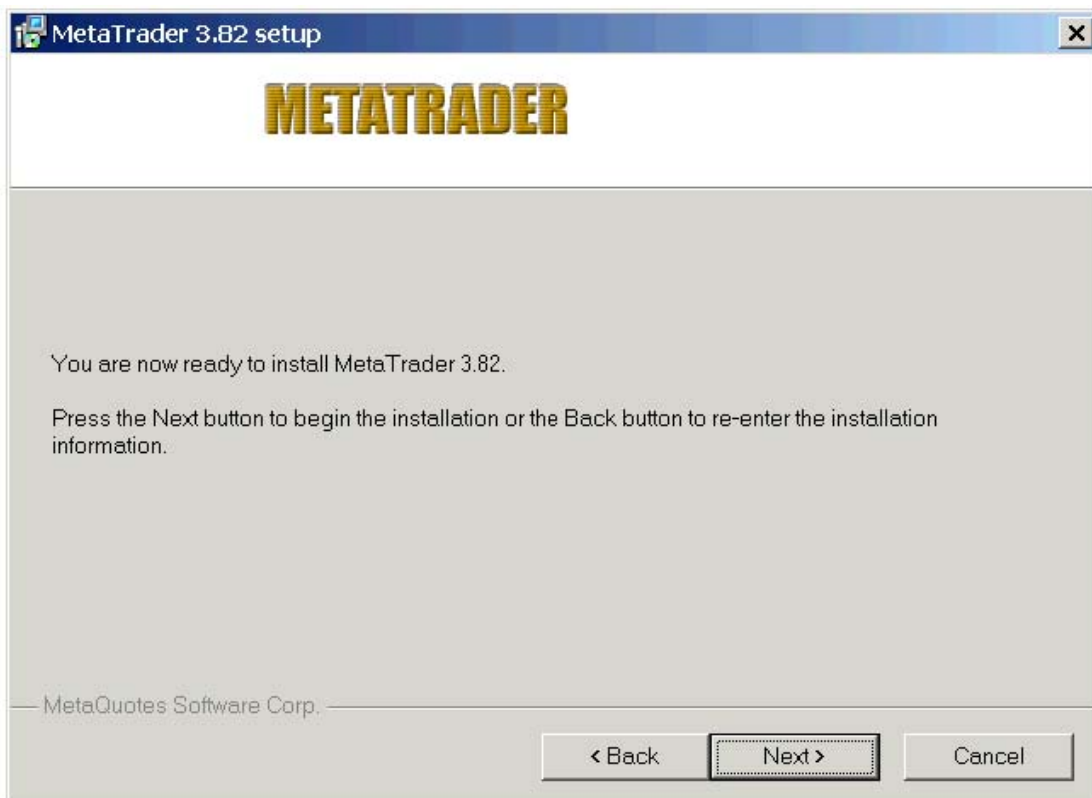


Image 5. Click 'Next' Button

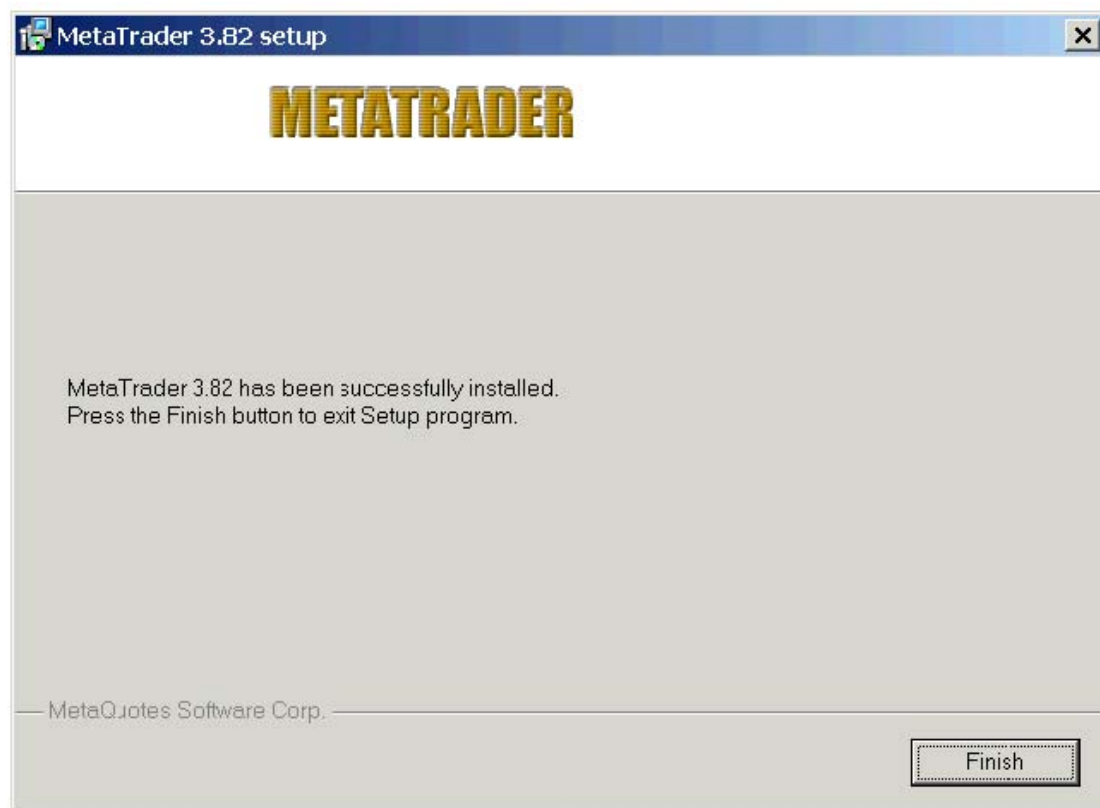


Image 6. Click 'Finish' Button

You may find now MetaTrader icon at your desktop and in Start menu / Metatrader folder.

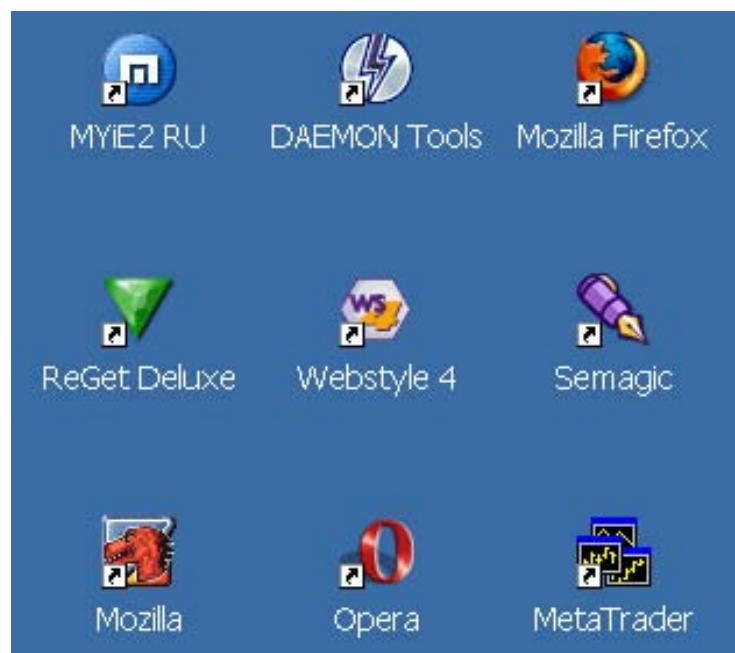


Image 7. MetaTrader Icon

## 2. Open DEMO ACCOUNT with MetaTrader Platform.

Run MetaTrader Platform double-clicking on MetaTrader Icon.

Starting the program, there will appear an invitation on your screen to register demo account.



Image 8. Open DEMO Account dialog

Some fields will show you the minimal required amount of symbols to be entered. In the field Leverage is necessary to indicate the bank shoulder (1:100 для FOREX), in the field Deposit choose DEMO deposit. After filling out all the required fields, press Register. If all the network settings are correct and you are connected to the network, you will see all your information on your demo account: your name, the one that you put in the field Name, demo account number and password. If you don't want to receive emails from broker you don't need to enter YOUR REAL EMAIL in Email field. Simple enter not-existing email.

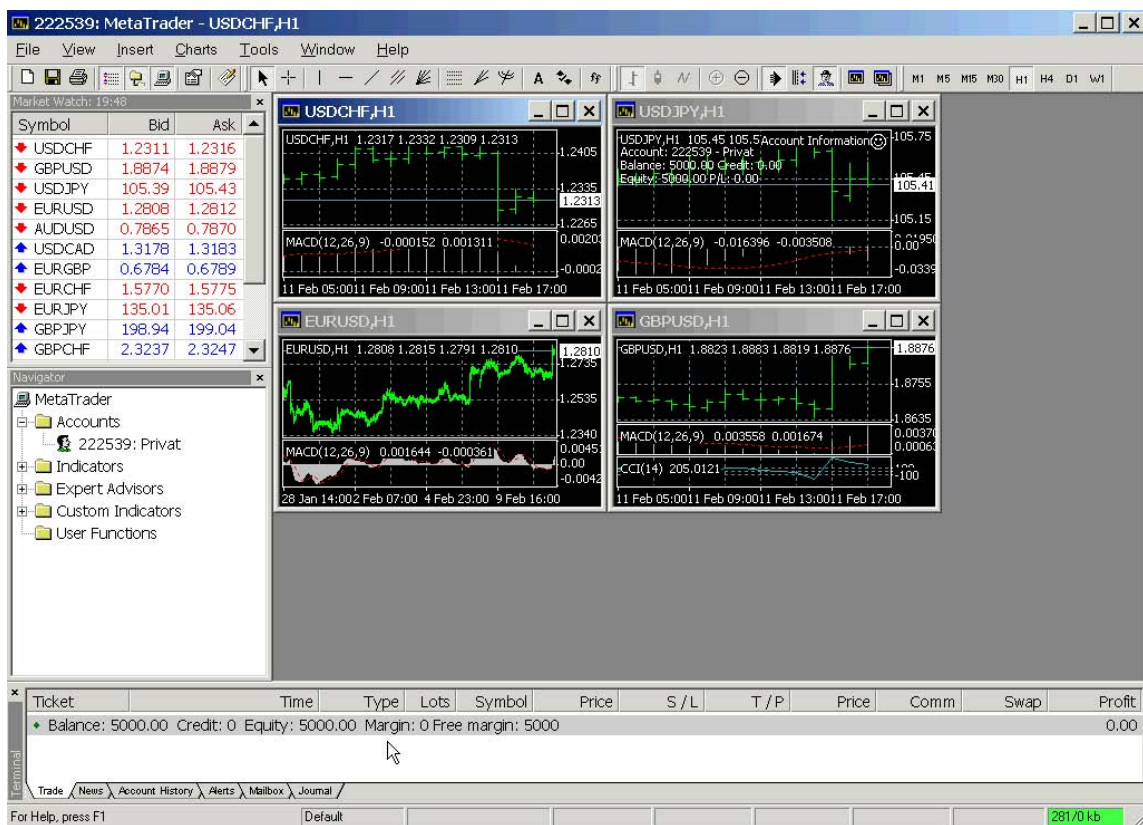
### Notes for users sitting behind a firewall or a proxy server:

If you access MetaTrader from your work place, it is highly likely that you are connected to the Internet through firewall or proxy server. In this case, try to switch on the option to work through SOCKS5 or HTTP proxy servers, using the program set up **Tools->Options->Server->Proxy**. In case of troubles, ask your system administrator to open port 1950 or set up the port mapping to get access into the trading server.

You may Open Demo Account anytime in future simple using the program set up menu Tools->Options->'Open an account' button.

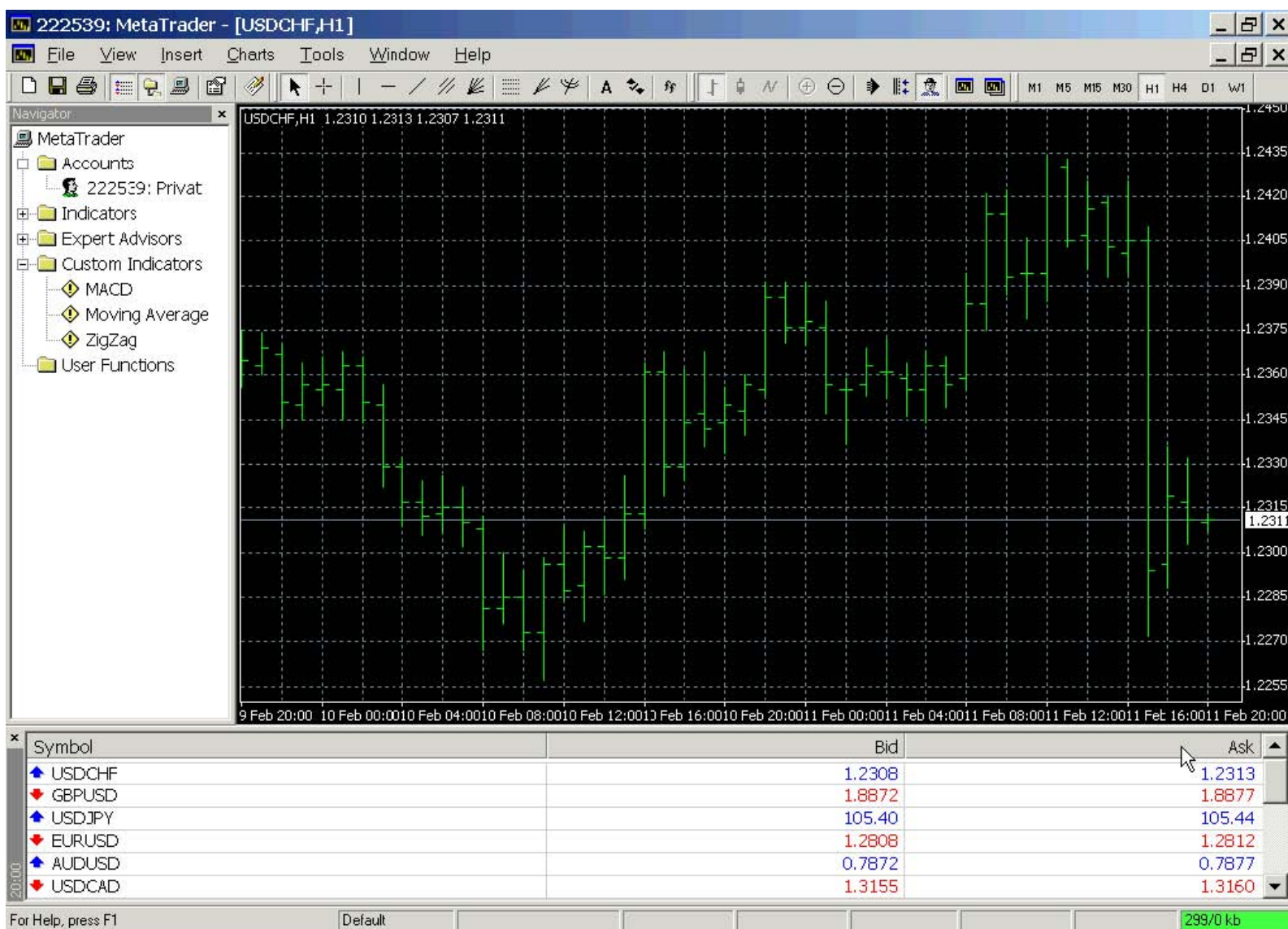
### 3. Set Up your MetaTrader Desktop as you want.

When You load MetaTrader first time You will have next picture:



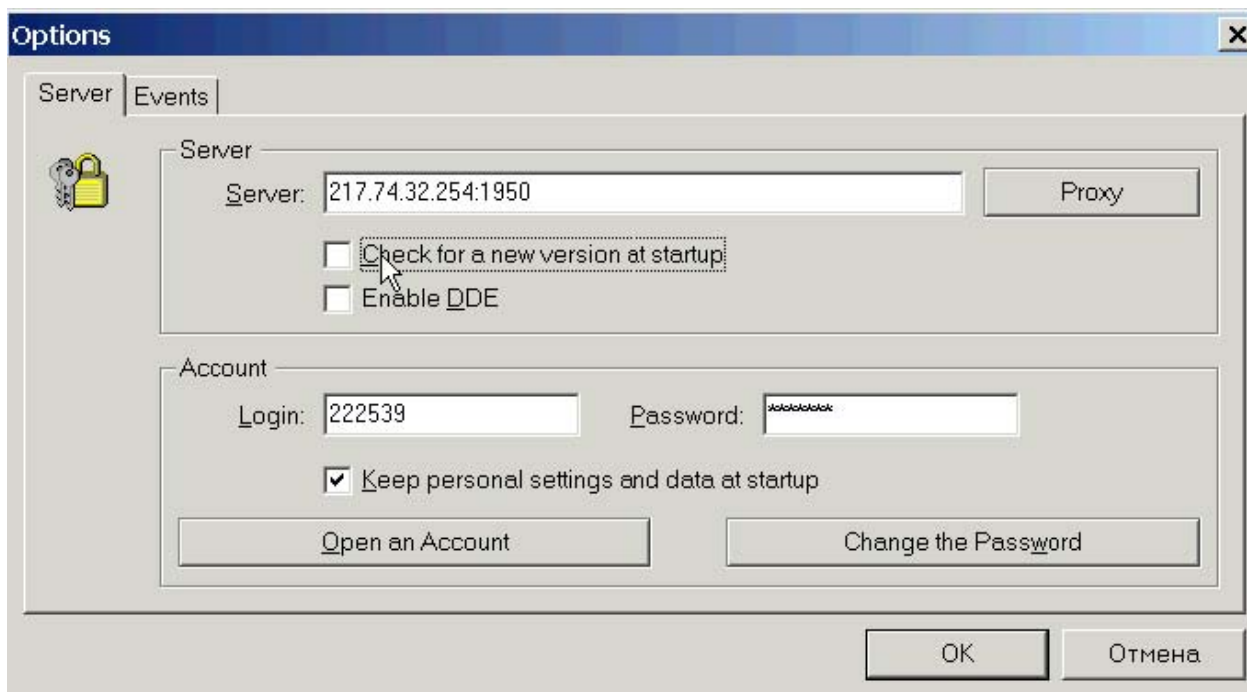
You may customize your MetaTrader appearance as you want. For Example, I prefer such appearance:





#### 4. MetaTrader LiveUpdate disabling.

Start MetaTrader. Choose menu **Tools->Options**. **UNCHECK** 'Check for a new version at startup' checkbox.



## I. Trading Strategy Installation

### I. Getting Started

#### A. Requirements To Run the System

##### Computer with Minimum Requirements:

Intel compatible 500 MHz CPU computer

64 MB RAM

10 MB free hard disk space

Win95/Win98/WinNT/Win2000/Win2003Server/WinXP

Platform Requirements: MetaTrader by MetaQuotes Software Corp.

#### B. Getting Familiar with Your Platform



Before install the System, please make sure that Windows, MetaTrader are installed and running properly and you are familiar with the following topics:

1. Installing new indicators.
2. New "Chart Window" setup.
3. Receiving real time data.
4. Inserting indicators to a chart
5. Formatting indicators

The above six topics are basic and essential for using MetaTrader and the System. If you have any questions about these issues, please read the MetaTrader help or call **MetaQuotes Software Corp. technical support lines**. MetaQuotes Software Corp. also provides on-line support at <http://www.metaquotes.net/contact.htm>

## II. Installation Procedures

MAKE A BACKUP OF THE PACKAGE BEFORE START WORKING!!!  
MAKE A BACKUP OF THE PACKAGE BEFORE START WORKING!!!  
MAKE A BACKUP OF THE PACKAGE BEFORE START WORKING!!!

1. Open with winrar ([www.winrar.com](http://www.winrar.com)) the package of the Trading System purchased, and extract that in a folder you can easily find (ie. extract to Desktop)
2. Locate inside that the folder named "Indicators", here you can find all the indicators forming the Trading System. They are named .ml4 or .ex4 . Ml4 files are open-source and you can edit them in metatrader, ex4 are pre-compiled files. It depends from wich Trading System you've purchased if indicators are .ml4 or .ex4, or both.
3. Copy all them to the corresponding folder named "indicators" inside "experts" folder wich you can find in the folder directory where you've installed your copy of Metatrader Client Terminal (Default: C:\Programs\Metatrader\experts\indicators)

ALL the indicators MUST be on this folder (REPEAT: .\experts\indicators inside your Metatrader installation directory) or the Trading System will not work.

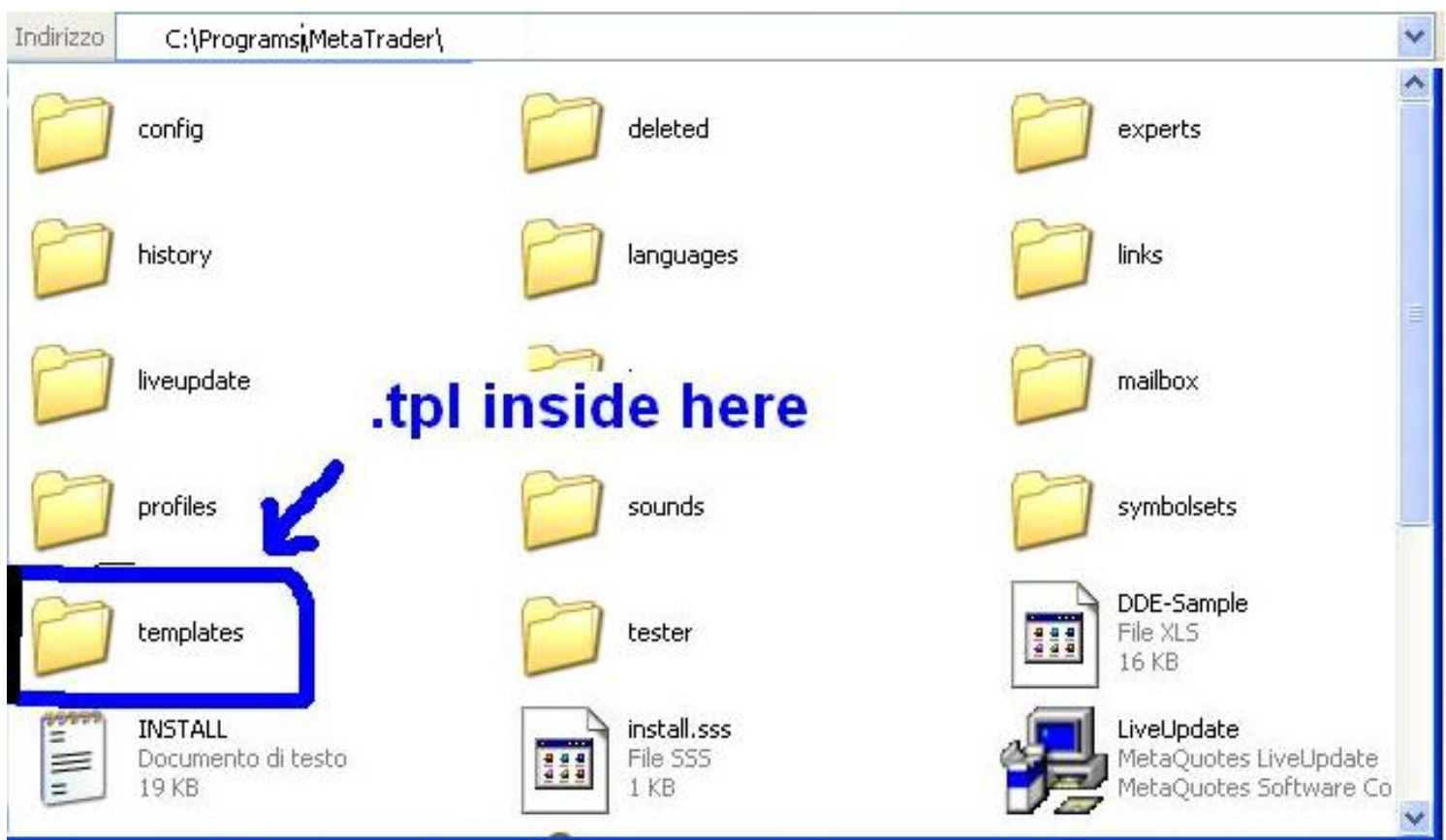


4. Locate inside the folder where you have extracted your purchased Trading System the folder named "Template". Here you can find a file with the same name of the Trading System purchased, with extension .tpl.

This is the Template of the System which will allow you to see in Metatrader charts all the indicators as shown in the manual. In the future, you can obviously modify this file as you like.

5. Copy this file .tpl to the corresponding folder named "templates" which you can find in the folder directory where you've installed your copy of Metatrader Client Terminal (Default: C:\\Programs\\Metatrader\\templates)

**IMPORTANT:** inside the folder "\\experts" your Metatrader installation directory you can find another folder called "\\templates", but don't care about that! ALL the .tpl files provided in the Trading System MUST be on folder "\\templates" that you can find in the MAIN folder where you've installed your copy of Metatrader Client Terminal (Default: C:\\Programs\\Metatrader)



ALL DONE! EASY JOB, ISN'T IT?

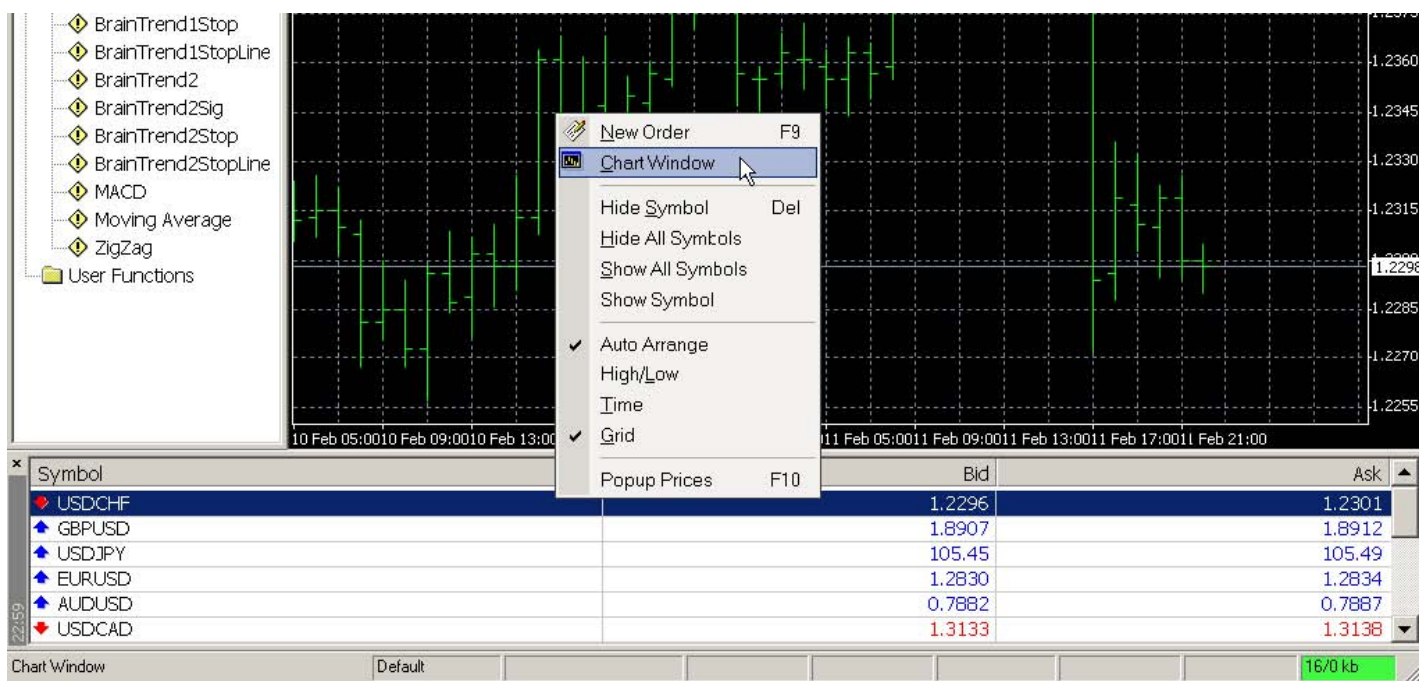
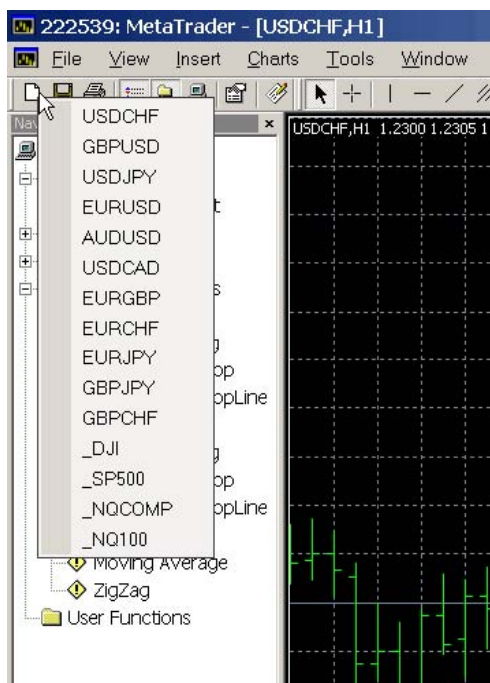
Now you can run Metatrader Client Terminal, open a new chart with the Trading System Template as shown below, and enjoy trading!

### III. Setup Procedures

Following topics are designed to help you for a quick start. By no means they can replace the MetaTrader Users' Manual or their online help. If you have further questions, you may refer to MetaTrader help.

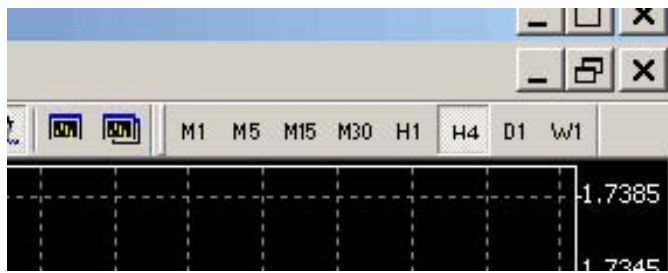
#### 1. How to open a chart.

To create a new chart press the button **New** on the main panel (or click the main menu **File --> New Chart**) and choose the right currency. Or click with a right mouse key in the **Market Watch** window on necessary instrument and pick **Chart Window**:



## 2. How to change Chart Time Interval.

MetaTrader has several periodical chart formats: M1, M5, M15, M30, H1, H4, D1, W1. You can switch from one to another by clicking buttons on the panel, through the menu **Charts -> Periodicity** or by clicking on the proper chart with a right button and choosing in the menu Periodicity.



### 3. How to change from one instrument to another.

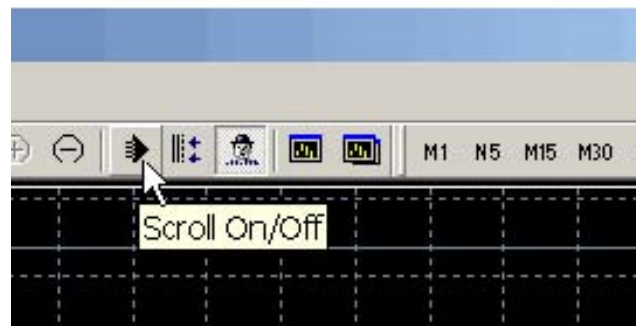
To change from one currency pair chart to another, click on the desired instrument at Market Watch tool bar and drag to the chart window.

### 4. How to change Type of chart.

To switch the type of the chart (Candlesticks, Bar charts or Line chart) use buttons on the main panel, menu **Charts** or by clicking **Alt+1**, **Alt+2**, **Alt+3**.

### 5. How to enable/disable automatic Scroll of chart.

Check/Uncheck 'Scroll On/Off' button at main panel:



### 6. Zooming and scrolling and Constriction/Widening

To change zoom scale use the buttons on the panel, menu Charts or by clicking grey buttons + и -. For a smooth scrolling press F12 key.

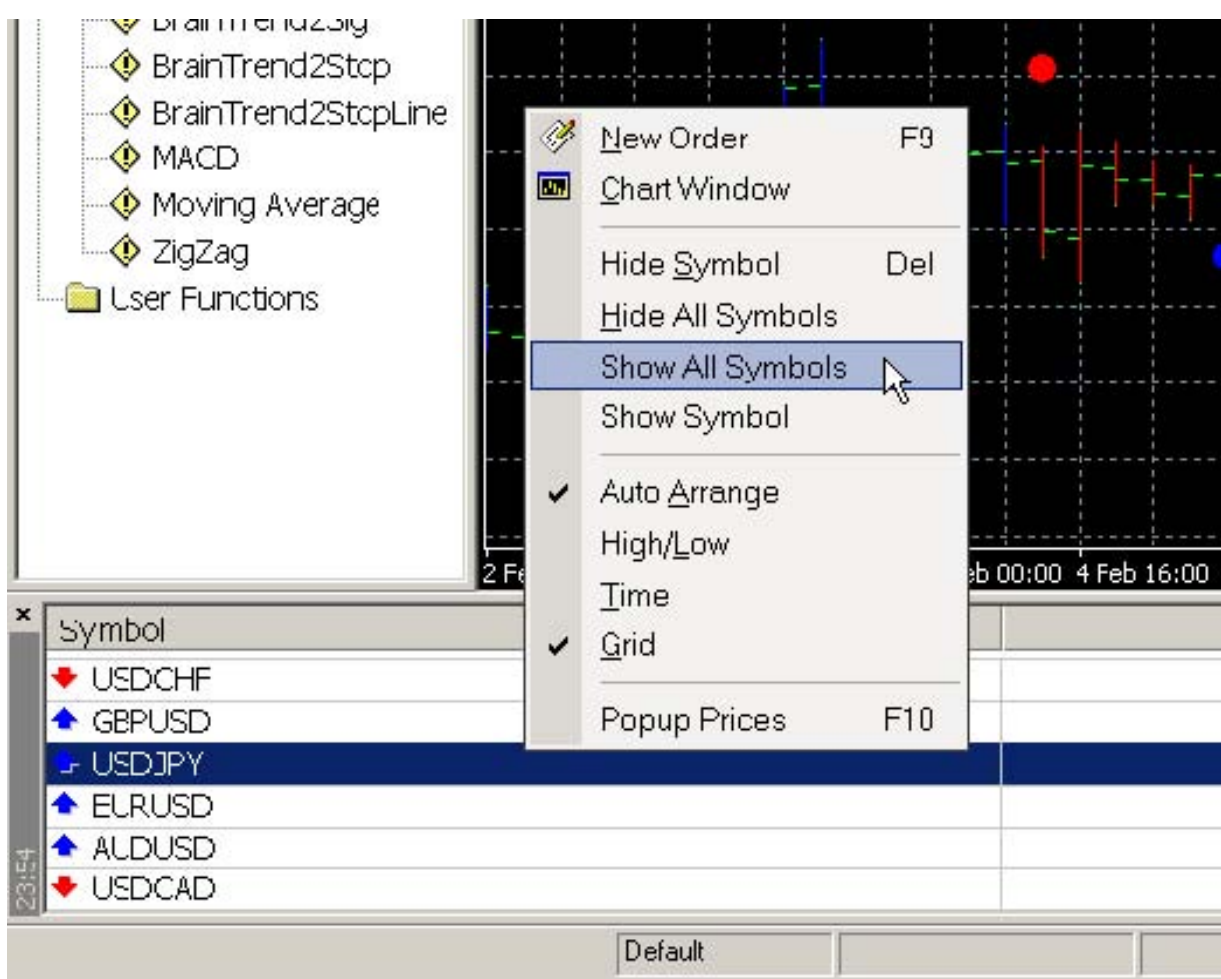
To Constriction/Widening up and down click mouse left button on Price axis and move mouse up or down.





7. How to show all available trading instruments.

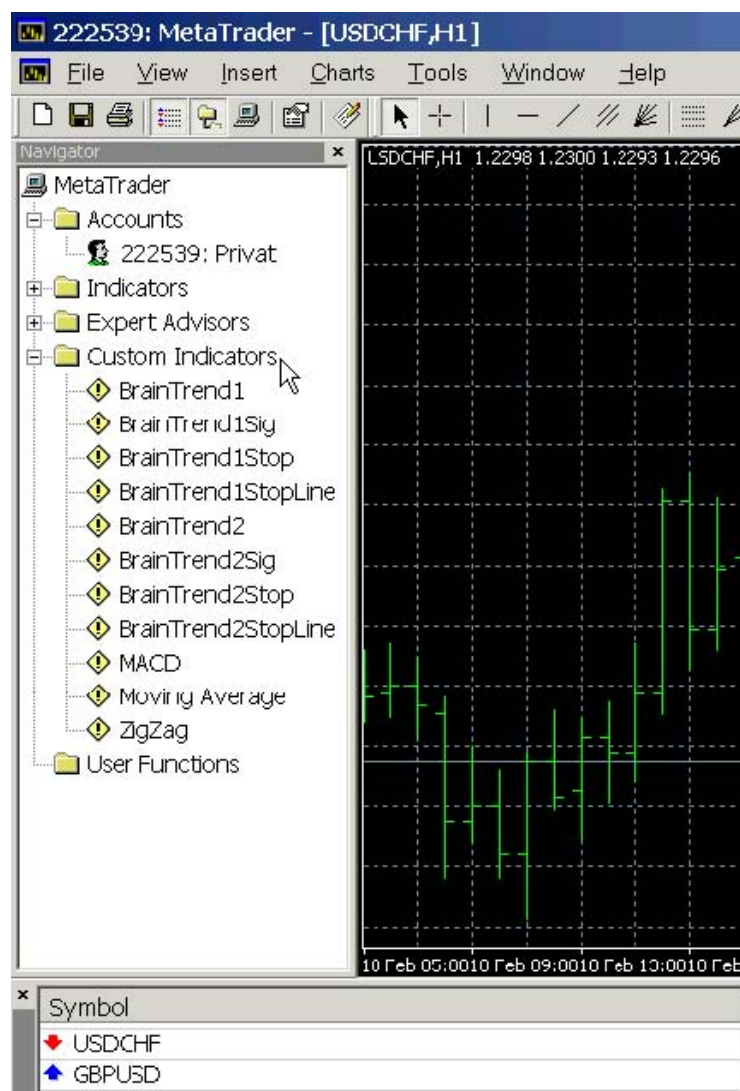
Click right mouse button inside Market Watch toolbar and choose '**Show All Symbols**'.





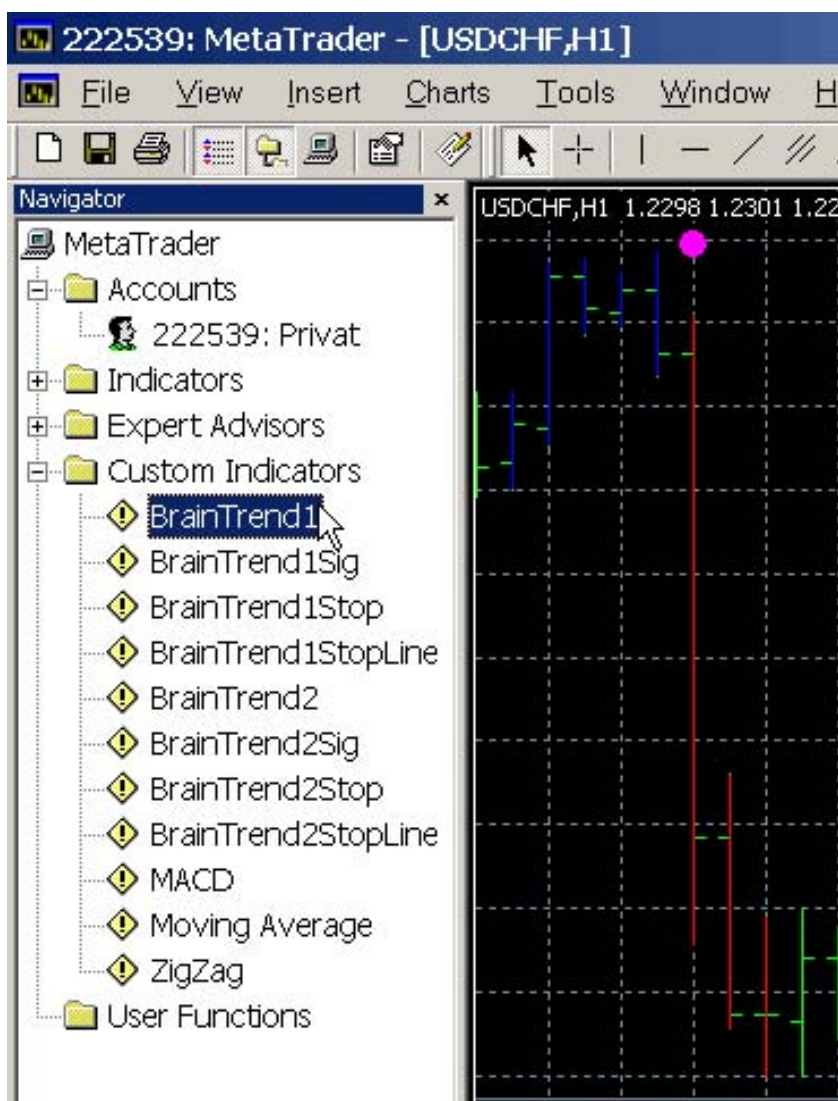
## 8. Where I can find the Indicators.

After installation and activation procedures you can find the Indicators In **Navigator** toolbar under 'Custom Indicators' Section:



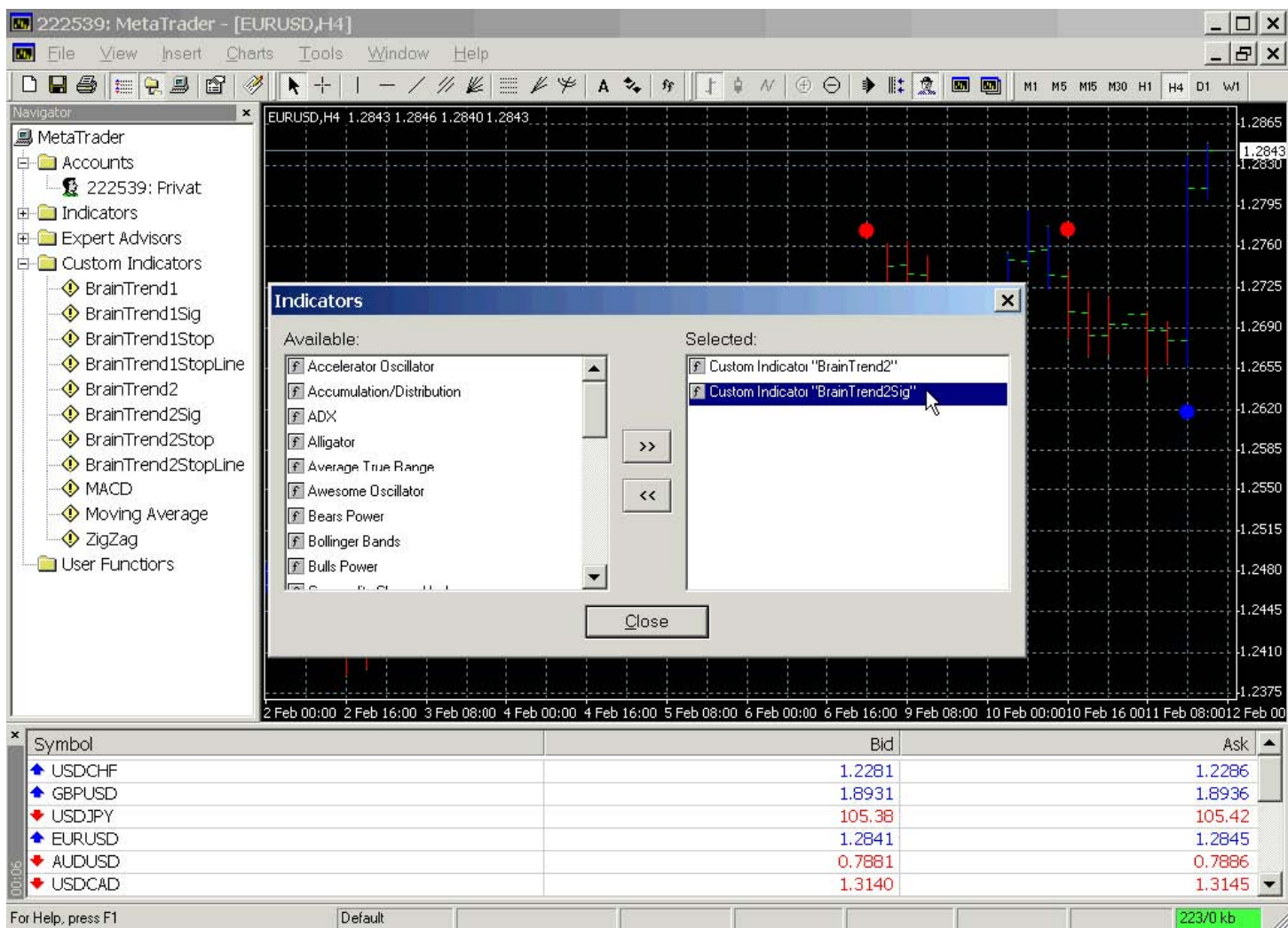
## 9. How to insert the indicators to a chart.

Double-click on Indicator Name under 'Custom Indicators' section and then press 'OK' button in 'Custom Indicator' dialog.



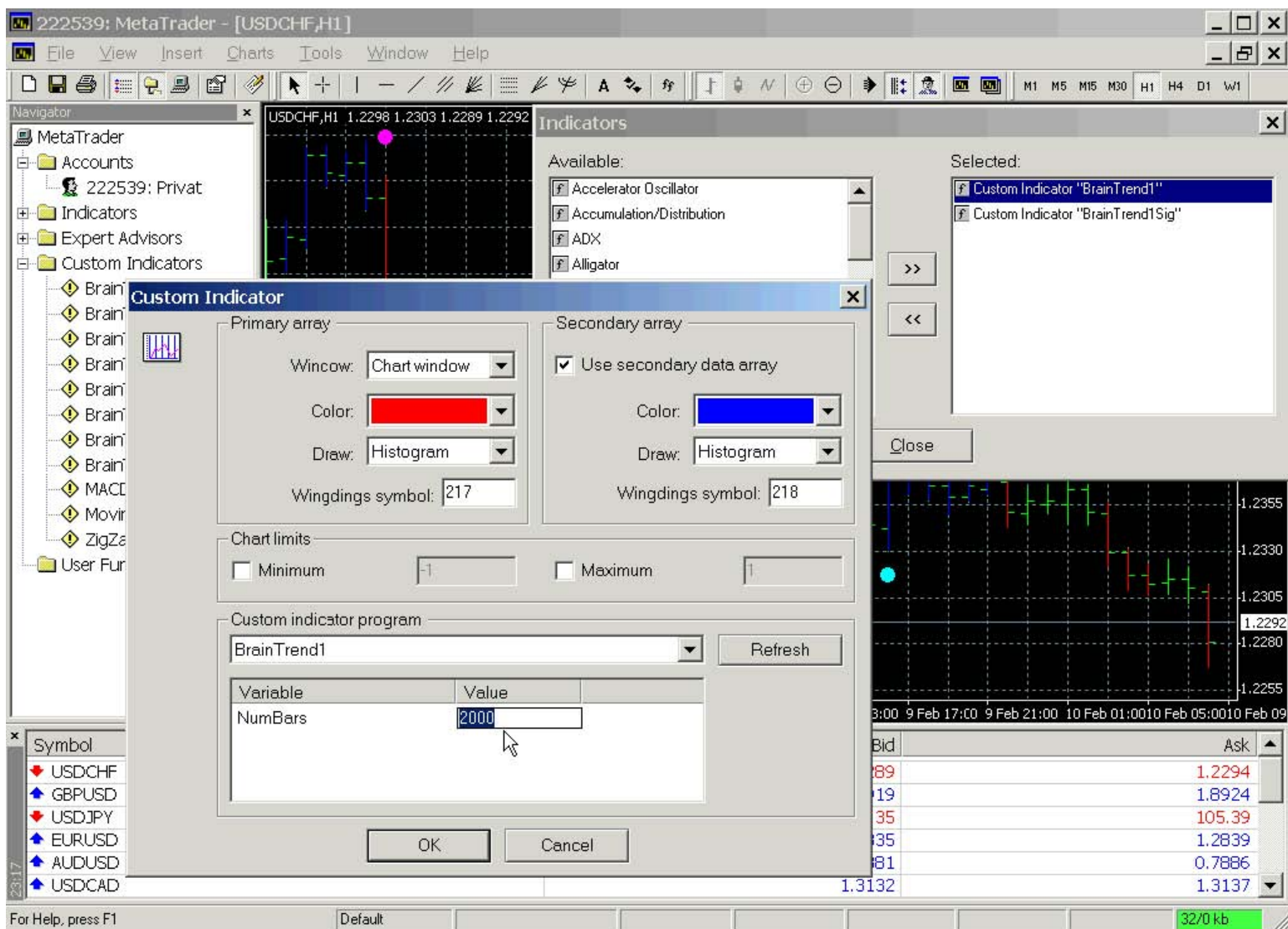
10. How to delete the Indicators from chart.

Choose **Insert->Indicator** main menu. Find indicator which you want to delete in the right column 'Selected:' and double click on it, or press << button.



## 11. How to format indicators (changing NumBars and Colors):

The indicator colors and symbols can also be changed to your preference using MetaTrader menu: click **"Insert"** main menu, then **"Indicators"**, doubleclick Indicator name in the right column "Selected" to change the color of indicator. Then Click OK button to see changes.



## 12. Add and delete lines and symbols

To add lines and symbols use in the menu Insert or buttons on the panel. To delete lines and symbols one by one starting with the last one use the key BackSpace or in the menu Charts. Also is possible to delete all the lines and symbols using Charts in the menu. It is possible to edit objects as well by double clicking on it, then click a right mouse button and pick Properties (an allocated object is possible to move and delete without an order). Do not forget that by allocation of a new object will not remove an allocation of the old one until you remove it yourself by double clicking on it, otherwise trying to edit an object you would have to fill out properties for all picked out objects. At that time all the allocated objects move independently from each other.