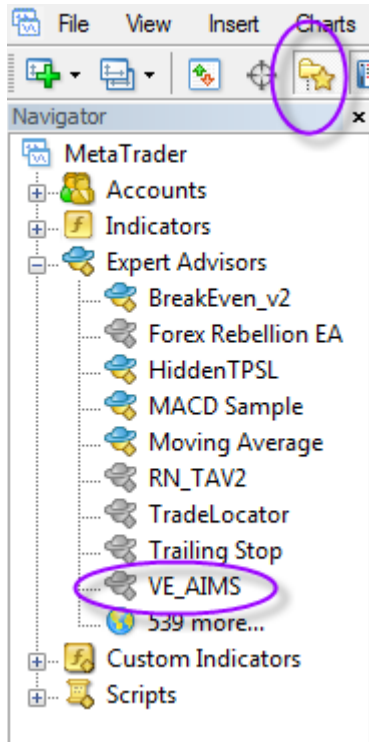
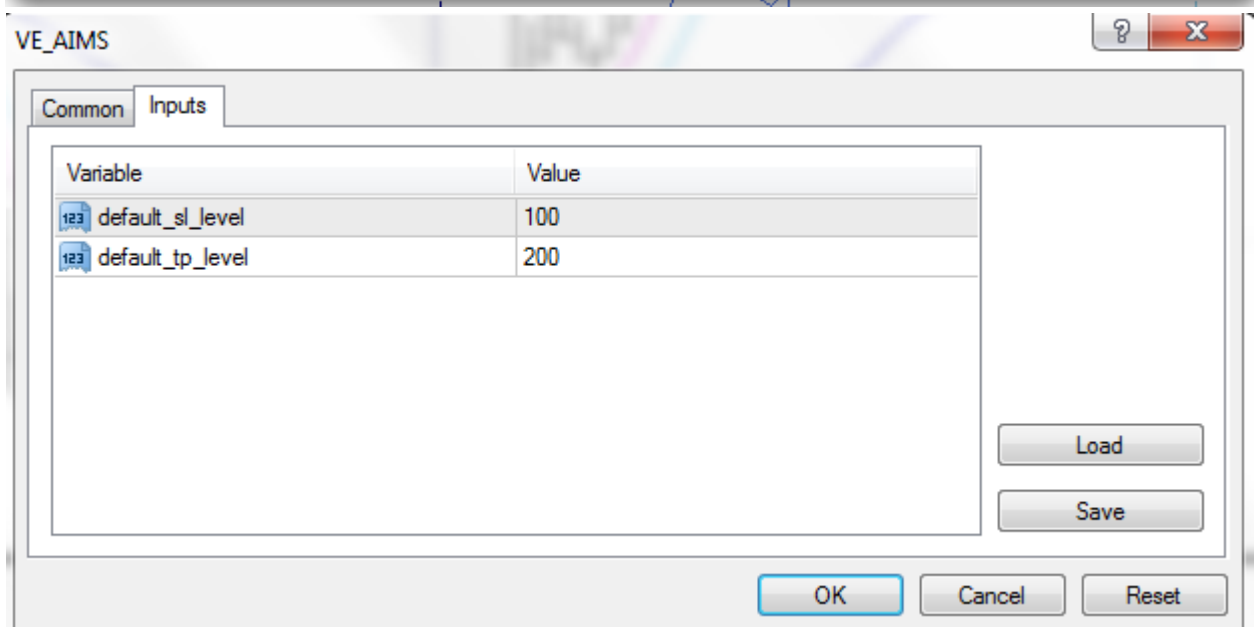
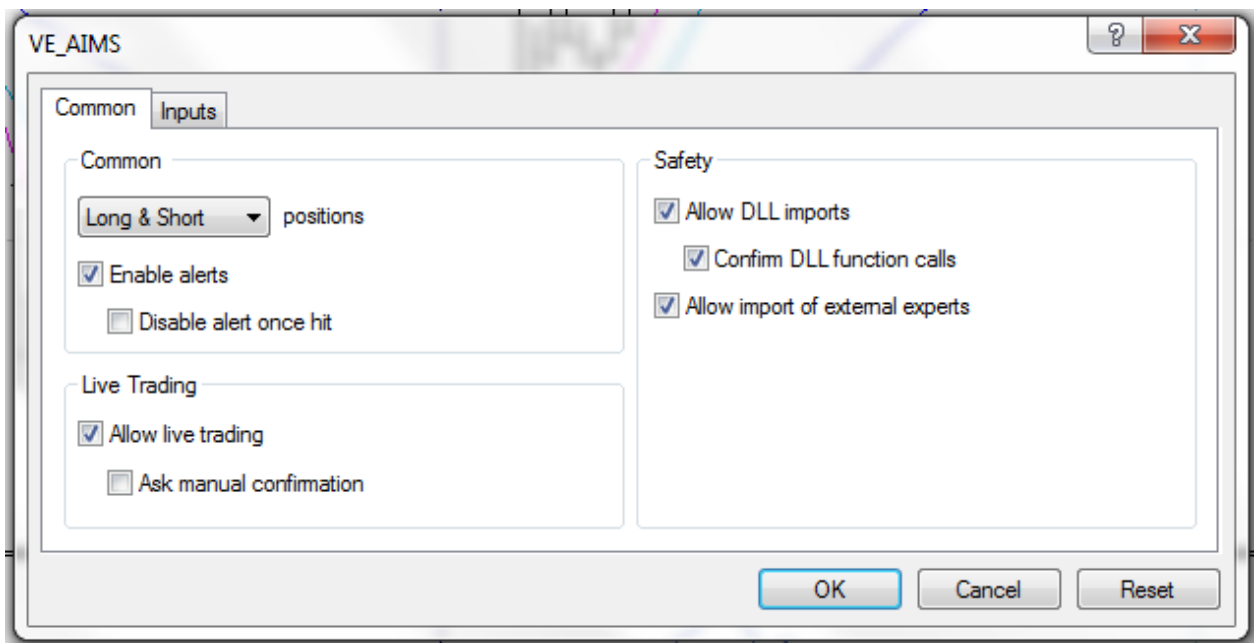


Chart Based Trade Management EA

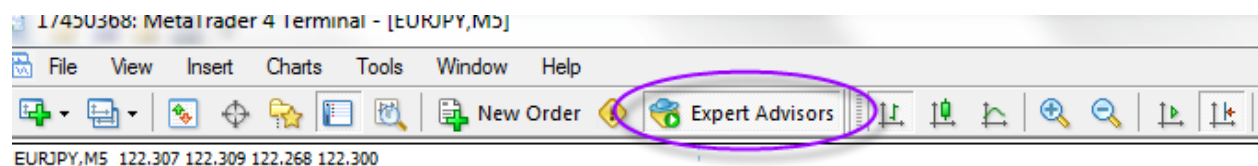
1. Place VE_AIMS.ex4 file into experts folder of MT4.
2. Shut down MT4. Start up MT4.
3. Click Navigator icon on icon bar at top of MT4. Left click to open the Expert Advisors folder. Locate VE-AIMS and left click /drag this to the chart you want to trade with.



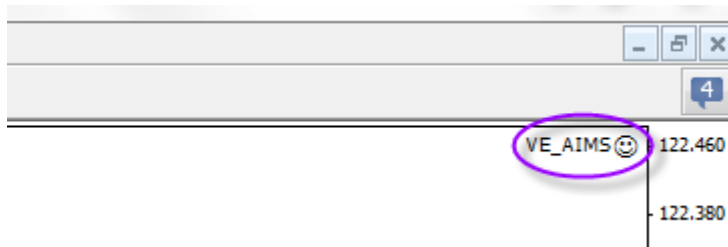
4. On the chart, right click/Expert Advisors/Properties. Set the Common and Inputs tabs as follows. The below example with Value of 100 sets the default s/l at 10 pips and the Value of 200 sets the default t/p at 20 pips, allowing for five-digit broker data.



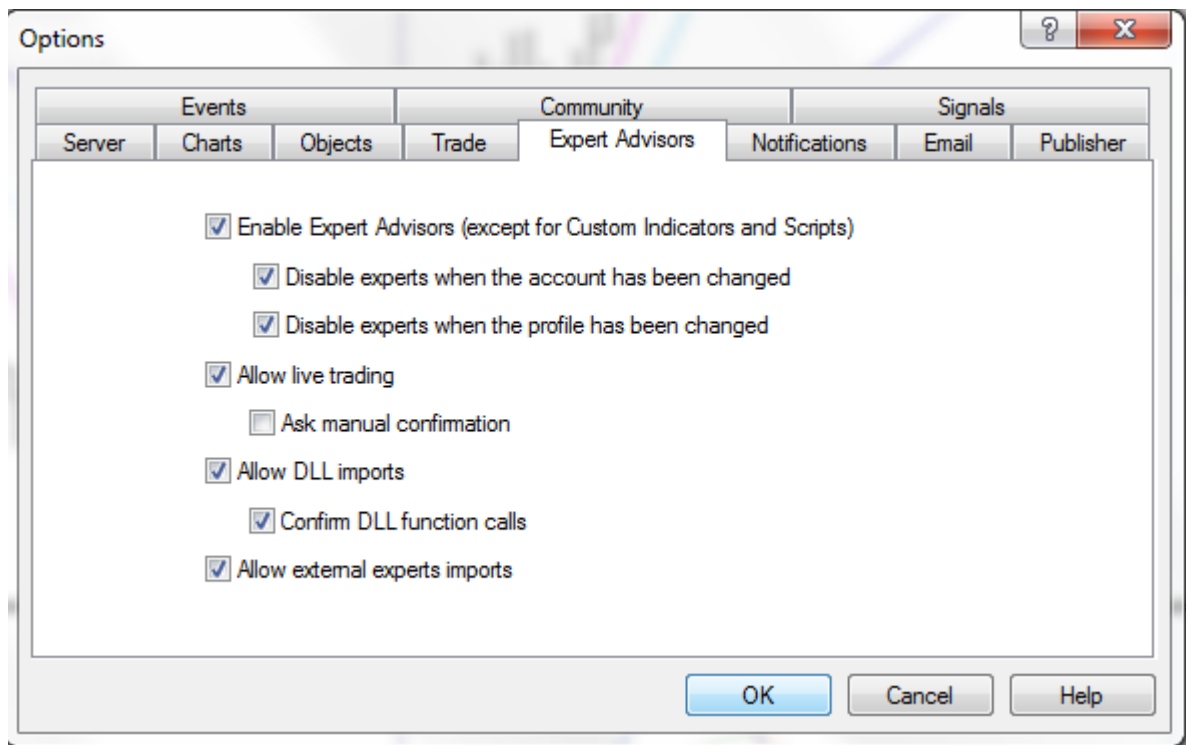
- Click on the Expert Advisors icon on the icon bar.



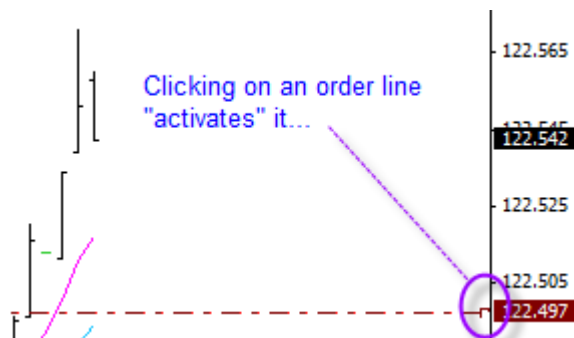
This will show the smiling face.



6. Click Tools/Options and make sure it looks like this:



7. To place a sell trade, right click/Trading/Sell Stop/Place. The three lines for sell stop entry, s/l, and t/p will appear on your chart. Click each one to activate them and then drag them to the desired area on the chart. Keep them activated so you can quickly move them if needed. No need to deactivate them.



Tips:

MT4 only allows one EA to operate at a time. Therefore, this EA will not work if you have another EA operating.

If you have the same currency pair open on two different charts, and the EA is also open on both charts, you may possibly see a ghosting effect, where the order lines appear as two buy stop orders instead of one. Should this occur, only open the EA on the one where you will be placing the orders.

This is a timesaver: You can use the hot keys in the Scripts folder to assign a hot key to “delete a pending order.” For example, click Navigator icon on icon bar at top of screen, left-click Scripts folder to open it up, right click send_pending, then click set hotkey. I have mine set to Ctrl-D. I click Ctrl-D and my pending stop entry order, my pending s/l order, and my pending t/p order are all deleted.

There may also be a way of using a hot key so that the sequence outlined in #7 above to place an order is streamlined.

This EA works quickest if you use the same lot size (i.e. stop loss) for most trades. This allows you to eliminate the extra step of having to input your lot size every time you place a pending order. Trading M1 will often result in your using the same or similar lot size.