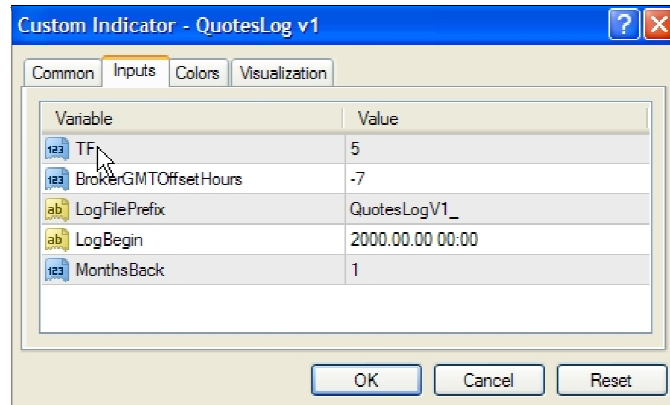


QuotesLog - Streaming Quotes Monitor

1. The monitor executable is QuotesLog Vn.ex4. Its source (QuotesLog Vn.mq4) is attached for reviewing purposes (see point 10 below).
2. The monitor has a low CPU footprint. It can run silently for a long period of time in the background.
3. Results are written to a csv file (located at <mt4_root>/experts/files) once per period (for the TF monitored) and may be used to compare with a refresh of the same data feed or logs of different data feeds.



4. In the first run, it will log the previous / refreshed quotes starting from the LogBegin parameter (if it is changed from its default). Otherwise (if it is not changed from its default) logging will start MonthsBack months from the first run date.
5. After logging the historical / refreshed quotes the monitor will continuously log the streaming quote for the recently closed bar. Streaming bars are numbered 1 while refreshed bars are numbered sequentially.

Broker	Server	TimeFrame	Bar	OpenTime	Open	High	Low	Close	Volume
London Capital Group	LondonCapitalGr-Demo	5	8	2010.07.30 19:15	1.30493	1.30556	1.30492	1.30545	567
London Capital Group	LondonCapitalGr-Demo	5	7	2010.07.30 19:20	1.30546	1.30621	1.3053	1.30599	695
London Capital Group	LondonCapitalGr-Demo	5	6	2010.07.30 19:25	1.30598	1.30609	1.30518	1.30535	471
London Capital Group	LondonCapitalGr-Demo	5	5	2010.07.30 19:30	1.30534	1.30552	1.30498	1.30524	398
London Capital Group	LondonCapitalGr-Demo	5	4	2010.07.30 19:35	1.30523	1.30534	1.30509	1.30509	250
London Capital Group	LondonCapitalGr-Demo	5	3	2010.07.30 19:40	1.30507	1.30542	1.30505	1.30542	390
London Capital Group	LondonCapitalGr-Demo	5	2	2010.07.30 19:45	1.30541	1.30553	1.30492	1.30519	627
London Capital Group	LondonCapitalGr-Demo	5	1	2010.07.30 19:50	1.30518	1.30535	1.30478	1.30502	466

6. The monitor is independent of the TF of the chart it is attached to. It is possible to attach multiple instances to the same chart – each one monitoring a different TF.
7. A rerun of the monitor will append a second batch of data to the same log file. If the file is deleted a new one will be created.
8. Note that if you change a chart's TF it will rerun the attached monitors from scratch (see previous point). Therefore, it is best to attach the monitors to a passive chart and not touch it until you are ready to examine the results.
9. To enable straightforward comparison, all logged times are GMT. Make sure to set the input parameter BrokerGMTOffsetHours according to the time zone of the broker's MT4 server.
10. The signature field in the quotes log file provides a unique verification code to each logged line (within lines and between lines). You can ignore it altogether but in case there is a disagreement re the authenticity of a result file I will be able to verify the file authenticity.)