

EA settings descriptions



Entry: Conditions

123	Channel: Period	35
123	Channel: Method	Exponential
123	Channel: Shift	0
123	Entry: Min of entry away in percent	240.0

Buy: Entry 240 percent under the channel
with distance average 20 bars channel width

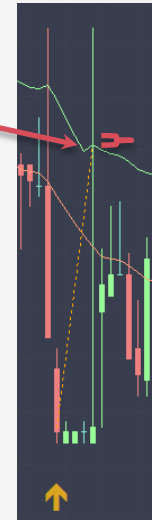
240% of last average last 20 Bars of channel width



TP: Conditions I

123	Type of TP	TP: Other channel side
123	TP: X points	50
1/2	TP: Other site:100%, nearest site:	0.0
123	Type of SL	SL: Percent from channel
123	SL: X points	80
1/2	SL: X percent from channel per entry	360.0

Buy: TP on the other side=MA high+0% from the channel width



TP: Conditions II

Buy: TP fixed 50 points

123	Type of TP	TP: Fixed
123	TP: X points	50
123	TP: Other site:100%, nearest site:	0.0

50 points



SL: Conditions I

Buy: SL fixed 80 points

123	Type of TP	TP: Other channel side
123	TP: X points	50
1/2	TP: Other site: 100%, nearest site:	0.0
123	Type of SL	SL: Percent from channel
123	SL: X points	80
1/2	SL: X percent from channel per entry	360.0

80 points



SL: Conditions II

Buy: SL 360% under the channel width

123	Type of TP	TP: Other channel side
123	TP: X points	50
1/2	TP: Other site:100%, nearest site:	0.0
123	Type of SL	SL: Percent from channel
123	SL: X points	80
1/2	SL: X percent from channel per entry	360.0

360% under MA low

