

daily Market Commentary

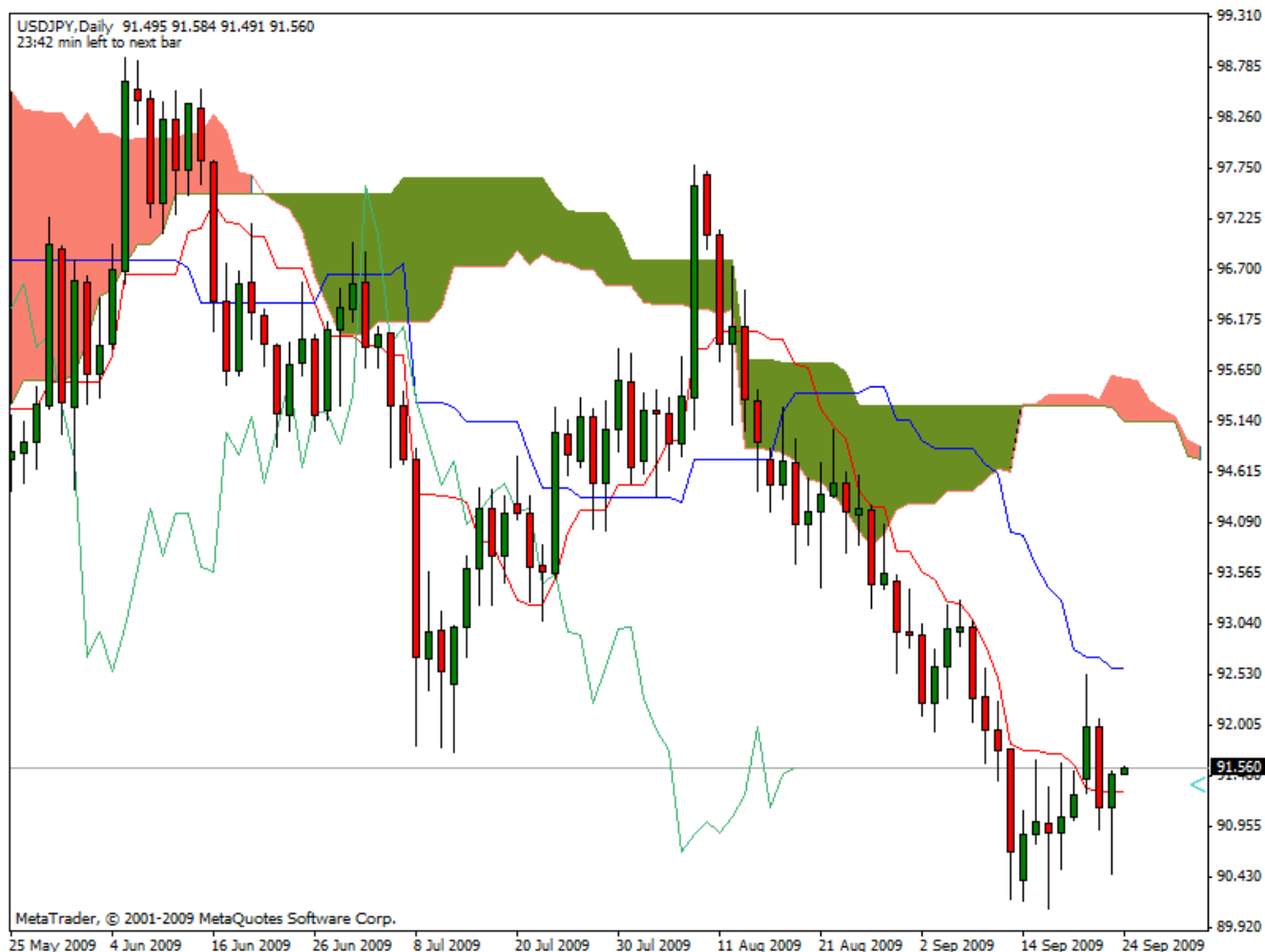
Ichimoku Kinko Hyo

Kumo Warriors

Technical Analysis

24 September 2009
USD/JPY

Daily Candlestick Chart



Comment: another daily close above Ts, risk towards Ks can be seen now .

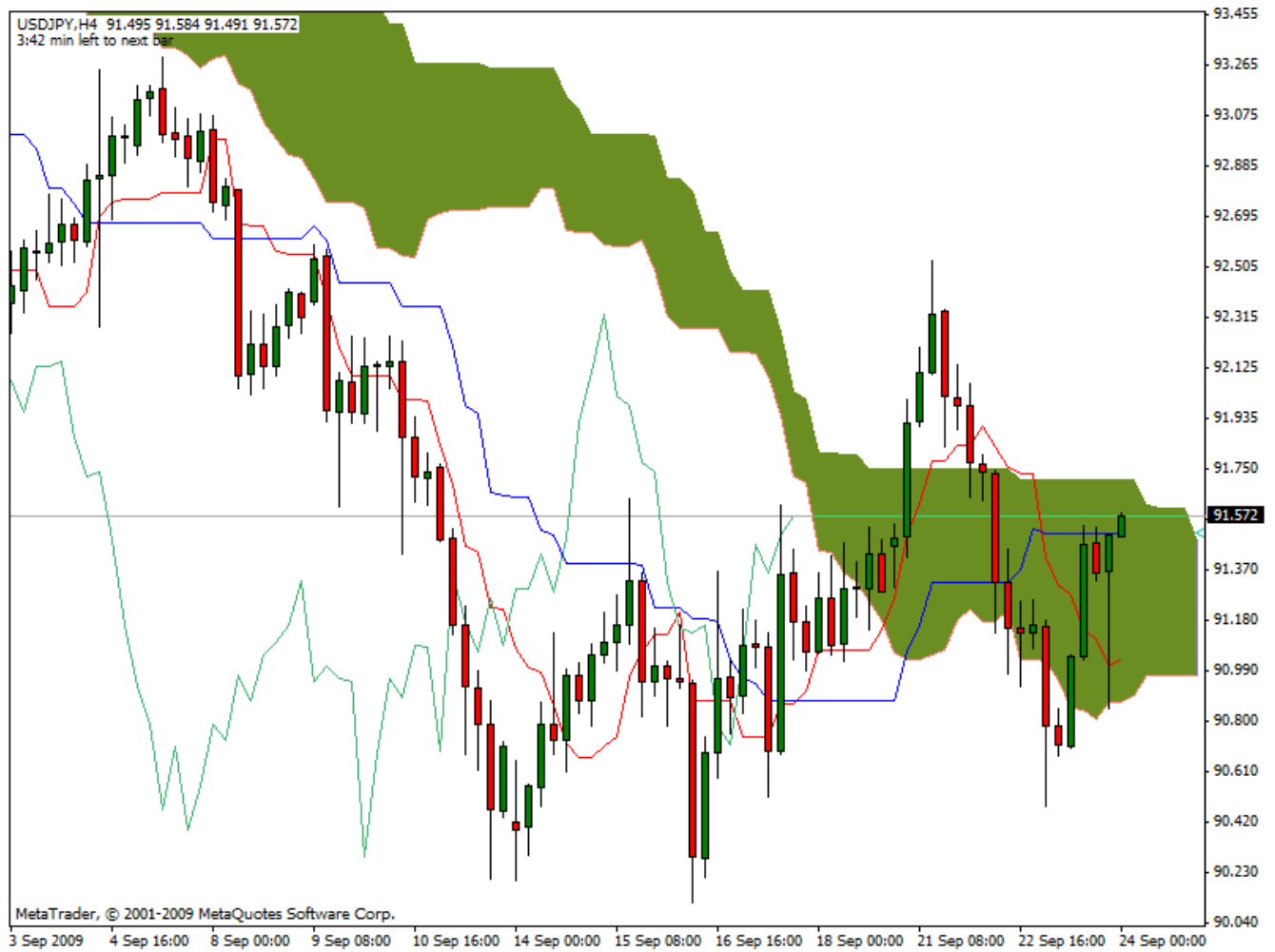
Disclaimer: all the data provided on this sheet are based upon the Ichimoku system analysis, all statements and expressions in here are personal opinions, and not meant as investment advice or solicitation.

Forex Factory: <http://www.forexfactory.com/showthread.php?t=190646>

Reports Archive: <http://www.4shared.com/dir/19807073/7e882875/sharing.html>

Email: KumoWarriors@gamil.com

4Hrs Candlestick Chart



Comment: Trend less condition as the price is inside the Kumo. Awaiting Kumo clearance to determine direction.

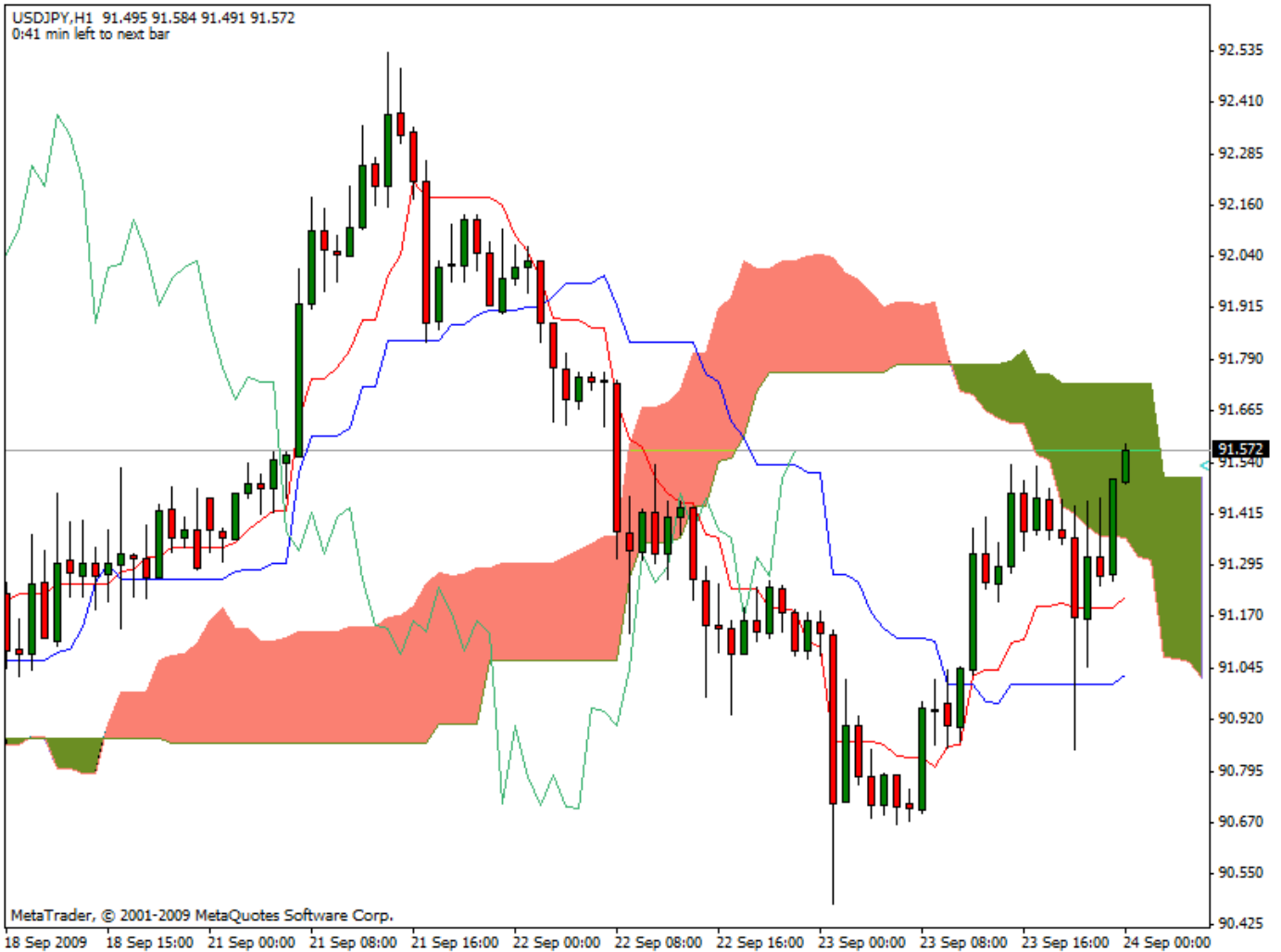
Disclaimer: all the data provided on this sheet are based upon the Ichimoku system analysis, all statements and expressions in here are personal opinions, and not meant as investment advice or solicitation.

Forex Factory: <http://www.forexfactory.com/showthread.php?t=190646>

Reports Archive: <http://www.4shared.com/dir/19807073/7e882875/sharing.html>

Email: KumoWarriors@gamil.com

1Hr Candlestick Chart



Comment: Same as 4Hrs regarding the trend, i'll be waiting for a close below the cloud followed by a cross to arrange an entry

Trends	
Major Trend (W)	bearish
Median Trend (D)	Mixed
Minor Trend (4Hr)	Mixed

Conclusion: Waiting cloud clearance to decide entry point.

Disclaimer: all the data provided on this sheet are based upon the Ichimoku system analysis, all statements and expressions in here are personal opinions, and not meant as investment advice or solicitation.

Forex Factory: <http://www.forexfactory.com/showthread.php?t=190646>

Reports Archive: <http://www.4shared.com/dir/19807073/7e882875/sharing.html>

Email: KumoWarriors@gamil.com