

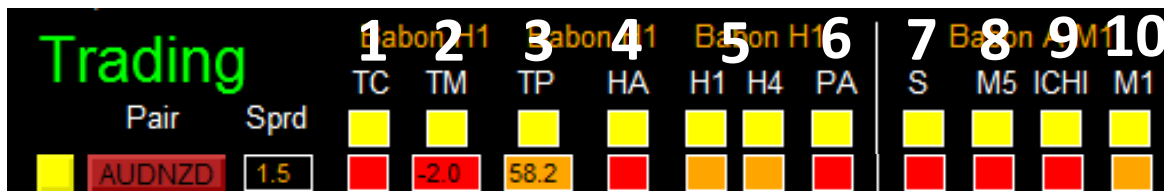
Entry Rules

- Buy signal of a particular pair will be generated once all the selected indicators agree in up (if pair is selected). (Refer to screenshot3,4,5)
 - TDI Price > TDI Signal: TC is green
 - Current TDI Price – Previous TDI Price > TDI Momentum Limit: TM is green
 - TDI Price < TDI overbought limit: TP is orange or green
 - Current H1 Heiken Ashi is green: HA is green
 - Price is inside H1 and H4 TMA upper and lower bands: H1 and H4 panel is orange
 - Current H1 candle is green; PA is green
 - Babon slope is uptrend [Slope(2)<Slope(1)]: S is green
 - Price>M5 TMA lower band; Price < (M5 TMA upper band – gap limit); and M5 TMA is uptrend (Current M5 TMA > Previous M5 TMA): M5 is green
 - Price is above Ichimoku cloud; ICHI is green
 - Absolute value of (Close – Open) of Previous M1 candle is less than Limit

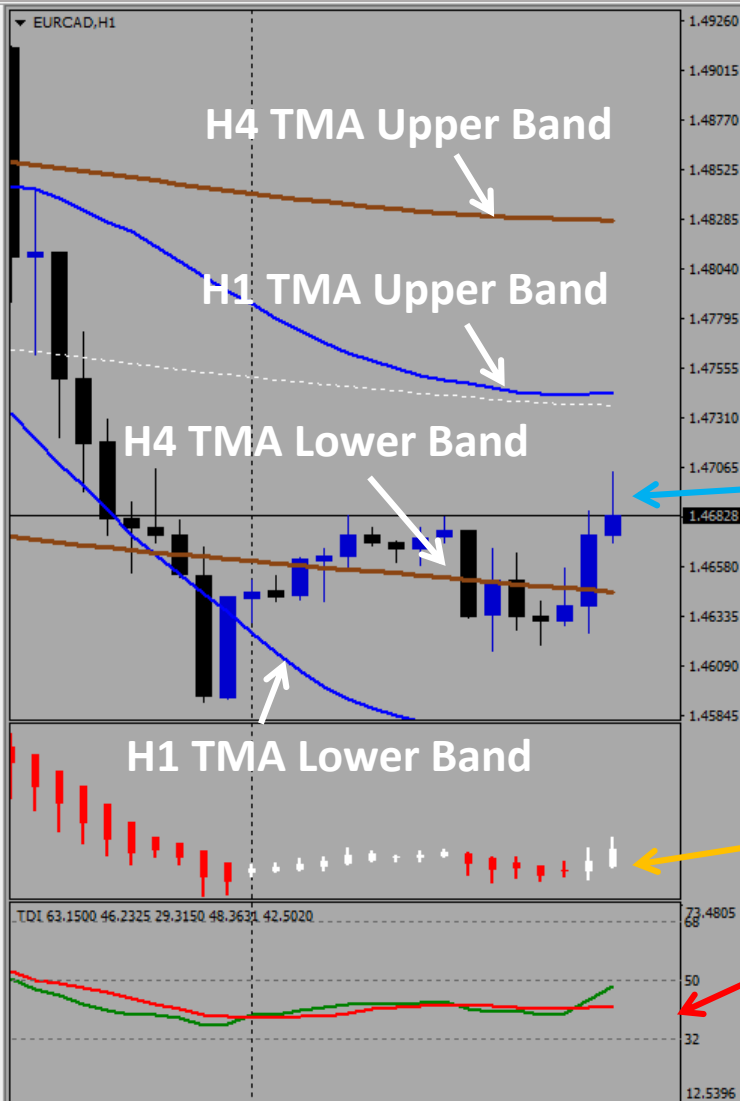
Trading		1	2	3	4	5	6	7	8	9	10	
Pair	Sprd	TC	TM	TP	HA	H1	H4	PA	S	M5	ICHI	M1
EURNZD	3.2	Green	Green	Orange	Green	Orange	Orange	Green	Green	Green	Green	Orange

Entry Rules

- **Sell signal of a particular pair will be generated once all the selected indicators agree in down (if pair is selected). (Refer to screenshot3,4,5)**
 1. TDI Price < TDI Signal: TC is red
 2. Current TDI Price – Previous TDI Price < -TDI Momentum Limit: TM is red
 3. TDI Price > TDI oversold limit: TP is orange or red
 4. Current H1 Heiken Ashi is red: HA is red
 5. Price is inside H1 and H4 TMA upper and lower bands: H1 and H4 panel is orange
 6. Current H1 candle is red; PA is red
 7. Babon slope is downtrend [Slope(2)>Slope(1)]: S is red
 8. Price<M5 TMA upper band; Price > (M5 TMA lower band + gap limit);; and M5 TMA is downtrend (Current M5 TMA < Previous M5 TMA): M5 is red
 9. Price is below Ichimoku cloud; ICHI is red
 10. Absolute value of (Close – Open) of Previous M1 candle is less than Limit



Babon H1 (Big Picture)



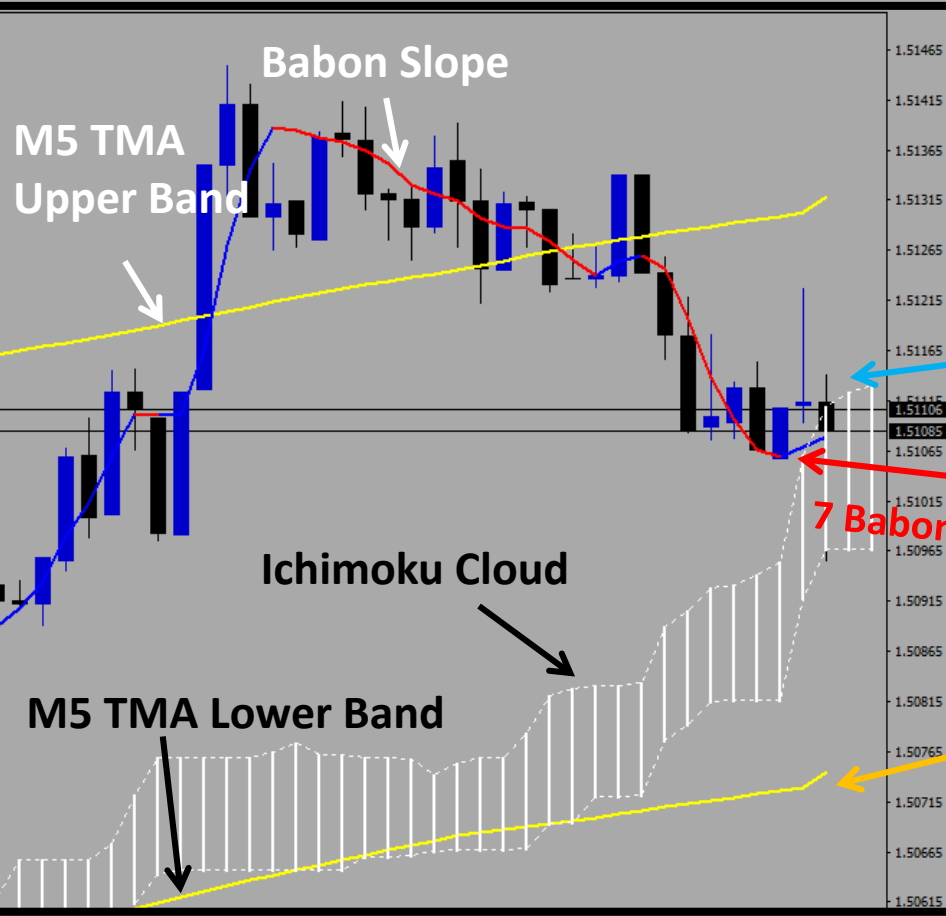
5 Price is inside H1 and H4 TMA bands
6 Price is uptrend

Trading		Babon H1			Babon H1			Babon H1		
Pair	Sprd	TC	TM	TP	HA	H1	H4	PA		
EURNZD	3.2	3.4	58.5							

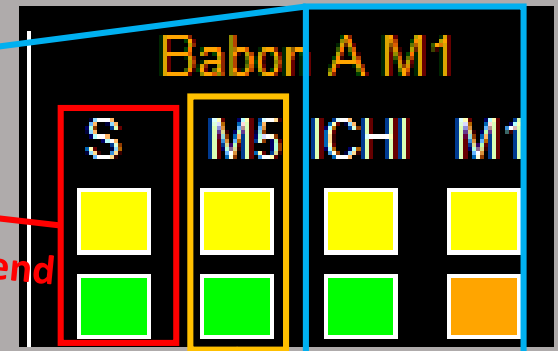
4 H1 HA Candle is White

- 1 TDI Price (green) is above TDI Signal (red)
- 2 TDI Price uptrend (Current Price > Previous Price)
- 3 TDI Price is below overbought limit

Babon A (M1)



9 Price is above Ichimoku cloud
 10 Previous M1 growth is less than limit



7 Babon Slope is uptrend

8 Price is inside M5 TMA band;
 and M5 TMA is uptrend

Trading

Pair	Sprd	Babon H1				Babon H1			Babon A M1			
		TC	TM	TP	HA	H1	H4	PA	S	M5	ICHI	M1
AUDCAD	1.1		-5.3	47.4								
AUDCHF	1.0		-5.3	49.3								
AUDJPY	1.0		-5.7	57.2								
AUDNZD	1.7		-3.9	60.0								
AUDUSD	0.3		-5.8	41.1								
CADCHF	1.1		-3.6	51.4								
CADJPY	0.4		-4.1	61.2								
CHFJPY	1.3		-2.5	67.8								
EURAUD	1.6		5.9	50.6								
EURCAD	0.8		4.2	48.5								
EURCHF	0.4		1.1	49.3								
EURGBP	0.6		-2.0	32.3								
EURJPY	0.4		-2.0	68.3								
EURNZD	3.2		3.4	58.5								
EURUSD	0.1		0.1	33.4								
GBPAUD	2.7		6.4	59.3								
GBPCAD	1.2		4.8	61.4								
GBPCHF	2.2		2.3	66.7								
GBPJPY	1.6		0.3	72.2								
GBPNZD	4.0		3.7	68.0								
GBPUSD	0.4		2.2	52.3								
NZDCAD	1.3		-0.3	37.2								
NZDCHF	1.6		-2.8	42.4								
NZDJPY	1.4		-4.3	53.1								
NZDUSD	0.7		-2.5	32.0								
USDCAD	0.7		4.3	63.2								
USDCHF	0.5		0.3	65.7								
USDJPY	0.4		-1.1	71.1								

Buy	Sell	Symbol	Profit
0.00	0.00	AUDCAD	0.00
0.00	0.01	AUDCHF	0.56
0.00	0.00	AUDJPY	0.00
0.00	0.00	AUDNZD	0.00
0.00	0.00	AUDUSD	0.00
0.00	0.00	CADCHF	0.00
0.00	0.00	CADJPY	0.00
0.00	0.01	CHFJPY	1.38
0.00	0.00	EURAUD	0.00
0.00	0.00	EURCAD	0.00
0.01	0.00	EURCHF	0.46
0.00	0.00	EURGBP	0.00
0.00	0.00	EURJPY	0.00
0.01	0.00	EURNZD	0.49
0.00	0.00	EURUSD	0.00
0.00	0.00	GBPAUD	0.00
0.00	0.00	GBPCAD	0.00
0.00	0.00	GBPCHF	0.00
0.00	0.00	GBPJPY	0.00
0.00	0.00	GBPNZD	0.00
0.00	0.00	GBPUSD	0.00
0.00	0.00	NZDCAD	0.00
0.00	0.00	NZDCHF	0.00
0.00	0.00	NZDJPY	0.00
0.00	0.00	NZDUSD	0.00
0.00	0.00	USDCAD	0.00
0.00	0.00	USDCHF	0.00
0.00	0.00	USDJPY	0.00

Profit Baskets= **0**

Basket TP = \$ **15.00** Highest = \$ **3.04**

Loss Baskets= **0**

Basket SL = \$- **15.00** Lowest = \$- **-1.72**

2.89

AutoTrade


ON

GBPAUD,H1 1.97071 1.97190 1.96944 1.96971

Properties of GBPAUD,H1

Colors Common

Color scheme: [dropdown]



Background: Black [dropdown]

Foreground: White [dropdown]

Grid: None [dropdown]

Bar Up: None [dropdown]

Bar Down: None [dropdown]

Bull candle: None [dropdown]

Bear candle: None [dropdown]

Line graph: None [dropdown]

Volumes: None [dropdown]

Ask line: None [dropdown]

Stop levels: None [dropdown]

OK Cancel Reset

6 May 2016 9 May 08:00 10 May 16:00 12 May 00:00 13 May 08:00 16 May 16:00 18 May 00:00 19 May 08:00 20 May 16:00 24 May 00:00 25 May 08:00 26 May 16:00 30 May 00:00

GBPAUD,H1 | EURUSD,M1

4 Indicator Tick Status Panel

Trading

Babon H1 Babon H1

TC TM TP HA

Pair	Sprd	TC	TM	TP	HA
AUDCAD	1.1	Yellow	5.2	47.4	Red
AUDCHF	1.0	Red	-5.3	49.3	Red
AUDJPY	1.0	Red	-5.7	57.2	Red
AUDNZD	1.7	Red	-3.9	60.0	Red
AUDUSD	0.3	Red	-5.8	41.1	Red
CADCHF	1.1	Red	-3.6	51.4	Red
CADJPY	0.4	Red	-4.1	61.2	Red
CHFJPY	1.3	Red	-2.5	67.8	Green
EURAUD	1.6	Green	5.9	50.6	Green
EURCAD	0.8	Green	4.2	48.5	Green
EURCHF	0.4	Green	1.1	49.3	Green
EURGBP	0.6	Red	-2.0	32.3	Red
EURJPY	0.4	Red	-2.0	68.3	Green
EURNZD	3.2	Green	3.4	58.5	Green
EURUSD	0.1	Green	0.1	33.4	Red

1 Pair Tick Button

2 Pair Symbol Button

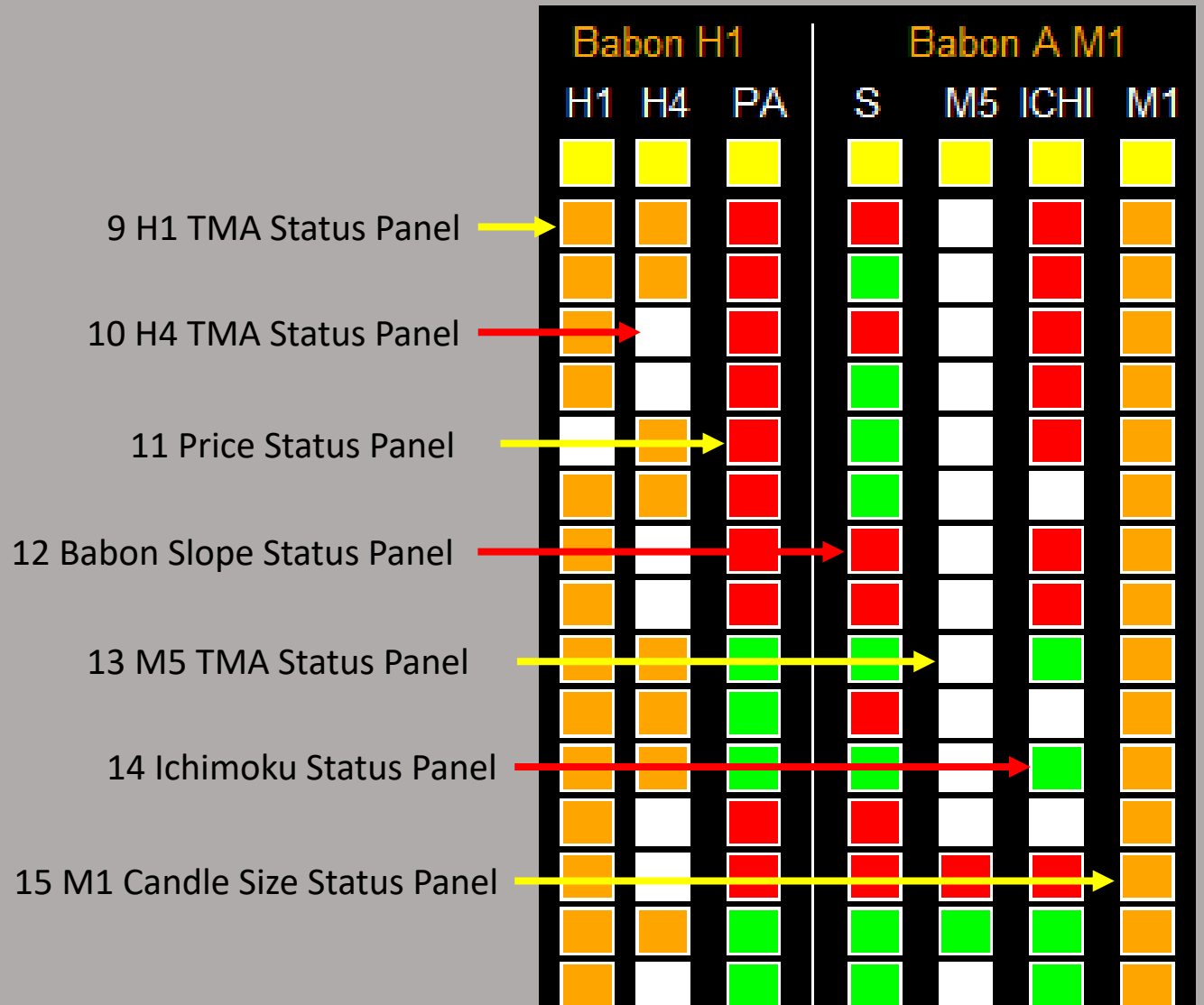
3 Spread Column

5 TDI Cross Status Panel

6 TDI Momentum Status Panel

7 TDI Price Status Panel

8 HA Status Panel



16 Buy Button



17 Sell Button



18 Close Button



Buy Sell Symbol Profit

Buy	Sell	Symbol	Profit
0.00	0.00	AUDCAD	0.00
0.00	0.00	AUDCHF	0.00
0.00	0.00	AUDJPY	0.00
0.00	0.00	AUDNZD	0.00
0.00	0.00	AUDUSD	0.00
0.00	0.00	CADCHF	0.00
0.00	0.00	CADJPY	0.00
0.00	0.00	CHFJPY	0.00
0.00	0.00	EURAUD	0.00
0.00	0.00	EURCAD	0.00
0.00	0.00	EURCHF	0.00
0.00	0.00	EURGBP	0.00
0.00	0.00	EURJPY	0.00
0.00	0.00	EURNZD	0.00
0.00	0.00	EURUSD	0.00
0.00	0.00	GBPAUD	0.00
0.00	0.00	GBPCAD	0.00
0.00	0.00	GBPCHF	0.00
0.00	0.00	GBPJPY	0.00
0.00	0.00	GBPNZD	0.00
0.00	0.00	GBPUSD	0.00
0.00	0.00	NZDCAD	0.00
0.00	0.00	NZDCHF	0.00
0.00	0.00	NZDJPY	0.00
0.00	0.00	NZDUSD	0.00
0.00	0.00	USDCAD	0.00
0.00	0.00	USDCHF	0.00
0.00	0.00	USDJPY	0.00

19 Buy Volume Column

20 Sell Volume Column

21 Symbol Column

22 Profit Column

Autotrade will open at most 1 position per pair based on signal generated. If signal occurs but position already exists for a particular pair, no order will be sent. However, you can manually click on 'B' and/or 'S' button to any number of positions you want (click once send one order).

23 Profit Baskets

Profit Baskets=

0

24 Basket TP

Basket TP = \$

15.00

Highest= \$

0.00

25 Basket Highest

26 Loss Baskets

Loss Baskets=

0

27 Basket SL

Basket SL = \$-

15.00

Lowest= \$-

0.00

28 Basket Lowest

29 Current Basket Profit

0.000

30 Close All

CLOSE ALL

CLOSE PROFIT

CLOSE LOSS

31 Close Profit

32 Close Loss

Trading

33 Session Monitor Panel



34 AutoTrade Monitor Panel



35 Pair/Currency Selection Button



AutoTrade

ON

All

None

EUR

USD

GBP

JPY

AUD

CAD

NZD

CHF

Variable	Value
Use AutoTrade	true
Send Alert upon Signal	false
Send Notification upon Singal	false
Single pair TP in pips (0=no TP)	25.0
Single pair SL in pips (0=no SL)	25.0
TDI Setting	RSI Price LIne=2; Trade Signal LIne=7
RSI Period (8-25)	13
RSI Price (0-6)	0
Use TDI Cross	true
Use TDI Momentum	true
TDI Momentum Threshold	2.0
Use TDI Overbought Oversold Limit	true

Once alert/notification of a particular pair has been sent, the next alert/notification of that pair will be sent after 5 minutes upon signal.

Variable	Value
Use Babon Slope	true
Slope Period	10
Slope Method	LWMA
Slope Applied Price	MA_Close_Price
Use TMA M5	true
Price to TMA M5 Band Gap Limit	10
Use Ichimoku	true
Tenkan-sen	9
Kijun-sen	26
Senkou Span B	52
Use Previous M1 Candle Size	true
Previous M1 Candle Size Limit	10.0
Magic Number	12345
Lot Size	0.01
Basket TP in \$	15
Basket SL in \$	15
Max Spread	2.0

Basket means all active (open) positions opened by this dashboard with the same magic number. The basket profit is the total profit of all these active positions