

# VantagePoint Intermarket Analysis Software - Chart

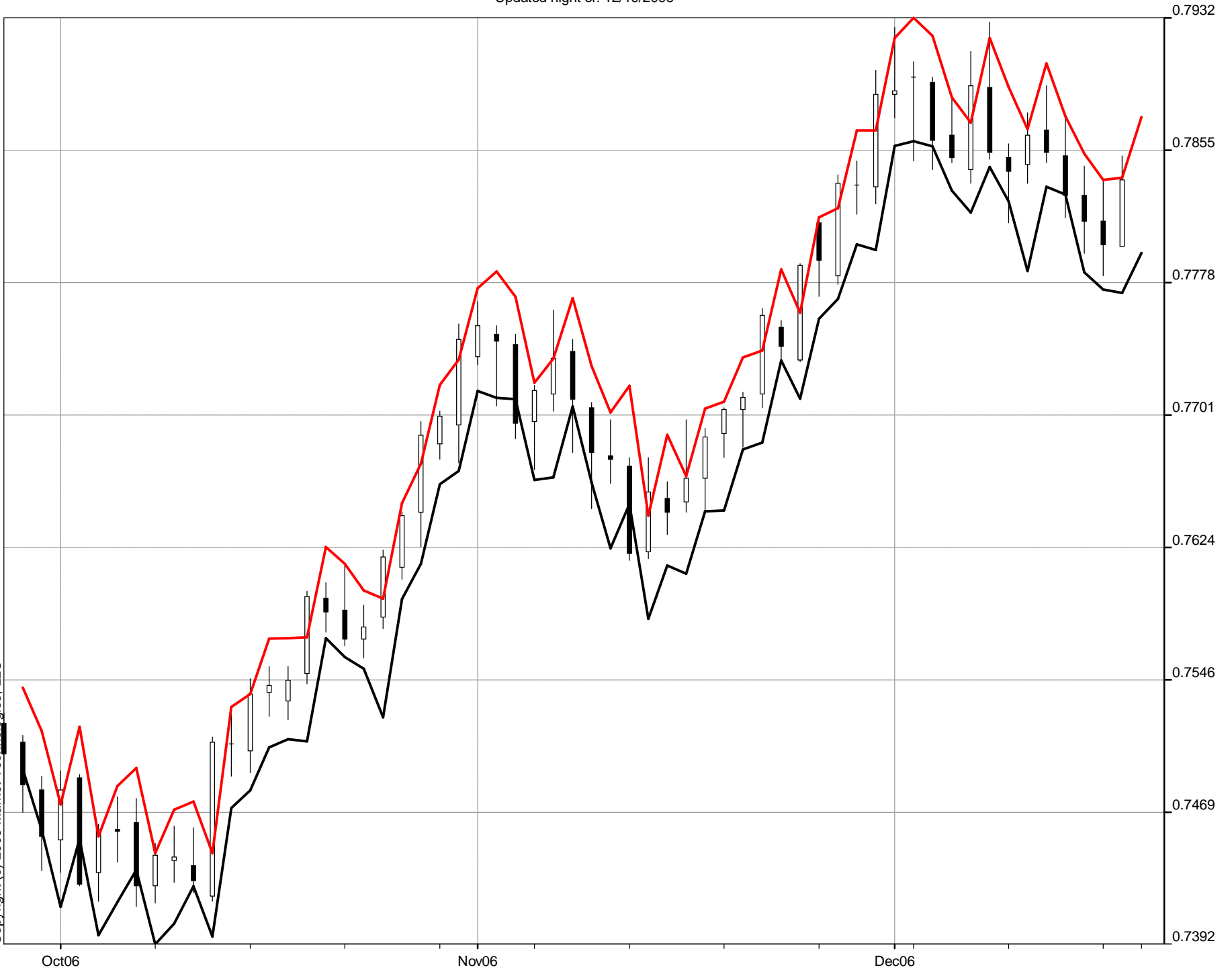
Australian Dollar / U.S. Dollar - Cash

Updated night of: 12/19/2006

— Predicted  
Next  
Day  
High  
0.7875

— Predicted  
Next  
Day  
Low  
0.7795

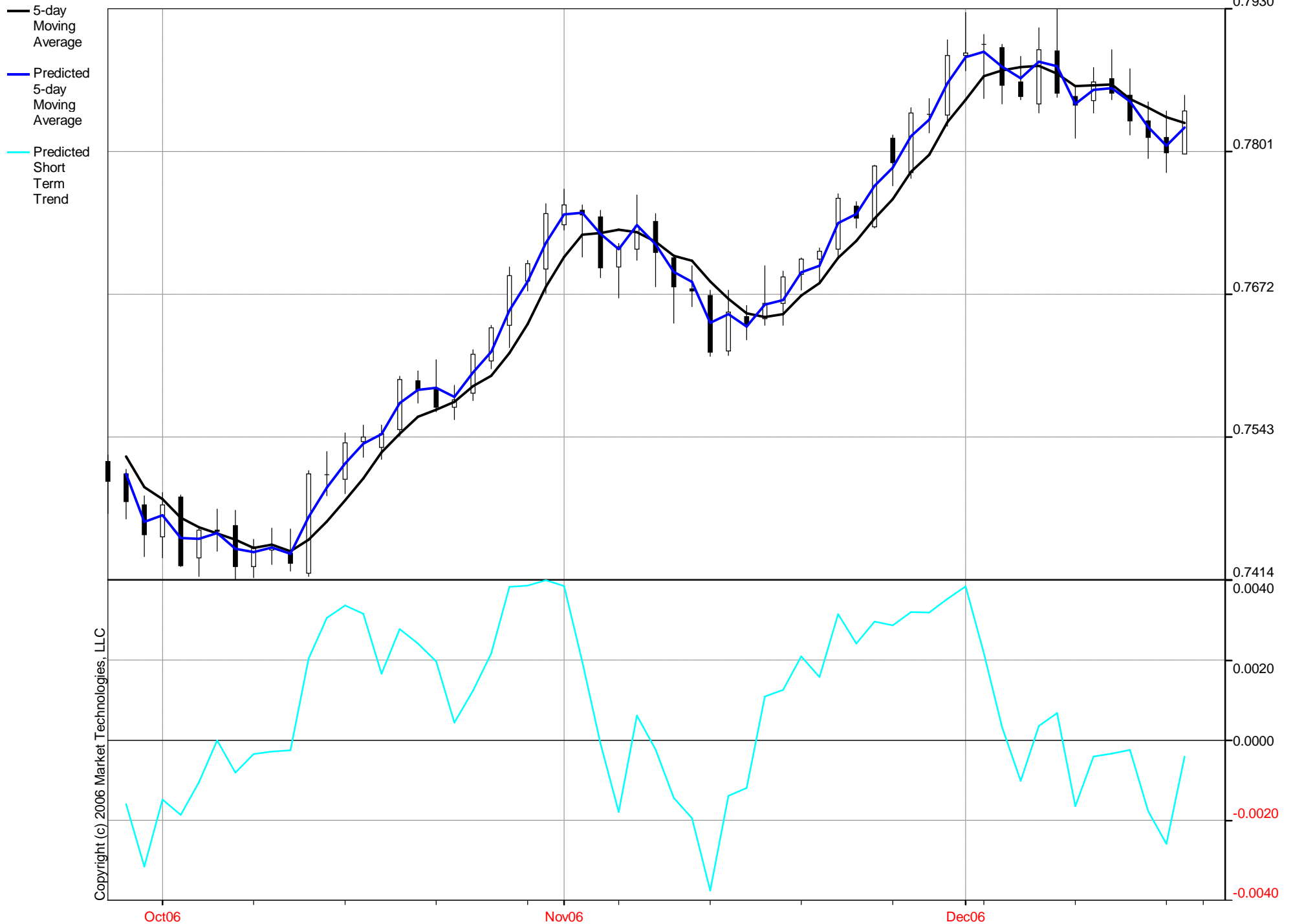
Copyright (c) 2006 Market Technologies, LLC



# VantagePoint Intermarket Analysis Software - Chart

Australian Dollar / U.S. Dollar - Cash

Updated night of: 12/19/2006



# VantagePoint Intermarket Analysis Software - Chart

Australian Dollar / U.S. Dollar - Cash

Updated night of: 12/19/2006



# VantagePoint Intermarket Analysis Software - History Report

Australian Dollar / U.S. Dollar - Cash

Updated night of: 12/19/2006

Date	Open	High	Low	Close	Predicted Next Day High	Predicted Next Day Low	Predicted High Difference	Predicted Low Difference	5-day Moving Average	10-day Moving Average	Predicted 5-day Moving Average	Predicted 10-day Moving Average	Predicted Short Term Trend	Predicted Medium Term Trend	Predicted Neural Index	Strength
09/27/2006	0.7521	0.7527	0.7474	0.7503	0.7518	0.7451	-0.0009	-0.0023	0.7526	0.7530	0.7510	0.7534	-0.0016	0.0004	0.00	-0.62
09/28/2006	0.7510	0.7514	0.7469	0.7485	0.7516	0.7459	0.0002	-0.0010	0.7508	0.7524	0.7495	0.7510	-0.0013	-0.0014	0.00	-0.16
09/29/2006	0.7482	0.7490	0.7435	0.7455	0.7474	0.7414	-0.0016	-0.0021	0.7498	0.7517	0.7466	0.7485	-0.0032	-0.0032	0.00	-1.63
10/02/2006	0.7453	0.7493	0.7434	0.7482	0.7519	0.7453	0.0026	0.0019	0.7487	0.7510	0.7473	0.7500	-0.0014	-0.0010	1.00	1.17
10/03/2006	0.7489	0.7491	0.7426	0.7427	0.7455	0.7397	-0.0036	-0.0029	0.7470	0.7500	0.7452	0.7461	-0.0018	-0.0039	0.00	-1.71
10/04/2006	0.7434	0.7462	0.7417	0.7459	0.7484	0.7417	0.0022	0.0000	0.7462	0.7494	0.7451	0.7478	-0.0011	-0.0016	1.00	0.59
10/05/2006	0.7459	0.7478	0.7440	0.7458	0.7495	0.7435	0.0017	-0.0005	0.7456	0.7482	0.7456	0.7463	0.0000	-0.0019	1.00	0.16
10/06/2006	0.7463	0.7477	0.7414	0.7426	0.7445	0.7392	-0.0032	-0.0022	0.7450	0.7474	0.7442	0.7461	-0.0008	-0.0013	0.00	-1.25
10/09/2006	0.7426	0.7451	0.7416	0.7444	0.7471	0.7404	0.0020	-0.0012	0.7443	0.7465	0.7439	0.7459	-0.0004	-0.0006	1.00	0.29
10/10/2006	0.7441	0.7461	0.7428	0.7443	0.7475	0.7426	0.0014	-0.0002	0.7446	0.7458	0.7443	0.7460	-0.0003	0.0002	1.00	0.51
10/11/2006	0.7438	0.7460	0.7422	0.7429	0.7445	0.7397	-0.0015	-0.0025	0.7440	0.7451	0.7438	0.7454	-0.0002	0.0003	0.00	-1.06
10/12/2006	0.7420	0.7513	0.7417	0.7510	0.7531	0.7471	0.0018	0.0054	0.7450	0.7453	0.7471	0.7477	0.0021	0.0024	1.00	2.34
10/13/2006	0.7509	0.7530	0.7490	0.7509	0.7538	0.7482	0.0008	-0.0008	0.7467	0.7459	0.7498	0.7484	0.0031	0.0025	1.00	0.73
10/16/2006	0.7505	0.7547	0.7492	0.7538	0.7570	0.7507	0.0023	0.0015	0.7486	0.7464	0.7519	0.7495	0.0033	0.0031	1.00	1.86
10/17/2006	0.7539	0.7554	0.7525	0.7543	0.7570	0.7512	0.0016	-0.0013	0.7506	0.7476	0.7537	0.7507	0.0031	0.0031	1.00	0.93
10/18/2006	0.7534	0.7554	0.7523	0.7546	0.7571	0.7510	0.0017	-0.0013	0.7529	0.7485	0.7546	0.7516	0.0017	0.0031	1.00	0.76
10/19/2006	0.7550	0.7598	0.7544	0.7595	0.7624	0.7571	0.0026	0.0027	0.7546	0.7498	0.7574	0.7540	0.0028	0.0042	1.00	2.51
10/20/2006	0.7594	0.7603	0.7574	0.7586	0.7614	0.7559	0.0011	-0.0015	0.7562	0.7514	0.7586	0.7549	0.0024	0.0035	1.00	0.73
10/23/2006	0.7587	0.7613	0.7566	0.7570	0.7598	0.7553	-0.0015	-0.0013	0.7568	0.7527	0.7588	0.7555	0.0020	0.0028	1.00	0.14
10/24/2006	0.7570	0.7590	0.7559	0.7577	0.7594	0.7525	0.0004	-0.0034	0.7575	0.7540	0.7579	0.7565	0.0004	0.0025	1.00	-0.09
10/25/2006	0.7583	0.7622	0.7576	0.7618	0.7649	0.7594	0.0027	0.0018	0.7589	0.7559	0.7602	0.7592	0.0013	0.0033	1.00	2.20
10/26/2006	0.7612	0.7644	0.7605	0.7642	0.7673	0.7614	0.0029	0.0009	0.7599	0.7572	0.7620	0.7607	0.0021	0.0035	1.00	2.01
10/27/2006	0.7644	0.7697	0.7624	0.7689	0.7718	0.7660	0.0021	0.0036	0.7619	0.7590	0.7657	0.7649	0.0038	0.0059	1.00	2.51
10/30/2006	0.7684	0.7703	0.7675	0.7700	0.7733	0.7668	0.0030	-0.0007	0.7645	0.7607	0.7684	0.7670	0.0039	0.0063	1.00	1.72
10/31/2006	0.7695	0.7754	0.7673	0.7745	0.7775	0.7715	0.0021	0.0042	0.7679	0.7627	0.7719	0.7720	0.0040	0.0093	1.00	2.67
11/01/2006	0.7735	0.7767	0.7730	0.7753	0.7784	0.7711	0.0017	-0.0019	0.7706	0.7648	0.7744	0.7737	0.0038	0.0089	1.00	0.86
11/02/2006	0.7748	0.7753	0.7706	0.7744	0.7770	0.7710	0.0017	0.0004	0.7726	0.7662	0.7746	0.7719	0.0020	0.0057	0.00	1.30
11/03/2006	0.7742	0.7748	0.7687	0.7696	0.7720	0.7663	-0.0028	-0.0024	0.7728	0.7673	0.7727	0.7697	-0.0001	0.0024	0.00	-0.72
11/06/2006	0.7697	0.7718	0.7669	0.7715	0.7734	0.7664	0.0016	-0.0005	0.7731	0.7688	0.7713	0.7711	-0.0018	0.0023	1.00	1.07
11/07/2006	0.7713	0.7762	0.7703	0.7734	0.7769	0.7706	0.0007	0.0003	0.7728	0.7704	0.7735	0.7727	0.0007	0.0023	1.00	0.89
11/08/2006	0.7738	0.7745	0.7679	0.7710	0.7729	0.7661	-0.0016	-0.0018	0.7720	0.7713	0.7718	0.7721	-0.0002	0.0008	0.00	-0.66
11/09/2006	0.7705	0.7708	0.7646	0.7679	0.7702	0.7623	-0.0006	-0.0023	0.7707	0.7716	0.7692	0.7717	-0.0015	0.0001	0.00	-1.14
11/10/2006	0.7677	0.7698	0.7661	0.7675	0.7718	0.7649	0.0020	-0.0012	0.7703	0.7715	0.7683	0.7711	-0.0020	-0.0004	1.00	0.33
11/13/2006	0.7671	0.7676	0.7616	0.7620	0.7642	0.7582	-0.0034	-0.0034	0.7684	0.7707	0.7646	0.7690	-0.0038	-0.0017	0.00	-1.93
11/14/2006	0.7621	0.7676	0.7617	0.7656	0.7689	0.7613	0.0013	-0.0004	0.7668	0.7698	0.7654	0.7689	-0.0014	-0.0009	1.00	0.12
11/15/2006	0.7652	0.7662	0.7631	0.7644	0.7665	0.7608	0.0003	-0.0023	0.7655	0.7687	0.7643	0.7663	-0.0012	-0.0024	1.00	-1.06
11/16/2006	0.7650	0.7698	0.7644	0.7664	0.7705	0.7644	0.0007	0.0000	0.7652	0.7679	0.7663	0.7674	0.0011	-0.0005	1.00	0.34
11/17/2006	0.7664	0.7693	0.7644	0.7688	0.7708	0.7645	0.0015	0.0001	0.7654	0.7679	0.7667	0.7682	0.0013	0.0003	1.00	0.70
11/20/2006	0.7690	0.7705	0.7676	0.7704	0.7734	0.7681	0.0029	0.0005	0.7671	0.7677	0.7692	0.7687	0.0021	0.0010	1.00	1.47
11/21/2006	0.7704	0.7714	0.7682	0.7711	0.7738	0.7685	0.0024	0.0003	0.7682	0.7675	0.7698	0.7691	0.0016	0.0016	1.00	1.35
11/22/2006	0.7713	0.7763	0.7705	0.7759	0.7786	0.7733	0.0023	0.0028	0.7705	0.7680	0.7737	0.7722	0.0032	0.0042	1.00	2.40
11/23/2006	0.7752	0.7756	0.7732	0.7741	0.7760	0.7710	0.0004	-0.0022	0.7721	0.7686	0.7745	0.7718	0.0024	0.0032	1.00	-0.02
11/24/2006	0.7733	0.7789	0.7732	0.7788	0.7816	0.7757	0.0027	0.0025	0.7741	0.7698	0.7770	0.7755	0.0029	0.0057	1.00	2.67
11/27/2006	0.7813	0.7816	0.7770	0.7791	0.7821	0.7769	0.0005	-0.0001	0.7758	0.7715	0.7787	0.7784	0.0029	0.0069	1.00	1.48
11/28/2006	0.7782	0.7841	0.7777	0.7836	0.7867	0.7800	0.0026	0.0023	0.7783	0.7733	0.7815	0.7823	0.0032	0.0090	1.00	2.60
11/29/2006	0.7835	0.7849	0.7818	0.7835	0.7867	0.7797	0.0018	-0.0021	0.7798	0.7752	0.7830	0.7819	0.0032	0.0067	1.00	0.93
11/30/2006	0.7834	0.7902	0.7824	0.7888	0.7921	0.7858	0.0019	0.0034	0.7828	0.7774	0.7863	0.7872	0.0035	0.0098	1.00	2.37
12/01/2006	0.7888	0.7927	0.7874	0.7890	0.7932	0.7860	0.0005	-0.0014	0.7848	0.7794	0.7886	0.7875	0.0038	0.0081	1.00	0.93
12/04/2006	0.7898	0.7907	0.7849	0.7898	0.7922	0.7857	0.0015	0.0008	0.7869	0.7814	0.7891	0.7878	0.0022	0.0064	0.00	1.70

# VantagePoint Intermarket Analysis Software - History Report

Australian Dollar / U.S. Dollar - Cash

Updated night of: 12/19/2006

Date	Open	High	Low	Close	Predicted Next Day High	Predicted Next Day Low	Predicted High Difference	Predicted Low Difference	5-day Moving Average	10-day Moving Average	Predicted 5-day Moving Average	Predicted 10-day Moving Average	Predicted Short Term Trend	Predicted Medium Term Trend	Predicted Neural Index	Strength
12/05/2006	0.7895	0.7898	0.7844	0.7861	0.7886	0.7832	-0.0012	-0.0012	0.7874	0.7829	0.7878	0.7859	0.0004	0.0030	0.00	-0.04
12/06/2006	0.7864	0.7887	0.7848	0.7851	0.7871	0.7819	-0.0016	-0.0029	0.7878	0.7838	0.7868	0.7862	-0.0010	0.0024	1.00	-0.45
12/07/2006	0.7844	0.7913	0.7836	0.7893	0.7921	0.7845	0.0008	0.0009	0.7879	0.7853	0.7882	0.7883	0.0003	0.0030	1.00	1.09
12/08/2006	0.7892	0.7930	0.7850	0.7854	0.7892	0.7825	-0.0038	-0.0025	0.7871	0.7860	0.7878	0.7870	0.0007	0.0010	0.00	-0.79
12/11/2006	0.7851	0.7859	0.7813	0.7843	0.7868	0.7785	0.0009	-0.0028	0.7860	0.7865	0.7844	0.7872	-0.0016	0.0007	0.00	-0.48
12/12/2006	0.7847	0.7877	0.7836	0.7864	0.7906	0.7834	0.0029	-0.0002	0.7861	0.7868	0.7857	0.7878	-0.0004	0.0010	1.00	1.17
12/13/2006	0.7867	0.7893	0.7848	0.7854	0.7875	0.7829	-0.0018	-0.0019	0.7862	0.7870	0.7858	0.7879	-0.0004	0.0009	1.00	-0.52
12/14/2006	0.7852	0.7876	0.7816	0.7829	0.7853	0.7784	-0.0023	-0.0032	0.7849	0.7864	0.7847	0.7861	-0.0002	-0.0003	0.00	-1.27
12/15/2006	0.7829	0.7846	0.7795	0.7814	0.7838	0.7774	-0.0008	-0.0021	0.7841	0.7856	0.7823	0.7843	-0.0018	-0.0013	0.00	-0.95
12/18/2006	0.7814	0.7838	0.7782	0.7800	0.7839	0.7772	0.0001	-0.0010	0.7832	0.7846	0.7806	0.7835	-0.0026	-0.0011	0.00	-0.24
12/19/2006	0.7799	0.7852	0.7799	0.7838	0.7875	0.7795	0.0023	-0.0004	0.7827	0.7844	0.7823	0.7848	-0.0004	0.0004	1.00	0.74

Copyright (c) 2006 Market Technologies, LLC  
All Rights Reserved

VantagePoint Intermarket Analysis Software - Chart

British Pound / U.S. Dollar - Cash

Updated night of: 12/19/2006

— Predicted  
Next  
Day  
High  
1.9710

— Predicted  
Next  
Day  
Low  
1.9591

Copyright (c) 2006 Market Technologies, LLC



# VantagePoint Intermarket Analysis Software - Chart

British Pound / U.S. Dollar - Cash

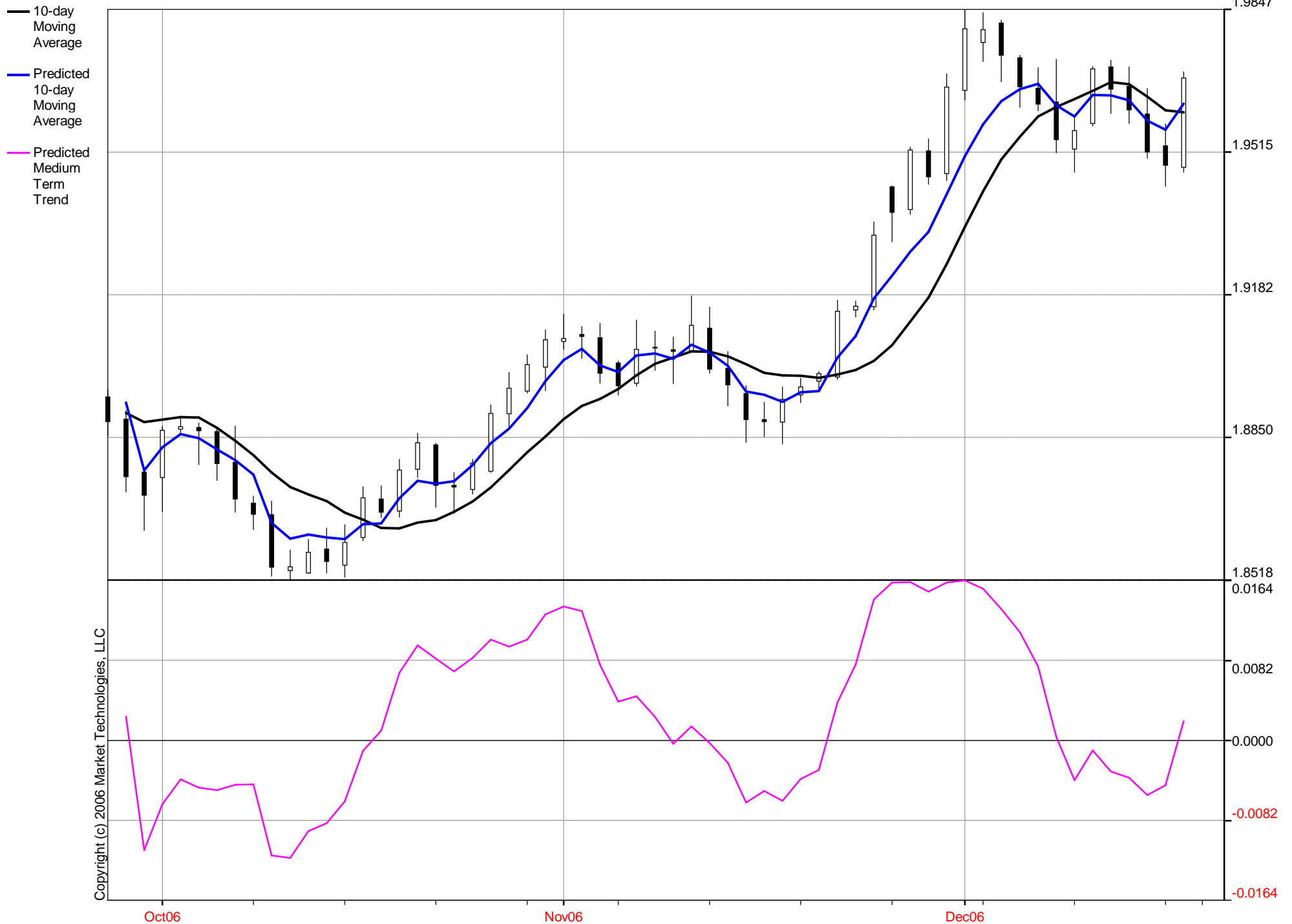
Updated night of: 12/19/2006



# VantagePoint Intermarket Analysis Software - Chart

British Pound / U.S. Dollar - Cash

Updated night of: 12/19/2006





# VantagePoint Intermarket Analysis Software - History Report

British Pound / U.S. Dollar - Cash  
Updated night of: 12/19/2006

Date	Open	High	Low	Close	Predicted Next Day High	Predicted Next Day Low	Predicted High Difference	Predicted Low Difference	5-day Moving Average	10-day Moving Average	Predicted 5-day Moving Average	Predicted 10-day Moving Average	Predicted Short Term Trend	Predicted Medium Term Trend	Predicted Neural Index	Strength
09/27/2006	1.8945	1.8962	1.8855	1.8887	1.8940	1.8841	-0.0022	-0.0014	1.8977	1.8907	1.8939	1.8932	-0.0038	0.0025	0.00	0.00
09/28/2006	1.8893	1.8913	1.8724	1.8759	1.8802	1.8696	-0.0111	-0.0028	1.8923	1.8896	1.8818	1.8857	-0.0105	-0.0039	0.00	-0.31
09/29/2006	1.8770	1.8781	1.8634	1.8716	1.8741	1.8627	-0.0040	-0.0007	1.8865	1.8886	1.8753	1.8774	-0.0112	-0.0112	0.00	-0.45
10/02/2006	1.8757	1.8877	1.8678	1.8867	1.8905	1.8781	0.0028	0.0103	1.8836	1.8892	1.8791	1.8827	-0.0045	-0.0065	1.00	0.25
10/03/2006	1.8870	1.8900	1.8858	1.8876	1.8920	1.8810	0.0020	-0.0048	1.8821	1.8898	1.8843	1.8859	0.0022	-0.0039	1.00	-0.23
10/04/2006	1.8874	1.8884	1.8787	1.8866	1.8898	1.8807	0.0014	0.0020	1.8817	1.8897	1.8877	1.8849	0.0060	-0.0048	1.00	0.10
10/05/2006	1.8864	1.8870	1.8751	1.8790	1.8834	1.8726	-0.0036	-0.0025	1.8823	1.8873	1.8826	1.8822	0.0003	-0.0051	0.00	-0.27
10/06/2006	1.8793	1.8877	1.8676	1.8707	1.8777	1.8652	-0.0100	-0.0024	1.8821	1.8843	1.8777	1.8798	-0.0044	-0.0045	0.00	-0.32
10/09/2006	1.8698	1.8714	1.8636	1.8672	1.8724	1.8601	0.0010	-0.0035	1.8782	1.8809	1.8714	1.8764	-0.0068	-0.0045	0.00	-0.22
10/10/2006	1.8671	1.8702	1.8527	1.8548	1.8598	1.8489	-0.0104	-0.0038	1.8717	1.8769	1.8620	1.8651	-0.0097	-0.0118	0.00	-0.43
10/11/2006	1.8541	1.8589	1.8518	1.8549	1.8611	1.8497	0.0022	-0.0021	1.8653	1.8735	1.8580	1.8615	-0.0073	-0.0120	0.00	-0.13
10/12/2006	1.8535	1.8613	1.8534	1.8583	1.8631	1.8536	0.0018	0.0002	1.8612	1.8717	1.8584	1.8624	-0.0028	-0.0093	1.00	0.02
10/13/2006	1.8591	1.8640	1.8535	1.8562	1.8617	1.8526	-0.0023	-0.0009	1.8583	1.8702	1.8574	1.8618	-0.0009	-0.0084	0.00	-0.21
10/16/2006	1.8553	1.8648	1.8525	1.8606	1.8656	1.8557	0.0008	0.0032	1.8570	1.8676	1.8594	1.8614	0.0024	-0.0062	1.00	0.10
10/17/2006	1.8618	1.8736	1.8610	1.8710	1.8752	1.8668	0.0016	0.0058	1.8602	1.8659	1.8669	1.8649	0.0067	-0.0010	1.00	0.26
10/18/2006	1.8707	1.8738	1.8664	1.8676	1.8716	1.8616	-0.0022	-0.0048	1.8627	1.8640	1.8675	1.8651	0.0048	0.0011	1.00	-0.29
10/19/2006	1.8679	1.8800	1.8665	1.8775	1.8808	1.8737	0.0008	0.0072	1.8666	1.8639	1.8751	1.8709	0.0085	0.0070	1.00	0.39
10/20/2006	1.8777	1.8860	1.8757	1.8838	1.8877	1.8794	0.0017	0.0037	1.8721	1.8652	1.8797	1.8750	0.0076	0.0098	1.00	0.40
10/23/2006	1.8833	1.8837	1.8688	1.8739	1.8763	1.8661	-0.0074	-0.0027	1.8748	1.8659	1.8773	1.8743	0.0025	0.0084	0.00	-0.11
10/24/2006	1.8739	1.8769	1.8674	1.8735	1.8790	1.8669	0.0021	-0.0005	1.8753	1.8677	1.8759	1.8748	0.0006	0.0071	0.00	0.26
10/25/2006	1.8729	1.8800	1.8719	1.8791	1.8833	1.8741	0.0033	0.0022	1.8776	1.8702	1.8774	1.8787	-0.0002	0.0085	1.00	0.50
10/26/2006	1.8772	1.8927	1.8769	1.8907	1.8937	1.8851	0.0010	0.0082	1.8802	1.8734	1.8854	1.8837	0.0052	0.0103	1.00	0.41
10/27/2006	1.8906	1.9002	1.8873	1.8965	1.9003	1.8876	0.0001	0.0003	1.8827	1.8774	1.8916	1.8871	0.0089	0.0097	1.00	0.08
10/30/2006	1.8959	1.9043	1.8954	1.9020	1.9055	1.8941	0.0012	-0.0013	1.8884	1.8816	1.8981	1.8919	0.0097	0.0103	1.00	0.07
10/31/2006	1.9014	1.9101	1.8960	1.9078	1.9112	1.9001	0.0011	0.0041	1.8952	1.8852	1.9041	1.8982	0.0089	0.0130	1.00	0.34
11/01/2006	1.9074	1.9138	1.9056	1.9081	1.9112	1.9017	-0.0026	-0.0039	1.9010	1.8893	1.9065	1.9031	0.0055	0.0138	1.00	-0.09
11/02/2006	1.9091	1.9109	1.9035	1.9086	1.9123	1.9035	0.0014	0.0000	1.9046	1.8924	1.9083	1.9057	0.0037	0.0133	1.00	0.29
11/03/2006	1.9083	1.9117	1.8977	1.9000	1.9038	1.8941	-0.0079	-0.0036	1.9053	1.8940	1.9042	1.9018	-0.0011	0.0078	0.00	-0.14
11/06/2006	1.9024	1.9029	1.8949	1.8971	1.9028	1.8918	-0.0001	-0.0031	1.9043	1.8963	1.9011	1.9003	-0.0032	0.0040	0.00	-0.01
11/07/2006	1.8977	1.9124	1.8970	1.9056	1.9099	1.8999	-0.0025	0.0029	1.9039	1.8995	1.9022	1.9041	-0.0017	0.0046	1.00	0.14
11/08/2006	1.9061	1.9098	1.9007	1.9059	1.9112	1.8997	0.0014	-0.0010	1.9034	1.9022	1.9033	1.9047	-0.0001	0.0025	1.00	0.07
11/09/2006	1.9055	1.9085	1.8976	1.9051	1.9097	1.8992	0.0012	0.0016	1.9027	1.9037	1.9039	1.9033	0.0012	-0.0004	0.00	0.18
11/10/2006	1.9052	1.9180	1.9052	1.9112	1.9157	1.9047	-0.0023	-0.0005	1.9050	1.9051	1.9072	1.9066	0.0022	0.0015	1.00	-0.11
11/13/2006	1.9105	1.9154	1.9000	1.9010	1.9056	1.8951	-0.0098	-0.0049	1.9058	1.9050	1.9043	1.9048	-0.0015	-0.0002	0.00	-0.37
11/14/2006	1.9012	1.9051	1.8924	1.8973	1.9033	1.8919	-0.0018	-0.0005	1.9041	1.9040	1.9010	1.9017	-0.0031	-0.0023	0.00	-0.13
11/15/2006	1.8953	1.8971	1.8839	1.8892	1.8944	1.8828	-0.0027	-0.0011	1.9008	1.9021	1.8927	1.8957	-0.0081	-0.0064	0.00	-0.27
11/16/2006	1.8892	1.8933	1.8853	1.8887	1.8949	1.8837	0.0016	-0.0016	1.8975	1.9001	1.8912	1.8950	-0.0063	-0.0051	0.00	-0.05
11/17/2006	1.8886	1.8968	1.8835	1.8939	1.8984	1.8891	0.0016	0.0056	1.8940	1.8995	1.8912	1.8933	-0.0028	-0.0062	1.00	0.11
11/20/2006	1.8950	1.8988	1.8932	1.8968	1.9014	1.8909	0.0026	-0.0023	1.8932	1.8995	1.8953	1.8955	0.0021	-0.0040	1.00	-0.05
11/21/2006	1.8982	1.9004	1.8962	1.8999	1.9032	1.8955	0.0028	-0.0007	1.8937	1.8989	1.8982	1.8959	0.0045	-0.0030	1.00	0.15
11/22/2006	1.8991	1.9170	1.8986	1.9144	1.9165	1.9094	-0.0005	0.0108	1.8987	1.8998	1.9080	1.9037	0.0093	0.0039	1.00	0.22
11/23/2006	1.9147	1.9169	1.9131	1.9156	1.9184	1.9084	0.0015	-0.0047	1.9041	1.9008	1.9125	1.9086	0.0084	0.0078	1.00	-0.05
11/24/2006	1.9155	1.9352	1.9147	1.9322	1.9336	1.9249	-0.0016	0.0102	1.9118	1.9029	1.9230	1.9174	0.0112	0.0145	1.00	0.26
11/27/2006	1.9434	1.9436	1.9306	1.9375	1.9362	1.9283	-0.0074	-0.0023	1.9199	1.9065	1.9303	1.9228	0.0104	0.0163	1.00	-0.17
11/28/2006	1.9381	1.9527	1.9370	1.9520	1.9545	1.9429	0.0018	0.0059	1.9303	1.9120	1.9408	1.9283	0.0105	0.0163	1.00	0.37
11/29/2006	1.9518	1.9546	1.9440	1.9457	1.9452	1.9387	-0.0094	-0.0053	1.9366	1.9177	1.9448	1.9330	0.0082	0.0153	1.00	-0.16
11/30/2006	1.9465	1.9697	1.9449	1.9666	1.9677	1.9562	-0.0020	0.0113	1.9468	1.9255	1.9569	1.9417	0.0101	0.0162	1.00	0.23
12/01/2006	1.9659	1.9847	1.9637	1.9802	1.9847	1.9680	0.0000	0.0043	1.9564	1.9341	1.9668	1.9505	0.0104	0.0164	1.00	0.26
12/04/2006	1.9770	1.9840	1.9726	1.9800	1.9831	1.9717	-0.0009	-0.0009	1.9649	1.9424	1.9758	1.9580	0.0109	0.0156	1.00	0.13

# VantagePoint Intermarket Analysis Software - History Report

British Pound / U.S. Dollar - Cash

Updated night of: 12/19/2006

Date	Open	High	Low	Close	Predicted Next Day High	Predicted Next Day Low	Predicted High Difference	Predicted Low Difference	5-day Moving Average	10-day Moving Average	Predicted 5-day Moving Average	Predicted 10-day Moving Average	Predicted Short Term Trend	Predicted Medium Term Trend	Predicted Neural Index	Strength
12/05/2006	1.9816	1.9822	1.9679	1.9741	1.9761	1.9683	-0.0061	0.0004	1.9693	1.9498	1.9748	1.9633	0.0055	0.0135	0.00	0.12
12/06/2006	1.9735	1.9741	1.9619	1.9667	1.9714	1.9599	-0.0027	-0.0020	1.9735	1.9551	1.9714	1.9662	-0.0021	0.0111	0.00	0.01
12/07/2006	1.9664	1.9712	1.9612	1.9627	1.9691	1.9571	-0.0021	-0.0041	1.9727	1.9598	1.9678	1.9674	-0.0049	0.0076	0.00	-0.09
12/08/2006	1.9632	1.9731	1.9513	1.9544	1.9612	1.9493	-0.0119	-0.0020	1.9676	1.9620	1.9590	1.9624	-0.0086	0.0004	0.00	-0.21
12/11/2006	1.9522	1.9595	1.9468	1.9565	1.9614	1.9467	0.0019	-0.0001	1.9629	1.9639	1.9551	1.9598	-0.0078	-0.0041	0.00	-0.16
12/12/2006	1.9582	1.9715	1.9576	1.9709	1.9748	1.9614	0.0033	0.0038	1.9622	1.9658	1.9631	1.9648	0.0009	-0.0010	1.00	0.35
12/13/2006	1.9714	1.9729	1.9605	1.9662	1.9699	1.9595	-0.0030	-0.0010	1.9621	1.9678	1.9631	1.9647	0.0010	-0.0031	1.00	-0.20
12/14/2006	1.9668	1.9714	1.9582	1.9613	1.9673	1.9557	-0.0041	-0.0025	1.9619	1.9673	1.9636	1.9635	0.0017	-0.0038	0.00	-0.30
12/15/2006	1.9604	1.9664	1.9501	1.9515	1.9581	1.9455	-0.0083	-0.0046	1.9613	1.9644	1.9581	1.9588	-0.0032	-0.0056	0.00	-0.42
12/18/2006	1.9530	1.9581	1.9435	1.9484	1.9549	1.9428	-0.0032	-0.0007	1.9597	1.9613	1.9524	1.9567	-0.0073	-0.0046	0.00	-0.19
12/19/2006	1.9480	1.9702	1.9468	1.9688	1.9710	1.9591	0.0008	0.0123	1.9592	1.9607	1.9590	1.9628	-0.0002	0.0021	1.00	0.20

Copyright (c) 2006 Market Technologies, LLC  
All Rights Reserved

# VantagePoint Intermarket Analysis Software - Chart

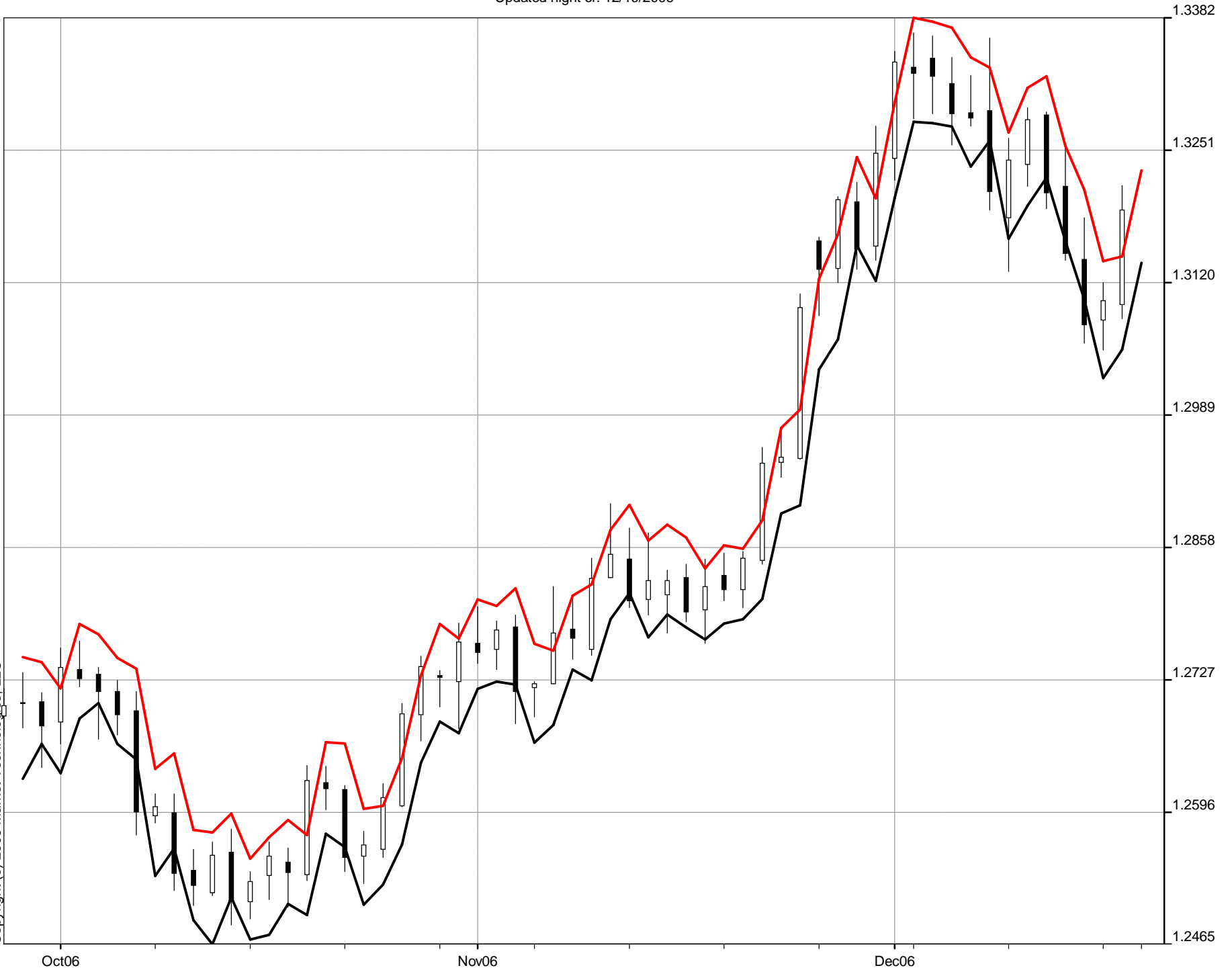
Euro / U.S. Dollar - Cash

Updated night of: 12/19/2006

— Predicted  
Next  
Day  
High  
1.3231

— Predicted  
Next  
Day  
Low  
1.3139

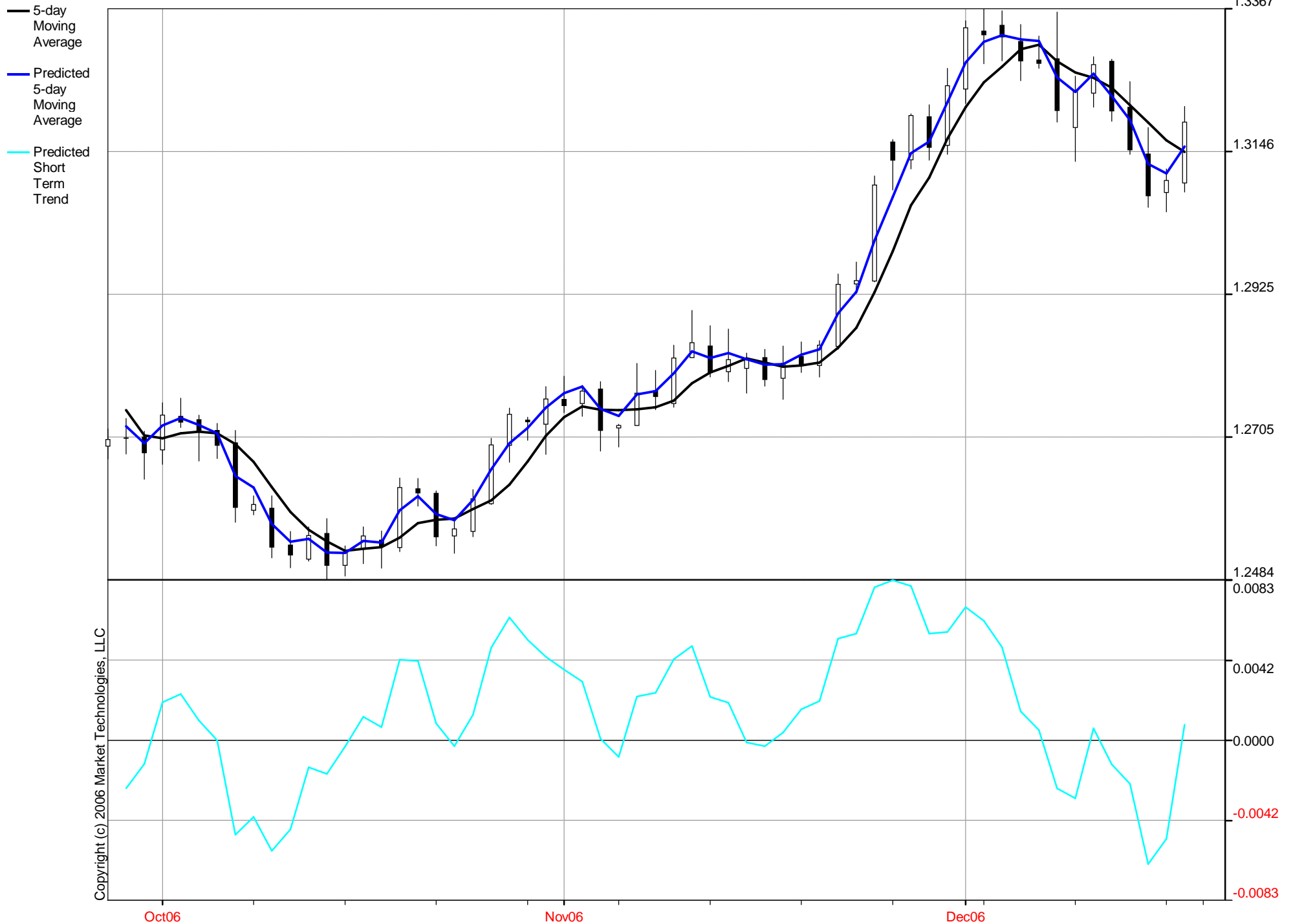
Copyright (c) 2006 Market Technologies, LLC



# VantagePoint Intermarket Analysis Software - Chart

Euro / U.S. Dollar - Cash

Updated night of: 12/19/2006



# VantagePoint Intermarket Analysis Software - Chart

Euro / U.S. Dollar - Cash  
Updated night of: 12/19/2006



# VantagePoint Intermarket Analysis Software - History Report

Euro / U.S. Dollar - Cash  
Updated night of: 12/19/2006

Date	Open	High	Low	Close	Predicted Next Day High	Predicted Next Day Low	Predicted High Difference	Predicted Low Difference	5-day Moving Average	10-day Moving Average	Predicted 5-day Moving Average	Predicted 10-day Moving Average	Predicted Short Term Trend	Predicted Medium Term Trend	Predicted Neural Index	Strength
09/27/2006	1.2691	1.2718	1.2671	1.2701	1.2744	1.2660	0.0026	-0.0011	1.2746	1.2720	1.2722	1.2740	-0.0024	0.0020	1.00	0.16
09/28/2006	1.2703	1.2734	1.2679	1.2704	1.2744	1.2663	0.0010	-0.0016	1.2728	1.2717	1.2717	1.2723	-0.0011	0.0006	1.00	0.00
09/29/2006	1.2705	1.2714	1.2640	1.2681	1.2718	1.2634	0.0004	-0.0006	1.2707	1.2719	1.2695	1.2700	-0.0012	-0.0019	0.00	-0.03
10/02/2006	1.2685	1.2758	1.2663	1.2739	1.2782	1.2688	0.0024	0.0025	1.2703	1.2722	1.2723	1.2714	0.0020	-0.0008	1.00	0.20
10/03/2006	1.2737	1.2765	1.2720	1.2728	1.2772	1.2704	0.0007	-0.0016	1.2711	1.2727	1.2735	1.2723	0.0024	-0.0004	1.00	-0.01
10/04/2006	1.2732	1.2739	1.2668	1.2715	1.2749	1.2663	0.0010	-0.0005	1.2713	1.2730	1.2724	1.2741	0.0011	0.0011	0.00	0.06
10/05/2006	1.2715	1.2726	1.2672	1.2692	1.2738	1.2648	0.0012	-0.0024	1.2711	1.2720	1.2711	1.2718	0.0000	-0.0002	0.00	-0.04
10/06/2006	1.2696	1.2715	1.2573	1.2596	1.2638	1.2532	-0.0077	-0.0041	1.2694	1.2701	1.2645	1.2669	-0.0049	-0.0032	0.00	-0.44
10/09/2006	1.2592	1.2614	1.2585	1.2601	1.2654	1.2560	0.0040	-0.0025	1.2666	1.2685	1.2627	1.2649	-0.0039	-0.0036	0.00	0.05
10/10/2006	1.2595	1.2614	1.2518	1.2535	1.2578	1.2489	-0.0036	-0.0029	1.2628	1.2669	1.2570	1.2592	-0.0058	-0.0077	0.00	-0.41
10/11/2006	1.2538	1.2559	1.2503	1.2523	1.2575	1.2465	0.0016	-0.0038	1.2589	1.2651	1.2543	1.2572	-0.0046	-0.0079	0.00	-0.27
10/12/2006	1.2516	1.2566	1.2513	1.2553	1.2594	1.2511	0.0028	-0.0002	1.2562	1.2636	1.2548	1.2566	-0.0014	-0.0070	1.00	0.01
10/13/2006	1.2556	1.2579	1.2484	1.2507	1.2550	1.2469	-0.0029	-0.0015	1.2544	1.2619	1.2526	1.2543	-0.0018	-0.0076	0.00	-0.32
10/16/2006	1.2507	1.2537	1.2490	1.2527	1.2571	1.2474	0.0034	-0.0016	1.2529	1.2598	1.2526	1.2547	-0.0003	-0.0051	1.00	0.03
10/17/2006	1.2533	1.2566	1.2509	1.2552	1.2588	1.2505	0.0022	-0.0004	1.2532	1.2580	1.2545	1.2553	0.0013	-0.0027	1.00	0.06
10/18/2006	1.2546	1.2560	1.2502	1.2536	1.2573	1.2494	0.0013	-0.0008	1.2535	1.2562	1.2542	1.2551	0.0007	-0.0011	1.00	0.02
10/19/2006	1.2534	1.2642	1.2528	1.2627	1.2665	1.2574	0.0023	0.0046	1.2550	1.2556	1.2592	1.2586	0.0042	0.0030	1.00	0.31
10/20/2006	1.2625	1.2641	1.2598	1.2619	1.2664	1.2561	0.0023	-0.0037	1.2572	1.2558	1.2614	1.2592	0.0042	0.0034	1.00	0.04
10/23/2006	1.2618	1.2622	1.2537	1.2551	1.2599	1.2504	-0.0023	-0.0033	1.2577	1.2553	1.2586	1.2576	0.0009	0.0023	0.00	-0.19
10/24/2006	1.2552	1.2577	1.2525	1.2563	1.2602	1.2524	0.0025	-0.0001	1.2579	1.2556	1.2576	1.2582	-0.0003	0.0026	1.00	0.20
10/25/2006	1.2559	1.2624	1.2551	1.2610	1.2649	1.2564	0.0025	0.0013	1.2594	1.2564	1.2607	1.2607	0.0013	0.0043	1.00	0.28
10/26/2006	1.2602	1.2703	1.2601	1.2693	1.2731	1.2644	0.0028	0.0043	1.2607	1.2578	1.2655	1.2641	0.0048	0.0063	1.00	0.42
10/27/2006	1.2692	1.2750	1.2666	1.2740	1.2782	1.2685	0.0032	0.0019	1.2631	1.2602	1.2695	1.2671	0.0064	0.0069	1.00	0.41
10/30/2006	1.2731	1.2736	1.2700	1.2729	1.2768	1.2674	0.0032	-0.0026	1.2667	1.2622	1.2719	1.2694	0.0052	0.0072	1.00	0.25
10/31/2006	1.2725	1.2783	1.2678	1.2764	1.2806	1.2718	0.0023	0.0040	1.2707	1.2643	1.2751	1.2732	0.0044	0.0089	1.00	0.46
11/01/2006	1.2763	1.2799	1.2743	1.2754	1.2800	1.2725	0.0001	-0.0018	1.2736	1.2665	1.2773	1.2747	0.0037	0.0082	1.00	0.15
11/02/2006	1.2757	1.2785	1.2737	1.2776	1.2817	1.2722	0.0032	-0.0015	1.2753	1.2680	1.2783	1.2762	0.0030	0.0082	1.00	0.31
11/03/2006	1.2779	1.2791	1.2683	1.2715	1.2762	1.2665	-0.0029	-0.0018	1.2748	1.2690	1.2749	1.2734	0.0001	0.0044	0.00	-0.08
11/06/2006	1.2719	1.2725	1.2690	1.2723	1.2756	1.2682	0.0031	-0.0008	1.2746	1.2707	1.2738	1.2743	-0.0008	0.0036	1.00	0.24
11/07/2006	1.2723	1.2819	1.2723	1.2773	1.2810	1.2737	-0.0009	0.0014	1.2748	1.2728	1.2771	1.2764	0.0023	0.0036	1.00	0.09
11/08/2006	1.2777	1.2808	1.2747	1.2768	1.2821	1.2726	0.0013	-0.0021	1.2751	1.2744	1.2776	1.2770	0.0025	0.0026	1.00	0.03
11/09/2006	1.2757	1.2847	1.2751	1.2827	1.2875	1.2787	0.0028	0.0036	1.2761	1.2757	1.2804	1.2799	0.0043	0.0042	1.00	0.37
11/10/2006	1.2828	1.2901	1.2828	1.2851	1.2900	1.2813	-0.0001	-0.0015	1.2788	1.2768	1.2838	1.2818	0.0050	0.0050	1.00	0.07
11/13/2006	1.2846	1.2877	1.2798	1.2805	1.2864	1.2769	-0.0013	-0.0029	1.2805	1.2776	1.2828	1.2824	0.0023	0.0048	0.00	-0.05
11/14/2006	1.2806	1.2872	1.2791	1.2825	1.2880	1.2791	0.0008	0.0000	1.2815	1.2782	1.2835	1.2830	0.0020	0.0048	1.00	0.15
11/15/2006	1.2811	1.2835	1.2773	1.2825	1.2867	1.2779	0.0032	0.0006	1.2827	1.2789	1.2826	1.2834	-0.0001	0.0045	1.00	0.32
11/16/2006	1.2828	1.2841	1.2784	1.2794	1.2837	1.2767	-0.0004	-0.0017	1.2820	1.2791	1.2817	1.2815	-0.0003	0.0024	0.00	-0.01
11/17/2006	1.2796	1.2846	1.2763	1.2819	1.2860	1.2783	0.0014	0.0020	1.2814	1.2801	1.2818	1.2817	0.0004	0.0016	1.00	0.18
11/20/2006	1.2830	1.2852	1.2805	1.2816	1.2856	1.2787	0.0004	-0.0018	1.2816	1.2810	1.2832	1.2816	0.0016	0.0006	1.00	-0.02
11/21/2006	1.2816	1.2854	1.2798	1.2847	1.2885	1.2807	0.0031	0.0009	1.2820	1.2818	1.2841	1.2841	0.0021	0.0023	1.00	0.27
11/22/2006	1.2845	1.2957	1.2841	1.2941	1.2976	1.2891	0.0019	0.0050	1.2843	1.2835	1.2896	1.2891	0.0053	0.0056	1.00	0.34
11/23/2006	1.2942	1.2976	1.2927	1.2947	1.2994	1.2899	0.0018	-0.0028	1.2874	1.2847	1.2930	1.2907	0.0056	0.0060	1.00	0.11
11/24/2006	1.2946	1.3109	1.2945	1.3095	1.3124	1.3034	0.0015	0.0089	1.2929	1.2871	1.3009	1.2977	0.0080	0.0106	1.00	0.40
11/27/2006	1.3161	1.3165	1.3087	1.3133	1.3168	1.3064	0.0003	-0.0023	1.2993	1.2904	1.3076	1.3019	0.0083	0.0115	1.00	0.13
11/28/2006	1.3134	1.3205	1.3120	1.3202	1.3244	1.3157	0.0039	0.0037	1.3064	1.2942	1.3144	1.3072	0.0080	0.0130	1.00	0.59
11/29/2006	1.3200	1.3219	1.3133	1.3153	1.3203	1.3121	-0.0016	-0.0012	1.3106	1.2975	1.3162	1.3093	0.0056	0.0118	0.00	0.17
11/30/2006	1.3156	1.3275	1.3142	1.3248	1.3298	1.3204	0.0023	0.0062	1.3166	1.3020	1.3223	1.3149	0.0057	0.0129	1.00	0.52
12/01/2006	1.3243	1.3349	1.3221	1.3338	1.3382	1.3279	0.0033	0.0058	1.3215	1.3072	1.3284	1.3203	0.0069	0.0131	1.00	0.59
12/04/2006	1.3333	1.3367	1.3282	1.3327	1.3378	1.3278	0.0011	-0.0004	1.3254	1.3123	1.3316	1.3245	0.0062	0.0122	1.00	0.31

# VantagePoint Intermarket Analysis Software - History Report

Euro / U.S. Dollar - Cash  
Updated night of: 12/19/2006

Date	Open	High	Low	Close	Predicted Next Day High	Predicted Next Day Low	Predicted High Difference	Predicted Low Difference	5-day Moving Average	10-day Moving Average	Predicted 5-day Moving Average	Predicted 10-day Moving Average	Predicted Short Term Trend	Predicted Medium Term Trend	Predicted Neural Index	Strength
12/05/2006	1.3342	1.3364	1.3287	1.3324	1.3372	1.3274	0.0008	-0.0013	1.3278	1.3171	1.3327	1.3280	0.0049	0.0109	1.00	0.23
12/06/2006	1.3317	1.3343	1.3256	1.3287	1.3343	1.3235	0.0000	-0.0021	1.3305	1.3205	1.3320	1.3297	0.0015	0.0092	0.00	0.15
12/07/2006	1.3288	1.3325	1.3275	1.3283	1.3333	1.3260	0.0008	-0.0015	1.3312	1.3239	1.3317	1.3314	0.0005	0.0075	1.00	0.16
12/08/2006	1.3290	1.3362	1.3192	1.3210	1.3269	1.3163	-0.0093	-0.0029	1.3286	1.3250	1.3261	1.3271	-0.0025	0.0021	0.00	-0.25
12/11/2006	1.3184	1.3263	1.3131	1.3241	1.3313	1.3196	0.0050	0.0065	1.3269	1.3261	1.3239	1.3280	-0.0030	0.0019	1.00	0.46
12/12/2006	1.3237	1.3293	1.3215	1.3281	1.3324	1.3224	0.0031	0.0009	1.3260	1.3269	1.3267	1.3279	0.0007	0.0010	1.00	0.24
12/13/2006	1.3286	1.3289	1.3193	1.3209	1.3255	1.3161	-0.0034	-0.0032	1.3245	1.3275	1.3232	1.3258	-0.0013	-0.0017	0.00	-0.30
12/14/2006	1.3215	1.3255	1.3142	1.3149	1.3212	1.3103	-0.0043	-0.0039	1.3218	1.3265	1.3195	1.3217	-0.0023	-0.0048	0.00	-0.41
12/15/2006	1.3143	1.3184	1.3060	1.3078	1.3141	1.3025	-0.0043	-0.0035	1.3192	1.3239	1.3127	1.3159	-0.0065	-0.0080	0.00	-0.46
12/18/2006	1.3083	1.3120	1.3053	1.3102	1.3146	1.3053	0.0026	0.0000	1.3164	1.3216	1.3113	1.3159	-0.0051	-0.0057	0.00	0.02
12/19/2006	1.3098	1.3216	1.3084	1.3192	1.3231	1.3139	0.0015	0.0055	1.3146	1.3203	1.3154	1.3175	0.0008	-0.0028	1.00	0.15

Copyright (c) 2006 Market Technologies, LLC  
All Rights Reserved

VantagePoint Intermarket Analysis Software - Chart

U.S. Dollar / Canadian Dollar - Cash

Updated night of: 12/19/2006

Predicted  
Next  
Day  
High  
1.1559

Predicted  
Next  
Day  
Low  
1.1488

Copyright (c) 2006 Market Technologies, LLC





# VantagePoint Intermarket Analysis Software - Chart

U.S. Dollar / Canadian Dollar - Cash

Updated night of: 12/19/2006



# VantagePoint Intermarket Analysis Software - Chart

U.S. Dollar / Canadian Dollar - Cash

Updated night of: 12/19/2006



# VantagePoint Intermarket Analysis Software - History Report

U.S. Dollar / Canadian Dollar - Cash

Updated night of: 12/19/2006

Date	Open	High	Low	Close	Predicted Next Day High	Predicted Next Day Low	Predicted High Difference	Predicted Low Difference	5-day Moving Average	10-day Moving Average	Predicted 5-day Moving Average	Predicted 10-day Moving Average	Predicted Short Term Trend	Predicted Medium Term Trend	Predicted Neural Index	Strength
09/27/2006	1.1143	1.1166	1.1090	1.1113	1.1153	1.1084	-0.0013	-0.0006	1.1153	1.1188	1.1123	1.1141	-0.0030	-0.0047	0.00	-1.08
09/28/2006	1.1116	1.1127	1.1088	1.1109	1.1138	1.1049	0.0011	-0.0039	1.1138	1.1181	1.1108	1.1120	-0.0030	-0.0061	0.00	-1.53
09/29/2006	1.1114	1.1191	1.1102	1.1180	1.1209	1.1146	0.0018	0.0044	1.1139	1.1179	1.1148	1.1149	0.0009	-0.0030	1.00	0.73
10/02/2006	1.1176	1.1221	1.1146	1.1157	1.1209	1.1136	-0.0012	-0.0010	1.1137	1.1177	1.1157	1.1161	0.0020	-0.0016	1.00	-0.04
10/03/2006	1.1153	1.1223	1.1149	1.1221	1.1263	1.1168	0.0040	0.0019	1.1156	1.1171	1.1194	1.1202	0.0038	0.0031	1.00	1.40
10/04/2006	1.1225	1.1306	1.1219	1.1263	1.1314	1.1243	0.0008	0.0024	1.1186	1.1170	1.1237	1.1223	0.0051	0.0053	1.00	1.83
10/05/2006	1.1271	1.1289	1.1241	1.1257	1.1308	1.1221	0.0019	-0.0020	1.1216	1.1177	1.1248	1.1240	0.0032	0.0063	1.00	0.83
10/06/2006	1.1250	1.1285	1.1202	1.1260	1.1295	1.1208	0.0010	0.0006	1.1232	1.1185	1.1259	1.1242	0.0027	0.0057	0.00	0.61
10/09/2006	1.1261	1.1269	1.1214	1.1239	1.1270	1.1188	0.0001	-0.0026	1.1248	1.1193	1.1249	1.1240	0.0001	0.0047	0.00	-0.31
10/10/2006	1.1238	1.1340	1.1225	1.1325	1.1361	1.1282	0.0021	0.0057	1.1269	1.1212	1.1292	1.1282	0.0023	0.0070	1.00	2.05
10/11/2006	1.1328	1.1384	1.1327	1.1374	1.1416	1.1334	0.0032	0.0007	1.1291	1.1239	1.1343	1.1319	0.0052	0.0080	1.00	2.00
10/12/2006	1.1384	1.1387	1.1346	1.1356	1.1396	1.1319	0.0009	-0.0027	1.1311	1.1263	1.1360	1.1329	0.0049	0.0066	0.00	0.57
10/13/2006	1.1340	1.1385	1.1323	1.1376	1.1413	1.1320	0.0028	-0.0003	1.1334	1.1283	1.1367	1.1345	0.0033	0.0062	0.00	0.87
10/16/2006	1.1371	1.1396	1.1349	1.1374	1.1409	1.1333	0.0013	-0.0016	1.1361	1.1305	1.1376	1.1368	0.0015	0.0063	0.00	0.62
10/17/2006	1.1377	1.1415	1.1351	1.1405	1.1438	1.1357	0.0023	0.0006	1.1377	1.1323	1.1394	1.1389	0.0017	0.0066	0.00	1.22
10/18/2006	1.1411	1.1414	1.1356	1.1362	1.1397	1.1323	-0.0017	-0.0033	1.1375	1.1333	1.1387	1.1370	0.0012	0.0037	0.00	-0.52
10/19/2006	1.1364	1.1373	1.1267	1.1283	1.1319	1.1240	-0.0054	-0.0027	1.1360	1.1335	1.1321	1.1315	-0.0039	-0.0020	0.00	-2.05
10/20/2006	1.1270	1.1289	1.1205	1.1244	1.1272	1.1160	-0.0017	-0.0045	1.1334	1.1334	1.1278	1.1281	-0.0056	-0.0053	0.00	-2.69
10/23/2006	1.1250	1.1288	1.1243	1.1282	1.1311	1.1238	0.0023	-0.0005	1.1315	1.1338	1.1275	1.1293	-0.0040	-0.0045	0.00	-0.13
10/24/2006	1.1287	1.1323	1.1248	1.1259	1.1299	1.1241	-0.0024	-0.0007	1.1286	1.1331	1.1269	1.1276	-0.0017	-0.0055	1.00	-0.65
10/25/2006	1.1265	1.1289	1.1243	1.1253	1.1299	1.1216	0.0010	-0.0027	1.1264	1.1319	1.1265	1.1266	0.0001	-0.0053	0.47	-0.77
10/26/2006	1.1237	1.1310	1.1215	1.1227	1.1288	1.1215	-0.0022	0.0000	1.1253	1.1306	1.1246	1.1235	-0.0007	-0.0071	0.60	-0.63
10/27/2006	1.1233	1.1262	1.1181	1.1191	1.1245	1.1159	-0.0017	-0.0022	1.1242	1.1288	1.1206	1.1220	-0.0036	-0.0068	0.00	-1.47
10/30/2006	1.1195	1.1267	1.1180	1.1259	1.1298	1.1209	0.0031	0.0029	1.1238	1.1276	1.1224	1.1253	-0.0014	-0.0023	0.00	0.86
10/31/2006	1.1257	1.1288	1.1203	1.1218	1.1259	1.1191	-0.0029	-0.0012	1.1230	1.1258	1.1225	1.1229	-0.0005	-0.0029	1.00	-0.66
11/01/2006	1.1223	1.1353	1.1213	1.1334	1.1375	1.1289	0.0022	0.0076	1.1246	1.1255	1.1287	1.1287	0.0041	0.0032	0.00	1.72
11/02/2006	1.1321	1.1374	1.1304	1.1345	1.1393	1.1302	0.0019	-0.0002	1.1269	1.1261	1.1319	1.1308	0.0050	0.0047	1.00	1.36
11/03/2006	1.1335	1.1355	1.1270	1.1295	1.1335	1.1253	-0.0020	-0.0017	1.1290	1.1266	1.1314	1.1299	0.0024	0.0033	0.00	-0.78
11/06/2006	1.1298	1.1363	1.1287	1.1289	1.1362	1.1273	-0.0001	-0.0014	1.1296	1.1267	1.1312	1.1301	0.0016	0.0034	1.00	0.80
11/07/2006	1.1302	1.1308	1.1256	1.1290	1.1327	1.1226	0.0019	-0.0030	1.1311	1.1270	1.1292	1.1300	-0.0019	0.0030	0.00	-0.24
11/08/2006	1.1298	1.1327	1.1267	1.1298	1.1333	1.1327	0.0006	-0.0002	1.1303	1.1275	1.1301	1.1302	-0.0002	0.0027	1.00	0.40
11/09/2006	1.1292	1.1334	1.1284	1.1294	1.1342	1.1270	0.0008	-0.0014	1.1293	1.1281	1.1295	1.1297	0.0002	0.0016	1.00	0.45
11/10/2006	1.1296	1.1325	1.1267	1.1312	1.1345	1.1260	0.0020	-0.0007	1.1297	1.1293	1.1306	1.1312	0.0009	0.0019	0.00	0.13
11/13/2006	1.1315	1.1397	1.1305	1.1382	1.1417	1.1346	0.0020	0.0041	1.1315	1.1306	1.1347	1.1350	0.0032	0.0044	1.00	1.77
11/14/2006	1.1376	1.1404	1.1344	1.1380	1.1418	1.1334	0.0014	-0.0010	1.1333	1.1322	1.1362	1.1370	0.0029	0.0048	1.00	0.68
11/15/2006	1.1374	1.1429	1.1361	1.1399	1.1446	1.1368	0.0017	0.0007	1.1353	1.1328	1.1396	1.1390	0.0043	0.0062	1.00	1.48
11/16/2006	1.1391	1.1425	1.1368	1.1420	1.1453	1.1360	0.0028	-0.0008	1.1379	1.1336	1.1403	1.1398	0.0024	0.0062	1.00	0.86
11/17/2006	1.1425	1.1476	1.1406	1.1465	1.1499	1.1423	0.0023	0.0017	1.1409	1.1353	1.1444	1.1434	0.0035	0.0081	0.64	1.83
11/20/2006	1.1468	1.1486	1.1424	1.1474	1.1503	1.1419	0.0017	-0.0005	1.1428	1.1457	1.1457	1.1445	0.0029	0.0074	0.48	0.69
11/21/2006	1.1465	1.1494	1.1445	1.1462	1.1503	1.1427	0.0009	-0.0018	1.1444	1.1389	1.1473	1.1451	0.0029	0.0062	0.00	0.51
11/22/2006	1.1464	1.1467	1.1384	1.1406	1.1436	1.1358	-0.0031	-0.0026	1.1445	1.1399	1.1435	1.1422	-0.0010	0.0023	0.00	-1.51
11/23/2006	1.1415	1.1429	1.1397	1.1418	1.1454	1.1363	0.0025	-0.0034	1.1445	1.1412	1.1428	1.1438	-0.0017	0.0026	0.00	0.13
11/24/2006	1.1420	1.1428	1.1307	1.1355	1.1368	1.1303	-0.0060	-0.0004	1.1423	1.1416	1.1377	1.1387	-0.0046	-0.0029	0.00	-2.02
11/27/2006	1.1317	1.1351	1.1303	1.1324	1.1356	1.1235	0.0005	-0.0068	1.1393	1.1410	1.1347	1.1366	-0.0046	-0.0044	0.00	-1.98
11/28/2006	1.1335	1.1336	1.1287	1.1306	1.1324	1.1257	-0.0012	-0.0030	1.1362	1.1403	1.1317	1.1331	-0.0045	-0.0072	0.00	-2.00
11/29/2006	1.1304	1.1389	1.1296	1.1377	1.1408	1.1342	0.0019	0.0046	1.1356	1.1401	1.1355	1.1357	-0.0001	-0.0044	1.00	0.61
11/30/2006	1.1380	1.1438	1.1369	1.1413	1.1454	1.1383	0.0016	0.0014	1.1355	1.1400	1.1387	1.1385	0.0032	-0.0015	1.00	0.92
12/01/2006	1.1404	1.1468	1.1372	1.1447	1.1486	1.1397	0.0018	0.0025	1.1373	1.1398	1.1423	1.1414	0.0050	0.0016	1.00	0.93
12/04/2006	1.1449	1.1477	1.1399	1.1406	1.1458	1.1380	-0.0019	-0.0019	1.1390	1.1391	1.1421	1.1408	0.0031	0.0017	1.00	-0.06

# VantagePoint Intermarket Analysis Software - History Report

U.S. Dollar / Canadian Dollar - Cash

Updated night of: 12/19/2006

Date	Open	High	Low	Close	Predicted Next Day High	Predicted Next Day Low	Predicted High Difference	Predicted Low Difference	5-day Moving Average	10-day Moving Average	Predicted 5-day Moving Average	Predicted 10-day Moving Average	Predicted Short Term Trend	Predicted Medium Term Trend	Predicted Neural Index	Strength
12/05/2006	1.1406	1.1435	1.1381	1.1415	1.1460	1.1362	0.0025	-0.0019	1.1412	1.1387	1.1420	1.1416	0.0008	0.0029	0.00	0.38
12/06/2006	1.1425	1.1487	1.1398	1.1481	1.1510	1.1433	0.0023	0.0035	1.1432	1.1394	1.1454	1.1454	0.0022	0.0060	1.00	1.82
12/07/2006	1.1479	1.1503	1.1460	1.1490	1.1524	1.1444	0.0021	-0.0016	1.1448	1.1401	1.1471	1.1468	0.0023	0.0067	1.00	1.07
12/08/2006	1.1498	1.1518	1.1446	1.1491	1.1523	1.1449	0.0005	0.0003	1.1457	1.1415	1.1489	1.1467	0.0032	0.0052	0.00	0.58
12/11/2006	1.1492	1.1507	1.1468	1.1482	1.1520	1.1440	0.0013	-0.0028	1.1472	1.1431	1.1491	1.1476	0.0019	0.0045	1.00	0.18
12/12/2006	1.1479	1.1557	1.1456	1.1517	1.1565	1.1486	0.0008	0.0030	1.1492	1.1452	1.1512	1.1502	0.0020	0.0050	0.00	1.51
12/13/2006	1.1525	1.1573	1.1500	1.1565	1.1604	1.1512	0.0031	0.0012	1.1509	1.1471	1.1540	1.1537	0.0031	0.0066	1.00	1.74
12/14/2006	1.1569	1.1580	1.1536	1.1574	1.1602	1.1517	0.0022	-0.0019	1.1526	1.1487	1.1557	1.1553	0.0031	0.0066	1.00	0.59
12/15/2006	1.1574	1.1591	1.1530	1.1578	1.1603	1.1522	0.0012	-0.0008	1.1543	1.1500	1.1569	1.1558	0.0026	0.0058	0.00	0.25
12/18/2006	1.1577	1.1587	1.1533	1.1571	1.1595	1.1512	0.0008	-0.0021	1.1561	1.1516	1.1576	1.1569	0.0015	0.0053	0.56	-0.03
12/19/2006	1.1572	1.1580	1.1508	1.1532	1.1559	1.1488	-0.0021	-0.0020	1.1564	1.1528	1.1558	1.1553	-0.0006	0.0025	0.00	-0.98

Copyright (c) 2006 Market Technologies, LLC  
All Rights Reserved

VantagePoint Intermarket Analysis Software - Chart

U.S. Dollar / Japanese Yen - Cash

Updated night of: 12/19/2006



# VantagePoint Intermarket Analysis Software - Chart

U.S. Dollar / Japanese Yen - Cash

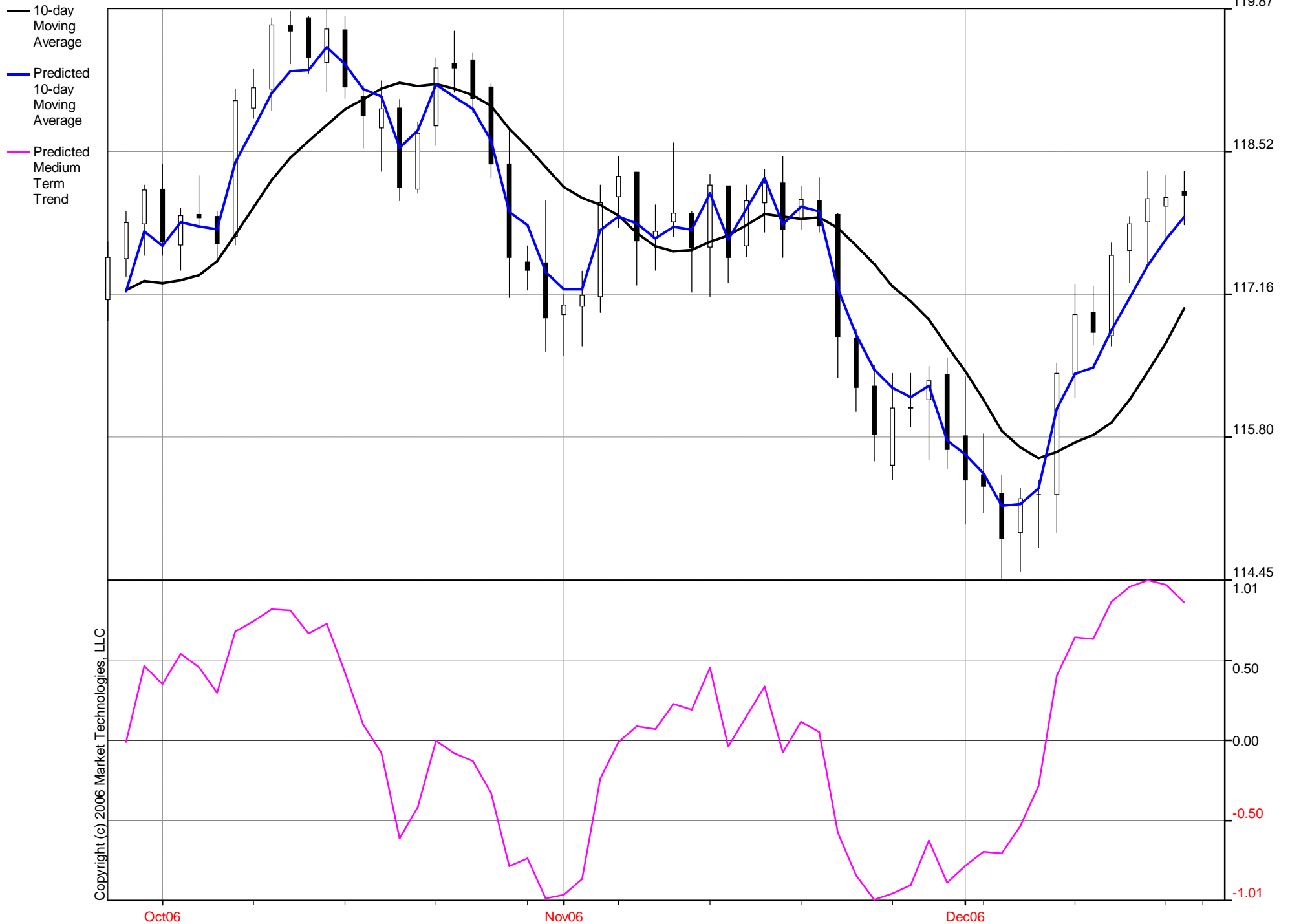
Updated night of: 12/19/2006



# VantagePoint Intermarket Analysis Software - Chart

U.S. Dollar / Japanese Yen - Cash

Updated night of: 12/19/2006



# VantagePoint Intermarket Analysis Software - History Report

U.S. Dollar / Japanese Yen - Cash

Updated night of: 12/19/2006

Date	Open	High	Low	Close	Predicted Next Day High	Predicted Next Day Low	Predicted High Difference	Predicted Low Difference	5-day Moving Average	10-day Moving Average	Predicted 5-day Moving Average	Predicted 10-day Moving Average	Predicted Short Term Trend	Predicted Medium Term Trend	Predicted Neural Index	Strength
09/27/2006	117.11	117.66	116.91	117.51	117.95	117.15	0.29	0.24	116.79	117.20	117.19	117.19	0.40	-0.01	1.00	0.25
09/28/2006	117.50	117.95	117.33	117.84	118.29	117.50	0.34	0.17	117.10	117.23	117.63	117.57	0.53	0.34	1.00	0.34
09/29/2006	117.83	118.20	117.53	118.15	118.61	117.73	0.41	0.20	117.43	117.29	117.93	117.76	0.50	0.47	1.00	0.40
10/02/2006	118.16	118.40	117.53	117.66	118.03	117.23	-0.37	-0.30	117.66	117.27	117.81	117.62	0.15	0.35	0.00	-0.24
10/03/2006	117.63	117.98	117.39	117.91	118.48	117.41	0.50	0.02	117.81	117.30	118.02	117.84	0.21	0.54	1.00	0.36
10/04/2006	117.92	118.29	117.82	117.89	118.21	117.36	-0.08	-0.46	117.89	117.34	117.89	117.80	0.00	0.46	1.00	-0.17
10/05/2006	117.90	117.95	117.46	117.64	118.06	117.26	0.11	-0.20	117.85	117.48	117.82	117.78	-0.03	0.30	0.00	-0.02
10/06/2006	117.71	119.11	117.63	119.00	119.25	118.60	0.14	0.97	118.02	117.73	118.48	118.41	0.46	0.68	1.00	0.41
10/09/2006	118.93	119.30	118.83	119.12	119.60	118.61	0.30	-0.22	118.31	117.99	118.84	118.74	0.53	0.75	1.00	0.16
10/10/2006	119.11	119.78	118.90	119.72	120.18	119.18	0.40	0.28	118.67	118.24	119.31	119.07	0.64	0.83	1.00	0.51
10/11/2006	119.71	119.85	119.35	119.66	120.14	119.05	0.29	-0.30	119.03	118.46	119.51	119.28	0.48	0.82	1.00	0.12
10/12/2006	119.78	119.80	119.26	119.41	119.80	118.95	0.00	-0.31	119.38	118.62	119.60	119.29	0.22	0.67	1.00	-0.05
10/13/2006	119.36	119.87	119.08	119.68	120.21	119.14	0.34	0.06	119.52	118.77	119.67	119.51	0.15	0.74	1.00	0.38
10/16/2006	119.67	119.80	119.02	119.13	119.50	118.65	-0.30	-0.37	119.52	118.92	119.33	119.34	-0.19	0.42	0.00	-0.23
10/17/2006	119.04	119.14	118.55	118.86	119.34	118.33	0.20	-0.22	119.35	119.01	119.09	119.11	-0.26	0.10	0.00	-0.04
10/18/2006	118.74	119.19	118.33	118.92	119.38	118.30	0.19	-0.03	119.20	119.11	118.91	119.04	-0.29	-0.07	1.00	0.03
10/19/2006	118.93	119.01	118.05	118.18	118.47	117.67	-0.54	-0.38	118.95	119.17	118.38	118.55	-0.57	-0.62	0.00	-0.54
10/20/2006	118.16	118.80	118.12	118.69	119.19	118.20	0.39	0.08	118.76	119.14	118.64	118.72	-0.12	-0.42	1.00	0.16
10/23/2006	118.76	119.41	118.57	119.31	119.68	119.09	0.27	0.52	118.79	119.16	119.03	119.15	0.24	-0.01	1.00	0.32
10/24/2006	119.35	119.66	119.08	119.31	119.70	118.86	0.04	-0.22	118.88	119.12	119.18	119.04	0.30	-0.08	1.00	-0.16
10/25/2006	119.38	119.45	118.89	119.02	119.42	118.65	-0.03	-0.24	118.90	119.05	119.10	118.92	0.20	-0.13	0.00	-0.21
10/26/2006	119.13	119.16	118.27	118.40	118.73	118.06	-0.43	-0.21	118.95	118.95	118.69	118.62	-0.26	-0.33	0.00	-0.37
10/27/2006	118.40	118.72	117.13	117.51	117.93	117.09	-0.79	-0.04	118.71	118.73	117.93	117.94	-0.78	-0.79	0.00	-0.38
10/30/2006	117.47	117.62	117.20	117.39	117.85	116.92	0.23	-0.28	118.33	118.56	117.60	117.82	-0.73	-0.74	0.00	-0.19
10/31/2006	117.46	118.05	116.62	116.94	117.20	116.60	-0.85	-0.02	117.85	118.37	117.04	117.37	-0.81	-1.00	0.00	-0.42
11/01/2006	116.97	117.16	116.58	117.06	117.55	116.49	0.39	-0.09	117.46	118.18	117.06	117.21	-0.40	-0.97	0.00	-0.03
11/02/2006	117.05	117.38	116.67	117.15	117.49	116.58	0.11	-0.09	117.21	118.08	117.03	117.21	-0.18	-0.87	1.00	-0.21
11/03/2006	117.14	118.20	116.99	118.03	118.41	117.81	0.21	0.82	117.31	118.01	117.67	117.77	0.36	-0.24	1.00	0.27
11/06/2006	118.09	118.47	117.80	118.28	118.73	117.96	0.26	0.16	117.49	117.91	117.98	117.90	0.49	-0.01	1.00	0.19
11/07/2006	118.32	118.32	117.25	117.67	118.10	117.23	-0.22	-0.02	117.64	117.74	117.93	117.83	0.29	0.09	0.00	-0.09
11/08/2006	117.69	118.01	117.39	117.76	118.27	117.41	0.26	0.02	117.78	117.62	117.89	117.69	0.11	0.07	1.00	0.16
11/09/2006	117.85	118.60	117.71	117.93	118.24	117.63	-0.36	-0.08	117.93	117.57	117.93	117.80	0.00	0.23	1.00	-0.14
11/10/2006	117.93	117.95	117.18	117.60	118.11	117.18	0.16	0.00	117.85	117.58	117.81	117.77	-0.04	0.19	0.00	0.12
11/13/2006	117.61	118.30	117.14	118.20	118.66	117.84	0.36	0.70	117.83	117.66	118.07	118.12	0.24	0.46	1.00	0.50
11/14/2006	118.19	118.19	117.27	117.51	117.86	117.03	-0.33	-0.24	117.80	117.72	117.67	117.68	-0.13	-0.04	0.00	-0.30
11/15/2006	117.62	118.20	117.52	118.05	118.51	117.72	0.31	0.20	117.86	117.82	118.03	117.97	0.17	0.15	1.00	0.30
11/16/2006	118.03	118.35	117.75	118.22	118.66	117.90	0.31	0.15	117.92	117.93	118.16	118.27	0.24	0.34	1.00	0.31
11/17/2006	118.22	118.47	117.51	117.78	118.17	117.39	-0.30	-0.12	117.95	117.90	117.94	117.83	-0.01	-0.07	0.00	-0.22
11/20/2006	117.88	118.19	117.78	118.06	118.52	117.71	0.33	-0.07	117.92	117.88	118.06	118.00	0.14	0.12	1.00	0.16
11/21/2006	118.05	118.27	117.75	117.81	118.14	117.42	-0.13	-0.33	117.98	117.89	117.91	117.95	-0.07	0.06	0.00	-0.25
11/22/2006	117.92	117.93	116.37	116.76	117.10	116.47	-0.83	0.10	117.73	117.79	117.13	117.21	-0.60	-0.58	0.00	-0.28
11/23/2006	116.74	116.83	116.05	116.28	116.68	115.76	-0.15	-0.29	117.34	117.63	116.61	116.78	-0.73	-0.85	0.00	-0.41
11/24/2006	116.29	116.49	115.58	115.83	116.09	115.41	-0.40	-0.17	116.95	117.45	116.09	116.45	-0.86	-1.00	0.00	-0.46
11/27/2006	115.54	116.41	115.40	116.08	116.62	115.66	0.21	0.26	116.55	117.24	115.97	116.27	-0.58	-0.97	1.00	0.04
11/28/2006	116.09	116.41	115.90	116.08	116.42	115.61	0.01	-0.29	116.21	117.10	115.98	116.18	-0.23	-0.92	0.00	-0.37
11/29/2006	116.16	116.48	115.59	116.34	116.76	115.93	0.28	0.34	116.12	116.92	116.28	116.29	0.16	-0.63	1.00	0.15
11/30/2006	116.40	116.56	115.51	115.69	115.98	115.26	-0.58	-0.25	116.00	116.67	115.79	115.78	-0.21	-0.89	0.00	-0.52
12/01/2006	115.82	116.38	114.98	115.40	115.87	115.18	-0.51	0.20	115.92	116.43	115.65	115.64	-0.27	-0.79	0.00	-0.22
12/04/2006	115.45	115.84	115.09	115.34	115.83	115.12	-0.01	0.03	115.77	116.16	115.47	115.46	-0.30	-0.70	0.00	-0.12



# VantagePoint Intermarket Analysis Software - History Report

U.S. Dollar / Japanese Yen - Cash

Updated night of: 12/19/2006

Date	Open	High	Low	Close	Predicted Next Day High	Predicted Next Day Low	Predicted High Difference	Predicted Low Difference	5-day Moving Average	10-day Moving Average	Predicted 5-day Moving Average	Predicted 10-day Moving Average	Predicted Short Term Trend	Predicted Medium Term Trend	Predicted Neural Index	Strength
12/05/2006	115.27	115.44	114.45	114.84	115.21	114.63	-0.23	0.18	115.52	115.86	115.05	115.15	-0.47	-0.71	0.00	-0.15
12/06/2006	114.90	115.32	114.53	115.22	115.66	114.91	0.34	0.38	115.30	115.71	115.11	115.17	-0.19	-0.54	1.00	0.22
12/07/2006	115.26	115.40	114.76	115.26	115.62	114.92	0.22	0.16	115.21	115.61	115.20	115.32	-0.01	-0.29	1.00	0.11
12/08/2006	115.26	116.51	114.90	116.41	116.71	116.11	0.20	1.21	115.41	115.67	115.94	116.07	0.53	0.40	1.00	0.41
12/11/2006	116.40	117.26	116.18	116.97	117.44	116.67	0.18	0.49	115.74	115.76	116.40	116.41	0.66	0.65	1.00	0.38
12/12/2006	116.99	117.24	116.68	116.80	117.27	116.39	0.03	-0.29	116.13	115.83	116.73	116.47	0.60	0.64	1.00	-0.03
12/13/2006	116.77	117.65	116.67	117.53	118.02	117.05	0.37	0.38	116.59	115.95	117.20	116.82	0.61	0.87	1.00	0.54
12/14/2006	117.58	117.90	117.27	117.83	118.30	117.45	0.40	0.18	117.11	116.16	117.61	117.13	0.50	0.97	1.00	0.49
12/15/2006	117.85	118.33	117.44	118.07	118.57	117.53	0.24	0.09	117.44	116.43	117.90	117.44	0.46	1.01	1.00	0.37
12/18/2006	118.00	118.29	117.70	118.08	118.62	117.51	0.33	-0.19	117.66	116.70	118.04	117.68	0.38	0.98	1.00	0.25
12/19/2006	118.14	118.33	117.82	118.10	118.54	117.56	0.21	-0.26	117.92	117.03	118.19	117.90	0.27	0.87	1.00	0.12

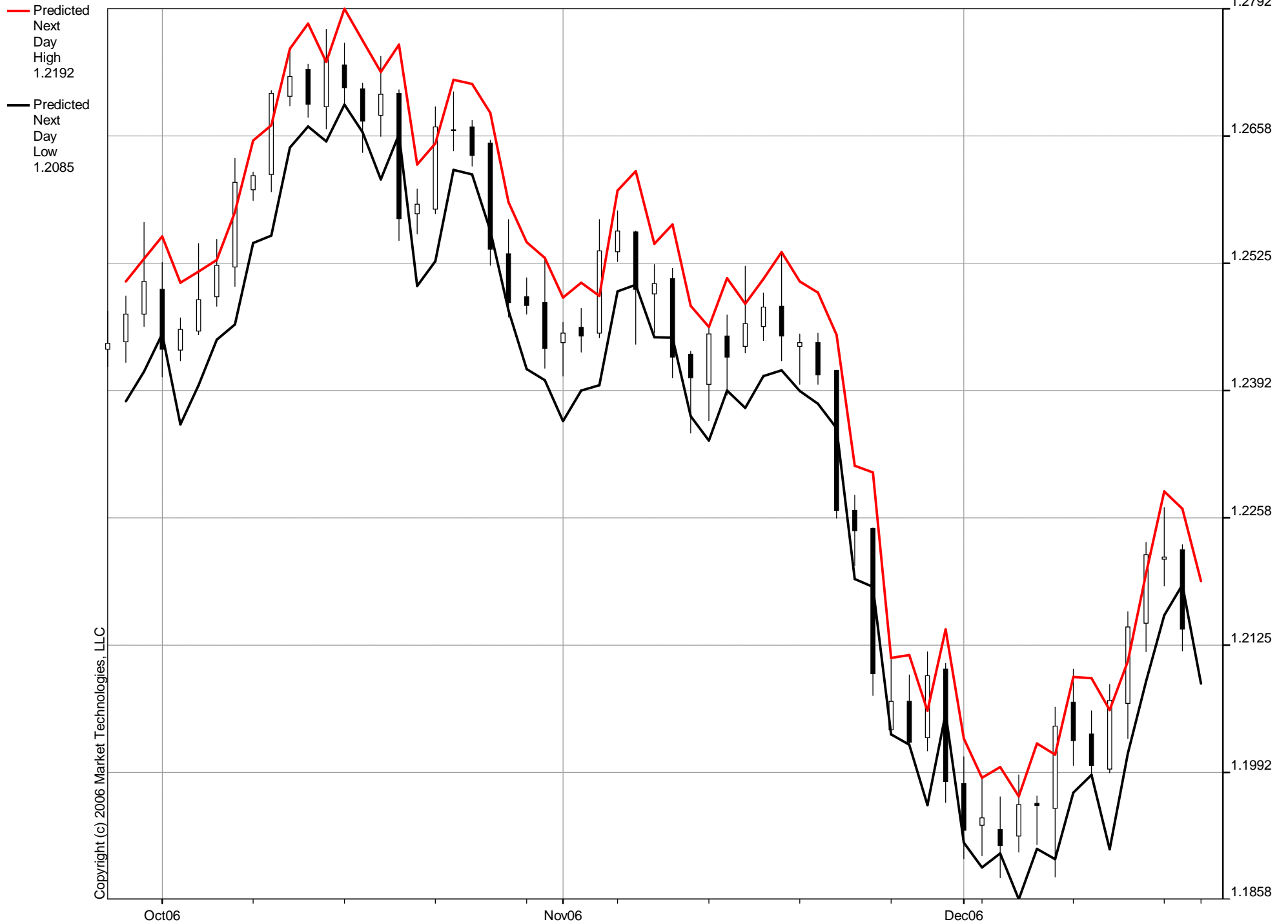
Copyright (c) 2006 Market Technologies, LLC

All Rights Reserved

VantagePoint Intermarket Analysis Software - Chart

U.S. Dollar / Swiss Franc - Cash

Updated night of: 12/19/2006



# VantagePoint Intermarket Analysis Software - Chart

U.S. Dollar / Swiss Franc - Cash

Updated night of: 12/19/2006



# VantagePoint Intermarket Analysis Software - Chart

U.S. Dollar / Swiss Franc - Cash

Updated night of: 12/19/2006



# VantagePoint Intermarket Analysis Software - History Report

U.S. Dollar / Swiss Franc - Cash  
Updated night of: 12/19/2006

Date	Open	High	Low	Close	Predicted Next Day High	Predicted Next Day Low	Predicted High Difference	Predicted Low Difference	5-day Moving Average	10-day Moving Average	Predicted 5-day Moving Average	Predicted 10-day Moving Average	Predicted Short Term Trend	Predicted Medium Term Trend	Predicted Neural Index	Strength
09/27/2006	1.2435	1.2475	1.2417	1.2441	1.2492	1.2384	0.0017	-0.0033	1.2406	1.2463	1.2439	1.2430	0.0033	-0.0033	1.00	-0.10
09/28/2006	1.2443	1.2491	1.2421	1.2472	1.2530	1.2412	0.0039	-0.0009	1.2416	1.2459	1.2462	1.2445	0.0046	-0.0014	0.00	0.14
09/29/2006	1.2472	1.2568	1.2459	1.2506	1.2553	1.2451	-0.0015	-0.0008	1.2445	1.2454	1.2503	1.2462	0.0058	0.0008	1.00	-0.08
10/02/2006	1.2498	1.2526	1.2406	1.2435	1.2505	1.2356	-0.0021	-0.0050	1.2456	1.2447	1.2476	1.2453	0.0020	0.0006	0.00	-0.22
10/03/2006	1.2434	1.2468	1.2423	1.2456	1.2516	1.2397	0.0048	-0.0026	1.2462	1.2441	1.2459	1.2466	-0.0003	0.0025	0.00	0.21
10/04/2006	1.2454	1.2546	1.2450	1.2487	1.2529	1.2445	-0.0017	-0.0005	1.2471	1.2439	1.2488	1.2470	0.0017	0.0031	1.00	-0.02
10/05/2006	1.2490	1.2550	1.2480	1.2523	1.2579	1.2461	0.0029	-0.0019	1.2481	1.2449	1.2514	1.2491	0.0033	0.0042	1.00	0.16
10/06/2006	1.2521	1.2635	1.2501	1.2610	1.2653	1.2546	0.0018	0.0045	1.2502	1.2473	1.2572	1.2538	0.0070	0.0065	1.00	0.30
10/09/2006	1.2602	1.2621	1.2591	1.2617	1.2670	1.2554	0.0049	-0.0037	1.2539	1.2498	1.2596	1.2558	0.0057	0.0060	1.00	0.20
10/10/2006	1.2618	1.2706	1.2600	1.2703	1.2750	1.2646	0.0044	0.0046	1.2588	1.2525	1.2681	1.2622	0.0093	0.0097	1.00	0.47
10/11/2006	1.2700	1.2746	1.2690	1.2721	1.2776	1.2668	0.0030	-0.0022	1.2635	1.2553	1.2713	1.2659	0.0078	0.0106	1.00	0.23
10/12/2006	1.2728	1.2734	1.2678	1.2692	1.2736	1.2653	0.0002	-0.0025	1.2669	1.2575	1.2735	1.2664	0.0066	0.0089	0.00	0.10
10/13/2006	1.2689	1.2770	1.2666	1.2740	1.2792	1.2691	0.0022	0.0025	1.2695	1.2598	1.2743	1.2693	0.0048	0.0095	1.00	0.35
10/16/2006	1.2733	1.2756	1.2693	1.2709	1.2759	1.2662	0.0003	-0.0031	1.2713	1.2626	1.2728	1.2696	0.0015	0.0070	0.00	0.06
10/17/2006	1.2708	1.2714	1.2641	1.2674	1.2726	1.2613	0.0012	-0.0028	1.2707	1.2648	1.2711	1.2687	0.0004	0.0039	0.00	0.08
10/18/2006	1.2680	1.2742	1.2658	1.2702	1.2754	1.2660	0.0012	0.0002	1.2703	1.2669	1.2696	1.2699	-0.0007	0.0030	1.00	0.15
10/19/2006	1.2703	1.2707	1.2549	1.2572	1.2628	1.2501	-0.0079	-0.0048	1.2679	1.2674	1.2622	1.2646	-0.0057	-0.0028	0.00	-0.40
10/20/2006	1.2577	1.2603	1.2556	1.2587	1.2651	1.2527	0.0048	-0.0029	1.2649	1.2672	1.2606	1.2636	-0.0043	-0.0036	0.00	0.08
10/23/2006	1.2582	1.2689	1.2577	1.2668	1.2717	1.2623	0.0028	0.0046	1.2641	1.2677	1.2649	1.2660	0.0008	-0.0017	1.00	0.20
10/24/2006	1.2665	1.2705	1.2643	1.2664	1.2713	1.2618	0.0008	-0.0025	1.2639	1.2673	1.2662	1.2657	0.0023	-0.0016	1.00	-0.10
10/25/2006	1.2668	1.2675	1.2627	1.2638	1.2683	1.2559	0.0008	-0.0068	1.2626	1.2665	1.2643	1.2644	0.0017	-0.0021	0.00	-0.25
10/26/2006	1.2651	1.2654	1.2523	1.2540	1.2589	1.2476	-0.0065	-0.0047	1.2619	1.2649	1.2592	1.2603	-0.0027	-0.0046	0.00	-0.40
10/27/2006	1.2535	1.2571	1.2469	1.2484	1.2547	1.2414	-0.0024	-0.0055	1.2599	1.2624	1.2528	1.2569	-0.0071	-0.0055	0.00	-0.38
10/30/2006	1.2490	1.2510	1.2472	1.2481	1.2531	1.2402	0.0021	-0.0070	1.2561	1.2601	1.2502	1.2543	-0.0059	-0.0058	0.00	-0.27
10/31/2006	1.2484	1.2529	1.2415	1.2436	1.2489	1.2360	-0.0040	-0.0055	1.2516	1.2577	1.2458	1.2496	-0.0058	-0.0081	0.00	-0.47
11/01/2006	1.2442	1.2463	1.2407	1.2452	1.2505	1.2392	0.0042	-0.0015	1.2479	1.2552	1.2447	1.2473	-0.0032	-0.0079	0.00	-0.04
11/02/2006	1.2458	1.2478	1.2432	1.2449	1.2491	1.2397	0.0013	-0.0035	1.2460	1.2540	1.2451	1.2465	-0.0009	-0.0075	0.00	-0.18
11/03/2006	1.2452	1.2571	1.2447	1.2538	1.2601	1.2496	0.0030	0.0049	1.2471	1.2535	1.2504	1.2509	0.0033	-0.0026	1.00	0.23
11/06/2006	1.2537	1.2580	1.2527	1.2559	1.2622	1.2503	0.0042	-0.0024	1.2487	1.2524	1.2549	1.2524	0.0062	0.0000	1.00	0.10
11/07/2006	1.2558	1.2559	1.2440	1.2498	1.2545	1.2448	-0.0014	0.0008	1.2499	1.2508	1.2528	1.2504	0.0029	-0.0004	0.00	0.01
11/08/2006	1.2493	1.2524	1.2452	1.2504	1.2566	1.2447	0.0042	-0.0005	1.2510	1.2494	1.2502	1.2504	-0.0008	0.0010	0.00	0.23
11/09/2006	1.2509	1.2520	1.2405	1.2427	1.2480	1.2365	-0.0040	-0.0040	1.2505	1.2483	1.2452	1.2472	-0.0053	-0.0011	0.00	-0.30
11/10/2006	1.2430	1.2433	1.2347	1.2405	1.2458	1.2339	0.0025	-0.0008	1.2479	1.2475	1.2421	1.2452	-0.0058	-0.0023	0.00	0.07
11/13/2006	1.2398	1.2460	1.2360	1.2451	1.2510	1.2392	0.0050	0.0032	1.2457	1.2472	1.2442	1.2450	-0.0015	-0.0022	1.00	0.23
11/14/2006	1.2449	1.2471	1.2387	1.2427	1.2483	1.2374	0.0012	-0.0013	1.2443	1.2471	1.2430	1.2435	-0.0013	-0.0036	0.00	-0.03
11/15/2006	1.2438	1.2522	1.2431	1.2462	1.2508	1.2407	-0.0014	-0.0024	1.2434	1.2472	1.2463	1.2450	0.0029	-0.0022	1.00	-0.20
11/16/2006	1.2459	1.2494	1.2444	1.2479	1.2537	1.2413	0.0043	-0.0031	1.2445	1.2475	1.2470	1.2469	0.0025	-0.0006	0.00	0.09
11/17/2006	1.2480	1.2536	1.2423	1.2449	1.2506	1.2391	-0.0030	-0.0032	1.2454	1.2466	1.2463	1.2459	0.0009	-0.0007	0.00	-0.24
11/20/2006	1.2438	1.2451	1.2398	1.2442	1.2494	1.2378	0.0043	-0.0020	1.2452	1.2454	1.2442	1.2462	-0.0010	0.0008	0.00	0.10
11/21/2006	1.2442	1.2452	1.2398	1.2408	1.2450	1.2352	-0.0002	-0.0046	1.2448	1.2445	1.2427	1.2439	-0.0021	-0.0006	0.00	-0.21
11/22/2006	1.2413	1.2413	1.2258	1.2266	1.2313	1.2194	-0.0100	-0.0064	1.2409	1.2422	1.2329	1.2363	-0.0080	-0.0059	0.00	-0.50
11/23/2006	1.2266	1.2282	1.2208	1.2245	1.2306	1.2186	0.0024	-0.0022	1.2362	1.2403	1.2289	1.2321	-0.0073	-0.0082	0.00	-0.09
11/24/2006	1.2247	1.2248	1.2072	1.2095	1.2111	1.2031	-0.0137	-0.0041	1.2291	1.2372	1.2170	1.2212	-0.0121	-0.0160	0.00	-0.67
11/27/2006	1.2036	1.2110	1.2030	1.2066	1.2115	1.2021	0.0005	-0.0009	1.2216	1.2334	1.2110	1.2152	-0.0106	-0.0182	0.00	-0.24
11/28/2006	1.2066	1.2094	1.2022	1.2023	1.2056	1.1958	-0.0038	-0.0064	1.2139	1.2293	1.2041	1.2093	-0.0098	-0.0200	0.00	-0.60
11/29/2006	1.2028	1.2118	1.2014	1.2093	1.2141	1.2054	0.0023	0.0040	1.2104	1.2257	1.2066	1.2102	-0.0038	-0.0155	1.00	-0.00
11/30/2006	1.2100	1.2106	1.1960	1.1982	1.2027	1.1918	-0.0079	-0.0042	1.2052	1.2207	1.2018	1.2037	-0.0034	-0.0170	0.00	-0.58
12/01/2006	1.1980	1.2008	1.1901	1.1931	1.1986	1.1892	-0.0022	-0.0009	1.2019	1.2155	1.1977	1.1997	-0.0042	-0.0158	0.00	-0.28
12/04/2006	1.1936	1.1988	1.1904	1.1944	1.1997	1.1907	0.0009	0.0003	1.1995	1.2105	1.1953	1.1985	-0.0042	-0.0120	0.00	-0.12

# VantagePoint Intermarket Analysis Software - History Report

U.S. Dollar / Swiss Franc - Cash

Updated night of: 12/19/2006

Date	Open	High	Low	Close	Predicted Next Day High	Predicted Next Day Low	Predicted High Difference	Predicted Low Difference	5-day Moving Average	10-day Moving Average	Predicted 5-day Moving Average	Predicted 10-day Moving Average	Predicted Short Term Trend	Predicted Medium Term Trend	Predicted Neural Index	Strength
12/05/2006	1.1932	1.1966	1.1881	1.1915	1.1966	1.1858	0.0000	-0.0023	1.1973	1.2056	1.1928	1.1956	-0.0045	-0.0100	0.00	-0.23
12/06/2006	1.1925	1.1989	1.1908	1.1958	1.2022	1.1911	0.0033	0.0003	1.1946	1.2025	1.1951	1.1957	0.0005	-0.0068	1.00	0.06
12/07/2006	1.1959	1.1967	1.1916	1.1957	1.2010	1.1901	0.0043	-0.0015	1.1941	1.1996	1.1947	1.1945	0.0006	-0.0051	0.00	0.03
12/08/2006	1.1954	1.2060	1.1882	1.2040	1.2092	1.1971	0.0032	0.0089	1.1963	1.1991	1.1998	1.1989	0.0035	-0.0002	1.00	0.27
12/11/2006	1.2065	1.2100	1.1999	1.2025	1.2091	1.1989	-0.0009	-0.0010	1.1979	1.1987	1.2020	1.1994	0.0041	0.0007	1.00	-0.04
12/12/2006	1.2032	1.2056	1.1985	1.1999	1.2057	1.1911	0.0001	-0.0074	1.1996	1.1984	1.2036	1.2000	0.0040	0.0016	0.00	-0.19
12/13/2006	1.1995	1.2084	1.1991	1.2067	1.2108	1.2012	0.0024	0.0021	1.2018	1.1982	1.2057	1.2035	0.0039	0.0053	1.00	0.25
12/14/2006	1.2064	1.2160	1.2027	1.2144	1.2200	1.2087	0.0040	0.0060	1.2055	1.1998	1.2098	1.2084	0.0043	0.0086	1.00	0.46
12/15/2006	1.2148	1.2233	1.2118	1.2220	1.2286	1.2156	0.0053	0.0038	1.2091	1.2027	1.2168	1.2132	0.0077	0.0105	1.00	0.50
12/18/2006	1.2215	1.2269	1.2187	1.2217	1.2268	1.2188	-0.0001	0.0001	1.2129	1.2054	1.2208	1.2154	0.0079	0.0100	1.00	0.18
12/19/2006	1.2225	1.2230	1.2119	1.2142	1.2192	1.2085	-0.0038	-0.0034	1.2158	1.2077	1.2205	1.2143	0.0047	0.0066	0.00	-0.08

Copyright (c) 2006 Market Technologies, LLC

All Rights Reserved