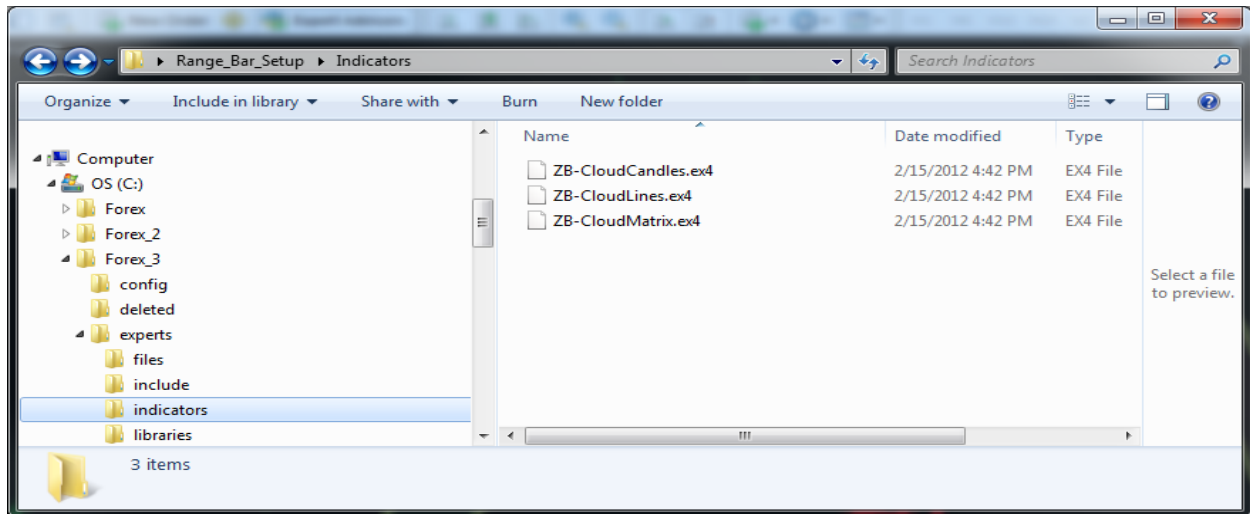
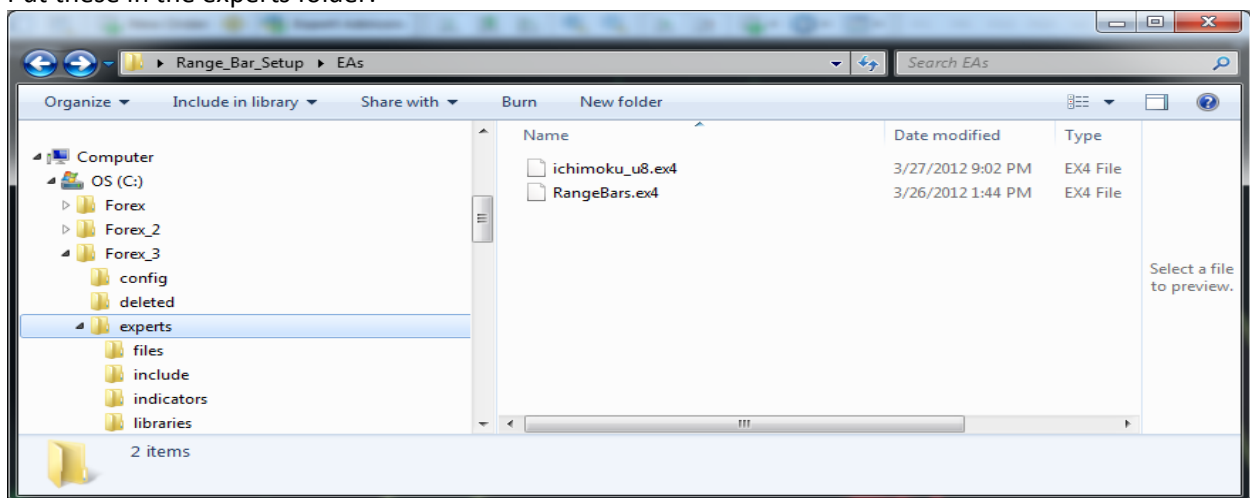


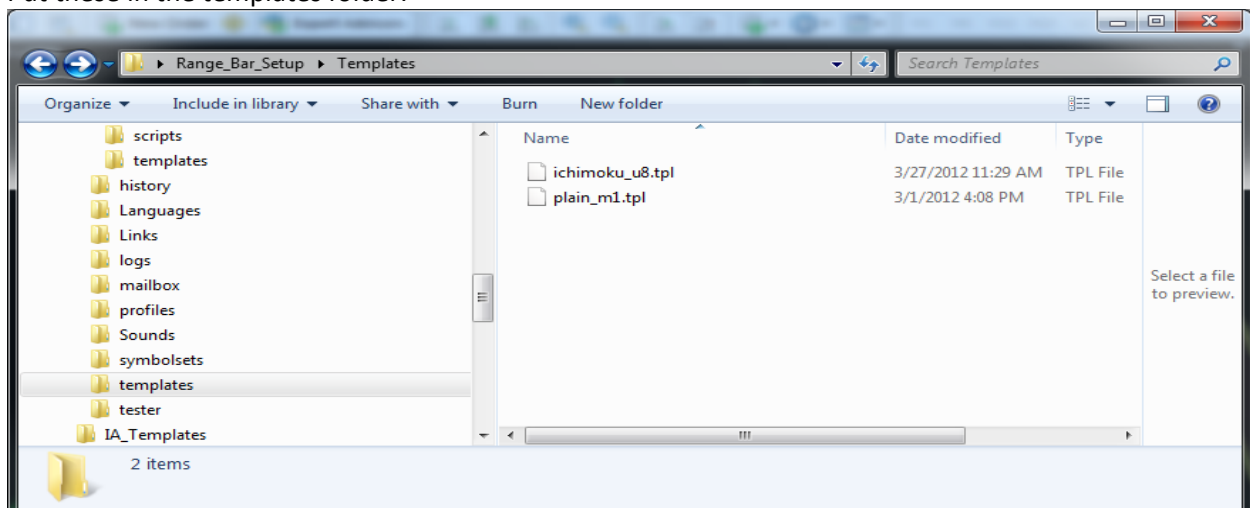
Put these in the indicator folder:



Put these in the experts folder:



Put these in the templates folder:



- 1) Open chart of desired pair.
- 2) Set to M1 time frame.
- 3) Attach "Plain_M1" template.
- 4) Hold down "Page Up" key until chart stops updating. Then turn scrolling back on.



- 5) Attach "RangeBars" EA to this chart and set up as shown.

RangeBars

Common Inputs

Common

Long & Short positions

☒ Enable alerts

☐ Disable alert once hit

Live Trading

☒ Allow live trading

☐ Ask manual confirmation

Safety

☒ Allow DLL imports

☐ Confirm DLL function calls

☒ Allow import of external experts

OK Cancel Reset

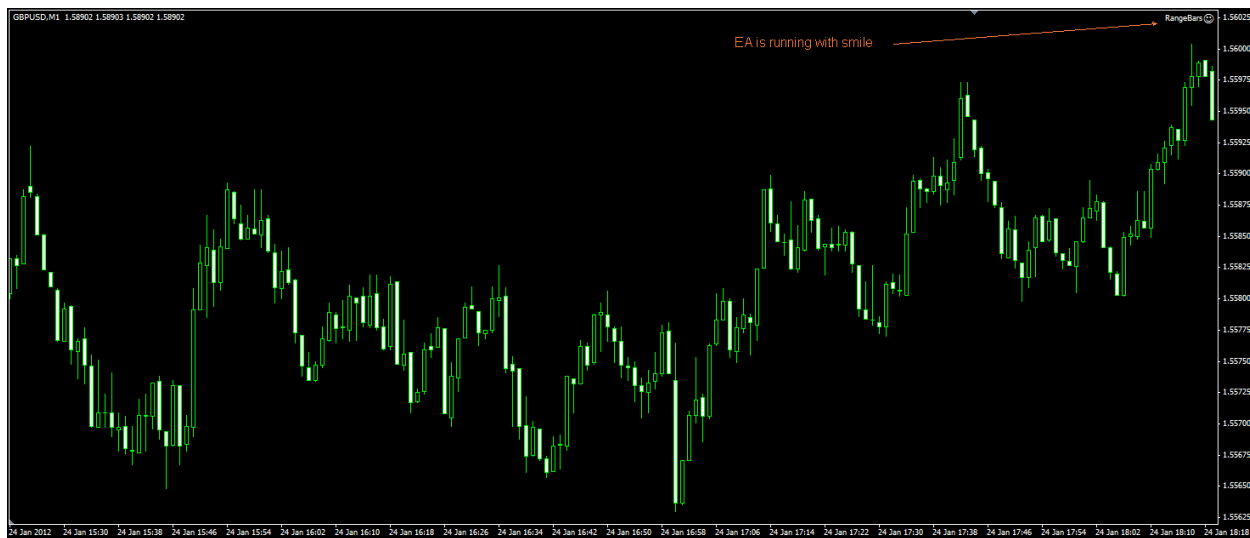
RangeBars

Common Inputs

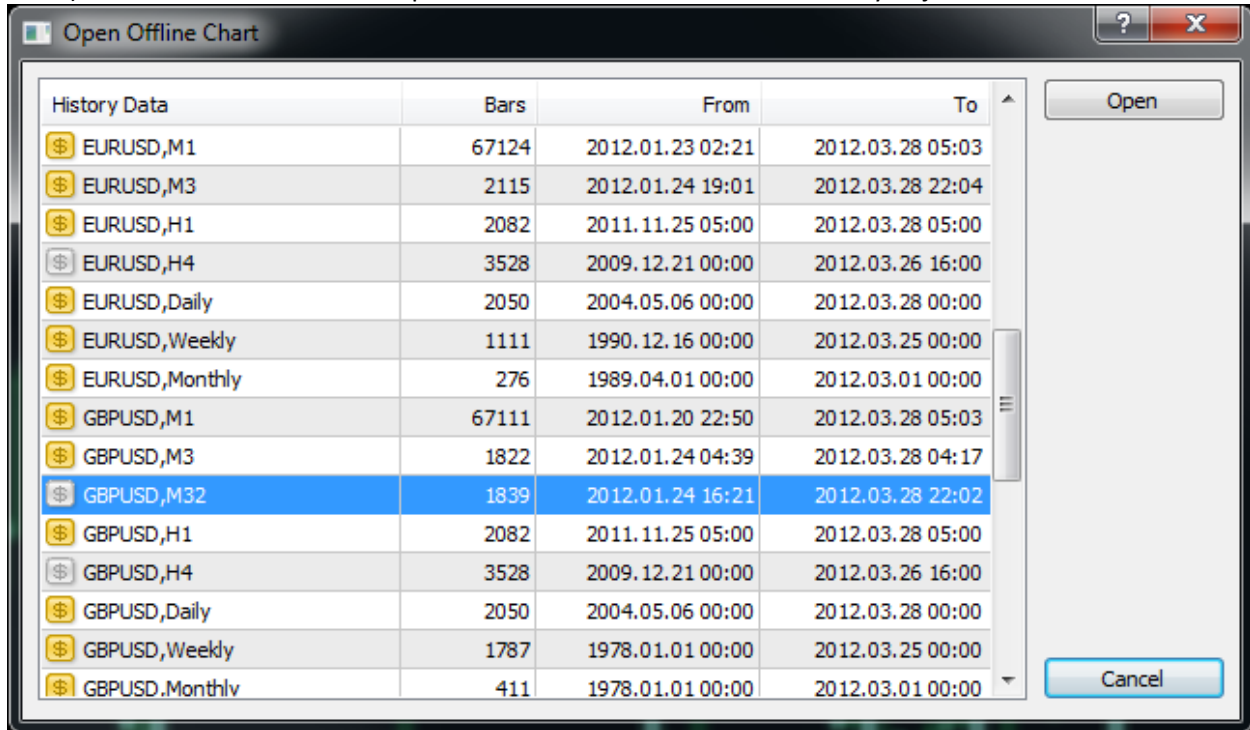
Variable	Value
estrSymbol	
eintBarSizePips	15
eintTimeframe	32
ebInResetEndOfDay	true
ebInReloadHistory	true
ebInProcessLive	true
eintLiveRefreshRate	1

Load Save

OK Cancel Reset



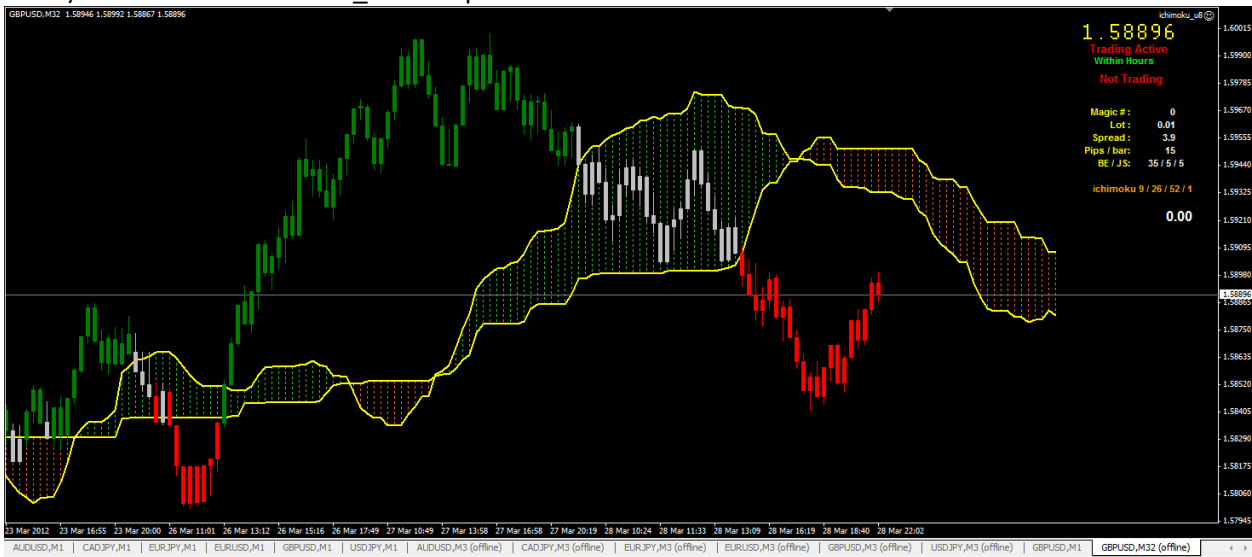
6) Under file menu select "Open Offline" and find the off line chart you just created.



7) Double click it to open it.



8) Attach the “ichimoku_u8” template.



9) Set the EA settings to what you want.