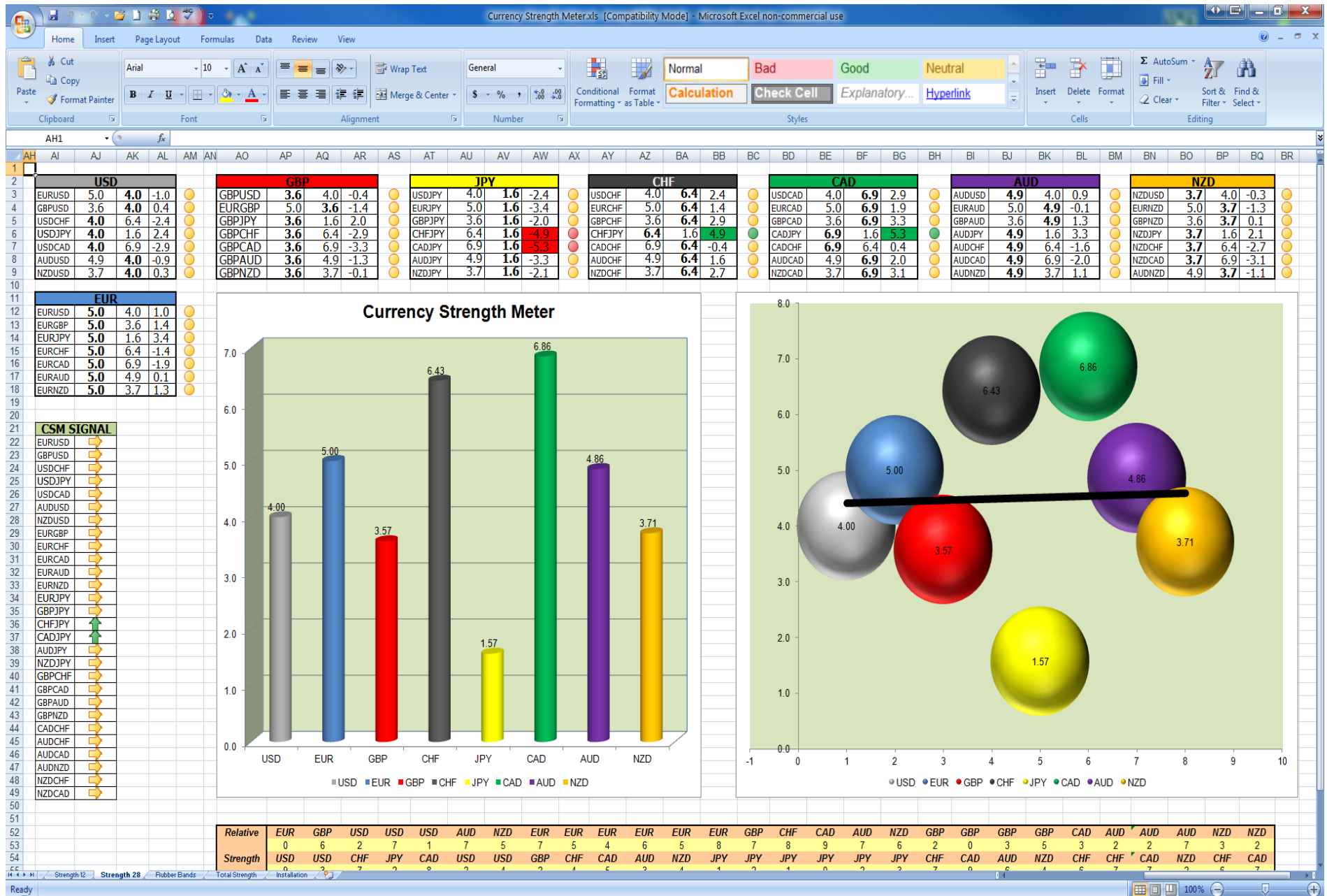


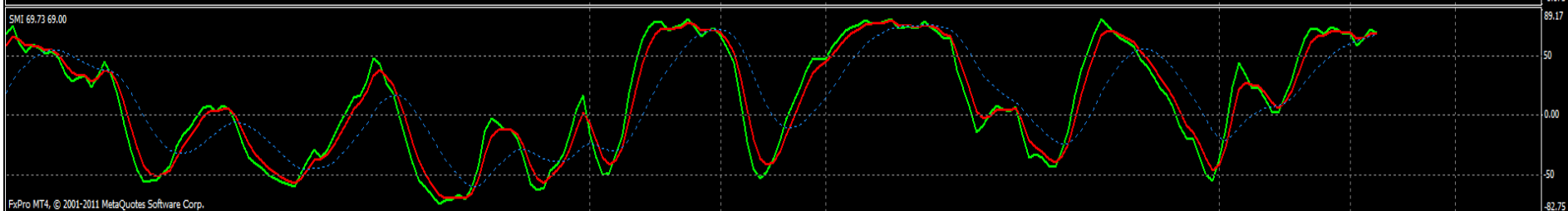
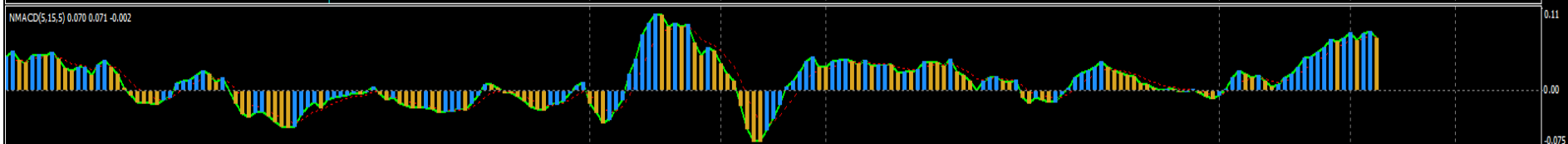
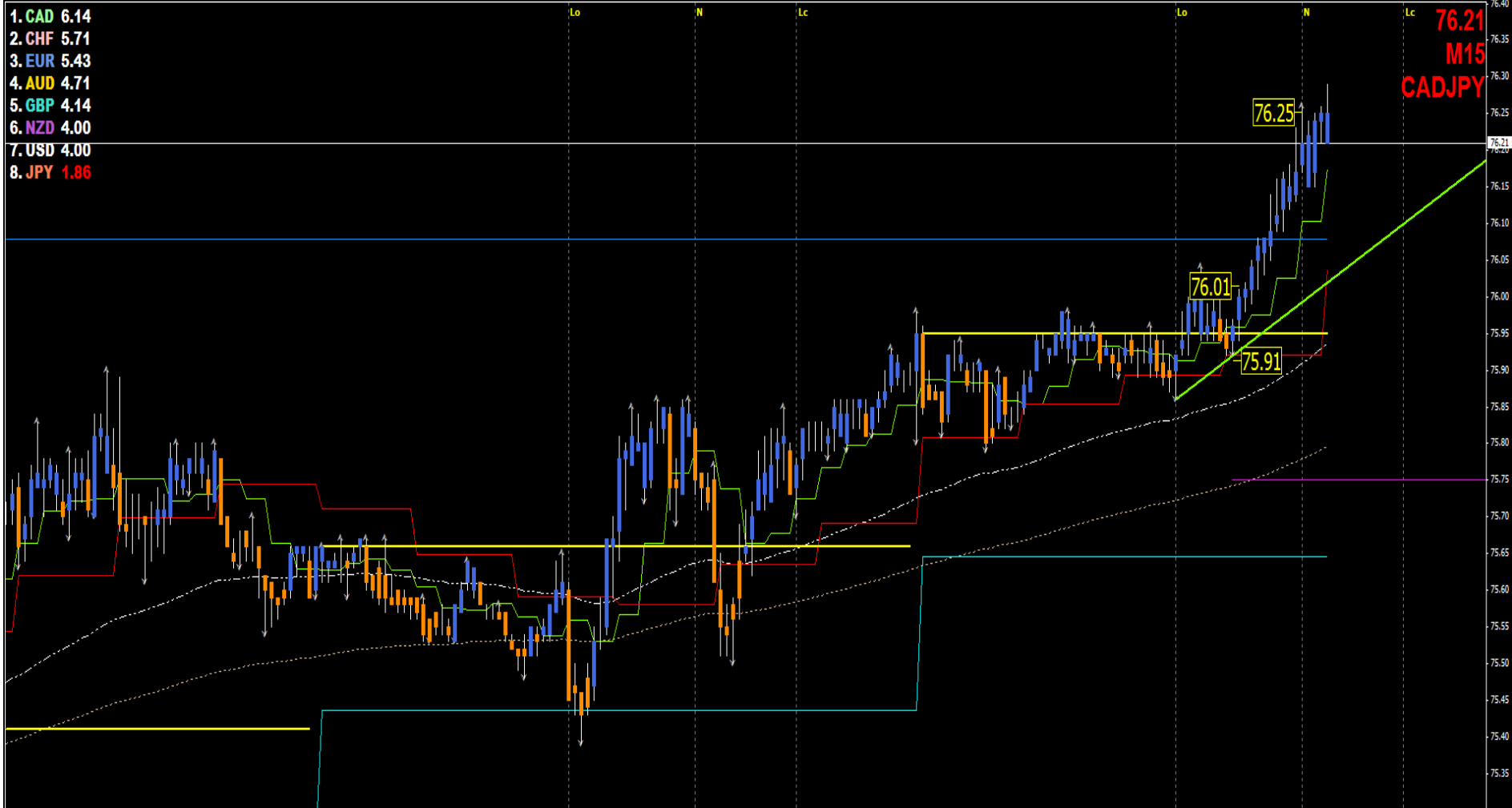
CURRENCY STRENGTH METER SPREADSHEET



From the CSM (currency strength meter) SS (spreadsheet) the choices are obvious as it shows the JPY as weak against all currencies and the only 2 that are currently showing strength above it are the CAD & CHF. Therefore I won't be wasting my time in any other trade than to concentrate on long trades in CADJPY & CHFJPY provided they align with my trading rules. See attached charts below

- 1. CAD 6.14
- 2. CHF 5.71
- 3. EUR 5.43
- 4. AUD 4.71
- 5. GBP 4.14
- 6. NZD 4.00
- 7. USD 4.00
- 8. JPY 1.86

76.21
M15
CADJPY



- 1. CHF 5.86
- 2. EUR 5.71
- 3. CAD 5.57
- 4. AUD 4.71
- 5. GBP 4.29
- 6. USD 4.29
- 7. NZD 3.71
- 8. JPY 1.86

