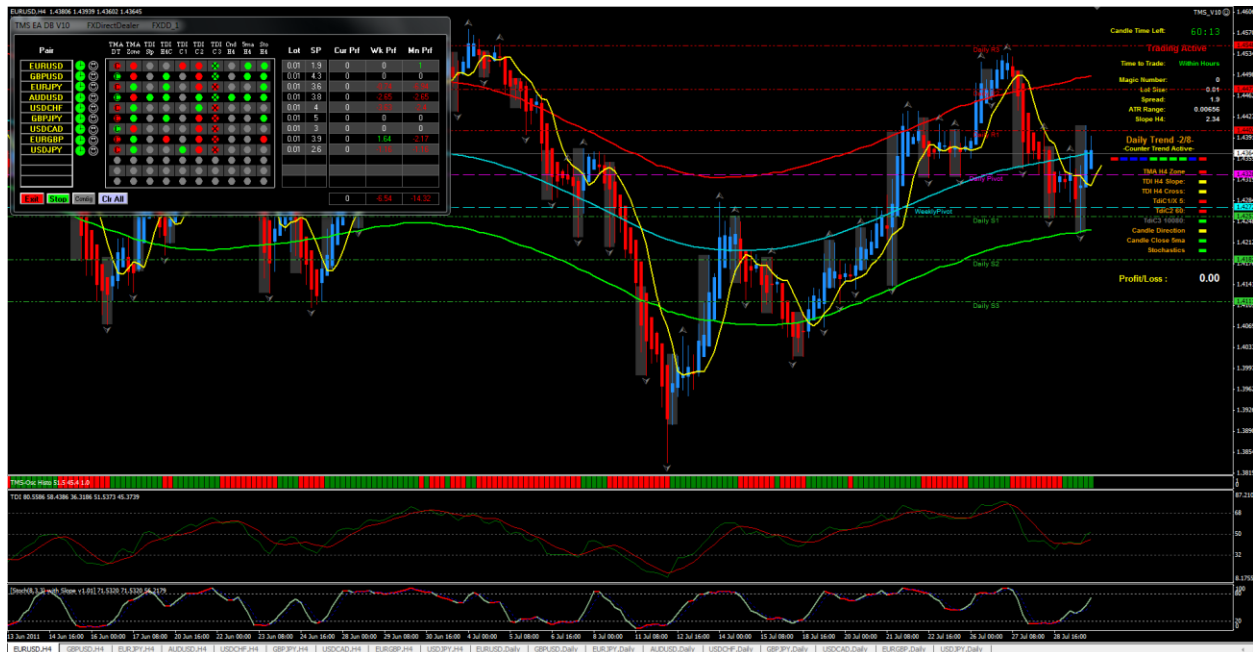


TMS\_V10.ex4      &      TMSDB\_V10.exe



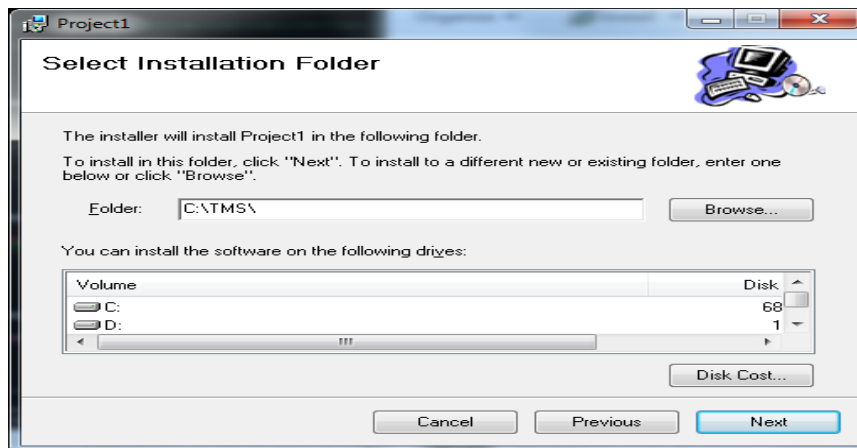
The above screen shot shows what you will see if set up according to the following instructions using the included template. You can change to a different template as the EA does not require you to have any of these on the chart. You can also put the EA on any time frame chart as the H4 time frame is hard coded into the EA. The Dash Board can also be moved around to where ever you want it as it is a separate program, you can even put it on another monitor if you have more than one as long as they are connected to the same computer.

### Installation:

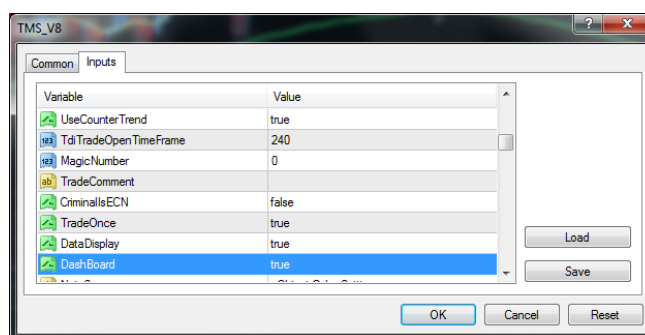
- 1) Unzip the zip file.
- 2) Place the indicators into your indicator folder
- 3) Place the expert into your experts folder
- 4) Place the template into the templates folder.
- 5) Place the TMS folder in the root of the C drive, **C:\TMS**, the program will not work if it is placed somewhere else.
- 6) Open the TMS folder and RUN by double clicking the Project1.msi installer and follow the steps of the Wizard. When asked to "Select Installation Folder" enter the following into the "Folder" Window.

C:\TMS\

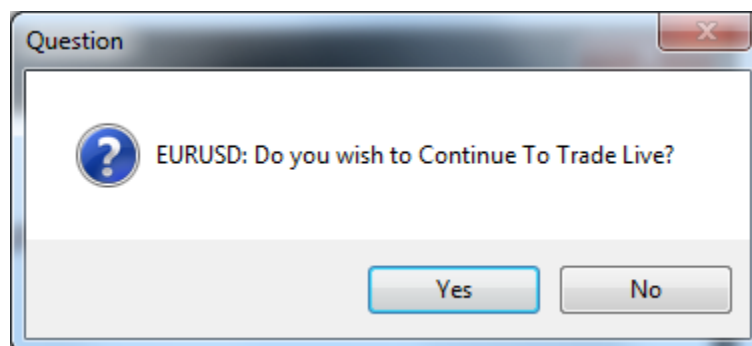
Then just follow the rest of the Wizard steps to complete the install of the Dash Board program. Once completed you may want to make a short cut to the TMSDB V10.exe program located in the TMS folder, this is the Dash Board program.



- 7) Next open your MT4 program and open a chart and select the H4 time period and then attach the **#tms\_db** template. Your chart should look similar to the screen shot above accept for the Dash Board is not present yet.
- 8) Now open the properties of the EA and make sure the Dash Board is set to true.

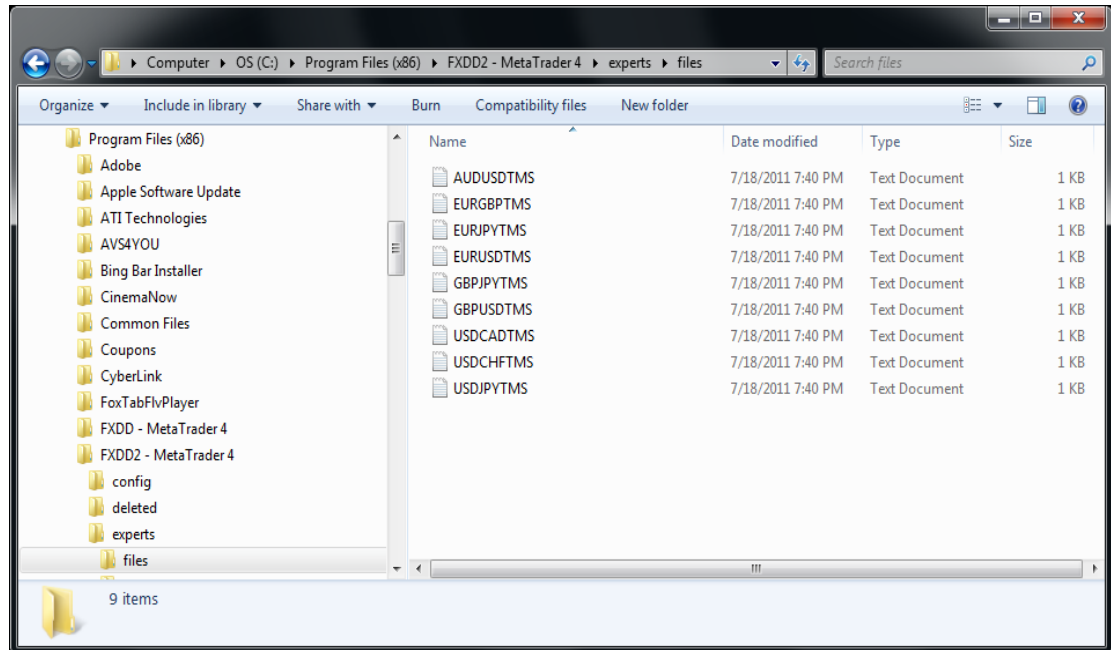


- 9) Once set to true, click OK.
- 10) For now click No when asked if you want to Continue To Trade Live.

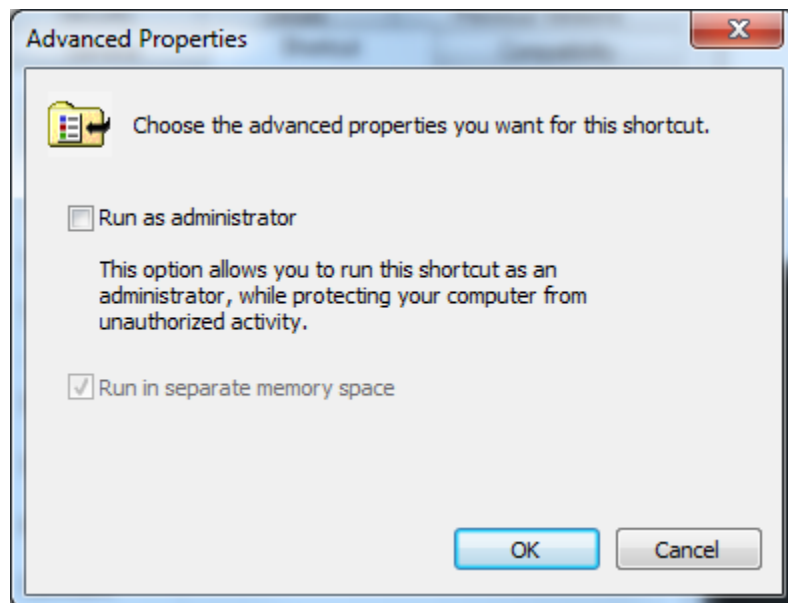


- 11) Each Dash Board will display 12 different pairs, if you monitor more pairs than 12 you can just run more Dash Boards. For now lets just install the EA on just this one pair.
- 12) Once the EA is smiling, you need to check the files folder under the experts folder to see if the text files that the Dash Board reads are being created. The one shown

below has 9 pairs being monitored. These are text files and can be read by Note Pad if you want to see what is in them. If these files are not present the Dash Board will not work. In Windows 7 you may have to run MT4 as administrator to get these files to be created. You can't go any further until these files are created in this folder.

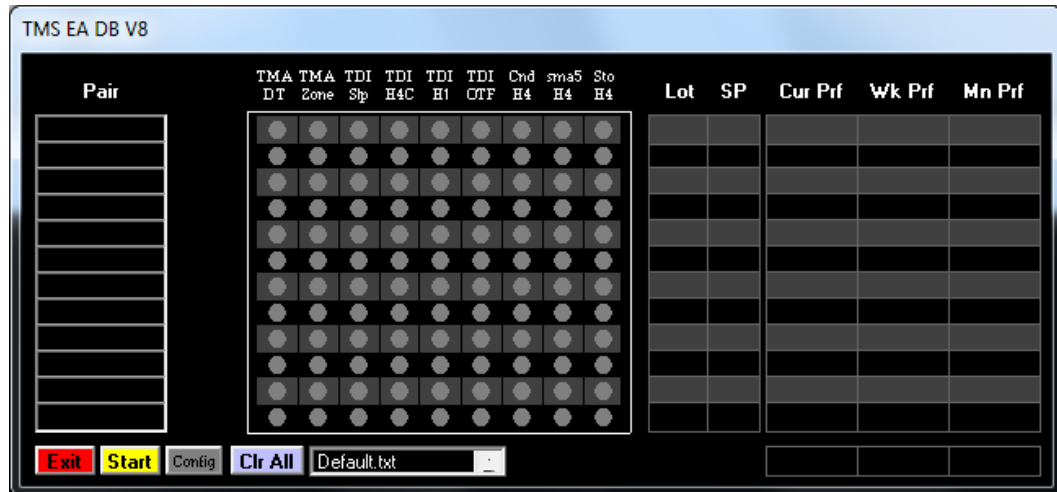


- 13) In Windows 7 these files may not be created because of security issues, to overcome this right click your MT4 icon and select properties from the list. On the Shortcut tab select advanced and put a check mark in the "Run as administrator" box, then apply this and exit.

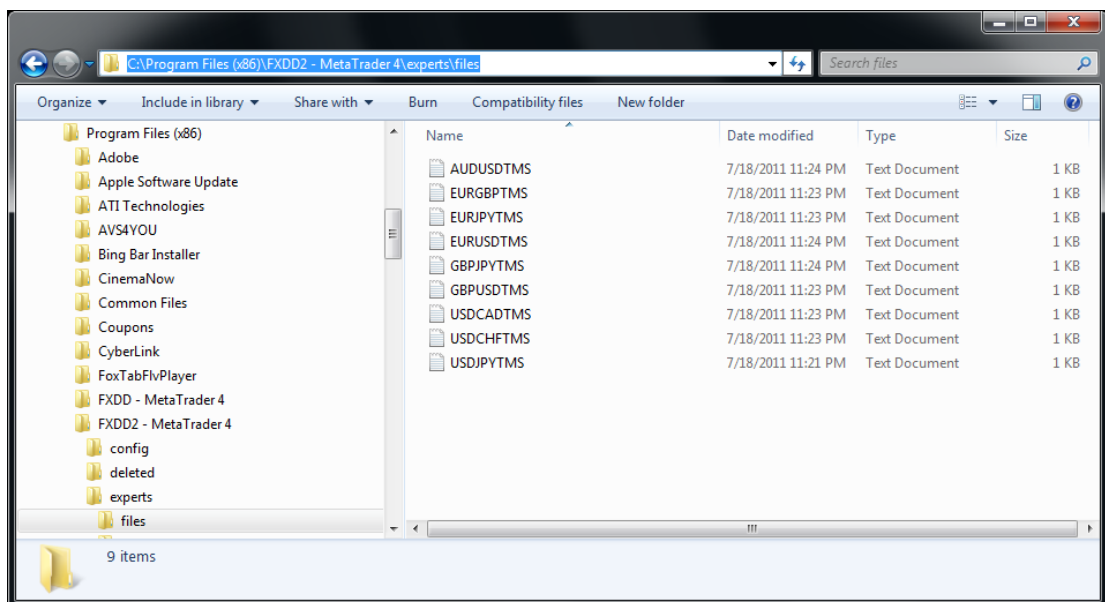


You cannot use the Dash Board until you get these files created in the files folder.

- 14) If everything is good up to this point you can now continue on with the Dash Board configuration. If You are running Windows 7 you will need to do the same thing you did in step 13 to the TMSDB\_V10.exe short cut, otherwise you may get a Blank Dash Board without any data in it.
- 15) Now double click the DB Icon to launch the DB, you may get a warning, just click "Yes". You should then get the following.



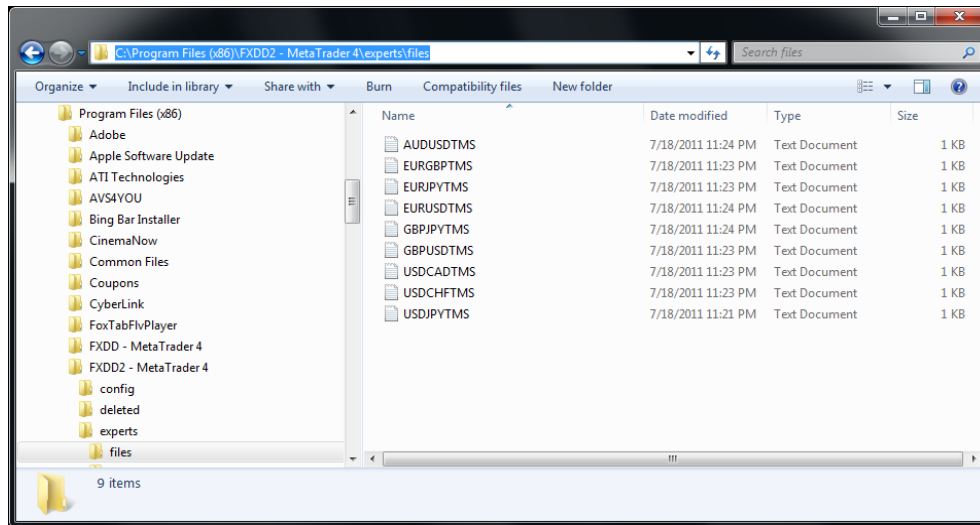
- 16) You now need to configure the Dash Board, first you need to tell it where the Data Files are located. The best way to do this is open windows explorer and browes to the files folder under the experts folder and copy this path into the DB config setting.



- 17) Click the "Config" button on the DB to open the "Path Box" and paste this path into it, at the end of the path you must add "\" or it will not work. Here is an example path.

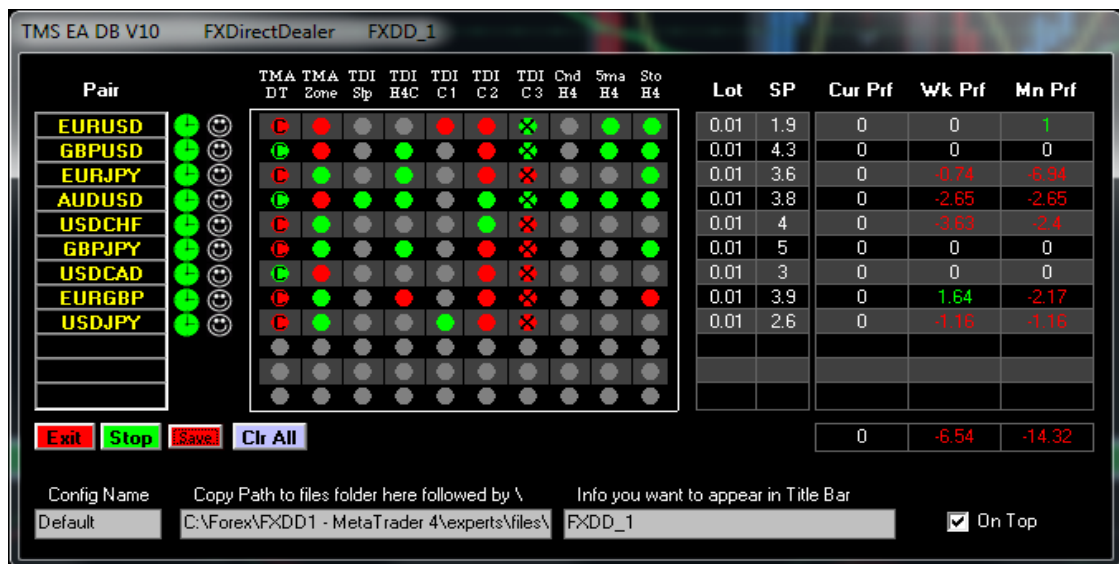
C:\Program Files (x86)\FXDD2 - MetaTrader 4\experts\files\

Just remember, if you forget to put the “\” at the end of the path, it will not work.

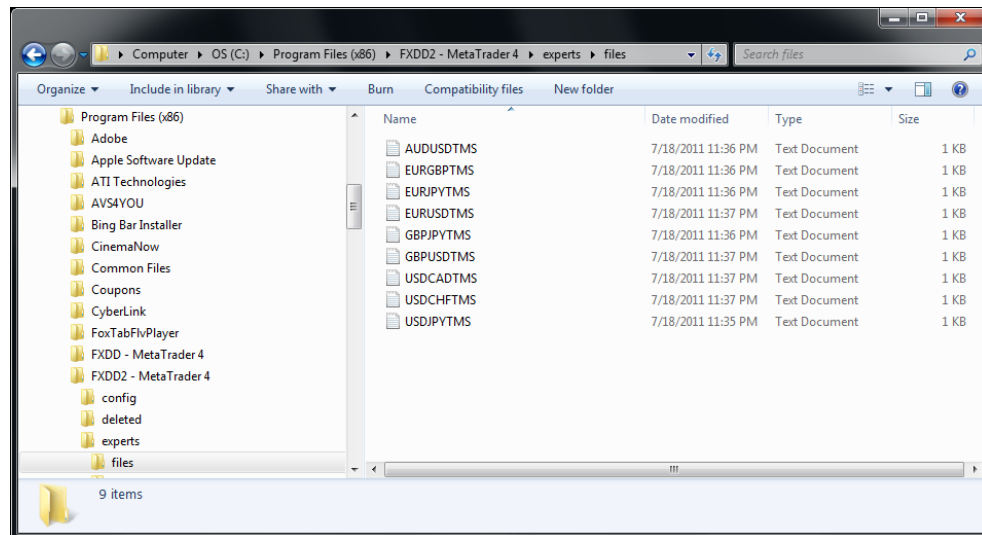


- 18) Paste this path into the “Path” config window of the DB.

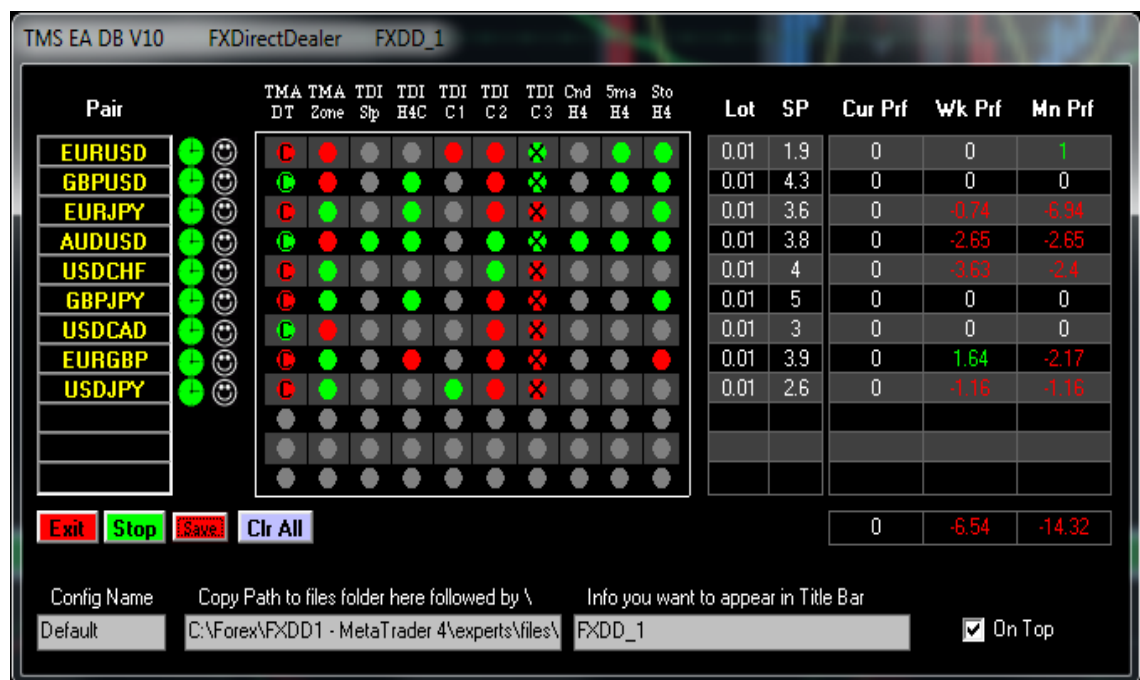
If you want the DB to stay on top of all your other Windows check the “On Top” box also. You can also give this configuration a name to be saved under at this time by entering it in the far bottom left box, for now I will just call it Default. You can also add information you will want to appear in the title bar of the Dash Board to the Right of TMS EA DB V10.



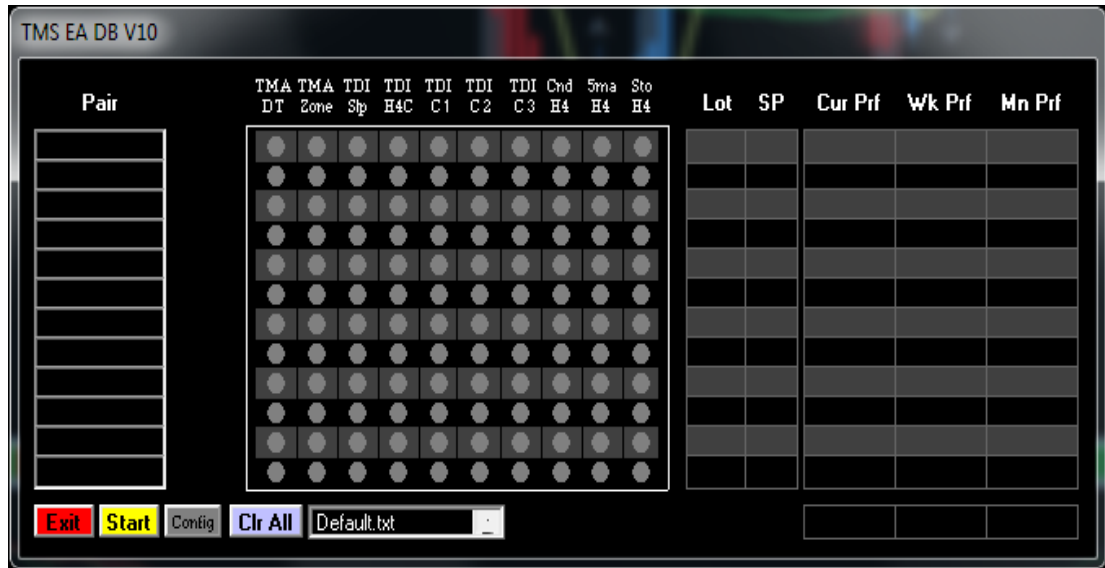
- 19) You now need to enter the “PAIRS” that you have the EA on exactly as they appear in the files folder, do not enter the “TMS” extension. Some platforms add a suffix to the name which you must also enter, they must match to work, upper and lower case sensitive. Also, don’t leave any blank boxes between Pairs, as the collection will stop and start over at the top of the list if it encounters a blank box. If you have a PAIR entered in a box that the EA is not on, there will be no file for it and the data collection will stop with a “File can’t be found error”.



- 20) Click the “Save” button to save this configuration.



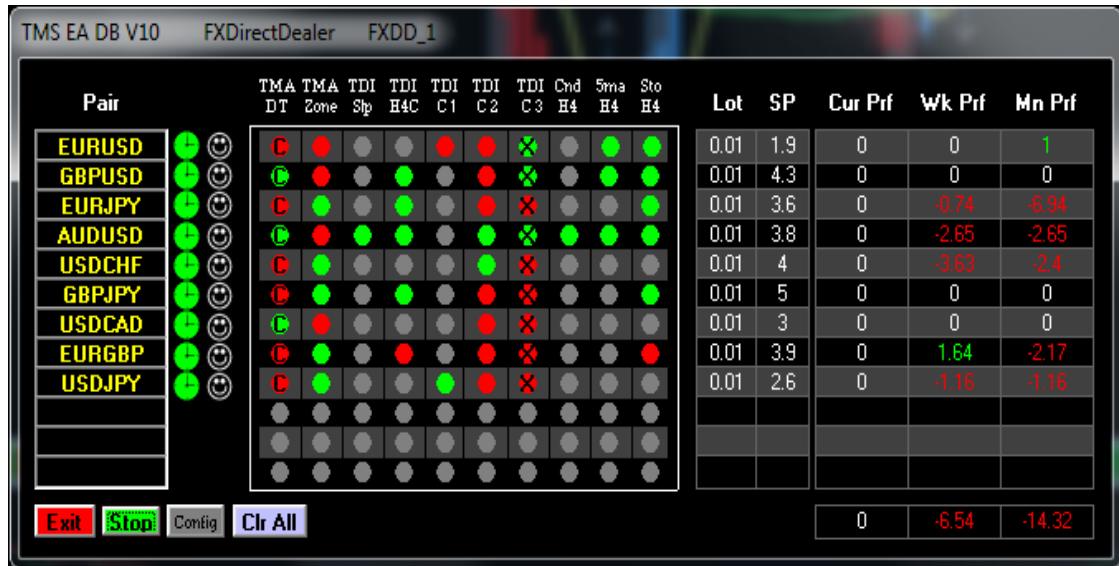
- 21) Now click the “Clr All” button and you should get a new blank DB. If you don’t get the Dash Board to open its probably because you did not put it in the “C:\TMS\” folder.



- 22) Whatever you named your configuration should appear in the scroll down list box, if needed use the small arrows on the right side of the box to find your configuration, in this case I used Default, so click the “Default.txt” and your settings should come back, if they don’t you have done something wrong.



- 23) To start the DB collecting Data click the "Start" button, the data is only collected once every minute so you need to wait one minute before the data is put into the DB Window.



- 24) The DB is easy to figure out as the alerts match up to the same ones shown on the chart if you have them turned on. The clock will be green if you are within your time settings or otherwise it will be red. The smiley face lets you know if the Robot is suspended or trading (smile or frown). The “C” in the first alert tells you that you have “UseCounterTrend” set to true in the EA Properties. If there is an “X” in any of the C1 – C3 TDI spaces it means that alert is disabled. It will still display what it is but will not be used as part of the trade signal alert.

## EA Settings

### AutoRestartRobot:

Set this to true if you want the Robot to Restart by itself after a trade closes. It will not Restart if there is a Long or Short Signal present, it will wait for a new Signal before restarting. **“TradeOnce” must be set to true for this to work.**

Lot:

Trading Lot size the EA will use when sending a trade to the Broker.

## Slippage:

In a fast moving market where the price is changing fast you may want to increase this if you start getting “invalid price errors” from your broker.

TakeProfit:

TakeProfit in pips that will be sent to the Broker

This setting if not set to "0" will over ride all other TP settings.

## TPmultiplier:

Take Profit setting based on the ATR times this number.

keep at "0" if not used.



#### StopLoss:

StopLoss in pips that will be sent to the Broker.

**This setting if not set to "0" will over ride all other SL settings.**

#### StopLoss5ma:

StopLoss in pips above or below 5ma line. **Keep at "0" if not used.**

#### SLmultiplier:

StopLoss setting based on the ATR times this number. Keep a number in this setting as explained in "UseLastFractalSL".

#### UseLastFractalSL:

Set this to true if you want to use the last High or Low fractal as your Stop Loss. At times a fractal may not have formed that will be " $\leq$ Bid" for a Buy or " $\geq$ Bid" for a Sell, in either of these cases the SLmultiplier setting will be used, so keep a number in the "SLmultiplier" setting just in case.

#### FracOffset:

This is the number of pips you want to be above or below your fractal stop loss if used. This should be a positive number, it will be added to the last High Fractal or subtracted from the last Low Fractal to get your Stop Loss.

**Remember:** "StopLoss" will over ride all other Stop Loss settings if not left at "0".

#### ZoneMultiplier:

This refers to the trade zone in which the EA will trade based on the TMA Channel as shown below. This is a percentage of the distance between the middle of the channel and either the high or low of the channel. Don't use any negative numbers, 0 to 150 would be OK. If you enter 50 and you get a buy signal the price needs to be less than or equal to the 50 line in the Buy Zone. The Buy zone is the area below the TMA Middle Line and the Sell Zone is the area above the TMA Middle Line. The distance from the middle line to either top or bottom of the channel is  $2 * ATR$ . No Buys will be taken if the price is above the middle line and no Sells will be taken if the price is below the center line even if set to "0", the middle line is the absolute cut off point.



TdiCloseONcross:

Set this to true if you want the EA to close your open trade on a reverse cross of the H4 TDI.

TdiCloseONflat:

Set this to true if you want the EA to close your open trade on the H4 TDI going flat.

TdiCloseONneg:

Set this to true if you want the EA to close your open trade on the H4 TDI going in the opposite direction.

You can have none or 1 – 3 of these set to true, they are a logical “OR”.

MinTdiSlope:

This is the minimum slope of the TDI Green Line that will trigger a slope alert.

UseStochSlope:

Set to true if you want the slope of the Stochastics to be part of the Stochastics Signal.

MinStochSlope:

This is the minimum slope of the Stochastics that will trigger a Stochastics Slope Alarm. Use only positive numbers for this value.

UseCounterTrend:

Set this to true if you want to take trades against the Daily Trend.

CounterTrendTPpips:

Enter the number of pips for your TP when using Counter Trend. This will override the Take Profit pip setting when a counter trend trade is taken.

UseTMAdailyTrend:

Set this to true if you want to use the Daily TMA as your trend indicator, if left at false it will use the 2/8 moving average daily trend.

TradeLong:

Set to false if you don't want to take any Long Trades.

TradeShort:

Set to false if you don't want to take any Short Trades.

UseTDIC1:

Set to true to use the first of three TDI time frames for trade confirmation.

TdiConfirmationTimeFrameC1:

The time period to use, such as 5.

UseConfirmCrossC1:

If left at false it will confirm if Green TDI line is above or below Red TDI line. If set to true the TDI must cross on the present candle.

UseTDIC2:

Set to true to use the second of three TDI time frames for trade confirmation.

TdiConfirmationTimeFrameC2:

The time period to use, such as 60.

UseConfirmCrossC2:

If left at false it will confirm if Green TDI line is above or below Red TDI line. If set to true the TDI must cross on the present candle.

UseTDIC3:

Set to true to use the third of three TDI time frames for trade confirmation.

TdiConfirmationTimeFrameC3:

The time period to use, such as 10080.

UseConfirmCrossC3:

If left at false it will confirm if Green TDI line is above or below Red TDI line. If set to true the TDI must cross on the present candle.

If you don't want to use any of these just leave them all at false, or you can use any number of them in combination. They will be grayed out on the chart but will still give you an indication of what is happening.

Remember: The H4 TDI Cross Signal is always active and cannot be turned off.

TradeOnce:

Set this to true if you want the Robot to make only one trade and then suspend itself. **This must be set to "True" for the "AutoRestartRobot" to function.**

DataDisplay:

Set to false if you want to hide part of the display on the right side of the screen.

DashBoard:

Set this to true if you are going to use the Dash Board as this tells the EA to save the data files needed by the Dash Board.

SendEmail:

Set this to true if you want to send yourself an email when a Trade or Alert takes place. Email must be set up in MT4 under 'Options' for this to work. This only tells you that there is an alert and does not confirm that a trade has been placed with your Broker.

AlertModeOnly:

Set to true if you only want to be alerted of a possible trade without a trade being sent to the Broker. Everything else works the same. The PAIR name on the Dash Board will be White instead of Yellow when in the Alert Mode.

AlarmScrnCapON:

If set to true will take a screen shot of the chart at the moment of the Trade or Alert. This .gif file will be saved in the files folder under the experts folder.experts\files\. There may be 2 files created, one for the alert and another when the trade is placed with your Broker.

ScreenH:

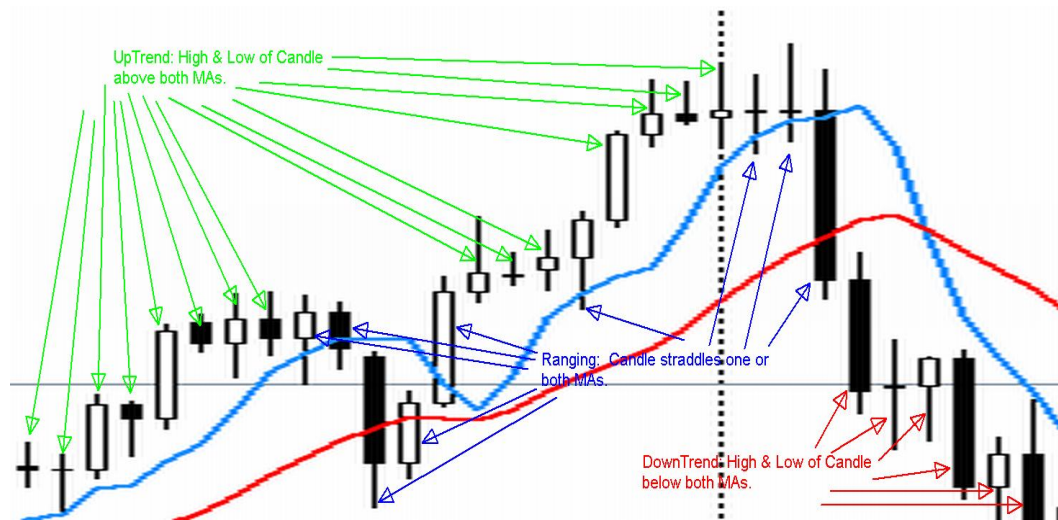
The screen capture Horizontal resolution.

ScreenV:

The screen capture Vertical resolution.

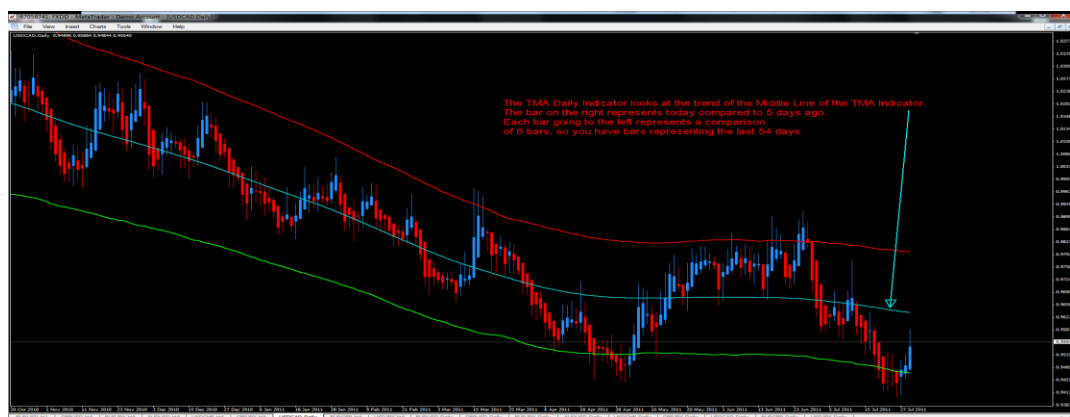
## Trend 2/8 Daily

This Trend Alarm look at the present day and the previous 9 days. Each bar of the Trend Indicator represents one of these days starting from the right and moving to the left.



## TMA Trend Daily

This Trend Alarm look at the present day and the previous 54 days. Each bar of the Trend Indicator represents one of these 6 day increments starting from the right and moving to the left.



## Dash Board Indicators

