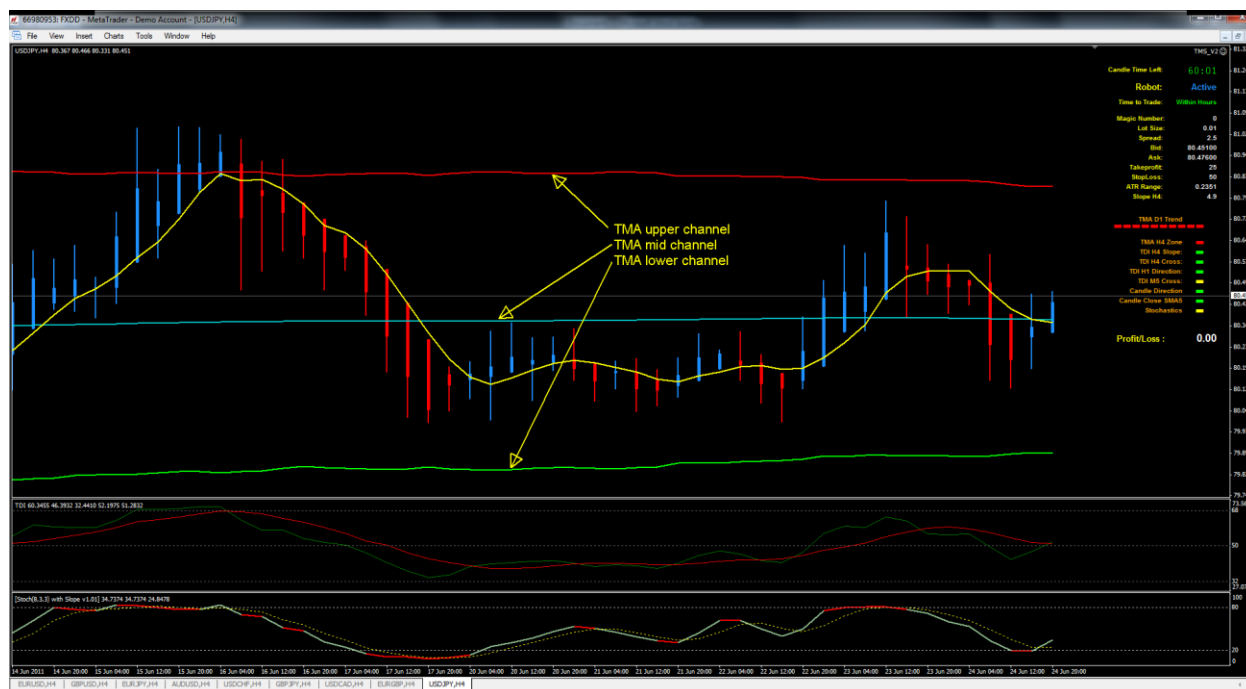


## TMS\_V2



This EA is hard coded to work only on the H4 time frame. No use in jumping from one time frame to another until we get it tweaked for the H4. You can put it on any time frame chart you like but it still is going to do its calculations for the H4. It is similar to the original EA with some changes to what alerts it uses to enter a trade. If you have it set to take only one trade and you change time frames it will ask you if you want to start the Robot. If the Robot has already opened a trade for that pair select "NO", if not then select "YES" to activate the Robot. Even if you select "NO" and are in a trade the Robot will still watch for exits if you have any selected. So if you have "TdiCloseONcross" set to true and the Robot is suspended it will still close the trade if you get a cross in the opposite direction. You may want to try the Robot with the defaults just to get the hang of it.

This EA is just for testing purposes at this time to see what would make the best combination of alerts for this "TMS" system. The idea is to get it as close to hands off as we can, of course once the Robot gets you into a trade you can always change your Broker TP or SL.

**Please pass along any settings that work for you so we all can learn what works best.**

I have not included the Dash Board in this zip file at this time, will do that at a later time when we get the EA tweaked as far as we can, the same alerts are on the right hand side of the chart as would be on the Dash Board. Put the TMS\_V4.ex4 expert in the experts folder and the other files in the indicator folder.

You don't have to have any indicators on the screen for the EA to work, but they must be in the indicators folder. Check your Experts and Journal tabs on your MT4 platform for any errors after loading the EA.

The following lists explain what I have added, other items are as they were, although I have not tested any of them.

## Screen Alert Bars

All must be same color for trade

TMA D1 Trend:	This is the trend shown by the Mid Channel Line of the TMA Daily.
TMA H4 Zone:	Long trades only if price is below Mid Line of H4 TMA Channel. Short trades only if price is above Mid Line of H4 TMA Channel.
TDI H4 Slope:	Only trades if slope is equal to or greater than value set in "UseSlope".
TDI H4 Cross:	Only trades if Green TDI has just Crossed Red TDI.
TDI H1 Direction:	Green H1 TDI must be above or below Red H1 TDI to trade.
TDI M5 Cross:	Trades only when M5 TDI has just crossed.
Candle Direction:	Proper 2 or 3 candle sequence to trade. Only trades on 1 <sup>st</sup> or 2 <sup>nd</sup> candle.
Candle Close SMA5:	Price must be above or below sma5 on the H4 to trade.
Stochastics:	Must be between 20 and 80 and moving in proper direction to trade.
Profit/Loss:	Shows present profit or Loss of trade.

## Settings

UseTakeProfit:	If set to 'true' will use the "TakeProfit" setting, if set to false will use the "TPmultiplier" times the "ATR Range" value. The "TPmultiplier" is a percentage as a whole number.
TPmultiplier:	Can be greater than 100.
UseStopLoss:	Same idea as "UseTakeProfit"
TdiCloseONcross:	Trade will close on a reverse cross of the tdi.
TdiCloseONflat:	Trade will close on tdi going flat.
UseSlope:	If set to 0.0, slope will not be used. If set greater than 0.0 trade will not trigger until slope is equal to or greater than setting.
TradeOnce:	Set to true if you only want the Robot to make just one trade. Even when Robot is suspended it will still look for an exit if you have it set to do so. Setting this to true will stop the Robot from opening another trade on the same pair after it closes the first one. To reset Robot, open EA properties and close, this will give you the pop up box asking you if you want to run the Robot.
DataDisplay:	Turns off lower half of Data Display on screen. Be sure to have the "Chart Shift" box selected in the charts properties to keep this display out of the chart active area.

**DashBoard:**

Set to true if you are using the Dash Board. This will write files to the Files Folder, you need Admin rights to do this. If you don't see these files being written with this turned on the Dash Board will not work, these files are updated once a minute. Windows 7 is very fussy about this if you have your MT4 installed under the Program Folder. You may want to try installing MT4 into a different folder that is not under the Program Files Folder.