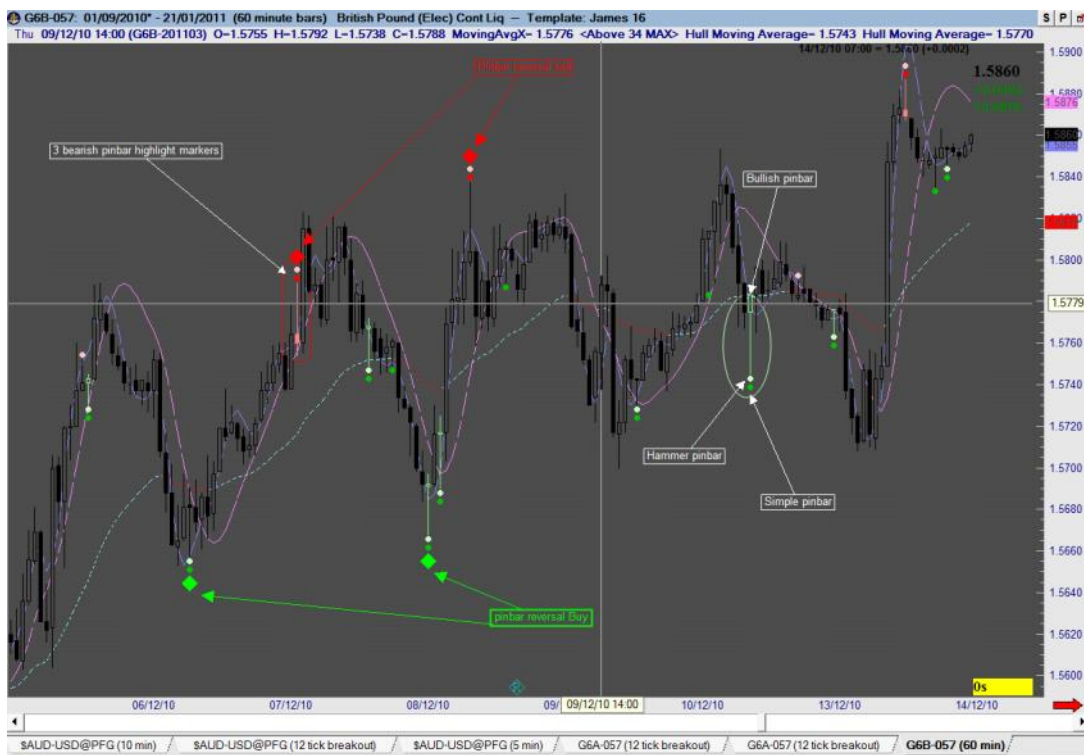


Pinbars

22 January 2011

01:50



Below is the backtest of the pinbar reversal trades with a stop at the opposite end of the pin and a target of 140 pips



From date 08/10/2010, To date 07/01/2011,

Overall

Total Net Profit:	\$4,144	Profit Factor (\$Wins/\$Losses):	4.75
Total Trades:	12	Winning Percentage:	50.0%
Average Trade:	\$345	Payout Ratio (Avg Win/Loss):	4.75
Avg # of Bars in Trade:	15.83	Z-Score (W/L Predictability):	-0.9
Avg # of Trades per Year:	47.6	Percent in the Market:	2.4%
Max Closed-out Drawdown:	-\$700	Max Intraday Drawdown:	-\$913
Account Size Required:	\$3,006	Return Pct:	137.9%
Open Equity:	\$0	Kelly Ratio:	0.3946
Current Streak:	3 Wins	Optimal f:	0.45

Winning Trades

Total Winners:	6
Gross Profit:	\$5,250
Average Win:	\$875
Largest Win:	\$875
Largest Drawdown in Win:	-\$125
Avg Drawdown in Win:	-\$74
Avg Run Up in Win:	\$875
Avg Run Down in Win:	-\$74
Most Consec Wins:	3
Avg # of Consec Wins:	2.00
Avg # of Bars in Wins:	16.83

Losing Trades

Total Losers:	6
Gross Loss:	-\$1,106
Average Loss:	-\$184
Largest Loss:	-\$213
Largest Peak in Loss:	\$756
Avg Peak in Loss:	\$370
Avg Run Up in Loss:	\$370
Avg Run Down in Loss:	-\$184
Most Consec Losses:	4
Avg # of Consec Losses:	3.00
Avg # of Bars in Losses:	14.83

Below is the backtest of the pinbar reversal trades with a stop at the opposite end of the pin and a target of 140 pips and target beyond which there is a trailing stop of the low of three previous bars





Position selection All trades, From date 08/10/2010, To date 07/01/2011,

Overall

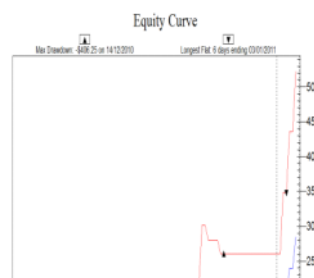
Total NetProfit:	\$5,231	Profit Factor (\$Wins/\$Losses):	7.70
Total Trades:	12	Winning Percentage:	66.7%
Average Trade:	\$436	Payout Ratio (Avg Win/Loss):	3.85
Avg # of Bars in Trade:	14.67	Z-Score (W/L Predictability):	-0.6
Avg # of Trades per Year:	47.6	Percent in the Market:	2.2%
Max Closed-out Drawdown:	-\$406	Max Intraday Drawdown:	-\$588
Account Size Required:	\$2,681	Return Pct:	195.2%
Open Equity:	\$0	Kelly Ratio:	0.5800
Current Streak:	3 Wins	Optimal f:	0.62

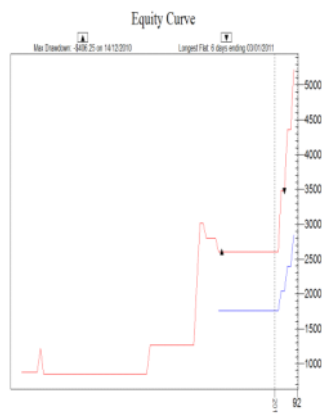
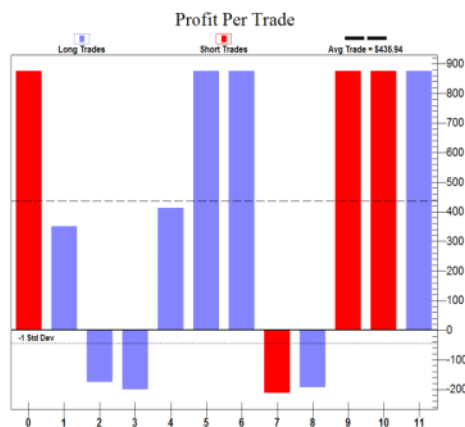
Winning Trades

Total Winners:	8
Gross Profit:	\$6,013
Average Win:	\$752
Largest Win:	\$875
Largest Drawdown in Win:	-\$125
Avg Drawdown in Win:	-\$69
Avg Run Up in Win:	\$812
Avg Run Down in Win:	-\$69
Most Consec Wins:	3
Avg # of Consec Wins:	2.67
Avg # of Bars in Wins:	16.00

Losing Trades

Total Losers:	4
Gross Loss:	-\$781
Average Loss:	-\$195
Largest Loss:	-\$213
Largest Peak in Loss:	\$650
Avg Peak in Loss:	\$241
Avg Run Up in Loss:	\$241
Avg Run Down in Loss:	-\$195
Most Consec Losses:	2
Avg # of Consec Losses:	2.00
Avg # of Bars in Losses:	12.00





Below is the test with identical parameters back tested over 16 months

From date 13/08/2009, To date 07/01/2011, Chart By Date, Ignore trades <= -999,999,999, Ignore trades >= 999,999,999, Ignore big wins 0, Ignore big losses 0, Profit is >= 0.00, Show cents No, Show Max Intra No

Overall

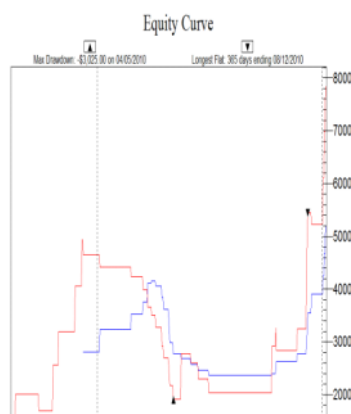
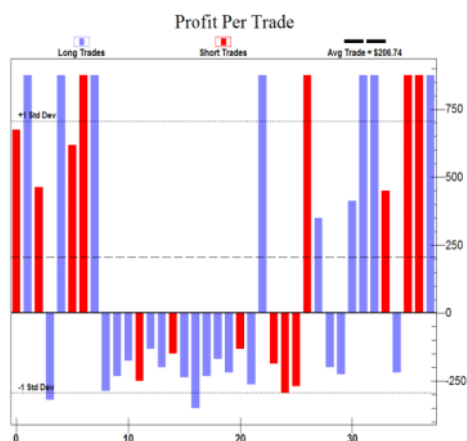
Total Net Profit:	\$7,856	Profit Factor (\$Wins/\$Losses):	2.66
Total Trades:	38	Winning Percentage:	44.7%
Average Trade:	\$207	Payout Ratio (Avg Win/Loss):	3.28
Avg # of Bars in Trade:	8.82	Z-Score (W/L Predictability):	-2.8
Avg # of Trades per Year:	27.1	Percent in the Market:	3.9%
Max Closed-out Drawdown:	-\$3,025	Max Intraday Drawdown:	-\$3,025
Account Size Required:	\$5,118	Return Pct:	153.5%
Open Equity:	\$0	Kelly Ratio:	0.2791
Current Streak:	3 Wins	Optimal f:	0.41

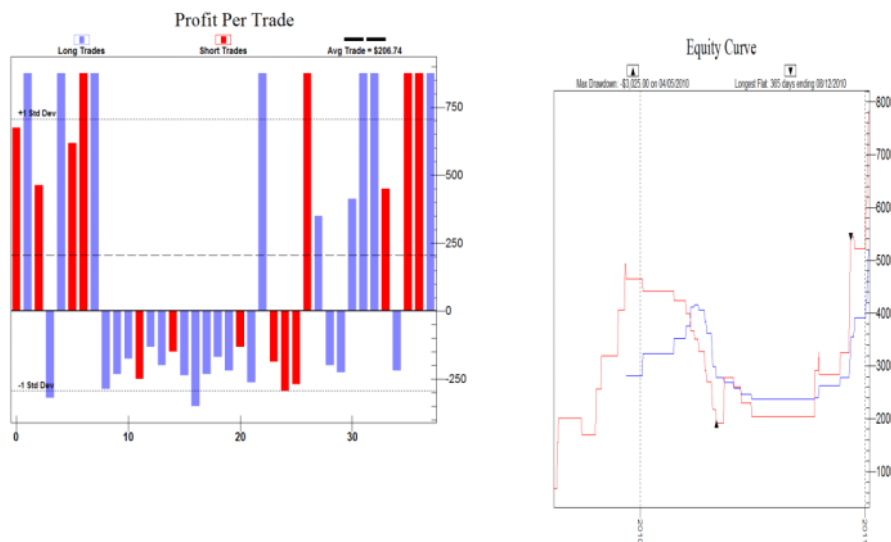
Winning Trades

Total Winners:	17
Gross Profit:	\$12,594
Average Win:	\$741
Largest Win:	\$875
Largest Drawdown in Win:	-\$406
Avg Drawdown in Win:	-\$111
Avg Run Up in Win:	\$811
Avg Run Down in Win:	-\$111
Most Consec Wins:	4
Avg # of Consec Wins:	2.83
Avg # of Bars in Wins:	15.06

Losing Trades

Total Losers:	21
Gross Loss:	-\$4,738
Average Loss:	-\$226
Largest Loss:	-\$350
Largest Peak in Loss:	\$425
Avg Peak in Loss:	\$126
Avg Run Up in Loss:	\$126
Avg Run Down in Loss:	-\$234
Most Consec Losses:	14
Avg # of Consec Losses:	4.20
Avg # of Bars in Losses:	3.76





As a benchmark comparison below is chart and table showing all pinbar trades are taken with no filters



From date 01/10/2010, To date 21/01/2011,

Overall

Total Net Profit:	-\$125	Profit Factor (\$Wins/\$Losses):	0.99
Total Trades:	113	Winning Percentage:	18.6%
Average Trade:	-\$1	Payout Ratio (Avg Win/Loss):	4.34
Avg # of Bars in Trade:	5.46	Z-Score (W/L Predictability):	-0.5
Avg # of Trades per Year:	365.3	Percent in the Market:	7.7%
Max Closed-out Drawdown:	-\$4,131	Max Intraday Drawdown:	-\$4,200
Account Size Required:	\$6,293	Return Pct:	-2.0%
Open Equity:	\$38	Kelly Ratio:	-0.0019
Current Streak:	9 Losses	Optimal f:	0.00

Winning Trades

Total Winners:	21
Gross Profit:	\$12,525
Average Win:	\$596
Largest Win:	\$875

Losing Trades

Total Losers:	92
Gross Loss:	-\$12,650
Average Loss:	-\$138
Largest Loss:	-\$469

Largest Drawdown in Win: -\$256
 Avg Drawdown in Win: -\$86
 Avg Run Up in Win: \$720
 Avg Run Down in Win: -\$86
 Most Consec Wins: 2
 Avg # of Consec Wins: 1.31
 Avg # of Bars in Wins: 11.43

Largest Peak in Loss: \$650
 Avg Peak in Loss: \$107
 Avg Run Up in Loss: \$107
 Avg Run Down in Loss: -\$144
 Most Consec Losses: 13
 Avg # of Consec Losses: 5.41
 Avg # of Bars in Losses: 4.10

