

Nanningbob 4h Trading System ver. 5.0

<http://www.forexfactory.com/showthread.php?t=246113>

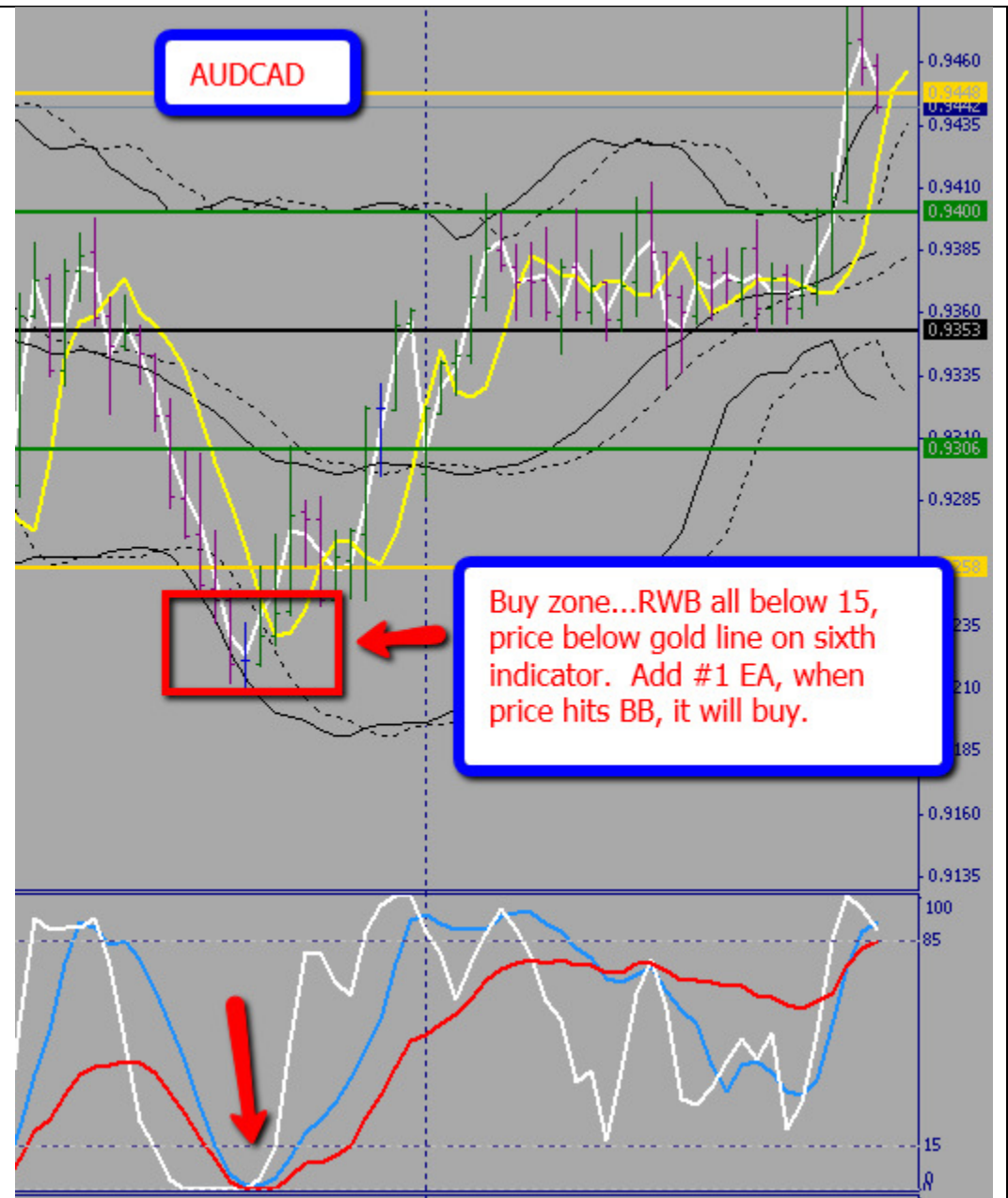
Summary notes



This is the template I use. I suggest you build your own as it forces you to attempt to understand what the heck this trading approach is all about.

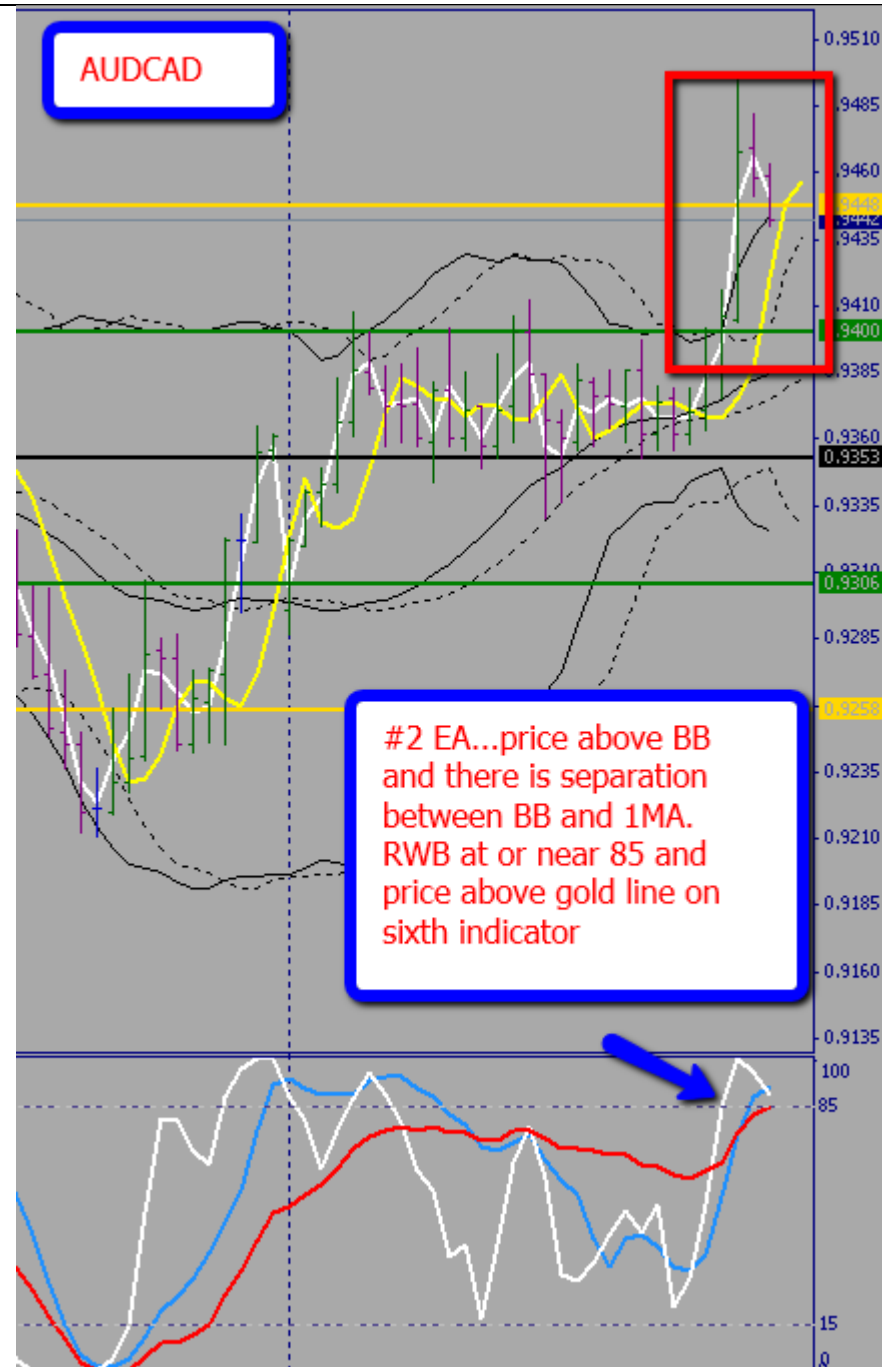
#1 EA PRIMARY TRADE

- Price inside BB (the solid black BB)
- RWB at or near 15/85
- Must be above/below green line on Sixth indicator
- Turn on EA and trade triggers when BB hit
- Magic # is 1



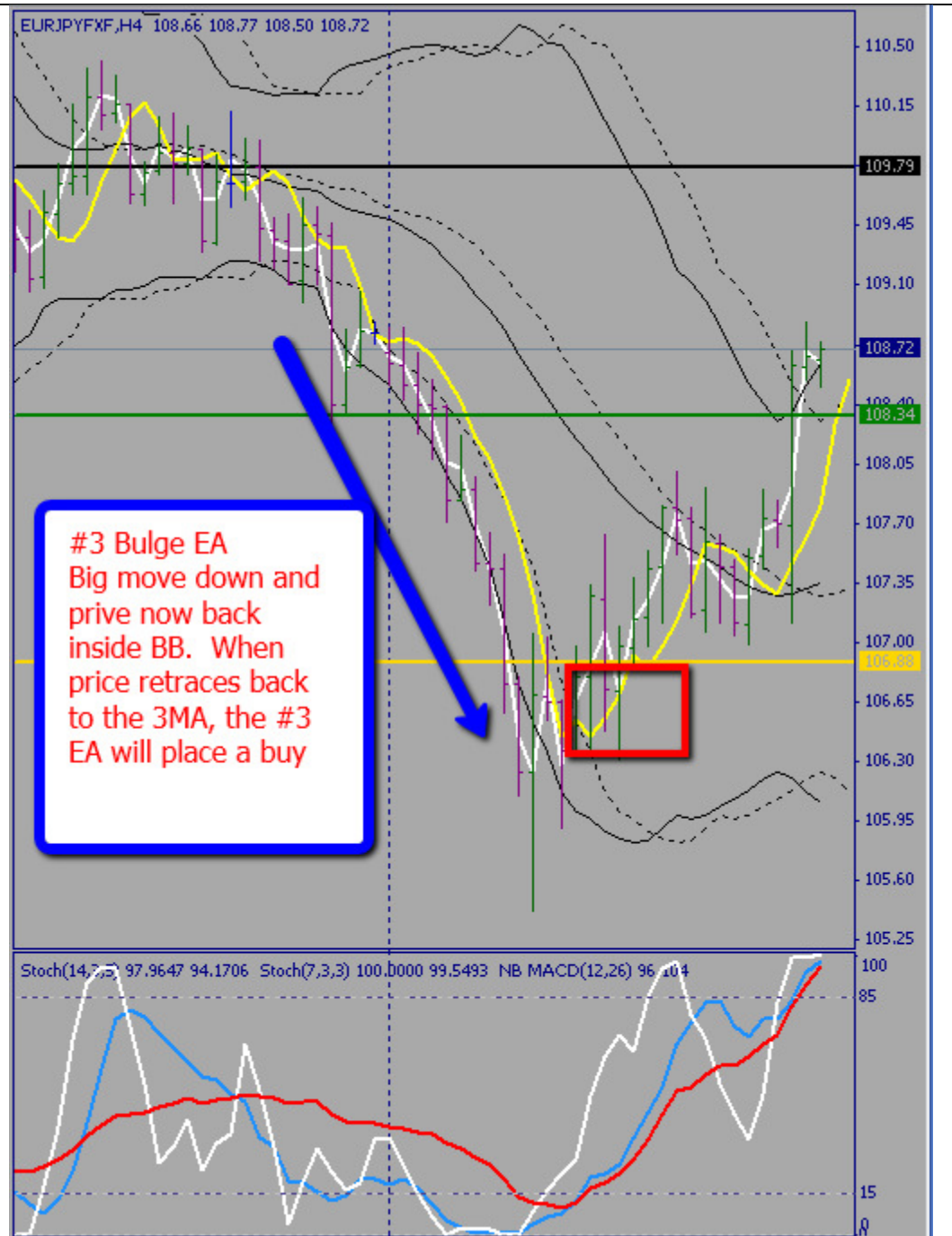
#2 EA SECONDARY TRADE

- Based on 1MA being outside BB(the solid black BB)
- Need some separation of 1MA and BB
- RWB at or near 15/85
- Must be above/below green line on Sixth indicator
- Trade triggers when 1MA comes back inside BB
- If 1MA is inside BB, will enter immediately
- Magic # is 2



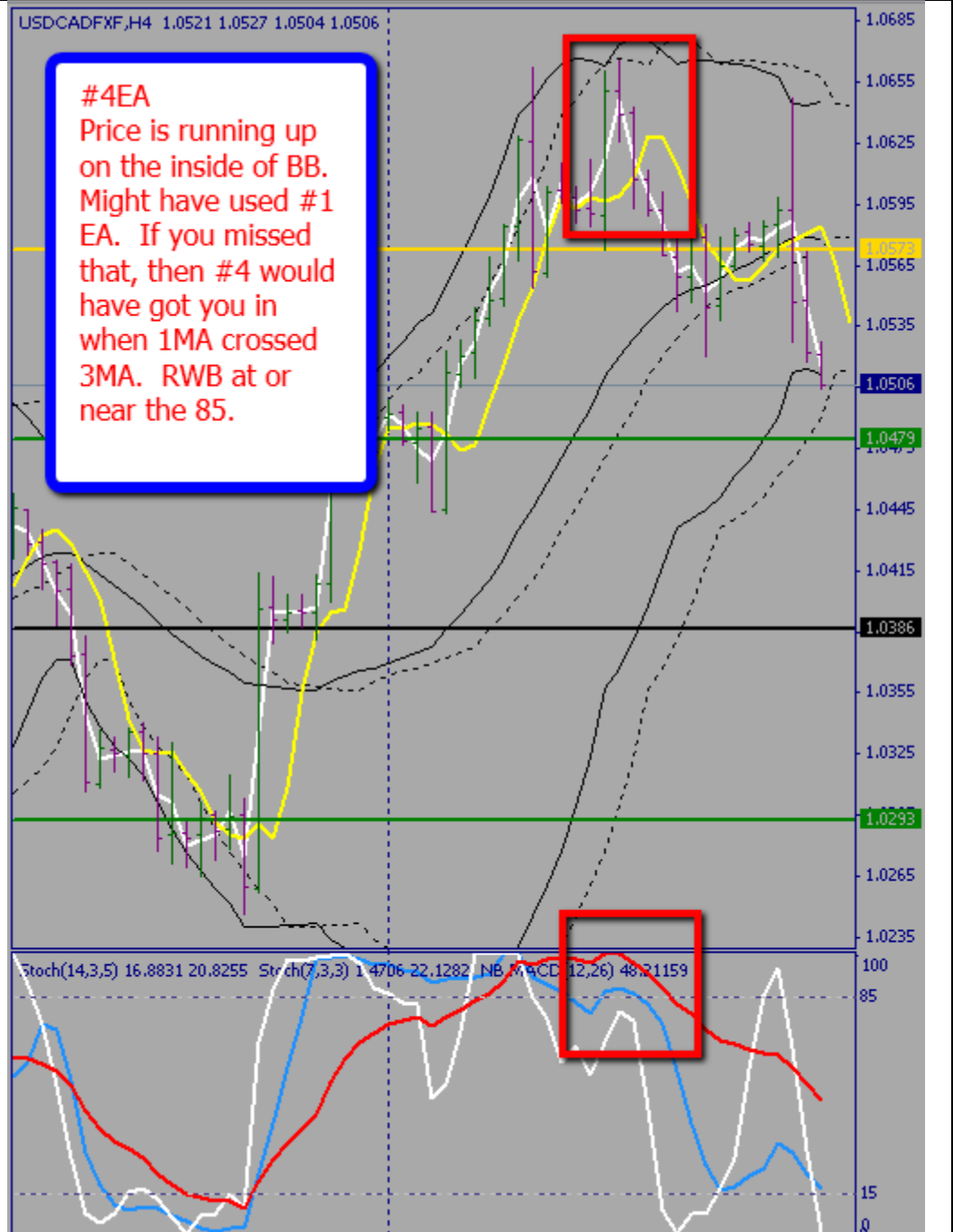
#3 EA BULGE TRADE

- Only use beyond gold lines and after big move
- 25BB should still be running away from price
- Yellow moving average (3MA) goes back inside BB, turn EA on and it will trigger when price hits the 3MA – the yellow line
- Magic # is 3



#4 EA SIMILAR TO PRIMARY TRADE

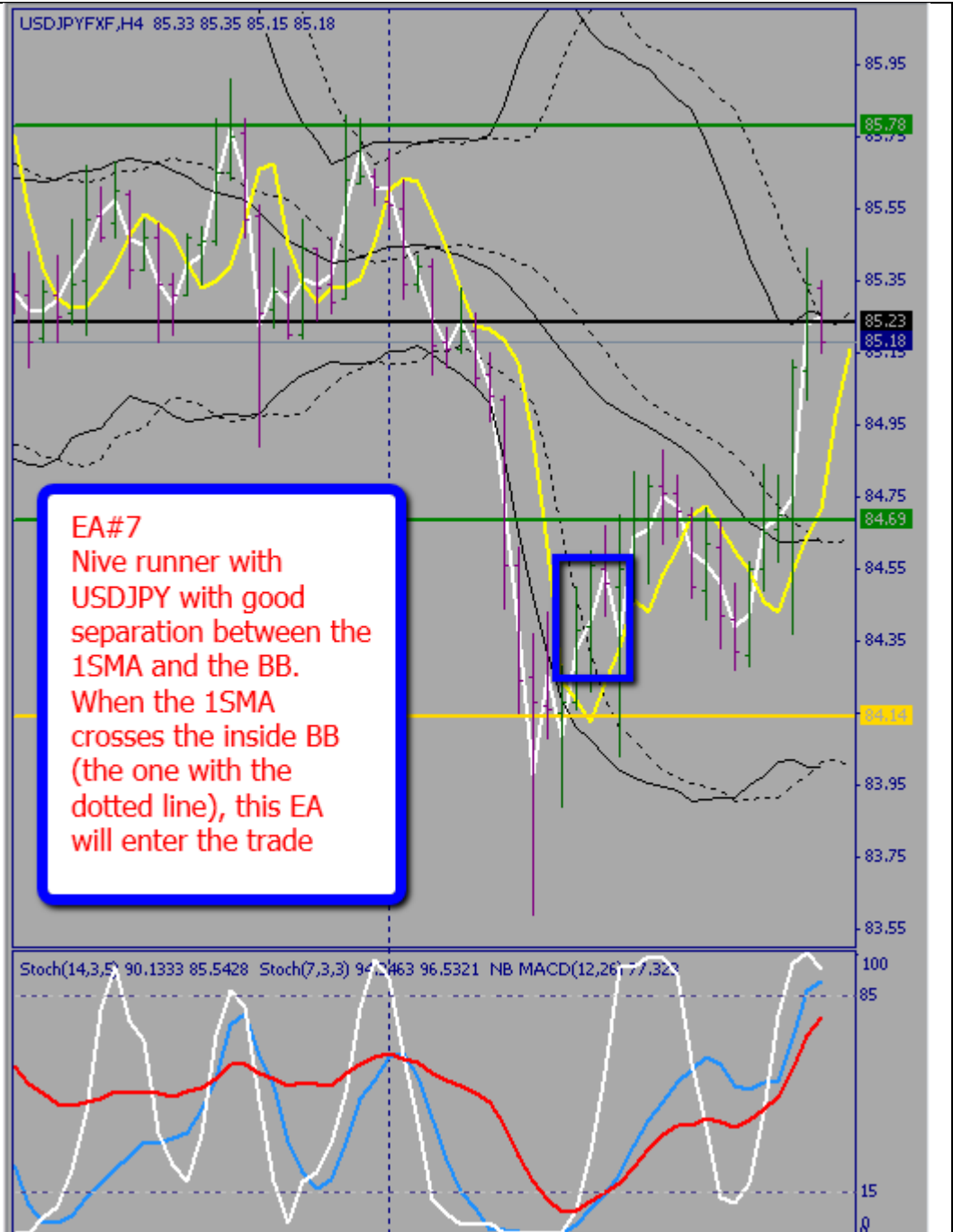
- Price is running inside BB
- RWB at or near 15/18
- Price is above/below green line on Sixth indicator
- If you think price will not hit BB, and want to be in on the trade, use this....it triggers when 1MA crosses 3MA **OR** if BB hit
- Magic # is 4
- Has a re-entry built in for 200 pips (or whatever you specify)



<p>#5 EA</p> <p>This is the recovery EA when a trade goes bad. It enters based on a 2-4-2 recovery method every 200 pips, or whatever range you specify. There is also a 1-1-3-3-recovery system under development.</p> <p>You may set it to BE or BE + X pips.</p>	
<p>#6 EA</p> <p>Under development</p>	

#7 EA

- This is intended to handle a runner or huggie trade
- There is an extra BB with a shift of 3 that is used
- Must be separation of the 1MA and standard BB
- Then apply #7 EA and trigger is 1MA crossing over the BB with the shift of 3 (that's the BB with the dotted line)



<p>Other EAs</p> <p>This robot by Steve Hopwood auto-trades #1, #2, #3, #4 and #7 trade setups from above and is currently under development.</p> <p>A 2-4-2 or 1-1-3-3 recovery system under development.</p> <p>CLICK HERE</p> <p>NOTE: This robot does not use a magic number as it considers all trades to belong to it. Therefore, it cannot be used with another robot at the same time. You have been warned.</p>	<p>NH4 Dashboard v2</p> <p>A most clever bit of programming that provides you with a panel to quickly understand what is happening with a number of pairs. The panel has it's own built-in EA that trade #1 to #7 trade setups. It requires some study. CLICK HERE.</p> <p>http://www.forexfactory.com/showthread.php?t=252692</p>
<p>Other useful indicators</p> <p>Signals indicator</p> <p>This in provides vertical lines on your chart to indicate the basic signals. CLICK HERE. http://www.forexfactory.com/showpost.php?p=3907690&postcount=227</p> <p>Breakeven Indicator</p> <p>Gives you the breakeven price for open trades on your chart. CLICK HERE. http://www.forexfactory.com/showpost.php?p=3904968</p> <p>History indicator</p> <p>Gives you the pips based on what is in your trade history date range. CLICK HERE. http://www.forexfactory.com/showpost.php?p=3982777</p>	