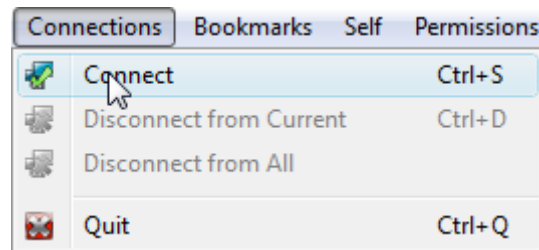
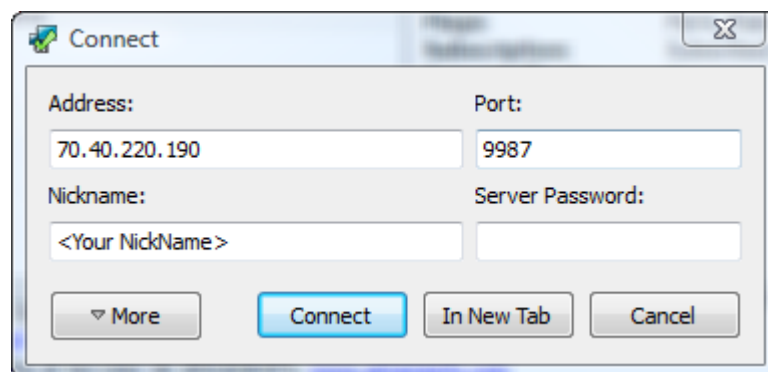
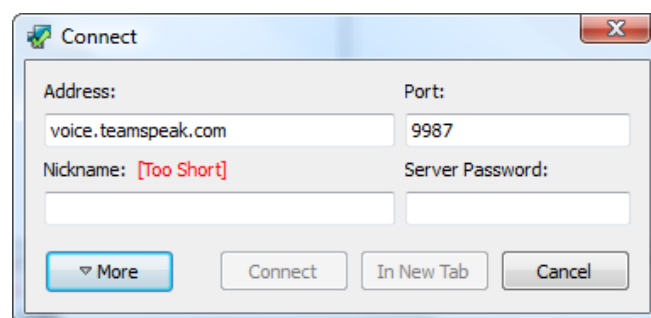


## How to Connect to the TeamSpeak 3 Server.

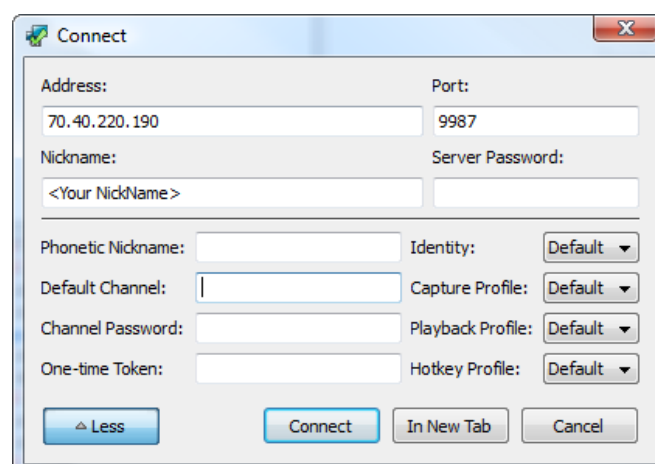
1. On the Menu go to **Connection -> Connect**

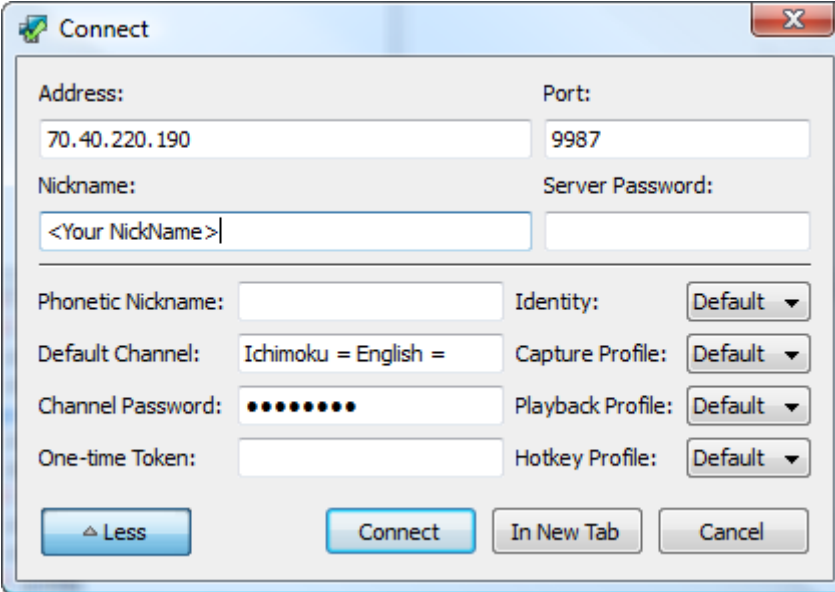


2. Change the information in the address from voice.teamspeak.com to the IP address **70.40.220.190** the port has to be **9987**, then set your **NickName** then click on **More**.



3. On the option that said, **Default Channel**, you have to set it as **Ichimoku = English =** and in the Channel Password use the password that is **ffactory**



A screenshot of a 'Connect' dialog box. The dialog has a title bar with a green icon and a close button. It contains several input fields and dropdown menus. The 'Address' field is filled with '70.40.220.190' and the 'Port' field with '9987'. The 'Nickname' field contains '<Your NickName>'. The 'Server Password' field is empty. Below these, there are four rows of settings: 'Phonetic Nickname' (empty), 'Identity' (Default), 'Default Channel' (Ichimoku = English =), 'Capture Profile' (Default), 'Channel Password' (masked with dots), 'Playback Profile' (Default), 'One-time Token' (empty), and 'Hotkey Profile' (Default). At the bottom, there are four buttons: 'Less', 'Connect', 'In New Tab', and 'Cancel'.

**Connect**

Address: 70.40.220.190 Port: 9987

Nickname: <Your NickName> Server Password:

Phonetic Nickname: Identity: Default

Default Channel: Ichimoku = English = Capture Profile: Default

Channel Password: Playback Profile: Default

One-time Token: Hotkey Profile: Default

Less Connect In New Tab Cancel

4. Then just click on **Connect**.

Any questions please send an email to [info@arkanesfx.com](mailto:info@arkanesfx.com)